

STATE OF ILLINOIS  
DEPARTMENT OF TRANSPORTATION

F.A.P. RTE.	SECTION	COUNTY	TOTAL SHEETS	SHEET NO.
832	D7 AGG SHLD 2018-2	CLARK	3	1
		ILLINOIS	CONTRACT NO. 74809	

FOR INDEX OF SHEETS, SEE SHEET NO. 2

ADT = 2200 (2015)

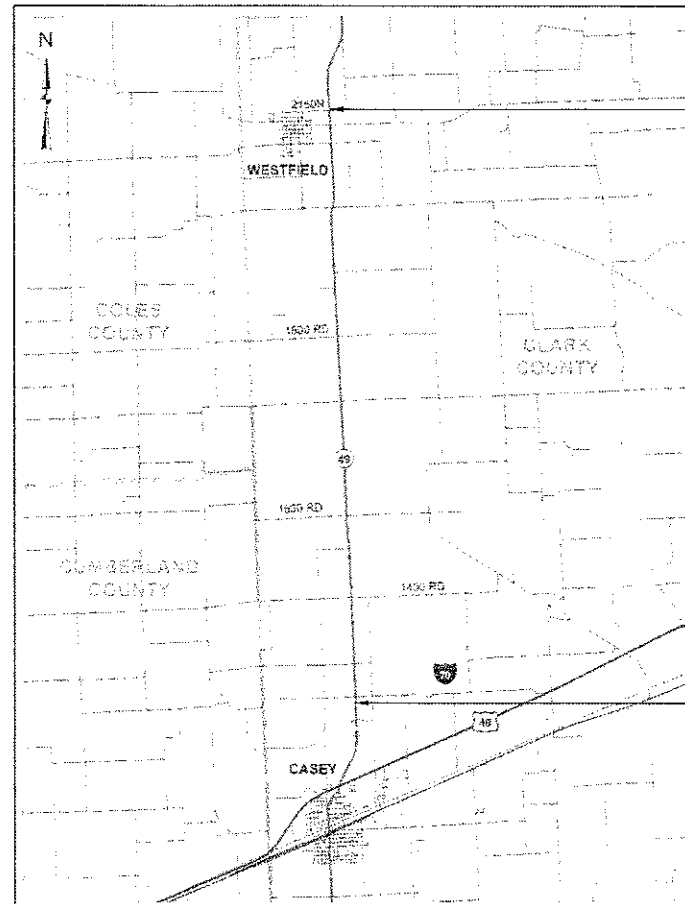
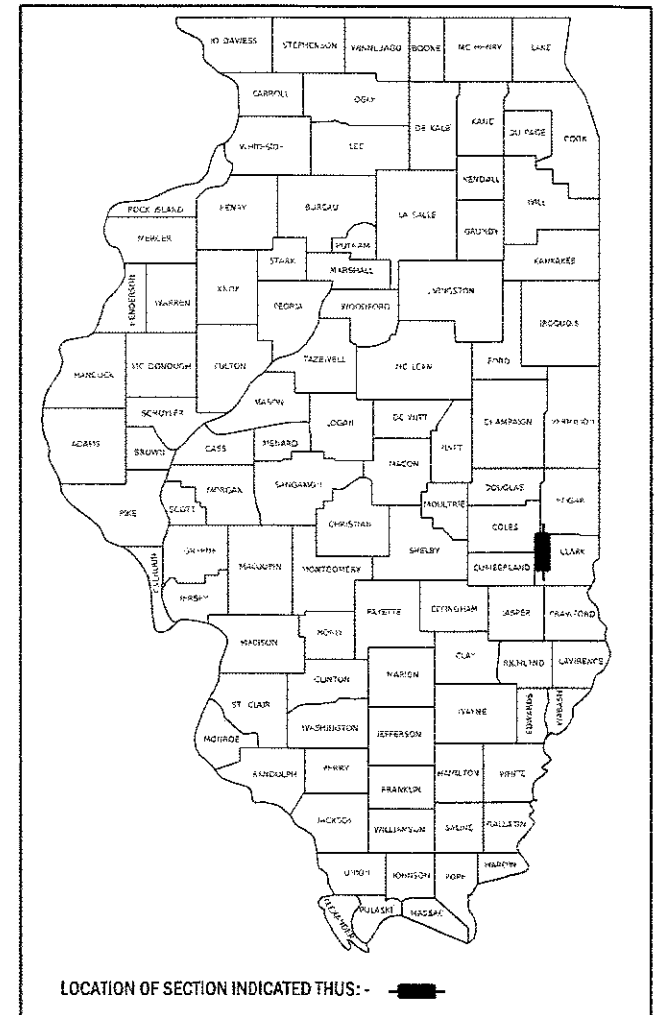
# PROPOSED HIGHWAY PLANS

F.A.P. ROUTE 832 (ILL 49)  
SECTION D7 AGG SHLD 2018-2

AGGREGATE SHOULDERS  
CLARK COUNTY

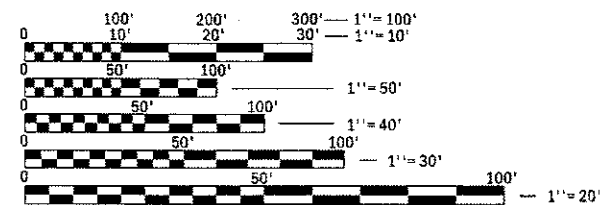
C-97-063-17

D-97-030-17



END PROJECT AT  
2150 N. AT WESTFIELD

BEGIN PROJECT 0.3  
MILES NORTH OF I-70



FULL SIZE PLANS HAVE BEEN PREPARED USING STANDARD ENGINEERING SCALES. REDUCED SIZED PLANS WILL NOT CONFORM TO STANDARD SCALES. IN MAKING MEASUREMENTS ON REDUCED PLANS, THE ABOVE SCALES MAY BE USED.

J.U.L.I.E.  
JOINT UTILITY LOCATION INFORMATION FOR EXCAVATION  
1-800-892-0123  
OR 811

PROJECT ENGINEER: TOM RONAN  
PROJECT MANAGER: RUSS WALKER  
PHONE: (217) 342-8361  
CONTRACT NO. 74809

GROSS LENGTH = 48312.00 FT. = 9.150 MILE  
NET LENGTH = 48312.00 FT. = 9.150 MILE

STATE OF ILLINOIS  
DEPARTMENT OF TRANSPORTATION

SUBMITTED October 11 2017  
*Jeffrey M. South* REGIONAL ENGINEER

Nov 30 2017  
*Maureen M. Addis, P.E.* ENGINEER OF DESIGN AND ENVIRONMENT

Nov 30 2017  
*Michelle G. [Signature]* 2  
DIRECTOR OF PROGRAM DEVELOPMENT

PRINTED BY THE AUTHORITY  
OF THE STATE OF ILLINOIS

## INDEX OF SHEETS

SHEET NO.	ITEM
1	COVER SHEET
2	INDEX OF SHEETS, GENERAL NOTES AND SHOULDER DETAIL
3	SUMMARY OF QUANTITIES

THE FOLLOWING STANDARDS ARE A PART OF THESE PLANS AND ARE INCLUDED AFTER SHEET NO. 3:

STD. NO.	DESCRIPTION
000001-06	STANDARD SYMBOLS, ABBREVIATIONS AND PATTERNS
406201-01	MAILBOX TURNOUT
701001-02	OFF-ROAD OPERATIONS, 2L, 2W, MORE THAN 15' AWAY
701006-05	OFF-RD OPERATIONS, 2L, 2W, 15' TO 24" FROM PAVEMENT EDGE
701011-04	OFF-RD MOVING OPERATIONS, 2L, 2W, DAY ONLY
701301-04	LANE CLOSURE, 2L, 2W, SHORT TIME OPERATIONS
701306-04	LANE CLOSURE, 2L, 2W, SLOW MOVING OPERATIONS, DAY ONLY, FOR SPEEDS $\geq$ 45 MPH
701311-03	LANE CLOSURE, 2L, 2W, MOVING OPERATIONS - DAY ONLY
701901-07	TRAFFIC CONTROL DEVICES

## GENERAL NOTES

THIS SECTION SHALL BE CONSTRUCTED IN ACCORDANCE WITH THE PLANS; THE "STANDARD SPECIFICATIONS FOR ROAD AND BRIDGE CONSTRUCTION" ADOPTED APRIL 1, 2016; AND THE SPECIAL PROVISIONS INCLUDED IN THE PROPOSAL.

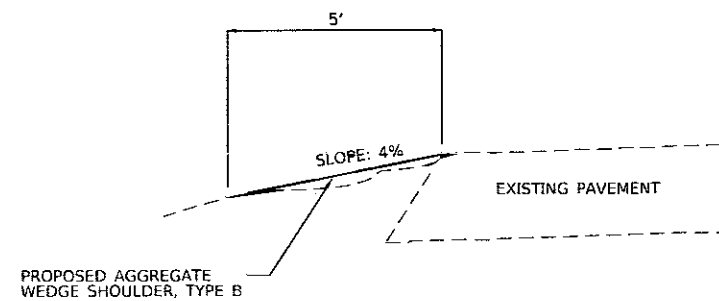
THIS PROJECT IS LOCATED ON ILL ROUTE 49 IN CLARK COUNTY. THE PROJECT STARTS 0.3 MILES NORTH OF I-70 AND EXTENDS NORTH FOR 9.15 MILES TO 2150 N. AT WESTFIELD. THE WORK INCLUDED IN SECTION D7 AGG SHLD 2018-2 CONSISTS OF PLACING AGGREGATE WEDGE SHOULDERS, TYPE B ON ILL ROUTE 49, TRAFFIC CONTROL, AND ANY OTHER WORK NECESSARY TO COMPLETE THE SECTION.

ALL MATERIAL USED FOR AGGREGATE WEDGE SHOULDER, TYPE B SHALL BE CRUSHED.

AGGREGATE FOR MAILBOX TURNOUTS AND PRIVATE ENTRANCES SHALL BE PLACED AS DIRECTED BY THE ENGINEER AND WILL BE PAID FOR AS AGGREGATE WEDGE SHOULDER, TYPE B.

A RATE OF APPLICATION OF 2.05 TONS/CU YD FOR GRANULAR MATERIAL HAS BEEN USED IN CALCULATING PLAN QUANTITY.

## SHOULDER DETAIL



MODEL: Default  
FILE NAME: p:\11084631\DIVTEG\_illinois.ppv\PMIDOT\Documents\DOT\_Offices\District\_7\Projects\74809\CA\Drawn\CA\Drawn\74809-jht-generate.dgn

USER NAME = steffenmk	DESIGNED -	REVISED - MJS 11-27-2017
	DRAWN -	REVISED -
PLOT SCALE = 100.0000' / in.	CHECKED -	REVISED -
PLOT DATE = 10/23/2017	DATE -	REVISED -

STATE OF ILLINOIS  
DEPARTMENT OF TRANSPORTATION

INDEX OF SHEETS, GENERAL NOTES AND SHOULDER DETAIL

SCALE: SHEET OF SHEETS STA. TO STA.

F.A.P. RTE	SECTION	COUNTY	TOTAL SHEETS	SHEET NO.
832	D7 AGG SHLD 2018-2	CLARK	3	2
CONTRACT NO. 74809			ILLINOIS FED. AID PROJECT	

