

STATE OF ILLINOIS  
DEPARTMENT OF TRANSPORTATION

| F.A. RTE. | SECTION | COUNTY   | TOTAL SHEETS       | SHEET NO. |
|-----------|---------|----------|--------------------|-----------|
| VAR.      | *       | VARIOUS  | 6                  | 1         |
|           |         | ILLINOIS | CONTRACT NO. 74820 |           |

\* D7 WEED CONTROL SPRAYING 2018

FOR INDEX OF SHEETS, SEE SHEET NO. 2

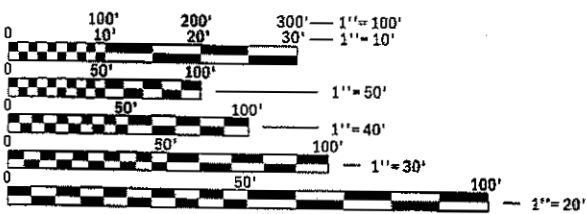
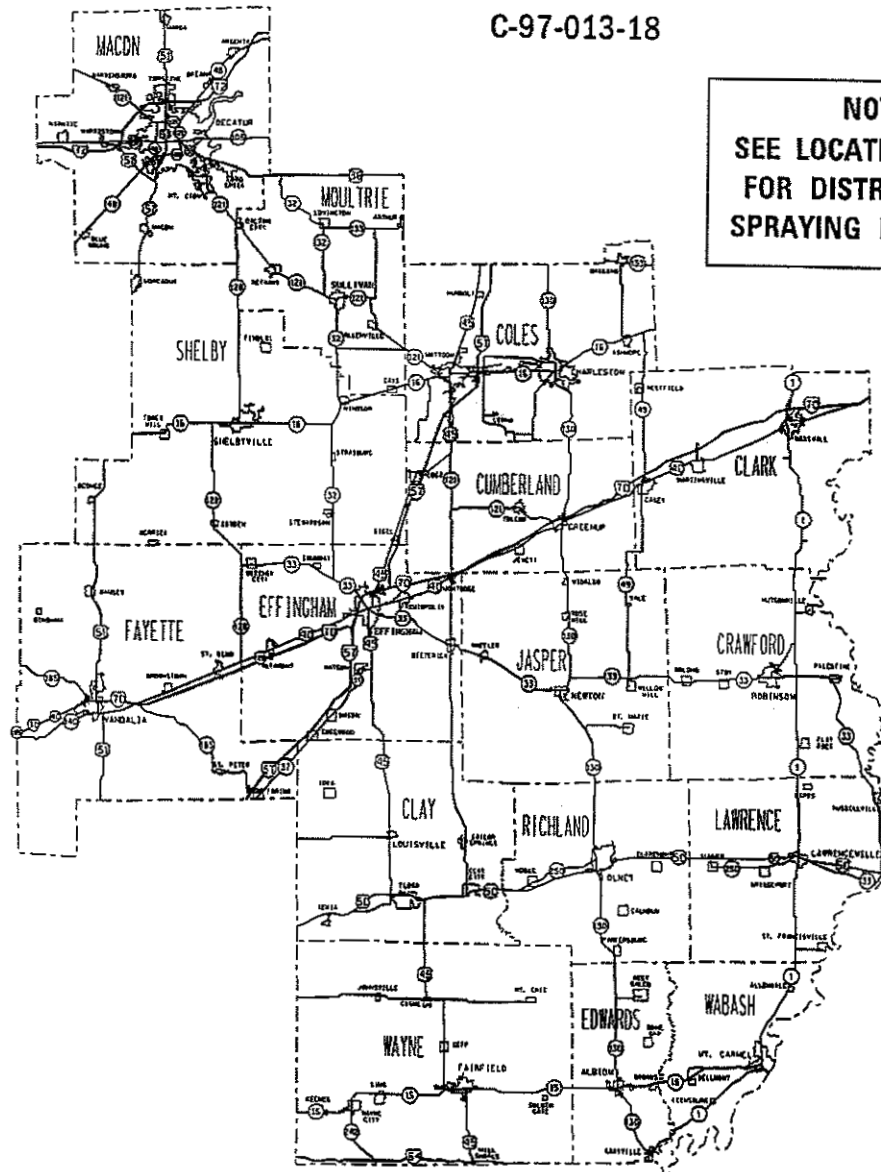
# PROPOSED HIGHWAY PLANS

VARIOUS ROUTES  
SECTION D7 WEED CONTROL SPRAYING 2018

WEED CONTROL SPRAYING  
VARIOUS COUNTIES

C-97-013-18

**NOTE:**  
SEE LOCATION MAPS  
FOR DISTRICT WIDE  
SPRAYING LOCATIONS



FULL SIZE PLANS HAVE BEEN PREPARED USING STANDARD ENGINEERING SCALES. REDUCED SIZED PLANS WILL NOT CONFORM TO STANDARD SCALES. IN MAKING MEASUREMENTS ON REDUCED PLANS, THE ABOVE SCALES MAY BE USED.

J.U.L.I.E.  
JOINT UTILITY LOCATION INFORMATION FOR EXCAVATION  
1-800-892-0123  
OR 811

PROJECT ENGINEER: TOM RONAN  
PROJECT MANAGER: TOM RONAN  
PHONE: (217)-342-8320  
CONTRACT NO. 74820



STATE OF ILLINOIS  
DEPARTMENT OF TRANSPORTATION

SUBMITTED OCTOBER 10 20 17  
Jeffrey M. Smith REGIONAL ENGINEER

Nov 30 20 17  
Lawrence M. Addis ENGINEER OF DESIGN AND ENVIRONMENT

Nov 30 20 17  
Amelia DIRECTOR OF PROGRAM DEVELOPMENT

PRINTED BY THE AUTHORITY  
OF THE STATE OF ILLINOIS

## INDEX OF SHEETS

| SHEET NO. | TITLE  |
|-----------|--|
| 1         | COVER SHEET                                      |
| 2         | INDEX OF SHEETS, HIGHWAY STANDARDS, SPRAY LIMITS |
| 3         | SUMMARY OF QUANTITIES                            |
| 4-6       | LOCATION MAPS                                    |

THE FOLLOWING STANDARDS ARE A PART OF THESE PLANS AND ARE INCLUDED AFTER SHEET NO. 6:

|           |   |
|-----------|---|
| 701101-05 | OFF-ROAD OPERATIONS, MULTILANE, 15' TO 24" FROM PAVEMENT EDGE |
| 701106-02 | OFF-ROAD OPERATIONS, MULTILANE, MORE THAN 15' AWAY            |
| 701426-09 | LANE CLOSURE, MULTILANE, INTERMITTENT OR MOVING OPERATION     |
| 701901-07 | TRAFFIC CONTROL DEVICES                                       |

## SPRAY LIMITS

| ROUTE   | COUNTIES                           | MILE POST  | DESCRIPTION                                       | MILES |
|---------|------------------------------------|------------|---|-------|
| I-57    | FAYETTE/CLAY/EFF/SHELBY/CUMB/COLES | 137 TO 201 | FAYETTE/MARION CO. LINE TO COLES/DOUGLAS CO. LINE | 64    |
| I-70    | FAYETTE/EFF/CUMB/CLARK             | 53 TO 155  | FAYETTE/BOND CO. LINE TO INDIANA STATE LINE       | 102   |
| TOTALS: |                                    |            |   | 166   |

**NOTES:**

WEED SPRAY SHALL BE APPLIED ON SELECTED AREAS ALONG I-57 & I-70 AS DIRECTED BY THE ROADSIDE MAINTENANCE TECHNICIAN. IT IS THE INTENT TO USE THE ENTIRE QUANTITY WITHIN THE MILEPOSTS SHOWN.

APPLICATION SHALL BE IN THE MEDIAN AND FROM EDGE OF SHOULDER TO THE RIGHT-OF-WAY LINE.

\* D7 WEED CONTROL SPRAYING 2018

MODEL: Default  
 FILE NAME: P:\1108\B&E\DOT\Illinois.gov\PIWDOT\Documents\DOT Offices\District 7\Projects\74820\CADD\data\CAD\sheet\ID74820-sht-genmate.dgn

|                              |            |                         |
|------------------------------|------------|-------------------------|
| USER NAME = steffemk         | DESIGNED - | REVISED - MJS 11-8-2017 |
|                              | DRAWN -    | REVISED -               |
| PLOT SCALE = 100.0000' / in. | CHECKED -  | REVISED -               |
| PLOT DATE = 10/13/2017       | DATE -     | REVISED -               |

**STATE OF ILLINOIS  
DEPARTMENT OF TRANSPORTATION**

**INDEX OF SHEETS & SPRAY LIMITS**

SCALE: SHEET OF SHEETS STA. TO STA.

| F.A. RTE.                 | SECTION | COUNTY  | TOTAL SHEETS | SHEET NO. |
|---------------------------|---------|---------|--------------|-----------|
| VAR.                      | *       | VARIOUS | 6            | 2         |
| CONTRACT NO. 74820        |         |         |              |           |
| ILLINOIS FED. AID PROJECT |         |         |              |           |

MODEL: D:\pilot - Draft\111084810\INTG\ILLINOIS.GOV\FW\DOT\Documents\DOT - Office\District 7\Projects\74820\CAD\Sheet\74820-sht-500.dgn  
FILE NAME: P:\111084810\INTG\ILLINOIS.GOV\FW\DOT\Documents\DOT - Office\District 7\Projects\74820\CAD\Sheet\74820-sht-500.dgn

100%  
STATE

| SUMMARY OF QUANTITIES |                     |        | TOTAL QUANTITIES | CONSTRUCTION TYPE CODE |  |  |
|-----------------------|---------------------|--------|------------------|------------------------|--|--|
| CODE NO               | ITEM                | UNIT   |                  | 0031                   |  |  |
| 67100100              | MOBILIZATION        | LSUM   | 1                | 1                      |  |  |
| K0029636              | ESCORT XP HERBICIDE | POUND  | 105              | 105                    |  |  |
| X0325947              | MILESTONE VM        | GALLON | 85               | 85                     |  |  |
|                       |                     |        |                  |                        |  |  |
|                       |                     |        |                  |                        |  |  |
|                       |                     |        |                  |                        |  |  |
|                       |                     |        |                  |                        |  |  |
|                       |                     |        |                  |                        |  |  |
|                       |                     |        |                  |                        |  |  |
|                       |                     |        |                  |                        |  |  |
|                       |                     |        |                  |                        |  |  |
|                       |                     |        |                  |                        |  |  |
|                       |                     |        |                  |                        |  |  |
|                       |                     |        |                  |                        |  |  |
|                       |                     |        |                  |                        |  |  |
|                       |                     |        |                  |                        |  |  |
|                       |                     |        |                  |                        |  |  |
|                       |                     |        |                  |                        |  |  |
|                       |                     |        |                  |                        |  |  |
|                       |                     |        |                  |                        |  |  |
|                       |                     |        |                  |                        |  |  |
|                       |                     |        |                  |                        |  |  |
|                       |                     |        |                  |                        |  |  |

|                                 |         |         |              |           |  |
|---------------------------------|---------|---------|--------------|-----------|--|
| * D7 WEED CONTROL SPRAYING 2018 |         |         |              |           |  |
| F.A.                            | SECTION | COUNTY  | TOTAL SHEETS | SHEET NO. |  |
| RTE.                            |         |         |              |           |  |
| VAR.                            | *       | VARIOUS | 6            | 3         |  |
| CONTRACT NO. 74820              |         |         |              |           |  |
| ILLINOIS FED. AID PROJECT       |         |         |              |           |  |

STATE OF ILLINOIS  
DEPARTMENT OF TRANSPORTATION

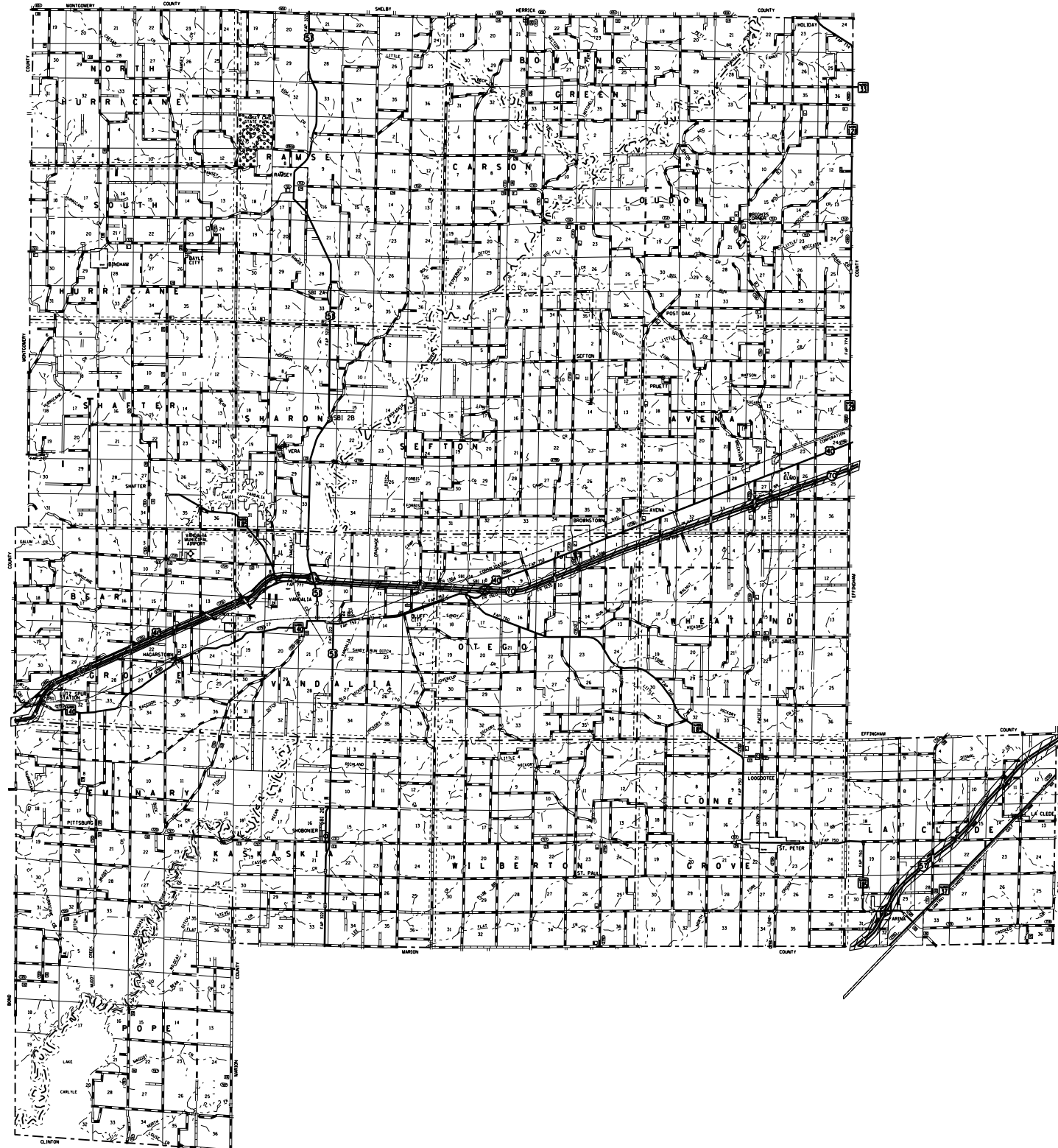
SUMMARY OF QUANTITIES

|        |       |    |        |      |    |      |
|--------|-------|----|--------|------|----|------|
| SCALE: | SHEET | OF | SHEETS | STA. | TO | STA. |
|--------|-------|----|--------|------|----|------|

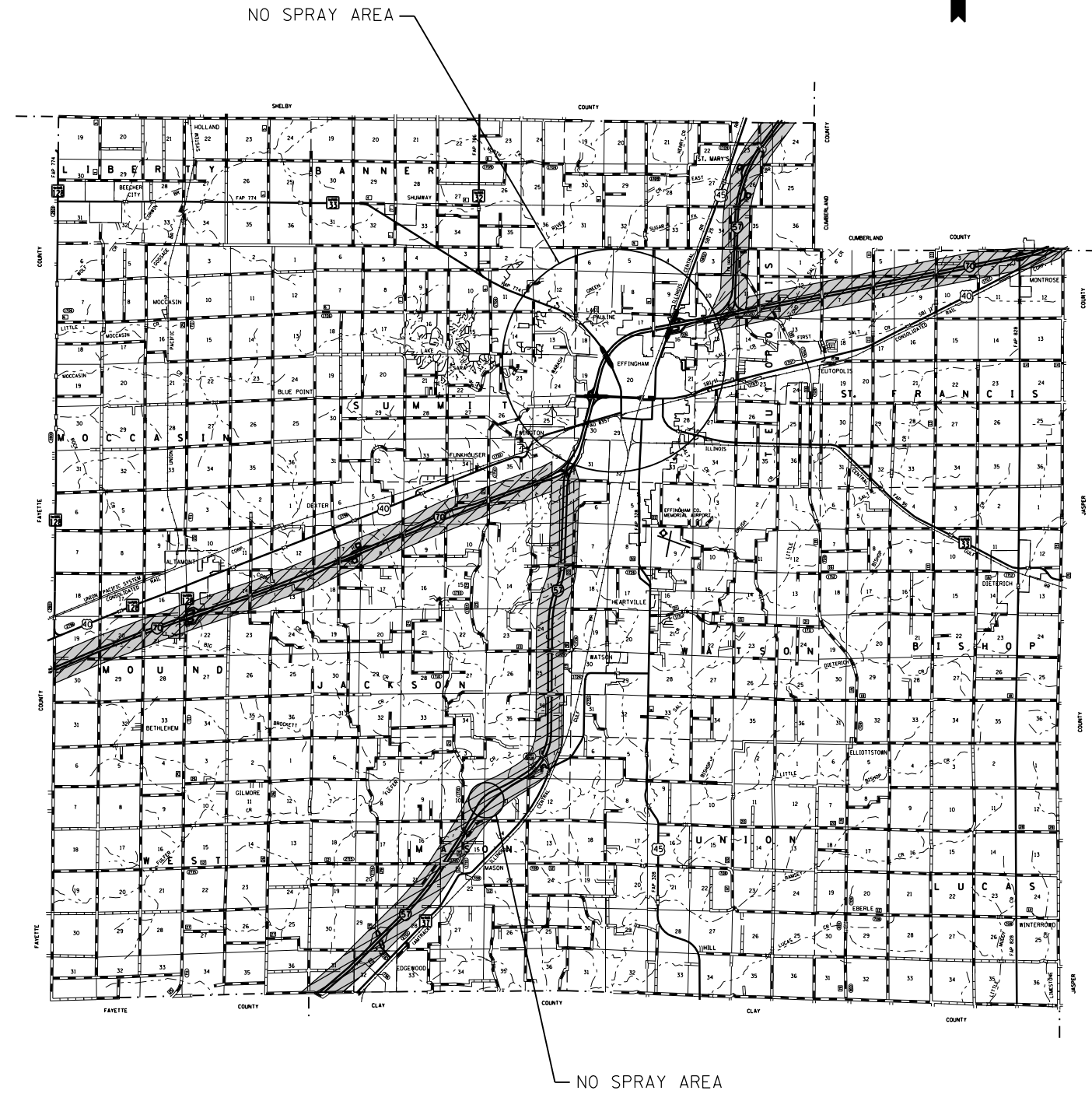
|                              |            |           |
|------------------------------|------------|-----------|
| USER NAME = steffenmk        | DESIGNED - | REVISED - |
|                              | DRAWN -    | REVISED - |
| PLOT SCALE = 100.0000' / in. | CHECKED -  | REVISED - |
| PLOT DATE = 10/13/2017       | DATE -     | REVISED - |



FAYETTE COUNTY LOCATION MAP



EFFINGHAM COUNTY LOCATION MAP



|  |                              |            |           |
|--|------------------------------|------------|-----------|
| FILE NAME =  | USER NAME = steffennk        | DESIGNED - | REVISED - |
| pw\1\084EBIDINTEG\illinois.gov\PI\DOT\Documents\DOT Offices\District 7\Projects\74820\Drawings\CAD\Sheets\0774820-sht location |                              | CHECKED -  | REVISED - |
| Default  | PLOT SCALE = 100.0000' / in. | DATE -     | REVISED - |
|  | PLOT DATE = 10/13/2017       |            |           |

STATE OF ILLINOIS  
DEPARTMENT OF TRANSPORTATION

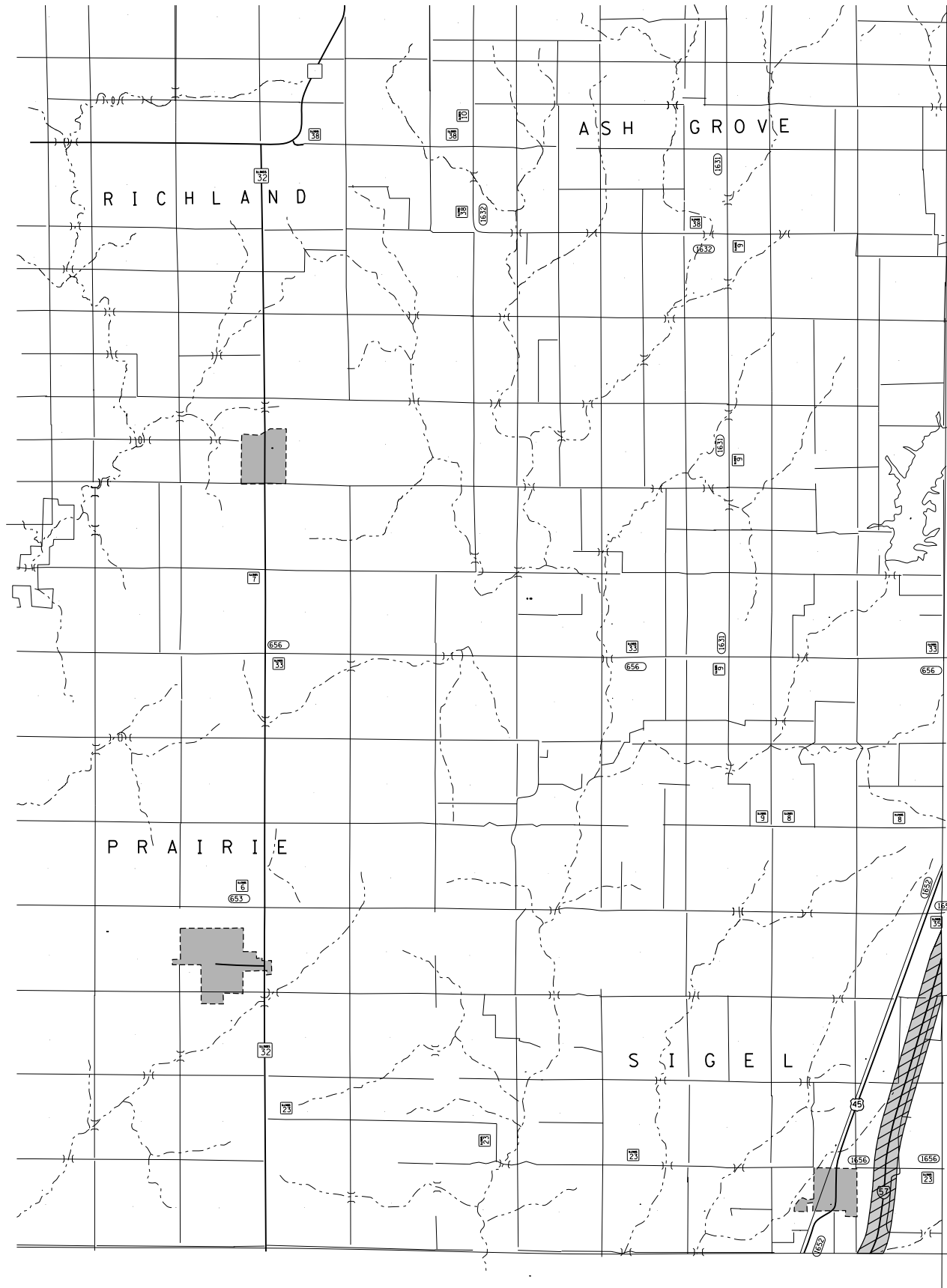
FAYETTE AND EFFINGHAM COUNTIES  
LOCATIONS MAPS

SCALE: N/A SHEET 1 OF 3 SHEETS STA. TO STA.

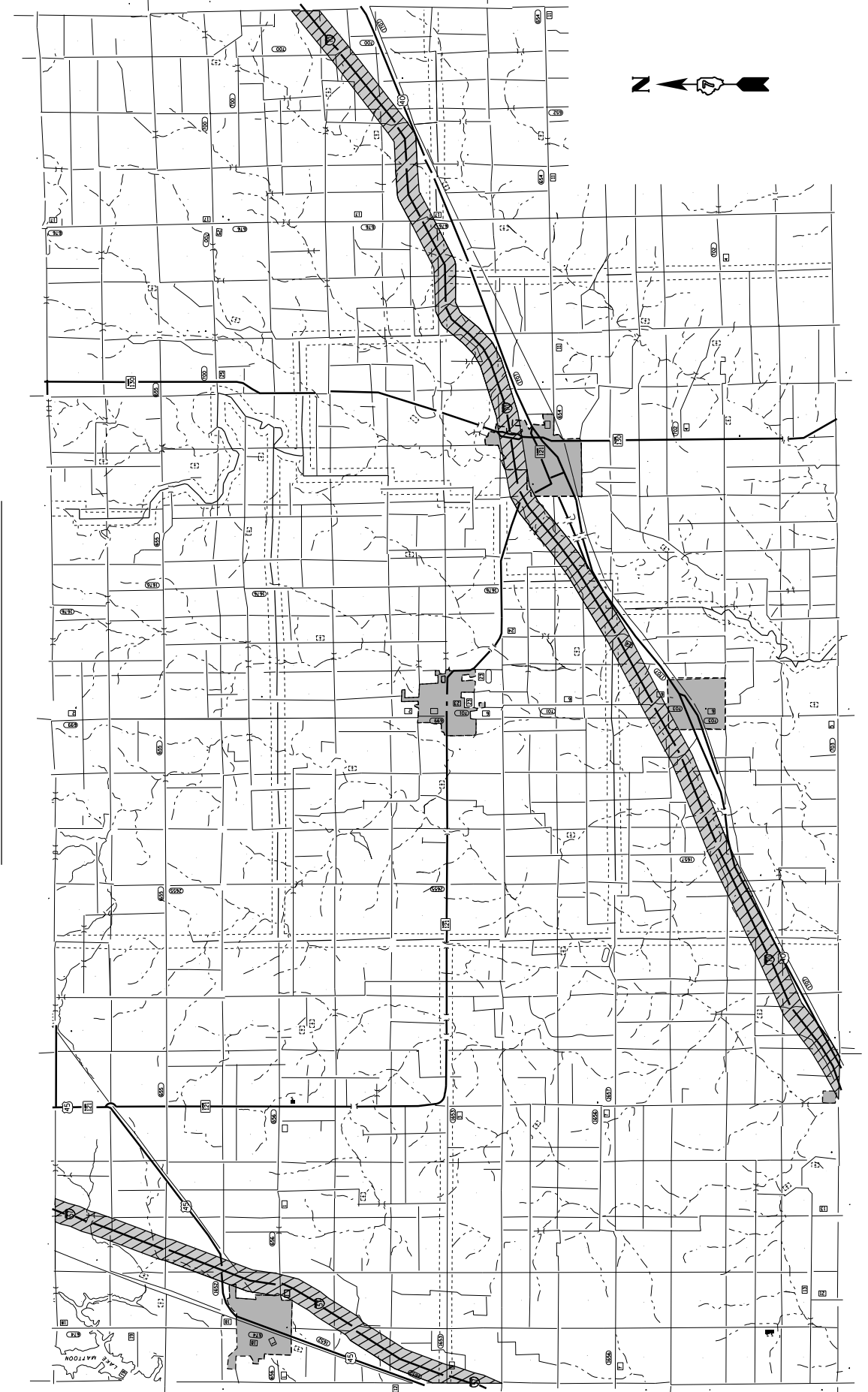
• D7 WEED CONTROL SPRAYING 2018

| F.A. RTE.                 | SECTION | COUNTY  | TOTAL SHEETS       | SHEET NO. |
|---------------------------|---------|---------|--------------------|-----------|
| VAR                       | *       | VARIOUS | 6                  | 4         |
|                           |         |         | CONTRACT NO. 74820 |           |
| ILLINOIS FED. AID PROJECT |         |         |                    |           |

SHELBY COUNTY LOCATION MAP



CUMBERLAND COUNTY LOCATION MAP

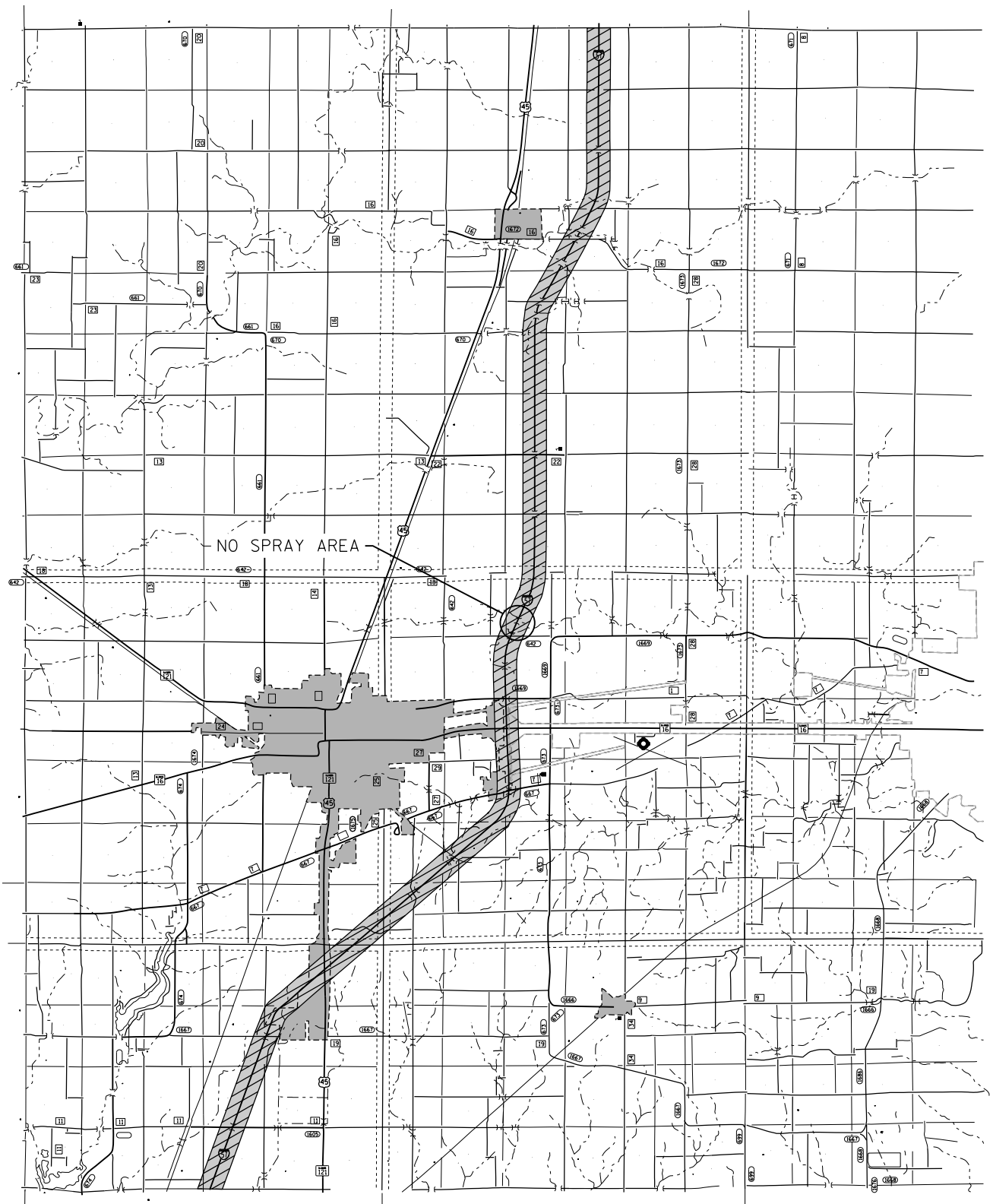


|   |                              |            |           |
|---|------------------------------|------------|-----------|
| FILE NAME =   | USER NAME = steffenk         | DESIGNED - | REVISED - |
| pw\11\084EBIDINTEG.illinois.gov\PIWIDOT\Documents\DOT Offices\District 7\Projects\74820\DRAWING\CAD\Sheets\D774820-sht location.d |                              | DRAWN -    | REVISED - |
| Default   | PLOT SCALE = 100.0000' / in. | CHECKED -  | REVISED - |
|   | PLOT DATE = 10/13/2017       | DATE -     | REVISED - |

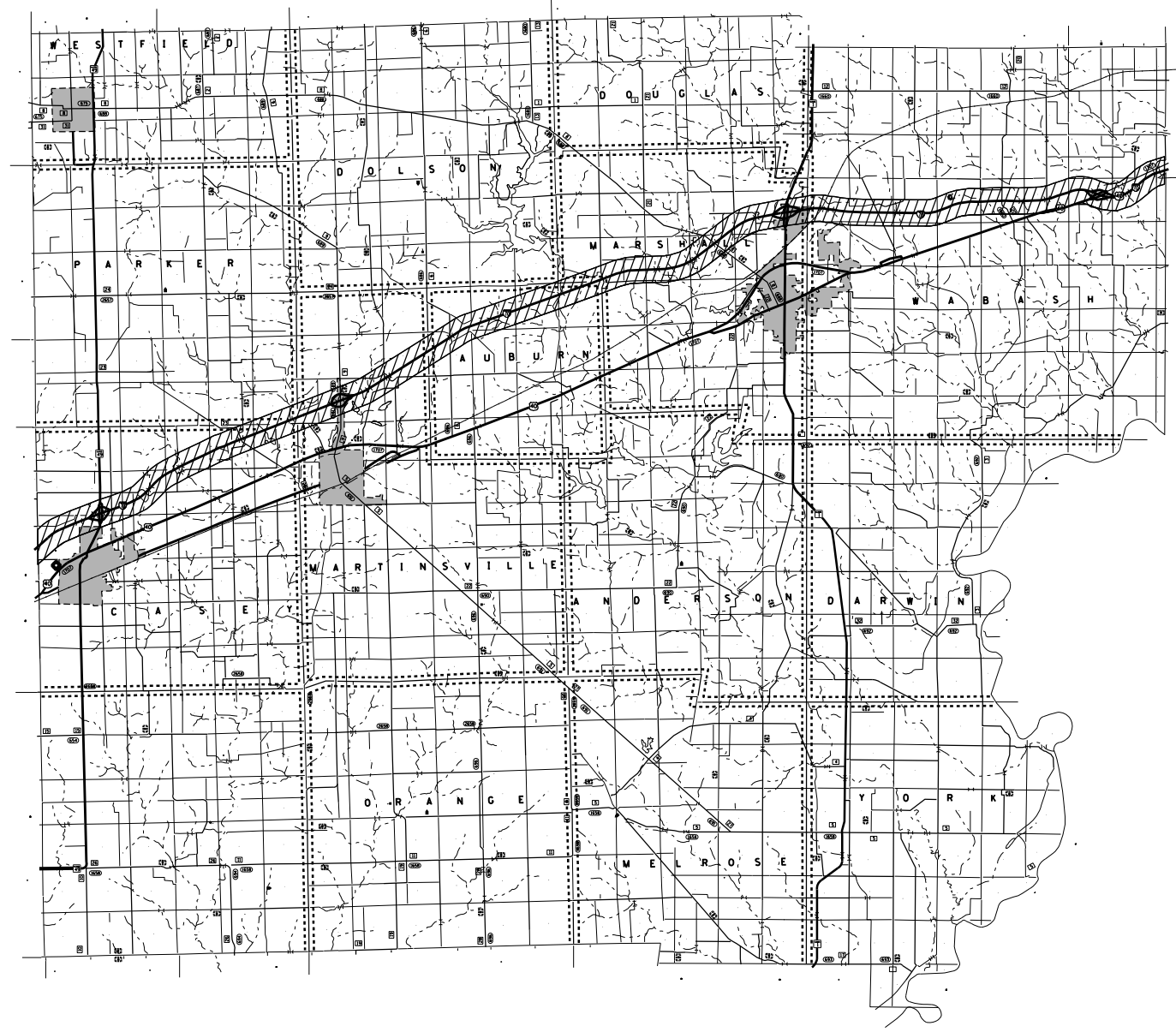
STATE OF ILLINOIS  
DEPARTMENT OF TRANSPORTATION

|                                 |         |                     |                    |           |         |
|---------------------------------|---------|---------------------|--------------------|-----------|---------|
| SCALE: N/A                      |         | SHEET 2 OF 3 SHEETS |                    | STA.      | TO STA. |
| • D7 WEED CONTROL SPRAYING 2018 |         |                     |                    |           |         |
| F.A. R.T.E.                     | SECTION | COUNTY              | TOTAL SHEETS       | SHEET NO. |         |
| VAR                             | •       | VARIOUS             | 6                  | 5         |         |
|                                 |         |                     | CONTRACT NO. 74820 |           |         |
| ILLINOIS FED. AID PROJECT       |         |                     |                    |           |         |

COLES COUNTY LOCATION MAP



CLARK COUNTY LOCATION MAP



|   |                              |            |           |
|---|------------------------------|------------|-----------|
| FILE NAME =   | USER NAME = steffennk        | DESIGNED - | REVISED - |
| pw:\IL\084EBID\INTEG\illinois.gov\PWIDOT\Documents\IDOT Offices\District 7\Projects\74820\DRAWING\CAD\sheets\D774820-sht location |                              | DRAWN -    | REVISED - |
| Default   | PLOT SCALE = 100.0000' / in. | CHECKED -  | REVISED - |
|   | PLOT DATE = 10/13/2017       | DATE -     | REVISED - |

STATE OF ILLINOIS  
DEPARTMENT OF TRANSPORTATION

COLES AND CLARK COUNTIES  
LOCATIONS MAPS

SCALE: N/A SHEET 3 OF 3 SHEETS STA. TO STA.

• D7 WEED CONTROL SPRAYING 2018

| F.A. RTE.                 | SECTION | COUNTY | TOTAL SHEETS       | SHEET NO. |
|---------------------------|---------|--------|--------------------|-----------|
| VAR                       | •       |        | 6                  | 6         |
|                           |         |        | CONTRACT NO. 74820 |           |
| ILLINOIS FED. AID PROJECT |         |        |                    |           |