

STATE OF ILLINOIS
DEPARTMENT OF TRANSPORTATION

F.A.P. RTE.	SECTION	COUNTY	TOTAL SHEETS	SHEET NO.
726	130(RS-5,SR-1)	WILLIAMSON	33	1
ILLINOIS CONTRACT NO. 78592				

FOR INDEX OF SHEETS, SEE SHEET NO. 3
FOR SUMMARY OF QUANTITIES, SEE SHEET NO. 6-10
FOR STRUCTURAL PAVEMENT DESIGN INFORMATION, SEE SHEET NO. N/A

**PROPOSED
HIGHWAY PLANS**

FAP ROUTE 726 (IL 148)
SECTION 130(RS-5,SR-1)
PROJECT STPR-HSIP-E6CW(071)
RESURFACING & SAFETY SHOULDERS
WILLIAMSON COUNTY

TRAFFIC DATA

IL 148 TRAFFIC DATA
2018 ADT = 6,490 WITH 11.5% TRUCKS
2028 ADT = 7,170 WITH 11.5% TRUCKS
2038 ADT = 7,920 WITH 11.5% TRUCKS

TOWNSHIPS

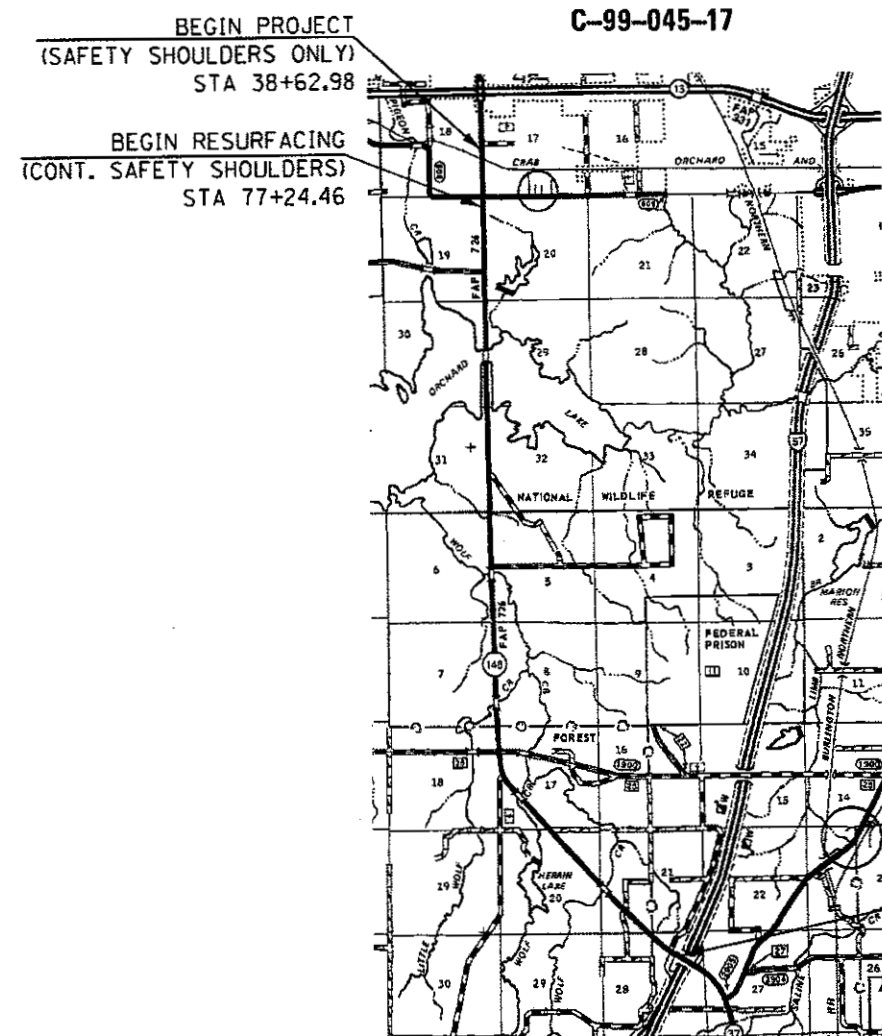
WEST MARION
SOUTHERN PRECINCT

DESIGN DESIGNATION : N/A
COORDINATE SYSTEM : N/A
POSTED SPEED : 45.55 MPH

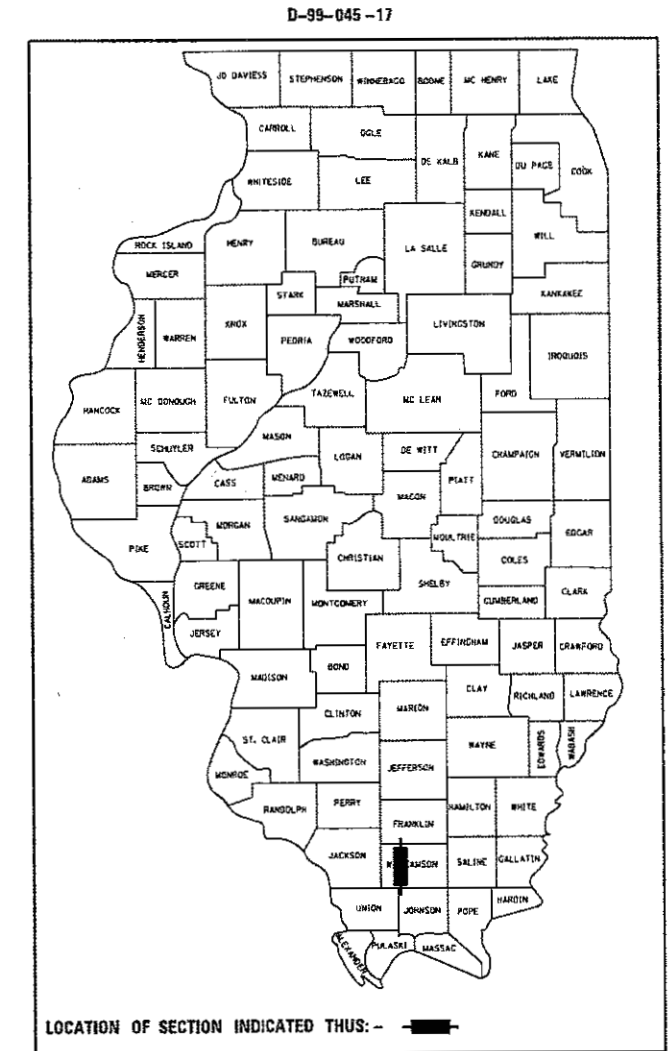
J.U.L.I.E.
JOINT UTILITY LOCATION INFORMATION FOR EXCAVATION
1-800-892-8123
OR 811

PROJECT ENGINEER: CHARLES STEIN
PROJECT DESIGNER: EHREN KIRBY

CONTRACT NO. 78592



GROSS LENGTH = 46,908.92 FT. = 8.884 MILES
NET LENGTH = 45,069.97 FT. = 8.536 MILES




STATE OF ILLINOIS
DEPARTMENT OF TRANSPORTATION


SUBMITTED Oct 20 2017
Jeffrey L. Keen
REGION FIVE ENGINEER


Nov 30 2017
Manson M. Addis
ENGINEER OF DESIGN AND ENVIRONMENT

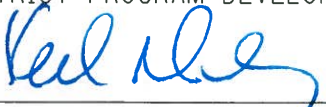
Nov 30 2017
[Signature]
DIRECTOR OF PROGRAM DEVELOPMENT


PRINTED BY THE AUTHORITY
OF THE STATE OF ILLINOIS


Prepared By: 
DISTRICT STUDIES & PLANS ENGINEER

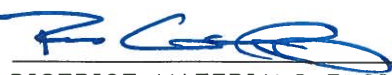
Examined By: 
DISTRICT LAND ACQUISITION ENGINEER

Examined By: 
DISTRICT PROGRAM DEVELOPMENT ENGINEER

Examined By: 
DISTRICT OPERATIONS ENGINEER

Examined By: 
DISTRICT PROJECT IMPLEMENTATION ENGINEER

Examined By: 
DISTRICT CONSTRUCTION ENGINEER

Examined By: 
DISTRICT MATERIALS ENGINEER

FILE NAME =	USER NAME = kirbyea	DESIGNED -	REVISED -
pw:\IL084EBIDINTEG,illinois.gov:PWIDOT\Documents\IDOT Offices\District 9\Projects\78592\CADDData\CADs\DWG\78592-5ht.dgn		CHECKED -	REVISED -
Default	PLOT SCALE = 100.0000' / in.	DATE -	REVISED -
	PLOT DATE = 10/6/2017		

**STATE OF ILLINOIS
DEPARTMENT OF TRANSPORTATION**

SIGNATURE SHEET			
SCALE:	SHEET	OF	SHEETS
		STA.	TO STA.

F.A.P. RTE.	SECTION	COUNTY	TOTAL SHEETS	SHEET NO.
726	130(R5-5,SR-1)	WILLIAMSON	33	2
			CONTRACT NO. 78592	
		ILLINOIS	FED. AID PROJECT	

MTD CROSSING RESTRICTIONS TABLE

SN & CENTERLINE STATION ROUTE (148)	EXISTING FILL HEIGHT OVER BOX CULVERT	THICKNESS OF EXISTING PAVEMENT OVER BOX CULVERT	MTD CROSSING RESTRICTIONS
	FOOT	FOOT	
SN 100-7041 (STA 34+60)	1.9	0.9	NO MTD
SN 100-0069 (STA. 143+67)	N/A	N/A	EMPTIED
SN 100-0074 (STA. 242+86)	N/A	N/A	EMPTIED
SN 100-7040 (STA. 254+30)	3.3	0.8	NONE
SN 100-0036 (STA. 312+57)	N/A	N/A	EMPTIED
SN 100-0037 (STA. 364+04)	N/A	N/A	EMPTIED
SN 100-7038 (STA. 385+50)	20.3	1.1	EMPTIED
SN 100-7039 (STA. 396+90)	10.5	1.1	NONE
SN 100-7126 (STA. 405+30)	19	1.1	NONE
SN 100-0038 (STA. 426+65)	N/A	N/A	EMPTIED
SN 100-7037 (STA. 0+60)	24.6	1.1	NONE
SN 100-0039 (STA. 20+50)	N/A	N/A	EMPTIED

HIGHWAY STANDARDS

000001-06_STANDARDSYMBOLSABBREVIATIONS&PATTERNS
 001001-02_AREASOFREINFREBARS
 001006_DECIMALOFINCH&FOOT
 442101-08_CLASSBPATCHES
 442201-03_CLASSC&DPATCHES
 482011-03_HMASHLDSTRIPS(SHLDS) WRESURFORWIDEN&RESURFPROJ
 515001-03_NAMEPLATEFORBRIDGES
 606001-07_CONCCURBTYP&COMBOCONCC&G
 630001-12_STEELPLATEBEAMGRDRAIL
 630006_NONBLOCKEDSTEELPLATEBEAMGRDRAIL
 630101-10_STRONGPOSTGUARDRAILATTACHEDTOCULV
 630301-08_SHLDWIDENFORTYPE1GRDRAILTERMS
 631011-10_TRAFBARMTTYPE2
 631031-15_TRAFBARMTTYPE6
 631032-09_TRAFBARMTTYPE6A
 642006_SHOULDERRUMBLESTRIP8IN
 701001-02_OFFRDOP-2L2W-15FTMINFROMEOP
 701006-05_OFFRDOP-2L2W-15FTTTOEOP
 701011-04_OFFRDMOVINGOP-2L2W-DAYONLY
 701201-04_LNCLOSURE2L2W-DAYONLY
 701301-04_LNCLOSURE2L2W-SHORTTIMEOP
 701306-04_LNCLOSURE2L2W-SLOWMOVEOPDAYONLY45MPHORMORE
 701311-03_LNCLOSURE2L2W-MOVINGOPDAYONLY
 701326-04_LNCLOSURE2L2W-PVMTWIDENING45MPHORMORE
 701336-06_LNCLOSURE2L2W-WORKAREASINSERIES45MPHORMORE
 701901-07_TRAFCNTRLDEVICES
 725001-01_OBJECTANDTERMINALMARKERS
 780001-05_TYPICALPVMTMRKINGS
 781001-04_TYPICALAPPRAISEDREFLCPVMTMRKRS
 782006_GUARDRAILLANDBARRIERWALLREFLECTORMOUNTINGDETAILS
 420701-03_PAVEMENTWELDEDWIREREFINFORCEMENT
 701901-07_TRAFCNTRLDEVICES

STATION EQUATIONS

STA 2+26.82 BK = STA 50+55.20 AH
 STA 286+97.10 BK = STA 287+01.20 AH
 STA 461+98.50 BK = STA 0+00.00 AH
 STA 13+98.88 BK = STA 13+25.87 AH

OMISSION

RAILROAD STA 22+37.76 TO STA 22+28.76
 STA 11+30.71 TO STA 2+26.82
 STA 50+55.20 TO STA 57+92.70
 SN 100-0069 STA 143+67.39 TO STA 145+60.81
 SN 100-0074 STA 242+86.00 TO STA 244+51.00
 SN 100-0036 STA 312+57.00 TO STA 313+55.00
 SN 100-0037 STA 364+04.38 TO STA 365+03.63
 SN 100-0038 STA 426+65.25 TO STA 428+38.75
 SN 100-0039 STA 20+50.57 TO STA 23+80.57

MODEL: Default
FILE NAME: P:\1108\B&E\DOT\Illinois.gov\PIV\DOT\Documents\DOT_Offices\District 9\Projects\78592\CADD\Drawings\CAD\Drawings\78592_Sht.dgn

USER NAME = kirbyea	DESIGNED -	REVISED -
	DRAWN -	REVISED -
PLOT SCALE = 100.0000' / in.	CHECKED -	REVISED -
PLOT DATE = 10/20/2017	DATE -	REVISED -

**STATE OF ILLINOIS
DEPARTMENT OF TRANSPORTATION**

**MTD TABLE, STATION EQUATIONS AND OMISSIONS,
AND STANDARDS**

SCALE: SHEET OF SHEETS STA. TO STA.

F.A.P. RTE.	SECTION	COUNTY	TOTAL SHEETS	SHEET NO.
726	130(RS-5,SR-1)	WILLIAMSON	33	5
CONTRACT NO. 78592				
ILLINOIS FED. AID PROJECT				

SUMMARY OF QUANTITIES

COUNTY:	COUNTY:	WILLIAMSON	WILLIAMSON
ROUTE:	ROUTE:	IL 148	IL 148
FUNDING:	FUNDING:	80% FED / 20% STATE	90% FED / 10% STATE
LOCATION:	LOCATION:	RURAL	RURAL

CODE NUMBER	ITEM DESCRIPTION	UNIT	TOTAL QUANTITY		
				ROADWAY 0005	SAFETY 0021
20200600	EXCAVATING AND GRADING EXISTING SHOULDER	UNIT	811		811
25000200	SEEDING, CLASS 2	ACRE	4	4	
25000350	SEEDING, CLASS 7	ACRE	4	4	
25000400	NITROGEN FERTILIZER NUTRIENT	POUND	336	336	
25000500	PHOSPHORUS FERTILIZER NUTRIENT	POUND	336	336	
25000600	POTASSIUM FERTILIZER NUTRIENT	POUND	336	336	
25000700	AGRICULTURAL GROUND LIMESTONE	TON	8	8	
25100115	MULCH, METHOD 2	ACRE	8	8	
28000250	TEMPORARY EROSION CONTROL SEEDING	POUND	745	745	
40600290	BITUMINOUS MATERIALS (TACK COAT)	POUND	86,405	76,720	9,685
40600637	LEVELING BINDER (MACHINE METHOD), IL-9.5FG, N70	TON	4,800	4,800	
40600982	HOT-MIX ASPHALT SURFACE REMOVAL - BUTT JOINT	SQ YD	2,038	1,762	276
40600990	TEMPORARY RAMP	SQ YD	133	133	
40603340	HOT-MIX ASPHALT SURFACE COURSE, MIX "D", N70	TON	9,489	9,489	

MODEL: D:\p\h\110848EB\INTEG...
 FILE NAME: P:\110848EB\INTEG...

14

SUMMARY OF QUANTITIES - CONT

COUNTY:	COUNTY:	WILLIAMSON	WILLIAMSON
ROUTE:	ROUTE:	IL 148	IL 148
FUNDING:	FUNDING:	80% FED / 20% STATE	90% FED / 10% STATE
LOCATION:	LOCATION:	RURAL	RURAL

CODE NUMBER	ITEM DESCRIPTION	UNIT	TOTAL QUANTITY	ROADWAY	SAFETY
				0005	0021
40800050	INCIDENTAL HOT-MIX ASPHALT SURFACING	TON	170	170	
42001300	PROTECTIVE COAT	SQ YD	8	8	
44000152	HOT-MIX ASPHALT SURFACE REMOVAL, 3/4"	SQ YD	42,013	42,013	
44000155	HOT-MIX ASPHALT SURFACE REMOVAL, 1 1/2"	SQ YD	72,483	72,483	
44000160	HOT-MIX ASPHALT SURFACE REMOVAL, 2 3/4"	SQ YD	1,469	1,469	
44200050	WELDED WIRE REINFORCEMENT	SQ YD	68	68	
44200956	CLASS B PATCHES, TYPE II, 9 INCH	SQ YD	24	24	
44200962	CLASS B PATCHES, TYPE III, 9 INCH	SQ YD	15	15	
44200964	CLASS B PATCHES, TYPE IV, 9 INCH	SQ YD	53	53	
44201007	CLASS B PATCHES, TYPE II, 13 INCH	SQ YD	32	32	
44201019	CLASS B PATCHES, TYPE II, 14 INCH	SQ YD	254	254	
44201299	DOWEL BARS 1 1/2"	EACH	720	720	
44201373	CLASS C PATCHES, TYPE I, 12 INCH	SQ YD	4	4	
44201377	CLASS C PATCHES, TYPE II, 12 INCH	SQ YD	40	40	

MODEL: Default
 FILE NAME: p:\11084818\INTEG\Illinois.gov\PWD\DOT\Documents\DOT_Offices\District_3\Project\78592\CAD\Drawings\78592-SR-1.dgn

19

USER NAME = Kirbyea	DESIGNED -	REVISED -	
	DRAWN -	REVISED -	
PLOT SCALE = 100.0000' / in.	CHECKED -	REVISED -	
PLOT DATE = 10/20/2017	DATE -	REVISED -	

STATE OF ILLINOIS
DEPARTMENT OF TRANSPORTATION

SUMMARY OF QUANTITIES			
SCALE:	SHEET	OF	SHEETS
	STA.	TO STA.	

F.A.P. RTE.	SECTION	COUNTY	TOTAL SHEETS	SHEET NO.
726	130(RS-5,SR-1)	WILLIAMSON	33	7
CONTRACT NO. 78592				
ILLINOIS FED. AID PROJECT				

SUMMARY OF QUANTITIES - CONT

COUNTY:	COUNTY:	WILLIAMSON	WILLIAMSON
ROUTE:	ROUTE:	IL 148	IL 148
FUNDING:	FUNDING:	80% FED / 20% STATE	90% FED / 10% STATE
LOCATION:	LOCATION:	RURAL	RURAL

CODE NUMBER	ITEM DESCRIPTION	UNIT	TOTAL QUANTITY	ROADWAY 0005	SAFETY 0021
* 63000003	STEEL PLATE BEAM GUARDRAIL, TYPE A, 9 FOOT POSTS	FOOT	7,212.5	7,212.5	
* 63000019	NON-BLOCKED STEEL PLATE BEAM GUARDRAIL	FOOT	25	25	
* 63000030	STRONG POST GUARDRAIL ATTACHED TO CULVERT	FOOT	50	50	
* 63100045	TRAFFIC BARRIER TERMINAL, TYPE 2	EACH	1	1	
* 63100085	TRAFFIC BARRIER TERMINAL, TYPE 6	EACH	4	4	
* 63100087	TRAFFIC BARRIER TERMINAL, TYPE 6A	EACH	4	4	
* 63100167	TRAFFIC BARRIER TERMINAL, TYPE 1 (SPECIAL) TANGENT	EACH	15	15	
63200310	GUARDRAIL REMOVAL	FOOT	8,297	8,297	
64200108	SHOULDER RUMBLE STRIPS, 8 INCH	FOOT	87,947		87,947
67000400	ENGINEER'S FIELD OFFICE, TYPE A	CAL MO	7	3.5	3.5
67100100	MOBILIZATION	L SUM	1	0.5	0.5
70100450	TRAFFIC CONTROL AND PROTECTION, STANDARD 701201	L SUM	1	1	
70100460	TRAFFIC CONTROL AND PROTECTION, STANDARD 701306	L SUM	1	0.5	0.5
70100500	TRAFFIC CONTROL AND PROTECTION, STANDARD 701326	L SUM	1		1

* SPECIALTY ITEM

MODEL: Default
FILE NAME: \\p0108\FB\BID\NTEG\Illinois.gov\PIBDOT\Documents\DOT_Offices\District_5\Projects\78592\CAD\Drawn\CAD\Sheet0578592_Sht.dgn

19

USER NAME = kirbyea	DESIGNED -	REVISED -	
	DRAWN -	REVISED -	
PLOT SCALE = 100.0000' / in.	CHECKED -	REVISED -	
PLOT DATE = 10/20/2017	DATE -	REVISED -	

**STATE OF ILLINOIS
DEPARTMENT OF TRANSPORTATION**

SUMMARY OF QUANTITIES

SCALE: SHEET OF SHEETS STA. TO STA.

F.A.P. RTE.	SECTION	COUNTY	TOTAL SHEETS	SHEET NO.
726	130(RS-5,SR-1)	WILLIAMSON	33	9
			CONTRACT NO. 78592	
ILLINOIS FED. AID PROJECT				

SUMMARY OF QUANTITIES - CONT

COUNTY:	COUNTY:	WILLIAMSON	WILLIAMSON
ROUTE:	ROUTE:	IL 148	IL 148
FUNDING:	FUNDING:	80% FED / 20% STATE	90% FED / 10% STATE
LOCATION:	LOCATION:	RURAL	RURAL
		ROADWAY	SAFETY
		0005	0021

CODE NUMBER	ITEM DESCRIPTION	UNIT	TOTAL QUANTITY	ROADWAY	SAFETY
70100600	TRAFFIC CONTROL AND PROTECTION, STANDARD 701336	L SUM	1	1	
70103815	TRAFFIC CONTROL SURVEILLANCE	CAL DAY	16	16	
70300100	SHORT TERM PAVEMENT MARKING	FOOT	12,660	12,660	
70300150	SHORT TERM PAVEMENT MARKING REMOVAL	SQ FT	4,220	4,220	
70300210	TEMPORARY PAVEMENT MARKING LETTERS AND SYMBOLS	SQ FT	148	148	
70300220	TEMPORARY PAVEMENT MARKING - LINE 4"	FOOT	110,658	110,658	
70300260	TEMPORARY PAVEMENT MARKING - LINE 12"	FOOT	796	796	
70300280	TEMPORARY PAVEMENT MARKING - LINE 24"	FOOT	60	60	
* 72501000	TERMINAL MARKER - DIRECT APPLIED	EACH	15	15	
* 78009000	MODIFIED URETHANE PAVEMENT MARKING - LETTERS AND SYMBOLS	SQ FT	169	169	
* 78009004	MODIFIED URETHANE PAVEMENT MARKING - LINE 4"	FOOT	110,862	110,862	
* 78009012	MODIFIED URETHANE PAVEMENT MARKING - LINE 12"	FOOT	796	796	
* 78009024	MODIFIED URETHANE PAVEMENT MARKING - LINE 24"	FOOT	60	60	
* 78100100	RAISED REFLECTIVE PAVEMENT MARKER	EACH	594	594	

* SPECIALTY ITEM

MODEL: Default
FILE NAME: \\VIL084EIBDD\IT\EG\Illinois.gov\PW\DOT\Documents\DOT_Offices\District 9\Projects\78592\CAD\Drawn\CAD\Drawn\78592_Sht.dgn

SUMMARY OF QUANTITIES - CONT

COUNTY:	COUNTY:	WILLIAMSON	WILLIAMSON
ROUTE:	ROUTE:	IL 148	IL 148
FUNDING:	FUNDING:	80% FED / 20% STATE	90% FED / 10% STATE
LOCATION:	LOCATION:	RURAL	RURAL

CODE NUMBER	ITEM DESCRIPTION	UNIT	TOTAL QUANTITY	ROADWAY 0005	SAFETY 0021
* 78200005	GUARDRAIL REFLECTORS, TYPE A	EACH	103	103	
78300200	RAISED REFLECTIVE PAVEMENT MARKER REMOVAL	EACH	482	482	
X0326697	CENTER LINE - RUMBLE STRIP - 8"	FOOT	9,262		9,262
X2503100	MOWING	UNIT	451	451	
X6330900	VERTICAL ADJUSTMENT OF GUARDRAIL	FOOT	2,110	2,110	
X7015005	CHANGEABLE MESSAGE SIGN	CAL DAY	28	28	
X7030005	TEMPORARY PAVEMENT MARKING REMOVAL	SQ FT	37,940	37,940	
Z0033700	LONGITUDINAL JOINT SEALANT	FOOT	43,592	43,592	
Z0034105	MATERIAL TRANSFER DEVICE	TON	14,289	14,289	
Z0048665	RAILROAD PROTECTIVE LIABILITY INSURANCE	L SUM	1		1

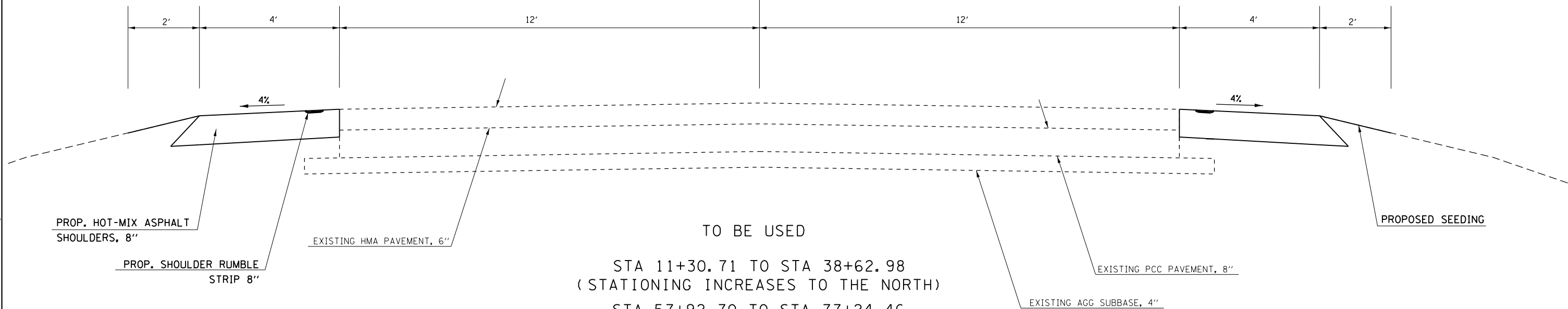
* SPECIALTY ITEM

MODEL: Default
FILE NAME: E:\VULB\BID\INTEG Illinois.gov\PIRD\DOT\Documents\DOT Office\District 9\projects\78592\CAD\Drawings\DOT 78592 Sht.dgn

TYPICAL SECTION

IL 148 (FAP 726)

CL IL 148



PROP. HOT-MIX ASPHALT SHOULDERS, 8"

PROP. SHOULDER RUMBLE STRIP 8"

EXISTING HMA PAVEMENT, 6"

TO BE USED

STA 11+30.71 TO STA 38+62.98
(STATIONING INCREASES TO THE NORTH)

STA 57+92.70 TO STA 77+24.46
(STATIONING INCREASES TO THE SOUTH)

EXISTING PCC PAVEMENT, 8"

EXISTING AGG SUBBASE, 4"

PROPOSED SEEDING

STATION EQUATIONS

$$\text{STA } 2+26.82 \text{ BK} = \text{STA } 50+55.20 \text{ AH}$$

OMISSION

RAILROAD STA 22+37.76 TO STA 22+28.76

STA 11+30.71 TO STA 2+26.82

STA 50+55.20 TO STA 57+92.70

MODEL: Default
FILE: \\nas01c.psu.edu\B\BID\NTEC\Illinois\gov\FWIDOT\Documents\DOT_Offices\District 9\Projects\78592_CADD\Drawings\78592_Sht.dwg

USER NAME = kirbyea	DESIGNED -	REVISED -
	DRAWN -	REVISED -
PLOT SCALE = 100.0000 ' / in.	CHECKED -	REVISED -
PLOT DATE = 10/20/2017	DATE -	REVISED -

**STATE OF ILLINOIS
DEPARTMENT OF TRANSPORTATION**

TYPICAL SECTION

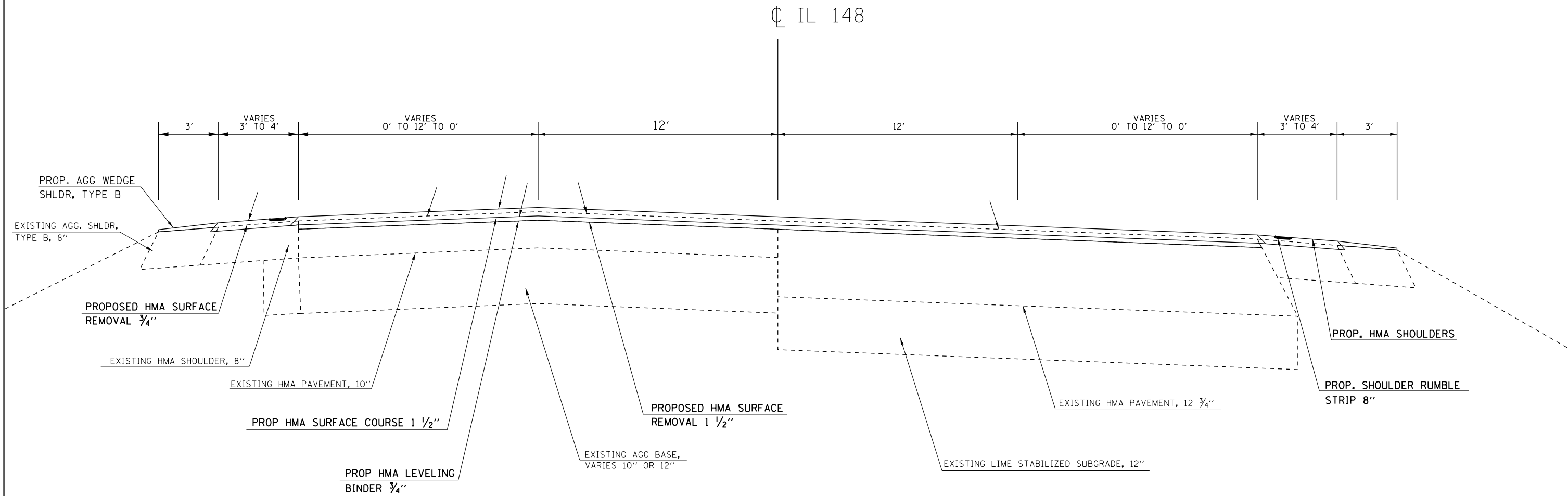
SCALE: SHEET OF SHEETS STA. TO STA.

F.A.P. RTE.	SECTION	COUNTY	TOTAL SHEETS	SHEET NO.
726	130(RS-5,SR-1)	WILLIAMSON	33	12
CONTRACT NO. 78592				
ILLINOIS FED. AID PROJECT				

TYPICAL SECTION

IL 148 (FAP 726)

C IL 148

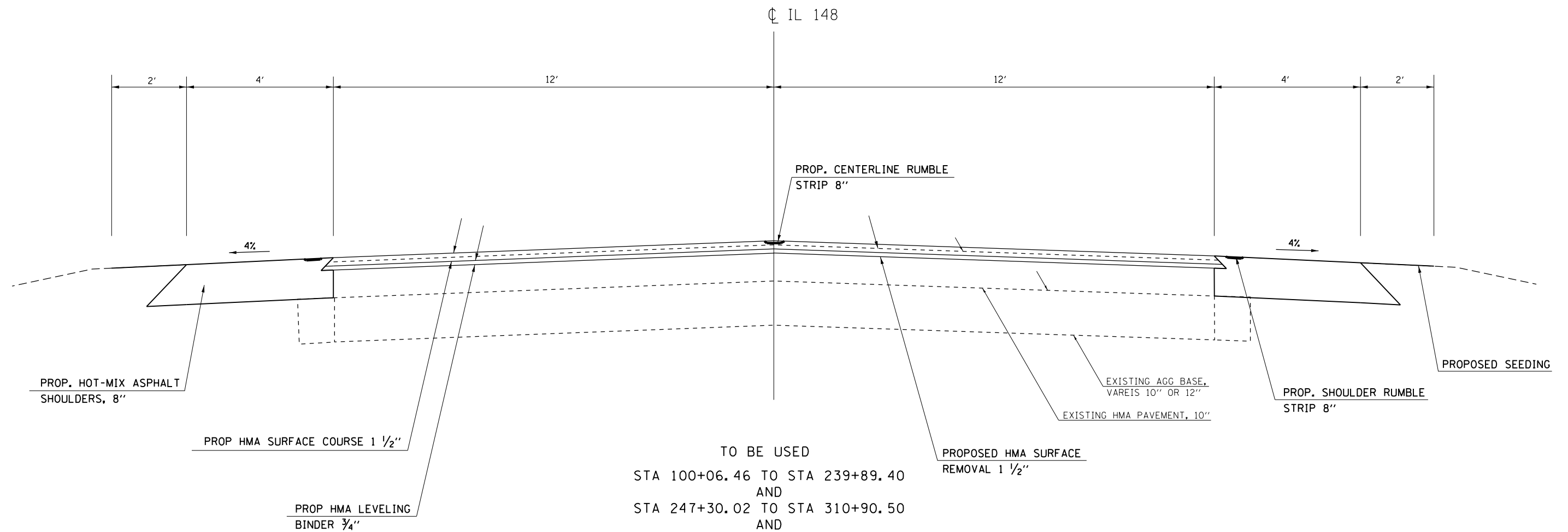


TO BE USED
STA 77+24.46 TO STA 100+06.46

FILE NAME =	USER NAME = kirbyea	DESIGNED -	REVISED -	STATE OF ILLINOIS DEPARTMENT OF TRANSPORTATION	TYPICAL SECTION	F.A.P. RTE.	SECTION	COUNTY	TOTAL SHEETS	SHEET NO.	
						726	130(RS-5,SR-1)	WILLIAMSON	33	13	
						CONTRACT NO. 78592					
						ILLINOIS FED. AID PROJECT					
				SCALE:	SHEET OF SHEETS	STA.	TO STA.				

TYPICAL SECTION

IL 148 (FAP 726)



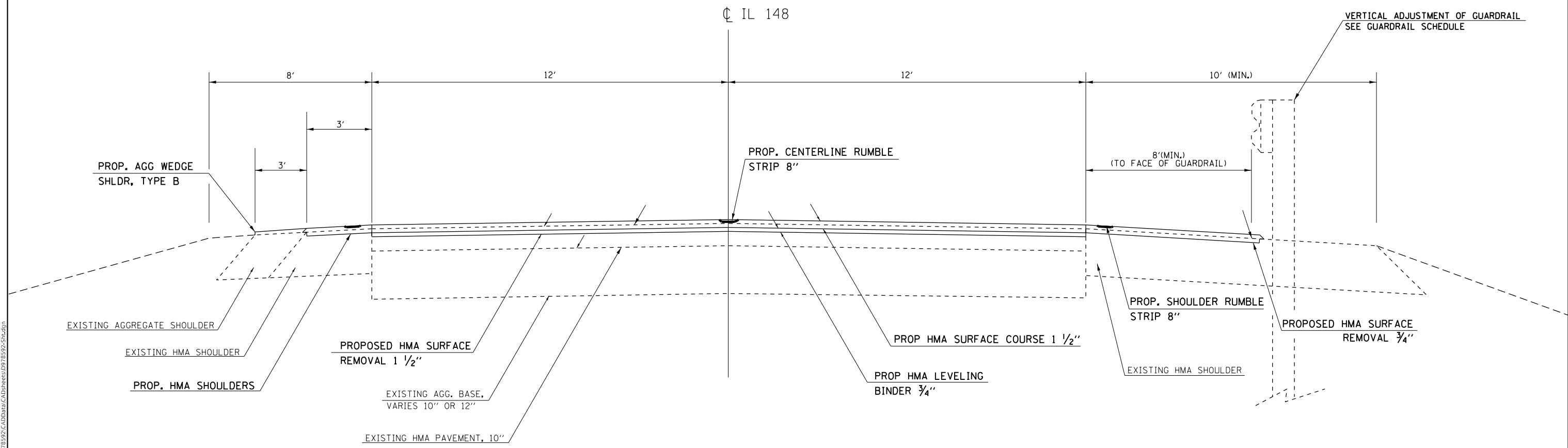
TO BE USED
 STA 100+06.46 TO STA 239+89.40
 AND
 STA 247+30.02 TO STA 310+90.50
 AND
 STA 315+97.50 TO STA 336+61.25

STATION EQUATIONS
 STA 286+97.10 BK = STA 287+01.20 AH
OMISSION
 SN 100-0069 STA 143+67.39 TO STA 145+60.81

FILE NAME =	USER NAME = kirbyea	DESIGNED -	REVISED -	STATE OF ILLINOIS DEPARTMENT OF TRANSPORTATION	TYPICAL SECTION			F.A.P. RTE.	SECTION	COUNTY	TOTAL SHEETS	SHEET NO.
<small>pwz\IL084EBIDINTEG.illinois.gov\PWIDOT\Documents\IDOT_Offices\District 9\Projects\78592\CADDData\CADs\DRAWING\92-514.dgn</small>								726	130(RS-5,SR-1)	WILLIAMSON	33	14
<small>PLOT SCALE = 100.0000 ' / in.</small>					CONTRACT NO. 78592							
<small>Default</small>					ILLINOIS FED. AID PROJECT							

TYPICAL SECTION

IL 148 (FAP 726)



TYPICAL SHOULDER WITHOUT GUARDRAIL

TYPICAL SHOULDER WITH GUARDRAIL

TO BE USED
 STA 239+89.40 TO STA 247+30.02
 STA 310+90.50 TO STA 315+97.50

OMISSION

SN 100-0074 STA 242+86.00 TO STA 244+51.00
 SN 100-0036 STA 312+57.00 TO STA 313+55.00

MODEL: Default
 FILE: Model - Proj\UL084EID01\TEC\Illinois\gov\PIW\DOT\Documents\DOT - Offices\Director\9\Projects\78592\CaddData\CAD\Sheet\078592-Std.dwg
 PLOT DATE = 10/20/2017

USER NAME = kirbyea	DESIGNED -	REVISED -
	DRAWN -	REVISED -
PLOT SCALE = 100.0000' / in.	CHECKED -	REVISED -
PLOT DATE = 10/20/2017	DATE -	REVISED -

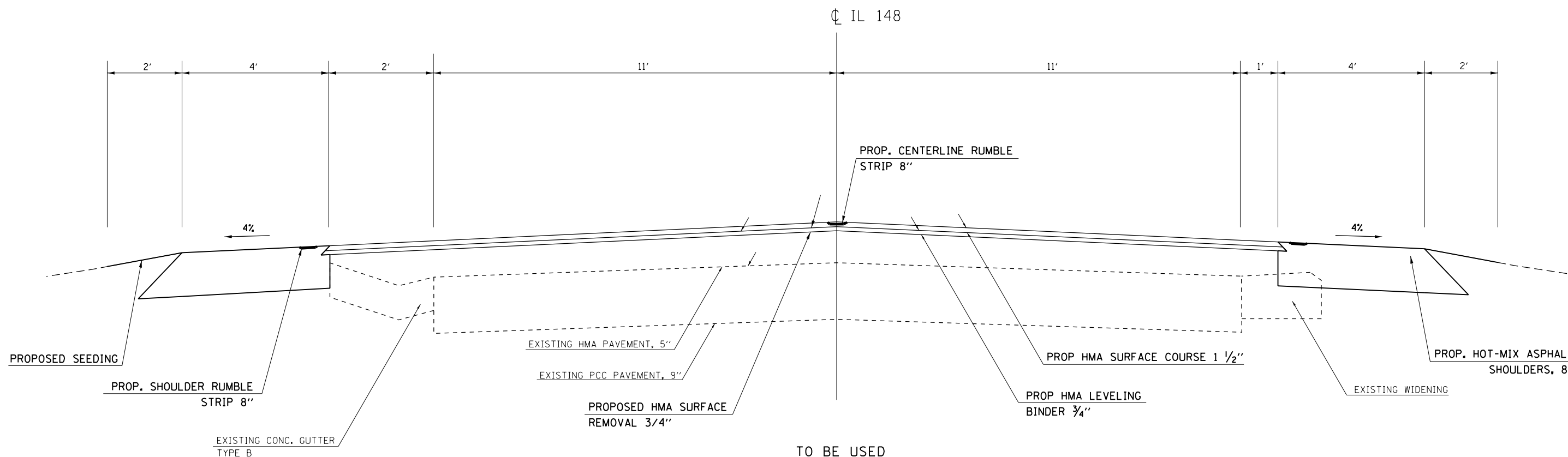
**STATE OF ILLINOIS
 DEPARTMENT OF TRANSPORTATION**

TYPICAL SECTION	
SCALE:	SHEET OF SHEETS STA. TO STA.

F.A.P. RTE.	SECTION	COUNTY	TOTAL SHEETS	SHEET NO.
726	130(RS-5,SR-1)	WILLIAMSON	33	15
CONTRACT NO. 78592				
ILLINOIS FED. AID PROJECT				

TYPICAL SECTION

IL 148 (FAP 726)



TO BE USED
 STA 336+61.25 TO STA 15+00.00

STATION EQUATIONS

STA 461+98.50 BK = STA 0+00.00 AH
 STA 13+98.90 BK = STA 13+25.90 AH

OMISSION

SN 100-0037 STA 364+04.38 TO STA 365+03.63
 SN 100-0038 STA 426+65.25 TO STA 428+38.75

MODEL: Default
 FILE: \\nas01c.psu.edu\B8E8D8D1\TEC\Illinois\gov\PIV\DOT\Documents\DOT_Offices\Director\9\Projects\78592\CADD\Drawings\78592_Sht.dwg

USER NAME = kirbyea	DESIGNED -	REVISED -
	DRAWN -	REVISED -
PLOT SCALE = 100.0000' / in.	CHECKED -	REVISED -
PLOT DATE = 10/20/2017	DATE -	REVISED -

STATE OF ILLINOIS
DEPARTMENT OF TRANSPORTATION

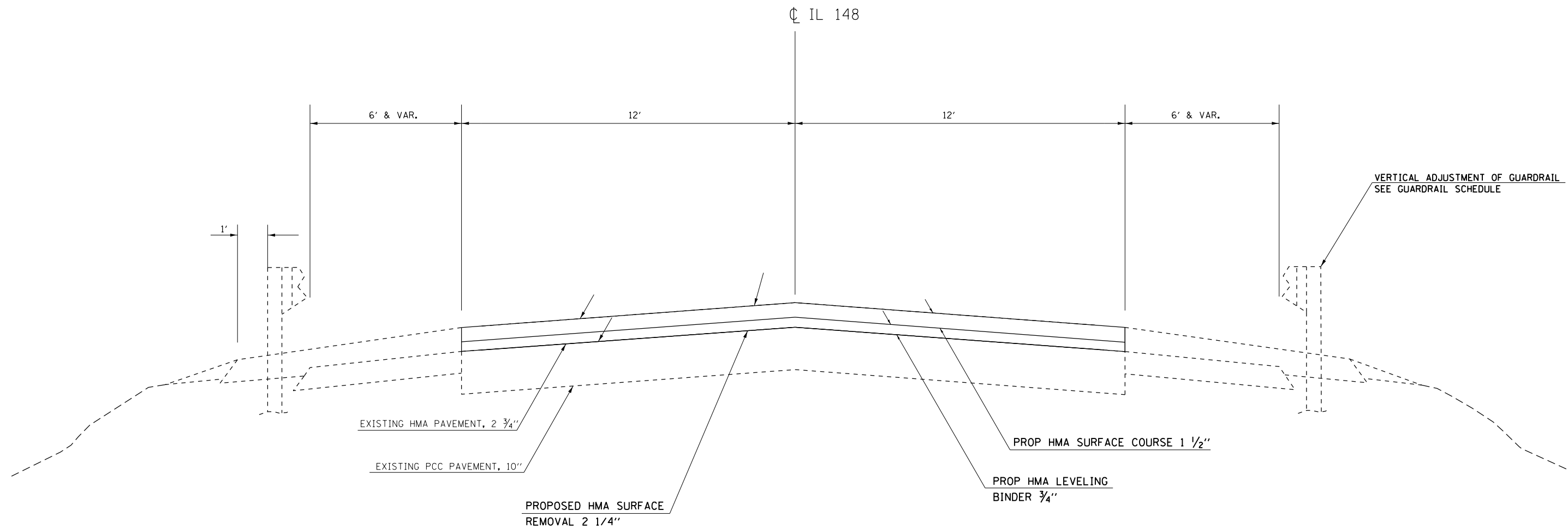
TYPICAL SECTION

SCALE: SHEET OF SHEETS STA. TO STA.

F.A.P. RTE.	SECTION	COUNTY	TOTAL SHEETS	SHEET NO.
726	130(RS-5,SR-1)	WILLIAMSON	33	16
CONTRACT NO. 78592				
ILLINOIS FED. AID PROJECT				

TYPICAL SECTION

IL 148 (FAP 726)



TO BE USED
STA 15+00.00 TO STA 20+50.57

MODEL: Default
 FILE: \\mhc-pw\ulb\B&E\ID\ITEC\Illinois\pwr\pwr\DOT\Documents\1\DOT_Offices\1\78592\CADD\Drawings\78592_Sht.dwg

USER NAME = kirbyea	DESIGNED -	REVISED -
	DRAWN -	REVISED -
PLOT SCALE = 100.0000' / in.	CHECKED -	REVISED -
PLOT DATE = 10/20/2017	DATE -	REVISED -

**STATE OF ILLINOIS
DEPARTMENT OF TRANSPORTATION**

TYPICAL SECTION

SCALE: SHEET OF SHEETS STA. TO STA.

F.A.P. RTE.	SECTION	COUNTY	TOTAL SHEETS	SHEET NO.
726	130(RS-5,SR-1)	WILLIAMSON	33	17
CONTRACT NO. 78592				
ILLINOIS FED. AID PROJECT				

RESURFACING SCHEDULE

LOCATION STATION TO STATION	EXIST. PAVEMENT LENGTH (INFOR. ONLY)	EXIST. PAVEMENT WIDTH	TEMP. RAMPS	HMA LEVELING BINDER, N70 FG (3/4")	HMA LEVELING BINDER, N70 FG (1 1/4")	HMA SURFACE CSE., MIX D, N70 (1 1/2")	MATERIAL TRANSFER DEVICE	HMA SURFACE REMOVAL, 3/4"	HMA SURFACE REMOVAL, 1 1/2"	HMA SURFACE REMOVAL, 2 3/4"	HMA SURFACE REMOVAL - BUTT JOINT	LONG. JOINT SEALANT	BITUMINOUS MATERIALS (TACK COAT)	CENTERLINE RUMBLE STRIPS, 8 INCH
	FOOT	FOOT	SQ YD	TON	TON	TON	TON	SQ YD	SQ YD	SQ YD	SQ YD	FOOT	POUND	FOOT
IL 148														
OMIT STA. 38+62.98 TO STA. 2+26.82														
EO. STA 2+26.82 BK TO STA 50+55.20 AH														
OMIT STA. 50+55.20 TO STA. 77+24.46														
STA 77+24.46 TO STA 100+06.46	2282.00	VARIES (24' - 48')	14	399		799	1198		9518		40	6004	6371	
STA 100+06.46 TO STA 143+67.40	4360.94	24	14	493		982	1475		11630		40	4361	7850	1091
GAP S.N. 100-0069 STA. 143+67.40 TO STA. 145+60.80														
STA 145+60.80 TO STA 242+86.00	9725.20	24	28	1098		2190	3288		25934		80	9726	17506	2432
GAP S.N. 100-0074 STA. 242+86.00 TO STA. 244+51.00														
STA 244+51.00 TO STA 286+97.10	4246.10	24	14	480		957	1437		11323		40	4247	7643	1062
EO. STA 286+97.10 BK TO STA 287+01.20 AH														
STA 287+01.20 TO STA 312+57.00	2555.80	24	14	289		576	865		6816		40	2556	4601	639
GAP S.N. 100-0036 STA. 312+57.00 TO STA. 313+55.00														
STA 313+55.00 TO STA 336+61.25	2306.25	24	14	261		520	781		6150		40	2307	4152	577
STA 336+61.25 TO STA 364+04.38	2743.13	25	7	323		644	967	7620			80	2744	5144	686
GAP S.N. 100-0037 STA. 364+04.38 TO STA. 365+03.63														
STA 365+03.63 TO STA 426+65.25	6161.62	25	14	725		1445	2170	17116			160	6162	11554	1541
GAP S.N. 100-0038 STA. 426+65.25 TO STA. 428+38.75														
STA 428+38.75 TO STA 461+98.50	3359.75	25	7	395		788	1183	9333			80	3360	6300	840
EO. STA 461+98.50 BK TO STA 0+00.00 AH														
STA 0+00.00 TO STA 13+98.88	1398.88	25		165		329	494	3886				1399	2623	350
EO. STA 13+98.88 BK TO STA 13+25.87 AH														
STA 13+25.87 TO STA 15+00.00	174.13	25		21		41	62	484				175	327	44
STA 15+00.00 TO STA 20+50.57	550.57	24	7		103	124	227		1469			551	992	
VISITOR'S CENTER ENTRANCE														
STA 10+12.00 TO STA 10+76.00	64	VARIES		24		47	71		553				373	
PIGEON CREEK RD														
STA 9+00.00 TO STA 9+76.00	76	VARIES		24		47	71		559				378	
PROJECT TOTALS														
			133	4697	103	9489	14289	38439	72483	1469	600	43592	75814	9262

MODEL: Default
 FILE: \\u:\b\8\BID\NTEC\Illinois\gov\PIWDOT\Documents\10DOT_Offices\Director\9\Projects\78592\CaddData\CAD\papers\0778592_Sht.dgn

USER NAME = kirbyea	DESIGNED -	REVISED -
	DRAWN -	REVISED -
PLOT SCALE = 120,0000' / in.	CHECKED -	REVISED -
PLOT DATE = 10/20/2017	DATE -	REVISED -

**STATE OF ILLINOIS
DEPARTMENT OF TRANSPORTATION**

RESURFACING SCHEDULE

SCALE: SHEET OF SHEETS STA. TO STA.

F.A.P. RTE.	SECTION	COUNTY	TOTAL SHEETS	SHEET NO.
726	130(RS-5,SR-1)	WILLIAMSON	33	18
CONTRACT NO. 78592				
ILLINOIS FED. AID PROJECT				

PAVEMENT MARKING SCHEDULE

LOCATION STATION TO STATION										MODIFIED URETHANE PAVEMENT MARKING							RAISED REFL PAVEMENT MARKER	RAISED REFL PAVEMENT MARKER REMOVAL	NOTES				
										LINE - 4" WHITE	LINE - 4" YELLOW				LINE - 12" YELLOW	LINE - 12" WHITE				LINE - 24" WHITE	LETTERS AND SYMBOLS		
										SOLID FOOT	SOLID LT FOOT	SKIP - DASH FOOT	SOLID RT FOOT	DOUBLE SOLID FOOT	SOLID FOOT	SOLID FOOT				SOLID FOOT	WHITE SQ FT		
IL 148																							
	STA	77+24.46		TO	STA	77+39.46				30			4	15						1	1		
	STA	77+39.46		TO	STA	88+85.46				1146												LT. EDGE LINE	
	STA	87+43.43		TO	STA	89+63.30				290									37			S. BOUND RT. TRN. LANE, ISLAND	
	STA	88+21.50		TO	STA	89+21.50				100									37			S. BOUND LT. TRN. LANE	
	STA	89+88.57		TO	STA	90+25.57				120												ISLAND	
	STA	90+30.73		TO	STA	100+06.46				976												LT. EDGE LINE	
	STA	77+39.46		TO	STA	88+99.40				1160												RT. EDGE LINE	
	STA	90+30.50		TO	STA	100+06.46				976												RT. EDGE LINE	
	STA	89+90.10		TO	STA	90+14.50				80												ISLAND	
	STA	89+88.46		TO	STA	92+56.81				350									37			N. BOUND RT. TRN. LANE, ISLAND	
	STA	90+30.73		TO	STA	91+45.66				115									37			N. BOUND LT. TRN. LANE	
	STA	77+39.46		TO	STA	89+21.50					4499									60		MEDIAN & LT. TRN. LANE	
	STA	89+88.46		TO	STA	100+06.46					3757									52		MEDIAN & LT. TRN. LANE	
	STA	89+37.50		TO	STA	89+63.09													60			ISLAND	
	STA	89+89.70		TO	STA	90+23.78													94			ISLAND	
	STA	89+32.46		TO	STA	89+64.46													66			ISLAND	
	STA	89+90.05		TO	STA	90+14.50													50			ISLAND	
	STA	77+39.46		TO	STA	87+06.46					306											MEDIAN	
	STA	91+46.46		TO	STA	100+06.46					220											MEDIAN	
	STA	100+06.46		TO	STA	143+67.40				8722			1091							55	55		
GAP S. N. 100-0069 STA. 143+67.40 TO STA. 145+60.80																							
	STA	145+60.80		TO	STA	161+51.81				3183			398							20	20		
	STA	161+51.81		TO	STA	173+74.31				2445			306	1223						16	16		
	STA	173+74.31		TO	STA	180+22.87				1298				1298						9	9		
	STA	180+22.87		TO	STA	189+22.52				1800	900	225								12	12		
	STA	189+22.52		TO	STA	242+86.00				10727			1341							68	68		
GAP S. N. 100-0074 STA. 242+86.00 TO STA. 244+51.00																							
	STA	244+51.00		TO	STA	286+97.10				8493			1062							54	54		
EO.	STA	286+97.10	BK	TO	STA	287+01.20	AH																
	STA	287+01.20		TO	STA	312+57.00				5112			639							32	32		
GAP S. N. 100-0036 STA. 312+57.00 TO STA. 313+55.00																							
SUBTOTAL										63881			796		0		148		379		267		

MODEL: Default
 FILE: \\mlls01\B&E\BID\NTEC\Illinois\pov\RW\DOT\Documents\1007\Projects\78593\CADD\Drawings\DOT\78593_Sched.dwg

USER NAME = rollavr	DESIGNED -	REVISED -
	DRAWN -	REVISED -
PLOT SCALE = 120,0000' / in.	CHECKED -	REVISED -
PLOT DATE = 10/25/2017	DATE -	REVISED -

**STATE OF ILLINOIS
DEPARTMENT OF TRANSPORTATION**

PAVEMENT MARKING SCHEDULE				
SCALE:	SHEET	OF	SHEETS	STA. TO STA.

F.A.P. RTE.	SECTION	COUNTY	TOTAL SHEETS	SHEET NO.
726	130(RS-5,SR-1)	WILLIAMSON	33	20
CONTRACT NO. 78592				
ILLINOIS FED. AID PROJECT				

PAVEMENT MARKING SCHEDULE CONT.

LOCATION STATION TO STATION	MODIFIED URETHANE PAVEMENT MARKING								RAISED REFL PAVEMENT MARKER	RAISED REFL PAVEMENT MARKER REMOVAL	NOTES			
	LINE - 4" WHITE	LINE - 4" YELLOW				LINE - 12" YELLOW	LINE - 12" WHITE	LINE - 24" WHITE				LETTERS AND SYMBOLS		
	SOLID	SOLID LT	SKIP - DASH	SOLID RT	DOUBLE SOLID	SOLID	SOLID	SOLID				WHITE		
	FOOT	FOOT	FOOT	FOOT	FOOT	FOOT	FOOT	FOOT				SQ FT		
IL 148														
STA 313+55.00	TO	STA 321+05.00				1500		188			10	10		
STA 321+05.00	TO	STA 332+45.52				2282		286	1141		15	15		
STA 332+45.52	TO	STA 351+04.01				3717			3717		24	24		
STA 351+04.01	TO	STA 361+91.63				2176	1088	272			14	14		
STA 361+91.63	TO	STA 364+04.38				426		54			3	3		
GAP S. N. 100-0037 STA. 364+04.38 TO STA. 365+03.63														
STA 365+03.63	TO	STA 426+65.25				12324		1541			78	78		
GAP S. N. 100-0038 STA. 426+65.25 TO STA. 428+38.75														
STA 428+38.75	TO	STA 460+64.20				6451		807			41	41		
STA 460+64.20	TO	STA 461+98.48				269		34	135		2	2		
EQ. STA 461+98.48	BK TO	STA 0+00.00	AH			915		115	458		6	6		
STA 0+00.00	TO	STA 4+57.10				1884			1884		12	12		
STA 4+57.10	TO	STA 13+98.88												
EQ. STA 13+98.88	BK TO	STA 13+25.87	AH											
STA 13+25.87	TO	STA 20+50.57				1450			1450		10	10		
PIGEON CREEK RD.														
STA 9+00.00	TO	STA 9+64.00				102							LT. EDGE LINE	
STA 9+00.00	TO	STA 9+64.00				85							RT. EDGE LINE	
STA 9+00.00	TO	STA 9+60.00						15						
STA 9+55.00										12			STOP BAR	
STA 9+57.22	TO	STA 9+72.38								18			STOP BAR	
VISITOR'S CENTER ENTRANCE														
STA 10+15.96	TO	STA 10+31.11								18			STOP BAR	
STA 10+33.50										12			STOP BAR	
STA 10+33.50	TO	STA 10+76.50						11						
PATCHING														
STA VARIOUS	TO	STA VARIOUS				104			100		21		IL 148 & OLD IL 13 INTERSECTION	
SUBTOTAL						46981				0	60	21	215	215
TOTAL						110862				796	60	169	594	482

MODEL: Default
 FILE: \\s:\p\110862\BIDD\NTEC\Illinois\p\110862\DOT\Documents\DOT_Offices\Director\9\Projects\78592\CADD\Drawings\78592_Sht.dwg

USER NAME = rollavr	DESIGNED -	REVISED -	
	DRAWN -	REVISED -	
PLOT SCALE = 120,0000' / in.	CHECKED -	REVISED -	
PLOT DATE = 10/25/2017	DATE -	REVISED -	

**STATE OF ILLINOIS
DEPARTMENT OF TRANSPORTATION**

PAVEMENT MARKING SCHEDULE CONT.

SCALE: SHEET OF SHEETS STA. TO STA.

F.A.P. RTE.	SECTION	COUNTY	TOTAL SHEETS	SHEET NO.
726	130(RS-5,SR-1)	WILLIAMSON	33	21
CONTRACT NO. 78592				
ILLINOIS FED. AID PROJECT				

TEMPORARY PAVEMENT MARKING SCHEDULE CONT.

LOCATION STATION TO STATION										TEMPORARY PAVEMENT MARKING								TEMP PAVEMENT MARKING REMOVAL SQ FT	SHORT TERM PAVEMENT MARKING FOOT	SHORT TERM PAVEMENT MARKING REMOVAL SQ FT			
										LINE - 4" WHITE	LINE - 4" YELLOW				LINE - 12" YELLOW	LINE - 12" WHITE	LINE - 24" WHITE				LETTERS AND SYMBOLS		
										SOLID	SOLID LT	SKIP - DASH	SOLID RT	DOUBLE SOLID	SOLID	SOLID	SOLID				WHITE		
										FOOT	FOOT	FOOT	FOOT	FOOT	FOOT	FOOT	FOOT				SO FT		
IL 148																							
	STA	313+55.00		TO	STA	321+05.00				1500										563	225	75	
	STA	321+05.00		TO	STA	332+45.52				2282			1141							1237	345	115	
	STA	332+45.52		TO	STA	351+04.01				3717					3717					2478	558	186	
	STA	351+04.01		TO	STA	361+91.63				2176	1088									1179	327	109	
	STA	361+91.63		TO	STA	364+04.38				426										160	66	22	
GAP S. N. 100-0037 STA. 364+04.38 TO STA. 365+03.63																							
	STA	365+03.63		TO	STA	426+65.25				12324										4622	1851	617	
GAP S. N. 100-0038 STA. 426+65.25 TO STA. 428+38.75																							
	STA	428+38.75		TO	STA	460+64.20				6451										2420	969	323	
		460+64.20				461+98.48				269			135							146	42	14	
EQ.	STA	461+98.48	BK	TO	STA	0+00.00	AH																
	STA	0+00.00		TO	STA	4+57.10				915			458							496	138	46	
	STA	4+57.10		TO	STA	13+98.88				1884				1884						1256	285	95	
EQ.	STA	13+98.88	BK	TO	STA	13+25.87	AH																
	STA	13+25.87		TO	STA	20+50.57				1450				1450						967	219	73	
PIGEON CREEK RD.																							
	STA	9+00.00		TO	STA	9+64.00				102										34			
	STA	9+00.00		TO	STA	9+64.00				85										29			
	STA	9+00.00		TO	STA	9+60.00							15							5	18	6	
	STA	9+55.00																		24			
	STA	9+57.22		TO		9+72.38														36			
VISITOR'S CENTER ENTRANCE																							
	STA	10+15.96		TO	STA	10+31.11														18			
	STA	10+33.50																		12			
	STA	10+33.50		TO	STA	10+76.50							11								15	5	
SUBTOTAL																							
										46777				0						15712	5058	1686	
TOTAL																							
										110658				796						37940	12660	4220	

MODEL: Default
 FILE: \\nas0101\B&E\BID\ITEC\Illinois\pov\RW\DOT\Documents\DOT_Offices\Director_9\Projects\78592\CADDData\CAD\pkcs078592_Sht.dgn

USER NAME = rollavr	DESIGNED -	REVISED -
	DRAWN -	REVISED -
PLOT SCALE = 120,0000' / in.	CHECKED -	REVISED -
PLOT DATE = 10/25/2017	DATE -	REVISED -

**STATE OF ILLINOIS
DEPARTMENT OF TRANSPORTATION**

TEMPORARY PAVEMENT MARKING SCHEDULE CONT.

SCALE: SHEET OF SHEETS STA. TO STA.

F.A.P. RTE.	SECTION	COUNTY	TOTAL SHEETS	SHEET NO.
726	130(RS-5,SR-1)	WILLIAMSON	33	23
CONTRACT NO. 78592				
ILLINOIS FED. AID PROJECT				

GUARDRAIL SCHEDULE

LOCATION STA TO STA	STEEL PLATE BEAM GUARDRAIL TYPE A, 9 FOOT POSTS	STRONG POST GUARDRAIL ATTACHED TO CULVERT	NON- BLOCKED STEEL PLATE BEAM GUARDRAIL	GUARDRAIL REFLECTORS, TYPE A	CONCRETE REMOVAL	GUARDRAIL REMOVAL	VERTICAL ADJUSTMENT OF GUARDRAIL	TRAFFIC BARRIER TERMINAL, TYPE 6	TRAFFIC BARRIER TERMINAL, TYPE 6A	CONCRETE CURB, TYPE B	PROT. COAT	TRAFFIC BARRIER TERMINAL, TYPE 2	TRAFFIC BARRIER TERMINAL, TYPE 1, (SPECIAL) TANGENT, 31 7/8"	TERMINAL MARKER - DIRECT APPLIED	STEEL RAILING, TYPE 2399	NAME PLATES	COMMENTS
	FOOT	FOOT	FOOT	EACH	CU YD	FOOT	FOOT	EACH	EACH	FOOT	SO YD	EACH	EACH	EACH	FOOT	EACH	
IL 148 (WILLIAMSON COUNTY)																	
RT STA 36+37 TO STA 33+93 SN 100-7041	112.5	25		4		244							2	2			
LT STA 35+74 TO STA 34+18 SN 100-7041	25.0	25		2		144							2	2			
RT STA 158+68 TO STA 145+41 SN 100-0069	1237.5			12		1324		1					1	1			SOUTHBOUND APPROACH
RT STA 143+87 TO STA 124+10 SN 100-0069	1887.5			13		1972		1					1	1			SOUTHBOUND DEPARTURE
LT STA 164+68 TO STA 145+41 SN 100-0069	1837.5			13		1923		1					1	1			NORTHBOUND APPROACH
LT STA 143+87 TO STA 130+97 SN 100-0069	1200.0			12		1285		1					1	1			NORTHBOUND DEPARTURE
RT STA 240+82 TO STA 241+89 OGDEN RD				2			119										SOUTHBOUND APPROACH / OGDEN RD
RT STA 242+33 TO STA 243+16 SN 100-0074				2			99										SOUTHBOUND APPROACH / OGDEN RD
RT STA 244+21 TO STA 245+67 SN 100-0074				2			146										SOUTHBOUND DEPARTURE
LT STA 244+21 TO STA 246+51 SN 100-0074				3			230										NORTHBOUND APPROACH
LT STA 243+16 TO STA 242+39 SN 100-0074			25	1			62					1					RADIUS REPAIR / NORTHBOUND DEPART. / OGDEN RD
RT STA 310+62 TO STA 312+87 SN 100-0036				3			225										SOUTHBOUND APPROACH
RT STA 313+25 TO STA 314+75 SN 100-0036				2			150										SOUTHBOUND DEPARTURE
LT STA 315+50 TO STA 313+25 SN 100-0036				3			225										NORTHBOUND APPROACH
LT STA 312+87 TO STA 311+37 SN 100-0036				2			100						1	1			NORTHBOUND DEPARTURE
RT STA 337+54 TO STA 344+72 LITTLE GRASSY RD	612.5			5		708							2	2			
RT STA 361+76 TO STA 364+04 SN 100-0037	137.5			3	3	247			1	16	2		1	1	99.25	1	SOUTHBOUND APPROACH / REMOVE EXIST. CONC. HANDRAIL
RT STA 365+04 TO STA 365+94 SN 100-0037				2		91			1	16	2		1	1			SOUTHBOUND DEPARTURE
LT STA 367+57 TO STA 365+04 SN 100-0037	162.5			4	3	268			1	16	2		1	1	99.25	1	NORTHBOUND APPROACH / REMOVE EXIST. CONC. HANDRAIL
LT STA 364+04 TO STA 363+14 SN 100-0037				2		91			1	16	2		1	1			NORTHBOUND DEPARTURE
RT STA 17+07 TO STA 20+51 SN 100-0039				5			344										SOUTHBOUND APPROACH
LT STA 20+51 TO STA 16+41 SN 100-0039				6			410										NORTHBOUND DEPARTURE
IL 148 TOTALS	7212.5	50	25	103	6	8297	2110	4	4	64	8	1	15	15	198.5	2	

MODEL: Default
 FILE: \\s:\p\1108\B&E\BID\ITEC\Illinois\poc\p\1108\Documents\1108 DOT Office\1108\1108.dwg
 PROJECT: 1108\1108.dwg
 DATE: 10/20/2017

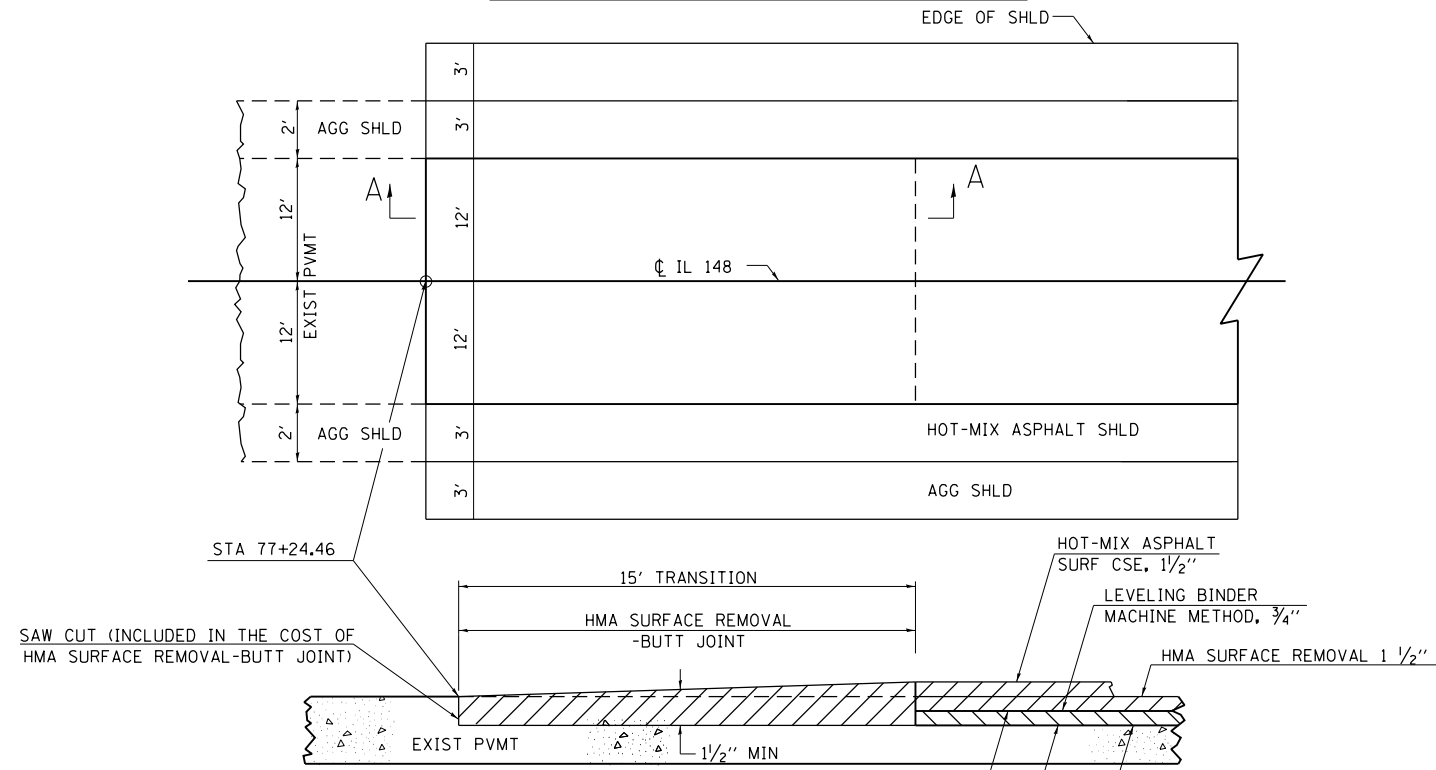
USER NAME = kirbyea	DESIGNED -	REVISED -
	DRAWN -	REVISED -
PLOT SCALE = 1/20,000' / in.	CHECKED -	REVISED -
PLOT DATE = 10/20/2017	DATE -	REVISED -

**STATE OF ILLINOIS
DEPARTMENT OF TRANSPORTATION**

GUARDRAIL SCHEDULE	
SCALE:	SHEET OF SHEETS STA. TO STA.

F.A.P. RTE.	SECTION	COUNTY	TOTAL SHEETS	SHEET NO.
726	130(RS-5,SR-1)	WILLIAMSON	33	25
CONTRACT NO. 78592				
ILLINOIS FED. AID PROJECT				

BUTT JOINT WITH MILLING

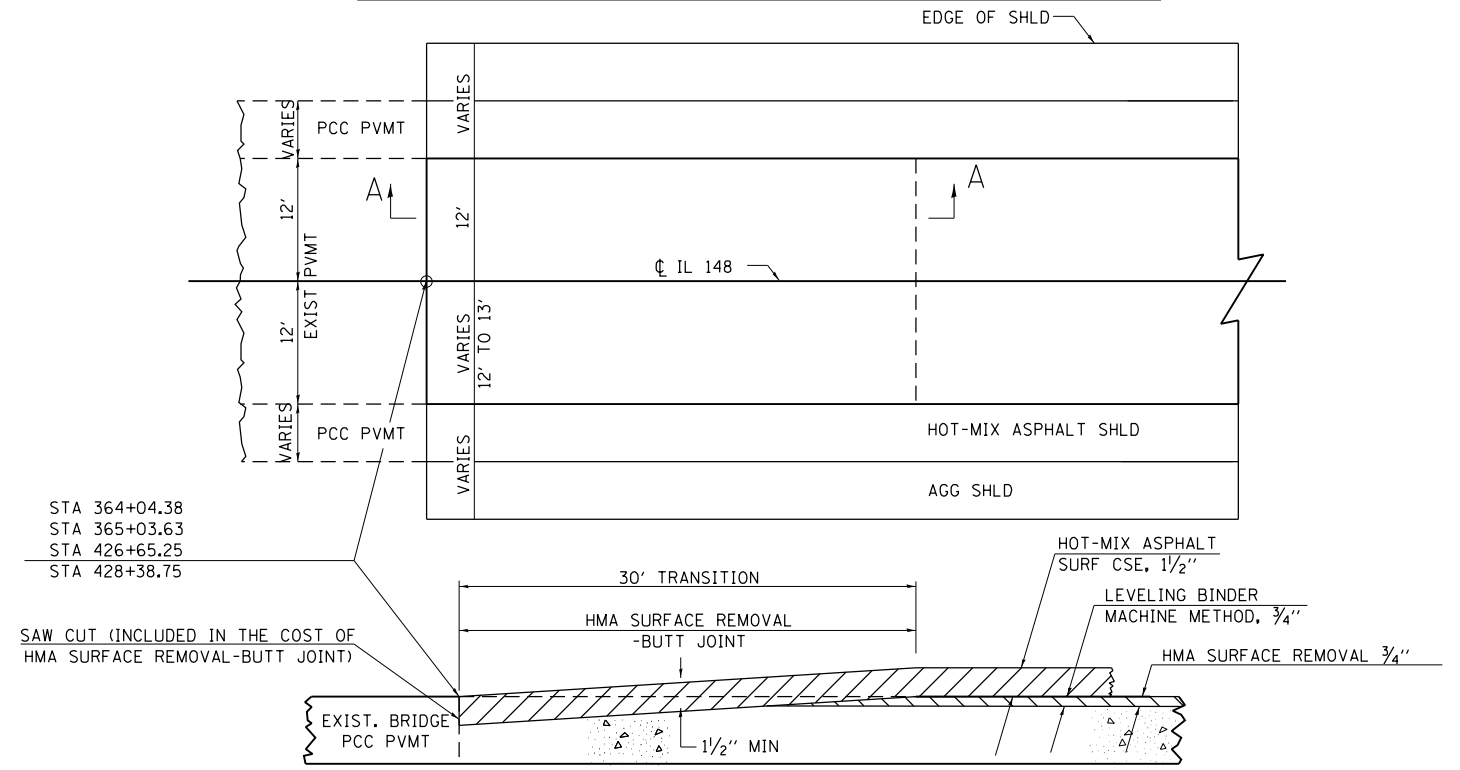


SECTION A-A

REVISIONS	
DRAWN	03-09-17
REVISED	
REVISED	
REVISED	

STD. 9-118

BUTT JOINT WITH MILLING AT BRIDGES

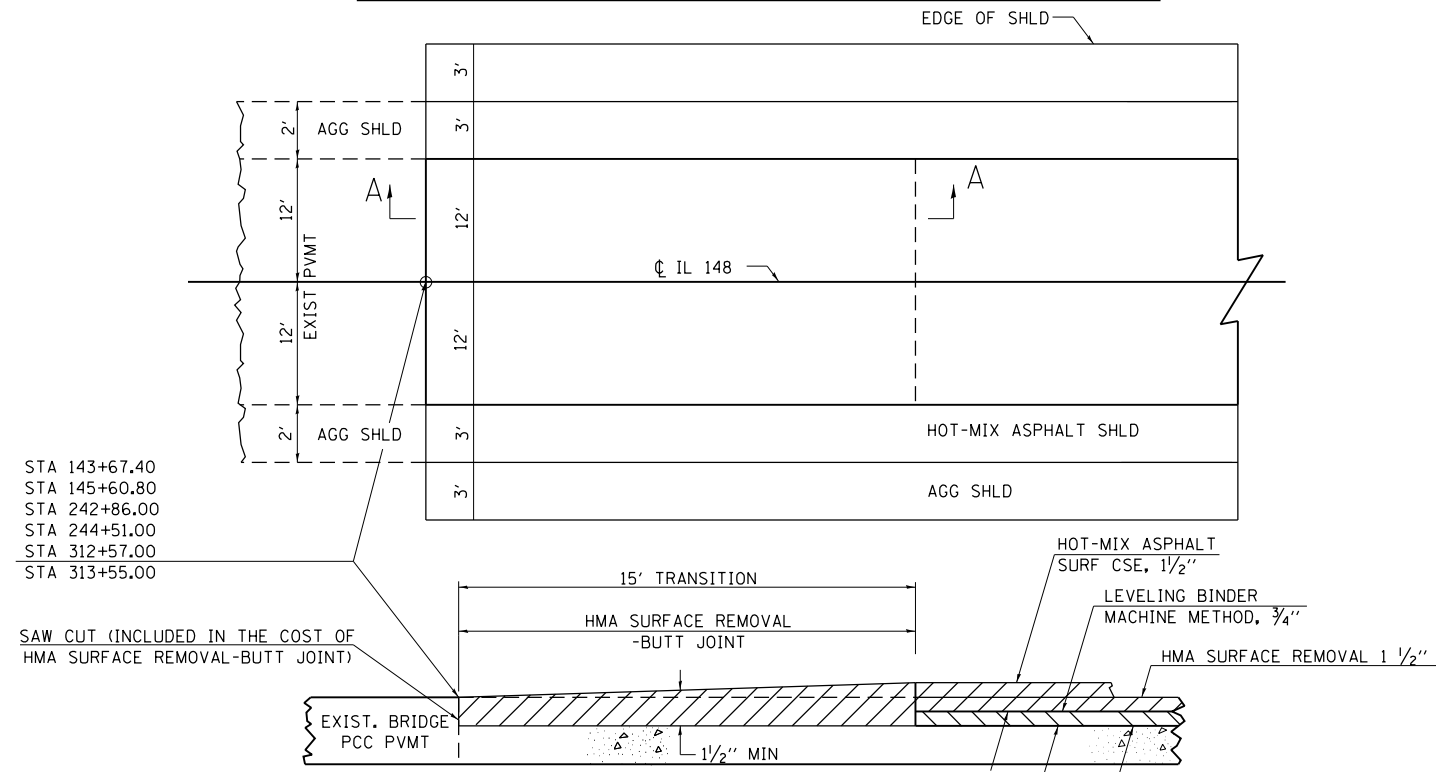


SECTION A-A

REVISIONS	
DRAWN	03-09-17
REVISED	
REVISED	
REVISED	

STD. 9-118

BUTT JOINT WITH MILLING AT BRIDGES

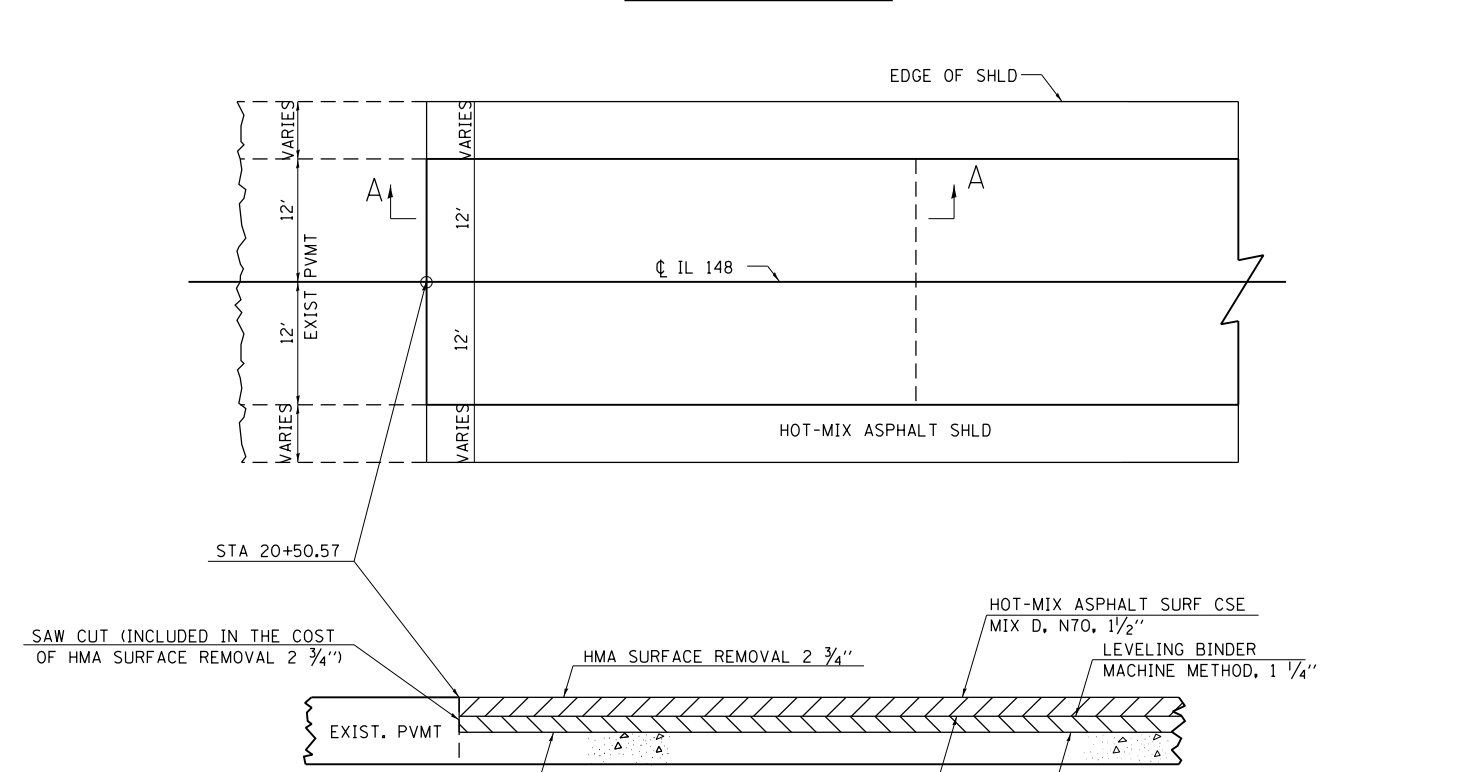


SECTION A-A

REVISIONS	
DRAWN	03-09-17
REVISED	
REVISED	
REVISED	

STD. 9-118

INLAY DETAIL



SECTION A-A

MODEL: Default
 FILE: \\hpc\p\ul\B&E\BID\NTEC\Illinois.gov\FWIDOT\Documents\BID\Office\BID\BID\9\Projects\78592\CADDData\CAD\Sheet\0778592_Sht.dgn

STA 143+67.40
 STA 145+60.80
 STA 242+86.00
 STA 244+51.00
 STA 312+57.00
 STA 313+55.00

STA 20+50.57

USER NAME = kirbyea	DESIGNED -	REVISED -
	DRAWN -	REVISED -
PLOT SCALE = 100.0000' / in.	CHECKED -	REVISED -
PLOT DATE = 10/20/2017	DATE -	REVISED -

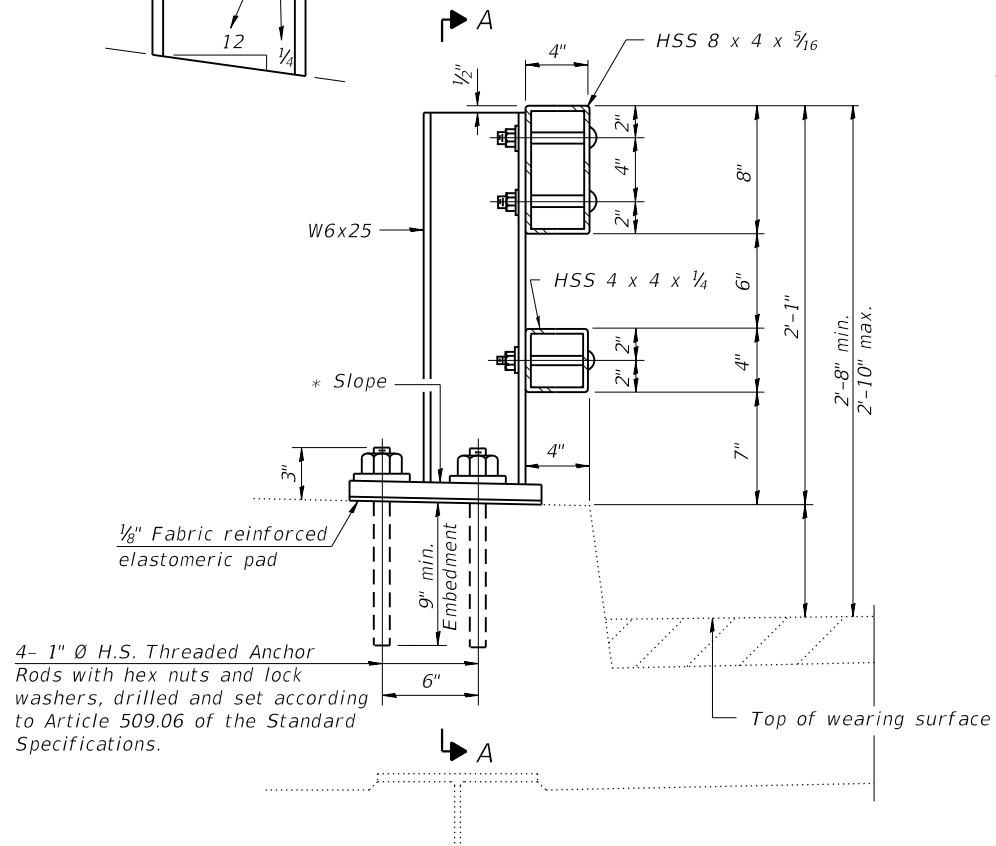
STATE OF ILLINOIS
DEPARTMENT OF TRANSPORTATION

BUTT JOINT AND INLAY DETAIL

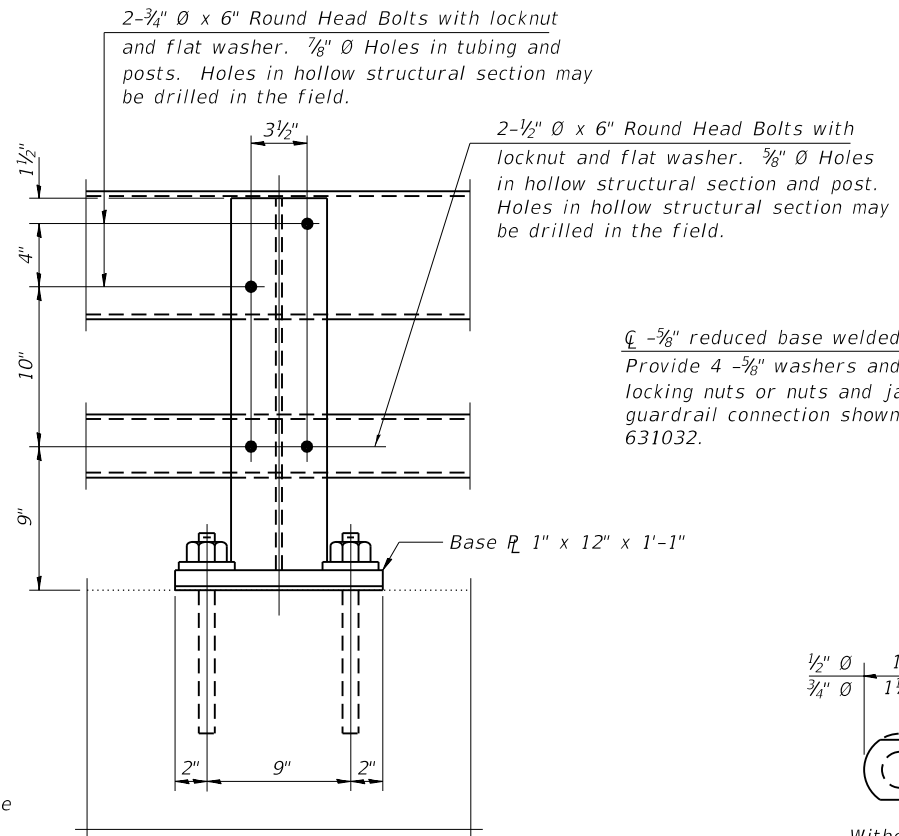
SCALE: SHEET OF SHEETS STA. TO STA.

F.A.P. RTE.	SECTION	COUNTY	TOTAL SHEETS	SHEET NO.
726	130(RS-5,SR-1)	WILLIAMSON	33	27
CONTRACT NO. 78592				
ILLINOIS FED. AID PROJECT				

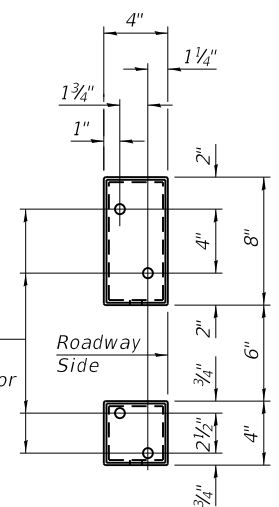
* Cut bottom end of post to curb slope.



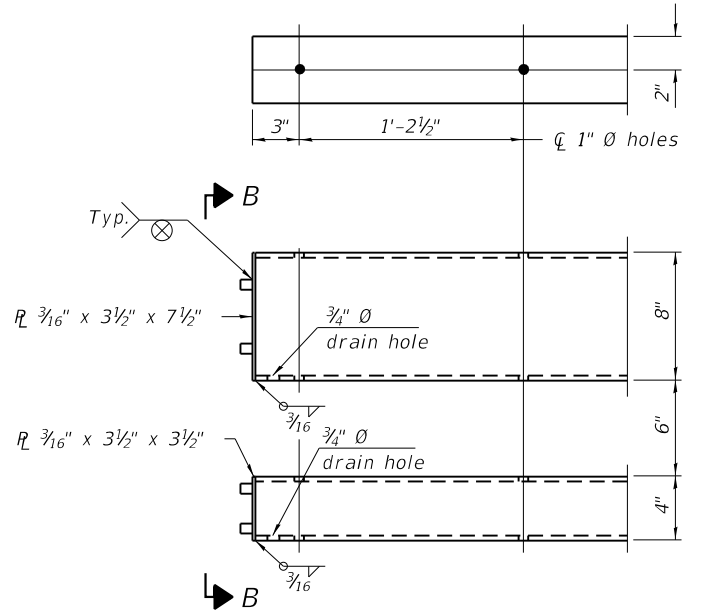
SECTION AT RAIL POST



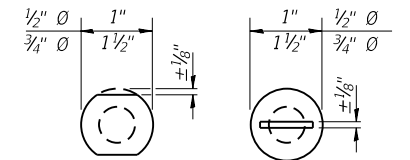
SECTION A-A



VIEW B-B

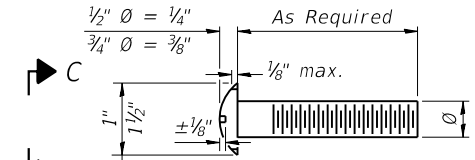


END OF RAIL DETAILS

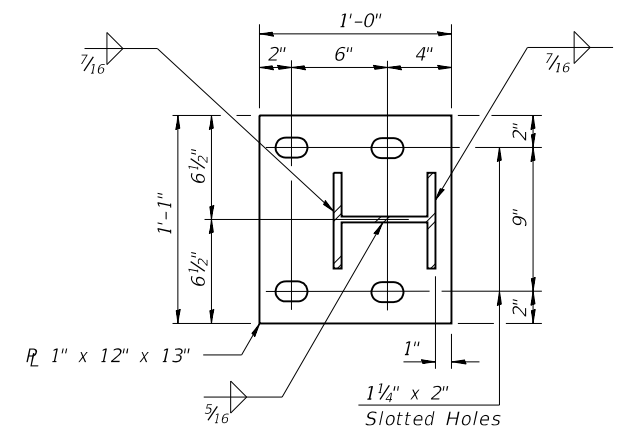


Without Slot or Recess With Slot (shown) or Approved Recess

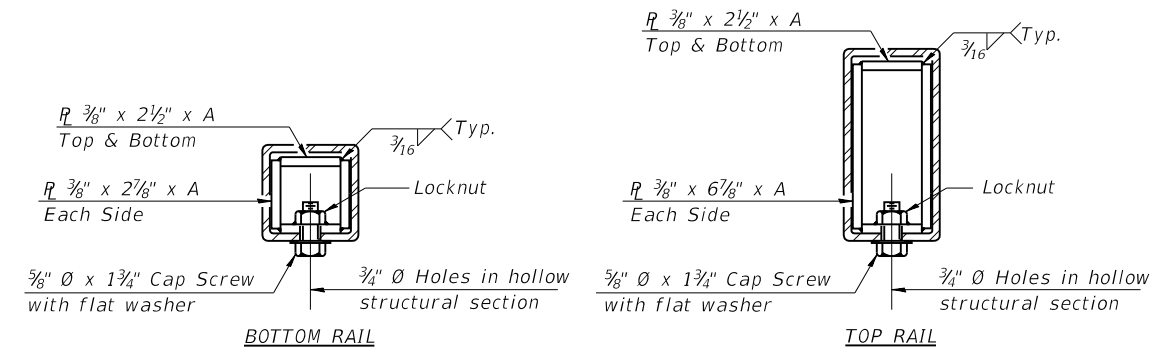
VIEW C-C



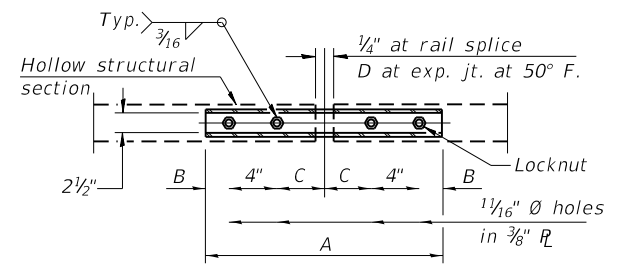
DETAIL OF 1/2" Ø & 3/4" Ø ROUND HEAD BOLTS



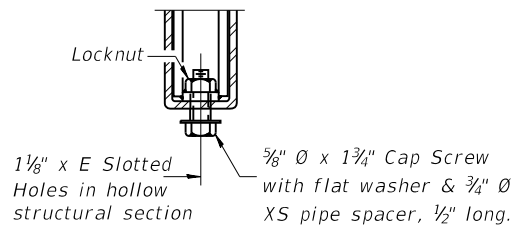
BASE PLATE DETAIL



SECTIONS AT RAIL SPLICE



PLAN-BOTT. SPLICE R TYPICAL



RAIL SPLICE CONNECTION AT EXPANSION JT.

Notes:
 Posts shall not be located closer than 1'-3" to an existing bridge expansion joint or end of bridge.
 Steel Bridge Rail expansion joint shall be provided between any two (2) posts which span a bridge expansion joint. Bolts located at expansion joint shall be provided with locknuts and shall be tightened only to a point that will allow railing movement.
 Provide one 1/8" and two 1/16" steel shims for 25% of the posts. Shims shall be similar to base plates in size and holes.
 All steel rail elements shall be galvanized according to Article 509.05 of the Standard Specifications.

SPLICE DIMENSIONS

T	D	A	B	C	E
≤ 4"	2 1/2"	1'-8"	2"	4"	2 1/2"
> 4" ≤ 6 1/2"	3 3/4"	2'-0"	2 1/2"	5 1/2"	3 1/2"
> 6 1/2" ≤ 9"	5"	2'-4"	3 1/2"	6 1/2"	9"
> 9" ≤ 13"	7"	2'-10"	4 1/2"	8 1/2"	11"
Rail Splice	1/2"	1'-8"	2"	4"	—

T = Total movement at expansion joint as shown on the design plans.

BILL OF MATERIAL

Item	Unit	Quantity
Steel Railing, Type 2399	Foot	198.5

R-31

8-11-2017

(6'-3" Maximum Post Spacing)

USER NAME = kirbyea	DESIGNED -	REVISD -
PLOT SCALE = 100,0000' / in.	DRAWN -	REVISD -
PLOT DATE = 10/20/2017	CHECKED -	REVISD -
	DATE -	REVISD -

STATE OF ILLINOIS
 DEPARTMENT OF TRANSPORTATION

STEEL RAILING, TYPE 2399
 STRUCTURE NO. 100-0037

SCALE: SHEET OF SHEETS STA. TO STA.

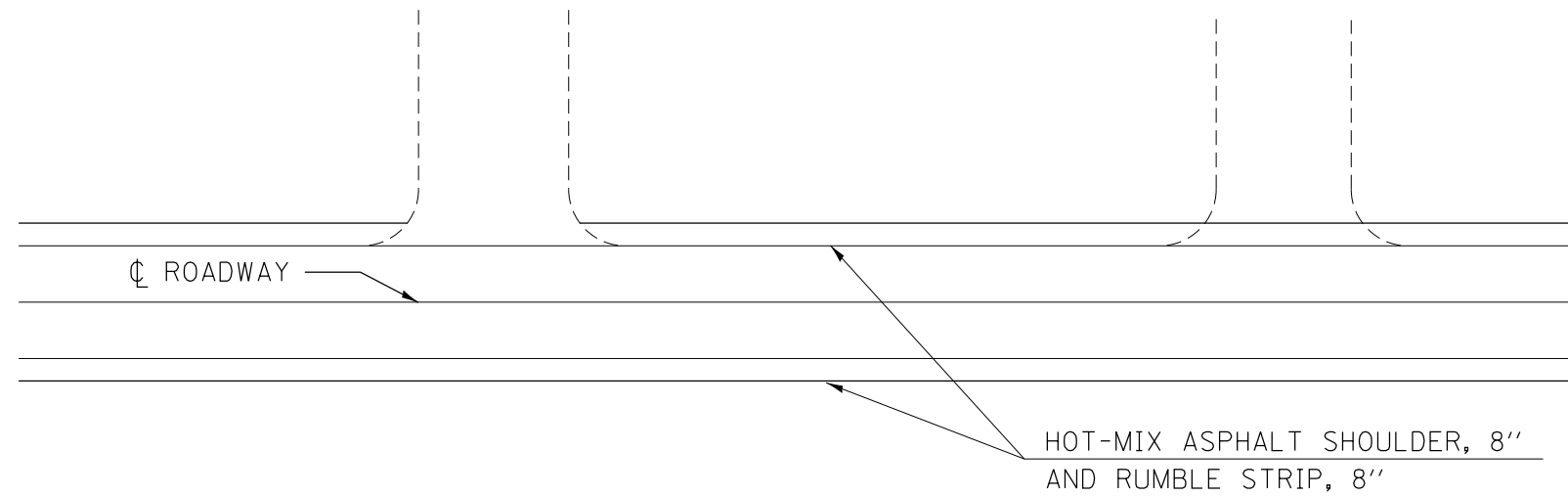
F.A.P. RTE. 726	SECTION 130(RS-5,SR-1)	COUNTY WILLIAMSON	TOTAL SHEETS 33	SHEET NO. 29
ILLINOIS FED. AID PROJECT			CONTRACT NO. 78592	

MODEL: Default
 FILE: \\snp\p\1108\EBID\NTEC\Illinois\pov\p\1108\EBID\NTEC\Documents\DOT Office\Drawings\9 Proj\CS178592\CaddData\CAD\papers\078592_Sht.dgn

SHOULDERS ONLY: SIDEROAD AND ENTRANCE DETAIL

CONCRETE ENTRANCES & SIDE ROADS
OR HMA SIDEROADS

AGGREGATE ENTRANCES AND SIDE ROADS
OR HMA ENTRANCES



TO BE USED:

STA. 38+62.98 TO STA. 11+30.71
STA. 57+92.70 TO STA. 77+24.46

GENERAL NOTES

1. CONSTRUCT HOT-MIX ASPAHLT SHOULDER THROUGH AGGREGATE ENTRANCE AND SIDE ROADS, AND HMA ENTRANCES. IF THE ENTRANCE OR SIDE ROAD IS CONCRETE OR IF THE SIDEROAD IS HMA, THEN PLACE SHOULDER UP TO EDGE OF THE ENTRANCE OR SIDE ROAD PAVEMENT.
2. THE MATERIAL THAT IS REMOVED TO PLACE THE SHOULDER SHALL BE HANDLED IN ACCORDANCE WITH ARTICLE 202.06.

MODEL: Default
FILE: \\nas101.pva\illinois\BID\NTEC\Illinois\gov\PI\DOT\Documents\DOT_Offices\Director\Projects\78592\Cadd\data\CAD\sheet\0778592_Sht.dgn

USER NAME = kirbyea	DESIGNED -	REVISED -
	DRAWN -	REVISED -
PLOT SCALE = 100.0000' / in.	CHECKED -	REVISED -
PLOT DATE = 10/20/2017	DATE -	REVISED -

STATE OF ILLINOIS
DEPARTMENT OF TRANSPORTATION

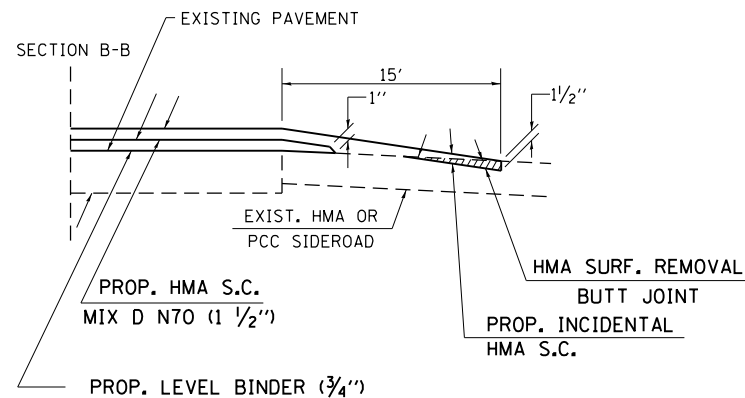
SHOULDERS ONLY:
SIDEROAD AND ENTRANCE DETAIL

SCALE: SHEET OF SHEETS STA. TO STA.

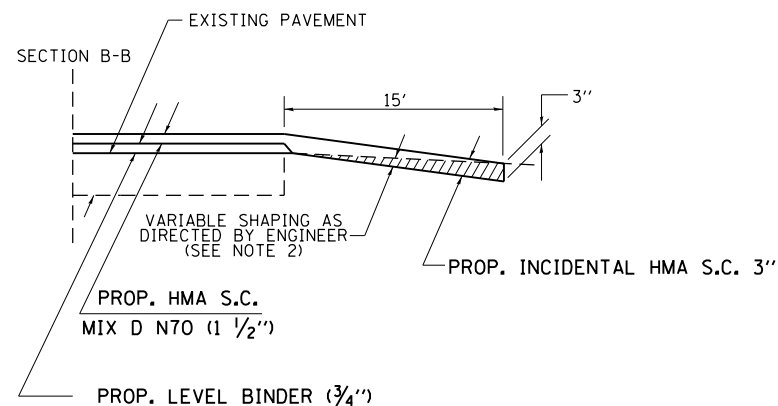
F.A.P. RTE.	SECTION	COUNTY	TOTAL SHEETS	SHEET NO.
726	130(RS-5,SR-1)	WILLIAMSON	33	30
CONTRACT NO. 78592				
ILLINOIS FED. AID PROJECT				

OVERLAY: SIDEROAD AND ENTRANCE (3P PROJECT)

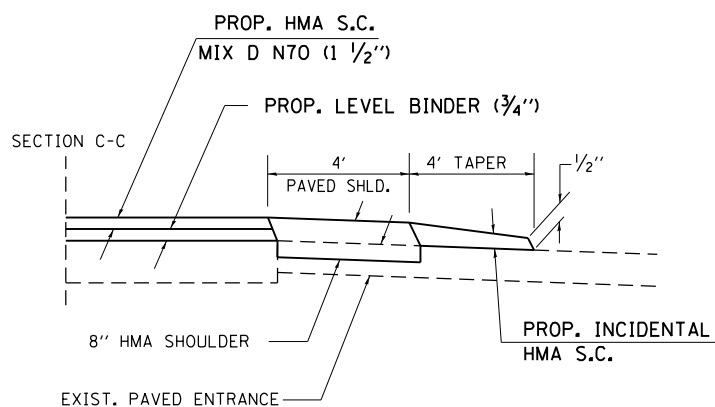
**EX. HMA OR PCC SIDEROADS
WITH BUTT JOINT**



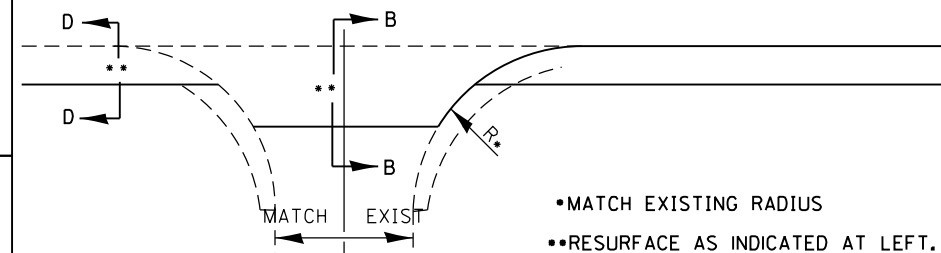
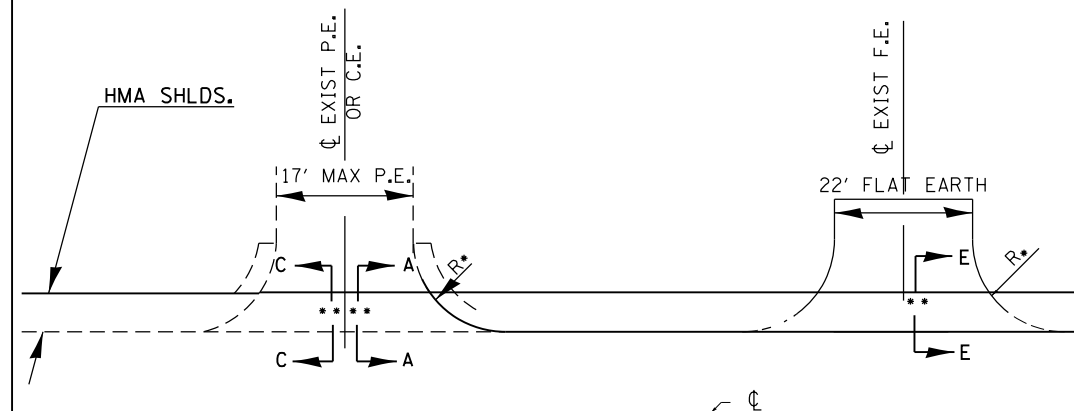
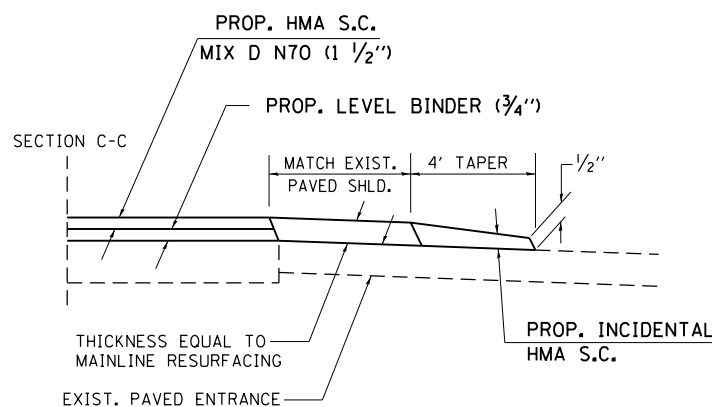
EX. AGGREGATE SIDEROAD



**HMA, OR OIL & CHIP PRIVATE OR
COMMERCIAL ENTRANCE (HMA SHLD.)**



**PCC PRIVATE OR
COMMERCIAL ENTRANCE (HMA SHLD.)**



ENTRANCE SCHEDULE

TYPE	NUMBER OF ENTRANCES
P.E.	24
C.E.	7

TO BE USED:

STA. 77+24.46 TO STA. 15+00.00

STATION EQUATIONS

STA. 286+97.10 BK TO STA. 287+01.20 AH
 STA. 461+98.50 BK TO STA. 0+00.00 AH
 STA. 13+98.88 BK TO STA. 13+25.87 AH

NOTES

- IF EXISTING SUBBASE IS INADEQUATE, AS DETERMINED BY THE ENGINEER, THE SIDE ROADS SHALL BE CORED OUT AND AGGREGATE SUBBASE, TYPE B SHALL BE PLACED FOR BASE. THE COST OF CORING OUT THE SIDE ROAD AND ANY AGGREGATE BASE COURSE SHALL BE PAID FOR AS SPECIFIED IN ART. 109.04 OF THE STANDARD SPECIFICATIONS FOR ROAD AND BRIDGE CONSTRUCTION. IF EXISTING SUBBASE IS DETERMINED TO BE ADEQUATE, THE PREPARATION OF THE BASE SHALL BE CONSTRUCTED ACCORDING TO ARTICLE 406.09.
- VARIABLE SHAPING IS INCLUDED IN THE COST OF INCIDENTAL HOT-MIX ASPHALT SURFACE.

MODEL: Default
FILE: \\nas01\pub\illinois\dot\Documents\DOT Office\Director\9\Projects\78592\CADD\Drawings\9\78592_Sht.dwg

USER NAME = kirbyea	DESIGNED -	REVISED -
	DRAWN -	REVISED -
PLOT SCALE = 100.0000' / in.	CHECKED -	REVISED -
PLOT DATE = 10/20/2017	DATE -	REVISED -

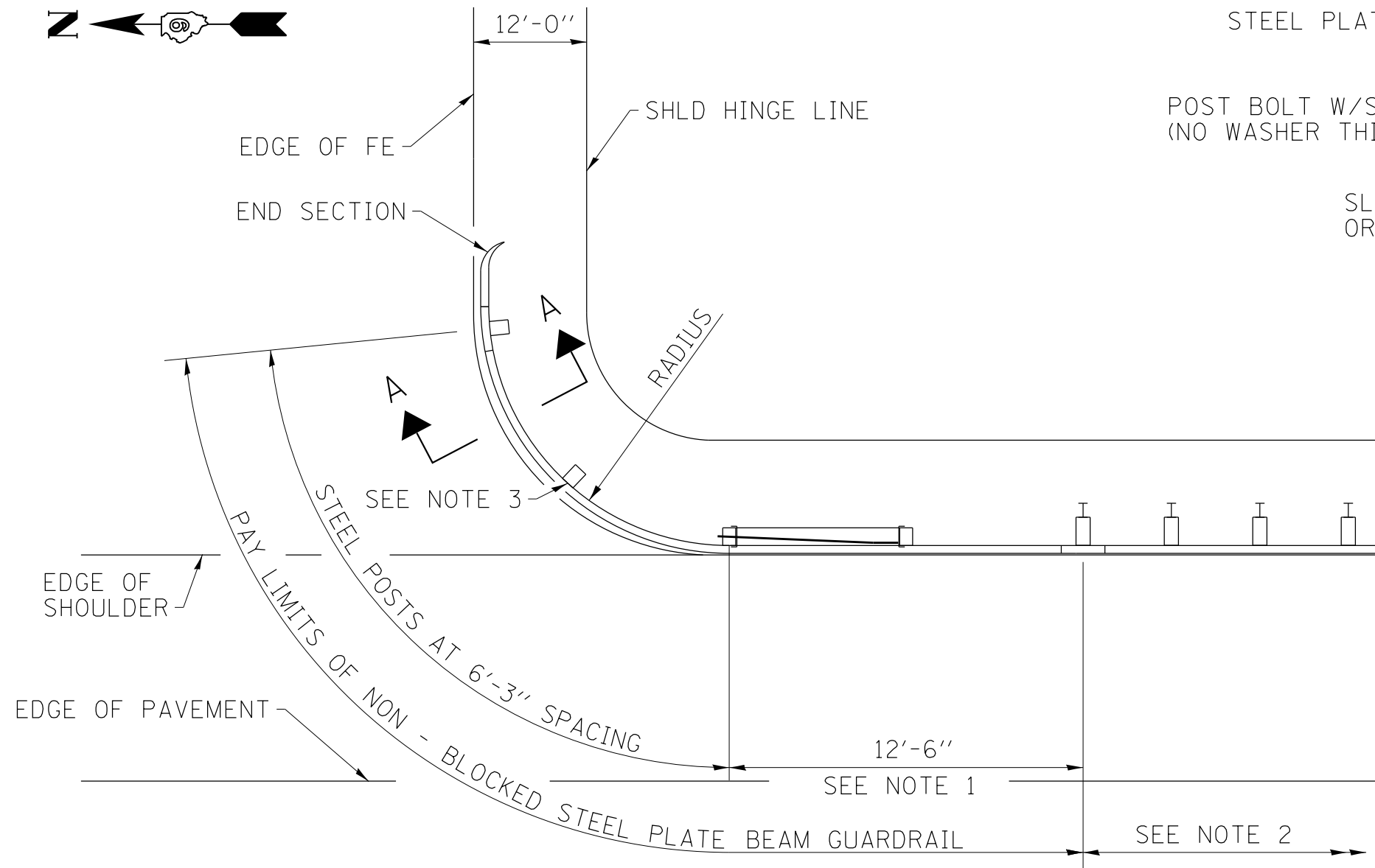
**STATE OF ILLINOIS
DEPARTMENT OF TRANSPORTATION**

OVERLAY: SIDEROAD AND ENTRANCE DETAIL

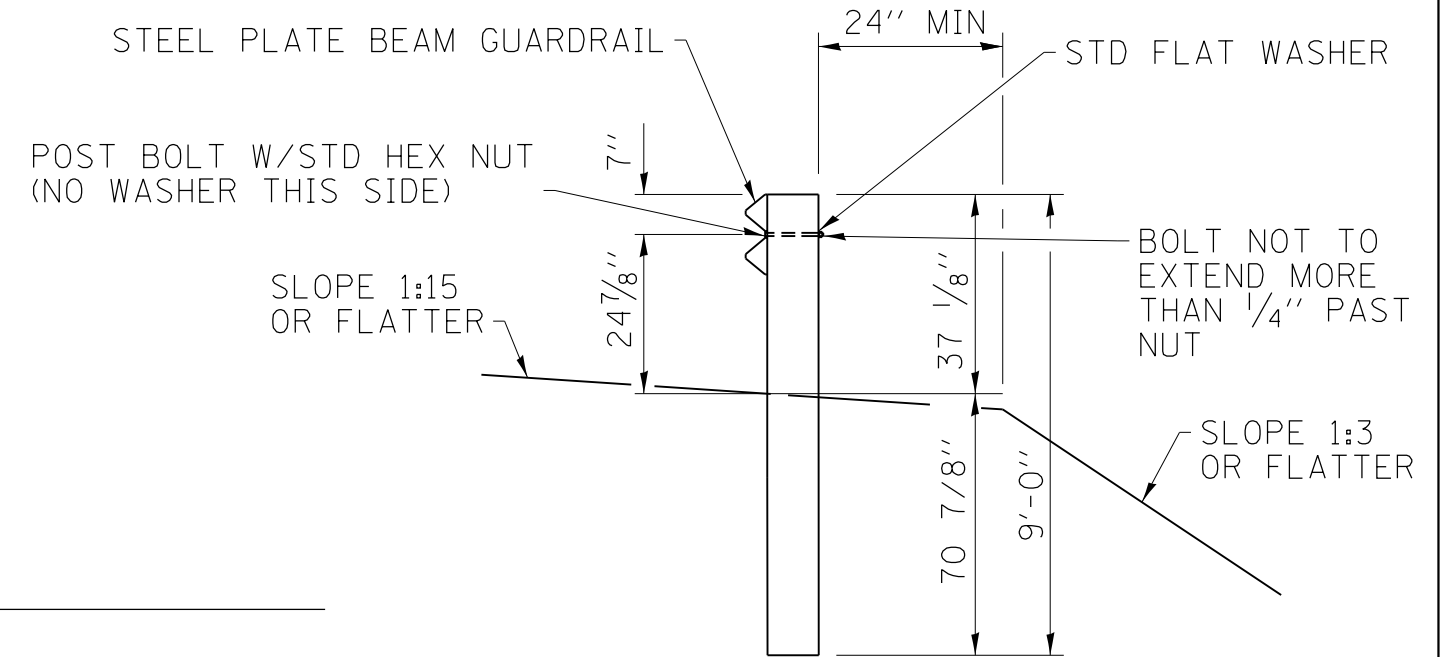
SCALE: SHEET OF SHEETS STA. TO STA.

F.A.P. RTE.	SECTION	COUNTY	TOTAL SHEETS	SHEET NO.
726	130(RS-5,SR-1)	WILLIAMSON	33	31
CONTRACT NO. 78592				
ILLINOIS FED. AID PROJECT				

SHORT RADIUS GUARDRAIL DETAIL



PLAN



SECTION A-A

NOTES

1. CONSTRUCT ACCORDING TO STANDARD 631011 FOR TRAFFIC BARRIER TERMINAL TYPE 2, EXCEPT DELETE END SECTION AND SPLICE INTO RADIUS GUARDRAIL.
2. STEEL PLATE BEAM GUARDRAIL TYPE A, OR TRAFFIC BARRIER TERMINAL AS SPECIFIED.
3. THE RAIL IS NOT BOLTED TO THE POST LOCATED AT THE MIDPOINT OF THE CURVE.

MODEL: Default
 FILE: \\nas0101\pub\illinois\dot\Documents\DOT_Offices\Director_9\Projects\78592\CaddData\CAD\papers\0778592_Sht.dgn

USER NAME = kirbyea	DESIGNED -	REVISED -
	DRAWN -	REVISED -
PLOT SCALE = 100.0000' / in.	CHECKED -	REVISED -
PLOT DATE = 10/20/2017	DATE -	REVISED -

**STATE OF ILLINOIS
DEPARTMENT OF TRANSPORTATION**

SHORT RADIUS GUARDRAIL DETAIL

SCALE: SHEET OF SHEETS STA. TO STA.

F.A.P. RTE.	SECTION	COUNTY	TOTAL SHEETS	SHEET NO.
726	130(RS-5,SR-1)	WILLIAMSON	33	32
CONTRACT NO. 78592				
ILLINOIS FED. AID PROJECT				

