

STATE OF ILLINOIS
DEPARTMENT OF TRANSPORTATION

F.A. RTE.	SECTION	COUNTY	TOTAL SHEETS	SHEET NO.
57		FRANKLIN	4	1

ILLINOIS CONTRACT NO. T8620
D9 TRANSFER SWITCH 2018

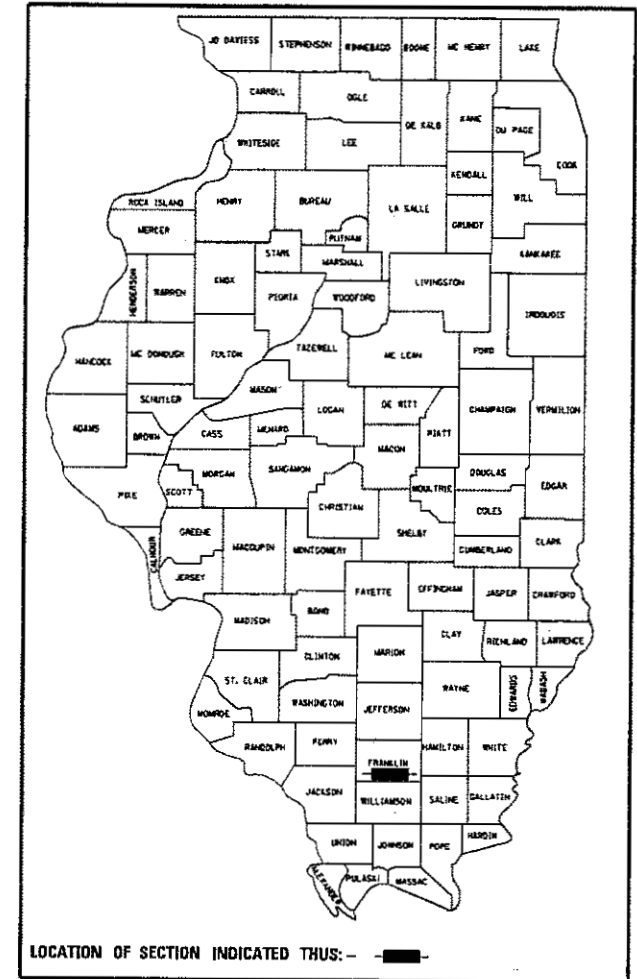
D-99-007-18

**PROPOSED
HIGHWAY PLANS**

I-57 (F.A.I. 57)
SECTION D9 TRANSFER SWITCH 2018
PUMP STATION AT I-57 AND IL RTE. 149
ELECTRICAL IMPROVEMENT
FRANKLIN COUNTY
C-99-014-18

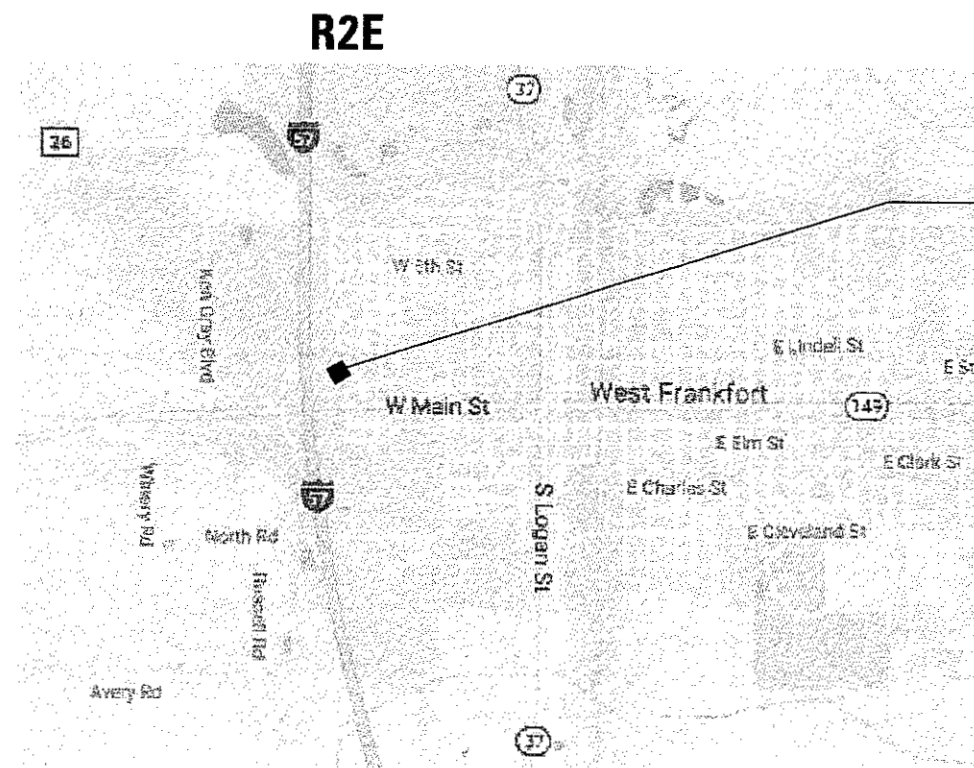
INDEX OF SHEETS:

- 1 COVER SHEET
- 2 GENERAL NOTES AND SUMMARY OF QUANTITIES
- 3 ONE-LINE DIAGRAM AND ELEVATION
- 4 FLOOR PLAN



TOWNSHIP

DENNING



PROJECT LOCATION



Michael Stohl
10-16-2017
EXPIRES: 11-30-2019

J.U.L.I.E
JOINT UTILITY LOCATION INFORMATION FOR EXCAVATION
1-800-892-0123
OR 811

PROJECT ENGINEER: DAVID PICHE - (618)351-5227
PROJECT DESIGNER: DAVID PICHE - (618)351-5227

STATE OF ILLINOIS
DEPARTMENT OF TRANSPORTATION

SUBMITTED Oct 20 20 17
Jeffrey R. Keenan
REGION FIVE ENGINEER

Nov 30 20 17
Maureen M. Addio, P.E.
ENGINEER OF DESIGN AND ENVIRONMENT

Nov 30 20 17
David A. ...
DIRECTOR OF PROGRAM DEVELOPMENT

DONOHUE LOCATION MAP

PRINTED BY THE AUTHORITY
OF THE STATE OF ILLINOIS

PUMP STATION GENERAL NOTES:

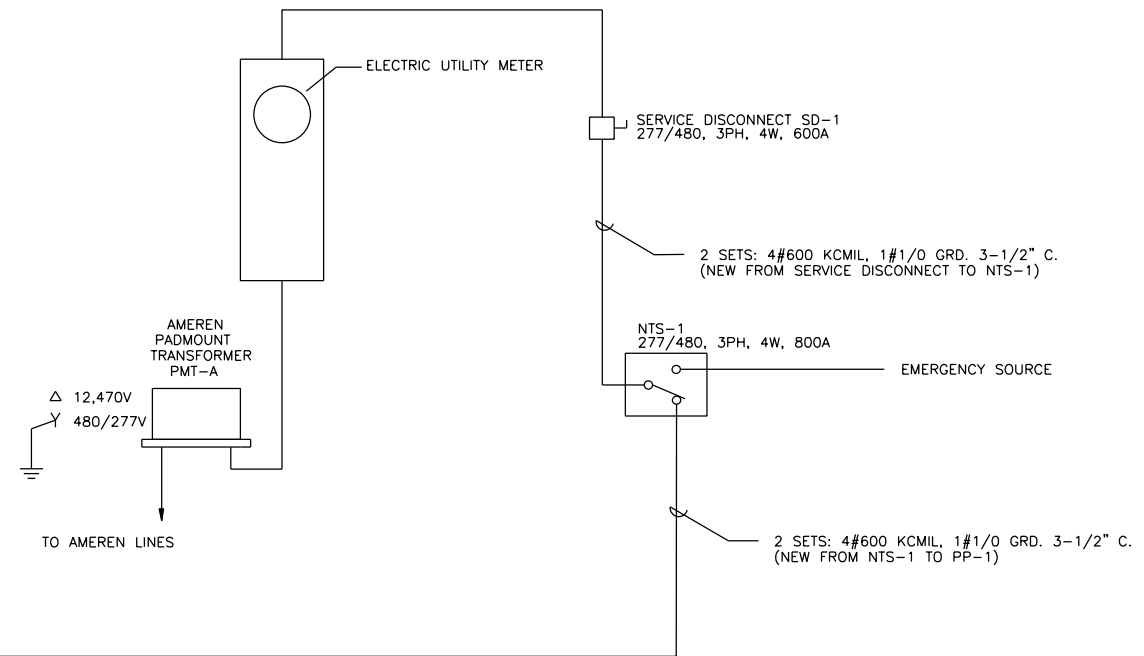
1. CONTRACTOR SHALL COORDINATE PRIOR TO ANY OUTAGES WITH ENGINEER.
2. THE CONTRACTOR SHALL SECURE ANY, LOCAL, STATE, COUNTY PERMITS NEEDED FOR THIS PROJECT.
3. PLAN DIMENSIONS AND DETAILS RELATIVE TO EXISTING STRUCTURES HAVE BEEN TAKEN FROM EXISTING PLANS AND ARE SUBJECT TO NOMINAL CONSTRUCTION VARIATIONS. IT SHALL BE THE RESPONSIBILITY TO VERIFY SUCH DIMENSIONS AND DETAILS IN THE FIELD, AND MAKE NECESSARY APPROVED ADJUSTMENTS PRIOR TO CONSTRUCTION OR ORDERING MATERIALS.

100 %
STATE

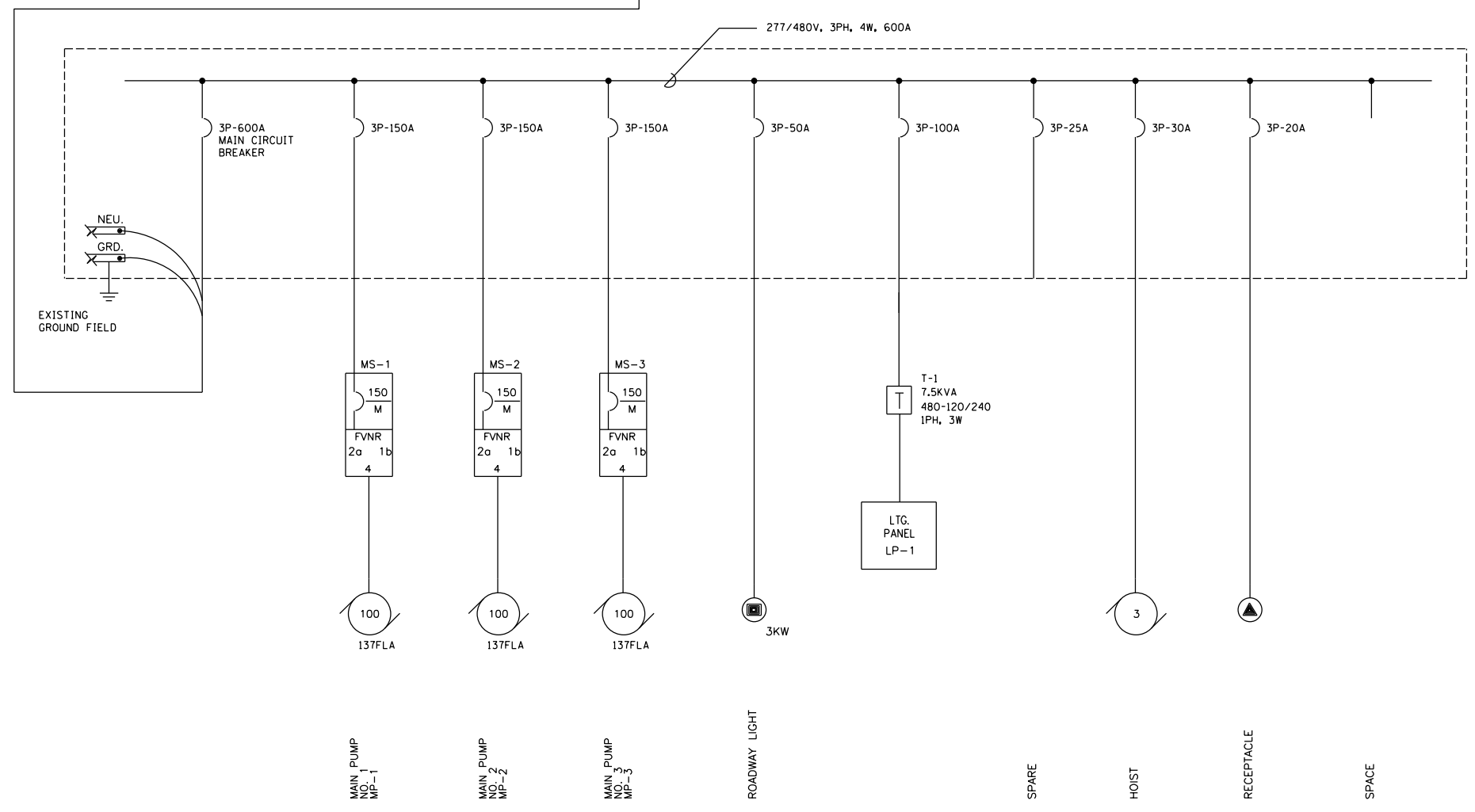
SUMMARY OF QUANTITIES				
CODE NO.	ITEM	UNIT	TOTAL QUANTITY	CONSTRUCTION TYPE CODE
				WEST FRANKFORT
67100100	MOBILIZATION	L SUM	1	0044
X0783300	PUMP STATION ELECTRICAL WORK	L SUM	1	0044

Prepared By:	<i>[Signature]</i> DISTRICT STUDIES & PLANS ENGINEER
Examined By:	<i>[Signature]</i> DISTRICT LAND ACQUISITION ENGINEER
Examined By:	<i>[Signature]</i> DISTRICT PROGRAM DEVELOPMENT ENGINEER
Examined By:	<i>[Signature]</i> DISTRICT OPERATIONS ENGINEER
Examined By:	<i>[Signature]</i> DISTRICT PROJECT IMPLEMENTATION ENGINEER
Examined By:	<i>[Signature]</i> DISTRICT CONSTRUCTION ENGINEER
Examined By:	<i>[Signature]</i> DISTRICT MATERIALS ENGINEER

G1



- NOTES:**
- CONTRACTOR SHALL DISCONNECT AND REMOVE CONDUIT AND CONDUCTORS FROM POWER PANEL TO SERVICE DISCONNECT. PROVIDE CONDUIT AND CONDUCTORS FROM SERVICE DISCONNECT TO NEWLY PROVIDED TRANSFER SWITCH. PROVIDE CONDUIT AND CONDUCTORS FROM NEWLY PROVIDED TRANSFER SWITCH TO EXISTING POWER PANEL.
 - PROVIDE RIGID STEEL CONDUIT IN ACCORDANCE WITH SECTION 1088 OF THE STANDARD SPECIFICATIONS.
 - PROVIDE TYPE XHHW-2 CONDUCTORS.
 - CONTRACTOR SHALL TEST CONDUCTORS IN ACCORDANCE WITH ARTICLE 801.15 OF THE STANDARD SPECIFICATIONS.



PANEL SCHEDULE PP-1

SURFACE MOUNTED NEMA 1
277/480 V, 3 PHASE, 4 WIRE
RATING _____ A.I.C.

600 MAIN BREAKER
600 MAIN BUS
100A MIN. GRD. BUS

CKT. NO.	TRIP/P	DESCRIPTION	PHASE			VA	DESCRIPTION	TRIP/P	CKT. NO.
			A	B	C				
1								2	
3	150/3	MP-1					MP-2	150/3	4
5								6	
7								8	
9		SPACE					MP-3	150/3	10
11								12	
13								14	
15	50/3	ROADWAY LIGHTING					LP-1	100/3	16
17								18	
19								20	
21	25/3	SPARE					HOIST	30/3	22
23								24	
25								26	
27	20/3	RECEPTACLE					SPACE		28
29								30	
TOTALS:									

**PP-1 ONE-LINE DIAGRAM
ELECTRICAL ROOM**



USER NAME =	DESIGNED - JRR	REVISED -
PLOT SCALE =	DRAWN - JRR	REVISED -
PLOT DATE =	CHECKED - MBS	REVISED -
	DATE - 10-16-17	REVISED -

**STATE OF ILLINOIS
DEPARTMENT OF TRANSPORTATION**

DISTRICT 9 ELECTRICAL UPGRADE ELECTRICAL ONE-LINE DIAGRAM AND ELEVATION			
SCALE:	SHEET	OF SHEETS	STA. TO STA.

RTE. I-57 & IL 149	SECTION	COUNTY FRANKLIN	TOTAL SHEETS 4	SHEET NO. 3
ILLINOIS FED. AID PROJECT				

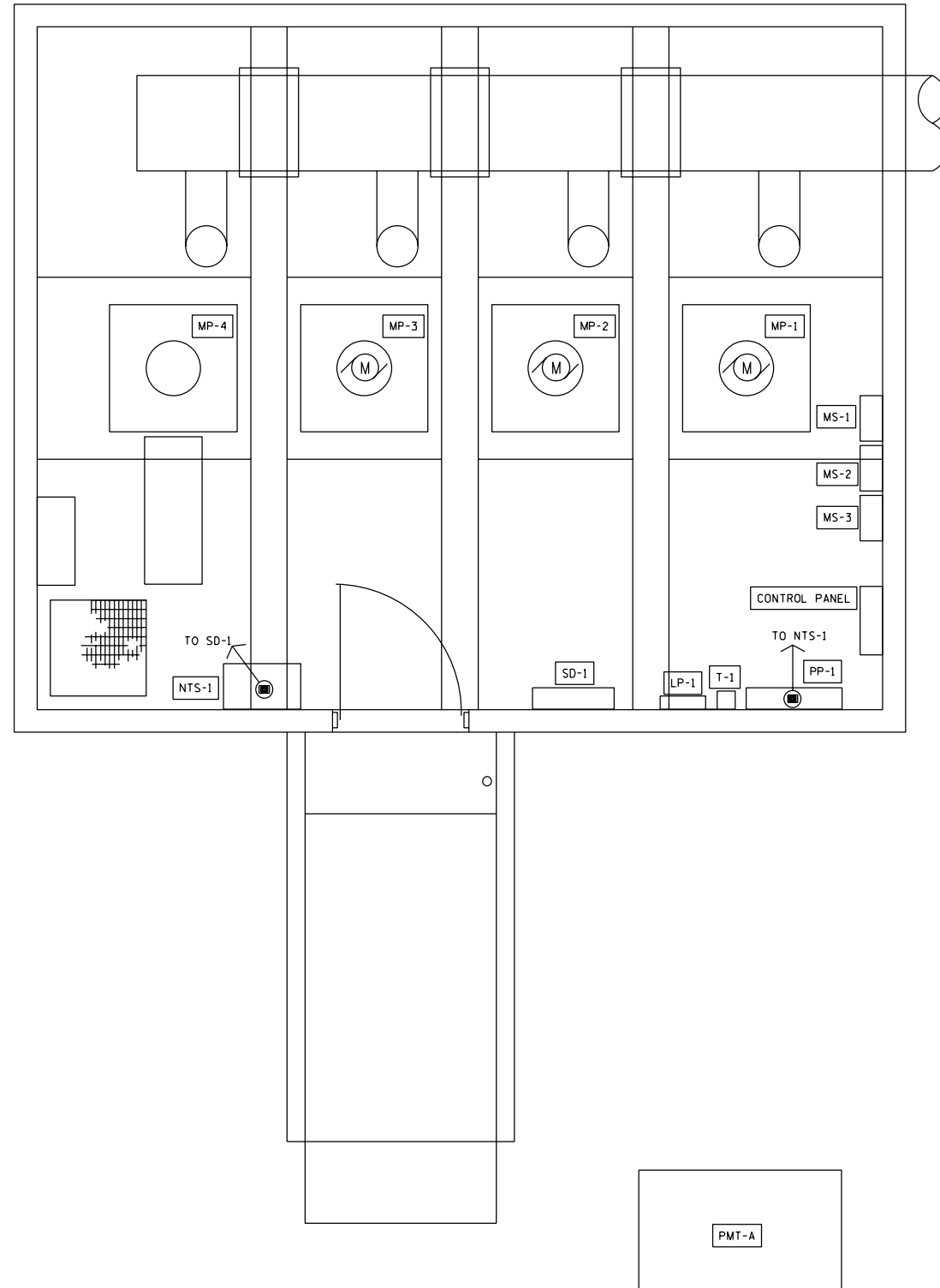
FILE NAME =

CONTRACT NO. 78620



NOTES:

1. REMOVE AND RELOCATE EXISTING SHELVING LOCATED ON THE WEST SIDE OF THE ENTRANCE DOOR.



PLAN AT EL. 391.78

SCALE: 0 1 2 3 4 5 6 FT.

E2



USER NAME =	DESIGNED - JRR	REVISED -
	DRAWN - JRR	REVISED -
PLOT SCALE =	CHECKED - MBS	REVISED -
PLOT DATE =	DATE - 10-16-17	REVISED -

**STATE OF ILLINOIS
DEPARTMENT OF TRANSPORTATION**

**DISTRICT 9 ELECTRICAL UPGRADE
ELECTRICAL
GRADE LEVEL POWER PLAN AT EL. 391.78**

SCALE: SHEET OF SHEETS STA. TO STA.

RTE.	SECTION	COUNTY	TOTAL SHEETS	SHEET NO.
1-57 & IL 149		FRANKLIN	4	4
CONTRACT NO. 78620			ILLINOIS FED. AID PROJECT	