

INDEX OF SHEETS

- 1 COVER SHEET
- 2 GENERAL NOTES, LOCATION MAPS
- 3-5 SUMMARY OF QUANTITIES
- 6-7 TYPICAL SECTIONS
- 8-16 LIGHTING SHEETS
- 17-20 BORING LOGS
- 21-23 DETAILS

LIST OF ILLINOIS DOT HIGHWAY STANDARDS

- 000001-06 STANDARD SYMBOLS, ABBREVIATIONS AND PATTERNS
- 001001-02 AREAS OF REINFORCEMENT BARS
- 001006 DECIMAL OF AN INCH AND OF A FOOT
- 701001-02 OFF-ROAD OPERATIONS 2L, 2W, MORE THAN 15' (4.5 m) AWAY
- 701006-05 OFF-ROAD OPERATIONS 2L, 2W, 15' (4.5 m) TO 24" (600 mm) FROM PAVEMENT EDGE
- 701011-04 OFF-ROAD MOVING OPERATIONS 2L, 2W, DAY ONLY
- 701201-04 LANE CLOSURE, 2L, 2W, DAY ONLY, FOR SPEEDS \geq 45 MPH
- 701451-05 RAMP CLOSURE FREEWAY/EXPRESSWAY
- 701456-05 PARTIAL EXIT RAMP CLOSURE FREEWAY/EXPRESSWAY
- 701901-07 TRAFFIC CONTROL DEVICES
- 821101-02 LUMINAIRE WIRING IN POLE
- 825011-03 LIGHTING CONTROLLER, PEDESTAL MOUNTED, 240V
- 830001-03 LIGHT POLE ALUMINUM MAST ARM
- 835001-01 LIGHT TOWER
- 836001-03 LIGHT POLE FOUNDATION
- 837001-04 LIGHT TOWER FOUNDATION
- 838001-01 BREAKAWAY DEVICES

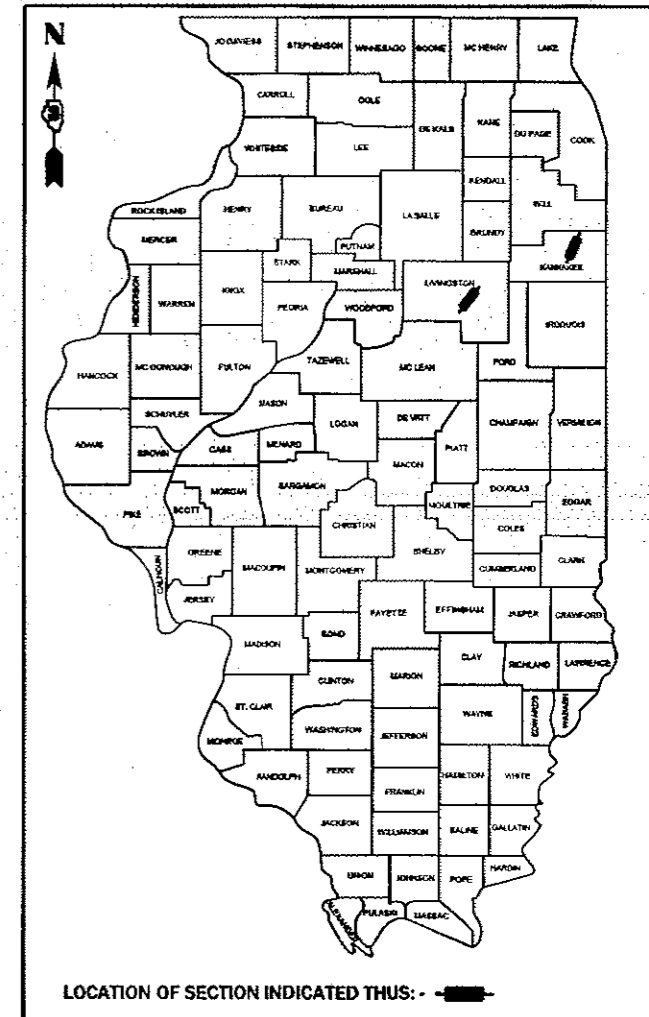
STATE OF ILLINOIS
DEPARTMENT OF TRANSPORTATION

**PROPOSED
HIGHWAY PLANS**

**FAI ROUTES 55 & 57 (I-55 and I-57)
SECTION (53-5HB, 5HB-3)HL & (46-2HB)HL
PROJECT NHPP-0UFS(035)
TYPE of IMPROVEMENT - LIGHT TOWER
REMOVAL AND REPLACEMENT
LIVINGSTON & KANKAKEE COUNTIES**

FAI RTE	SECTION	COUNTY	TOTAL SHEETS	SHEET NO.
55&57	(53-5HB, 5HB-3)HL & (46-2HB)HL	LIVINGSTON & KANKAKEE	23	1
ILLINOIS			CONTRACT NO. 66H99	

D-93-038-18

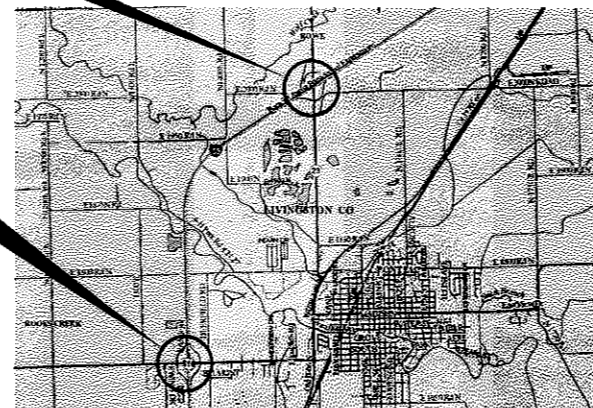


FAI 55 - INTERSTATE 55
FUNCTIONAL CLASSIFICATION - INTERSTATE
2015 ADT = 22,500
P.V. = 70.0% S.U. = 6.7% M.U. = 23.3%

FAI 57 - INTERSTATE 57
FUNCTIONAL CLASSIFICATION - INTERSTATE
2015 ADT = 28,500
P.V. = 75.8% S.U. = 4.2% M.U. = 20.0%

LOCATION #1
I-55 & IL 23
INTERCHANGE

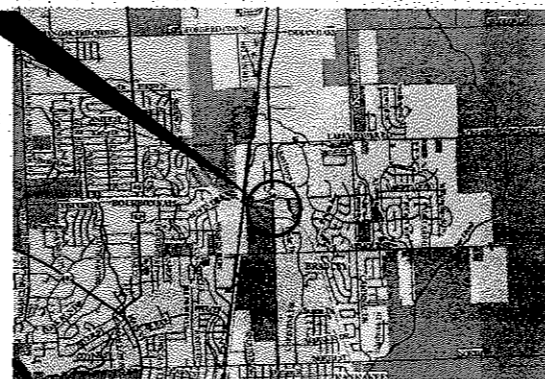
C-93-039-18



LOCATIONS 1 & 2 - LIVINGSTON COUNTY

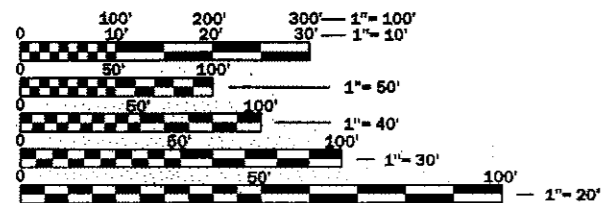
LOCATION #2
I-55 & IL 116
INTERCHANGE

LOCATION #3
I-57 & IL 50
INTERCHANGE



LOCATION 3 - KANKAKEE COUNTY

GROSS LENGTH = NET LENGTH = 3350 FT. = 0.64 MILES IL 23 INTERCHANGE
GROSS LENGTH = NET LENGTH = 3000 FT. = 0.57 MILES IL 116 INTERCHANGE
GROSS LENGTH = NET LENGTH = 500 FT. = 0.09 MILES IL 50 INTERCHANGE
PROJECT GROSS LENGTH = NET LENGTH = 6850 FT. = 1.30 MILES



FULL SIZE PLANS HAVE BEEN PREPARED USING STANDARD ENGINEERING SCALES. REDUCED SIZED PLANS WILL NOT CONFORM TO STANDARD SCALES. IN MAKING MEASUREMENTS ON REDUCED PLANS, THE ABOVE SCALES MAY BE USED.

J.U.L.I.E.
JOINT UTILITY LOCATION INFORMATION FOR EXCAVATION
1-800-892-0123
OR 811

PROJECT ENGINEER: DAVE ALEXANDER P.E.
UNIT CHIEF: PAT BRABOY
DISTRICT 3 NO. (815) 434-6131
CONTRACT NO. 66H99

STATE OF ILLINOIS
DEPARTMENT OF TRANSPORTATION

SUBMITTED October 20 2017
Kevin Marchak REGIONAL ENGINEER

November 30 2017
Margaret M. Addis ENGINEER OF DESIGN AND ENVIRONMENT

November 30 2017
Amel Alotaibi DIRECTOR OF PROGRAM DEVELOPMENT

**PRINTED BY THE AUTHORITY
OF THE STATE OF ILLINOIS**

FOR STABILIZATION, ALL TYPE III BARRICADES WILL REQUIRE A MINIMUM OF FOUR SAND BAGS PER BARRICADE.

SEEDING WILL NOT BE PERMITTED AT ANY TIME WHEN THE GROUND IS FROZEN, WET, OR IN AN UNTILLABLE CONDITION. LOCATIONS TO BE SEEDING WILL BE DETERMINED BY THE ENGINEER.

THERE ARE NO TREES SCHEDULED TO BE REMOVED ON THIS PROJECT. IF TREES ARE TO BE REMOVED FOR WHATEVER REASON THEY WILL NOT BE ALLOWED TO BE REMOVED BETWEEN APRIL 1ST AND SEPTEMBER 30TH OF ANY GIVEN YEAR.

THE FINISHED EARTHWORK SHALL HAVE A VEGETATION SUSTAINING SOIL COVERING THE TOP FOUR INCHES (100 MILLIMETERS) IN AREAS TO BE SEEDING OR SODDED. THE VEGETATION SUSTAINING SOIL REQUIRED WILL NOT BE PAID FOR SEPARATELY BUT WILL BE INCLUDED IN THE COST OF THE LIGHTING PAY ITEMS.

ALL EXCAVATED MATERIAL, WHICH INCLUDES DIGGING OR GRADING OF ANY SOIL OR FILL MATERIAL, WITH THE EXCEPTION OF AGGREGATE FILLS, MUST BE INCORPORATED WITHIN THE IDOT RIGHT OF WAY DUE TO ENVIRONMENTAL DOCUMENTATION REQUIREMENTS.

ALL ELEVATIONS REFERRING TO U.S.G.S. MEAN SEA LEVEL DATUM.

ABANDONED UNDERGROUND UTILITIES THAT CONFLICT WITH CONSTRUCTION SHALL BE DISPOSED OF OUTSIDE THE LIMITS OF THE RIGHT OF WAY ACCORDING TO ARTICLE 202.03 OF THE STANDARD SPECIFICATIONS AND AS DIRECTED BY THE ENGINEER. THIS WORK WILL NOT BE PAID FOR SEPARATELY, BUT WILL BE INCLUDED IN THE COST OF LIGHTING PAY ITEMS.

ANY REFERENCE TO A STANDARD IN THESE PLANS SHALL BE INTERPRETED TO MEAN THE EDITION AS INDICATED BY THE SUBNUMBER SHOWN IN THE LIST OF STANDARDS OR THE COPY INCLUDED IN THESE PLANS.

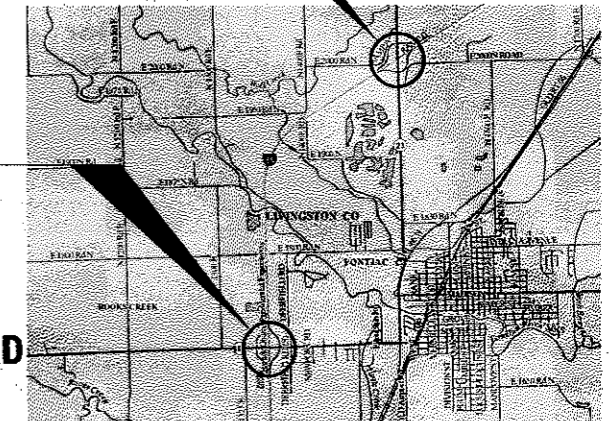
THE CONTRACTOR SHALL CONTACT JULIE AT LEAST 48 HOURS PRIOR TO EXCAVATION TO DETERMINE WHICH UTILITIES ARE IN THE AREA.

COMMITMENTS:

1. ENVIRONMENTAL COORDINATION
2. NO TREES TO BE REMOVED FROM APRIL 1 TO SEPTEMBER 30 OF ANY GIVEN YEAR
3. NO EXCAVATED MATERIAL TO BE REMOVED FROM JOBSITE
4. THE RESIDENT ENGINEER SHALL FOLLOW THE FOLLOWING INSTRUCTIONS WHEN EXTRACTING THE ANCHOR BOLT FROM THE IL 50/1-57 FOUNDATION:
All bolts shall be numbered and scribed with a diametrical line through the central point of the bolt diameter. The diametrical line shall be parallel with the diametral axis center line of the foundation that points true north. Numbers shall indicate the position of each anchor bolt with respect to the north axis of the foundation, which shall be assigned a position of 0° North. Their positions in clockwise order shall be recorded and furnished to the Engineer. Photographs shall be taken prior to commencement of partial foundation removal.
5. THE CONTRACTOR MUST NOTIFY THE PONTIAC MUNICIPAL AIRPORT 2 WEEKS PRIOR TO THE REMOVAL AND REPLACEMENT OF THE LIGHT TOWERS AT THE IL 23 INTERCHANGE.
6. ADDITIONAL PONTIAC MUNICIPAL AIRPORT COORDINATION IS NECESSARY FOR WORK ON LIGHT TOWERS/LIGHT POLES AT THE IL 23 INTERCHANGE-SEE SPECIAL PROVISIONS

LOCATION #1

TWO LIGHT TOWERS TO BE REMOVED AND REPLACED AND TWO LIGHT POLES TO BE REMOVED AND REPLACED

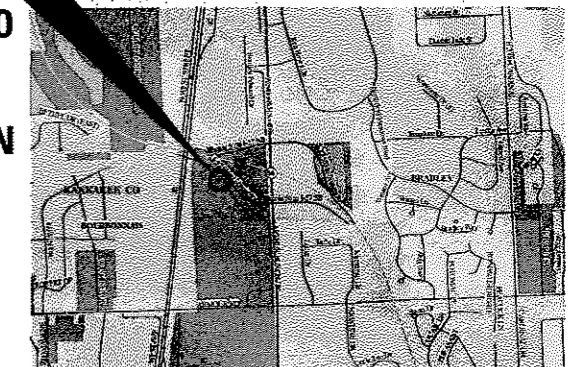


LOCATION #2

TWO LIGHT TOWERS TO BE REMOVED AND REPLACED AND THREE LIGHT POLES TO BE REMOVED AND REPLACED

LOCATION #3

I-57 SB OFF RAMP TO IL 50. RELOCATE EXIST. LIGHT TOWER TO NEW FOUNDATION



STATE OF ILLINOIS
DEPARTMENT OF TRANSPORTATION
DISTRICT THREE
AS BUILT INFORMATION

SUPERVISING CONSTRUCTION FIELD ENGINEER

RESIDENT ENGINEER / TECHNICIAN

START & END DATES
OF CONSTRUCTION:

INSPECTORS:

STATE OF ILLINOIS
DEPARTMENT OF TRANSPORTATION
DISTRICT THREE

PREPARED BY: Tom Benoit
DISTRICT STUDIES & PLANS ENGINEER

DATE: 10-20-17

EXAMINED BY: _____
DISTRICT CONSTRUCTION ENGINEER

DISTRICT MATERIALS ENGINEER
Tom Appasoul
DISTRICT OPERATIONS ENGINEER
• LIVINGSTON & KANKAKEE

FILE NAME	USER NAME	DESIGNED	REVISED	STATE OF ILLINOIS DEPARTMENT OF TRANSPORTATION	GENERAL NOTES AND LOCATION MAP	F.A.I. RTES.	SECTION	COUNTY	TOTAL SHEETS	SHEET NO.	
c:\pwr\work\ill\braboyck\05341170\300cc-40-conc.dgn	braboyck	DRAWN	REVISED			55&57	53-SHB, SHB-3JL & (46-2HB)JL		23	2	
		CHECKED	REVISED			SCALE:	SHEET	OF	SHEETS	STA.	TO STA.
		DATE	REVISED								

90/10 FED/ST

CODE NO.	ITEM	UNIT	TOTAL QUANTITY	CONSTRUCTION CODE	
				RURAL	URBAN
				HIGHWAY LIGHTING 0021 LIVINGSTON COUNTY	HIGHWAY LIGHTING 0021 KANKAKEE COUNTY
67100100	MOBILIZATION	L SUM	1	0.67	0.33
70100820	TRAFFIC CONTROL AND PROTECTION, STANDARD 701451	L SUM	1		1
70100825	TRAFFIC CONTROL AND PROTECTION, STANDARD 701456	L SUM	1	0.67	0.33
80400100	ELECTRIC SERVICE INSTALLATION	EACH	2	2	
81028750	UNDERGROUND CONDUIT, COILABLE NONMETALLIC CONDUIT, 2" DIA.	FOOT	160	160	
81028770	UNDERGROUND CONDUIT, COILABLE NONMETALLIC CONDUIT, 3" DIA.	FOOT	1070	1070	
81603010	UNIT DUCT, 600V, 2-1C NO.10, 1/C NO.10 GROUND, (XLP-TYPE USE), 3/4" DIA. POLYETHYLENE	FOOT	1150	1150	
81603025	UNIT DUCT, 600V, 2-1C NO.4, 1/C NO.4 GROUND, (XLP-TYPE USE), 1" DIA. POLYETHYLENE	FOOT	5050	4450	600
81603070	UNIT DUCT, 600V, 2-1C NO.2, 1/C NO.4 GROUND, (XLP-TYPE USE), 1 1/4" DIA. POLYETHYLENE	FOOT	9850	9850	
82500330	LIGHTING CONTROLLER, PEDESTAL MOUNTED, 240VOLT, 60AMP	EACH	2	2	
83009600	LIGHT POLE, ALUMINUM, 45 FT. M.H., 15 FT. MAST ARM	EACH	5	5	
83502400	LIGHT TOWER, 100 FT. MOUNTING HEIGHT, LUMINAIRE MT. - 6	EACH	4	4	
83600300	LIGHT POLE FOUNDATION, 30" DIAMETER	FOOT	32.5	32.5	
83700300	LIGHT TOWER FOUNDATION, 48" DIAMETER	FOOT	64.5	51	13.5

14

FILE NAME =	USER NAME = bnsboypc	DESIGNED -	REVISED -	STATE OF ILLINOIS DEPARTMENT OF TRANSPORTATION	SUMMARY OF QUANTITIES				F.A.I. RTE.	SECTION	COUNTY	TOTAL SHEETS	SHEET NO.	
c:\pw_work\pw\02\reboypc\0534117\DX\00000-01H-dtbl.dgn		DRAWN -	REVISED -		SCALE: _____	SHEET _____	OF _____	SHEETS	STA. _____	TO STA. _____	55857	(63-5HB, 5HB-3)HL & (46-2HB)HL	23	3
		CHECKED -	REVISED -						CONTRACT NO. 66H99					
\$MODELNAME\$	PLOT DATE = 10/21/2017	DATE -	REVISED -						ILLINOIS FED. AID PROJECT					

REV

90/10 PEP/ST

CODE NO.	ITEM	UNIT	TOTAL QUANTITY	CONSTRUCTION CODE	
				RURAL	URBAN
				HIGHWAY LIGHTING 0021 LIVINGSTON COUNTY	HIGHWAY LIGHTING 0021 KANKAKEE COUNTY
83800205	BREAKAWAY DEVICE, TRANSFORMER BASE, 15 INCH BOLT CIRCLE	EACH	5	5	
84200600	REMOVAL OF LIGHTING UNIT, NO SALVAGE	EACH	5	5	
84200804	REMOVAL OF POLE FOUNDATION	EACH	5	5	
84400205	RELOCATE EXISTING LIGHT TOWER	EACH	1		1
84500110	REMOVAL OF LIGHTING CONTROLLER	EACH	2	2	
84500120	REMOVAL OF ELECTRIC SERVICE INSTALLATION	EACH	2	2	
84500130	REMOVAL OF LIGHTING CONTROLLER FOUNDATION	EACH	2	2	
89502300	REMOVE ELECTRIC CABLE FROM CONDUIT	FOOT	13582	13000	582
X0323710	REMOVE CONDUIT ATTACHED TO STRUCTURE	FOOT	791	791	
X0326880	MESSAGE BOARD VEHICLE DRIVER	HOUR	200	200	
X0326907	PORTABLE, VEHICLE MOUNTED, CHANGEABLE MESSAGE SIGN	CAL MO	2	2	
X1400113	LUMINAIRE, LED, HORIZONTAL MOUNT, MEDIUM WATTAGE	EACH	5	5	
X7010520	TRAFFIC CONTROL AND PROTECTION, STANDARD 701201 (SPECIAL)	L SUM	1	1	
X7010805	TRAFFIC CONTROL AND PROTECTION, STANDARD 701401 (SPECIAL)	L SUM	1	1	

14

FILE NAME =	USER NAME = braboypc	DESIGNED -	REVISED -	STATE OF ILLINOIS DEPARTMENT OF TRANSPORTATION	SUMMARY OF QUANTITIES	F.A.I. RTE.	SECTION	COUNTY	TOTAL SHEETS	SHEET NO.	
c:\pw_work\pvidof\braboypc\0534117\03\0000-ehf-deta.dgn		DRAWN -	REVISED -			55&57	(53-5HB, 5HB-3)HL & (46-2HB)HL	*	23	4	
\$MODELNAME\$	PLOT SCALE = 100.0000' / in.	CHECKED -	REVISED -			CONTRACT NO. 66H99					
	PLOT DATE = 10/20/2017	DATE -	REVISED -			SCALE: _____	SHEET _____ OF _____ SHEETS	STA. _____	TO STA. _____	ILLINOIS FED. AID PROJECT	

REV

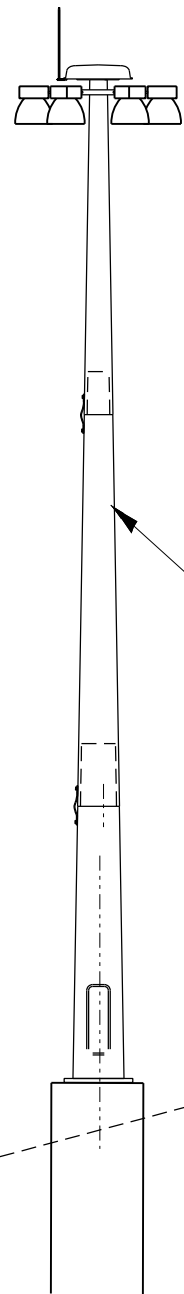
20/10 FEP/ST

CODE NO.	ITEM	UNIT	TOTAL QUANTITY	CONSTRUCTION CODE	
				RURAL	URBAN
				HIGHWAY LIGHTING 0021 LIVINGSTON COUNTY	HIGHWAY LIGHTING 0021 KANKAKEE COUNTY
X7015005	CHANGEABLE MESSAGE SIGN	CAL DAY	75	50	25
X8420502	REMOVAL OF LIGHT TOWER, NO SALVAGE	EACH	3	3	
X8420510	REMOVAL OF TOWER FOUNDATION	EACH	4	4	
X1400273	REMOVAL OF EXISTING TOWER LUMINAIRE, NO SALVAGE	EACH	48	48	
X1400275	MODIFY EXISTING LIGHT TOWER CONTROL PANEL	EACH	4	4	
X1400276	LUMINAIRE, LED, HIGH MAST, HORIZONTAL MOUNT	EACH	48	48	
X1400274	REMOVAL OF TOWER FOUNDATION, SALVAGE BOLTS	EACH	1		1

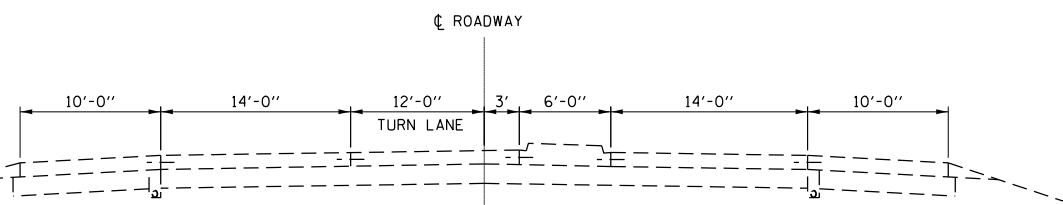
*LIVINGSTON & KANKAKEE

FILE NAME =	USER NAME = lraiboypc	DESIGNED -	REVISED -	STATE OF ILLINOIS DEPARTMENT OF TRANSPORTATION	SUMMARY OF QUANTITIES	F.A.I. RTE.	SECTION	COUNTY	TOTAL SHEETS	SHEET NO.
c:\pw_work\pw\dotbraiboypc\0534117\03\cccc-ah1-detail.dgn	DRAWN -	REVISED -	55&57			(53-5HB, 5HB-3)HL & (46-2HB)HL	*	23	5	
\$MODEL\$	PLOT SCALE = 100.0000' / in.	CHECKED -	REVISED -			CONTRACT NO. 66H99				
	PLOT DATE = 10/20/2017	DATE -	REVISED -			ILLINOIS FED. AID PROJECT				
					SCALE: _____	SHEET _____ OF _____ SHEETS		STA. _____ TO STA. _____		

REV

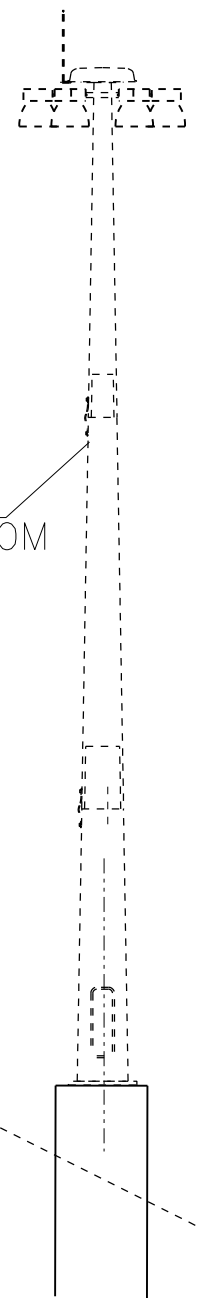


REMOVE AND REPLACE EXISTING LIGHT TOWER. PLACE ON NEW FOUNDATION NO MORE THAN 15' FROM EXISTING LIGHT TOWER*

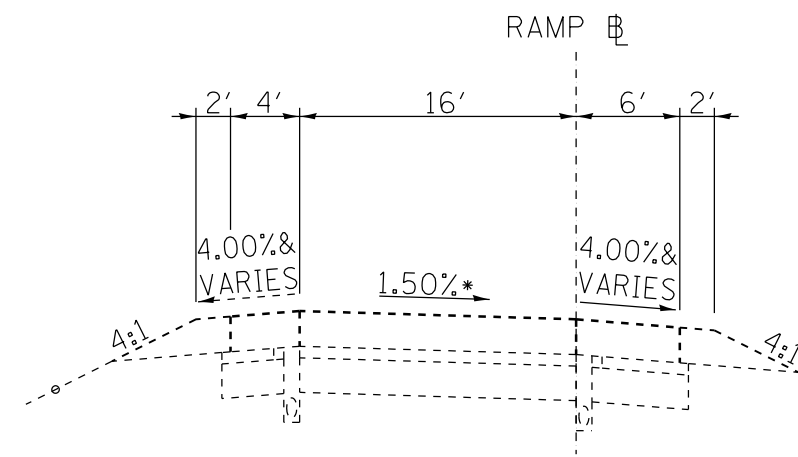


TYPICAL SECTION IL 23 & IL 116
LOOKING EAST FOR IL 116 (LOOKING WEST SIMILAR)
LOOKING SOUTH FOR IL 23 (LOOKING NORTH SIMILAR)

*NOTE-NO EXISTING LIGHT TOWER ON EASTMOST FOUNDATION AT THE IL 116 INTERCHANGE



RELOCATE EXISTING LIGHT TOWER ON NEW FOUNDATION.(PLACE NEW FOUNDATION NO MORE THAN 15' FROM EXISTING LIGHT TOWER)



I-57 RAMP "E"
LOOKING SOUTH

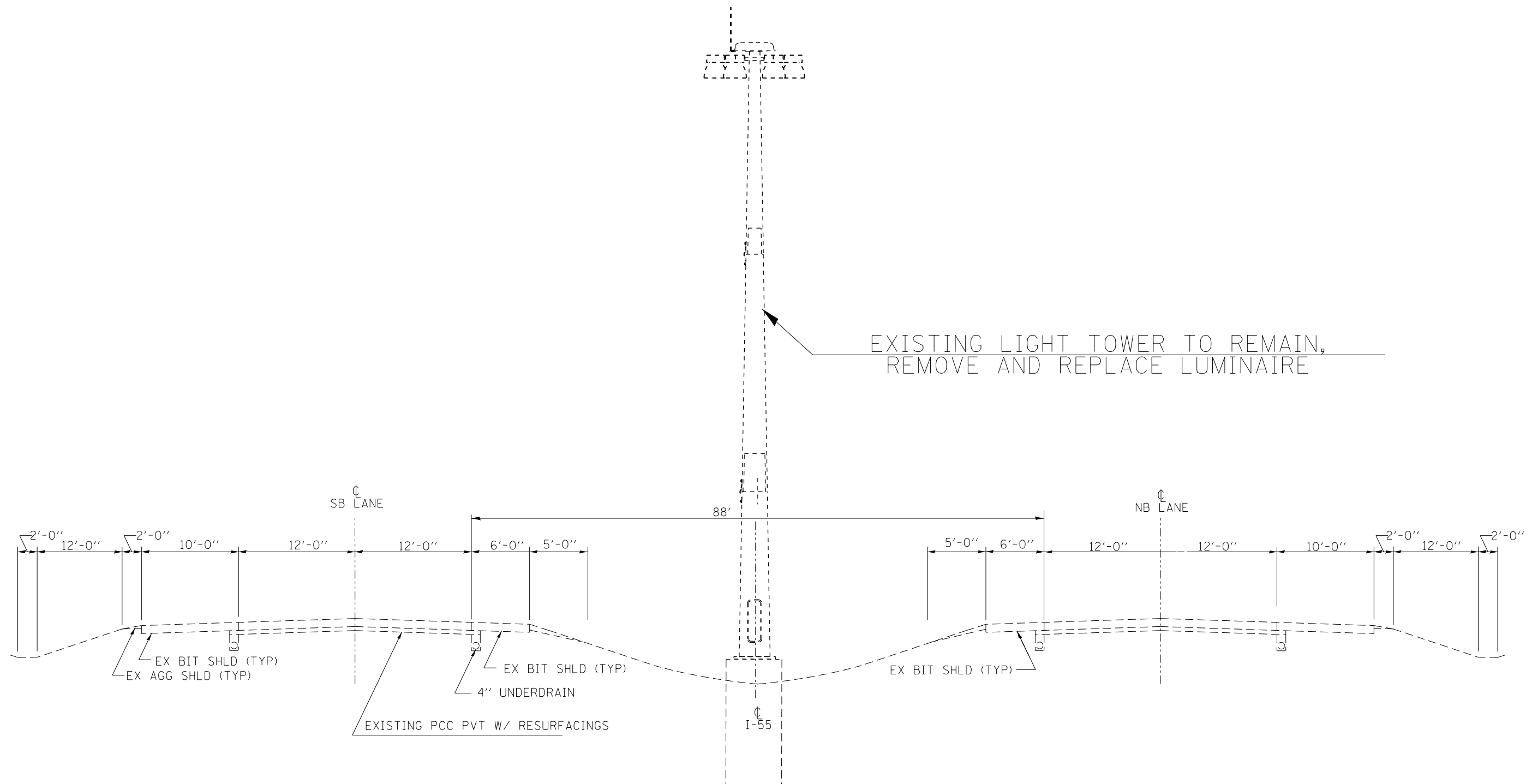
STA 14+18.33 TO STA 22+31.51

FILE NAME =	USER NAME = braboypc	DESIGNED -	REVISED -
cc:\pv_work\pwidott\braboypc\0534117\1D3xxxxx-shd-deta.s.dgn		DRAWN -	REVISED -
	PLOT SCALE = 100.0000' / in.	CHECKED -	REVISED -
\$MODELNAME\$	PLOT DATE = 10/20/2017	DATE -	REVISED -

STATE OF ILLINOIS
DEPARTMENT OF TRANSPORTATION

TYPICAL SECTIONS			
IL 116, IL 23 & I-57 RAMP			
SCALE: _____	SHEET _____ OF _____ SHEETS	STA. _____	TO STA. _____

*LIVINGSTON & KANKAKEE				
F.A.I. RTE.	SECTION	COUNTY	TOTAL SHEETS	SHEET NO.
55&57	(53-5HB, 5HB-3)HL & (46-2HB)HL	*	23	6
CONTRACT NO. 66H99				
ILLINOIS		FED. AID PROJECT		



EXISTING ROADWAY TYPICAL SECTION

FILE NAME =	USER NAME = braboypc	DESIGNED -	REVISED -
cc:\pw_work\pwidot\braboypc\0534117\ID3xxxxx-shd-deta.s.dgn		DRAWN -	REVISED -
	PLOT SCALE = 100.0000' / in.	CHECKED -	REVISED -
\$MODELNAME\$	PLOT DATE = 10/20/2017	DATE -	REVISED -

STATE OF ILLINOIS
DEPARTMENT OF TRANSPORTATION

TYPICAL SECTIONS
I-55

SCALE: _____ SHEET _____ OF _____ SHEETS STA. _____ TO STA. _____

*LIVINGSTON & KANKAKEE				
F.A. RTÉ.	SECTION	COUNTY	TOTAL SHEETS	SHEET NO.
55&57	(53-5HB, 5HB-3)HL & (46-2HB)HL	*	23	7
CONTRACT NO. 66H99				
ILLINOIS FED. AID PROJECT				

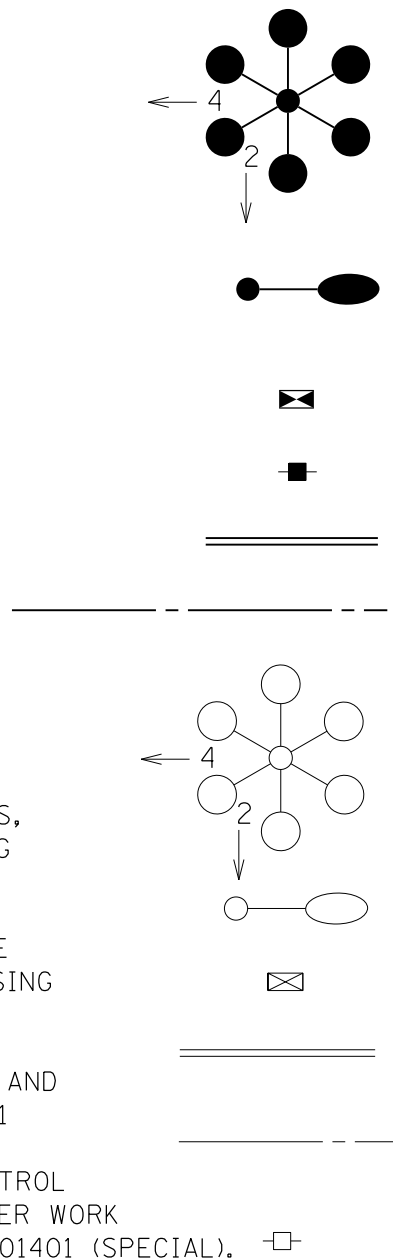
NOTES:

- CONTRACTOR TO EXERCISE CAUTION WHEN INSTALLING FOUNDATIONS AND LIGHT POLES TO AVOID DAMAGE TO EXISTING AERIAL POWER CABLES AND ENSURE ADEQUATE HORIZONTAL CLEARANCE FROM OVERHEAD POWER LINES.
- 2" OR 3" DIA. CNC. TO BE BORED UNDER PAVEMENT.
- THE CONTRACTOR SHALL SET POLES 15' BEHIND EDGE OF PAVEMENT.
- NO POLE TO BE INSTALLED IN THE FLOWLINE OF DITCH. POLE SETBACK TO BE ADJUSTED IF NECESSARY AS DIRECTED BY THE ENGINEER.
- EXISTING TOWERS TO REMAIN SHALL BE MODIFIED AS SHOWN ON "MODIFY LIGHT TOWER CONTROL PANEL" DETAIL. PROPOSED TOWERS SHALL BE PROVIDED AND INSTALLED AS SHOWN ON "MODIFY LIGHT TOWER CONTROL PANEL" DETAIL.
- IT IS THE INTENT OF THIS PROJECT TO KEEP THE EXISTING LIGHT TOWERS AND LIGHT POLES OPERATIONAL UNTIL THE NEW TOWERS AND POLES ARE OPERATIONAL. THE CONTRACTOR IS ALLOWED 24 HOURS AT EACH INTERCHANGE WHERE THERE CAN BE NO LIGHTING. IN ORDER TO ACCOMPLISH THIS, THE PROPOSED CONDUIT, CONTROLLERS, LIGHT POLES AND LIGHT TOWERS MUST BE OFFSET FROM THE EXISTING CONDUIT, CONTROLLERS, POLES AND TOWERS. THE NEW POLES AND TOWERS SHALL BE NO MORE THAN 15' FROM THE EXISTING POLES AND TOWERS AND IN NO CASE SHALL THE PROPOSED POLES AND TOWERS BE CLOSER TO OR FARTHER FROM THE EDGE OF PAVEMENT THAN THE EXISTING POLES AND TOWERS.
- TRAFFIC CONTROL TO REMOVE AND REPLACE LIGHT TOWERS ON IL 116 AND IL 23 SHALL BE TRAFFIC CONTROL AND PROTECTION, STANDARD 701201 (SPECIAL)-SEE SPECIAL PROVISIONS. THE RAMPS SHALL REMAIN OPEN AT ALL TIMES AT THE IL 23 AND IL 116 INTERCHANGES. TRAFFIC CONTROL TO BE USED WHEN PLACING CONDUIT, REPLACING LUMINAIRES AND OTHER WORK IN THE I-55 MEDIAN SHALL BE TRAFFIC CONTROL AND PROTECTIONS 701401 (SPECIAL).
- FOR THE MAINLINE TOWERS ALONG I-55, THE CONTRACTOR SHALL INSTALL HIGH MAST LUMINAIRES PERPENDICULAR TO THE HIGHWAY WITH SIX (6) LUMINAIRES AIMED TOWARD THE EXIT RAMP TERMINAL. FOR THE RAMP INTERSECTION TOWERS, THE CONTRACTOR SHALL INSTALL HIGH MAST LUMINAIRES PERPENDICULAR TO THE ROADWAY WITH FOUR (4) LUMINAIRES AIMED AT IL-23 OR IL 116, AND TWO (2) LUMINAIRES AIMED PERPENDICULAR TO THE ON AND OFF RAMPS.

INDEX OF SHEETS

- RL-1 LIGHTING GENERAL NOTES, INDEX, BILL OF MATERIALS
- RL-2 EXISTING LIGHTING REMOVAL IL 23 AND I-55 INTERCHANGE
- RL-3 EXISTING LIGHTING REMOVAL IL 116 AND-55 INTERCHANGE
- RL-4 PROPOSED LIGHTING PLAN IL 23 AND I-55 INTERCHANGE
- RL-5 PROPOSED LIGHTING PLAN IL 116 AND I-55 INTERCHANGE
- RL-6 WIRING DIAGRAMS
- RL-7 MODIFY LIGHT TOWER CONTROL PANEL DETAIL
- RL-8 LIGHT TOWER DETAIL
- RL-9 PROPOSED LIGHT TOWER RELOCATION IL 50 AND I-57 INTERCHANGE

LEGEND



PROPOSED HIGH MAST TOWER, 100' M.H. WITH (6) LED HIGHMAST LUMINAIRES ON 48" CONCRETE FOUNDATION. LUMINAIRE AIMING AS SHOWN WITH ARROW AND NUMBER.

PROPOSED LIGHTING UNIT, ALUMINUM, 45' M.H. WITH 15' TRUSS ARM, LED HORIZONTAL MOUNT LUMINAIRE, BREAKAWAY TRANSFORMER BASE ON 30" CONCRETE FOUNDATION.

PROPOSED PEDESTAL MOUNTED LIGHTING CONTROLLER, 240V, SINGLE PHASE.

PROPOSED ELECTRIC SERVICE INSTALLATION

PROPOSED COILABLE NONMETALLIC CONDUIT, SIZE AND LENGTH AS NOTED.

PROPOSED UNIT DUCT, SIZE AS NOTED.

EXISTING HIGH MAST TOWER, 100' M.H. WITH (6) LUMINAIRES. REMOVE EXISTING LUMINAIRES AND REPLACE WITH LED HIGH MAST FIXTURES. MODIFY EXISTING LOWERING SYSTEM TO OPERATE ON 240V SINGLE PHASE AS SHOWN ON DETAIL U.N.O. TO BE REMOVED COMPLETELY WITH FOUNDATION

EXISTING LIGHTING UNIT AND FOUNDATION TO BE REMOVED.

EXISTING LIGHTING CONTROLLER 480V SINGLE PHASE TO BE REMOVED.

EXISTING CONDUIT TO BE ABANDONED IN PLACE.

EXISTING WIRE IN UNIT DUCT. EXISTING CABLE SHALL BE REMOVED AND CONDUIT ABANDONED IN PLACE.

EXISTING ELECTRIC SERVICE TO BE REMOVED.

Bill of Materials

DESCRIPTION	UNIT	IL 23 QUANTITIES	IL 116 QUANTITIES	IL 50 QUANTITIES	TOTAL QUANTITY
ELECTRIC SERVICE INSTALLATION	EACH		1		2
UNDERGROUND CONDUIT, COILABLE NONMETALLIC CONDUIT, 2" DIA.	FOOT	60	100		160
UNDERGROUND CONDUIT, COILABLE NONMETALLIC CONDUIT, 3" DIA.	FOOT	555	515		1070
UNIT DUCT, 600V, 2-1C NO.10, 1/C NO.10 GROUND, (XLP-TYPE USE), 3/4" DIA. POLYETHYLENE	FOOT	400	750		1150
UNIT DUCT, 600V, 2-1C NO.4, 1/C NO.4 GROUND, (XLP-TYPE USE), 1" DIA. POLYETHYLENE	FOOT	1850	2600	600	5050
UNIT DUCT, 600V, 2-1C NO.2, 1/C NO.4 GROUND, (XLP-TYPE USE), 1 1/4" DIA. POLYETHYLENE	FOOT	5,350	4,500		9850
LIGHTING CONTROLLER, PEDESTAL MOUNTED, 240VOLT, 60AMP	EACH	1	1		2
LIGHT POLE, ALUMINUM, 45 FT. M.H., 15 FT. MAST ARM	EACH	2	3		5
LIGHT TOWER, 100 FT. MOUNTING HEIGHT, LUMINAIRE MT. - 6	EACH	2	2		4
LIGHT POLE FOUNDATION, 30" DIAMETER	FOOT	13	19.5		32.5
LIGHT TOWER FOUNDATION, 48" DIAMETER	FOOT	24	27	13.5	64.5
BREAKAWAY DEVICE, TRANSFORMER BASE, 15 INCH BOLT CIRCLE	EACH	2	3		5
REMOVAL OF LIGHTING UNIT, NO SALVAGE	EACH	2	3		5
REMOVAL OF POLE FOUNDATION	EACH	2	3		5
RELOCATE EXISTING LIGHT TOWER	EACH			1	1
REMOVAL OF LIGHTING CONTROLLER	EACH	1	1		2
REMOVAL OF ELECTRIC SERVICE INSTALLATION	EACH	1	1		2
REMOVAL OF LIGHTING CONTROLLER FOUNDATION	EACH	1	1		2
REMOVE ELECTRIC CABLE FROM CONDUIT	FOOT	6,500	6,500	582	13582
REMOVE CONDUIT ATTACHED TO STRUCTURE	FOOT	412	379		791
LUMINAIRE, LED, HORIZONTAL MOUNT, MEDIUM WATTAGE	EACH	2	3		5
REMOVAL OF LIGHT TOWER, NO SALVAGE	EACH	2	1		3
REMOVAL OF TOWER FOUNDATION	EACH	2	2		4
REMOVAL OF EXISTING TOWER LUMINAIRE, NO SALVAGE	EACH	24	24		48
LUMINAIRE, LED, HIGH MAST, HORIZONTAL MOUNT	EACH	24	24		48
MODIFY EXISTING LIGHT TOWER CONTROL PANEL	EACH	2	2		4
REMOVAL OF TOWER FOUNDATION, SALVAGE BOLTS	EACH			1	1

*LIVINGSTON & KANKAKEE

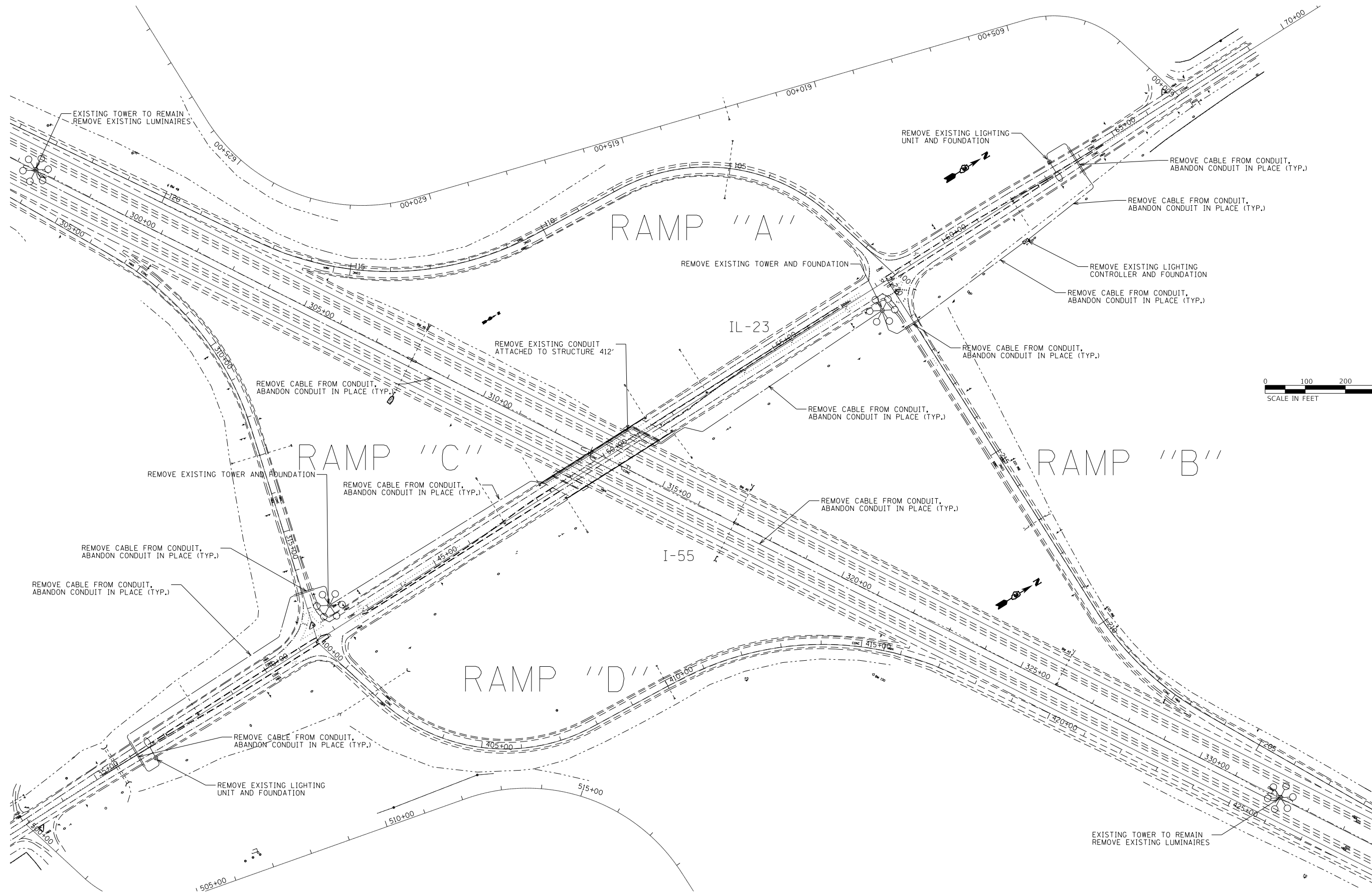
FILE NAME =	USER NAME = braboypc	DESIGNED -	REVISED -
cc:\pw_work\pwwid\braboypc\0534117\03xxxxx-shd-deta\rdgn		DRAWN -	REVISED -
	PLOT SCALE = 100.0000' / in.	CHECKED -	REVISED -
\$MODELNAME\$	PLOT DATE = 10/21/2017	DATE -	REVISED -

**STATE OF ILLINOIS
DEPARTMENT OF TRANSPORTATION**

LIGHTING GENERAL NOTES, INDEX,
BILL OF MATERIALS

SCALE: _____ SHEET RL-1 OF RL-9 SHEETS STA. _____ TO STA. _____

F.A.I. RTE.	SECTION	COUNTY	TOTAL SHEETS	SHEET NO.
55&57	(53-5HB, 5HB-3)HL & (46-2HB)HL	*	23	8.
			CONTRACT NO. 66H99	
		ILLINOIS	FED. AID PROJECT	



MODEL: \\MODEL\NAME\$
FILE: NAME.ctb
C:\work\p1\idat\braboypc\05331117\03xxx-rl-2\rl-2.dgn

USER NAME = braboypc	DESIGNED - _____	REVISED - _____
DRAWN - _____	REVISIONS - _____	REVISIONS - _____
PLOT SCALE = 240.0000' / in.	CHECKED - _____	REVISIONS - _____
PLOT DATE = 10/20/2017	DATE - _____	REVISIONS - _____

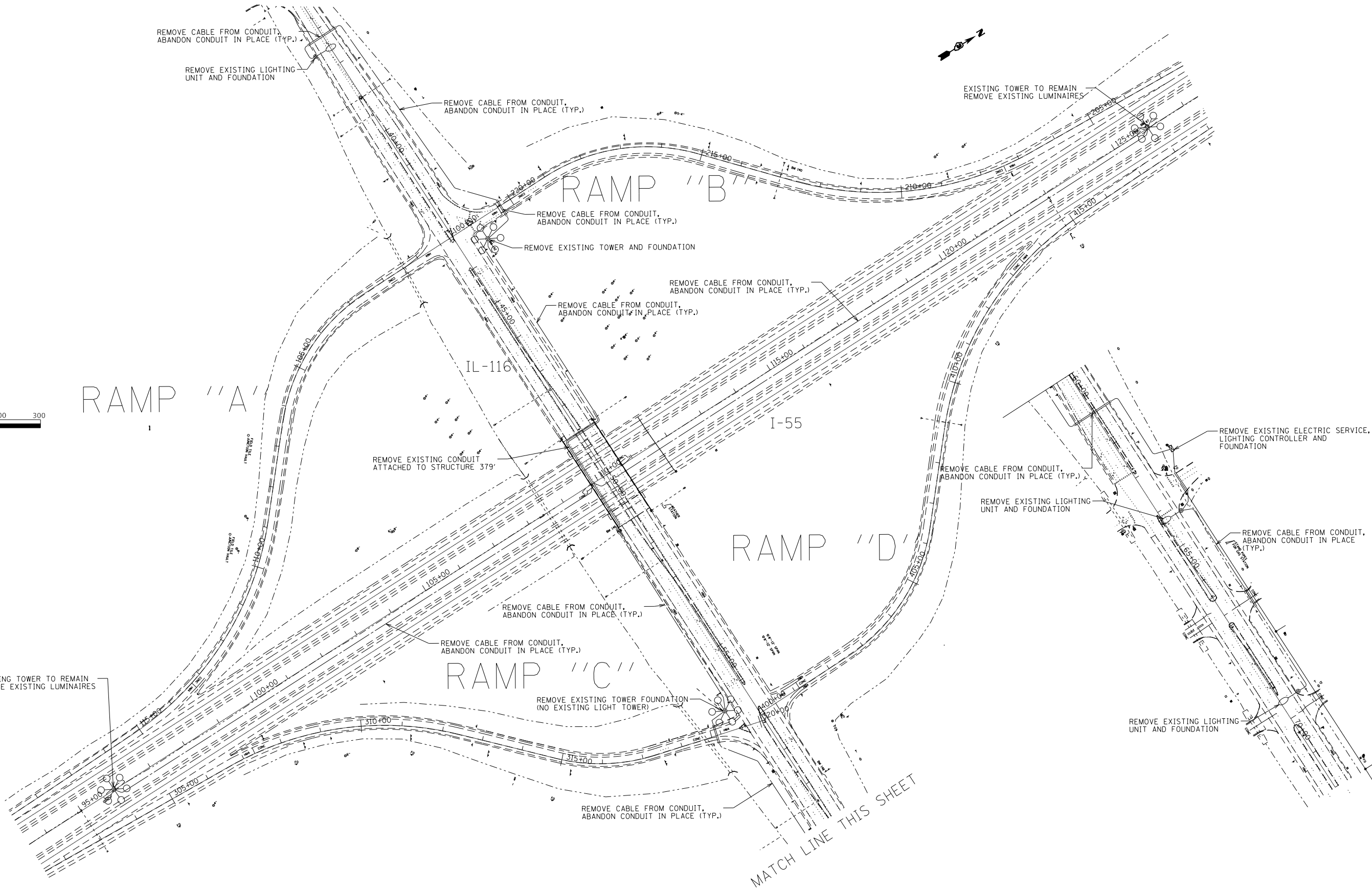
**STATE OF ILLINOIS
DEPARTMENT OF TRANSPORTATION**

**EXISTING LIGHTING REMOVAL
IL 23 AND I-55 INTERCHANGE**

SCALE: _____ SHEET RL-2 OF RL-9 SHEETS STA. _____ TO STA. _____

*LIVINGSTON & KANKAKEE

F.A. RTE.	SECTION	COUNTY	TOTAL SHEETS	SHEET NO.
55&57	(53-5HB, 5HB-3)HL & (46-2HB)HL	*	23	9
CONTRACT NO. 66H99				
ILLINOIS FED. AID PROJECT				



MODEL: s:\MODEL\NAMES
 FILE NAME: s:\p\work\p\liver\braboypc\40534117\03xxx-rlh-draw.dgn

USER NAME = braboypc	DESIGNED - _____	REVISED - _____
	DRAWN - _____	REVISED - _____
PLOT SCALE = 240.0000' / in.	CHECKED - _____	REVISED - _____
PLOT DATE = 10/20/2017	DATE - _____	REVISED - _____

STATE OF ILLINOIS
DEPARTMENT OF TRANSPORTATION

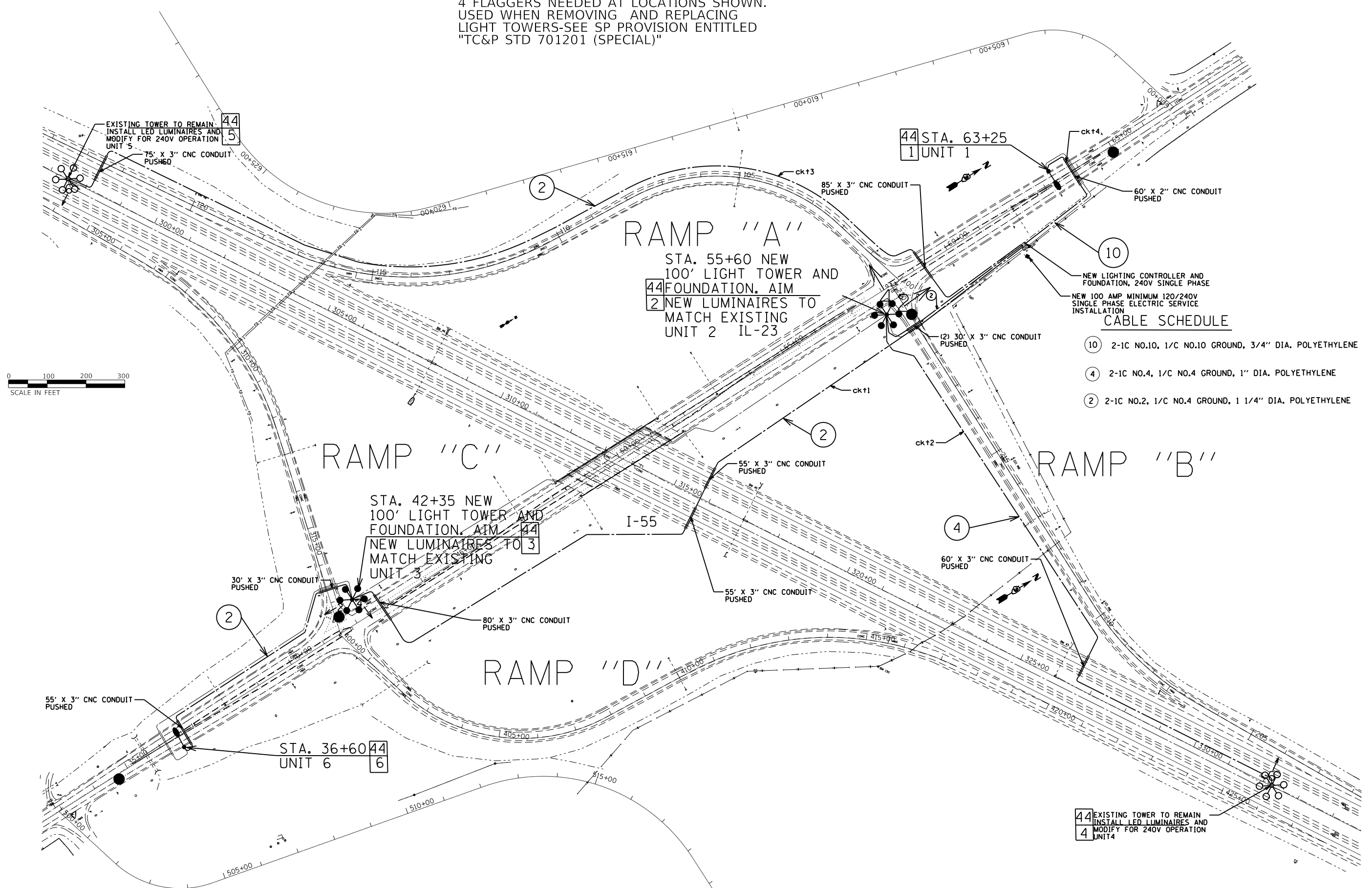
EXISTING LIGHTING REMOVAL
 IL 116 AND I-55 INTERCHANGE

SCALE: _____ SHEET **RL-3** OF **RL-9** SHEETS STA. _____ TO STA. _____

*LIVINGSTON & KANKAKEE				
F.A. RTE.	SECTION	COUNTY	TOTAL SHEETS	SHEET NO.
55&57	(53-5HB, 5HB-3)HL & (46-2HB)HL	*	23	10
CONTRACT NO. 66H99				
ILLINOIS FED. AID PROJECT				

● FLAGGER WITH TRAFFIC CONTROL SIGN
 4 FLAGGERS NEEDED AT LOCATIONS SHOWN.
 USED WHEN REMOVING AND REPLACING
 LIGHT TOWERS-SEE SP PROVISION ENTITLED
 "TC&P STD 701201 (SPECIAL)"

NOTE-THE LOCATION OF ALL UTILITIES ARE APPROXIMATE-PLEASE CONTACT JULIE PRIOR TO DIG



- CABLE SCHEDULE**
- ⑩ 2-1C NO.10, 1/C NO.10 GROUND, 3/4" DIA. POLYETHYLENE
 - ④ 2-1C NO.4, 1/C NO.4 GROUND, 1" DIA. POLYETHYLENE
 - ② 2-1C NO.2, 1/C NO.4 GROUND, 1 1/4" DIA. POLYETHYLENE

MODEL: S:\MODEL\NAMES
 FILE NAME: C:\pwwork\l\dwg\l\braboypc\0534117\03\xxxxx-sht-cable.dwg

USER NAME = braboypc	DESIGNED - _____	REVISED - _____
PLOT SCALE = 241.8123' / in.	DRAWN - _____	REVISED - _____
PLOT DATE = 10/20/2017	CHECKED - _____	REVISED - _____
	DATE - _____	REVISED - _____

**STATE OF ILLINOIS
 DEPARTMENT OF TRANSPORTATION**

**PROPOSED LIGHTING PLAN-
 IL 23 AND I-55 INTERCHANGE**

SCALE: _____ SHEET RL-4 OF RL-9 SHEETS STA. _____ TO STA. _____

*LIVINGSTON & KANKAKEE				
F.A. RTE.	SECTION	COUNTY	TOTAL SHEETS	SHEET NO.
55&57	(53-5HB, 5HB-3)HL & (46-2HB)HL		23	11
			CONTRACT NO. 66H99	
ILLINOIS FED. AID PROJECT				

● FLAGGER WITH TRAFFIC CONTROL SIGN
 4 FLAGGERS NEEDED AT LOCATIONS SHOWN.
 USED WHEN REMOVING AND REPLACING
 LIGHT TOWERS-SEE SP PROVISION ENTITLED
 "TC&P STD 701201 (SPECIAL)"

NOTE-THE LOCATION OF ALL UTILITIES ARE APPROXIMATE-PLEASE CONTACT JULIE PRIOR TO DIG

45 STA. 37+65
 7 UNIT 7
 76' X 3" CNC CONDUIT PUSHED

45 EXISTING TOWER TO REMAIN
 6 INSTALL LED LUMINAIRES AND
 MODIFY FOR 240V OPERATION
 UNIT 6
 75' X 3" CNC CONDUIT
 PUSHED

CABLE SCHEDULE

- ⑩ 2-1C NO.10, 1/C NO.10 GROUND, 3/4" DIA. POLYETHYLENE
- ④ 2-1C, NO.4, 1/C NO.4 GROUND, 1" DIA. POLYETHYLENE
- ② 2-1C NO.2, 1/C NO.4 GROUND, 1 1/4" DIA. POLYETHYLENE

STA. 43+65 NEW
 100 FT LIGHT TOWER
 AND FOUNDATION. AIM
 45
 NEW LUMINAIRES TO
 MATCH EXISTING
 UNIT 4



RAMP "A"

RAMP "B"

RAMP "D"

RAMP "C"

44 EXISTING TOWER TO REMAIN
 5 INSTALL LED LUMINAIRES AND
 MODIFY FOR 240V OPERATION
 UNIT 5

45 STA. 56+45 NEW
 100 FT LIGHT TOWER
 AND FOUNDATION. AIM
 3 NEW LUMINAIRES TO
 MATCH EXISTING
 UNIT 3

45 STA. 69+45
 2 UNIT 2

45 STA. 64+30
 1 UNIT 1

MATCH LINE THIS SHEET

MATCH LINE THIS SHEET

MODEL: S:\MODEL\NAMES
 FILE NAME: C:\pwwork\pwwork\braboyce\08534117\03\xxxx-sht-detail.dgn

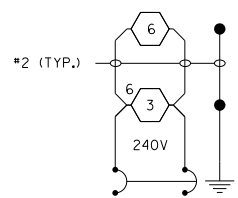
USER NAME = braboyce	DESIGNED - _____	REVISED - _____
DRAWN - _____	REVISED - _____	REVISED - _____
PLOT SCALE = 241.8123' / in.	CHECKED - _____	REVISED - _____
PLOT DATE = 10/20/2017	DATE - _____	REVISED - _____

STATE OF ILLINOIS
 DEPARTMENT OF TRANSPORTATION

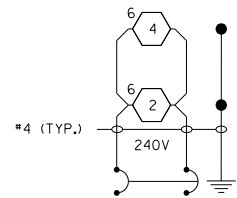
PROPOSED LIGHTING PLAN
 IL 116 AND I-55 INTERCHANGE

SCALE: _____ SHEET RL-5 OF RL-9 SHEETS STA. _____ TO STA. _____

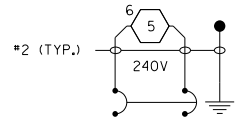
*LIVINGSTON & KANKAKEE				
F.A. RTE.	SECTION	COUNTY	TOTAL SHEETS	SHEET NO.
55&57	(53-5HB, 5HB-3)HL & (46-2HB)HL		23	12
			CONTRACT NO. 66H99	
ILLINOIS FED. AID PROJECT				



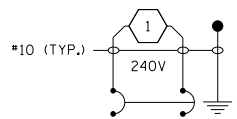
2 POLE 30 AMP BREAKER
CKT #1



2 POLE 40 AMP BREAKER
CKT #2

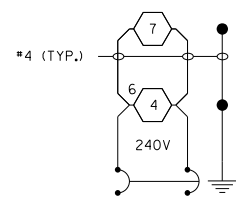


2 POLE 30 AMP BREAKER
CKT #3

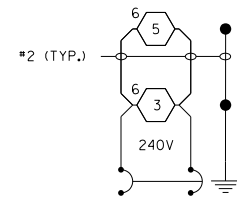


2 POLE 20 AMP BREAKER
CKT #4

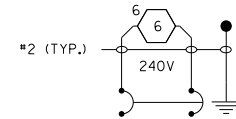
LIGHTING CONTROLLER
I-55 AT IL-23
PEDESTAL MOUNT, 240V



2 POLE 30 AMP BREAKER
CKT #1

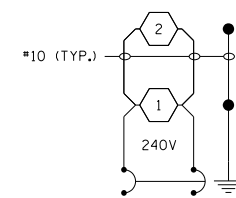


2 POLE 40 AMP BREAKER
CKT #2



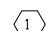
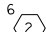

2 POLE 30 AMP BREAKER
CKT #3

LIGHTING CONTROLLER
I-55 AT IL-116
PEDESTAL MOUNT, 240V



2 POLE 20 AMP BREAKER
CKT #4

LEGEND

-  PROPOSED LED LUMINAIRE, MEDIUM WATTAGE. NUMBER INSIDE CIRCLE INDICATES POLE NUMBER.
-  PROPOSED HIGH MAST LED LUMINAIRE, HIGH WATTAGE. NUMBER INSIDE CIRCLE INDICATES POLE NUMBER. NUMBER OUTSIDE OF SYMBOL (6) INDICATES NUMBER OF LUMINAIRES ON TOWER.
-  GROUND ROD

NOTES:

1. ALL NECESSARY REVISIONS TO THE WIRING SHOWN ON THIS SHEET SHALL BE MADE AT NO ADDITIONAL COST TO THE DEPARTMENT AND TO THE SATISFACTION OF THE ENGINEER.

*LIVINGSTON & KANKAKEE

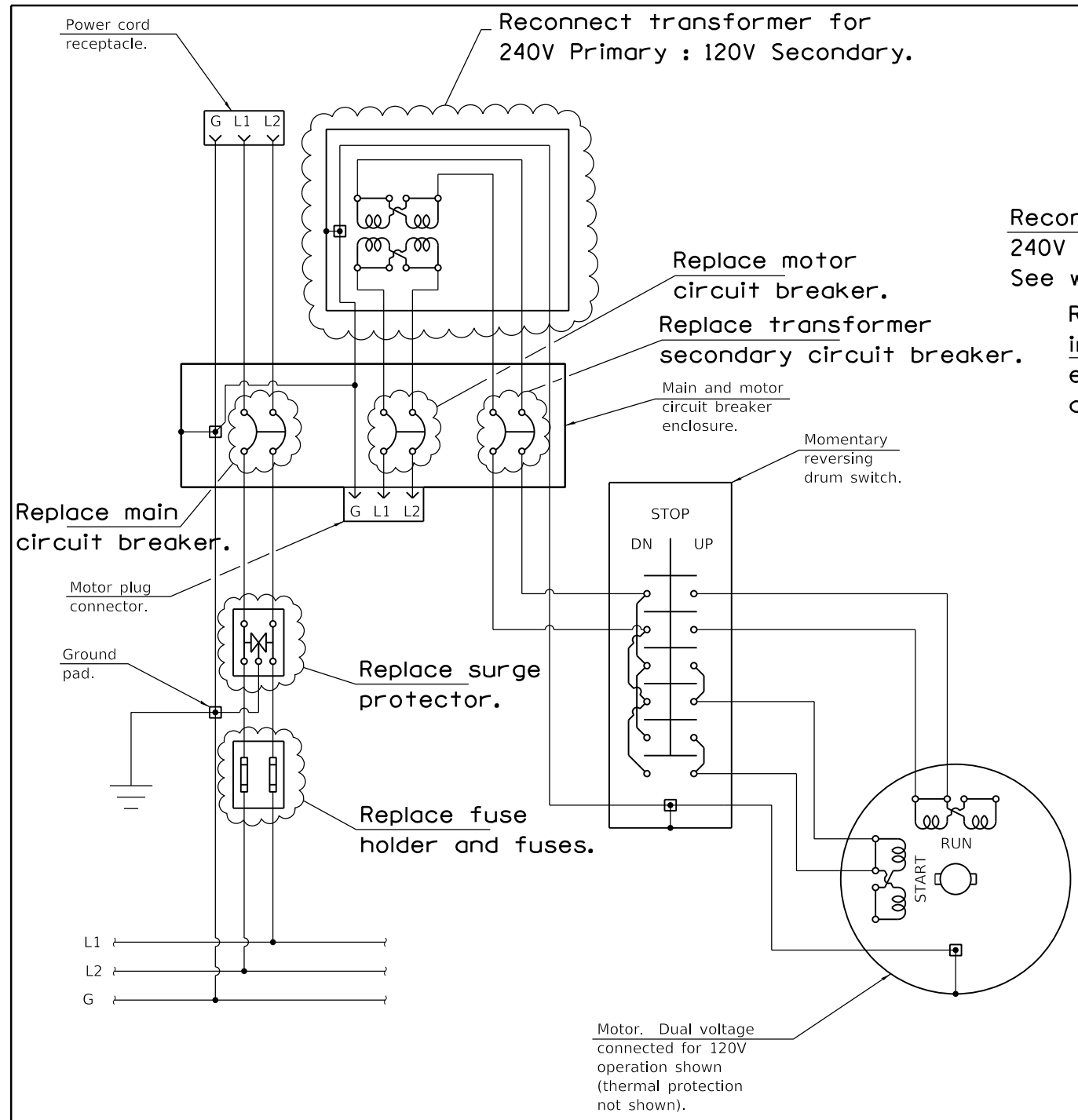
FILE NAME =	USER NAME = braboypc	DESIGNED -	REVISED -
cc:\pw_work\pwidot\braboypc\0534117\ID3xxxxx-shd-deta\sig		DRAWN -	REVISED -
\$MODELNAME\$	PLOT SCALE = 100.0000 "/in.	CHECKED -	REVISED -
	PLOT DATE = 10/20/2017	DATE -	REVISED -

STATE OF ILLINOIS
DEPARTMENT OF TRANSPORTATION

WIRING DIAGRAMS

SCALE: _____ SHEET RL-6 OF RL-9 SHEETS STA. _____ TO STA. _____

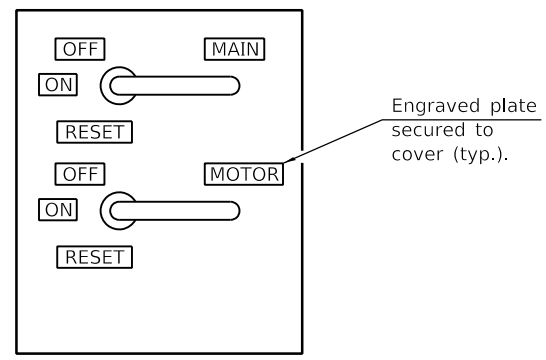
F.A. RTÉ.	SECTION	COUNTY	TOTAL SHEETS	SHEET NO.
55&57	(53-5HB, 5HB-3)HL & (46-2HB)HL	*	23	13
CONTRACT NO. 66H99				
ILLINOIS FED. AID PROJECT				



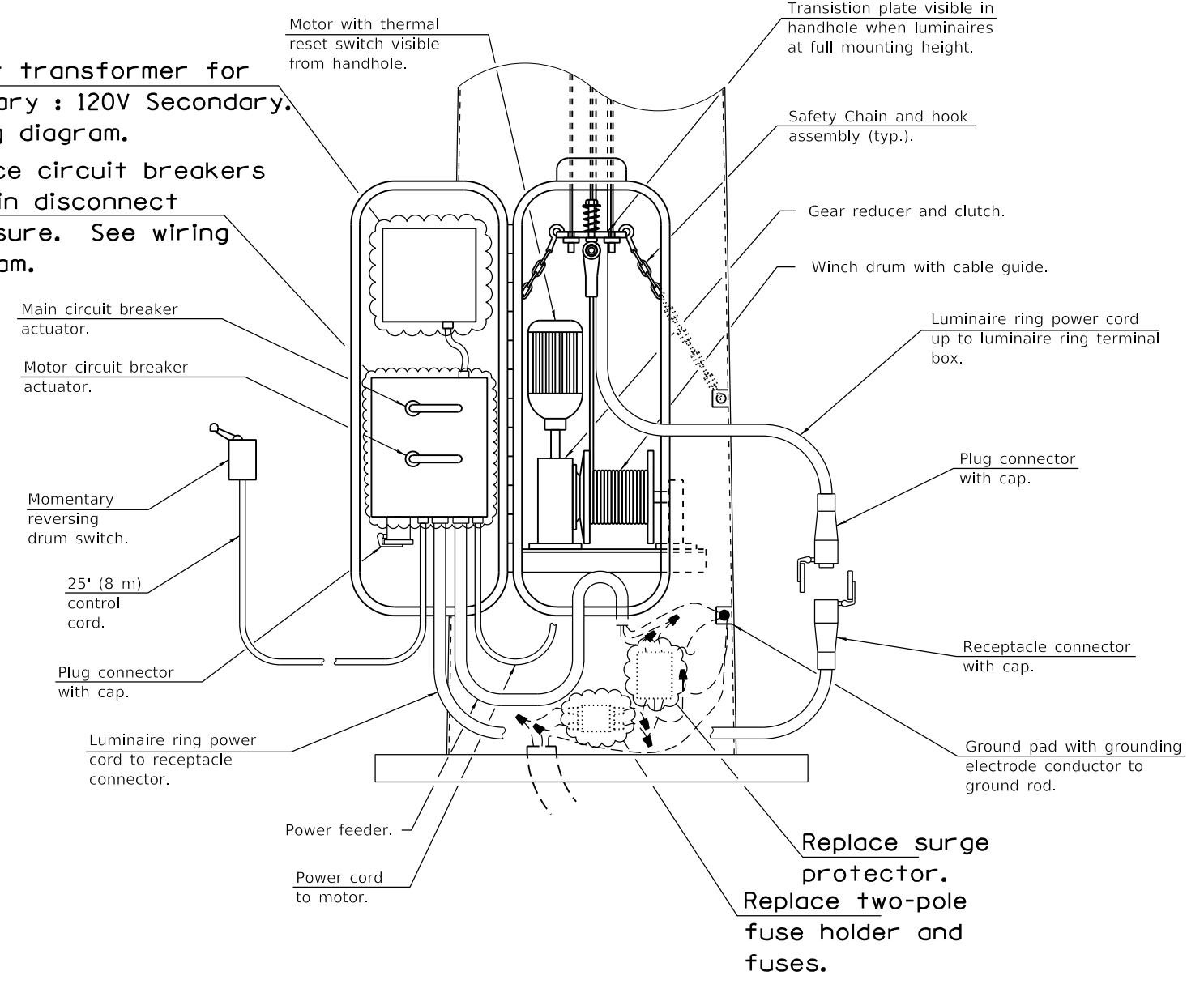
LOWERING SYSTEM WIRING DIAGRAM

Reconnect transformer for 240V Primary : 120V Secondary. See wiring diagram.

Replace circuit breakers in main disconnect enclosure. See wiring diagram.



DISCONNECT SCHEDULE



LOWERING AND SUPPORT MECHANISM

MODIFY LIGHT TOWER CONTROL PANEL

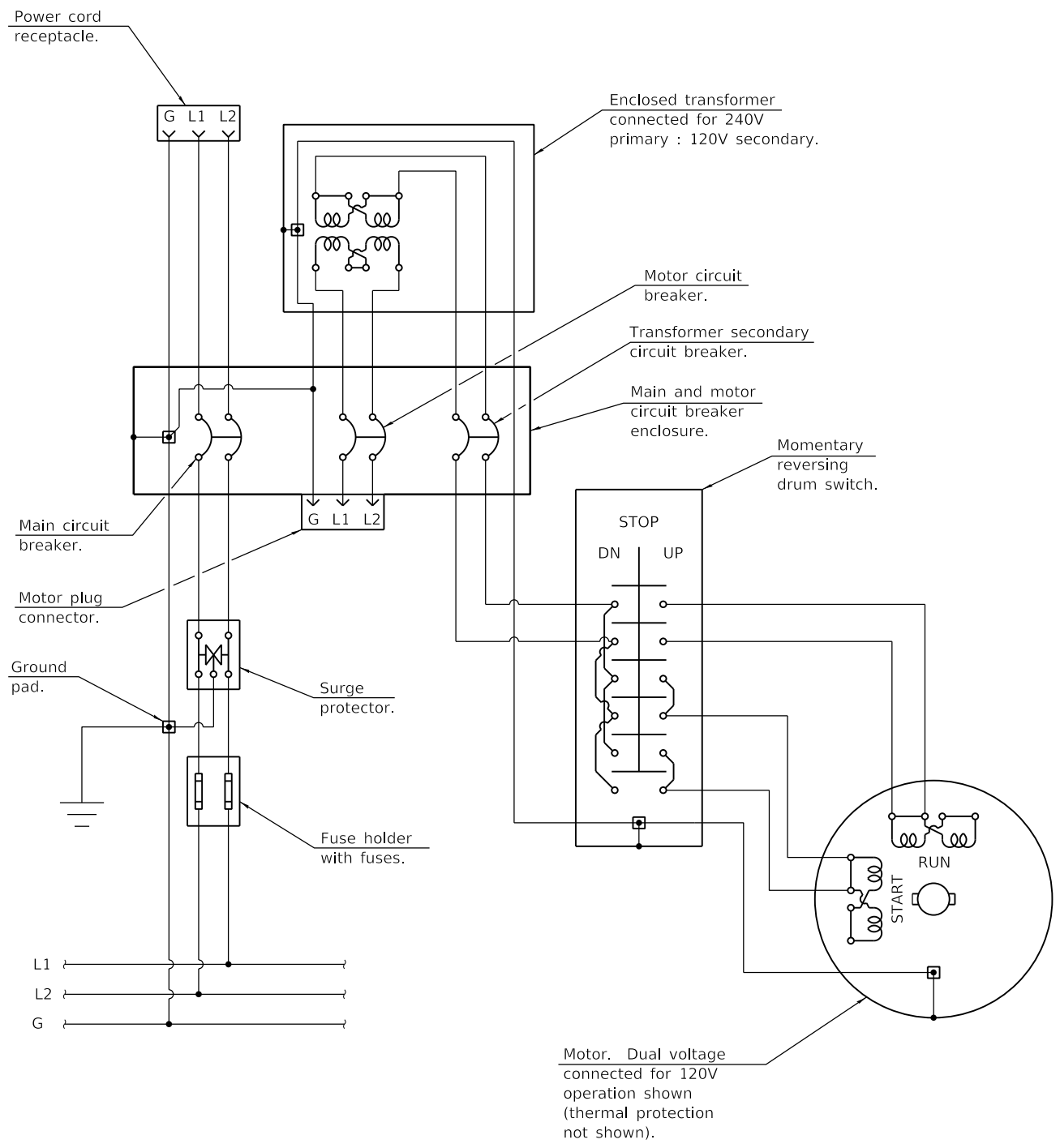
FILE NAME =	USER NAME = braboypc	DESIGNED -	REVISED -
cc:\pw_work\pwidot\braboypc\0534117\1D3xxxxx-shd-detail.dgn		DRAWN -	REVISED -
	PLOT SCALE = 100.0000 "/in.	CHECKED -	REVISED -
\$MODELNAME\$	PLOT DATE = 10/20/2017	DATE -	REVISED -

STATE OF ILLINOIS
DEPARTMENT OF TRANSPORTATION

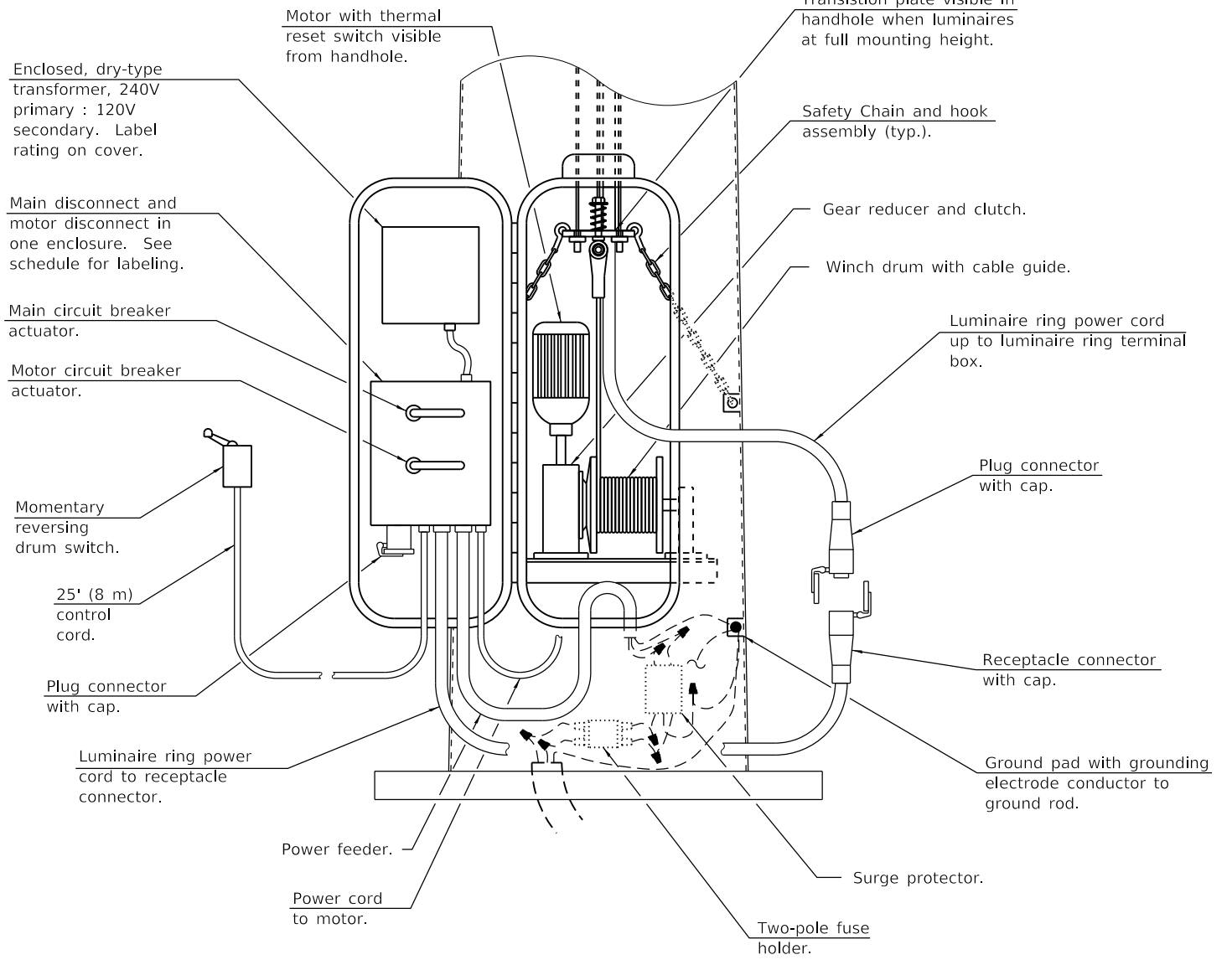
MODIFY LIGHT TOWER CONTROL PANEL DETAIL

SCALE: _____ SHEET RL-7 OF RL-9 SHEETS STA. _____ TO STA. _____

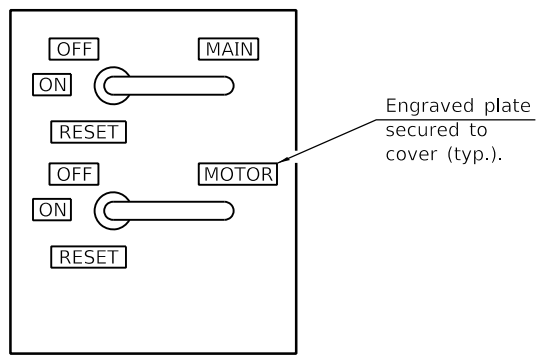
F.A. RTÉ.	SECTION	COUNTY	TOTAL SHEETS	SHEET NO.
55&57	(53-5HB, 5HB-3)HL & (46-2HB)HL	*	23	14
CONTRACT NO. 66H99				
ILLINOIS FED. AID PROJECT				



LOWERING SYSTEM WIRING DIAGRAM



LOWERING AND SUPPORT MECHANISM



DISCONNECT SCHEDULE

LIGHT TOWER

*LIVINGSTON & KANKAKEE

FILE NAME =	USER NAME = braboypc	DESIGNED -	REVISED -
cc:\pv_work\pwidot\braboypc\0534117\1D3xxxxx-shd-detail.dgn		DRAWN -	REVISED -
	PLOT SCALE = 100.0000 "/in.	CHECKED -	REVISED -
\$MODELNAME\$	PLOT DATE = 10/20/2017	DATE -	REVISED -

STATE OF ILLINOIS
DEPARTMENT OF TRANSPORTATION

LIGHT TOWER DETAIL

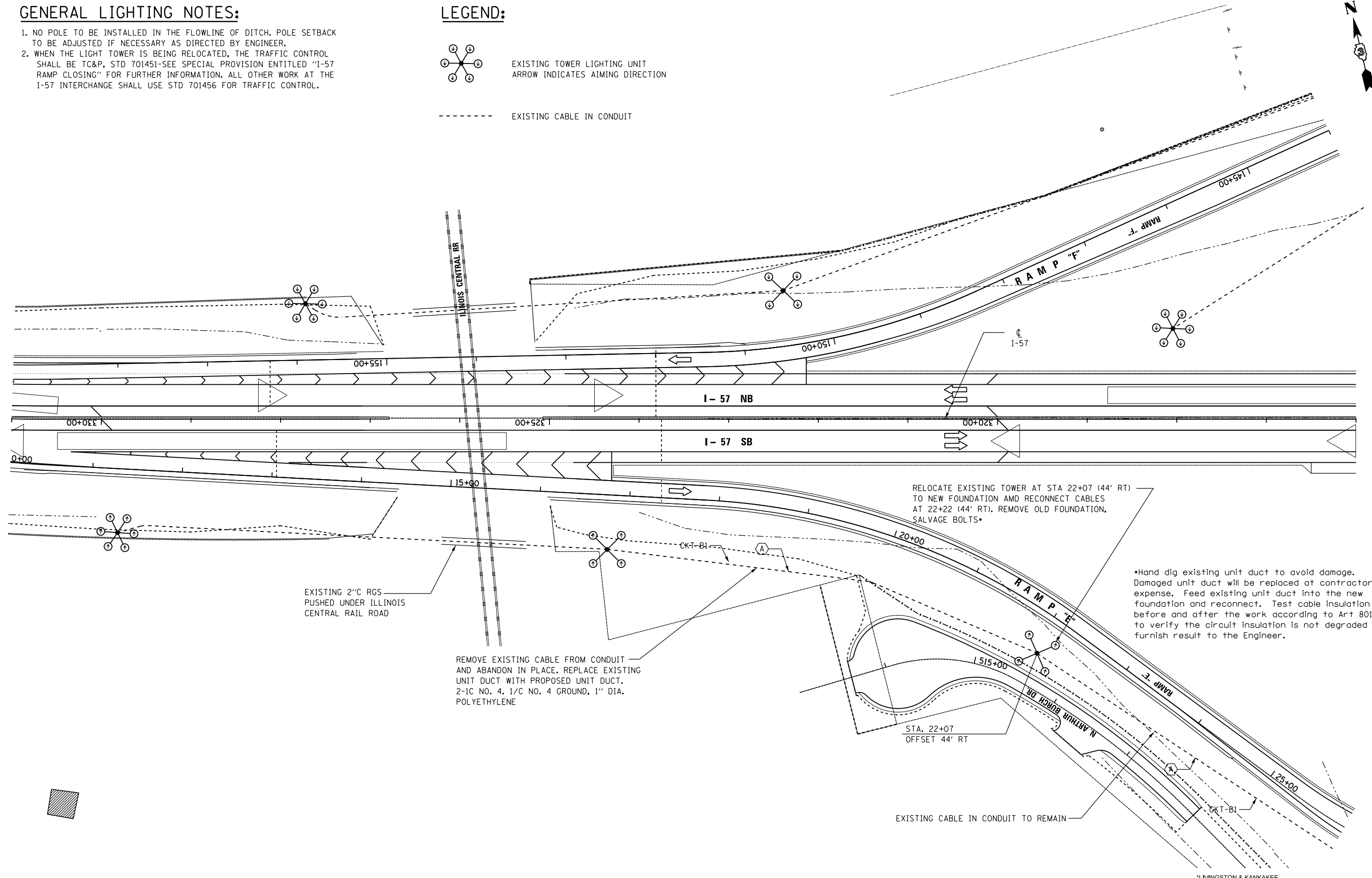
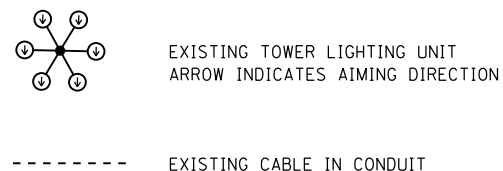
SCALE: _____ SHEET RL-8 OF RL-9 SHEETS STA. _____ TO STA. _____

F.A. RTÉ.	SECTION	COUNTY	TOTAL SHEETS	SHEET NO.
55857	(53-5HB, 5HB-3)HL & (46-2HB)HL	*	23	15
CONTRACT NO. 66H99				
ILLINOIS FED. AID PROJECT				

GENERAL LIGHTING NOTES:

1. NO POLE TO BE INSTALLED IN THE FLOWLINE OF DITCH. POLE SETBACK TO BE ADJUSTED IF NECESSARY AS DIRECTED BY ENGINEER.
2. WHEN THE LIGHT TOWER IS BEING RELOCATED, THE TRAFFIC CONTROL SHALL BE TC&P, STD 701451-SEE SPECIAL PROVISION ENTITLED "I-57 RAMP CLOSING" FOR FURTHER INFORMATION. ALL OTHER WORK AT THE I-57 INTERCHANGE SHALL USE STD 701456 FOR TRAFFIC CONTROL.

LEGEND:



MODEL: 440DELNAM15
FILE NAME: 5309\work\paved\braboypc\0534117\IL-10.DGN

USER NAME = braboypc	DESIGNED - HS	REVISED -
	DRAWN - KK	REVISED -
PLOT SCALE = 1/8" = 1000' / in.	CHECKED - HS	REVISED -
PLOT DATE = 10/20/2017	DATE -	REVISED -

**STATE OF ILLINOIS
DEPARTMENT OF TRANSPORTATION**

**INTERCHANGE LIGHTING PLAN
I-57, RAMP "E" AND RAMP "F"**

SCALE: SHEET RL-9 OF RL-9 SHEETS STA. TO STA.

F.A. RTE.	SECTION	COUNTY	TOTAL SHEETS	SHEET NO.
55&57	(53-5HB, 5HB-3)HL & (46-2HB)HL		23	16
CONTRACT NO. 66H99				
ILLINOIS FED. AID PROJECT				



SOIL BORING LOG

Date 3/14/12

ROUTE FAI 57 (I-57) DESCRIPTION I-57 and IL 50 Interchange, Ramp E (southbound exit ramp). LOGGED BY Larry Myers
 SECTION (46-2)1, HBR, VBR LOCATION SW 1/4, SEC. 16, TWP. 31N, RNG. 12E,
 COUNTY Kankakee DRILLING METHOD Hollow Stem Auger HAMMER TYPE CME Automatic

STRUCT. NO. Station	DEPTH H	BLOW S	UCS Qu	MOIST T	Surface Water Elev. ft	Stream Bed Elev. ft	Groundwater Elev.: First Encounter Upon Completion After Hrs.	DEPTH H	BLOW S	UCS Qu	MOIST T
Brown and minor gray silty clay loam till fill with minor black silty clay loam and minor hot mix asphalt pieces.	3										
	4	3.0-4.5	16								
	5	P									
	8										
	5										
	7	4.5	16								
	9	P									
	9										
	5										
	7	>4.5	16								
	7	P									
	8										
	3										
	4	2.5-4.25	15								
	6	P									
8											
696.42											
Brown silty clay, gray and brown silty clay loam till, black silty clay loam with minor organics.	4										
	6	3.0-4.5	18								
	8	P									
	8										
	-10										
Original embankment at 11.5 ft.	3										
	4	2.5-4.0	17								
	6	P									
	8										
	3										
End of Boring	6	5.1	16								
	6	S									
	7										
	3										
	-15	2.2-5.4	16								
7	S										
7											
688.42											
End of Boring											
	-20										

The Unconfined Compressive Strength (UCS) Failure Mode is indicated by (B-Bulge, S-Shear, P-Penetrometer)
 The SPT (N value) is the sum of the last two blow values in each sampling zone (AASHTO T206)
 BBS, form 137 (Rev. 8-99)



SOIL BORING LOG

Date 3/14/12

ROUTE FAI 57 (I-57) DESCRIPTION I-57 and IL 50 Interchange, Ramp E (southbound exit ramp). LOGGED BY Larry Myers
 SECTION (46-2)1, HBR, VBR LOCATION SW 1/4, SEC. 16, TWP. 31N, RNG. 12E,
 COUNTY Kankakee DRILLING METHOD Hollow Stem Auger HAMMER TYPE CME Automatic

STRUCT. NO. Station	DEPTH H	BLOW S	UCS Qu	MOIST T	Surface Water Elev. ft	Stream Bed Elev. ft	Groundwater Elev.: First Encounter Upon Completion After Hrs.	DEPTH H	BLOW S	UCS Qu	MOIST T	
												(ft)
Brown silty clay loam till, gray silty clay till. Minor black silty clay loam fill.	4											
	5	4.0-4.5	15									
	4	P										
	7											
	4											
	5	9.6-4.0	16									
	8	S										
	8											
	696.10											
	Gray silty clay with silt pockets and 10 inches of gray clay and hot mix asphalt millings.	3										
		-5	2.0-4.0	12								
		6	P									
	694.10											
	Gray and brown silty clay loam till with some gray silty clay till and concrete / asphalt debris pieces.	3										
		6	>4.5	16								
8		P										
10												
4												
Gray / brown silty clay loam till with heavy concrete debris.	6	>4.5	16									
	10	P										
	10											
690.60												
10-12 ft had concrete debris. No recovery.	-10											
	21											
	14											
688.10												
Black silty clay loam topsoil. Virgin ground.	5											
	6	2.0-4.0	14									
	6	P										
686.60												
Brown and gray silty clay loess. Virgin ground.	6											
	10											
	686.10											
End of Boring												
	-15											

The Unconfined Compressive Strength (UCS) Failure Mode is indicated by (B-Bulge, S-Shear, P-Penetrometer)
 The SPT (N value) is the sum of the last two blow values in each sampling zone (AASHTO T206)
 BBS, form 137 (Rev. 8-99)



Illinois Department of Transportation
Division of Highways
Illinois Department of Transportation

SOIL BORING LOG

Date 8/5/10

ROUTE I-57 (FAI 57) DESCRIPTION I-57 & IL 50 Interchange Lighting LOGGED BY Larry Myers

SECTION (46-2)HL, HBR, VBR LOCATION SW 1/4, SEC. 16, TWP. 31N, RNG. 12E,
Latitude, Longitude

COUNTY Kankakee DRILLING METHOD Hollow Stem Auger HAMMER TYPE CME Automatic

STRUCT. NO. Tower #05
Station 319+55.89

BORING NO. 28
Station 319+46
Offset 250.0 ft Lt.
Ground Surface Elev. 691.19 ft

SOIL DESCRIPTION	DEPTH (ft)	BLOW COUNT (/6")	UCS (tsf)	MOISTURE (%)	DEPTH (ft)	BLOW COUNT (/6")	UCS (tsf)	MOISTURE (%)
Augered White Shoulder Stone, Black Silty Clay Loam Fill	688.69				6			
					7	4.1	19	
					11	S		
Stiff to Very Stiff Black Silty Clay Loam Fill	686.69	3			56			
		3	2.0	26	100/4			13
		4	P		667.19			
Stiff Gray & Brown Silty Clay	683.69							
		3						
		3	2.0	25				
		3	P					
Very Stiff to Stiff Brown & Gray Silty Clay Loam Till	679.19	2						
		2	2.1	20				
		2	B					
Hard Brown & Gray Silty Clay Loam Till		1						
		1	1.0	40				
		1	P					
		9						
		13	>4.5	23				
		18	P					
		2						
		11	5.4	19				
		14	S					
		4						
		7	4.4	21				
		12	S					

SOIL BORING I-57 & IL 50 KANKAKEE (LIGHT TOWERS) IGRU IL DOT.GDT KM47

The Unconfined Compressive Strength (UCS) Failure Mode is indicated by (B-Bulge, S-Shear, P-Penetrometer)
The SPT (N value) is the sum of the last two blow values in each sampling zone (AASHTO T206)
BBS, form 137 (Rev. 8-99)

FILE NAME =	USER NAME = braboypc	DESIGNED -	REVISED -	STATE OF ILLINOIS DEPARTMENT OF TRANSPORTATION	BORING LOGS, IL50/I-57 INTERCHANGE	F.A. RTÉ.	SECTION	COUNTY	TOTAL SHEETS	SHEET NO.
cc:\pw_work\pwidot\braboypc\0534117\1D3xxxxx-shd-deta.dgn	DRAWN -	REVISED -	55&57			(53-5HB, 5HB-3)HL & (46-2HB)HL	*	23	18	
\$MODELNAME\$	PLOT SCALE = 100.0000' / in.	CHECKED -	REVISED -			CONTRACT NO. 66H99				
	PLOT DATE = 10/20/2017	DATE -	REVISED -			SCALE: _____	SHEET _ OF _ SHEETS	STA. _____ TO STA. _____	ILLINOIS	FED. AID PROJECT

*LIVINGSTON & KANKAKEE



Illinois Department of Transportation
Division of Highways
Illinois Department of Transportation

SOIL BORING LOG

Page 1 of 1

Date 10/12/17

ROUTE I-55 / IL 116 DESCRIPTION I-55 at IL 116 in Pontiac Highway Lighting LOGGED BY Larry Myers
SECTION (53-5HB,5HB-3)HL LOCATION NE 1/4, SEC. 29, TWP. 28N, RNG. 5E, 3rd PM,
Latitude 40.8733, Longitude -88.669022
COUNTY Livingston DRILLING METHOD Hollow Stem Auger HAMMER TYPE CME Automatic

STRUCT. NO. Station	D E P T H ft	B L O W S (ft)	U C S Qu (tsf)	M O I S T (%)	Surface Water Elev. _____ ft				D E P T H ft	B L O W S (ft)	U C S Qu (tsf)	M O I S T (%)
					Stream Bed Elev. _____ ft							
BORING NO. 1 Station 56+85 Offset 71.0 ft RL Ground Surface Elev. 667.12 ft					Very Stiff to Hard Gray & Brown Silty Clay Loam Till Fill (continued)							
Augered Gravel & Gray Silty Loam Fill												
Very Stiff Gray Silty Clay Loam & Silty Loam Till Fill												
Hard Gray & Brown Silty Clay Loam Till Fill with some Large Gravel Pieces												
Very Stiff to Hard Gray & Brown Silty Clay Loam Till Fill												

The Unconfined Compressive Strength (UCS) Failure Mode is indicated by (B-Bulge, S-Shear, P-Penetrometer)
The SPT (N value) is the sum of the last two blow values in each sampling zone (AASHTO T206)

BBS, form 137 (Rev. 8-99)



Illinois Department of Transportation
Division of Highways
Illinois Department of Transportation

SOIL BORING LOG

Page 1 of 1

Date 10/12/17

ROUTE I-55 / IL 116 DESCRIPTION I-55 at IL 116 in Pontiac Highway Lighting LOGGED BY Larry Myers
SECTION (53-5HB,5HB-3)HL LOCATION SW 1/4, SEC. 20, TWP. 28N, RNG. 5E, 3rd PM,
Latitude 40.873627, Longitude -88.673736
COUNTY Livingston DRILLING METHOD Hollow Stem Auger HAMMER TYPE CME Automatic

STRUCT. NO. Station	D E P T H ft	B L O W S (ft)	U C S Qu (tsf)	M O I S T (%)	Surface Water Elev. _____ ft				D E P T H ft	B L O W S (ft)	U C S Qu (tsf)	M O I S T (%)
					Stream Bed Elev. _____ ft							
BORING NO. 2 Station 43+46 Offset 62.0 ft RL Ground Surface Elev. 667.13 ft					Augered Black Silty Clay Loam Fill, Gray Silty Clay Loam Fill							
Very Stiff Gray Silty Loam / Silty Clay Loam Till Fill												
Hard Gray & Brown Silty Clay Loam Till Fill - some Larger Rocks in Fill												
Very Stiff Brown & Gray Silty Clay Loam Till												
End of Boring												

The Unconfined Compressive Strength (UCS) Failure Mode is indicated by (B-Bulge, S-Shear, P-Penetrometer)
The SPT (N value) is the sum of the last two blow values in each sampling zone (AASHTO T206)

BBS, form 137 (Rev. 8-99)

SOIL BORING IL 116 AND I-55 INTERCHANGE IN PONTIAC GPJ L DOT.GDT 10/18/17

FILE NAME =	USER NAME = braboypc	DESIGNED -	REVISED -
cc:\pw_work\pwidot\braboypc\0534117\03xxxxx-shl-detail.dgn		DRAWN -	REVISED -
	PLOT SCALE = 100.0000' / in.	CHECKED -	REVISED -
	PLOT DATE = 10/20/2017	DATE -	REVISED -

STATE OF ILLINOIS
DEPARTMENT OF TRANSPORTATION

BORING LOGS, IL 116/I-55 INTERCHANGE

SCALE: _____ SHEET _____ OF _____ SHEETS STA. _____ TO STA. _____

*LIVINGSTON & KANKAKEE				
F.A. RTE.	SECTION	COUNTY	TOTAL SHEETS	SHEET NO.
55857	(53-5HB,5HB-3)HL & (46-2HB)HL		23	19
CONTRACT NO. 66H99				
ILLINOIS		FED. AID PROJECT		

ROUTE (IL-23)
SECTION 53-5
DISTRICT 3
COUNTY LIVINGSTON

ILLINOIS DEPARTMENT OF TRANSPORTATION
LUMINAIRE PERFORMANCE TABLE
Freeway Class B --LIGHT POLE

GIVEN CONDITIONS		
ROADWAY DATA	Lane Width	15 ft
	Number of Lanes (in each direction)	1
	Median Width	7 ft
	I.E.S. Surface Classification	R3
	Q-Zero Value	.07
LIGHT POLE DATA	Mounting Height	45 ft
	Mast Arm Length	6 ft
	Pole Set-Back From Edge of Pavement	15 ft
LUMINAIRE DATA	Luminaire Type	LED
	I.E.S. Vertical Distribution	Medium
	BUG Rating	U = 0
	I.E.S. Lateral Distribution	Type II
	Lumen Depreciation	0.90
	Dirt Depreciation	0.80
	Equipment Factor	0.95
	Total Light Loss Factor	0.684
LAYOUT DATA	Spacing	260 ft
	Configuration	One Side

- NOTES:**
- Variations from the above specified I.E.S. distribution pattern may be requested and acceptance of variations will be subject to review by the Engineer based on how well the performance requirements are met.
 - A Lumen Depreciation value greater than 0.90 for LED light sources shall be based upon I.E.S. LM-80 or I.E.S. LM-84 and I.E.S. TM-21 test reports.

PERFORMANCE REQUIREMENTS		
NOTE: These performance requirements shall be the minimum acceptable standards of photometric performance for the luminaire, based on the given conditions listed above.		
ILLUMINANCE	Average Illuminance, E_{AVE}	0.7 fc
	Uniformity Ratio, E_{AVE}/E_{MIN}	4.0:1
	Minimum Illuminance E_{MIN}	0.3 fc

ROUTE (I 55)
SECTION 53-5
DISTRICT 3
COUNTY LIVINGSTON

ILLINOIS DEPARTMENT OF TRANSPORTATION
LUMINAIRE PERFORMANCE TABLE
Freeway Class B --LIGHT TOWER

GIVEN CONDITIONS		
ROADWAY DATA	Lane Width	12 ft
	Number of Lanes (in each direction)	2
	Median Width	90 ft
	I.E.S. Surface Classification	R3
	Q-Zero Value	.07
LIGHT POLE DATA	Mounting Height	100 ft
	Mast Arm Length	N/A
	Pole Set-Back From Edge of Pavement	45 ft
LUMINAIRE DATA	Luminaire Type	LED
	I.E.S. Vertical Distribution	Medium
	BUG Rating	U = 0
	I.E.S. Lateral Distribution	Type II
	Lumen Depreciation	0.90
	Dirt Depreciation	0.80
	Equipment Factor	0.95
Total Light Loss Factor	0.684	
LAYOUT DATA	Spacing	600 ft
	Configuration	Median Mounted

- NOTES:**
- Variations from the above specified I.E.S. distribution pattern may be requested and acceptance of variations will be subject to review by the Engineer based on how well the performance requirements are met.
 - A Lumen Depreciation value greater than 0.90 for LED light sources shall be based upon I.E.S. LM-80 or I.E.S. LM-84 and I.E.S. TM-21 test reports.

PERFORMANCE REQUIREMENTS		
NOTE: These performance requirements shall be the minimum acceptable standards of photometric performance for the luminaire, based on the given conditions listed above.		
ILLUMINANCE	Average Illuminance, E_{AVE}	1.2 fc
	Uniformity Ratio, E_{AVE}/E_{MIN}	4.0:1
	Minimum Illuminance E_{MIN}	0.3 fc

*LIVINGSTON & KANKAKEE

ROUTE (I 55)
SECTION 53-5
DISTRICT 3
COUNTY LIVINGSTON

ILLINOIS DEPARTMENT OF TRANSPORTATION
LUMINAIRE PERFORMANCE TABLE
Freeway Class B --LIGHT TOWER

GIVEN CONDITIONS

ROADWAY DATA	Lane Width	12 ft
	Number of Lanes (in each direction)	2
	Median Width	90 ft
	I.E.S. Surface Classification	R3
	Q-Zero Value	.07
LIGHT POLE DATA	Mounting Height	100 ft
	Mast Arm Length	N/A
	Pole Set-Back From Edge of Pavement	45 ft
LUMINAIRE DATA	Luminaire Type	LED
	I.E.S. Vertical Distribution	Medium
	BUG Rating	U = 0
	I.E.S. Lateral Distribution	Type II
	Lumen Depreciation	0.90
	Dirt Depreciation	0.80
	Equipment Factor	0.95
LAYOUT DATA	Total Light Loss Factor	0.684
	Spacing Configuration	600 ft Median Mounted

- NOTES:**
- Variations from the above specified I.E.S. distribution pattern may be requested and acceptance of variations will be subject to review by the Engineer based on how well the performance requirements are met.
 - A Lumen Depreciation value greater than 0.90 for LED light sources shall be based upon I.E.S. LM-80 or I.E.S. LM-84 and I.E.S. TM-21 test reports.

PERFORMANCE REQUIREMENTS

NOTE: These performance requirements shall be the minimum acceptable standards of photometric performance for the luminaire, based on the given conditions listed above.

ILLUMINANCE	Average Illuminance, E_{AVE}	1.2 fc
	Uniformity Ratio, E_{AVE}/E_{MIN}	4.0:1
	Minimum Illuminance E_{MIN}	0.3 fc

SECTION 53-5
DISTRICT 3
COUNTY LIVINGSTON

ILLINOIS DEPARTMENT OF TRANSPORTATION
LUMINAIRE PERFORMANCE TABLE
Freeway Class B --LIGHT POLE

GIVEN CONDITIONS

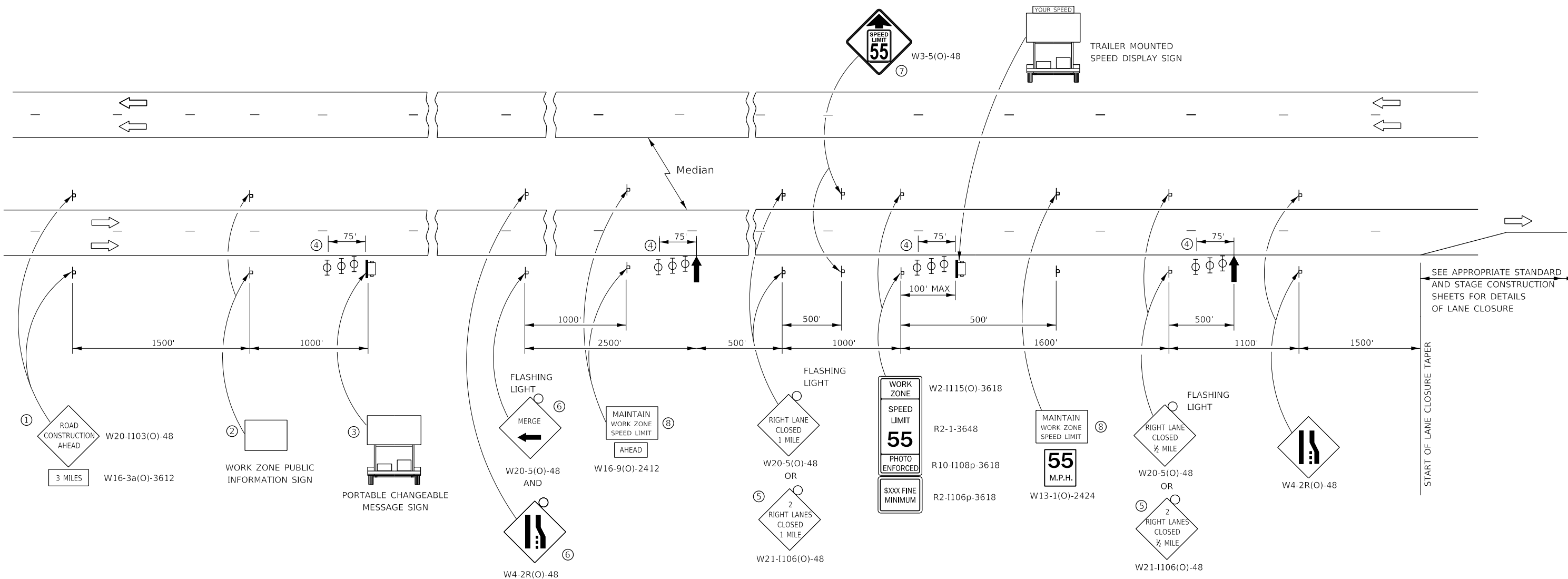
ROADWAY DATA	Lane Width	13 ft
	Number of Lanes (in each direction)	2
	Median Width	18 ft
	I.E.S. Surface Classification	R3
	Q-Zero Value	.07
LIGHT POLE DATA	Mounting Height	45 ft
	Mast Arm Length	6 ft
	Pole Set-Back From Edge of Pavement	15 ft
LUMINAIRE DATA	Luminaire Type	LED
	I.E.S. Vertical Distribution	Medium
	BUG Rating	U = 0
	I.E.S. Lateral Distribution	Type II
	Lumen Depreciation	0.90
	Dirt Depreciation	0.80
	Equipment Factor	0.95
LAYOUT DATA	Total Light Loss Factor	0.684
	Spacing Configuration	225 ft One Side

- NOTES:**
- Variations from the above specified I.E.S. distribution pattern may be requested and acceptance of variations will be subject to review by the Engineer based on how well the performance requirements are met.
 - A Lumen Depreciation value greater than 0.90 for LED light sources shall be based upon I.E.S. LM-80 or I.E.S. LM-84 and I.E.S. TM-21 test reports.

PERFORMANCE REQUIREMENTS

NOTE: These performance requirements shall be the minimum acceptable standards of photometric performance for the luminaire, based on the given conditions listed above.

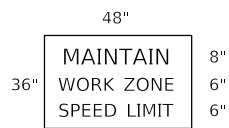
ILLUMINANCE	Average Illuminance, E_{AVE}	0.7 fc
	Uniformity Ratio, E_{AVE}/E_{MIN}	4.0:1
	Minimum Illuminance E_{MIN}	0.3 fc



SEE APPROPRIATE STANDARD AND STAGE CONSTRUCTION SHEETS FOR DETAILS OF LANE CLOSURE

- ① THE ROAD CONSTRUCTION AHEAD SIGN SHALL BE LOCATED 3 MILES IN ADVANCE OF THE PROJECT LIMITS.
- ② THE MESSAGE AND SIZE OF THE WORK ZONE PUBLIC INFORMATION SIGN SHALL BE AS SPECIFIED BY THE DEPARTMENT.
- ③ TO BE PLACED IN THE MEDIAN WHEN FEASIBLE. THE MESSAGE BOARD SHALL BE USED TO DISPLAY STATUS OF LANES WITHIN THE PROJECT. THE PRIMARY MESSAGES SHALL BE:
"RIGHT LANE CLOSED" / " x MILES AHEAD"
"LEFT LANE CLOSED" / " x MILES AHEAD"
"ALL LANES OPEN"
- ④ THREE, TYPE II BARRICADES, DRUMS, OR VERTICAL BARRICADES AT 25' CENTERS.
- ⑤ THIS SIGN SHALL BE USED WHEN 2 LANES ARE CLOSED.
- ⑥ WHEN THE LEFT LANE IS CLOSED, SWITCH THESE TWO SIGNS AND THE DIRECTION OF THE MERGE ARROW.
- ⑦ THIS SIGN SHALL ONLY BE USED IF THE EXISTING SPEED LIMIT IS GREATER THAN 65 MPH.

⑧ 48"x36" FLUORESCENT ORANGE SIGN WITH BLACK LETTERS.



- ↑ ARROW BOARD
- ☐ PORTABLE CHANGEABLE MESSAGE SIGN
- ⊥ SIGN
- ⊕ TYPE II BARRICADE, DRUM, OR VERTICAL BARRICADE WITH MONODIRECTIONAL FLASHING LIGHT

GENERAL NOTE:

THIS STANDARD IS USED WHERE AT ANY TIME A LANE IS CLOSED ON A FREEWAY/EXPRESSWAY.

WHEN THE LEFT LANE IS CLOSED, LEFT LANE CLOSED SIGNS SHALL BE SUBSTITUTED FOR THE RIGHT LANE CLOSED SIGNS.

THE FIRST TWO SIGNS AND THE MESSAGE BOARD ARE STATIONARY. THE OTHER SIGNS AND ARROWBOARDS SHALL BE MOVED AS NECESSARY TO MAINTAIN THE REQUIRED DISTANCE FROM THE START OF THE LANE CLOSURE TAPER(S).

SEE SPECIAL PROVISIONS.

ALL DIMENSIONS ARE IN INCHES UNLESS OTHERWISE SHOWN.

MODEL: 4100\DELNAME15
FILE NAME: 5316\work\std701400\braboypc\0531117\03xxx-std701400.dgn

USER NAME = braboypc	DESIGNED - _____	REVISED - _____
	DRAWN - _____	REVISED - _____
PLOT SCALE = 100.0000' / in.	CHECKED - _____	REVISED - _____
PLOT DATE = 10/20/2017	DATE - _____	REVISED - _____

**STATE OF ILLINOIS
DEPARTMENT OF TRANSPORTATION**

STANDARD 701400 (SPECIAL)

SCALE: _____ SHEET ____ OF ____ SHEETS STA. _____ TO STA. _____

*LIVINGSTON & KANKAKEE				
F.A.I. RTE.	SECTION	COUNTY	TOTAL SHEETS	SHEET NO.
55&57	(53-5HB, 5HB-3)HL & (46-2HB)HL	*	23	23
CONTRACT NO. 66H99				
ILLINOIS FED. AID PROJECT				