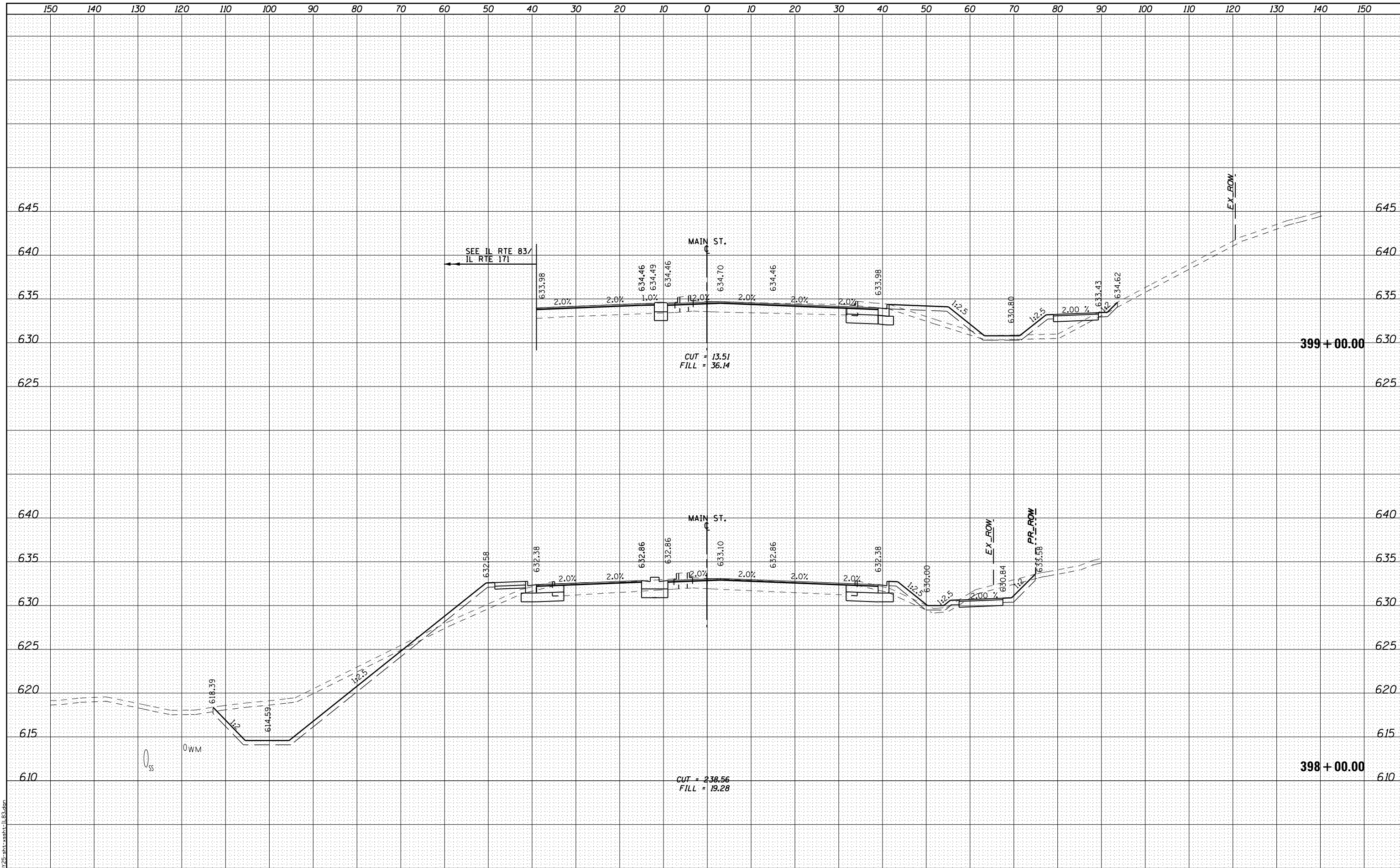


DATE	
BY	
FINAL SURVEY	SURVEYED
NOTE BOOK	PLOTTED
NO.	TEMPLATE
	AREAS CHECKED

DATE	
BY	
ORIGINAL SURVEY	SURVEYED
NOTE BOOK	PLOTTED
NO.	TEMPLATE
	AREAS CHECKED



FILE NAME = 0160725-shr-xsh-t-IL83.dgn

RME Rubinos & Mesa Engineers, Inc.
 200 S. Michigan Avenue, Suite 1500, Chicago, IL 60604-2462

USER NAME =	v Alvarez
PLOT SCALE =	20.0000' / in.
PLOT DATE =	8/19/2017

DESIGNED -	FA
DRAWN -	PK
CHECKED -	MF
DATE -	2/1/2017

REVISED -	
REVISED -	
REVISED -	
REVISED -	

**STATE OF ILLINOIS
DEPARTMENT OF TRANSPORTATION**

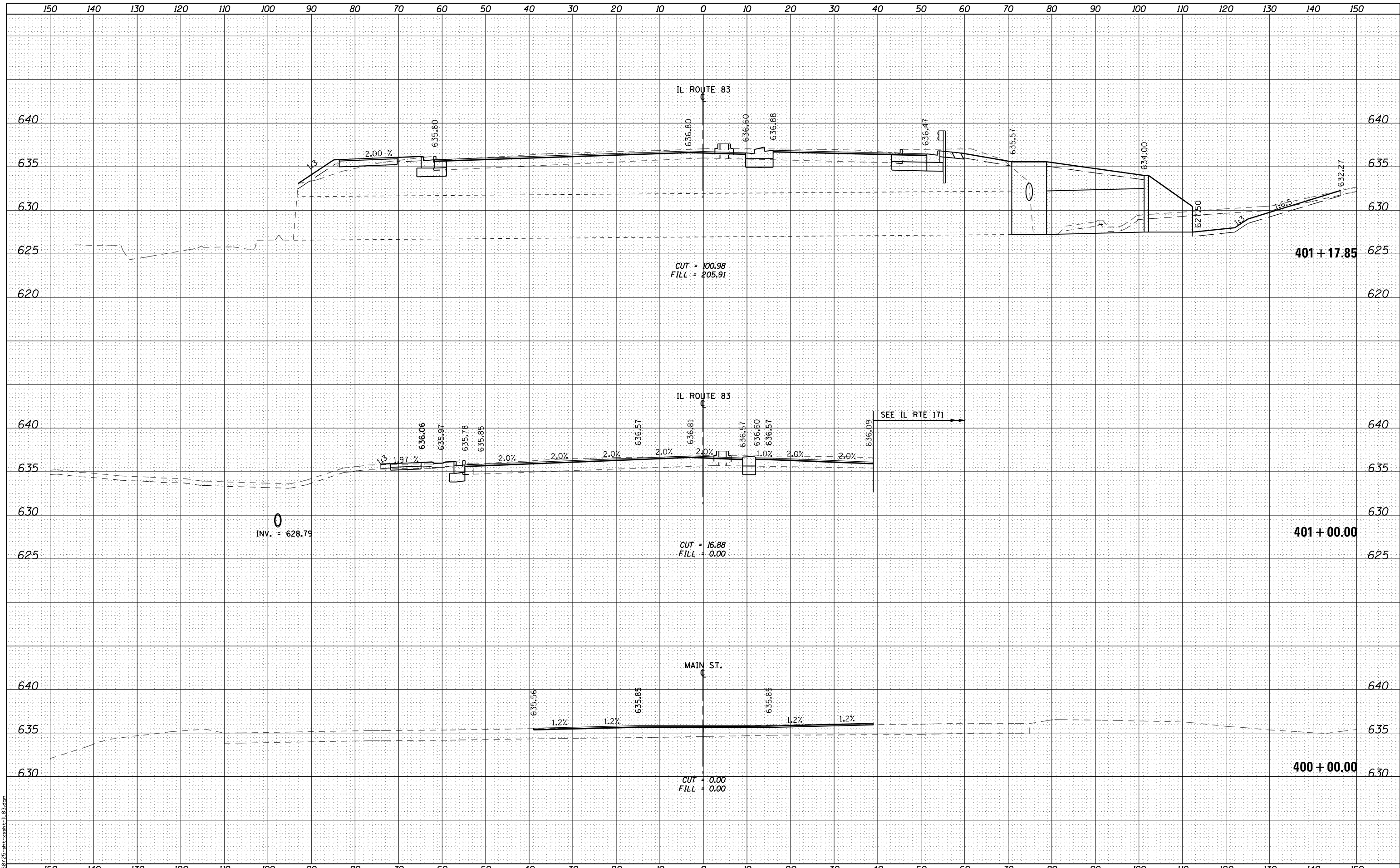
**IL ROUTE 83 AT IL ROUTE 171 (ARCHER AVE)
CROSS SECTION - ILLINOIS ROUTE 83**

SCALE: 1" = 10' (H) / 1" = 5' (V) | SHEET NO. 8 OF 16 SHEETS | STA. 398+00.00 TO STA. 399+00.00

F.A.P. RTE.	SECTION	COUNTY	TOTAL SHEETS	SHEET NO.
344	3114-N(14)	COOK	225	201
FED. ROAD DIST. NO.			ILLINOIS FED. AID PROJECT	
			CONTRACT NO. 60Y25	

DATE	
BY	
ORIGINAL SURVEY	
SURVEYED	
PLOTTED	
TEMPLATE	
NOTE BOOK	
AREAS CHECKED	
NO.	

DATE	
BY	
ORIGINAL SURVEY	
SURVEYED	
PLOTTED	
TEMPLATE	
NOTE BOOK	
AREAS CHECKED	
NO.	



FILE NAME = D:\6725-ahh-xshh-1183.dgn

RME Rubinos & Mesa Engineers, Inc.
 200 S. Michigan Avenue, Suite 1500, Chicago, IL 60604-2462

USER NAME = valvarez
PLOT SCALE = 20.0000' / in.
PLOT DATE = 8/19/2017

DESIGNED - FA
DRAWN - PK
CHECKED - MF
DATE - 2/1/2017

REVISED -
REVISED -
REVISED -
REVISED -

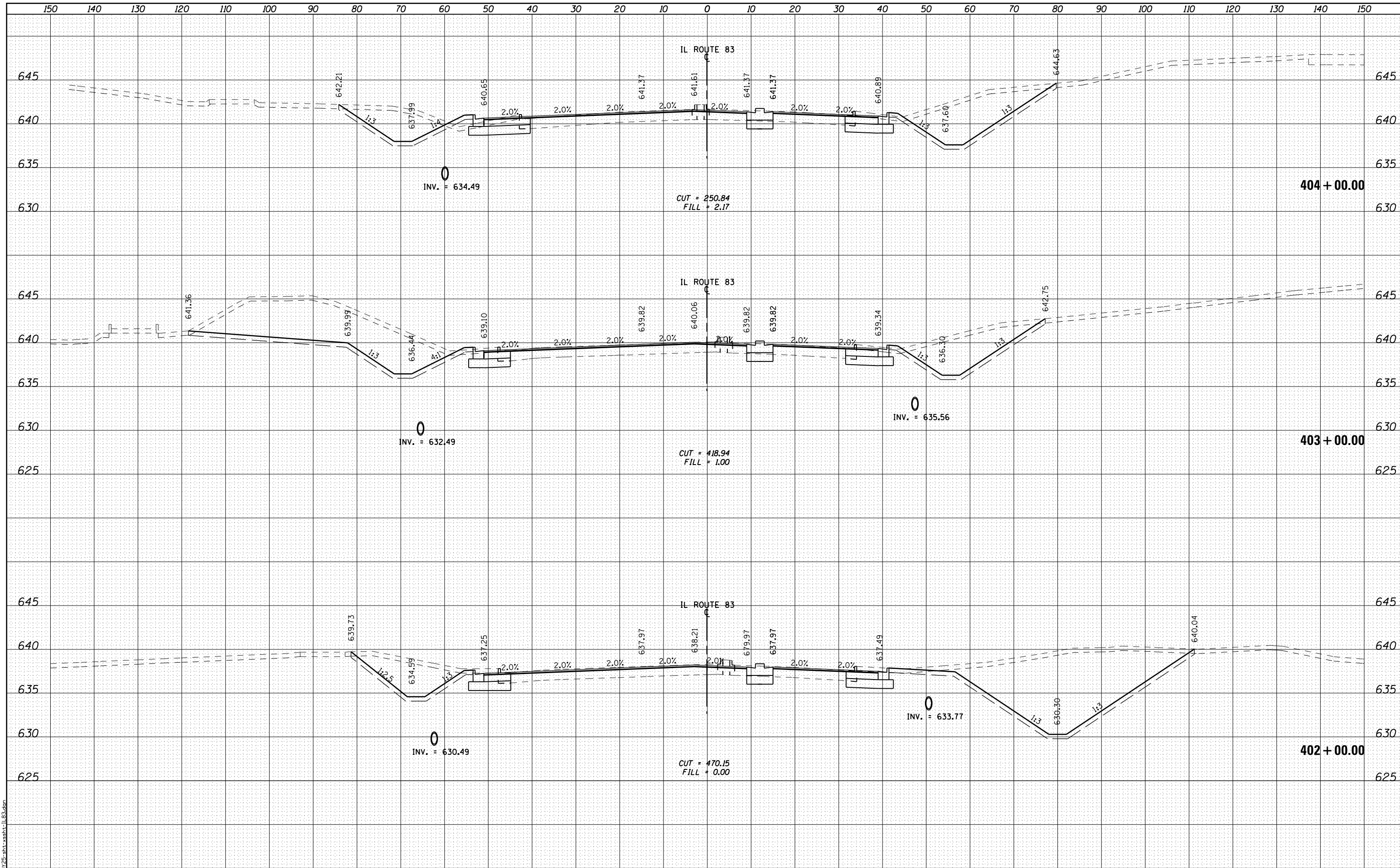
**STATE OF ILLINOIS
 DEPARTMENT OF TRANSPORTATION**

IL ROUTE 83 AT IL ROUTE 171 (ARCHER AVE) CROSS SECTION - ILLINOIS ROUTE 83	
SCALE: 1" = 10' (H) / 1" = 5' (V)	SHEET NO. 9 OF 16 SHEETS
STA. 400+00.00 TO STA. 401+17.85	

F.A.P. RTE. 344	SECTION 3114-N(14)	COUNTY COOK	TOTAL SHEETS 225	SHEET NO. 202
FED. ROAD DIST. NO.		ILLINOIS FED. AID PROJECT		
		CONTRACT NO. 60Y25		

DATE	
BY	
FINAL SURVEY	SURVEYED
NOTE BOOK	PLOTTED
NO.	TEMPLATE
	AREAS
	CHECKED

DATE	
BY	
ORIGINAL SURVEY	SURVEYED
NOTE BOOK	PLOTTED
NO.	TEMPLATE
	AREAS
	CHECKED



FILE NAME = D:\60725-ahh-xshh-1183.dgn



USER NAME = valvarez
 PLOT SCALE = 20.0000' / in.
 PLOT DATE = 8/19/2017

DESIGNED - FA
 DRAWN - PK
 CHECKED - MF
 DATE - 2/1/2017

REVISED -
 REVISED -
 REVISED -
 REVISED -

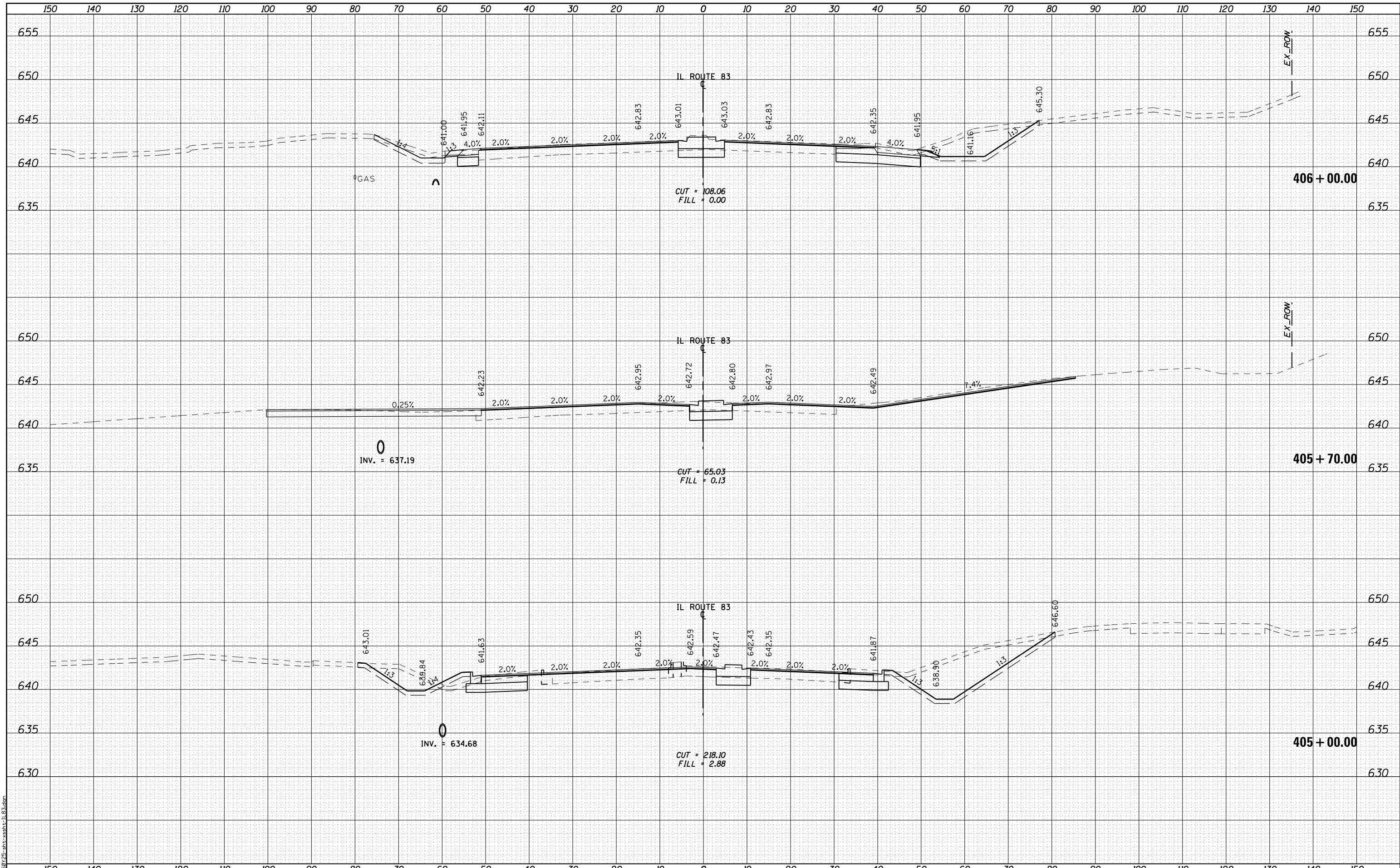
**STATE OF ILLINOIS
 DEPARTMENT OF TRANSPORTATION**

**IL ROUTE 83 AT IL ROUTE 171 (ARCHER AVE)
 CROSS SECTION - ILLINOIS ROUTE 83**
 SCALE: 1" = 10' (H) 1" = 5' (V) SHEET NO. 10 OF 16 SHEETS STA. 402+00.00 TO STA. 404+00.00

F.A.P. RTE.	SECTION	COUNTY	TOTAL SHEETS	SHEET NO.
344	3114-N(14)	COOK	225	203
CONTRACT NO. 60Y25			ILLINOIS FED. AID PROJECT	

DATE	
BY	
ORIGINAL SURVEY	SURVEYED
NOTE BOOK	PLOTTED
NO.	TEMPLATE
	AREAS CHECKED
	AREAS CHECKED

DATE	
BY	
ORIGINAL SURVEY	SURVEYED
NOTE BOOK	PLOTTED
NO.	TEMPLATE
	AREAS CHECKED
	AREAS CHECKED



FILE NAME = D:\60725-ahh-xshh-1183.dgn

RME Rubinos & Mesa Engineers, Inc.
 200 S. Michigan Avenue, Suite 1500, Chicago, IL 60604-2462

USER NAME = vaivarez	DESIGNED - FA	REVISED -
	DRAWN - PK	REVISED -
PLOT SCALE = 20.0000' / in.	CHECKED - MF	REVISED -
PLOT DATE = 8/19/2017	DATE - 2/1/2017	REVISED -

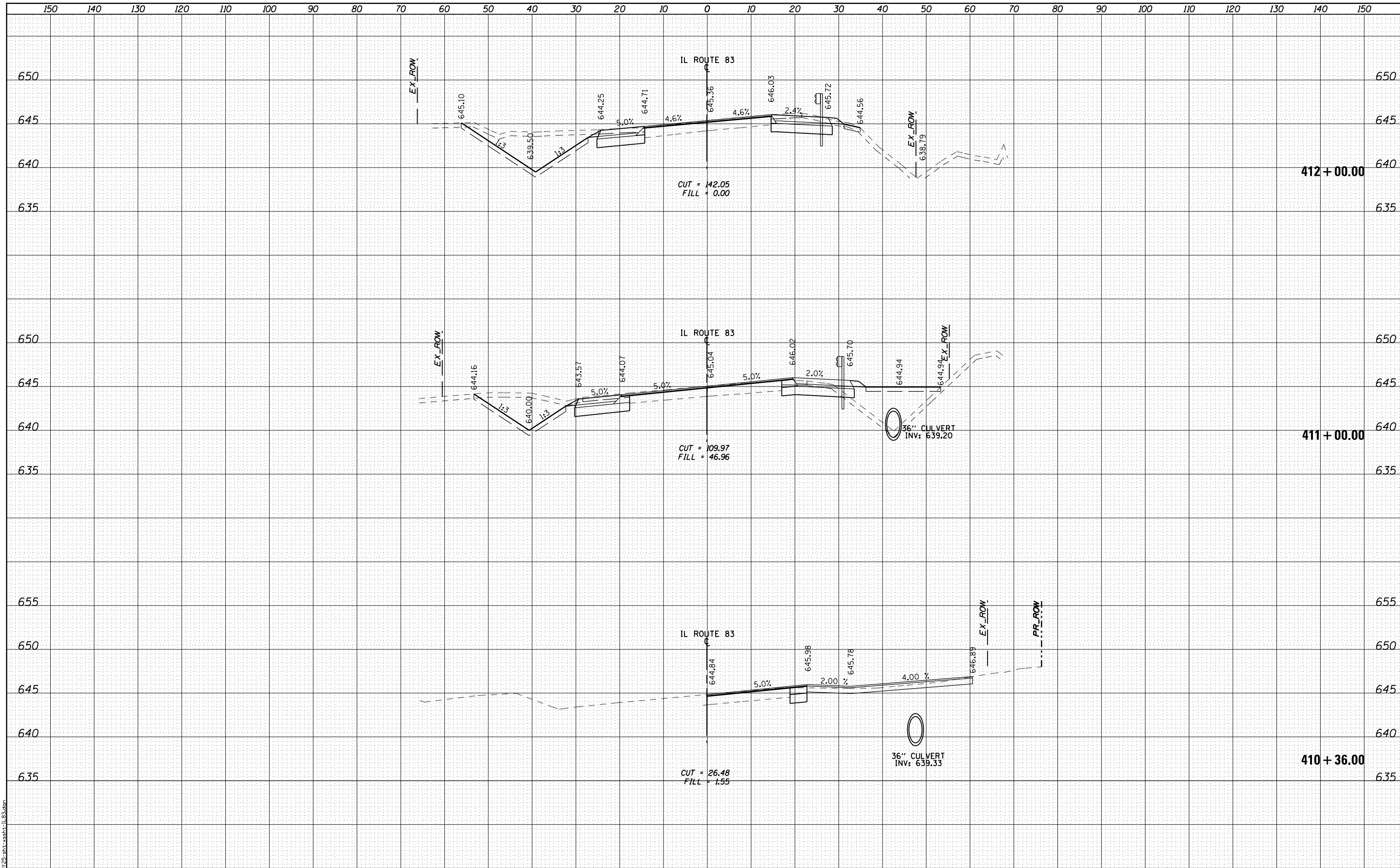
**STATE OF ILLINOIS
 DEPARTMENT OF TRANSPORTATION**

IL ROUTE 83 AT IL ROUTE 171 (ARCHER AVE) CROSS SECTION - ILLINOIS ROUTE 83	
SCALE: 1" = 10' (H) 1" = 5' (V)	SHEET NO. 11 OF 16 SHEETS
STA. 405+00.00 TO STA. 406+00.00	TOTAL SHEETS 225
	SHEET NO. 204

F.A.P. RTE. 344	SECTION 3114-N(14)	COUNTY COOK	TOTAL SHEETS 225	SHEET NO. 204
FED. ROAD DIST. NO.		ILLINOIS FED. AID PROJECT		
		CONTRACT NO. 60Y25		

DATE	
BY	
ORIGINAL SURVEY	
SURVEYED	
PLOTTED	
TEMPLATE	
AREAS	
CHECKED	
NO.	

DATE	
BY	
ORIGINAL SURVEY	
SURVEYED	
PLOTTED	
TEMPLATE	
AREAS	
CHECKED	
NO.	



FILE NAME = 0160725-ahc-xsh1-1183.dgn

RME Rubinos & Messia Engineers, Inc.
 200 S. Michigan Avenue, Suite 1500, Chicago, IL 60604-2462

USER NAME = valvarez	DESIGNED - FA	REVISIED -
	DRAWN - PK	REVISIED -
PLOT SCALE = 20.0000' / in.	CHECKED - MF	REVISIED -
PLOT DATE = 8/19/2017	DATE - 2/1/2017	REVISIED -

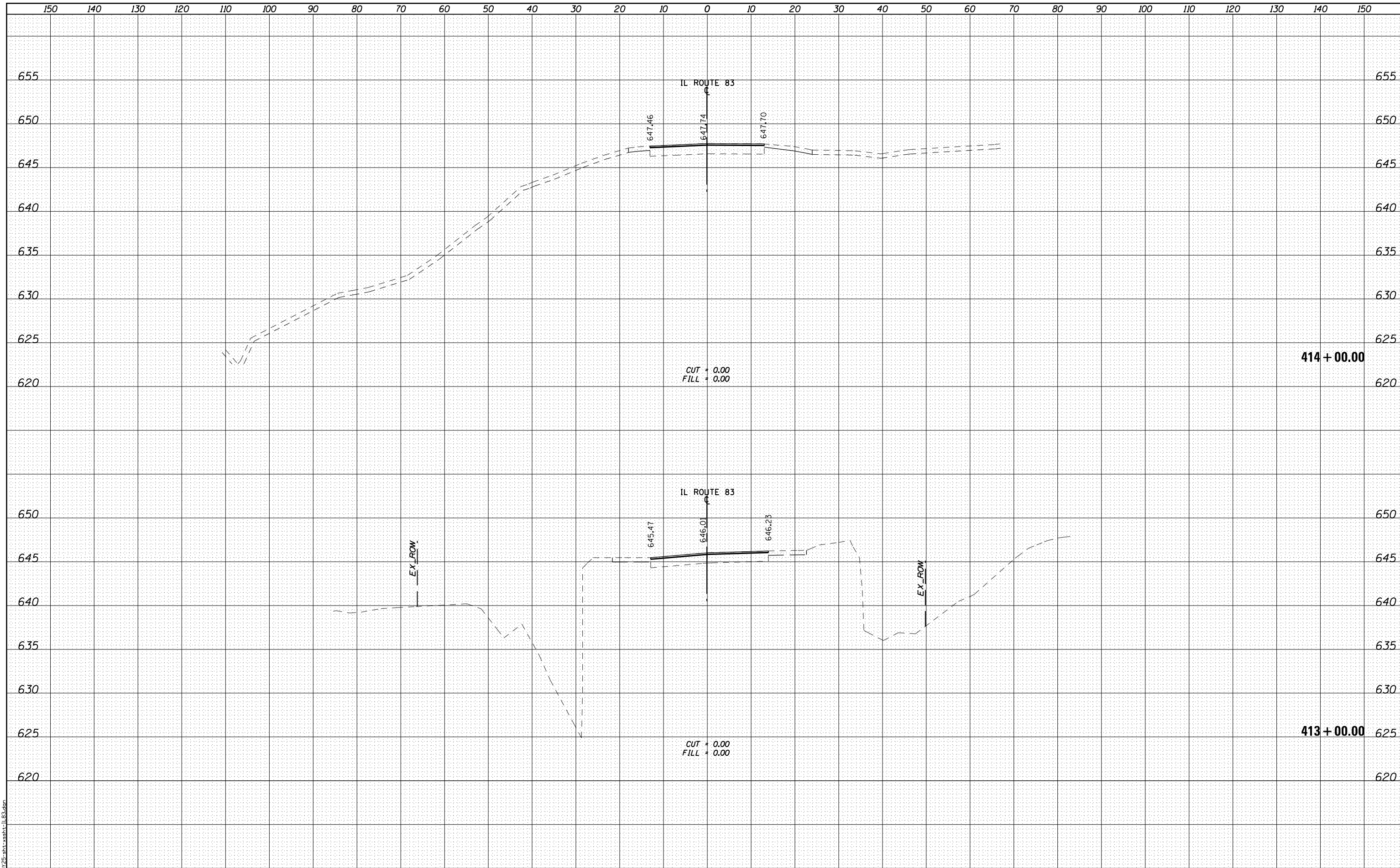
**STATE OF ILLINOIS
 DEPARTMENT OF TRANSPORTATION**

IL ROUTE 83 AT IL ROUTE 171 (ARCHER AVE) CROSS SECTION - ILLINOIS ROUTE 83	
SCALE: 1" = 10' (H) 1" = 5' (V)	SHEET NO. 15 OF 16 SHEETS
STA. 410+36.00 TO STA. 412+00.00	

F.A.P. RTE. 344	SECTION 3114-N(14)	COUNTY COOK	TOTAL SHEETS 225	SHEET NO. 208
FED. ROAD DIST. NO. ILLINOIS FED. AID PROJECT			CONTRACT NO. 60Y25	

DATE	
BY	
FINAL SURVEY	SURVEYED
NOTE BOOK	PLOTTED
NO.	TEMPLATE
	AREAS CHECKED
	AREAS CHECKED

DATE	
BY	
ORIGINAL SURVEY	SURVEYED
NOTE BOOK	PLOTTED
NO.	TEMPLATE
	AREAS CHECKED
	AREAS CHECKED



FILE NAME = 0160725-shr-xsh-1183.dgn

RME Rubinos & Mesa Engineers, Inc.
 200 S. Michigan Avenue, Suite 1500, Chicago, IL 60604-2462

USER NAME = VALVAREZ	DESIGNED - FA	REVISOR -
PLOT SCALE = 20.0000' / in.	DRAWN - PK	REVISOR -
PLOT DATE = 8/19/2017	CHECKED - MF	REVISOR -
	DATE - 2/1/2017	REVISOR -

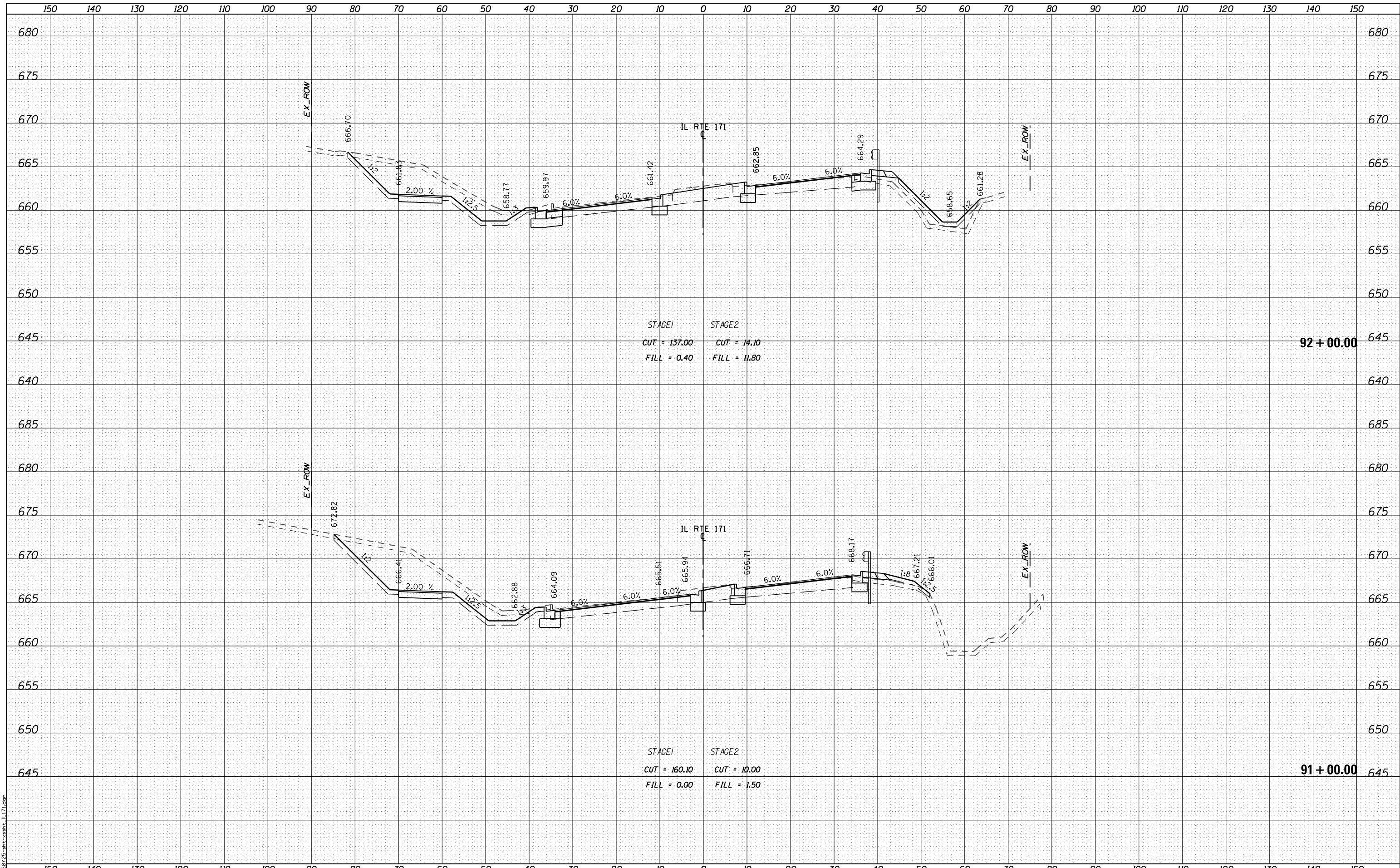
**STATE OF ILLINOIS
DEPARTMENT OF TRANSPORTATION**

IL ROUTE 83 AT IL ROUTE 171 (ARCHER AVE) CROSS SECTION - ILLINOIS ROUTE 83	
SCALE: 1" = 10' (H) 1" = 5' (V)	SHEET NO. 16 OF 16 SHEETS
STA. 413+00.00	TO STA. 414+00.00

F.A.P. RTE.	SECTION	COUNTY	TOTAL SHEETS	SHEET NO.
344	3114-N(14)	COOK	225	209
CONTRACT NO. 60Y25				
FED. ROAD DIST. NO.		ILLINOIS FED. AID PROJECT		

DATE	
BY	
FINISHED	
PLOTTED	
TEMPLATE	
AREAS	
CHECKED	
NO.	

DATE	
BY	
ORIGINAL	
SURVEY	
PLOTTED	
TEMPLATE	
AREAS	
CHECKED	
NO.	



FILE NAME = 0160725-ah-xx-xx-11171.dgn



USER NAME = VALVAREZ	DESIGNED - FA	REVISED -
	DRAWN - PK	REVISED -
PLOT SCALE = 20.0000' / in.	CHECKED - MF	REVISED -
PLOT DATE = 8/19/2017	DATE = 2/1/2017	REVISED -

**STATE OF ILLINOIS
DEPARTMENT OF TRANSPORTATION**

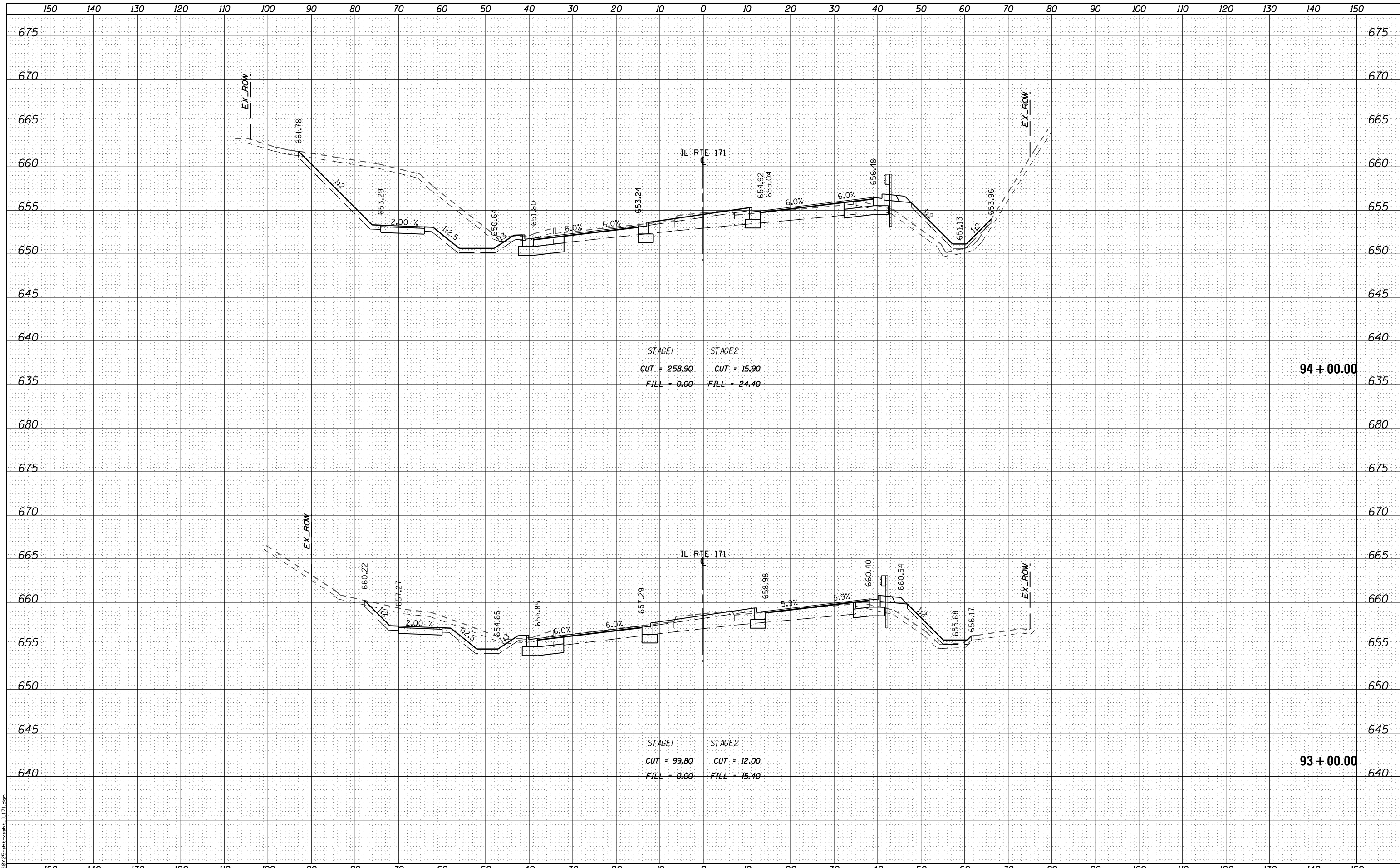
**IL ROUTE 83 AT IL ROUTE 171 (ARCHER AVE)
CROSS SECTION - ILLINOIS ROUTE 171**

SCALE: 1" = 10' (H)
1" = 5' (V) SHEET NO. 3 OF 14 SHEETS STA. 91+00.00 TO STA. 92+00.00

F.A.P. RTE.	SECTION	COUNTY	TOTAL SHEETS	SHEET NO.
344	3114-N(14)	COOK	225	212
CONTRACT NO. 60Y25				
FED. ROAD DIST. NO.		ILLINOIS FED. AID PROJECT		

DATE	
BY	
SURVEYED	
PLOTTED	
TEMPLATE	
AREAS	
CHECKED	
NO.	

DATE	
BY	
SURVEYED	
PLOTTED	
TEMPLATE	
AREAS	
CHECKED	
NO.	



STAGE1 STAGE2
 CUT = 258.90 CUT = 15.90
 FILL = 0.00 FILL = 24.40

94 + 00.00

STAGE1 STAGE2
 CUT = 99.80 CUT = 12.00
 FILL = 0.00 FILL = 15.40

93 + 00.00

FILE NAME = D:\60725-arch-xsect-1171.dgn



USER NAME = VALVAREZ
 PLOT SCALE = 20.0000' / in.
 PLOT DATE = 8/19/2017

DESIGNED - FA
 DRAWN - PK
 CHECKED - MF
 DATE - 2/1/2017

REVISED -
 REVISED -
 REVISED -
 REVISED -

**STATE OF ILLINOIS
 DEPARTMENT OF TRANSPORTATION**

**IL ROUTE 83 AT IL ROUTE 171 (ARCHER AVE)
 CROSS SECTION - ILLINOIS ROUTE 171**

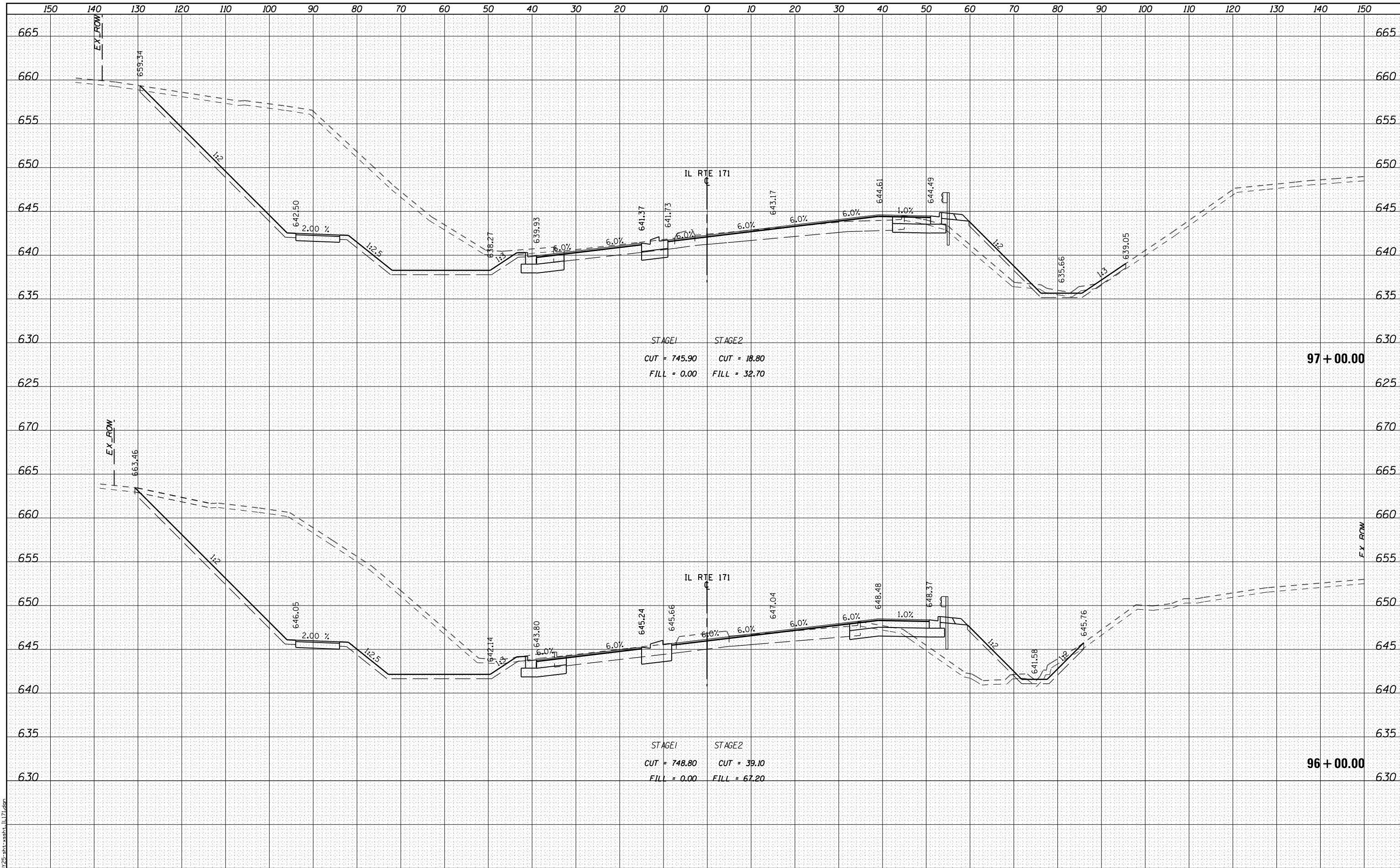
SCALE: 1" = 10' (H)
 1" = 5' (V) SHEET NO. 4 OF 14 SHEETS STA. 93+00.00 TO STA. 94+00.00

F.A.P. RTE.	SECTION	COUNTY	TOTAL SHEETS	SHEET NO.
344	3114-N(14)	COOK	225	213
CONTRACT NO.			60Y25	

FED. ROAD DIST. NO. ILLINOIS FED. AID PROJECT

DATE	
BY	
SURVEYED	
PLOTTED	
TEMPLATE	
AREAS	
CHECKED	
NO.	

DATE	
BY	
SURVEYED	
PLOTTED	
TEMPLATE	
AREAS	
CHECKED	
NO.	



STAGE1 STAGE2
 CUT = 745.90 CUT = 18.80
 FILL = 0.00 FILL = 32.70

STAGE1 STAGE2
 CUT = 748.80 CUT = 39.10
 FILL = 0.00 FILL = 67.20

RME Rubinos & Mesa Engineers, Inc.
 200 S. Michigan Avenue, Suite 1500, Chicago, IL 60604-2462

USER NAME = VALVAREZ	DESIGNED - FA	REVISIED -
	DRAWN - PK	REVISIED -
	CHECKED - MF	REVISIED -
	DATE - 2/1/2017	REVISIED -

**STATE OF ILLINOIS
 DEPARTMENT OF TRANSPORTATION**

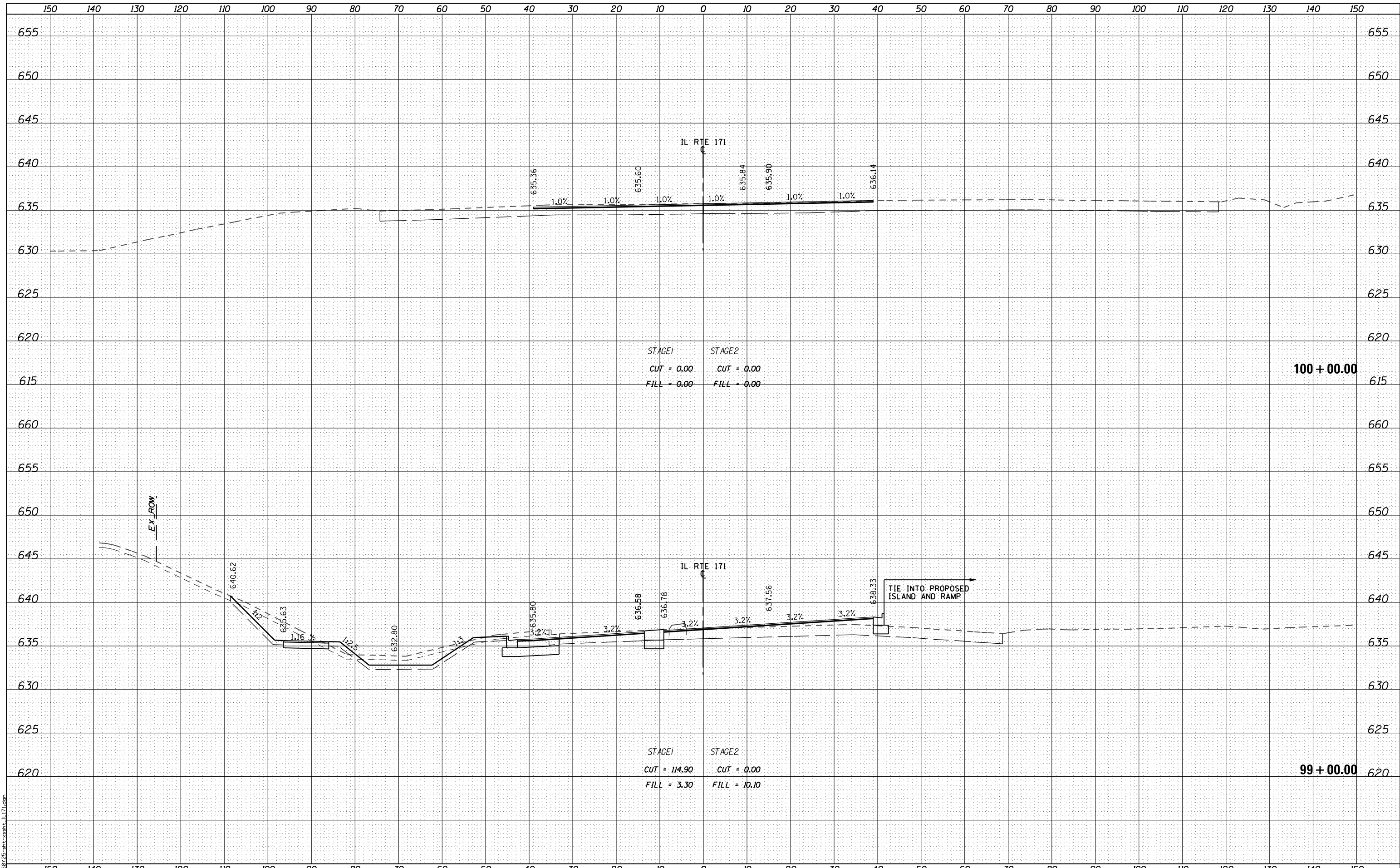
**IL ROUTE 83 AT IL ROUTE 171 (ARCHER AVE)
 CROSS SECTION - ILLINOIS ROUTE 171**

SCALE: 1" = 10' (H) / 1" = 5' (V) SHEET NO. 6 OF 14 SHEETS STA. 96+00.00 TO STA. 97+00.00

F.A.P. RTE.	SECTION	COUNTY	TOTAL SHEETS	SHEET NO.
344	3114-N(14)	COOK	225	215
FED. ROAD DIST. NO.			ILLINOIS FED. AID PROJECT	
			CONTRACT NO. 60Y25	

DATE	
BY	
SURVEYED	
PLOTTED	
TEMPLATE	
AREAS	
CHECKED	
FINAL SURVEY	
NOTE BOOK	
NO.	

DATE	
BY	
SURVEYED	
PLOTTED	
TEMPLATE	
AREAS	
CHECKED	
ORIGINAL SURVEY	
NOTE BOOK	
NO.	



STAGE1 STAGE2
 CUT = 0.00 CUT = 0.00
 FILL = 0.00 FILL = 0.00

STAGE1 STAGE2
 CUT = 114.90 CUT = 0.00
 FILL = 3.30 FILL = 10.10

100 + 00.00

99 + 00.00

RME Rubinos & Mesa Engineers, Inc.
 200 S. Michigan Avenue, Suite 1500, Chicago, IL 60604-2462

USER NAME = VALVAREZ	DESIGNED - FA	REVISIED -
	DRAWN - PK	REVISIED -
	CHECKED - MF	REVISIED -
	DATE - 2/1/2017	REVISIED -

**STATE OF ILLINOIS
 DEPARTMENT OF TRANSPORTATION**

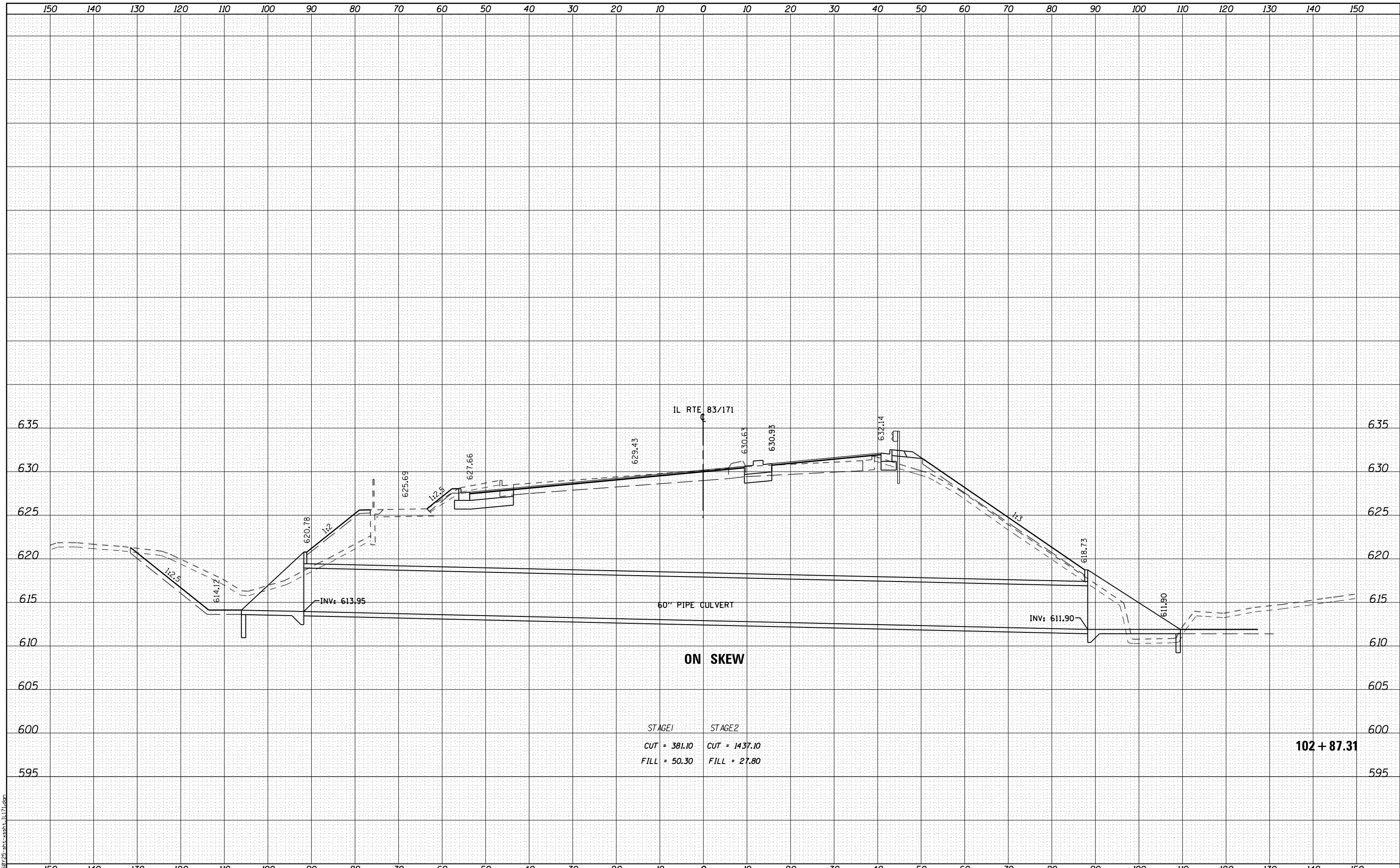
**IL ROUTE 83 AT IL ROUTE 171 (ARCHER AVE)
 CROSS SECTION - ILLINOIS ROUTE 171**

SCALE: 1" = 10' (H) / 1" = 5' (V) SHEET NO. 8 OF 14 SHEETS STA. 99+00.00 TO STA. 100+00.00

F.A.P. RTE.	SECTION	COUNTY	TOTAL SHEETS	SHEET NO.
344	3114-N(14)	COOK	225	217
FED. ROAD DIST. NO.			ILLINOIS FED. AID PROJECT	
			CONTRACT NO. 60Y25	

DATE	
BY	
SURVEYED	
PLOTTED	
TEMPLATE	
AREAS	
CHECKED	
FINAL SURVEY	
NOTE BOOK	
NO.	

DATE	
BY	
SURVEYED	
PLOTTED	
TEMPLATE	
AREAS	
CHECKED	
ORIGINAL SURVEY	
NOTE BOOK	
NO.	



ON SKEW

STAGE1	STAGE2
CUT = 381.10	CUT = 1437.10
FILL = 50.30	FILL = 27.80

102+87.31

FILE NAME = 0160725-ah-xx-xx-1117.dgn

RME Rubinos & Mesa Engineers, Inc.
200 S. Michigan Avenue, Suite 1500, Chicago, IL 60604-2462

USER NAME = valvarez
PLOT SCALE = 20.0000' / in.
PLOT DATE = 8/19/2017

DESIGNED - FA
DRAWN - PK
CHECKED - MF
DATE - 2/1/2017

REVISED -
REVISED -
REVISED -
REVISED -

STATE OF ILLINOIS
DEPARTMENT OF TRANSPORTATION

IL ROUTE 83 AT IL ROUTE 171 (ARCHER AVE)
CROSS SECTION - ILLINOIS ROUTE 171

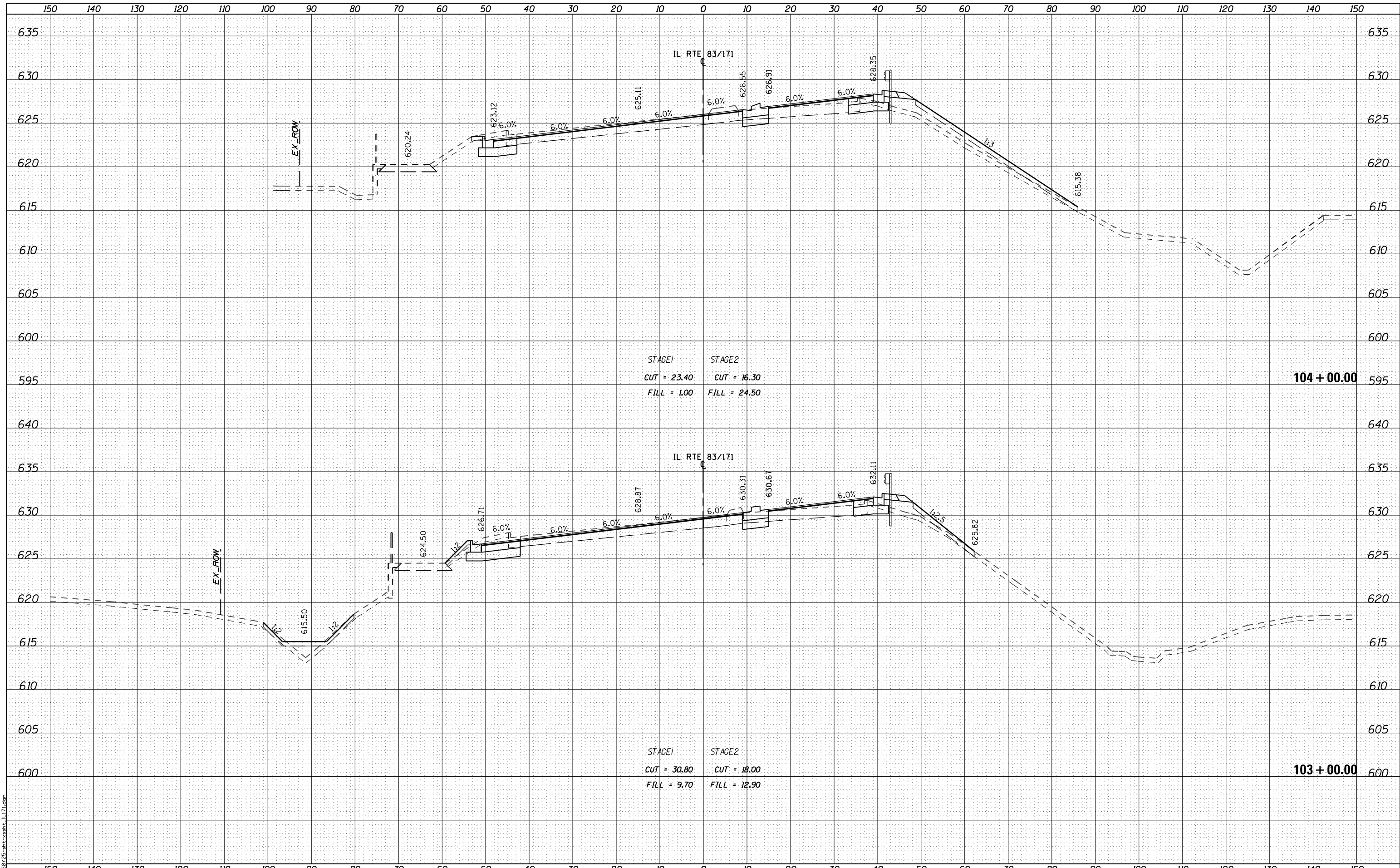
SCALE: 1" = 10' (H)
1" = 5' (V) SHEET NO. 10 OF 14 SHEETS STA. 102+87.31 TO STA. 102+87.31

F.A.P. RTE.	SECTION	COUNTY	TOTAL SHEETS	SHEET NO.
344	3114-N(14)	COOK	225	219
CONTRACT NO.			60Y25	

FED. ROAD DIST. NO. ILLINOIS FED. AID PROJECT

DATE	
BY	
SURVEYED	
PLOTTED	
TEMPLATE	
AREAS	
CHECKED	
FINAL SURVEY	
NOTE BOOK	
NO.	

DATE	
BY	
SURVEYED	
PLOTTED	
TEMPLATE	
AREAS	
CHECKED	
ORIGINAL SURVEY	
NOTE BOOK	
NO.	



STAGE1 STAGE2
 CUT = 23.40 CUT = 16.30
 FILL = 1.00 FILL = 24.50

STAGE1 STAGE2
 CUT = 30.80 CUT = 18.00
 FILL = 9.70 FILL = 12.90

RME Rubinos & Messia Engineers, Inc.
 200 S. Michigan Avenue, Suite 1500, Chicago, IL 60604-2462

USER NAME = VALVAREZ	DESIGNED - FA	REVISIED -
	DRAWN - PK	REVISIED -
PLOT SCALE = 20.0000' / in.	CHECKED - MF	REVISIED -
PLOT DATE = 8/19/2017	DATE - 2/1/2017	REVISIED -

**STATE OF ILLINOIS
 DEPARTMENT OF TRANSPORTATION**

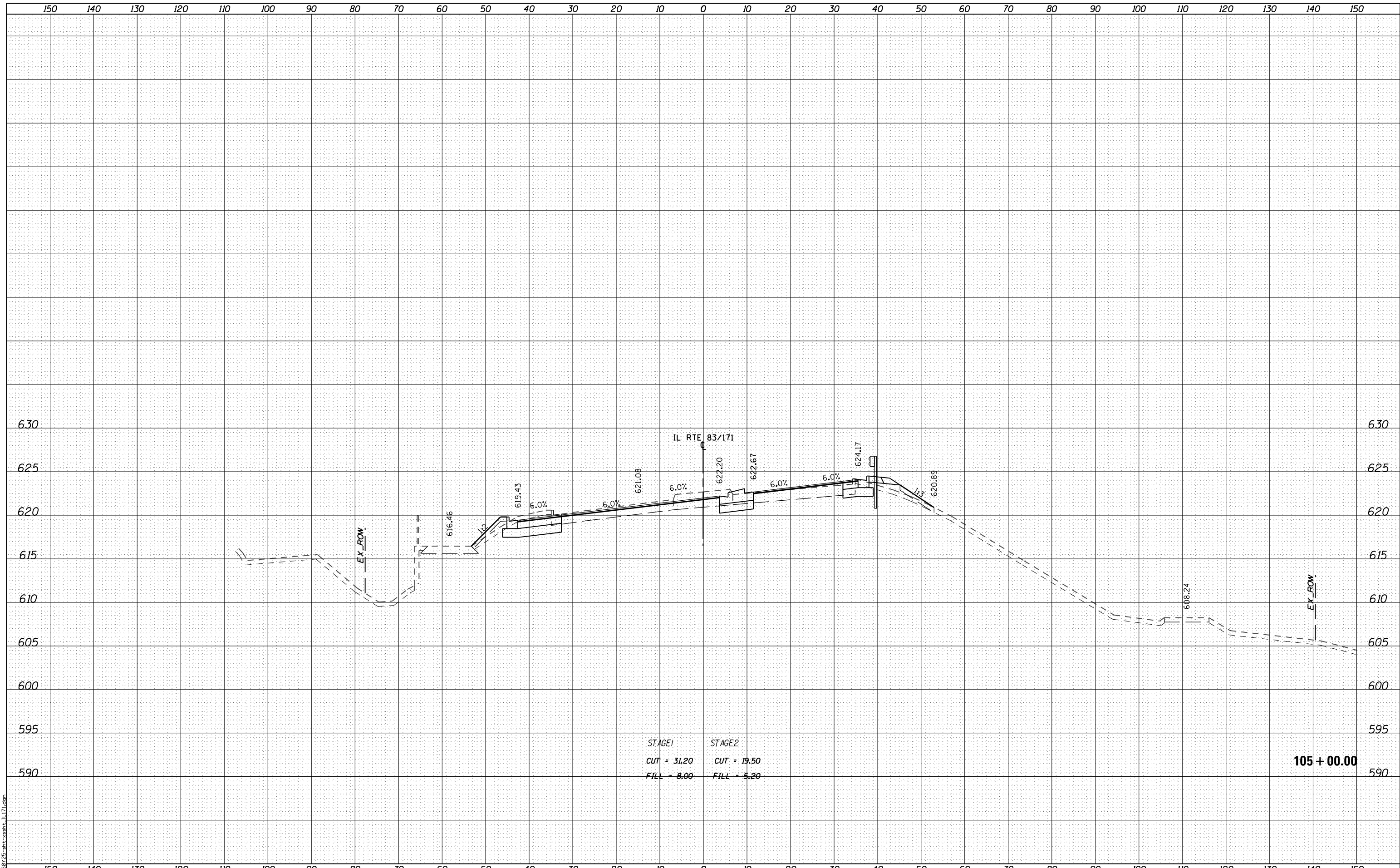
**IL ROUTE 83 AT IL ROUTE 171 (ARCHER AVE)
 CROSS SECTION - ILLINOIS ROUTE 171**

SCALE: 1" = 10' (H) / 1" = 5' (V) SHEET NO. 11 OF 14 SHEETS STA. 103+00.00 TO STA. 104+00.00

F.A.P. RTE.	SECTION	COUNTY	TOTAL SHEETS	SHEET NO.
344	3114-N(14)	COOK	225	220
FED. ROAD DIST. NO.			ILLINOIS FED. AID PROJECT	
			CONTRACT NO. 60Y25	

DATE	
BY	
SURVEYED	
PLOTTED	
TEMPLATE	
AREAS	
CHECKED	
FINAL SURVEY	
NOTE BOOK	
NO.	

DATE	
BY	
SURVEYED	
PLOTTED	
TEMPLATE	
AREAS	
CHECKED	
ORIGINAL SURVEY	
NOTE BOOK	
NO.	



FILE NAME = 0160725-ahh-xssht-1171.dgn

RME Rubinos & Mesa Engineers, Inc.
 200 S. Michigan Avenue, Suite 1500, Chicago, IL 60604-2462

USER NAME = VALVAREZ	DESIGNED - FA	REVISIED -
	DRAWN - PK	REVISIED -
PLOT SCALE = 20.0000' / in.	CHECKED - MF	REVISIED -
PLOT DATE = 8/19/2017	DATE = 2/1/2017	REVISIED -

**STATE OF ILLINOIS
 DEPARTMENT OF TRANSPORTATION**

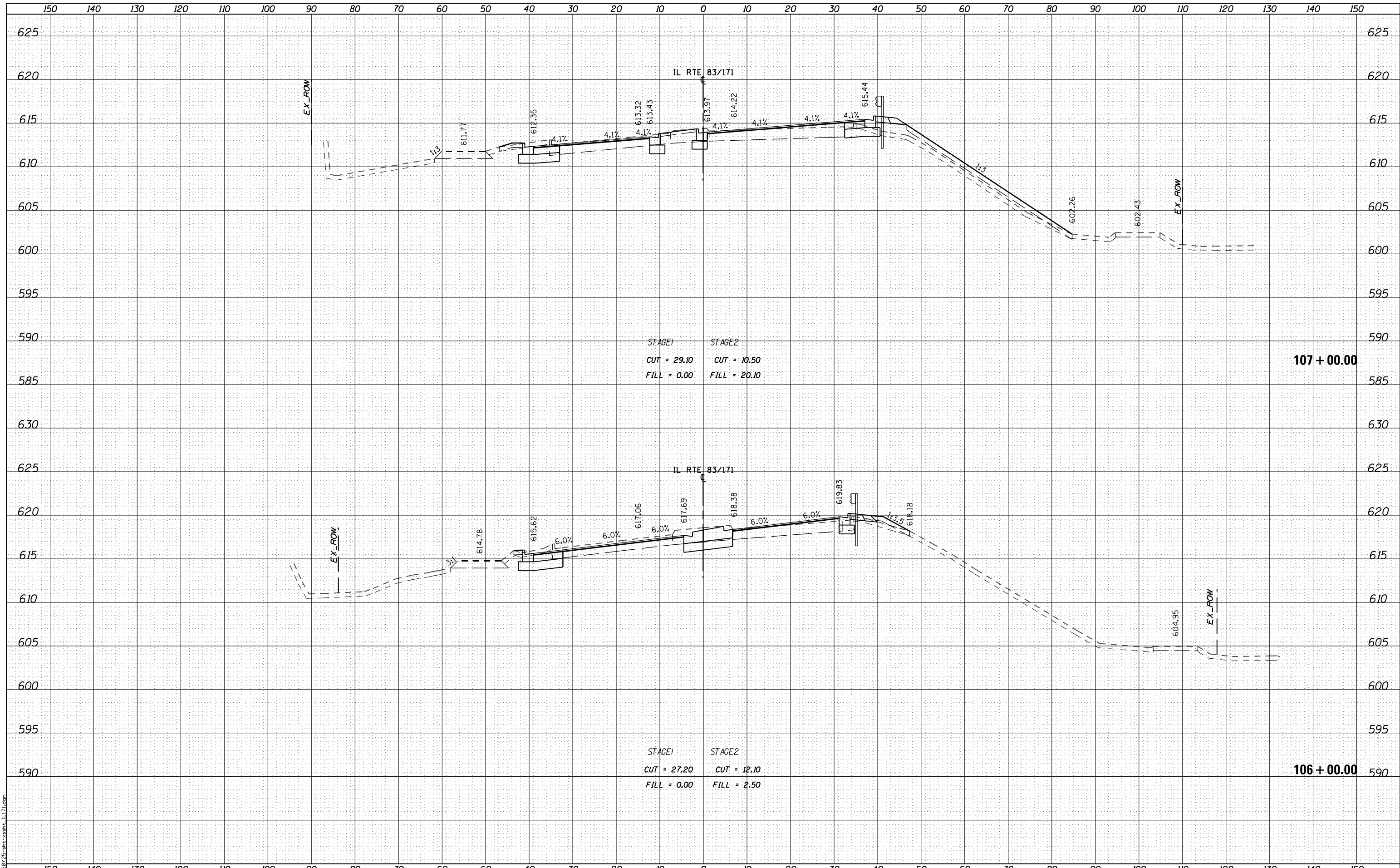
**IL ROUTE 83 AT IL ROUTE 171 (ARCHER AVE)
 CROSS SECTION - ILLINOIS ROUTE 171**

SCALE: 1" = 10' (H) 1" = 5' (V) SHEET NO. 12 OF 14 SHEETS STA. 105+00.00 TO STA. 105+00.00

F.A.P. RTE.	SECTION	COUNTY	TOTAL SHEETS	SHEET NO.
344	3114-N(14)	COOK	225	221
FED. ROAD DIST. NO.			ILLINOIS FED. AID PROJECT	
			CONTRACT NO. 60Y25	

DATE	
BY	
FINISHED	
NO. OF SHEETS	
DATE	
BY	
FINISHED	
NO. OF SHEETS	
DATE	
BY	
FINISHED	
NO. OF SHEETS	

DATE	
BY	
FINISHED	
NO. OF SHEETS	
DATE	
BY	
FINISHED	
NO. OF SHEETS	
DATE	
BY	
FINISHED	
NO. OF SHEETS	



STAGE1 STAGE2
 CUT = 29.10 CUT = 10.50
 FILL = 0.00 FILL = 20.10

STAGE1 STAGE2
 CUT = 27.20 CUT = 12.10
 FILL = 0.00 FILL = 2.50

107 + 00.00

106 + 00.00

FILE NAME = D:\60725-ahh-xshh-1171.dgn



USER NAME = VALVAREZ	DESIGNED - FA	REVISOR -
	DRAWN - PK	REVISOR -
PLOT SCALE = 20.0000' / in.	CHECKED - MF	REVISOR -
PLOT DATE = 8/19/2017	DATE = 2/1/2017	REVISOR -

STATE OF ILLINOIS
 DEPARTMENT OF TRANSPORTATION

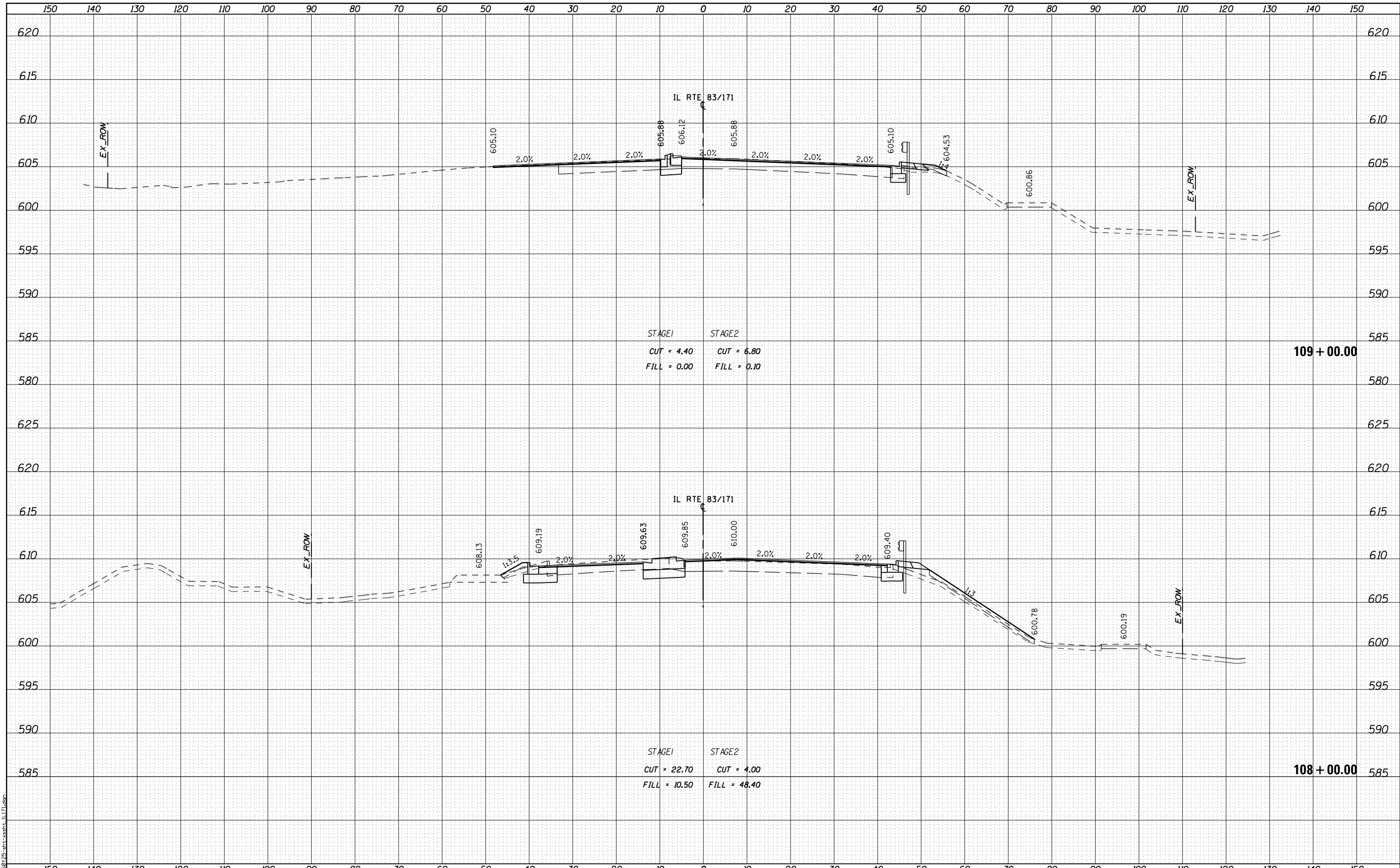
IL ROUTE 83 AT IL ROUTE 171 (ARCHER AVE)
 CROSS SECTION - ILLINOIS ROUTE 171

SCALE: 1" = 10' (H) 1" = 5' (V) SHEET NO. 13 OF 14 SHEETS STA. 106+00.00 TO STA. 107+00.00

F.A.P. RTE.	SECTION	COUNTY	TOTAL SHEETS	SHEET NO.
344	3114-N(14)	COOK	225	222
FED. ROAD DIST. NO.			ILLINOIS FED. AID PROJECT	
			CONTRACT NO. 60Y25	

DATE	
BY	
FINAL SURVEY	SURVEYED
NOTE BOOK	PLOTTED
NO.	TEMPLATE
	AREAS
	CHECKED

DATE	
BY	
ORIGINAL SURVEY	SURVEYED
NOTE BOOK	PLOTTED
NO.	TEMPLATE
	AREAS
	CHECKED



**STATE OF ILLINOIS
DEPARTMENT OF TRANSPORTATION**

**IL ROUTE 83 AT IL ROUTE 171 (ARCHER AVE)
CROSS SECTION - ILLINOIS ROUTE 171**

USER NAME	= VALVAREZ
DESIGNED	- FA
DRAWN	- PK
CHECKED	- MF
DATE	- 2/1/2017

REVISÉ	-
REVISÉ	-
REVISÉ	-
REVISÉ	-

SCALE: 1" = 10' (H) 1" = 5' (V) SHEET NO. 14 OF 16 SHEETS STA. 108+00.00 TO STA. 109+00.00

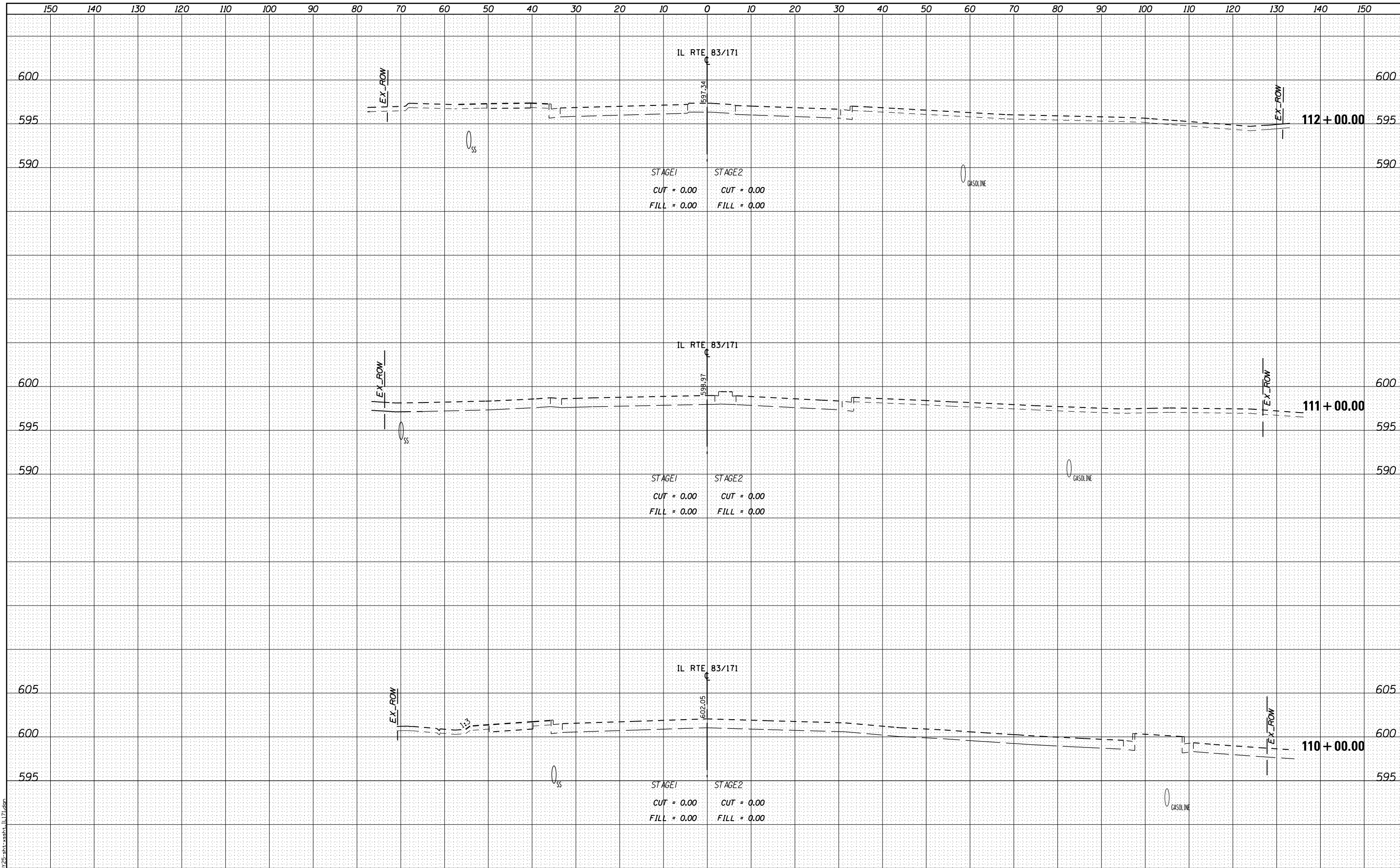
F.A.P. RTE.	SECTION	COUNTY	TOTAL SHEETS	SHEET NO.
344	3114-N(14)	COOK	225	223
FED. ROAD DIST. NO.			ILLINOIS FED. AID PROJECT	



FILE NAME = D:\60725-arch-ssht-1171.dgn

DATE	
BY	
FINAL SURVEY	SURVEYED
NOTE BOOK	PLOTTED
NO.	TEMPLATE
	AREAS CHECKED

DATE	
BY	
ORIGINAL SURVEY	SURVEYED
NOTE BOOK	PLOTTED
NO.	TEMPLATE
	AREAS CHECKED



FILE NAME = 0160725-ahh-xssht-11171.dgn

RME Rubinos & Mesa Engineers, Inc.
 200 S. Michigan Avenue, Suite 1500, Chicago, IL 60604-2462

USER NAME =	vaivarez
DESIGNED -	FA
DRAWN -	PK
CHECKED -	MF
DATE	2/01/2017
PLOT SCALE =	20.0000' / in.
PLOT DATE =	8/19/2017

DESIGNED -	FA
DRAWN -	PK
CHECKED -	MF
DATE	2/01/2017

REVISED -	
REVISED -	
REVISED -	
REVISED -	

**STATE OF ILLINOIS
 DEPARTMENT OF TRANSPORTATION**

**IL ROUTE 83 AT IL ROUTE 171 (ARCHER AVE)
 CROSS SECTION - ILLINOIS ROUTE 171**

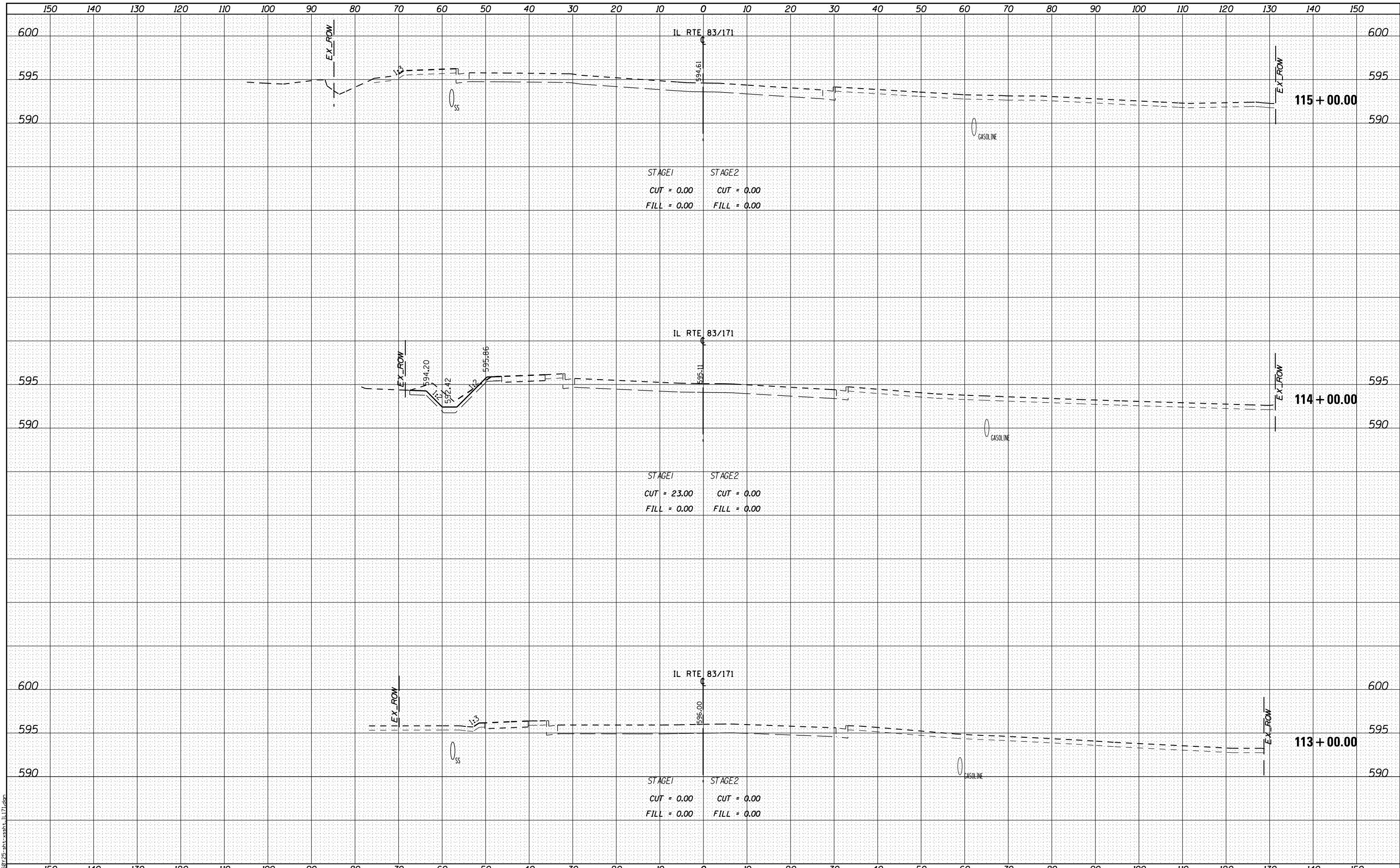
SCALE: 1" = 10' (H) 1" = 5' (V) SHEET NO. 15 OF 16 SHEETS STA. 110+00.00 TO STA. 112+00.00

F.A.P. RTE.	SECTION	COUNTY	TOTAL SHEETS	SHEET NO.
344	3114-N(14)	COOK	225	224
CONTRACT NO.			60Y25	

FED. ROAD DIST. NO. ILLINOIS FED. AID PROJECT

DATE	
BY	
ORIGINAL SURVEY	
PLOTTED TEMPLATE	
NOTE BOOK	
AREAS CHECKED	
NO.	

DATE	
BY	
ORIGINAL SURVEY	
PLOTTED TEMPLATE	
NOTE BOOK	
AREAS CHECKED	
NO.	



FILE NAME = 0160725-ahc-xsh.t_1171.dgn



USER NAME = VALVAREZ	DESIGNED - FA	REVISED -
	DRAWN - PK	REVISED -
PLOT SCALE = 20.0000' / in.	CHECKED - MF	REVISED -
PLOT DATE = 8/19/2017	DATE = 2/01/2017	REVISED -

**STATE OF ILLINOIS
DEPARTMENT OF TRANSPORTATION**

IL ROUTE 83 AT IL ROUTE 171 (ARCHER AVE) CROSS SECTION - ILLINOIS ROUTE 171	
SCALE: 1" = 10' (H) 1" = 5' (V)	SHEET NO. 16 OF 16 SHEETS
STA. 113+00.00	TO STA. 115+00.00

F.A.P. RTE. 344	SECTION 3114-N(14)	COUNTY COOK	TOTAL SHEETS 225	SHEET NO. 225
FED. ROAD DIST. NO.		ILLINOIS FED. AID PROJECT		
		CONTRACT NO. 60Y25		