


HIGHWAY STANDARDS

000001-08	STANDARD SYMBOLS, ABBREVIATIONS AND PATTERNS
001001-02	AREAS OF REINFORCEMENT BARS
001006	DECIMAL OF AN INCH AND OF A FOOT
280001-07	TEMPORARY EROSION CONTROL SYSTEMS
420401-13	PAVEMENT CONNECTOR (PCC) FOR BRIDGE APPROACH SLAB
482001-02	HMA SHOULDER ADJACENT TO FLEXIBLE PAVEMENT
610001-09	SHOULDER INLET WITH CURB
630001-13	STEEL PLATE BEAM GUARDRAIL
631031-18	TRAFFIC BARRIER TERMINAL, TYPE 6
643001-02	SAND MODULE IMPACT ATTENUATORS
701306-04	LANE CLOSURE, 2L, 2W, SLOW MOVING OPERATIONS DAY ONLY, FOR SPEEDS ≥ 45 MPH
701321-18	LANE CLOSURE, 2L, 2W, BRIDGE REPAIR WITH BARRIER
701400-12	APPROACH TO LANE CLOSURE, FREEWAY/EXPRESSWAY
701401-13	LANE CLOSURE, FREEWAY/EXPRESSWAY
701411-09	LANE CLOSURE, MULTILANE, AT ENTRANCE OF EXIT RAMP, FOR SPEEDS ≥ 45 MPH
701901-09	TRAFFIC CONTROL DEVICES
704001-08	TEMPORARY CONCRETE BARRIER
782006-01	GUARDRAIL AND BARRIER WALL REFLECTOR MOUNTING DETAILS
821101-02	LUMINAIRE WIRING IN POLE
825016-04	LIGHTING CONTROLLER PEDESTAL MOUNTED, 480V
830001-03	LIGHT POLE ALUMINUM MAST ARM
836001-04	LIGHT POLE FOUNDATION
838001-01	BREAKAWAY DEVICES
701402-12	LANE CLOSURE, FREEWAY/EXPRESSWAY WITH BARRIER 

IDOT DISTRICT 3 DETAILS

- HMA DETAIL AT BUTT JOINTS
- BUTT JOINT DETAILS
- PAVEMENT MARKING DETAILS
- TEMPORARY INFORMATION SIGNING - ROAD WORK
- TYPICAL ISLAND PAVEMENT MARKING
- WIDTH RESTRICTION SIGN DETAIL
- LINEAR DELINEATOR APPLICATION TO STANDARD GALVANIZED GUARDRAIL
- LINEAR DELINEATOR PANELS FOR TEMPORARY CONCRETE BARRIER
- SMART WORK ZONE DETAILS

GENERAL NOTES

- EXCEPT AS NOTED ON THE PLANS, PAVEMENT GRADES SHOWN ARE AT THE TOP OF PAVEMENT SURFACES.
- THE ENGINEER WILL BE THE SOLE JUDGE CONCERNING CURING TIME FOR THE VARIOUS HMA LIFTS.
- THE FINISHED EARTHWORK SHALL HAVE A VEGETATION SUSTAINING SOIL COVERING THE TOP FOUR INCHES (100 MILLIMETERS) IN AREAS TO BE SEEDDED OR SODDED. THE VEGETATION SUSTAINING SOIL REQUIRED WILL NOT BE PAID FOR SEPARATELY BUT WILL BE INCLUDED IN THE COST OF EARTH EXCAVATION.
- SHORT TERM PAVEMENT MARKING SHALL BE USED TO OUTLINE EXIT AND ENTRANCE RAMP FOR THE PRIME COAT APPLICATION AND EACH RESURFACING LIFT.
- THE FOLLOWING RATES OF APPLICATION HAVE BEEN USED IN CALCULATING PLAN QUANTITIES:

HMA RESURFACING	112 LBS / SQ YD / IN
AGGREGATE SHOULDERS	2.05 TONS / CU YD
SHORT TERM PAVEMENT MARKING	10 FT / 100 FT OF APPLICATION

THE MEMBERS OF JULIE KNOWN TO BE WITHIN THE PROJECT LIMITS ARE: CMS FIBER, EASTERN ILLINI ELECTRIC CO-OP, FRONTIER, METRO COMMUNICATIONS, AND WINDSTREAM

HMA MIXTUE REQUIREMENT TABLE				
LOCATIONS:	ENTIRE PROJECT	ENTIRE PROJECT	ENTIRE PROJECT	ENTIRE PROJECT
MIXTURE USE(S):	HMA BINDER	HMA SURFACE	HMA SHOULDER BOTTOM LIFT	HMA SHOULDER TOP LIFT
BINDER GRADE (PG):	SBS PG 70-22	PG 64-22	PG 64-22	PG 64-22
DESIGN AIR VOIDS:	4.0% @ N50	4.0% @ N50	4.0% @ N50	4.0% @ N50
MIXTURE COMPOSITION: (MIXTURE GRADATION)	IL 4.75	IL 9.5	IL 19.0	IL 9.5
FRICTION AGGREGATE:		MIXTURE C		
MIXTURE WEIGHT:	112.0 LB/SY/IN	112.0 LB/SY/IN	112.0 LB/SY/IN	112.0 LB/SY/IN
QUALITY MANAGEMENT PROGRAM:	QCQA	QCQA	QCQA	QCQA
SUBLOT SIZE:	N/A	N/A	N/A	N/A
DENSITY TEST METHOD:	CORES/NUCLEAR	CORES/NUCLEAR	CORES/NUCLEAR	CORES/NUCLEAR
MATERIAL TRANSFER DEVICE (REQUIRED):	NO	NO	NO	NO
THICKNESS:	1" MIN VAR TO 1 1/4"	MIN 1 1/2" VAR TO 2 1/4"	3"	1.5"

66E40 - CO. HWY 9 OVER I-57

COMMITMENTS:

NONE

STATE OF ILLINOIS
DEPARTMENT OF TRANSPORTATION
DISTRICT THREE
AS BUILT INFORMATION

SUPERVISING CONSTRUCTION FIELD ENGINEER

RESIDENT ENGINEER / TECHNICIAN

START & END DATES
OF CONSTRUCTION: _____

INSPECTORS: _____

MODEL: Typical (Sheet)
FILE: h:\a\m\p\commitments\h-202-pw\sheet\comp\pw_ext\Documents\20381728016510_Transportation\02_Engineering_Services\01_Roadway\10_BIM_CADD\SHD\366E40-SHT-GN.dgn

USER NAME = HUANGK	DESIGNED - JGC	REVISED -
	DRAWN - JGC	REVISED -
PLOT SCALE = 0.16666633' / in.	CHECKED - AAC	REVISED -
PLOT DATE = 10/20/2023	DATE - 10-13-23	REVISED -

STATE OF ILLINOIS
DEPARTMENT OF TRANSPORTATION

GENERAL NOTES
AND COMMITMENTS

SCALE: SHEET 2 OF 104 SHEETS STA. TO STA.

F.A.I. RTE.	SECTION	COUNTY	TOTAL SHEETS	SHEET NO.
57	(38-7HB-2)D	IROQUOIS	104	2
CONTRACT NO. 66E40				
ILLINOIS FED. AID PROJECT				

MODEL: SDO 4 (Sheet)
 FILE NAME: p:\work\smith-ed02-pe-katsley.com\pwworkspace\Documents\2038\28015\10 Transportation02 Engineering Services01 Roadway\10 BIM_CADD\SH1\0366E40-SHT-SDO.dgn

CODE NO.	ITEM	UNIT	TOTAL QUANTITY	CONSTR. CODE
				90% FED 10% STATE
				BRIDGE
				0013
				038-0076
* 63100085	TRAFFIC BARRIER TERMINAL, TYPE 6	EACH	4	4
63200310	GUARDRAIL REMOVAL	FOOT	1063	1063
64300450	IMPACT ATTENUATORS (NON-REDIRECTIVE), TEST LEVEL 3	EACH	2	2
64301090	ATTENUATOR BASE	SQ YD	55	55
* 66900200	NON-SPECIAL WASTE DISPOSAL	CU YD	189	189
* 66900530	SOIL DISPOSAL ANALYSIS	EACH	1	1
* 66901001	REGULATED SUBSTANCES PRE-CONSTRUCTION PLAN	L SUM	1	1
* 66901003	REGULATED SUBSTANCES FINAL CONSTRUCTION REPORT	L SUM	1	1
* 66901006	REGULATED SUBSTANCES MONITORING	CAL DA	5	5
67000400	ENGINEER'S FIELD OFFICE, TYPE A	CAL MO	12	12
67100100	MOBILIZATION	L SUM	1	1
70100207	TRAFFIC CONTROL AND PROTECTION, STANDARD 701402	EACH	2	2
70100800	TRAFFIC CONTROL AND PROTECTION, STANDARD 701401	L SUM	1	1
70100405	TRAFFIC CONTROL AND PROTECTION, STANDARD 701321	EACH	1	1
70100420	TRAFFIC CONTROL AND PROTECTION, STANDARD 701411	EACH	2	2

*= SPECIALTY ITEM



USER NAME = JUEJ	DESIGNED = JJ	REVISED =	STATE OF ILLINOIS DEPARTMENT OF TRANSPORTATION	SUMMARY OF QUANTITIES			F.A.I RTE.	SECTION	COUNTY	TOTAL SHEETS	SHEET NO.
PLOT SCALE = 0.16666633' / in.	DRAWN = JJ	REVISED =					57	(38-7HB-2)D	IROQUOIS	104	6
PLOT DATE = 10/23/2023	CHECKED = AAC	REVISED =		SCALE:	SHEET 6	OF 104 SHEETS	STA.	TO STA.	CONTRACT NO. 66E40		
DATE = 10-13-23	DATE =	REVISED =		ILLINOIS FED. AID PROJECT							

NOTES

① SEE TYPICAL SECTIONS FOR PAVEMENT AND GUARDRAIL DETAILS

PRE-STAGE CONSTRUCTION:

CH 9

1. REMOVE WESTBOUND SHOULDER AND GUARDRAIL FROM STA. 25+47.17 TO STA. 27+62.91 AND FROM STA. 32+09.32 TO STA. 34+55.73. MAINTAIN EXISTING TRAFFIC BARRIER TERMINALS AT BRIDGE.
2. CONSTRUCT PERMANENT HMA SHOULDERS FROM STA. 25+47.17 TO STA. 27+62.91 AND FROM STA. 32+09.32 TO STA. 34+55.73.
3. CONSTRUCT WESTBOUND GUARDRAIL INSTALLATION AND TIE TO EXISTING FROM STA. 25+47.17 TO STA. 27+62.91 AND FROM STA. 32+09.32 TO STA. 34+55.73.

I-57

1. INSTALL PROTECTIVE SHIELDING (SEE BRIDGE PLANS FOR LIMITS OF PROTECTIVE SHIELDING)

PRE-STAGE TRAFFIC:

CH 9

PROVIDE ONE TWELVE-FOOT LANE THROUGH THE PROJECT LIMITS ON EXISTING EASTBOUND PAVEMENT AND EXISTING BRIDGE STRUCTURE. USE HIGHWAY STANDARD 701321 AND TEMPORARY TRAFFIC SIGNALS FOR TRAFFIC CONTROL AND PROTECTION.

I-57

PROVIDE ONE TWELVE FOOT LANE THROUGH THE PROJECT LIMITS ON EXISTING INSIDE LANES. USE HIGHWAY STANDARD 701401 AND 701411 AND DISTRICT 3 DETAIL 701-12.

STAGE 1 CONSTRUCTION:

CH 9

1. REMOVE EASTBOUND SHOULDER AND GUARDRAIL FROM STA. 25+35.86 TO STA 27+92.60 AND FROM STA. 32+38.98 TO STA. 34+58.43.
2. CONSTRUCT PERMANENT HMA SHOULDERS FROM STA. 25+35.86 TO STA 27+92.60 AND FROM STA. 32+38.98 TO STA. 34+58.43.
3. CONSTRUCT EASTBOUND GUARDRAIL FROM STA. 25+35.86 TO STA 27+92.60 AND FROM STA. 32+38.98 TO STA. 34+58.43.
4. REMOVE AND REPLACE SOUTHERN HALF OF BRIDGE DECK OVER I-57 (SEE STRUCTURE PLANS).

I-57

1. COMPLETE SUBSTRUCTURE WORK AT ABUTMENTS AND SLOPE WALLS.

STAGE 1 TRAFFIC:

CH 9

PROVIDE ONE TWELVE-FOOT LANE THROUGH THE PROJECT LIMITS ON EXISTING WESTBOUND PAVEMENT AND EXISTING BRIDGE STRUCTURE. USE HIGHWAY STANDARD 701321 AND TEMPORARY TRAFFIC SIGNALS FOR TRAFFIC CONTROL AND PROTECTION.

I-57

PROVIDE ONE TWELVE FOOT LANE THROUGH THE PROJECT LIMITS ON EXISTING INSIDE LANES. USE HIGHWAY STANDARD 701401 AND 701411 AND DISTRICT 3 DETAIL 701-12.

STAGE 2 CONSTRUCTION:

CH 9

1. REMOVE REMAINDER OF EXISTING WESTBOUND SHOULDER, GUARDRAIL, AND BARRIER TERMINAL AT BRIDGE.
2. CONSTRUCT REMAINDER OF WESTBOUND SHOULDER AND GUARDRAIL.
3. REMOVE AND REPLACE NORTHERN HALF OF BRIDGE DECK OVER I-57 (SEE STRUCTURE PLANS).

I-57

1. COMPLETE BRIDGE WORK ON NORTHERN PORTION OF STRUCTURE.
2. COMPLETE REMAINING SUBSTRUCTURE WORK AT ABUTMENTS AND SLOPE WALLS AND OUTSIDE PIERS.
3. BEGIN PAINTING FINISHED PORTIONS OF CH 9 BRIDGE.

STAGE 2 TRAFFIC:

CH 9

PROVIDE ONE TWELVE-FOOT LANE THROUGH THE PROJECT LIMITS ON EXISTING EASTBOUND PAVEMENT AND NEW BRIDGE DECK. USE HIGHWAY STANDARD 701321 AND TEMPORARY TRAFFIC SIGNALS FOR TRAFFIC CONTROL AND PROTECTION.

I-57

PROVIDE ONE TWELVE FOOT LANE THROUGH PROJECT LIMITS ON EXISTING OUTSIDE SHOULDER WHEN BRIDGE PIER AND ABUTMENT OPERATIONS ARE COMPLETE. USE HIGHWAY STANDARD 701402 AND 701411 AND DISTRICT 3 DETAIL 701-12.

FINAL STAGE CONSTRUCTION:

CH 9

MILL & OVERLAY ROADWAY WITHIN PROJECT LIMITS.

I-57

COMPLETE WORK ON MEDIAN PIER AND BRIDGE PAINTING

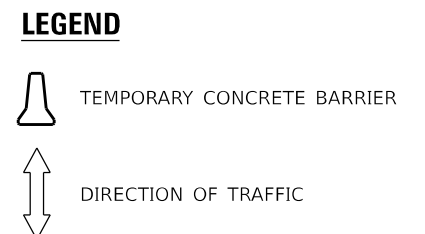
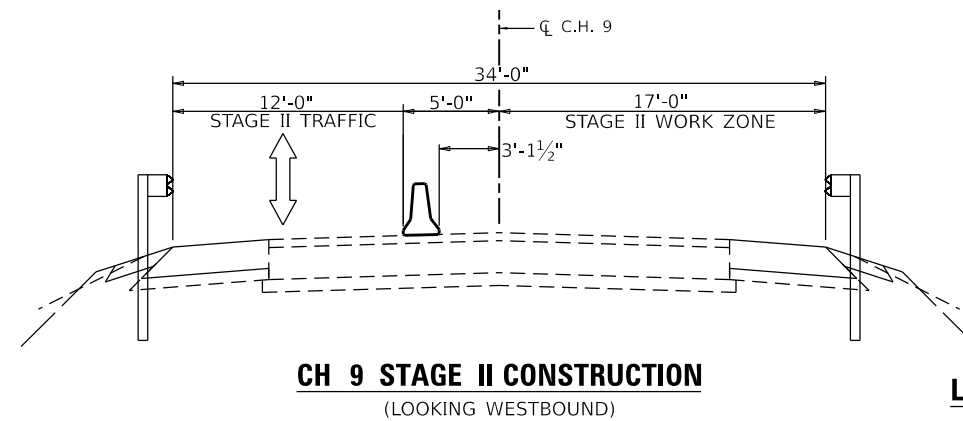
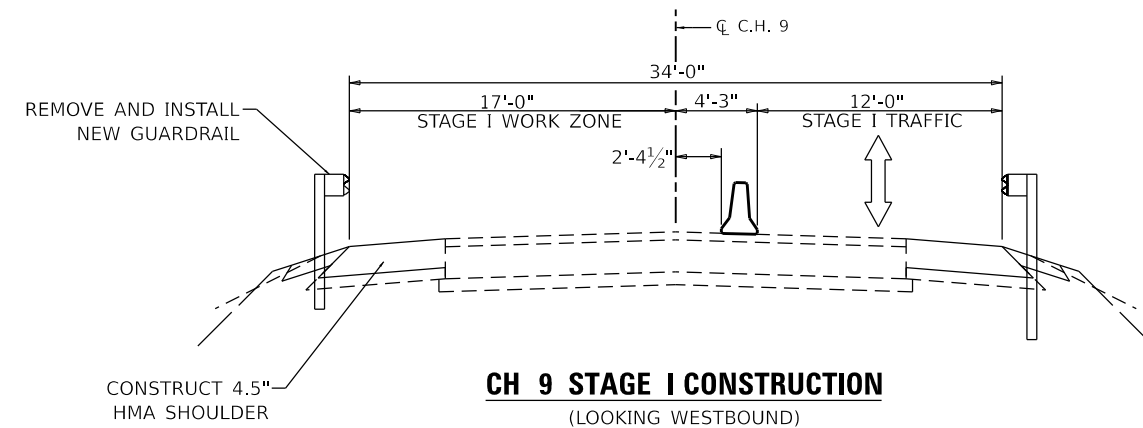
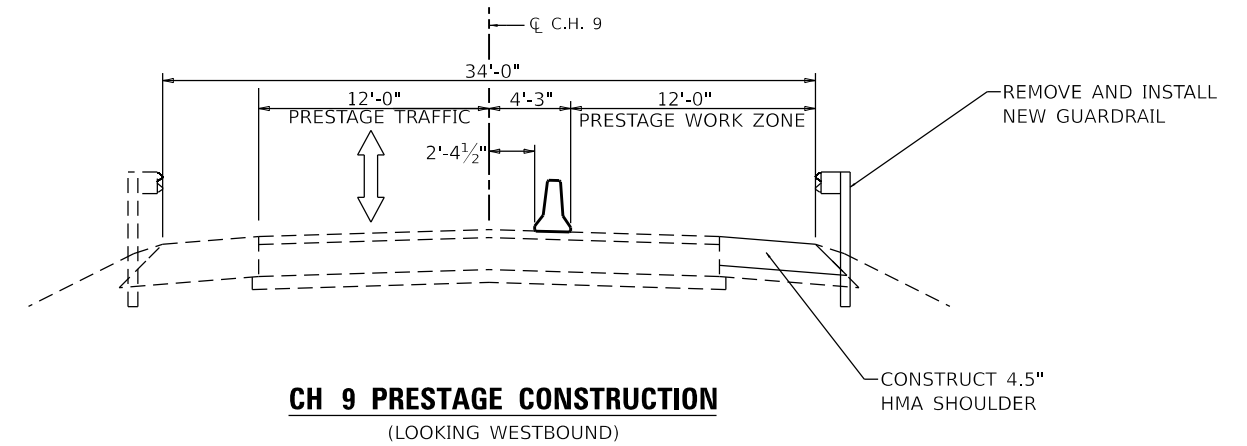
FINAL STAGE TRAFFIC:

CH 9

UTILIZE HIGHWAY STANDARD 701306 TO MAINTAIN ONE TWELVE-FOOT LANE DURING THE MILLING AND RESURFACING OPERATIONS ON CH 9.

I-57

PROVIDE ONE TWELVE-FOOT LANE THROUGH THE PROJECT LIMITS ON EXISTING SHOULDERS. USE HIGHWAY STANDARD 701402 AND 701411 AND DISTRICT 3 DETAIL 701-12.



MODEL: Typical (Sheet) FILE NAME: \\com\smith\h-s02-pw\ibentley.com\pww\ext\Documents\203817\200165\10_Transportation\02_Engineering_Services\01_Roadway\10_BIM_CADD\SHD\366E40-SHT-5T-C6.dgn

USER NAME = PELLOLCA	DESIGNED - JJ	REVISED - 1/8/2024 C.P.
DRAWN - JJ	REVISIONS -	
PLOT SCALE = 0.16666633' / in.	CHECKED - AAC	REVISIONS -
PLOT DATE = 1/8/2024	DATE - 10-13-23	REVISIONS -

**STATE OF ILLINOIS
DEPARTMENT OF TRANSPORTATION**

SUGGESTED MAINTENANCE OF TRAFFIC TYPICAL SECTIONS			
SCALE: N.T.S.	SHEET 22	OF 104 SHEETS	STA. TO STA.

F.A.I. RTE.	SECTION	COUNTY	TOTAL SHEETS	SHEET NO.
57	(38-7HB-2)D	IROQUOIS	104	22
CONTRACT NO. 66E40				
ILLINOIS FED. AID PROJECT				