

STATE OF ILLINOIS
DEPARTMENT OF TRANSPORTATION

F.A.P. RTE.	SECTION	COUNTY	TOTAL SHEETS	SHEET NO.
649	(108)SFY	*	9	1
ILLINOIS CONTRACT NO. 66N34			*LASALLE / LIVINGSTON	

INDEX OF SHEETS

- 1 COVER SHEET
- 2 GENERAL NOTES
- 3-4 SUMMARY OF QUANTITIES
- 5 TYPICAL SECTIONS
- 6-7 SCHEDULES
- 8-9 DETAILS

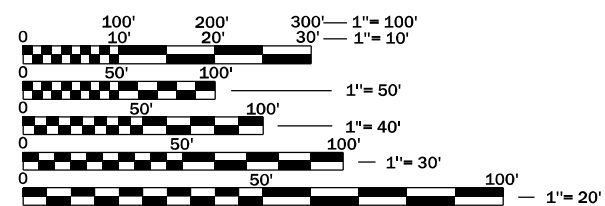
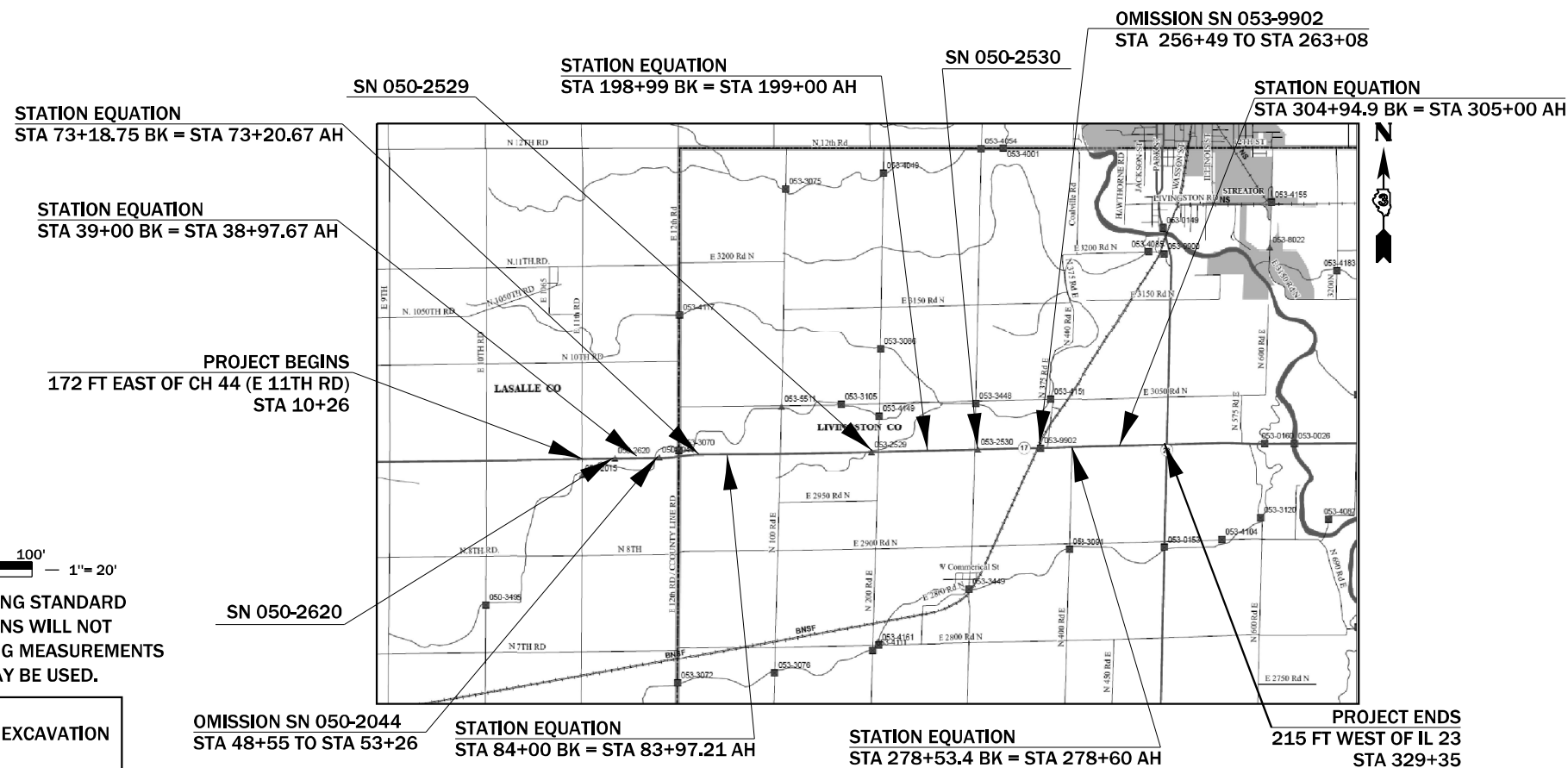
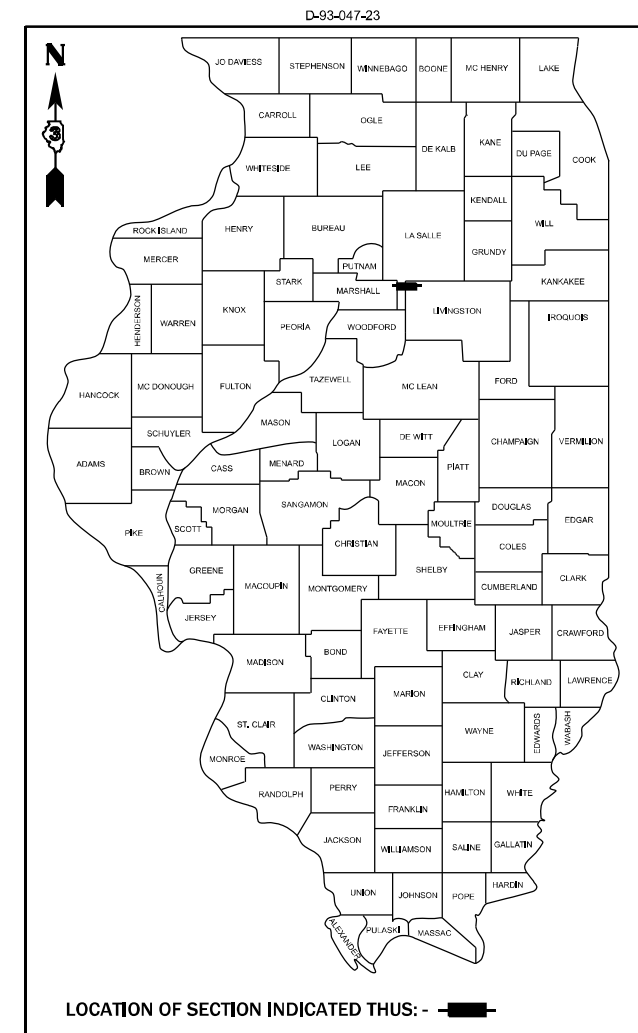
HIGHWAY STANDARDS

- 000001-08 STANDARD SYMBOLS, ABBREVIATIONS AND PATTERNS
- 001006 DECIMAL OF AN INCH AND OF A FOOT
- 406201-01 MAILBOX TURNOUT
- 482001-02 HMA SHOULDER ADJACENT TO FLEXIBLE PAVEMENT
- 642006-01 SHOULDER RUMBLE STRIPS, 8 INCH
- 701006-05 OFF-ROAD OPERATIONS 2L, 2W, 15' TO 24" FROM PAVEMENT EDGE
- 701306-04 LANE CLOSURE, 2L, 2W, SLOW MOVING OPERATIONS DAY ONLY,
- 701311-03 LANE CLOSURE, 2L, 2W, MOVING OPERATIONS - DAY ONLY
- 701326-04 LANE CLOSURE, 2L, 2W, PAVEMENT WIDENING, FOR SPEEDS ≥ 45 MPH
- 701901-09 TRAFFIC CONTROL DEVICES

PROPOSED HIGHWAY PLANS

FAP ROUTE 649 (IL 17) SECTION (108)SFY PROJECT HSIP-J37D(945) SHOULDER WIDENING & RUMBLE STRIPS LASALLE & LIVINGSTON COUNTIES

C-93-067-23



FULL SIZE PLANS HAVE BEEN PREPARED USING STANDARD ENGINEERING SCALES. REDUCED SIZED PLANS WILL NOT CONFORM TO STANDARD SCALES. IN MAKING MEASUREMENTS ON REDUCED PLANS, THE ABOVE SCALES MAY BE USED.

J.U.L.I.E.
JOINT UTILITY LOCATION INFORMATION FOR EXCAVATION
1-800-892-0123
OR 811

PROJECT ENGINEER: MARC BUDZYNSKI, P.E.
UNIT CHIEF: BRANDON CRISS
DISTRICT 3 NO. (815) 434-6131
CONTRACT NO. 66N34

GROSS LENGTH = 31,731 FT. = 6.01 MILES
NET LENGTH = 30,495 FT. = 5.78 MILES

IL 17 - MINOR ARTERIAL
2021 ADT = 1700
P.V. = 94.1% S.U. = 1.2% M.U. = 4.7%

STATE OF ILLINOIS
DEPARTMENT OF TRANSPORTATION

SUBMITTED October 20, 2023

[Signature] REGIONAL ENGINEER

December 8, 2023

[Signature] ENGINEER OF DESIGN AND ENVIRONMENT

December 8, 2023

[Signature] DIRECTOR OF HIGHWAYS PROJECT IMPLEMENTATION

**PRINTED BY THE AUTHORITY
OF THE STATE OF ILLINOIS**

GENERAL NOTES

THE HMA SURFACE OF ALL MAILBOX TURNOUTS, PRIVATE ENTRANCES, COMMERCIAL ENTRANCES, AND SIDE ROADS SHALL BE MADE NEATLY, IN A WORKMANLIKE MANNER, AND SHALL ACCURATELY CONFORM TO THE SHAPES AND DIMENSIONS SHOWN ON THE PLAN DETAILS. IF REQUIRED BY THE ENGINEER, THE CONTRACTOR SHALL SAW CUT THE HMA SURFACE TO CONFORM TO THE SHAPES AND DIMENSIONS SHOWN ON THE PLAN DETAILS. THIS WORK WILL BE INCLUDED IN THE COST OF THE HMA SURFACE.

THE ENGINEER WILL BE THE SOLE JUDGE CONCERNING CURING TIME FOR THE VARIOUS HMA LIFTS.

THE FOLLOWING RATES OF APPLICATION HAVE BEEN USED IN CALCULATING PLAN QUANTITIES:

HMA RESURFACING	112	LBS / SQ YD / IN
-----------------	-----	------------------

MEMBERS OF JULIE KNOWN TO BE WITHIN THE LIMITS OF THE IMPROVEMENT ARE:

- COMED
- FRONTIER
- ILLINOIS AMERICAN WATER
- METRO COMMUNICATIONS
- MTCO COMMUNICATIONS
- NICOR

COMMITMENTS:

NONE

HMA MIXTURE REQUIREMENT TABLE		
LOCATIONS:	ENTIRE PROJECT	ENTIRE PROJECT
MIXTURE USE(S):	SHOULDER BOTTOM LIFT (S)	SHOULDER TOP LIFT
BINDER GRADE (PG):	PG 64 22	PG 64-22
DESIGN AIR VOIDS:	4.0% @ N50	4.0% @ N50
MIXTURE COMPOSITION: (MIXTURE GRADATION)	IL 19.0	IL 9.5
FRICTION AGGREGATE:		MIXTURE C
MIXTURE WEIGHT:	112.0 LB/SY/IN	112.0 LB/SY/IN
QUALITY MANAGEMENT PROGRAM:	QCQA	QCQA
SUBLOT SIZE:	N/A	N/A
DENSITY TEST METHOD:	CORES/NUCLEAR	CORES/NUCLEAR
MATERIAL TRANSFER DEVICE (REQUIRED):	NO	NO

STATE OF ILLINOIS
DEPARTMENT OF TRANSPORTATION
DISTRICT THREE
AS BUILT INFORMATION

SUPERVISING CONSTRUCTION FIELD ENGINEER

RESIDENT ENGINEER / TECHNICIAN

START & END DATES
OF CONSTRUCTION:

INSPECTORS:

MODEL: GENERAL NOTES (Sheet)
FILE NAME: P:\GIS\Projects\DOT\Office\District 3\0666833\CD\Drawings\0666833_Sheets

USER NAME = Brandon.Criss	DESIGNED - _____	REVISED - _____
	DRAWN - _____	REVISED - _____
PLOT SCALE = 0.16666633' / in.	CHECKED - _____	REVISED - _____
PLOT DATE = 10/23/2023	DATE - _____	REVISED - _____

**STATE OF ILLINOIS
DEPARTMENT OF TRANSPORTATION**

GENERAL NOTES

SCALE: 1"=50' SHEETA001 OF 1 SHEETS STA. ___+___ TO STA. ___+___

F.A.P. RTE.	SECTION	COUNTY	TOTAL SHEETS	SHEET NO.
649	(108)SFY	*	9	2
			CONTRACT NO. 66N34	
		ILLINOIS FED. AID PROJECT		

*LASALLE / LIVINGSTON

90% FED
10% STATE

CODE NO.	ITEM	UNIT	TOTAL QUANTITY	CONSTRUCTION CODE					
				LASALLE SAFETY 0021 RURAL	LIVINGSTON SAFETY 0021 RURAL				
				40600290	BITUMINOUS MATERIALS (TACK COAT)	POUND	12109	1851	10258
				40800050	INCIDENTAL HOT-MIX ASPHALT SURFACING	TON	2		2
44000157	HOT-MIX ASPHALT SURFACE REMOVAL, 2"	SQ YD	20		20				
48203029	HOT-MIX ASPHALT SHOULDERS, 8"	SQ YD	26854	4105	22749				
64200108	SHOULDER RUMBLE STRIPS, 8 INCH	FOOT	60392	9229	51163				
* 66900200	NON-SPECIAL WASTE DISPOSAL	CU YD	332	57	275				
* 66900530	SOIL DISPOSAL ANALYSIS	EACH	5	2	3				
* 66901001	REGULATED SUBSTANCES PRE-CONSTRUCTION PLAN	L SUM	1	0.5	0.5				
* 66901003	REGULATED SUBSTANCES FINAL CONSTRUCTION REPORT	L SUM	1	0.5	0.5				
* 66901006	REGULATED SUBSTANCES MONITORING	CAL DA	4	2	2				
67100100	MOBILIZATION	L SUM	1	0.5	0.5				
70100460	TRAFFIC CONTROL AND PROTECTION, STANDARD 701306	L SUM	1	0.5	0.5				
70100500	TRAFFIC CONTROL AND PROTECTION, STANDARD 701326	L SUM	1	0.5	0.5				
70103815	TRAFFIC CONTROL SURVEILLANCE	CAL DA	15	7	8				

* = SPECIALTY ITEM

MODEL: SUMMARY OF QUANTITIES (6-14)
FILE NAME: P:\GIS\Projects\DOT\Documents\DOT Office\District 3\ORD Project\0365\34\CADD\0365\34 Streets

USER NAME = Brandon.Criss	DESIGNED - _____	REVISED - _____
DRAWN - _____	REVISIONS - _____	
PLOT SCALE = 0.16666633' / in.	CHECKED - _____	REVISED - _____
PLOT DATE = 10/20/2023	DATE - _____	REVISED - _____

**STATE OF ILLINOIS
DEPARTMENT OF TRANSPORTATION**

SUMMARY OF QUANTITIES

SCALE: SHEET 1 OF 2 SHEETS STA. ___+___ TO STA. ___+___

F.A.P. RTE. 649	SECTION (108)SFY	COUNTY *	TOTAL SHEETS 9	SHEET NO. 3
ILLINOIS FED. AID PROJECT			CONTRACT NO. 66N34	

*LASALLE / LIVINGSTON

90% FED
10% STATE

CONSTRUCTION CODE

CODE NO.	ITEM	UNIT	TOTAL QUANTITY	CONSTRUCTION CODE	
				LASALLE SAFETY	LIVINGSTON SAFETY
				0021 RURAL	0021 RURAL
* 78009004	MODIFIED URETHANE PAVEMENT MARKING - LINE 4"	FOOT	122974	16976	105998
X4404262	SHOULDER REMOVAL (SPECIAL)	SQ YD	26854	4105	22749
Z0030850	TEMPORARY INFORMATION SIGNING	SQ FT	42	21	21

*= SPECIALTY ITEM

MODEL: SUMMARY OF QUANTITIES 2 (Sheet)
FILE NAME: c:\p\work\evtd\brandon.criss@illinois.gov\0871420\0366N34_Sheets.dgn

USER NAME = Brandon.Criss	DESIGNED -	REVISED -
	DRAWN -	REVISED -
PLOT SCALE = 0.16666633' / in.	CHECKED -	REVISED -
PLOT DATE = 10/20/2023	DATE -	REVISED -

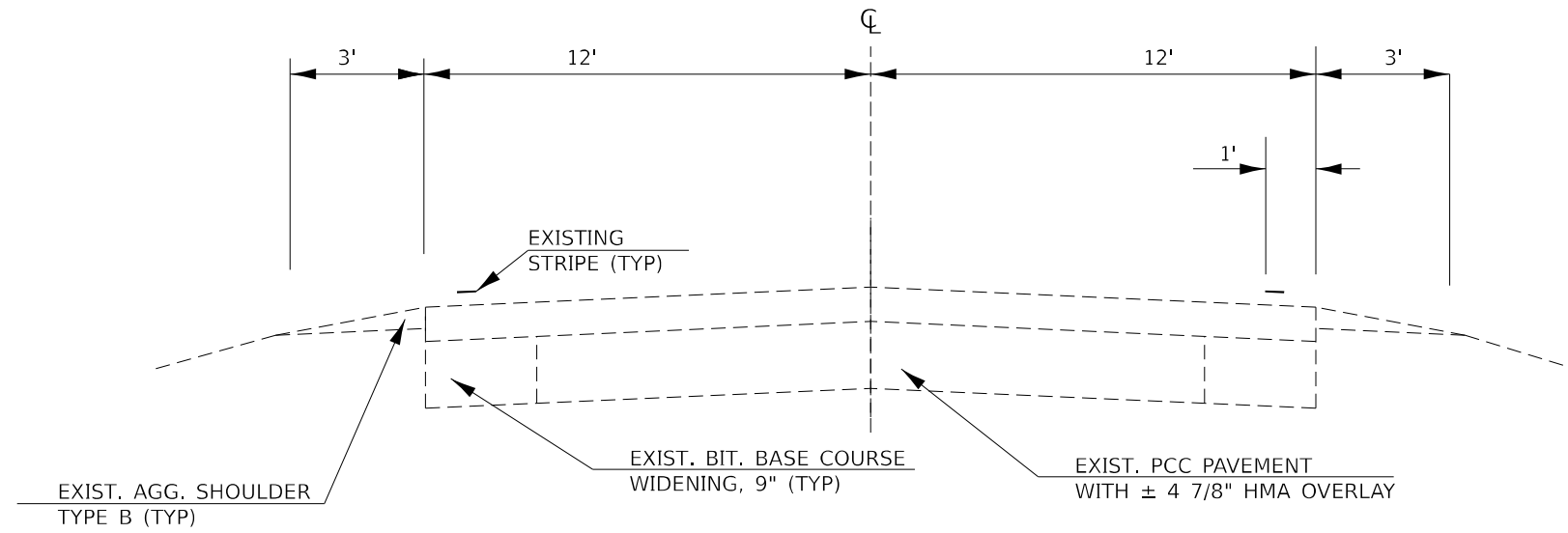
STATE OF ILLINOIS
DEPARTMENT OF TRANSPORTATION

SUMMARY OF QUANTITIES

SCALE: SHEET 2 OF 2 SHEETS STA. ___+___ TO STA. ___+___

F.A.P. RTE.	SECTION	COUNTY	TOTAL SHEETS	SHEET NO.
649	(108)SFY		9	4
			CONTRACT NO. 66N34	
		ILLINOIS FED. AID PROJECT		

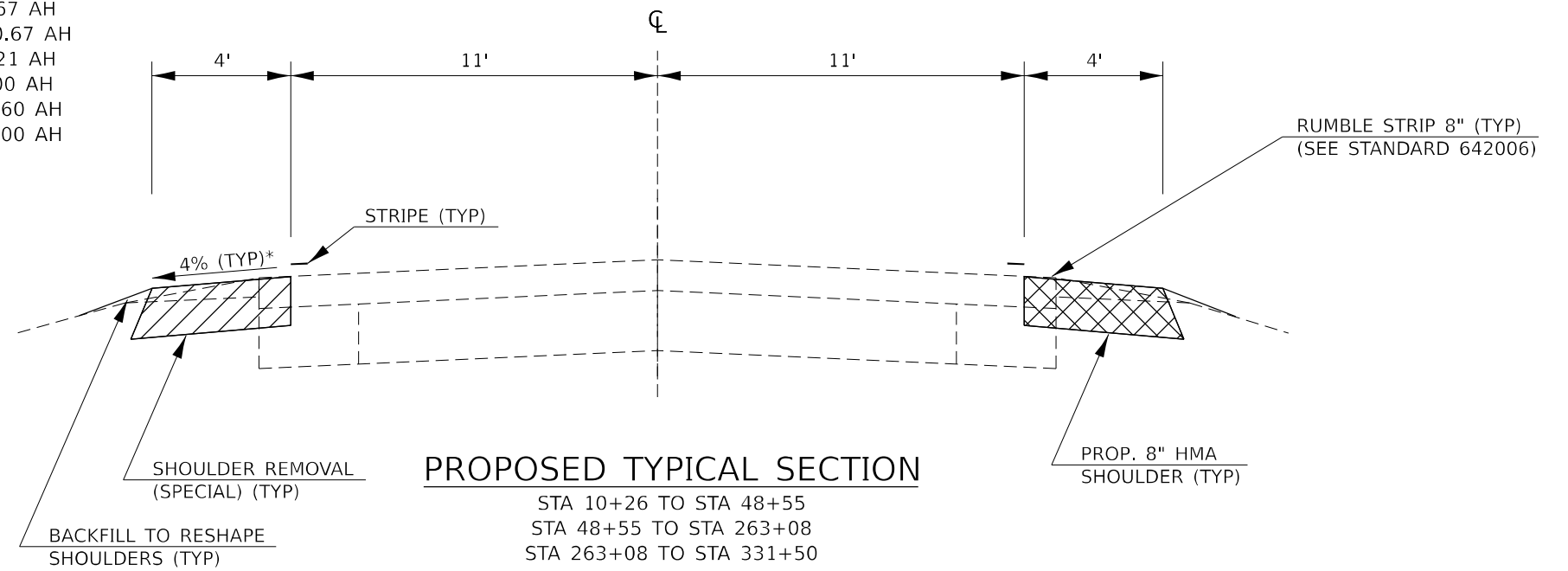
*LASALLE/LIVINGSTON



EXISTING TYPICAL SECTION

STA 10+26 TO STA 48+55
 STA 48+55 TO STA 263+08
 STA 263+08 TO STA 331+50

STATION EQUATION
 STA 39+00 BK = STA 38+97.67 AH
 STA 73+18.75 BK = STA 73+20.67 AH
 STA 84+00 BK = STA 83+97.21 AH
 STA 198+99 BK = STA 199+00 AH
 STA 278+53.4 BK = STA 278+60 AH
 STA 304+94.9 BK = STA 305+00 AH



PROPOSED TYPICAL SECTION

STA 10+26 TO STA 48+55
 STA 48+55 TO STA 263+08
 STA 263+08 TO STA 331+50

STATION EQUATION
 STA 39+00 BK = STA 38+97.67 AH
 STA 73+18.75 BK = STA 73+20.67 AH
 STA 84+00 BK = STA 83+97.21 AH
 STA 198+99 BK = STA 199+00 AH
 STA 278+53.4 BK = STA 278+60 AH
 STA 304+94.9 BK = STA 305+00 AH

MODEL: TYPICAL SECTIONS (Sheet)
 FILE NAME: P:\GIS\Projects\DOT\Documents\DOT Office\District 3\ORD Project\66N34\CADD\Drawings\66N34 Sheets

USER NAME = Brandon.Criss	DESIGNED -	REVISED -
DRAWN -	REVISED -	
PLOT SCALE = 0.16666633' / in.	CHECKED -	REVISED -
PLOT DATE = 10/19/2023	DATE -	REVISED -

**STATE OF ILLINOIS
 DEPARTMENT OF TRANSPORTATION**

TYPICAL SECTIONS

SCALE: 1"=50' SHEET 1 OF 1 SHEETS STA. ___+___ TO STA. ___+___

F.A.P. RTE. 649	SECTION (108)SFY	COUNTY *	TOTAL SHEETS 9	SHEET NO. 5
ILLINOIS FED. AID PROJECT			CONTRACT NO. 66N34	

*LASALLE / LIVINGSTON

SHOULDER REMOVAL & REPLACEMENT SCHEDULE

LOCATION			SIDE	LENGTH	SHOULDER REMOVAL (SPECIAL)	HMA SHOULDERS 8"	BIT MTL S TACK COAT	SHOULDER RUMBLE STRIPS, 8"	*MOD URETH PVMT MARKING WHITE 4"
STA	TO	STA	LT / RT	FOOT	SQ YD	SQ YD	POUND	FOOT	FOOT
LASALLE COUNTY									
CH 44 (E 11TH RD) = STA 8+54									
10+26	TO	39+00	LT & RT	2,874	2,555	2,555	1,150	5,748	11,496
STATION EQUATION									
STA 39+00 BK = STA 38+97.67 AH									
38+98	TO	48+16	LT & RT	918	817	817	368	1,837	
48+16	TO	48+55	LT**	39	18	18	9	39	156
SN 050-2044 OMISSION 48+55 TO 53+26									
53+26	TO	53+90	RT**	64	29	29	14	64	1,884
53+90	TO	61+35	LT & RT	745	663	663	299	1,490	2,980
61+35	TO	61+86	LT**	51	23	23	11	51	204
COUNTY E 12TH RD = STA 61+93									
LASALLE COUNTY SUB-TOTAL				5,162	4,105	4,105	1,851	9,229	16,976
LIVINGSTON COUNTY									
62+36	TO	62+86	LT**	50	23	23	11	50	200
62+86	TO	73+19	LT & RT	1,033	918	918	414	2,066	4,131
STATION EQUATION									
STA 73+18.75 BK = STA 73+20.67 AH									
73+21	TO	84+00	LT & RT	1,079	960	960	432	2,159	4,317
STATION EQUATION									
STA 84+00 BK = STA 83+97.21 AH									
83+97	TO	117+50	LT & RT	3,353	2,981	2,981	1,342	6,706	13,411
COUNTY N 100 E RD = STA 117+75									
118+09	TO	171+44	LT & RT	5,335	4,743	4,743	2,135	10,670	21,340
171+44	TO	171+51	LT**	7	4	4	2	7	28
COUNTY N 200 E RD = STA 117+75									
172+14	TO	172+29	RT**	15	7	7	4	15	60
172+29	TO	198+99	LT & RT	2,670	2,374	2,374	1,069	5,340	10,680
STATION EQUATION									
STA 198+99 BK = STA 199+00 AH									
199+00	TO	224+76	LT & RT	2,670	2,374	2,374	1,069	5,340	10,680
224+76	TO	225+02	LT**	26	12	12	6	26	104
COUNTY N 300 E RD = STA 225+40									
225+93	TO	226+19	LT**	26	12	12	6	26	104
226+19	TO	256+13	LT & RT	2,994	2,662	2,662	1,198	5,988	11,976
256+13	TO	256+49	LT**	36	16	16	8	36	144
SN 053-9902 OMISSION 256+49 TO 263+08									
263+08	TO	264+78	LT**	170	76	76	35	170	680
264+78	TO	265+07	RT	29					58
COUNTY N 379 E RD = STA 265+07									
265+07	TO	265+51	RT	44					88
265+51	TO	266+06	LT**	55	25	25	12	55	220
266+06	TO	278+15	LT & RT	1,209	1,075	1,075	484	2,418	4,836
278+15	TO	278+47	LT	32	15	15	7	32	64
COUNTY N 400 E RD = STA 278+47									
278+47	TO	278+53	LT	6					13
STATION EQUATION									
STA 278+53.4 BK = STA 278+60 AH									
278+60	TO	278+86	LT	26					52
278+86	TO	304+95	LT & RT	2,609	2,320	2,320	1,044	5,218	10,436
STATION EQUATION									
STA 304+94.9 BK = STA 305+00 AH									
305+00	TO	329+06	LT & RT	2,406	2,139	2,139	963	4,812	9,624
329+06	TO	329+35	LT**	29	13	13	6	29	116
COUNTY IL 23 = STA 331+50									
LIVINGSTON COUNTY SUB-TOTAL				26,568	22,749	22,749	10,247	51,163	105,998
TOTAL				31,731	26,854	26,854	12,098	60,392	122,974

*QUANTITIES REPRESENT TWO APPLICATIONS

**PAVEMENT MARKING QUANTITIES ARE INCLUDED FOR LT & RT

MODEL - SCHEDULES OF QUANTITIES (SHEET 1)
FILE NAME - P:\GIS\Projects\DOT\Documents\DOT Office\District 3\ORD Project\0365\34\CADD\0365\34_Sheets

USER NAME = Brandon.Criss	DESIGNED - _____	REVISED - _____
	DRAWN - _____	REVISED - _____
PLOT SCALE = 0.16666633' / in.	CHECKED - _____	REVISED - _____
PLOT DATE = 10/19/2023	DATE - _____	REVISED - _____

**STATE OF ILLINOIS
DEPARTMENT OF TRANSPORTATION**

SCHEDULES OF QUANTITIES

SCALE: 1"=50' SHEET 1 OF 2 SHEETS STA. ___+___ TO STA. ___+___

F.A.P. RTE.	SECTION	COUNTY	TOTAL SHEETS	SHEET NO.
649	(108)SFY	*	9	6
CONTRACT NO. 66N34				
ILLINOIS FED. AID PROJECT				

*LASALLE / LIVINGSTON

MAILBOX TURNOUT SCHEDULE				
STA / SIDE		HMA SURF REMOVAL 2"	INCIDENTAL HMA SURF 2"	BIT MTLs TACK COAT
		SQ YD	TON	POUND
LIVINGSTON COUNTY				
83+72	RT	4.9	0.6	3
302+40	LT	6.4	0.8	3
302+97	LT	8.9	1	5
TOTAL		20	2	11

THE FIRST 4 FEET OF THE MBTO ADJACENT TO THE TRAVELED WAY IS PAID AS SHOULDER REMOVAL (SPECIAL) AND HMA SHOULDERS 8". THE REMAINING AREA OF THE MBTO IS PAID AS HMA SURFACE REMOVAL 2" AND INCIDENTAL HMA

SURVEY MONUMENT TABLE					
MONUMENT NUMBER	DESCRIPTION	EXISTING MONUMENT TYPE	PROPOSED MONUMENT TYPE	MONUMENT RECORD TO BE RECORDED	RESPONSIBILITY
N/A	NO CENTERLINE CONTROL OR LAND SURVEY	N/A	N/A	N/A	N/A
	PERMANENT SURVEY MARKERS TO BE SET ON THIS JOB				

ONLY THE ORIGINAL SCOPE OF THIS JOB HAS BEEN SEARCHED FOR MONUMENTS. R.E. MUST INFORM PLATS AND PLANS TO SEARCH FOR ADDITIONAL MONUMENTS PRIOR TO CONSTRUCTION IF ADDENDUMS ARE ADDED.

NO KNOWN LAND SURVEY OR CENTERLINE CONTROL MONUMENTS WILL BE DISTURBED BY THE CONSTRUCTION.

UNKNOWN MONUMENTS MAY EXIST. IF AN UNLISTED MONUMENT IS FOUND, R.E. IS REQUIRED TO PROTECT THE MONUMENT FROM DAMAGE UNTIL A PLATS AND PLANS LAND SURVEYOR CAN DOCUMENT THE MONUMENT. PLATS AND PLANS WILL RESET SUCH MONUMENTS IN KIND FOLLOWING CONSTRUCTION.

NO MONUMENT RECORDS ARE REQUIRED FOR THIS JOB.

MODEL: SCHEDULES OF QUANTITIES 2 (Sheet)
FILE NAME: P:\GIS\Projects\2023\DOT\Documents\DOT\Office\District 3\ORD Project\0365\34\CADD\0365\34_Sheets

USER NAME = Brandon.Criss	DESIGNED - _____	REVISED - _____
	DRAWN - _____	REVISED - _____
PLOT SCALE = 0.16666633' / in.	CHECKED - _____	REVISED - _____
PLOT DATE = 10/19/2023	DATE - _____	REVISED - _____

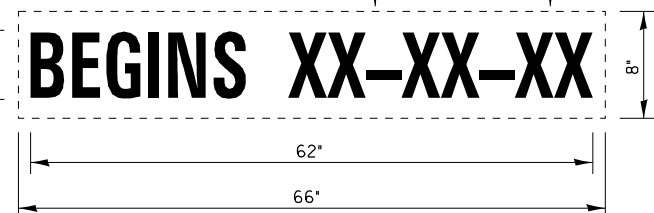
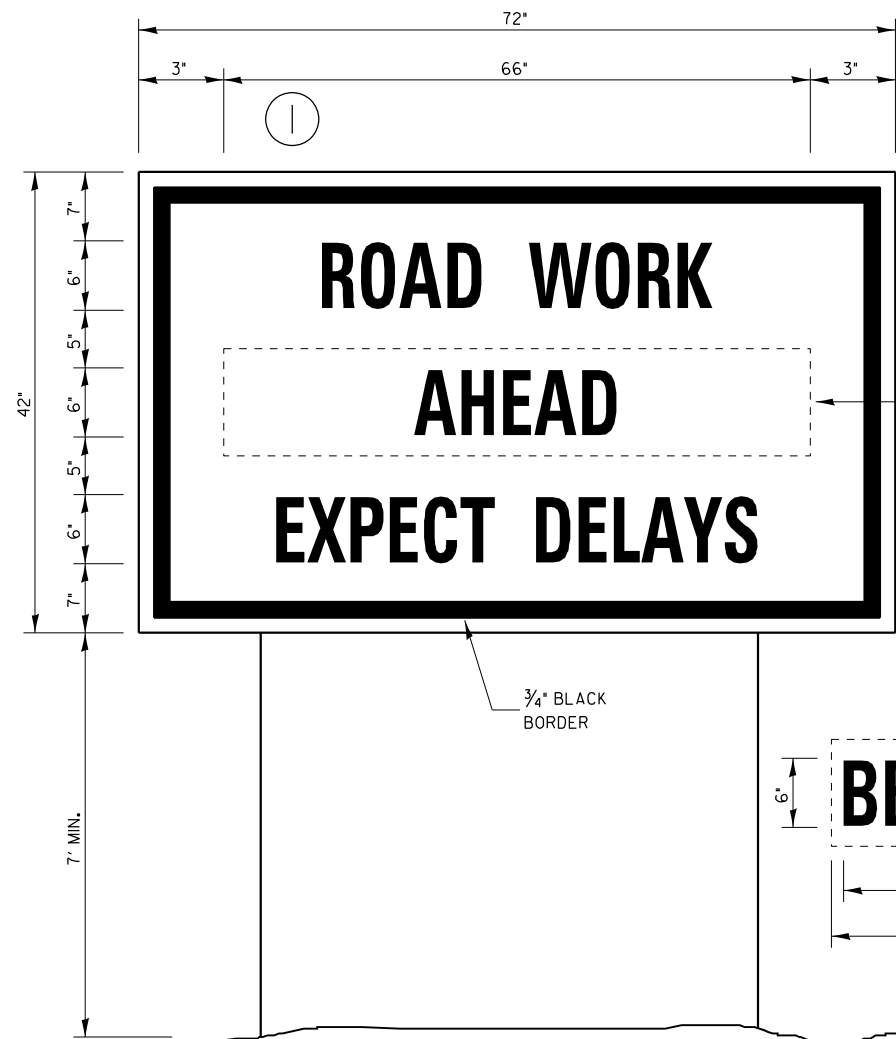
**STATE OF ILLINOIS
DEPARTMENT OF TRANSPORTATION**

SCHEDULES OF QUANTITIES

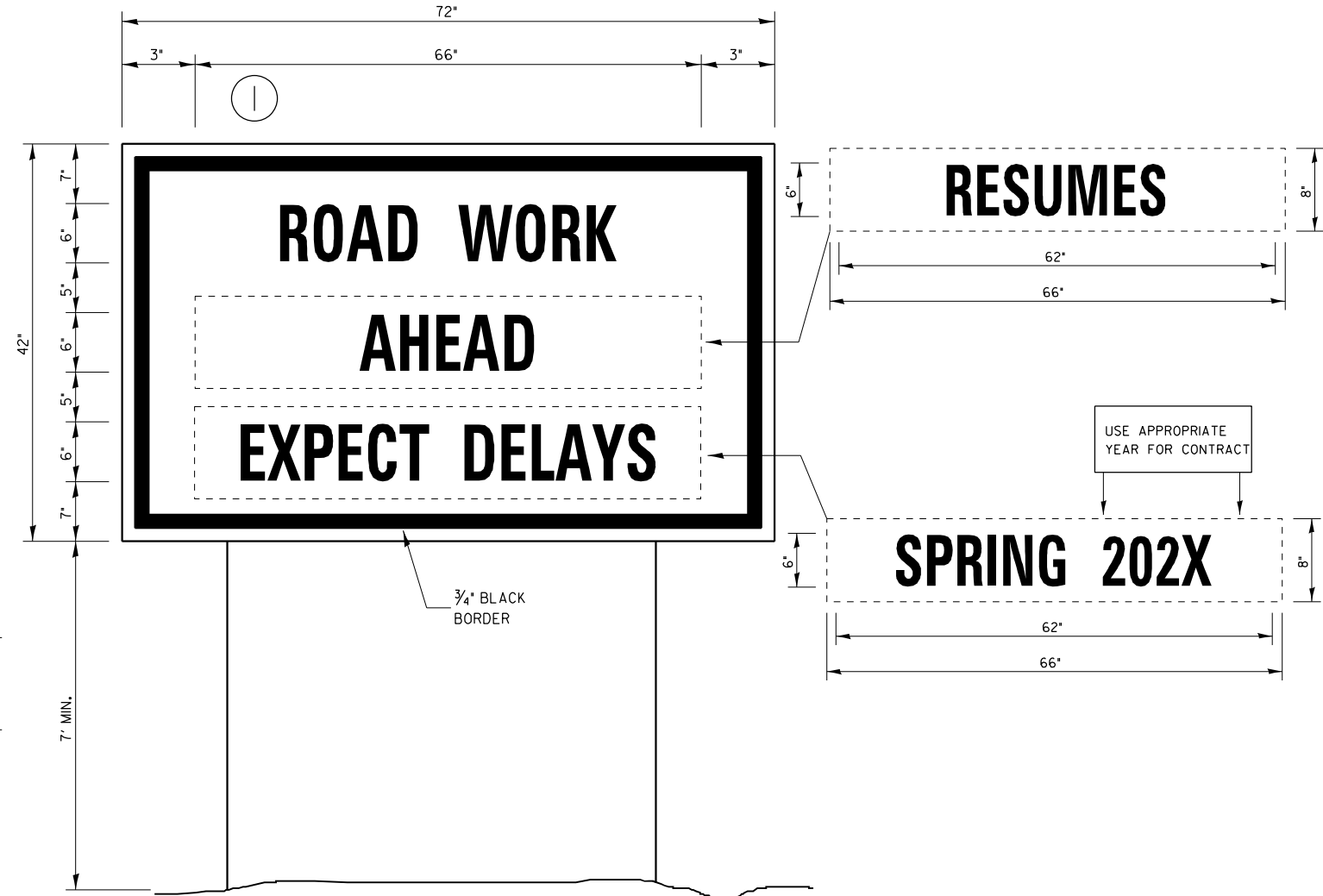
SCALE: 1"=50' SHEET 2 OF 2 SHEETS STA. ___+___ TO STA. ___+___

F.A.P. RTE.	SECTION	COUNTY	TOTAL SHEETS	SHEET NO.
649	(108)SFY	*	9	7
CONTRACT NO. 66N34			ILLINOIS FED. AID PROJECT	

*LASALLE / LIVINGSTON



TEMPORARY INFORMATION SIGNING



WINTER SHUT DOWN SIGNING

NOTES:

1. USE 6" D BLACK LETTERING ON FLOURESENT ORANGE BACKGROUND.
2. ERECT SIGNS AT LOCATIONS IN ADVANCE OF THE "ROAD CONSTRUCTION AHEAD" SIGNS AS DIRECTED BY THE ENGINEER.
3. ERECT SIGN ① WITH INSTALLED PANEL ② A MINIMUM OF ONE WEEK PRIOR TO THE START OF THE LANE CLOSURE.
4. REMOVE PANEL ② ON THAT DATE.
5. SEE SPECIAL PROVISION "TEMPORARY INFORMATION SIGNING" FOR ADDITIONAL INFORMATION.
6. WILL BE PAID FOR PER SQ FT AS "TEMPORARY INFORMATION SIGNING". EACH SIGN = 21 SQ FT AND THE DATE PANEL ② WILL NOT BE MEASURED SEPARATELY FOR PAYMENT.

MODEL: DETAIL.S.1 [E:\h\l] FILE NAME: p:\dot\documents\DOT Office\District 3\ORD Project\0365\34\CAD\Drawings\0365\34 Sheets

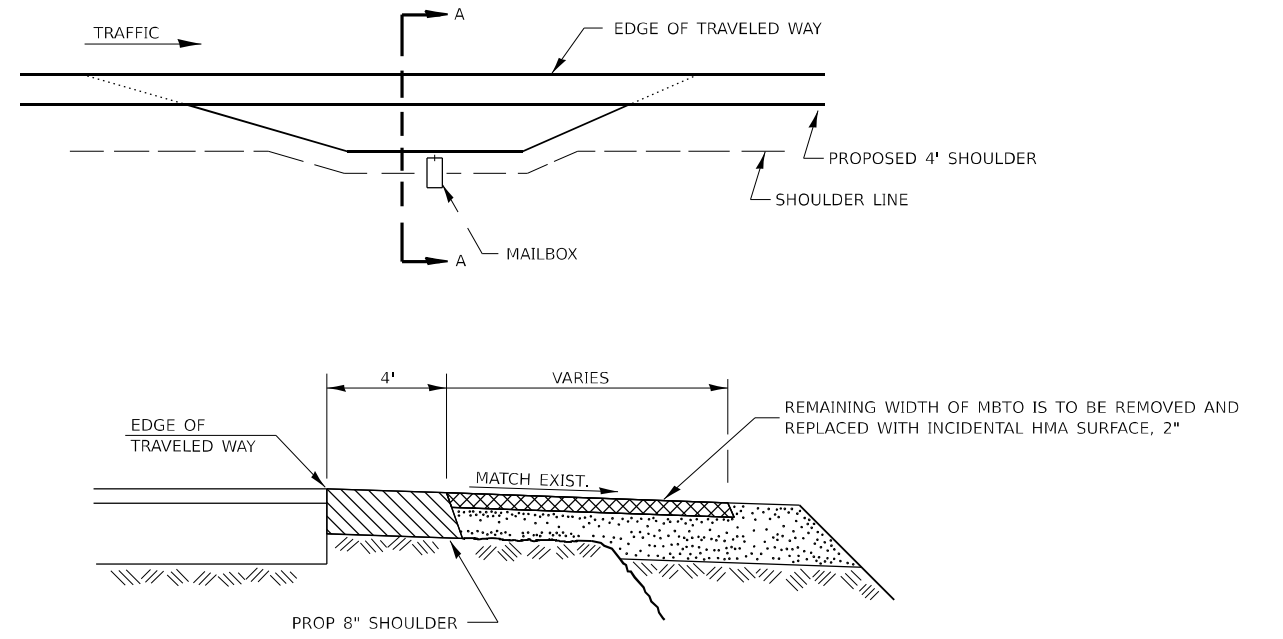
USER NAME = Brandon.Criss	DESIGNED - _____	REVISED - _____
DRAWN - _____	REVISED - _____	
PLOT SCALE = 0.16666833' / in.	CHECKED - _____	REVISED - _____
PLOT DATE = 10/19/2023	DATE - _____	REVISED - _____

**STATE OF ILLINOIS
DEPARTMENT OF TRANSPORTATION**

DETAILS	
SCALE: 1"=50'	SHEET 1 OF 2 SHEETS STA. ___+___ TO STA. ___+___

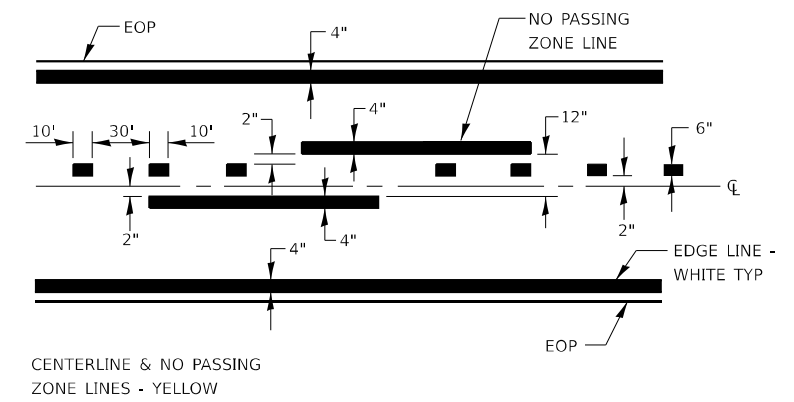
F.A.P. RTE. 649	SECTION (108)SFY	COUNTY *	TOTAL SHEETS 9	SHEET NO. 8
CONTRACT NO. 66N34			ILLINOIS FED. AID PROJECT	

*LASALLE / LIVINGSTON



SECTION A-A

RURAL MAILBOX TURNOUT DETAILS



PAVEMENT MARKING

MODEL: DETAIL S.2 (Rural) FILE NAME: P:\MIDOT\Documents\DOT Office\District 3\ORD Project\0365\34\CADD\0365\34 Streets

USER NAME = Brandon.Criss	DESIGNED - _____	REVISED - _____
DRAWN - _____	REVISED - _____	
PLOT SCALE = 0.16666633' / in.	CHECKED - _____	REVISED - _____
PLOT DATE = 10/19/2023	DATE - _____	REVISED - _____

**STATE OF ILLINOIS
DEPARTMENT OF TRANSPORTATION**

DETAILS			
SCALE: 1"=50'	SHEET 2	OF 2 SHEETS	STA. ___+___ TO STA. ___+___

F.A.P. RTE. 649	SECTION (108)SFY	COUNTY *	TOTAL SHEETS 9	SHEET NO. 9
ILLINOIS FED. AID PROJECT			CONTRACT NO. 66N34	

*LASALLE / LIVINGSTON