

STATE OF ILLINOIS
DEPARTMENT OF TRANSPORTATION

F.A.S RTE.	SECTION	COUNTY	TOTAL SHEETS	SHEET NO.
618	(B,N,O-15D) Q	SANGAMON	21	1
		ILLINOIS	CONTRACT NO. 72293	

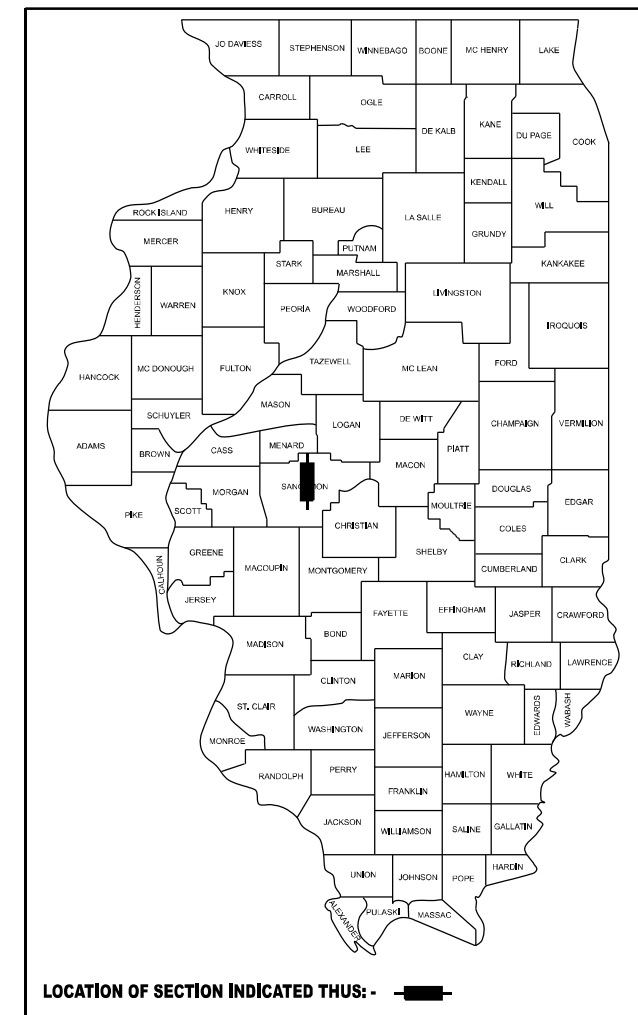
FOR INDEX OF SHEETS, SEE SHEET NO. 2

PROPOSED HIGHWAY PLANS

FAS ROUTE 618 (IL 124)
SECTION (B,N,O-15D)Q
PROJECT STP-4RDW(716)
MILLING, CAPE SEAL AND FOG SEAL
SANGAMON COUNTY

C-96-047-23

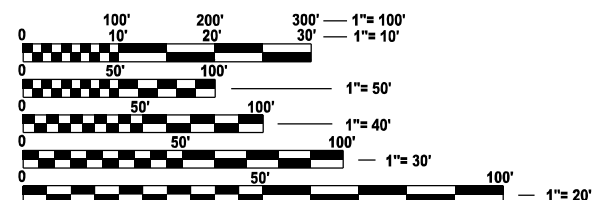
D-96-009-23



ROADWAY CLASSIFICATION
MAJOR COLLECTOR

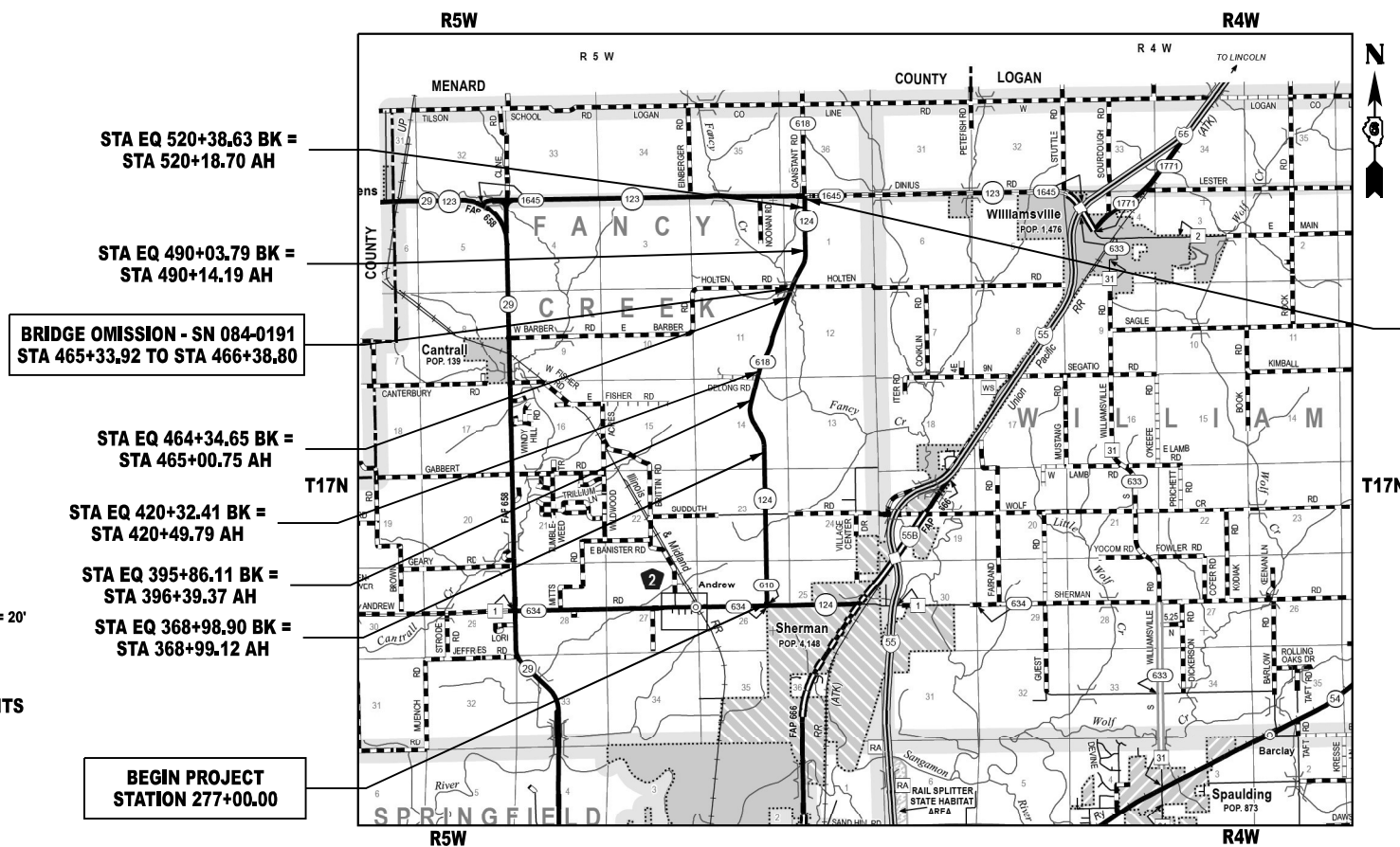
AVERAGE DAILY TRAFFIC YEAR 2021

ANDREW ROAD TO SUDDUTH ROAD
ADT: 1,050 (MU=0.57%, SU=2.86%, PV=96.57%)
SUDDUTH ROAD TO IL 123
ADT: 825 (MU=0.85%, SU=2.42%, PV=96.73%)



FULL SIZE PLANS HAVE BEEN PREPARED USING STANDARD ENGINEERING SCALES. REDUCED SIZED PLANS WILL NOT CONFORM TO STANDARD SCALES. IN MAKING MEASUREMENTS ON REDUCED PLANS, THE ABOVE SCALES MAY BE USED.

J.U.L.I.E.
JOINT UTILITY LOCATION INFORMATION FOR EXCAVATION
1-800-892-0123
OR 811



PROJECT ENGINEER - JON KELLEY - (217) 785-2739
PROJECT MANAGER - CHRIS SIEFERT - (217) 524-7940

GROSS LENGTH = 24,576.34 FT. = 4.655 MILE
NET LENGTH = 24,471.47 FT. = 4.635 MILE

CONTRACT NO. 72293

STATE OF ILLINOIS
DEPARTMENT OF TRANSPORTATION

SUBMITTED October 19 20 23

Jeffrey P. Murray REGIONAL ENGINEER
December 8, 2023

Scott A. Etkin ENGINEER OF DESIGN AND ENVIRONMENT
December 8, 2023

Stephen M. Spaulding DIRECTOR OF HIGHWAYS PROJECT IMPLEMENTATION

**PRINTED BY THE AUTHORITY
OF THE STATE OF ILLINOIS**

				CONSTR. CODE	
				PPS# 6-01493-0000	
				STP FUNDING	
				80% FED / 20% STATE	
CODE NO.	ITEM	UNIT	TOTAL QUANTITY	ROADWAY	
				0005	RURAL
4050001	FIBER-MODIFIED ASPHALT CRACK SEALING	FOOT	24418	24418	
4050061	CAPE SEAL	SQ YD	59688	59688	
6700400	ENGINEER'S FIELD OFFICE, TYPE A	CAL MO	6	6	
67100100	MOBILIZATION	L SUM	1	1	
70100450	TRAFFIC CONTROL AND PROTECTION, STANDARD 701201	L SUM	1	1	
70100460	TRAFFIC CONTROL AND PROTECTION, STANDARD 701306	L SUM	1	1	
70107025	CHANGEABLE MESSAGE SIGN	CAL DA	14	14	
70300100	SHORT TERM PAVEMENT MARKING	FOOT	7357	7357	
70300150	SHORT TERM PAVEMENT MARKING REMOVAL	SQ FT	2428	2428	
* 78001120	PAINT PAVEMENT MARKING - LINE 5"	FOOT	67109	67109	
* 78100100	RAISED REFLECTIVE PAVEMENT MARKER	EACH	319	319	
78300200	RAISED REFLECTIVE PAVEMENT MARKER REMOVAL	EACH	319	319	
X4060107	BITUMINOUS MATERIALS (FOG SEAL)	POUND	42487	42487	
X4400196	HOT-MIX ASPHALT SURFACE REMOVAL (SPECIAL)	SQ YD	59688	59688	

* SPECIALTY ITEM

MODEL: 7/2/2018 9:00 (Sheet)
 FILE NAME: P:\2023\Projects\DOT\Documents\DOT\Office\District 6\ORBD\Projects\72293\CA\Draws\CA\Draws\672293-SDO.dgn

USER NAME = Christopher.Siefert	DESIGNED -	REVISED -
	DRAWN -	REVISED -
PLOT SCALE = 0.16666633 1/ in.	CHECKED -	REVISED -
PLOT DATE = 10/18/2023	DATE -	REVISED -

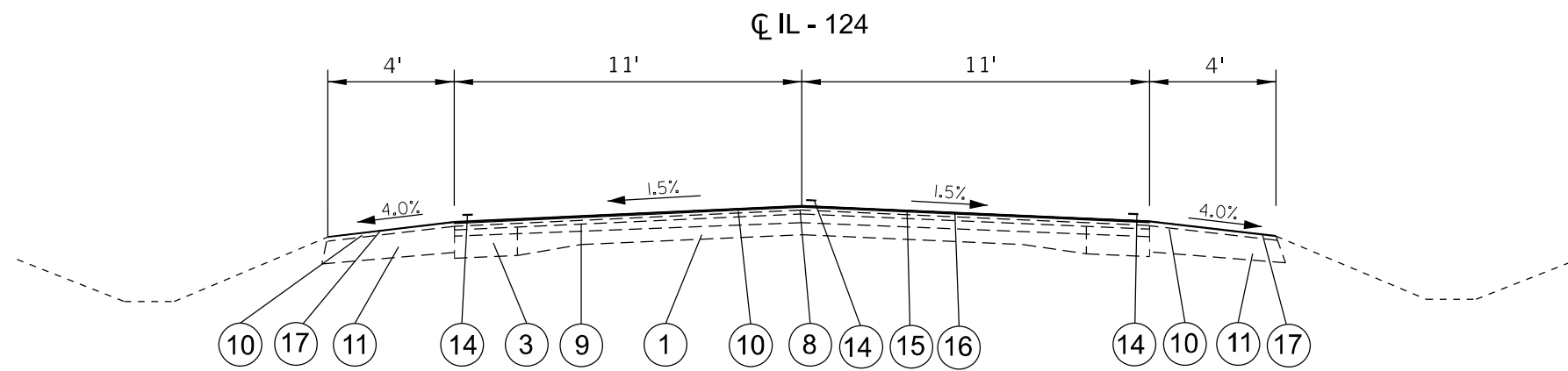
**STATE OF ILLINOIS
DEPARTMENT OF TRANSPORTATION**

SUMMARY OF QUANTITIES

SCALE: SHEET OF SHEETS STA. TO STA.

F.A.S. RTE.	SECTION	COUNTY	TOTAL SHEETS	SHEET NO.
618	(B,N,O-15D)Q	SANGAMON	21	3
CONTRACT NO. 72293			ILLINOIS FED. AID PROJECT	

LONG SECTION NUMBER:
MULTIPLE COUNTIES:



TYPICAL SECTION - IL 124
 STA 277+00 TO STA 365+00

LEGEND

- ① EXISTING PCC PAVEMENT (9-6-9) & 6" BIT OVERLAY
- ② EXISTING PCC PAVEMENT (9-6-9) & 5 1/2" BIT OVERLAY
- ③ EXISTING HMA BASE COURSE 9" & 3" HMA OVERLAY
- ④ EXISTING HMA BASE COURSE 8" & 3" HMA OVERLAY
- ⑤ EXISTING ROCKFILL AND CAPSTONE 15"
- ⑥ EXISTING HMA PAVEMENT, 11 1/4" B BINDER, 1 1/2" C SURFACE
- ⑦ EXISTING HMA SHOULDERS 8"
- ⑧ EXISTING HMA OVERLAY - 2 1/4"
- ⑨ LEVELING BINDER COURSE - 3/4"
- ⑩ HMA SURFACE COURSE - 1 1/2"
- ⑪ HMA SHOULDERS - 6 1/2"
- ⑫ HMA SHOULDERS - 8"
- ⑬ EXISTING AGGREGATE SHOULDER, TY-B
- ⑭ PROPOSED PAVEMENT MARKING LINE, 5"
- ⑮ PROPOSED FINE MILLING 1/2"
- ⑯ PROPOSED CAPE SEAL
- ⑰ PROPOSED FOG SEAL

NOTE: STRIPE ALL PAVEMENT FOR 11'
 LANES WITH 4' SHOULDERS

MODEL: Typical Section / (Sheet)
 FILE NAME: P:\Bids\2023\2023-2024\DOT\Office\District 6\ORD Project\B72293\CADD\Drawings\CAD\Sheet\B72293-1-Typical Sections.dgn

USER NAME = Christopher.Stiefert	DESIGNED -	REVISED -
	DRAWN -	REVISED -
PLOT SCALE = 0.16666633' / in.	CHECKED -	REVISED -
PLOT DATE = 10/19/2023	DATE -	REVISED -

STATE OF ILLINOIS
DEPARTMENT OF TRANSPORTATION

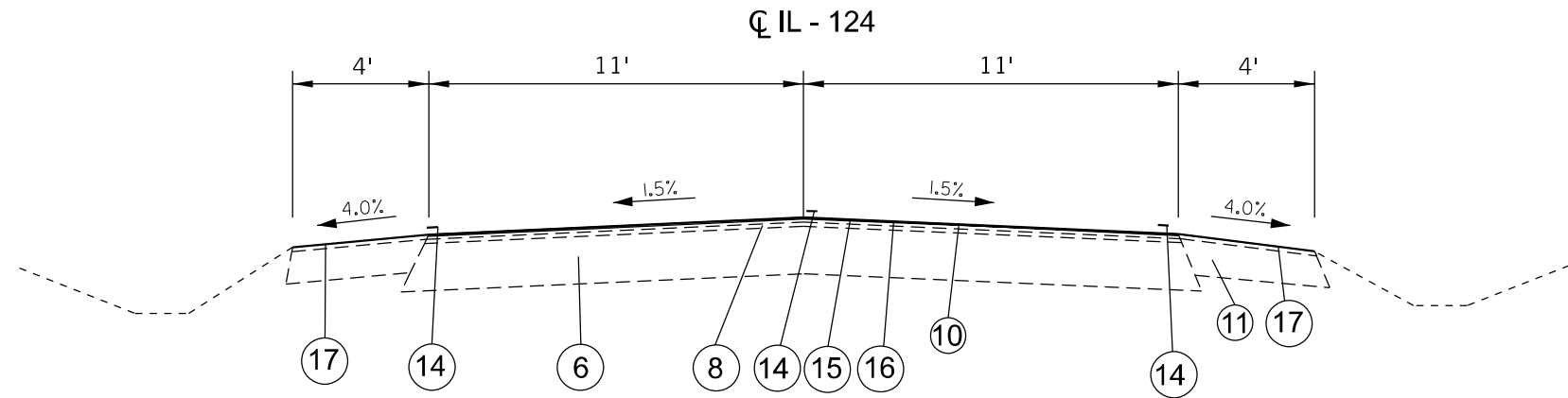
TYPICAL SECTIONS
IL 124

SCALE: SHEET OF SHEETS STA. TO STA.

F.A.S. RTE.	SECTION	COUNTY	TOTAL SHEETS	SHEET NO.
618	(B.N.O-15D) Q	SANGAMON	21	4
CONTRACT NO. 72293				

LONG SECTION NUMBER:
 MULTIPLE COUNTIES:

ILLINOIS FED. AID PROJECT



TYPICAL SECTION - IL 124

STA 365+00 TO STA 368+98.90 (BK) = STA 368+99.12 (AH)
 STA 368+99.12 TO STA 371+50
 STA 375+43 TO STA 377+80
 STA 406+17.42 TO STA 408+60

LEGEND

- (1) EXISTING PCC PAVEMENT (9-6-9) & 6" BIT OVERLAY
- (2) EXISTING PCC PAVEMENT (9-6-9) & 5 1/2" BIT OVERLAY
- (3) EXISTING HMA BASE COURSE 9" & 3" HMA OVERLAY
- (4) EXISTING HMA BASE COURSE 8" & 3" HMA OVERLAY
- (5) EXISTING ROCKFILL AND CAPSTONE 15"
- (6) EXISTING HMA PAVEMENT, 11 1/4" B BINDER, 1 1/2" C SURFACE
- (7) EXISTING HMA SHOULDERS 8"
- (8) EXISTING HMA OVERLAY - 2 1/4"
- (9) LEVELING BINDER COURSE - 3/4"
- (10) HMA SURFACE COURSE - 1 1/2"
- (11) HMA SHOULDERS - 6 1/2"
- (12) HMA SHOULDERS - 8"
- (13) EXISTING AGGREGATE SHOULDER, TY-B
- (14) PROPOSED PAVEMENT MARKING LINE, 5"
- (15) PROPOSED FINE MILLING 1/2"
- (16) PROPOSED CAPE SEAL
- (17) PROPOSED FOG SEAL

NOTE: STRIPE ALL PAVEMENT FOR 11'
 LANES WITH 4' SHOULDERS

MODEL: Typical Section 2 (Sheet)
 FILE NAME: P:\Bids\2023\11\DOT\Office\District 6\ORD Project\B72293\CADD\B72293-Typical Sections.dgn

USER NAME = Christopher.Stiefert	DESIGNED -	REVISED -
	DRAWN -	REVISED -
PLOT SCALE = 0.16666633' / in.	CHECKED -	REVISED -
PLOT DATE = 10/18/2023	DATE -	REVISED -

**STATE OF ILLINOIS
 DEPARTMENT OF TRANSPORTATION**

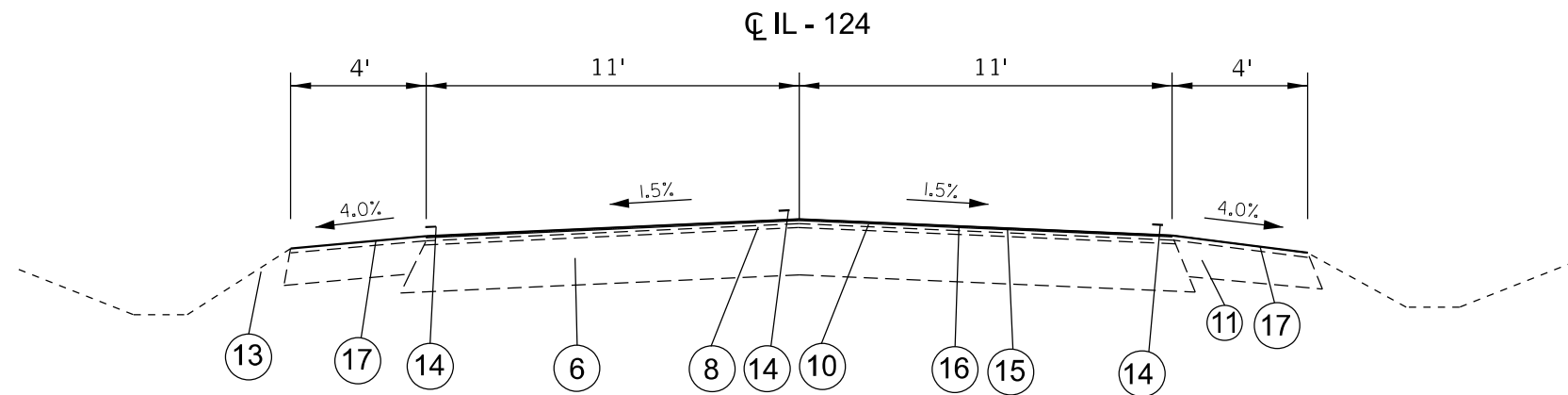
**TYPICAL SECTIONS
 IL 124**

SCALE: SHEET OF SHEETS STA. TO STA.

F.A.S RTE.	SECTION	COUNTY	TOTAL SHEETS	SHEET NO.
618	(B.N.O-15D) Q	SANGAMON	21	5
CONTRACT NO. 72293				

LONG SECTION NUMBER:
 MULTIPLE COUNTIES:

ILLINOIS FED. AID PROJECT



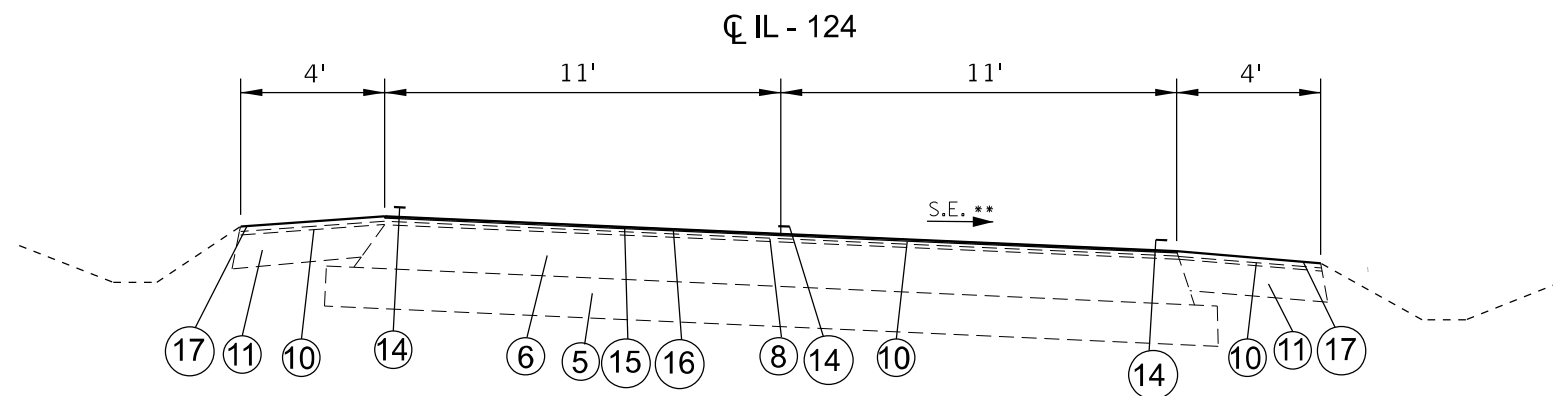
NOTE: STRIPE ALL PAVEMENT FOR 11' LANES WITH 4' SHOULDERS

TYPICAL SECTION - IL 124

STA 416+94 TO STA 420+32.41 (BK) = STA 420+49.79 (AH)
 STA 482+92.57 TO STA 485+29
 STA 487+67 TO STA 490+03.79 (BK) = STA 490+14.19 (AH)

LEGEND

- ① EXISTING PCC PAVEMENT (9-6-9) & 6" BIT OVERLAY
- ② EXISTING PCC PAVEMENT (9-6-9) & 5 1/2" BIT OVERLAY
- ③ EXISTING HMA BASE COURSE 9" & 3" HMA OVERLAY
- ④ EXISTING HMA BASE COURSE 8" & 3" HMA OVERLAY
- ⑤ EXISTING ROCKFILL AND CAPSTONE 15"
- ⑥ EXISTING HMA PAVEMENT, 11 1/4" B BINDER, 1 1/2" C SURFACE
- ⑦ EXISTING HMA SHOULDERS 8"
- ⑧ EXISTING HMA OVERLAY - 2 1/4"
- ⑨ LEVELING BINDER COURSE - 3/4"
- ⑩ HMA SURFACE COURSE - 1 1/2"
- ⑪ HMA SHOULDERS - 6 1/2"
- ⑫ HMA SHOULDERS - 8"
- ⑬ EXISTING AGGREGATE SHOULDER, TY-B
- ⑭ PROPOSED PAVEMENT MARKING LINE, 5"
- ⑮ PROPOSED FINE MILLING 1/2"
- ⑯ PROPOSED CAPE SEAL
- ⑰ PROPOSED FOG SEAL



TYPICAL SECTION - IL 124

STA 371+50 TO STA 375+43
 STA 377+80 TO STA 377+98.99
 STA 382+66.89 TO STA 395+86.11 (BK)=STA 396+39.37 (AH)
 STA 413+70.32 TO STA 416+94
 STA 470+94.59 TO STA 476+30
 STA 485+29 TO STA 486+00

MODEL: Typical Section 3 (Sheet)
 FILE NAME: P:\Bids\2023\11\DOT\Documents\DOT Office\District 6\ORD Project\B72293\CADD\Drawings\B72293-Typical Sections.dgn

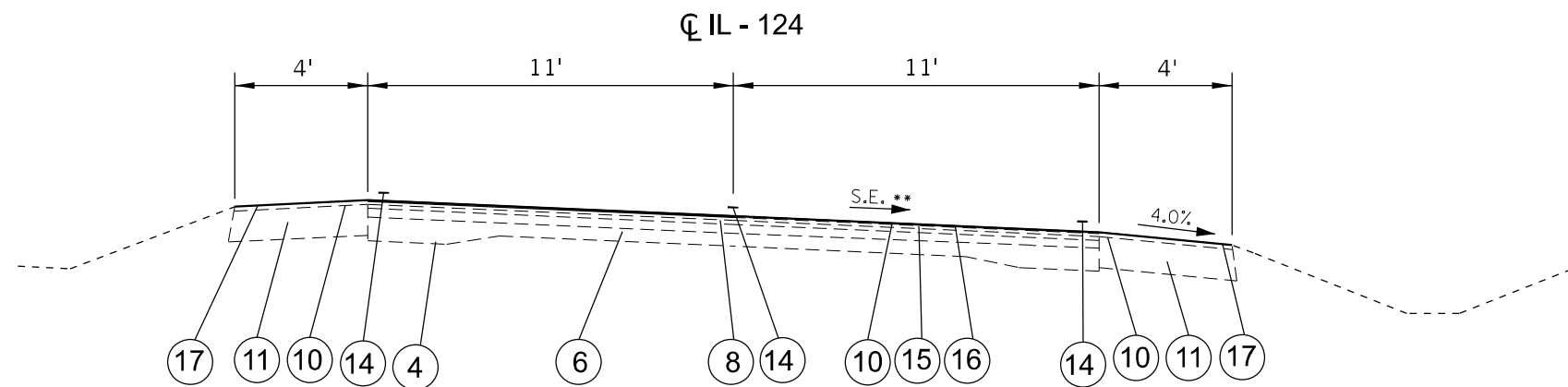
USER NAME = Christopher.Stiefert	DESIGNED -	REVISED -
	DRAWN -	REVISED -
PLOT SCALE = 0.16666833' / in.	CHECKED -	REVISED -
PLOT DATE = 10/18/2023	DATE -	REVISED -

**STATE OF ILLINOIS
 DEPARTMENT OF TRANSPORTATION**

TYPICAL SECTIONS IL 124			
SCALE:	SHEET	OF SHEETS	STA. TO STA.

F.A.S. RTE.	SECTION	COUNTY	TOTAL SHEETS	SHEET NO.
618	(B.N.O-15D) Q	SANGAMON	21	6
CONTRACT NO. 72293				
ILLINOIS FED. AID PROJECT				

LONG SECTION NUMBER:
 MULTIPLE COUNTIES:



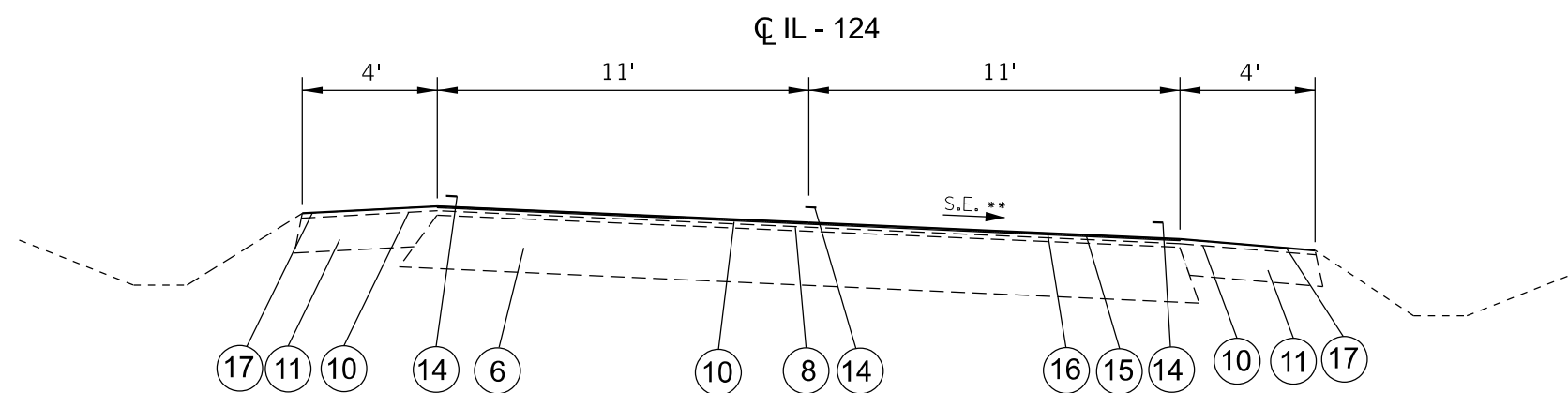
TYPICAL SECTION - IL 124

STA 396+39.37 TO STA 397+32.66
 STA 420+49.79 TO STA 421+79.01
 STA 428+50.52 TO STA 441+33.12
 STA 476+30 TO STA 477+14.81
 STA 481+45.93 TO STA 482+92.67
 STA 490+14.19 TO STA 491+49.99

NOTE: STRIPE ALL PAVEMENT FOR 11' LANES WITH 4' SHOULDERS

LEGEND

- ① EXISTING PCC PAVEMENT (9-6-9) & 6" BIT OVERLAY
- ② EXISTING PCC PAVEMENT (9-6-9) & 5 1/2" BIT OVERLAY
- ③ EXISTING HMA BASE COURSE 9" & 3" HMA OVERLAY
- ④ EXISTING HMA BASE COURSE 8" & 3" HMA OVERLAY
- ⑤ EXISTING ROCKFILL AND CAPSTONE 15"
- ⑥ EXISTING HMA PAVEMENT, 11 1/4" B BINDER, 1 1/2" C SURFACE
- ⑦ EXISTING HMA SHOULDERS 8"
- ⑧ EXISTING HMA OVERLAY - 2 1/4"
- ⑨ LEVELING BINDER COURSE - 3/4"
- ⑩ HMA SURFACE COURSE - 1 1/2"
- ⑪ HMA SHOULDERS - 6 1/2"
- ⑫ HMA SHOULDERS - 8"
- ⑬ EXISTING AGGREGATE SHOULDER, TY-B
- ⑭ PROPOSED PAVEMENT MARKING LINE, 5"
- ⑮ PROPOSED FINE MILLING 1/2"
- ⑯ PROPOSED CAPE SEAL
- ⑰ PROPOSED FOG SEAL



TYPICAL SECTION - IL 124

STA 486+00 TO STA 487+67

MODEL: Typical Section 7 (Sheet)
 FILE NAME: P:\Info\Projects\2023\CD\Drawings\DOT\Office\District\CORD\Project\0672293\CADD\Drawings\0672293-Typical Sections.dgn

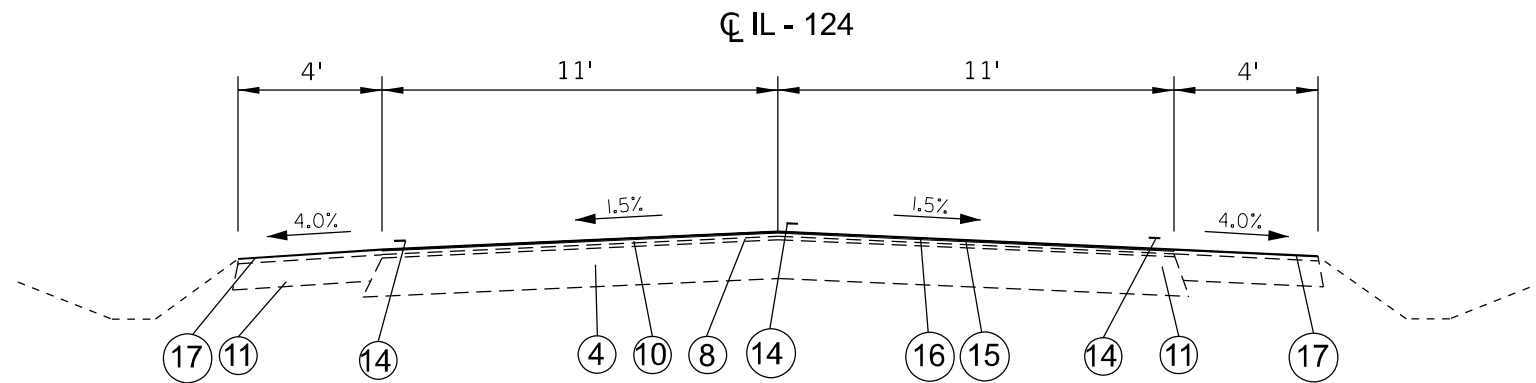
USER NAME = Christopher.Stiefert	DESIGNED -	REVISED -
DRAWN -	REVISED -	
PLOT SCALE = 0.16666633' / in.	CHECKED -	REVISED -
PLOT DATE = 10/18/2023	DATE -	REVISED -

**STATE OF ILLINOIS
 DEPARTMENT OF TRANSPORTATION**

TYPICAL SECTIONS IL 124			
SCALE:	SHEET	OF SHEETS	STA. TO STA.

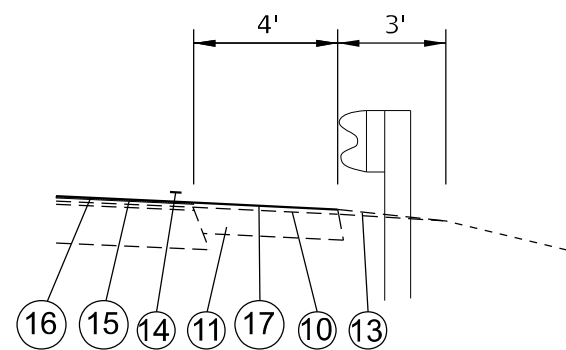
F.A.S RTE. 618	SECTION (B.N.O-15D) Q	COUNTY SANGAMON	TOTAL SHEETS 21	SHEET NO. 8
CONTRACT NO. 72293				
ILLINOIS FED. AID PROJECT				

LONG SECTION NUMBER:
 MULTIPLE COUNTIES:



TYPICAL SECTION - IL 124

STA 520+18.77 TO STA 522+95



GUARDRAIL SECTION

LEGEND

- ① EXISTING PCC PAVEMENT (9-6-9) & 6" BIT OVERLAY
- ② EXISTING PCC PAVEMENT (9-6-9) & 5 1/2" BIT OVERLAY
- ③ EXISTING HMA BASE COURSE 9" & 3" HMA OVERLAY
- ④ EXISTING HMA BASE COURSE 8" & 3" HMA OVERLAY
- ⑤ EXISTING ROCKFILL AND CAPSTONE 15"
- ⑥ EXISTING HMA PAVEMENT, 11 1/4" B BINDER, 1 1/2" C SURFACE
- ⑦ EXISTING HMA SHOULDERS 8"
- ⑧ EXISTING HMA OVERLAY - 2 1/4"
- ⑨ LEVELING BINDER COURSE - 3/4"
- ⑩ HMA SURFACE COURSE - 1 1/2"
- ⑪ HMA SHOULDERS - 6 1/2"
- ⑫ HMA SHOULDERS - 8"
- ⑬ EXISTING AGGREGATE SHOULDER, TY-B
- ⑭ PROPOSED PAVEMENT MARKING LINE, 5"
- ⑮ PROPOSED FINE MILLING 1/2"
- ⑯ PROPOSED CAPE SEAL
- ⑰ PROPOSED FOG SEAL

NOTE: STRIPE ALL PAVEMENT FOR 11' LANES WITH 4' SHOULDERS

MODEL: Typical Section 9 (Sheet)
FILE NAME: P:\Bids\2023\2023-2024\DOT\Office\District 6\ORD Project\B72293\CADD\Drawings\B72293-1-Typical Sections.dgn

USER NAME = Christopher.Stiefert	DESIGNED -	REVISED -
DRAWN -	REVISED -	
PLOT SCALE = 0.16666633' / in.	CHECKED -	REVISED -
PLOT DATE = 10/18/2023	DATE -	REVISED -

**STATE OF ILLINOIS
DEPARTMENT OF TRANSPORTATION**

**TYPICAL SECTIONS
IL 124**

SCALE: SHEET OF SHEETS STA. TO STA.

F.A.S RTE.	SECTION	COUNTY	TOTAL SHEETS	SHEET NO.
618	(B.N.O-15D) Q	SANGAMON	21	9
CONTRACT NO. 72293				

LONG SECTION NUMBER:
MULTIPLE COUNTIES:

ILLINOIS FED. AID PROJECT

MILLING AND CAPE SEAL

STA.		STA.			SIDE LT/RT	LENGTH (FOOT)	WIDTH (FOOT)	X4400196 HOT-MIX ASPHALT SURFACE REMOVAL (SPECIAL) (SQ YD)	40500001 FIBER-MODIFIED CRACK SEALING (FOOT)	X4060107 BIT MATLS (FOG SEAL) (POUND)	40500061 CAPE SEAL (SQ YD)
IL 124											
277+00.00		to	368+98.90	BK=	LT & RT	9,199	22	22,486	9,199	10,119	22,486
368+99.12	AH	to	395+86.11	BK=	LT & RT	2,687	22	6,568	2,687	2,956	6,568
396+39.37	AH	to	420+32.41	BK=	LT & RT	2,393	22	5,850	2,393	2,632	5,850
420+49.79	AH	to	464+34.65	BK=	LT & RT	4,385	22	10,719	4,385	4,823	10,719
465+00.75	AH	to	465+33.91		LT & RT	33	22	81	33	36	81
Bridge Omission		465+33.91 TO	466+38.79		LT & RT						0
466+38.79		to	490+03.79	BK=	LT & RT	2,365	22	5,781	2,365	2,602	5,781
490+14.19	AH	to	520+38.63	BK=	LT & RT	3,024	22	7,393	3,024	3,327	7,393
520+18.70	AH	to	523+50.22		LT & RT	332	22	810	332	365	810
TOTALS=								59,688	24,418	26,860	59,688

FOG SEAL SHOULDERS

STA.		STA.			SIDE LT/RT	LENGTH (FOOT)	WIDTH (FOOT)	X4060107 BIT MATLS (FOG SEAL) (POUND)
IL 124								
277+00.00		to	368+98.90	BK=	LT & RT	9,199	8	5,887
368+99.12	AH	to	395+86.11	BK=	LT & RT	2,687	8	1,720
396+39.37	AH	to	420+32.41	BK=	LT & RT	2,393	8	1,532
420+49.79	AH	to	464+34.65	BK=	LT & RT	4,385	8	2,806
465+00.75	AH	to	465+33.91		LT & RT	33	8	21
Bridge Omission		465+33.91 TO	466+38.79		LT & RT			
466+38.79		to	490+03.79	BK=	LT & RT	2,365	8	1,514
490+14.19	AH	to	520+38.63	BK=	LT & RT	3,024	8	1,936
520+18.70	AH	to	523+50.22		LT & RT	332	8	212
TOTALS=								15,627

MODEL: 72293_Schedule (Sheet)
 FILE NAME: P:\GIS\Projects\DOT\Office\District 6\ORD Project\B72293\CADD\Drawings\DOT\B72293-Schedule.dgn

USER NAME = Christopher.Stiefert	DESIGNED -	REVISED -	
	DRAWN -	REVISED -	
PLOT SCALE = 0.16666633' / in.	CHECKED -	REVISED -	
PLOT DATE = 10/19/2023	DATE -	REVISED -	

**STATE OF ILLINOIS
DEPARTMENT OF TRANSPORTATION**

SCHEDULE OF QUANTITIES			
SCALE:	SHEET	OF SHEETS	STA. TO STA.

F.A.S RTE. 618	SECTION (B.N.O-15D) Q	COUNTY SANGAMON	TOTAL SHEETS 21	SHEET NO. 10	CONTRACT NO. 72293
ILLINOIS FED. AID PROJECT					

STRIPING SCHEDULE

				78001120 PAINT PAVEMENT MARKING - LINE 5" (FOOT)					70300100 SHORT-TERM PVT MKG (FOOT)	70300150 SHORT-TERM PVT MKG REM (SQ FT)	78100100 RAISED REFL PVT MKR (EACH)	78300200 RAISED REFL PVT MKR REM (EACH)
		LENGTH (FOOT)	LT LANE LINE	CENTER LINE			RT LANE LINE					
STA.	STA.		WHITE	YELLOW SKIP DASH	DOUBLE YELLOW	YELLOW	WHITE					
IL 124												
277+00.00	to	366+34.54	8,935	8,935	2,234			8,935	2,680	885	113	113
366+34.54	to	368+98.90 BK=	264	264	264			264	79	26	4	4
368+99.12	AH to	395+86.11 BK=	2,687	2,687	2,687			2,687	806	266	35	35
396+39.37	AH to	420+32.41 BK=	2,393	2,393	2,393			2,393	718	237	31	31
420+49.79	AH to	450+05.33	2,956	2,956	2,956			2,956	887	293	38	38
450+05.33	to	460+79.44	1,074	1,074	269		1,074	1,074	322	106	14	14
460+79.44	to	464+34.65 BK=	355	355	89			355	107	35	5	5
465+00.75	AH to	465+01.82	1	1				1	0	0	1	1
465+01.82	to	474+61.76	960	960	240		960	960	288	95	13	13
474+61.76	to	490+03.79 BK=	1,542	1,542	1,542			1,542	463	153	20	20
490+14.19	AH to	520+38.63 BK=	3,024	3,024	3,024			3,024	907	299	39	39
520+18.70	AH to	523+50.22	332	332	332			332	99	33	5	5
TOTAL=				67,109					7,357	2,428	319	319

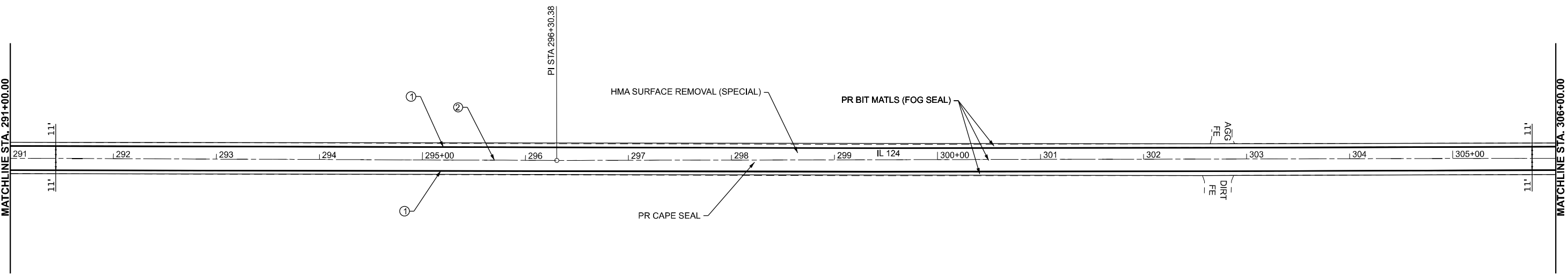
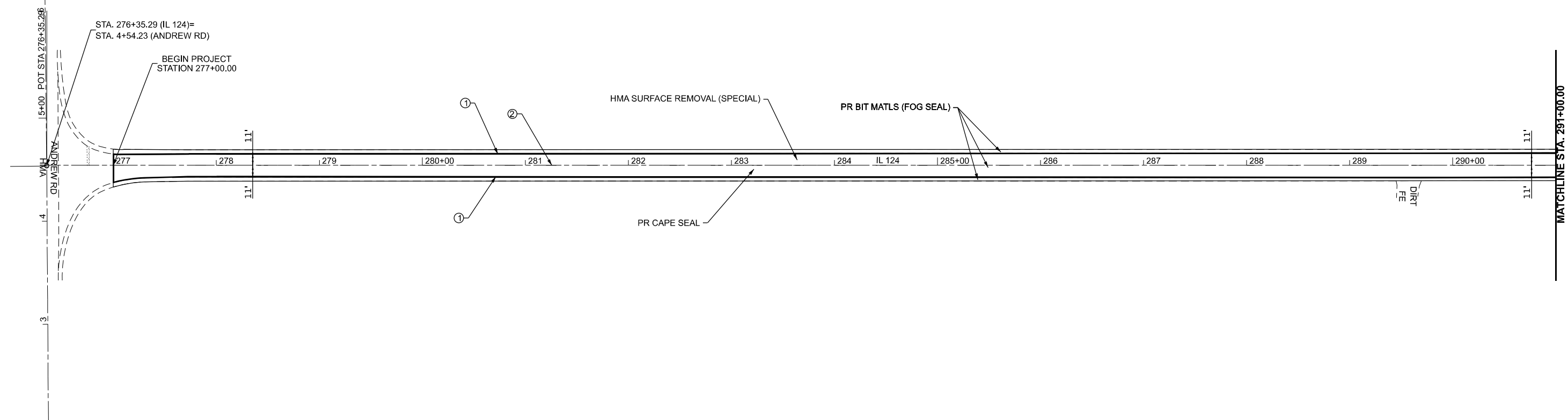
MODEL: 72293_Schedule.dwg - 1 Sheet
 FILE NAME: P:\Bids\2023\72293\Documents\DOT Office\District 6\ORD Project\B72293\CADD\B72293-Schedule.dwg

USER NAME = Christopher.Stiefert	DESIGNED -	REVISED -
	DRAWN -	REVISED -
PLOT SCALE = 0.16666633' / in.	CHECKED -	REVISED -
PLOT DATE = 10/19/2023	DATE -	REVISED -

**STATE OF ILLINOIS
DEPARTMENT OF TRANSPORTATION**

SCHEDULE OF QUANTITIES				
SCALE:	SHEET	OF	SHEETS	STA. TO STA.

F.A.S RTE.	SECTION	COUNTY	TOTAL SHEETS	SHEET NO.
618	(B.N.O-15D) Q	SANGAMON	21	11
CONTRACT NO. 72293				
ILLINOIS FED. AID PROJECT				



- PAVEMENT MARKING LEGEND**
- ① PR PAINT PAVEMENT MARKING (WHITE) - LINE 5"
 - ② PR PAINT PAVEMENT MARKING (SKIP-DASH YELLOW) - LINE 5"
 - ③ PR PAINT PAVEMENT MARKING (DOUBLE YELLOW) - LINE 5"
 - ④ PR PAINT PAVEMENT MARKING (YELLOW) - LINE 5"

MODEL: E:\C14 - Plan 1 (Sheet)
 FILE NAME: P:\Bids\p1000000000\DOT\Office\District 6\ORD Project\B72293\CADD\Drawings\B72293-Plan.dwg

USER NAME = Christopher.Siefert	DESIGNED -	REVISED -
DRAWN -	REVISIONS -	
PLOT SCALE = 0.16666633' / in.	CHECKED -	REVISED -
PLOT DATE = 10/19/2023	DATE -	REVISED -

**STATE OF ILLINOIS
DEPARTMENT OF TRANSPORTATION**

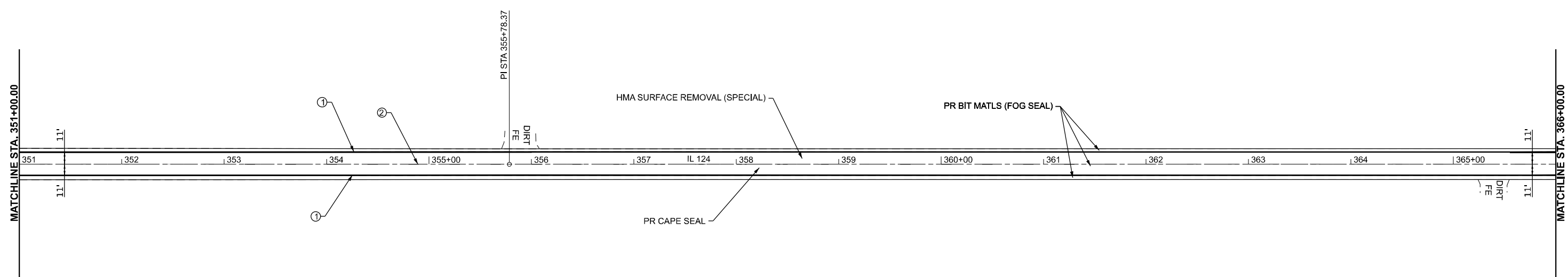
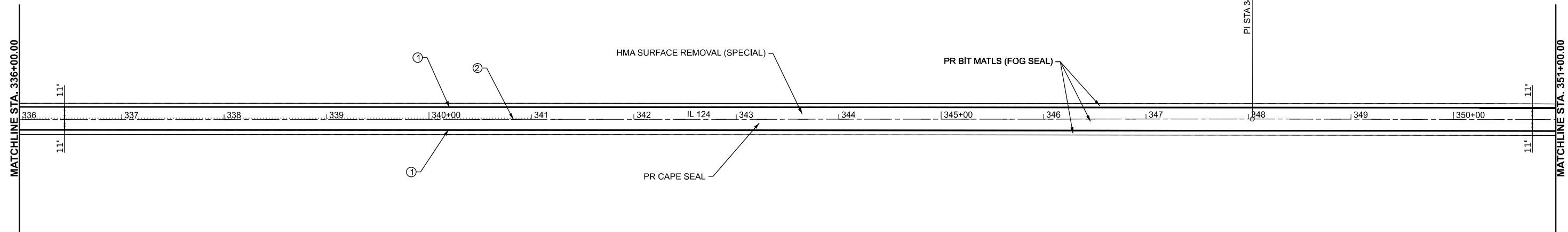
**PLAN SHEET
IL 124**

SCALE: 1"=50' SHEET OF SHEETS STA. TO STA.

F.A.S. RTE.	SECTION	COUNTY	TOTAL SHEETS	SHEET NO.
618	(B,N,Q-15D) Q	SANGAMON	21	12
CONTRACT NO. 72293				

LONG SECTION NUMBER:
MULTIPLE COUNTIES:

ILLINOIS FED. AID PROJECT



PAVEMENT MARKING LEGEND

- ① PR PAINT PAVEMENT MARKING (WHITE) - LINE 5"
- ② PR PAINT PAVEMENT MARKING (SKIP-DASH YELLOW) - LINE 5"
- ③ PR PAINT PAVEMENT MARKING (DOUBLE YELLOW) - LINE 5"
- ④ PR PAINT PAVEMENT MARKING (YELLOW) - LINE 5"

MODEL: E:\C14 - Plan 5 (Sheet)
 FILE NAME: P:\Bids\pcc\sb\1\com\p\DOT\Documents\DOT Office\Dist1\CORD Project\B72293\CADD\Info\CAD\Sheet\B72293-Plan.dgn

USER NAME = Christopher.Siefert	DESIGNED -	REVISED -
DRAWN -	DRAWN -	REVISED -
PLOT SCALE = 0.16666633' / in.	CHECKED -	REVISED -
PLOT DATE = 10/18/2023	DATE -	REVISED -

**STATE OF ILLINOIS
DEPARTMENT OF TRANSPORTATION**

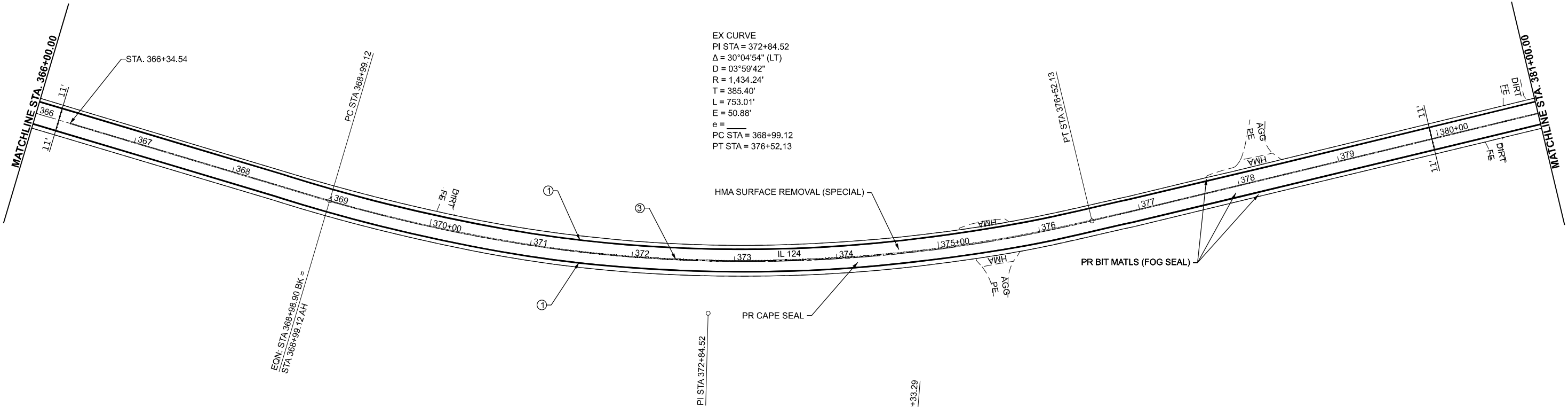
**PLAN SHEET
IL 124**

SCALE: 1"=50' SHEET OF SHEETS STA. TO STA.

F.A.S. RTE.	SECTION	COUNTY	TOTAL SHEETS	SHEET NO.
618	(B,N,Q-15D) Q	SANGAMON	21	14
CONTRACT NO. 72293				

LONG SECTION NUMBER:
MULTIPLE COUNTIES:

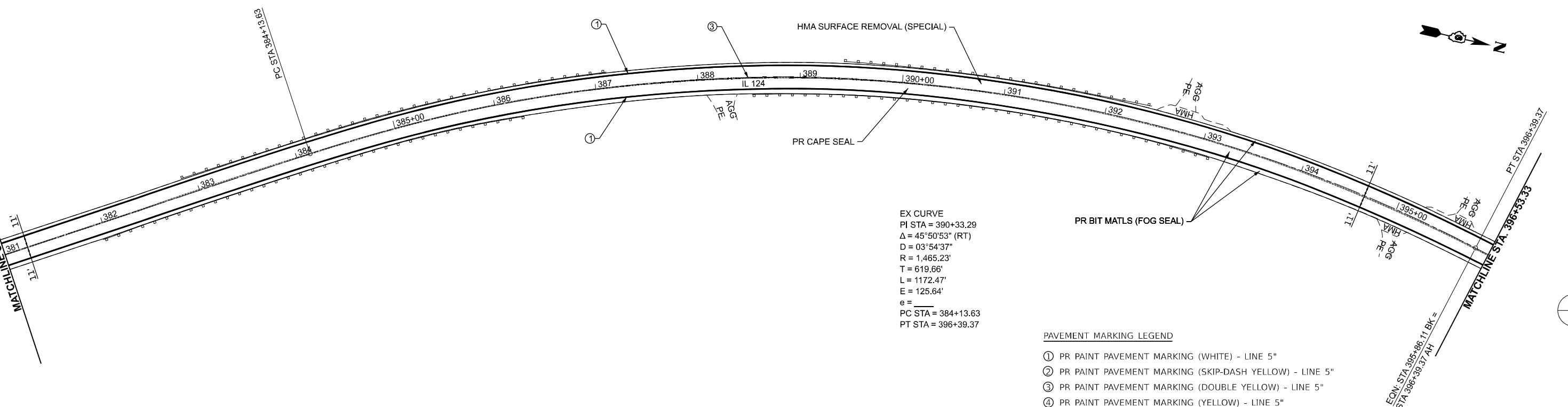
ILLINOIS FED. AID PROJECT



EX CURVE
 PI STA = 372+84.52
 $\Delta = 30^{\circ}04'54''$ (LT)
 $D = 03^{\circ}59'42''$
 $R = 1,434.24'$
 $T = 385.40'$
 $L = 753.01'$
 $E = 50.88'$
 $e =$
 PC STA = 368+99.12
 PT STA = 376+52.13

EQN: STA 368+08.90 BK =
 STA 368+99.12 AH

PI STA 390+33.29



EX CURVE
 PI STA = 390+33.29
 $\Delta = 45^{\circ}50'53''$ (RT)
 $D = 03^{\circ}54'37''$
 $R = 1,465.23'$
 $T = 619.66'$
 $L = 1172.47'$
 $E = 125.64'$
 $e =$
 PC STA = 384+13.63
 PT STA = 396+39.37

EQN: STA 384+13.63 BK =
 STA 384+99.12 AH

- PAVEMENT MARKING LEGEND
- ① PR PAINT PAVEMENT MARKING (WHITE) - LINE 5"
 - ② PR PAINT PAVEMENT MARKING (SKIP-DASH YELLOW) - LINE 5"
 - ③ PR PAINT PAVEMENT MARKING (DOUBLE YELLOW) - LINE 5"
 - ④ PR PAINT PAVEMENT MARKING (YELLOW) - LINE 5"

EQN: STA 395+86.11 BK =
 STA 396+39.37 AH

MODEL: E:\CL14_Plan 7 (Sheet)
 FILE NAME: P:\Bids\pcc\14\14_Plan 7 (Sheet).dgn
 PROJECT: I:\DOT\Projects\14\14_Plan 7 (Sheet)\14_Plan 7 (Sheet).dgn

USER NAME = Christopher.Siefert	DESIGNED -	REVISED -
PLOT SCALE = 0.16666633' / in.	DRAWN -	REVISED -
PLOT DATE = 10/18/2023	CHECKED -	REVISED -
	DATE -	REVISED -

**STATE OF ILLINOIS
 DEPARTMENT OF TRANSPORTATION**

PLAN SHEET IL 124			
SCALE: 1"=50'	SHEET	OF SHEETS	STA. TO STA.

F.A.S. RTE.	SECTION	COUNTY	TOTAL SHEETS	SHEET NO.
618	(B,N,O-15D) Q	SANGAMON	21	15
CONTRACT NO. 72293				

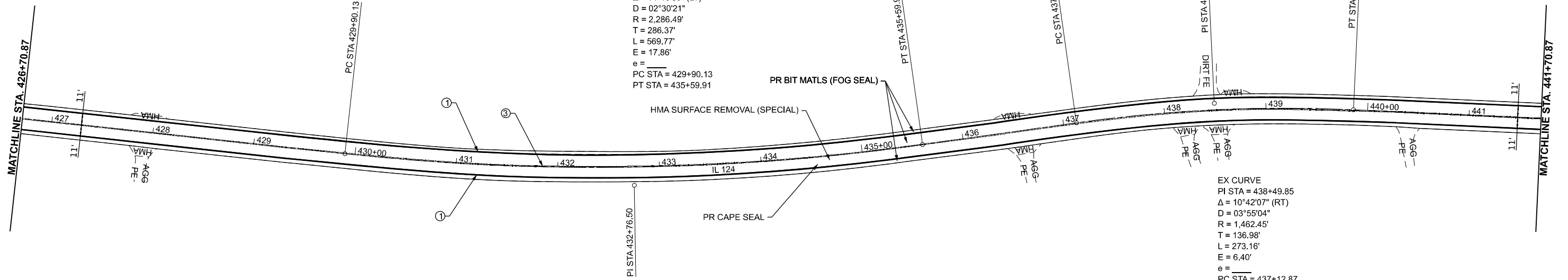
LONG SECTION NUMBER:
 MULTIPLE COUNTIES:

ILLINOIS FED. AID PROJECT

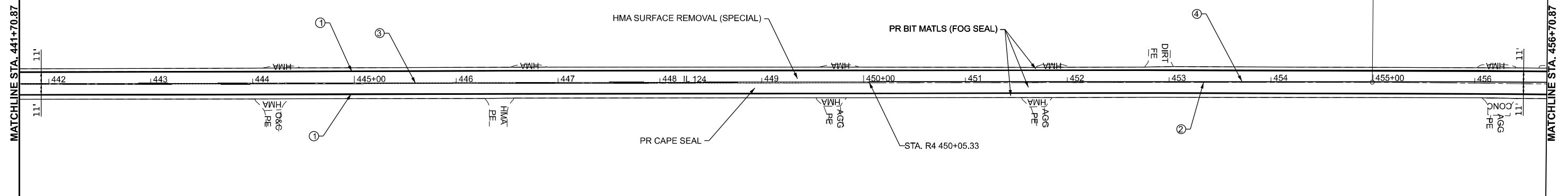


EX CURVE
 PI STA = 432+76.50
 $\Delta = 14^{\circ}16'39"$ (LT)
 $D = 02^{\circ}30'21"$
 $R = 2,286.49'$
 $T = 286.37'$
 $L = 569.77'$
 $E = 17.86'$
 $e =$
 PC STA = 429+90.13
 PT STA = 435+59.91

EX CURVE
 PI STA = 438+49.85
 $\Delta = 10^{\circ}42'07"$ (RT)
 $D = 03^{\circ}55'04"$
 $R = 1,462.45'$
 $T = 136.98'$
 $L = 273.16'$
 $E = 6.40'$
 $e =$
 PC STA = 437+12.87
 PT STA = 439+86.03



HMA SURFACE REMOVAL (SPECIAL)
 PR BIT MATLS (FOG SEAL)
 PR CAPE SEAL
 STA. R4 450+05.33



PAVEMENT MARKING LEGEND

- ① PR PAINT PAVEMENT MARKING (WHITE) - LINE 5"
- ② PR PAINT PAVEMENT MARKING (SKIP-DASH YELLOW) - LINE 5"
- ③ PR PAINT PAVEMENT MARKING (DOUBLE YELLOW) - LINE 5"
- ④ PR PAINT PAVEMENT MARKING (YELLOW) - LINE 5"

MODEL: E:\C14 - Plan 11 (Sheet)
 FILE NAME: P:\Bids\p1000000000\DOT Documents\DOT Office\District 6\ORD Project\B72293\CADD\Drawings\B72293-Plan.dgn

USER NAME = Christopher.Siefert	DESIGNED -	REVISED -
PLOT SCALE = 0.16666633' / in.	DRAWN -	REVISED -
PLOT DATE = 10/18/2023	CHECKED -	REVISED -
	DATE -	REVISED -

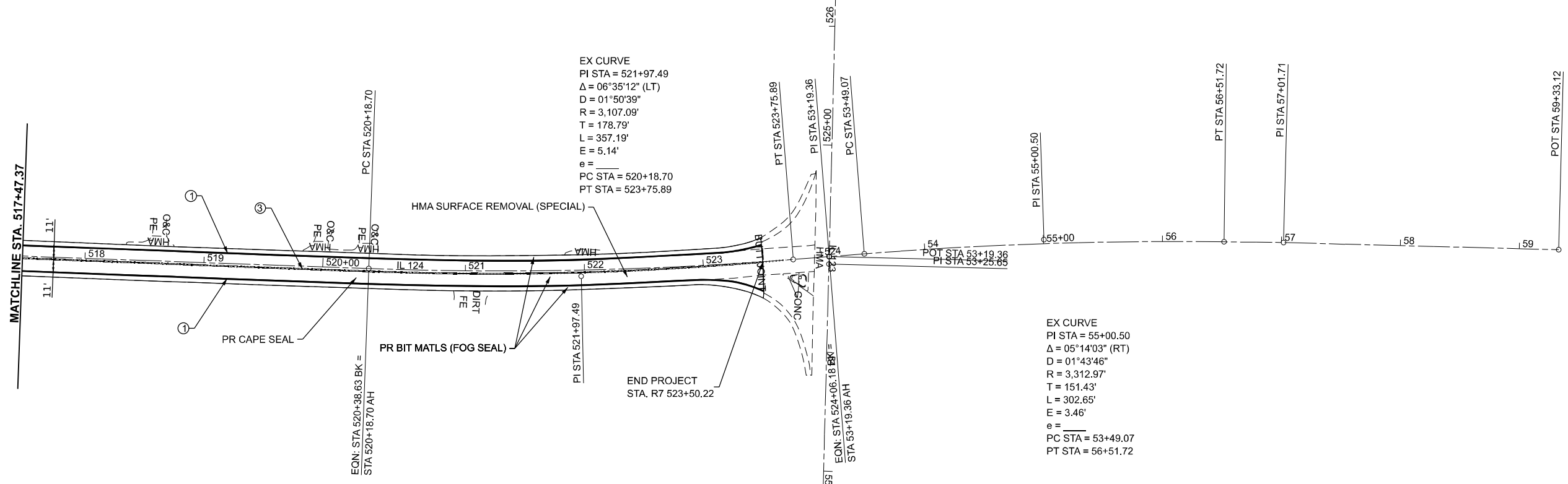
STATE OF ILLINOIS
 DEPARTMENT OF TRANSPORTATION

PLAN SHEET
 IL 124

SCALE: 1"=50' SHEET OF SHEETS STA. TO STA.

F.A.S. RTE.	SECTION	COUNTY	TOTAL SHEETS	SHEET NO.
618	(B,N,Q-15D) Q	SANGAMON	21	17
CONTRACT NO. 72293			ILLINOIS FED. AID PROJECT	

LONG SECTION NUMBER:
 MULTIPLE COUNTIES:



MODEL: E:\CL14_Plan 17 (9)w.dwg
 FILE NAME: P:\Bids\pcc\14\17\17 (9)w.dwg
 PROJECT: I:\DOT\Documents\DOT Office\District 6\ORD Project\B72223\CADD\Drawings\B72223-Plan.dwg

- PAVEMENT MARKING LEGEND**
- ① PR PAINT PAVEMENT MARKING (WHITE) - LINE 5"
 - ② PR PAINT PAVEMENT MARKING (SKIP-DASH YELLOW) - LINE 5"
 - ③ PR PAINT PAVEMENT MARKING (DOUBLE YELLOW) - LINE 5"
 - ④ PR PAINT PAVEMENT MARKING (YELLOW) - LINE 5"

USER NAME = Christopher.Siefert	DESIGNED -	REVISED -
DRAWN -	REVISED -	
PLOT SCALE = 0.16666633' / in.	CHECKED -	REVISED -
PLOT DATE = 10/18/2023	DATE -	REVISED -

**STATE OF ILLINOIS
DEPARTMENT OF TRANSPORTATION**

PLAN SHEET IL 124			
SCALE: 1"=50'	SHEET OF SHEETS	STA.	TO STA.

F.A.S. RTE. 618	SECTION (B,N,Q-15D) Q	COUNTY SANGAMON	TOTAL SHEETS 21	SHEET NO. 20
CONTRACT NO. 72293			ILLINOIS FED. AID PROJECT	

LONG SECTION NUMBER:
MULTIPLE COUNTIES:

OMIT ; SKIP WHEN NO PASSING ZONE APPLIES TO BOTH DIRECTIONS

6 1/2" C-C 13" C-C

NO PASSING ZONE LINES
SOLID 5" YELLOW
PAINT OR URETHANE (SEE CONTRACT)

PAINT
EDGE LINES SOLID 5" WHITE
C & G SECTIONS - EDGE LINES NOT USED
≤ 45 MPH

10' 30'

; SKIP-DASH
5" YELLOW
PAINT OR URETHANE (SEE CONTRACT)

IF VERTICAL PROFILE OF ROADWAY IS CHANGED DURING CONSTRUCTION, "NO PASSING ZONES" ARE TO BE FIELD VERIFIED BY THE BUREAU OF OPERATIONS. THE RESIDENT ENGINEER SHALL NOTIFY THE BUREAU OF OPERATIONS 14 DAYS PRIOR TO PERMANENT PAVEMENT MARKINGS.

MODEL: 72293.Dwg (Sheet) (Sheet)
FILE NAME: P:\Bids\2023\72293\Drawings\DOT Office\District 6\ORD Project\B72293\CADD\B72293-C-Details.dgn

USER NAME = Christopher.Stiefert	DESIGNED -	REVISED -
	DRAWN -	REVISED -
PLOT SCALE = 0.16666633' / in.	CHECKED -	REVISED -
PLOT DATE = 10/18/2023	DATE -	REVISED -

STATE OF ILLINOIS
DEPARTMENT OF TRANSPORTATION

PAVEMENT MARKING DETAIL

SCALE: SHEET OF SHEETS STA. TO STA.

F.A.S. RTE.	SECTION	COUNTY	TOTAL SHEETS	SHEET NO.
618	(B,N,O-15D) Q	SANGAMON	21	21
CONTRACT NO. 72293				

LONG SECTION NUMBER:
MULTIPLE COUNTIES:

ILLINOIS FED. AID PROJECT