

STATE OF ILLINOIS  
DEPARTMENT OF TRANSPORTATION

F.A.P. RTE.	SECTION	COUNTY	TOTAL SHEETS	SHEET NO.
669	(10)RS-8	PEORIA	48	1
		ILLINOIS	CONTRACT NO. 68H68	

INDEX OF SHEETS

- 1 COVER SHEET
- 2 COMMITMENTS/GENERAL NOTES & JOB SPECIFIC NOTES
- 3-4 SUMMARY OF QUANTITIES
- 5-8 SCHEDULE OF QUANTITIES
- 9-13 TYPICAL SECTIONS
- 14-43 PLAN SHEETS
- 44-48 CADD STANDARDS

HIGHWAY STANDARDS

- 701427-05
- 701601-09
- 701901-09
- 780001-05

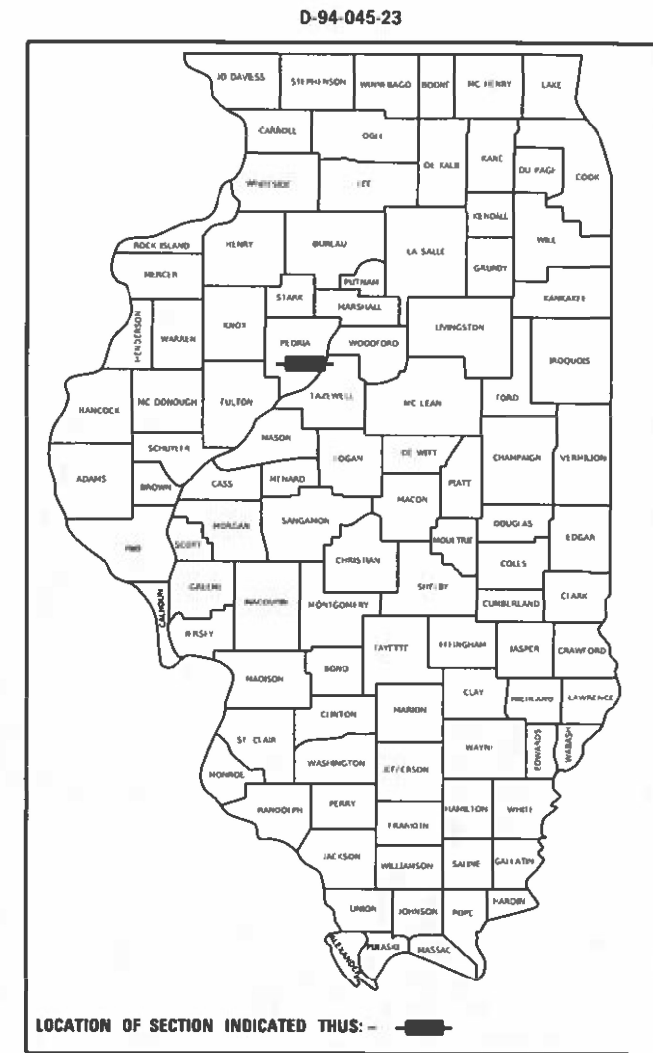
DISTRICT STANDARDS

- 406101
- 780001

# PROPOSED HIGHWAY PLANS

FAP ROUTE 669 (IL 116) (IL 8)  
SECTION (10)RS-8  
RESURFACING AND CHIP SEAL  
PEORIA COUNTY

C-94-066-23



PROJECT DESCRIPTION:  
RESURFACING ON LINCOLN AVE & HOWETT ST FROM GRISWOLD ST TO ADAMS ST IN PEORIA  
(SMART OVERLAY: DRIVING LANES ONLY & CHIP SEAL ON PARKING AND BIKE LANES)

STATE OF ILLINOIS  
DEPARTMENT OF TRANSPORTATION

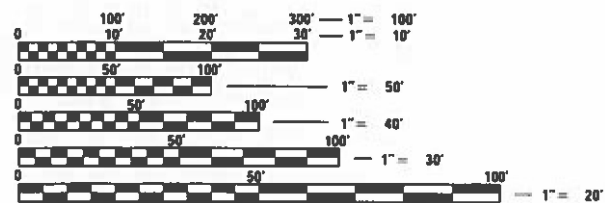
SUBMITTED Oct 19 2023  
Kensel A. Barnett P.E.  
REGIONAL ENGINEER

December 8, 2023  
[Signature]  
ENGINEER OF DESIGN AND ENVIRONMENT

December 8, 2023  
[Signature]  
DIRECTOR OF HIGHWAYS PROJECT IMPLEMENTATION

PRINTED BY THE AUTHORITY  
OF THE STATE OF ILLINOIS

LINCOLN AVE	HOWETT ST
ADT: 3,420 (2018)	ADT: 2,920 (2018)
HCV: 160 (4.68%)	HCV: 115 (3.94%)
SU: 50 (1.46%)	SU: 30 (1.03%)
MU: 110 (3.22%)	MU: 85 (2.91%)

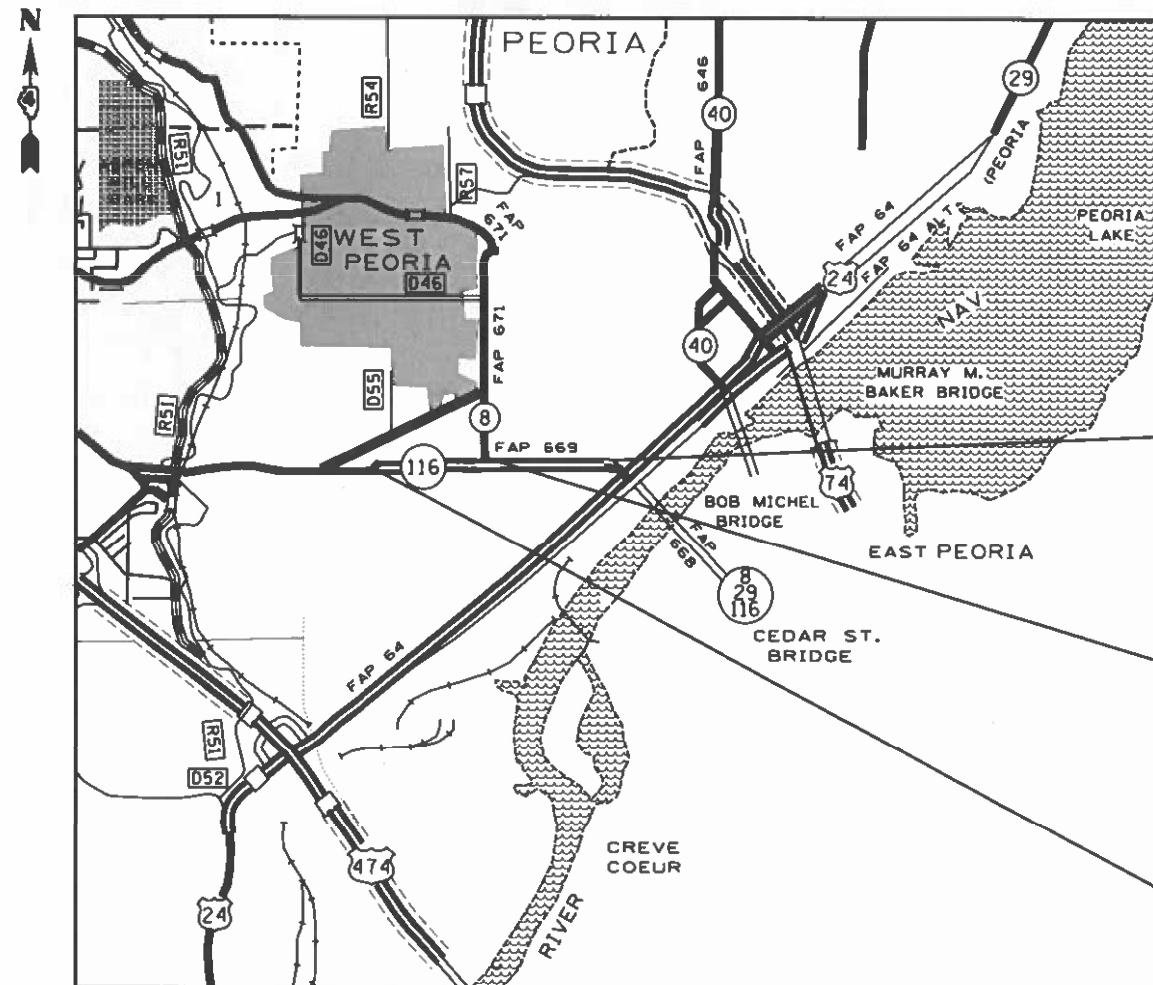


FULL SIZE PLANS HAVE BEEN PREPARED USING STANDARD ENGINEERING SCALES. REDUCED SIZED PLANS WILL NOT CONFORM TO STANDARD SCALES. IN MAKING MEASUREMENTS ON REDUCED PLANS, THE ABOVE SCALES MAY BE USED.

J.U.L.I.E.  
JOINT UTILITY LOCATION INFORMATION FOR EXCAVATORS  
1-800-892-0123  
OR 811

PROJECT ENGINEER: NICOLE FAYANT (309) 671-3454  
PROJECT MANAGER: MICHAEL JACOBS (309) 671-3460

CONTRACT NO. 68H68  
CATALOG NO. 036419-00D



GROSS LENGTH = 14,290 FT. = 2.71 MILES  
NET LENGTH = 13,924 FT. = 2.64 MILES

PROJECT ENDS  
STA. 4 + 20 (HOWETT)  
STA. 102 + 20 (LINCOLN)

OMISSIONS  
STA. 46 + 80 - STA. 47 + 97 (HOWETT)  
STA. 54 + 75 - STA. 56 + 54 (LINCOLN)  
STA. 94 + 92 - STA. 95 + 62 (LINCOLN)

PROJECT BEGINS  
STA. 73 + 90 (HOWETT)  
STA. 29 + 00 (LINCOLN)

**COMMITMENTS**

Commitments are not to be altered without the written approval of all parties to which the commitment was made.

**NO COMMITMENTS HAVE BEEN MADE ON THIS PROJECT.**

**CONSECUTIVE SIDE STREET (ROAD) CLOSURE – PROHIBITED**

1. No two consecutive side streets (roads) may be closed at the same time during construction. The Contractor must alternate steets (roads).

2. Adjacent side roads will not be closed simultaneously/BLR Standard 21 shall be used for all local road closures without any entrances within the area. BLR standard 22 can be used where it is necessary to allow traffic access.

**ENVIRONMENTAL REVIEWS**

Prior to the use of any proposed borrow areas, use areas (temporary access roads, detours, run-arounds, etc.) and /or waste areas, the Contractor shall file the required environmental resource request surveys according to Section 107.22 of the Standard Specifications. These surveys are required in order for the Department to conduct cultural and biological resource surveys for the proposed site.

The required environmental resource documentation shall include the following:

- \* BDE Form 2289 (Cultural and Natural Resource Review of Borrow Areas)
- \* BDE Form 2290 (Waste/Use Area Review)
- \* A location map showing the size limits and location of the use area
- \* Color photographs depicting the use area
- \* Borrow Area Entry Agreement form–D4 PI0101

Prior to any waste materials being removed from the construction site the required environmental resource surveys shall be obtained and filed by the Contractor. Excess waste products removed from the construction site shall be disposed of as required in Section 202.03 of the Standard Specifications.

Any protruding metal bars shall be removed prior to the disposal of broken concrete at approved disposal sites.

Please note that a minimum of four weeks shall be allowed for the District to obtain the required waste site environmental clearances and six weeks for the required borrow site environmental clearances.

**BUTT JOINT CUTTING TIME RESTRICTION**

Butt joints shall not be milled more than three (3) days prior to placement of the HMA surface course.

**POLYMERIZED BITUMINOUS MATERIALS (TACK COAT) RATES**

Surface Type	Residual Rate
Milled (HMA or PCC)	0.08 lb /sq ft
Existing Pavement	0.08 lb /sq ft
Fog Coat (between lifts)	0.08 lb /sq ft

**HOT-MIX ASPHALT MIXTURE REQUIREMENTS**

Mixture Use(s):	Mainline	Mainline
Mixture Use(s):	Surface 1.5"	Partial Depth Patching 3"(one lift)
AC/PG:	PG 58-28	PG 58-28
Design Air Voids:	4.0% @ N=50	4.0% @ N=50
Mixture Composition: (Mixture Gradation):	IL 9.5	IL 19.0
Friction Aggregate:	Mix D	NA
Quality Management Program:	QCQA	QCQA
MTD (YES OR NO):	YES	YES

Notes:

- 1) Individual lift thickness of each mix type will be no less than 3 times nominal maximum aggregate size and no more than 6 times nominal maximum aggregate size, unless otherwise approved by the Engineer.
- 2) For design purposes, mixture weight for all mixes is determined to be 112.0 lb's.y/in., unless otherwise noted.

**PAVING SURFACE COURSE**

Continuous paving operations on the main roadway shall be maintained at all times during the construction of the hot-mix asphalt surface. No interruptions for side roads, entrances, turn lanes, etc. will be allowed.

**PROJECT SPECIFIC NOTES**

**PAVEMENT MARKING**

Two applications shall be applied. The first application shall be applied after the proposed treatment curing time as specified in the standard specifications. The second application shall be applied thirty (30) days after the first application is applied, or as directed by the engineer.

The aggregate materials for the A1 surface seal coat shall be (crushed) CA 20. (Crushed) CA 16 may be used if approved by the engineer.

**HMA SURFACE REMOVAL 1.5" AND PARTIAL DEPTH PATCHING 3"**

If Trolley steel rails are encountered, the contractor shall reduce the cut and adjust the slopes to avoid it.

STATE OF ILLINOIS  
DEPARTMENT OF TRANSPORTATION

COMMITMENTS, GENERAL NOTES AND JOB SPECIFIC NOTES

F.A.P. RTE.	SECTION	COUNTY	TOTAL SHEETS	SHEET NO.
669	(10)RS-8	PEORIA	48	2
CONTRACT NO. 68H68				
ILLINOIS FED. AID PROJECT				

SCALE: SHEET OF SHEETS STA. TO STA.

CODE NO.	ITEM	UNIT	TOTAL QUANTITY	CONSTR. CODE
				100% STATE
				ROADWAY
				0005 URBAN
40600295	POLYMERIZED BITUMINOUS MATERIALS (TACK COAT)	POUND	13999	13999
40600982	HOT-MIX ASPHALT SURFACE REMOVAL - BUTT JOINT	SQ YD	160	160
40600990	TEMPORARY RAMP	SQ YD	87	87
40604060	HOT-MIX ASPHALT SURFACE COURSE, 1L 9.5, MIX "D", N50	TON	1634	1634
44000155	HOT-MIX ASPHALT SURFACE REMOVAL, 1 1/2"	SQ YD	19283	19283
60255500	MANHOLES TO BE ADJUSTED	EACH	4	4
67100100	MOBILIZATION	L SUM	1	1
70102630	TRAFFIC CONTROL AND PROTECTION, STANDARD 701601	L SUM	1	1
70107025	CHANGEABLE MESSAGE SIGN	CAL DA	14	14
* 78009000	MODIFIED URETHANE PAVEMENT MARKING - LETTERS AND SYMBOLS	SO FT	1797	1797
* 78009004	MODIFIED URETHANE PAVEMENT MARKING - LINE 4"	FOOT	19126	19126
* 78009006	MODIFIED URETHANE PAVEMENT MARKING - LINE 6"	FOOT	51216	51216
* 78009008	MODIFIED URETHANE PAVEMENT MARKING - LINE 8"	FOOT	7232	7232
* 78009012	MODIFIED URETHANE PAVEMENT MARKING - LINE 12"	FOOT	3560	3560

\* = SPECIALTY ITEM

MODEL: Default  
FILE NAME: p:\iug\paw.bentley.com\FWDDT\Documents\101007\_07\res\Distric al\Projects\04\_68H6B\CAD\Drawings\84H6B\_1003

USER NAME = Mike Jacobs	DESIGNED -	REVISED -	<b>STATE OF ILLINOIS</b> <b>DEPARTMENT OF TRANSPORTATION</b>				<b>SCHEDULE OF QUANTITIES</b>				F.A.P. RTE 669	SECTION (10)RS 8	COUNTY PEORIA	TOTAL SHEETS 48	SHEET NO. 3							
PLOT SCALE = 100 0000' / in	DRAWN -	REVISED -									SCALE				SHEET OF SHEETS STA TO STA.				ILLINOIS FED. AID PROJECT			
PLOT DATE = 10/3/2023	CHECKED -	REVISED -																	CONTRACT NO. 68H6B			
	DATE -	REVISED -																				

CODE NO.	ITEM	UNIT	TOTAL QUANTITY	CONSTR. CODE
				100% STATE
				ROADWAY
				0005 URBAN
* 78009024	MODIFIED URETHANE PAVEMENT MARKING - LINE 24"	FOOT	140	140
78300202	PAVEMENT MARKING REMOVAL - WATER BLASTING	SQ FT	16867	16867
X1500004	BITUMINOUS SURFACE TREATMENT, A1	SQ YD	33197	33197
X4060107	BITUMINOUS MATERIALS ( FOG SEAL )	POUND	14939	14939
X4421000	PARTIAL DEPTH PATCHING	TON	309	309
X4421002	PARTIAL DEPTH PATCHING ( SPECIAL )	SQ YD	1820	1820
XZ013798	CONSTRUCTION STATION LAYOUT	L SUM	1	1
Z0034105	MATERIAL TRANSFER DEVICE	TON	1634	1634
Ø Z0076604	TRAINEES - TRAINING PROGRAM GRADUATE	HOUR	1,000	1,000

Ø 0042 \* = SPECIALTY ITEM

MODEL: Default  
 FILE NAME: p:\ultra-cad\benefy.com\PIV\DOT\Documents\DOT Office\Dir\rdt\_4\Project\ID\_68H68\CAD\Drawn\68H68 500

USER NAME = Brian,Bouris	DESIGNED -	REVISED -
PLOT SCALE = 100,0000 ' / in.	DRAWN -	REVISED -
PLOT DATE = 10/31/2023	CHECKED -	REVISED -
	DATE -	REVISED -

**STATE OF ILLINOIS  
DEPARTMENT OF TRANSPORTATION**

SCHEDULE OF QUANTITIES			
SCALE:	SHEET	OF	SHEETS

F.A.P. RTE.	SECTION	COUNTY	TOTAL SHEETS	SHEET NO.
669	(10)RS-8	PEORIA	48	4
CONTRACT NO. 68H68				
ILLINOIS FED. AID PROJECT				

LOCATION			LENGTH	WIDTH	AREA	HMA SURF. REMOVAL, BUTT JOINT	HMA SURF. REMOVAL 1.5 INCH	POLYMERIZED BITUMINOUS MATERIALS (TACK COAT)	HMA SURFACE COURSE, IL-9.5, MIX "D", N50	MATERIAL TRANSFER DEVICE
STATION	TO	STATION	FT.	FT.	SQ. YD.	10 FT SQ. YD.	SQ. YD.	0.08 LB/SQ FT POUND	1.5 INCH TON	TON
<b>HOWETT ST.</b>										
4+20	-	4+30	10	12	13.3	13.3		9.6	1.12	1.12
4+30	-	46+70	4240	12	5653.3		5653.3	4070.4	474.88	474.88
46+70	-	46+80	10	12	13.3	13.3		9.6	1.12	1.12
<b>Western Ave. OMISSION STA. 46+80 - STA. 47+97</b>										
47+97	-	48+07	10	12	13.3	13.3		9.6	1.12	1.12
48+07	-	73+80	2573	12	3430.7		3430.7	2470.08	288.18	288.18
73+80	-	73+90	10	12	13.3	13.3		9.6	1.12	1.12
<b>HOWETT ST. Subtotal</b>						53.20	9084.00	6578.88	767.54	767.54
<b>LINCOLN ST.</b>										
29+00	-	29+10	10	12	13.3	13.3		9.6	1.12	1.12
29+10	-	54+65	2555	12	3406.7		3406.7	2452.8	286.16	286.16
54+65	-	54+75	10	12	13.3	13.3		9.6	1.12	1.12
<b>Western Ave. OMISSION STA. 54+75 - 56+54</b>										
56+54	-	56+64	10	12	13.3	13.3		9.6	1.12	1.12
56+64	-	94+82	3818	12	5090.7		5090.7	3665.28	427.62	427.62
94+82	-	94+92	10	12	13.3	13.3		9.6	1.12	1.12
<b>Jefferson Ave. OMISSION STA. 94+92 - 95+62</b>										
95+62	-	95+72	10	24	26.7	26.7		19.2	2.24	2.24
95+72	-	102+10	638	24	1701.3		1701.3	1224.96	142.91	142.91
102+10	-	102+20	10	24	26.7	26.7		19.2	2.24	2.24
<b>LINCOLN ST. Subtotal</b>						106.60	10198.67	7419.84	865.65	865.65
<b>TOTAL</b>						160	19283	13999	1634	1634

LOCATION	LENGTH	WIDTH	AREA		TEMPORARY RAMPS
STATION	FT.	FT.	SQ FT	SQ. YD.	SQ. YD.
<b>HOWETT ST.</b>					
4+20	5	12	60	6.67	6.7
46+80	5	12	60	6.67	6.7
47+97	5	12	60	6.67	6.7
73+80	5	12	60	6.67	6.7
<b>Howett Subtotal</b>					26.7
<b>LINCOLN ST.</b>					
29+00	5	12	60	6.67	6.7
54+75	5	12	60	6.67	6.7
56+54	5	12	60	6.67	6.7
56+54	5	12	60	6.67	6.7
94+92	5	12	60	6.67	6.7
95+62	5	24	120	13.33	13.3
102+20	5	24	120	13.33	13.3
<b>Lincoln Subtotal</b>					60.0
<b>TOTAL</b>					87

LOCATION	LENGTH	WIDTH	AREA		BITUMINOUS SURFACE TREATMENT A1	BITUMINOUS MATERIAL (FOGSEAL) 0.05 LBS/SQFT
			SQ FT	SQ YD		
<b>HOWETT ST.</b>						
STA. 4+20 - 46+80	4260	20.5	87330	9703.33	9703.33	4366.5
STA. 47+97 - 65+00	1703	20.5	34911.5	3879.06	3879.06	1745.575
STA. 65+00 - 73+90	890	28	24920	2768.89	2768.89	1246
<b>SUBTOTAL</b>			147161.50	16351.28	16351.28	7358.08
<b>LINCOLN AVE.</b>						
STA. 29+00 - 38+50	950	32	30400	3377.78	3377.78	1520
STA. 38+50 - 54+75	1625	20.5	33312.5	3701.39	3701.39	1665.625
STA. 56+54 - 94+92	3838	20.5	78679	8742.11	8742.11	3933.95
STA. 95+62 - 102+20	658	14	9212	1023.56	1023.56	460.6
<b>SUBTOTAL</b>			151603.50	16844.83	16844.83	7580.18
<b>TOTAL</b>					33197	14939

MODEL: Default  
 FILE NAME: g:\ludac\paw\kentucky.com\paw\DOT\Documents\DOT\DOT\rest\DOT\al\Project\04\_68+66\CD\Draws\CD\Draws\68+66\_500

USER NAME = Mike Jacobs	DESIGNED -	REVISD -
PLOT SCALE = 100.0000' / in.	DRAWN -	REVISD -
PLOT DATE = 10/3/2023	CHECKED -	REVISD -
	DATE -	REVISD -

**STATE OF ILLINOIS  
DEPARTMENT OF TRANSPORTATION**

**SUMMARY OF QUANTITIES**

SCALE: SHEET OF SHEETS STA. TO STA.

F.A.P. RTE. 669	SECTION (10)RS-8	COUNTY PEORIA	TOTAL SHEETS 48	SHEET NO. 5
CONTRACT NO. 68H68				
ILLINOIS FED. AID PROJECT				

MODIFIED URETHANE PAVEMENT MARKING						
LOCATION	Line 4"	Line 6"	Line 8"	Line 12"	Line 24"	Letters & Symbols
	FOOT	FOOT	FOOT	FOOT	FOOT	SQ FT
<b>HOWETT ST.</b>						
STA. 4+20 - 46+80	2184	7666	1673	628	0	327.1
STA. 47+97 - 65+00	1192	3224	275	196	0	100.8
STA. 65+00 - 73+90	1682	1748	130	102	0	56
<b>SUBTOTAL</b>	5058	12638	2078	926	0	483.9
<b>LINCOLN AVE.</b>						
STA. 29+00 - 38+50	1697	1744	150	103	0	44.8
STA. 38+50 - 54+75	1181	3178	385	270	0	89.6
STA. 56+54 - 94+92	1627	6970	955	453	32	235.2
STA. 95+62 - 102+20	0	1078	48	28	38	44.8
<b>SUBTOTAL</b>	4505	12970	1538	854	70	414.4
<b>TOTAL</b>	9563	25608	3616	1780	70	898.3
<b>2 APPLICATIONS TOTAL</b>	19126	51216	7232	3560	140	1797

Bike Symbols			
Lincoln Ave.			No.
Griswold	TO	westmoreland ave	5
Westmoreland	TO	Madison Park Terr.	5
Madison Park Terr.	TO	Western AVE	4
Western AVE	TO	Blaine St.	3
Blaine St.	TO	Warren St.	3
Warren St.	TO	Shelley	2
Shelley St.	TO	Louisa St.	3
Louisa St.	TO	Webster St.	3
Webster St.	TO	Charlton St.	2
Charlton St.	TO	New St.	2
New St.	TO	Jefferson St.	2
Jefferson St.	TO	Linden St.	1
Linden St.	TO	Meyer St.	1
Meyer St.	TO	Adams St.	2
Lincoln Subtotal:			38
Howett St.			No.
Jefferson St.	TO	New	2
New St.	TO	Charlton St.	4
Charlton St.	TO	Webster St.	2
Webster St.	TO	Louisa St.	3
Louisa St.	TO	Shelley St.	3
Shelley St.	TO	Warren St.	2
Warren St.	TO	Blaine St.	3
Blaine St.	TO	Western AVE	4
Western AVE	TO	Madison Park Terr.	4
Madison Park Terr.	TO	Westmoreland Ave	5
Westmoreland Ave	TO	Griswold St.	5
Howett Subtotal:			37

PAVEMENT MARKING REMOVAL - WATER BLASTING *	
LOCATION	SQ FT
<b>JOBSITE</b>	<b>16867</b>
<b>TOTAL</b>	<b>16867</b>

\*Quantity is estimated. Final quantity will be determined in the field

MODEL: Default  
 FILE NAME: g:\projects\pva\egentley.com\pva\DOT\Documents\DOT - Cr\get\101111.ctb  
 PROJECT: 4104 - 68th St CAD Data\CAD\Sheet\68-68-500

USER NAME = Mike Jacobs
PLOT SCALE = 100 0000 / in
PLOT DATE = 10/3/2023

DESIGNED -
DRAWN -
CHECKED -
DATE -

REVISED -
REVISED -
REVISED -
REVISED -

**STATE OF ILLINOIS  
DEPARTMENT OF TRANSPORTATION**

**SUMMARY OF QUANTITIES**

SCALE: SHEET OF SHEETS STA TO STA

F.A.P. RTE	SECTION	COUNTY	TOTAL SHEETS	SHEET NO.
669	(10)RS-8	PFORIA	49	6
CONTRACT NO. 68H68				

ILLINOIS FED. AID PROJECT

PARTIAL DEPTH PATCHING 3"									
LOCATION	Length	Width	Driving Lane	Parking Lane 1	Parking Lane 2	Bike Lane	Number of pathces	PARTIAL DEPTH PATCHING SPECIAL	PARTIAL DEPTH PATCHING
	FOOT	FOOT						SQ YD	TON
<b>Howett St.</b>									
Jefferson - Charlton	4	12	12				12	64	11
	4	10		12		12	24	107	18
Charlton - Westermoreland	20	6	1				1	14	3
	60	6	1				1	40	7
	120	6	2				2	160	27
	10	6	1				1	7	1
Westermoreland - Griswold	6	12	4				4	32	6
	6	11		4	4	4	12	88	15
<b>Howett St. subtotal</b>							57	511	87
<b>Lincoln Ave.</b>									
Griswold - Westermoreland	6	12	4				4	32	6
	6	11		4	4	4	12	88	15
Westermoreland - Adams	40	12	1				1	54	9
	120	12	2				2	320	54
	80	12	1				1	107	18
	80	6	1				1	54	9
	160	12	1				1	214	36
	30	6	1				1	20	4
<b>Lincoln Ave. Subtotal</b>							23	889	151
<b>SUBTOTAL</b>							80	1400	238
<b>Winter Break-UP ( ADD 30%)</b>								420	71
<b>Total</b>								1820	309

MODEL: Default  
 FILE NAME: \\wilsco-pw-bentley.com\PWID07\Documents\IUDOT\_07\_cpt\Dist.ctb\110418\68H6B\CAD\Drawings\68-500

USER NAME = Mike Jacobs	DESIGNED -	REVISED -
PLOT SCALE = 100 0000' / in	DRAWN -	REVISED -
PLOT DATE = 10/3/2023	CHECKED -	REVISED -
	DATE -	REVISED -

**STATE OF ILLINOIS**  
**DEPARTMENT OF TRANSPORTATION**

**SUMMARY OF QUANTITIES**

SCALE: SHEET OF SHEETS STA. TO STA.

F.A.P. RTE.	SECTION	COUNTY	TOTAL SHEETS	SHEET NO.
669	(10)RS-8	PEORIA	48	7
CONTRACT NO. 68H6B			ILLINOIS FED. AID PROJECT	

MOBILIZATION	
LOCATION	LUMP SUM
JOBSITE	1
<b>TOTAL</b>	<b>1</b>

CHANGEABLE MESSAGE SIGN	
JOBSITE	CAL DAY
2 SIGNS 7 DAYS EACH	14
<b>TOTAL</b>	<b>14</b>

MANHOLE TO BE ADJUSTED	
LOCATION	EACH
Howett St.	4
<b>TOTAL</b>	<b>4</b>

CONSTRUCTION STATION LAYOUT	
LOCATION	LUMP SUM
JOBSITE	1
<b>TOTAL</b>	<b>1</b>

TRAFFIC CONTROL AND PROTECTION STANDARD 701601	
LOCATION	LUMP SUM
JOBSITE	1
<b>TOTAL</b>	<b>1</b>

MODEL: Default  
 FILE NAME: dw:\projects\peoria\68H68\documents\1007 - Offices\District 4\Projects\04\_68H68\CAD\22a\CAD\22a\18h68\_500

USER NAME = Mike Jacobs	DESIGNED -	REVISED -
PLT SCALE = 100 0000' / in	DRAWN -	REVISED -
PLT DATE = 10/3/2023	CHECKED -	REVISED -
	DATE -	REVISED -

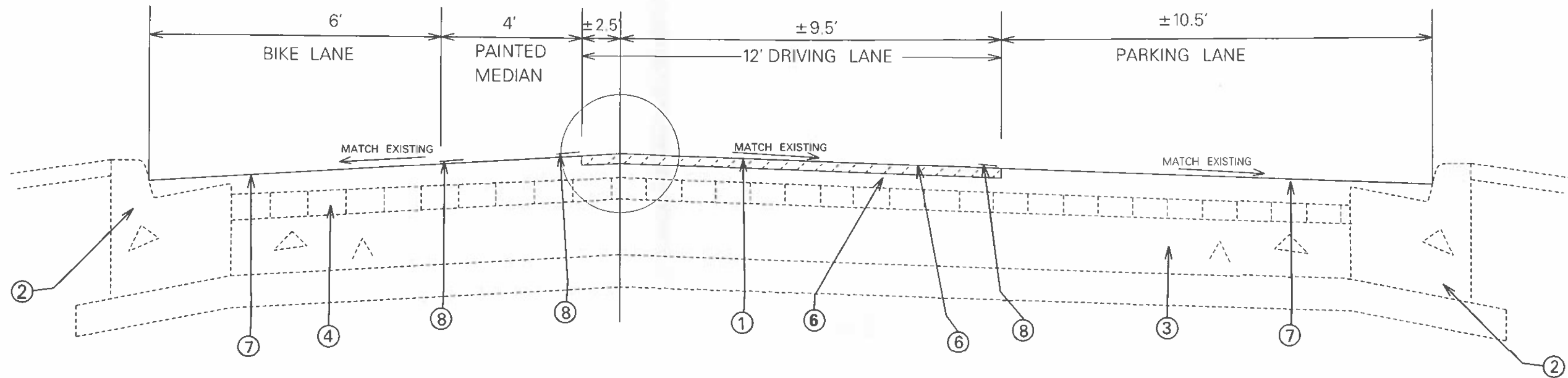
**STATE OF ILLINOIS**  
**DEPARTMENT OF TRANSPORTATION**

SUMMARY OF QUANTITIES				
SCALE:	SHEET	OF	SHEETS	STA. TO STA.

FAP RATE 669	SECTION (10)RS-B	COUNTY PEORIA	TOTAL SHEETS 48	SHEET NO. 8
CONTRACT NO. 68H68				
ILLINOIS / FED. AID PROJECT				



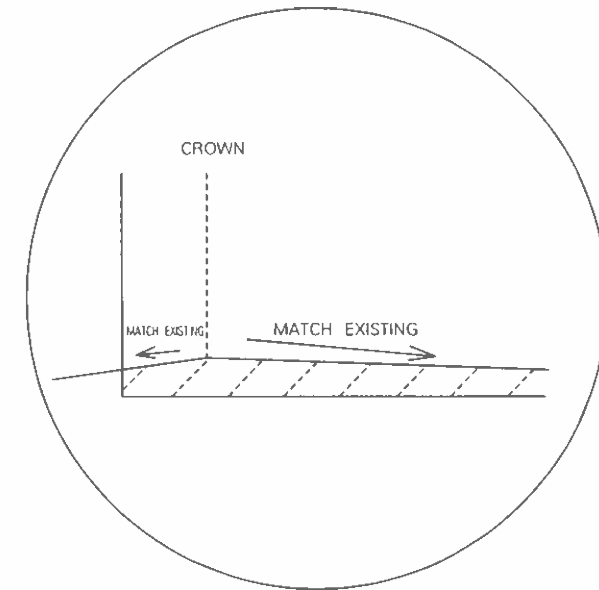
# HOWETT



**STA. 4+20 – STA. 46+81**  
**STA. 47+97 – STA. 65+00**

## LEGEND

1. EXISTING HMA OVERLAY AND MICROSURFACING
2. EXISTING CURB & GUTTER
3. EXISTING PCC PAVEMENT
4. EXISTING 4" BRICK SURFACE
5. PROPOSED HMA SURFACE REMOVAL 1 1/2"
6. PROPOSED HMA SURFACE COURSE 1 1/2"
7. PROPOSED BITUMINOUS SURFACE TREATMENT A1
8. PROPOSED PAVEMENT MARKING



MODEL: D:\csh\p1\1001\1001.dwg  
 FILE NAME: 68H68\68H68.dwg  
 PROJECT: 68H68\68H68.dwg  
 DATE: 9/29/2023

USER NAME - Antonio Lewis	DESIGNED -	REVISED -
PLOT SCALE = 31.2935 / in	DRAWN -	REVISED -
PLOT DATE = 9/29/2023	CHECKED -	REVISED -
	DATE -	REVISED -

**STATE OF ILLINOIS**  
**DEPARTMENT OF TRANSPORTATION**

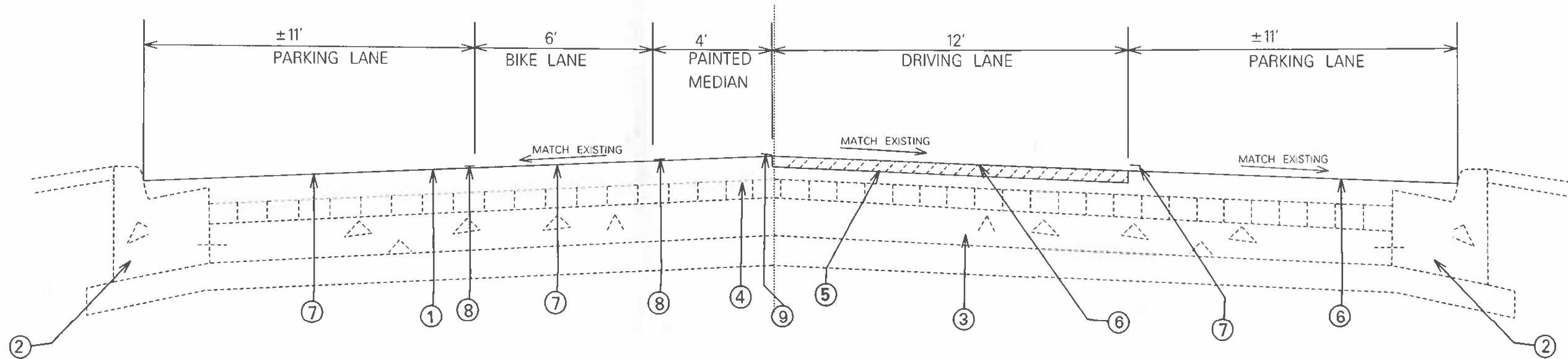
**PROPOSED TYPICAL SECTIONS**

F.A.P. RATE 669	SECTION (10)RS 8	COUNTY PEORIA	TOTAL SHEETS 48	SHEET NO. 9
CONTRACT NO. 68H68				
ILLINOIS FED. AID PROJECT				

SCALE: SHEET OF SHEETS STA. TO STA.



# LINCOLN



STA. 29 + 00 – STA. 38 + 50

## LEGEND

1. EXISTING HMA OVERLAY AND MICROSURFACING
2. EXISTING CURB & GUTTER
3. EXISTING PCC PAVEMENT
4. EXISTING 4" BRICK SURFACE
5. PROPOSED HMA SURFACE REMOVAL 1 1/2"
6. PROPOSED HMA SURFACE COURSE 1 1/2"
7. PROPOSED BITUMINOUS SURFACE TREATMENT A1
8. PROPOSED PAVEMENT MARKING

MODEL: D:\proj\lincoln\pavement.dwg  
 USER: antonio.lewis  
 PLOT DATE: 9/29/2023

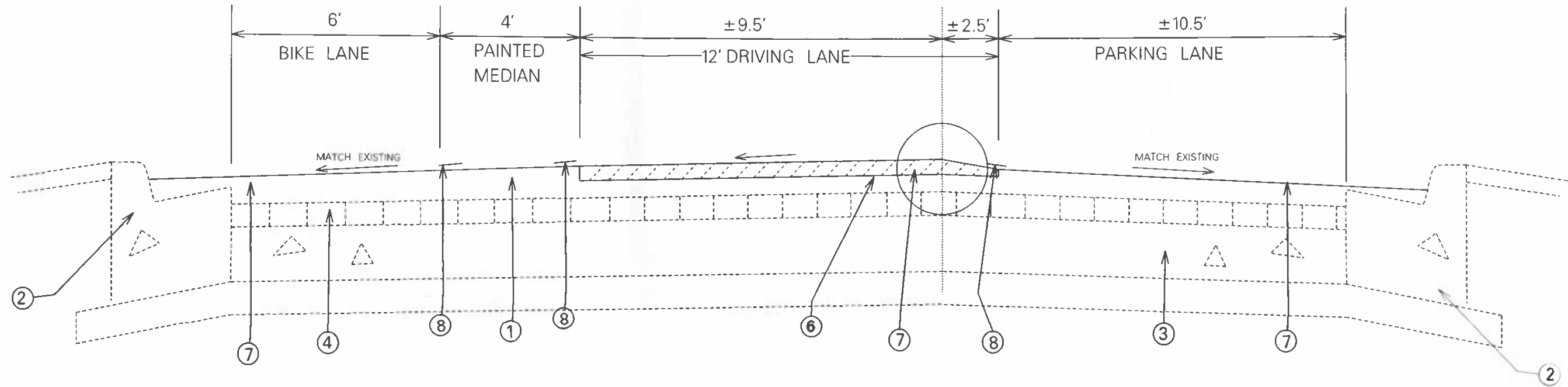
USER NAME = antonio.lewis	DESIGNED =	REVISED =
PLOT SCALE = 31.25/36 = 1/12	DRAWN =	REVISED =
PLOT DATE = 9/29/2023	CHECKED =	REVISED =
	DATE =	REVISED =

STATE OF ILLINOIS  
DEPARTMENT OF TRANSPORTATION

PROPOSED TYPICAL SECTIONS			
SCALE	SHEET	OF SHEETS	STA. TO STA.

F.A.P. RTE.	SECTION	COUNTY	TOTAL SHEETS	SHEET NO.
669	1101R5-8	PEORIA	48	11
CONTRACT NO. 68H68				
ILLINOIS FED. AID PROJECT				

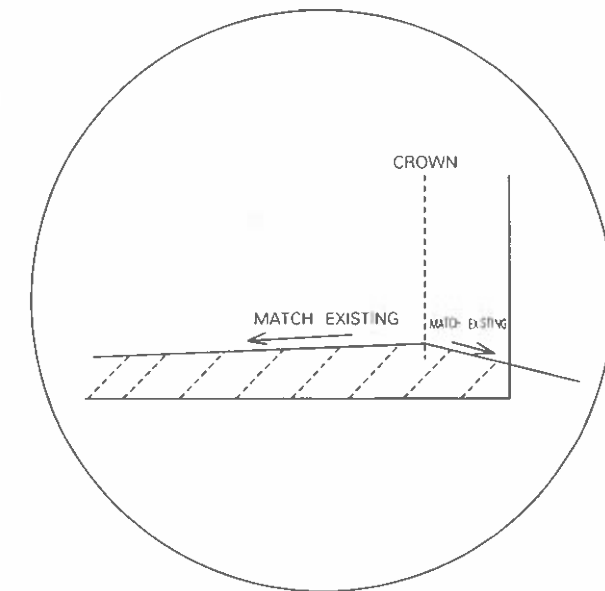
# LINCOLN



**STA. 38+50 – STA. 54+75**  
**STA. 56+54 – STA. 94+92**

## LEGEND

1. EXISTING HMA OVERLAY AND MICROSURFACING
2. EXISTING CURB & GUTTER
3. EXISTING PCC PAVEMENT
4. EXISTING 4" BRICK SURFACE
5. PROPOSED HMA SURFACE REMOVAL 1 1/2"
6. PROPOSED HMA SURFACE COURSE 1 1/2"
7. PROPOSED BITUMINOUS SURFACE TREATMENT A1
8. PROPOSED PAVEMENT MARKING



MODEL: Default  
 FILE NAME: s:\illinois\p\berkeley.com\p\68H68\Documents\68H68\01 - Office\District - 68H68\CAD\Drawings\68H68\_S11\_Typical.dwg

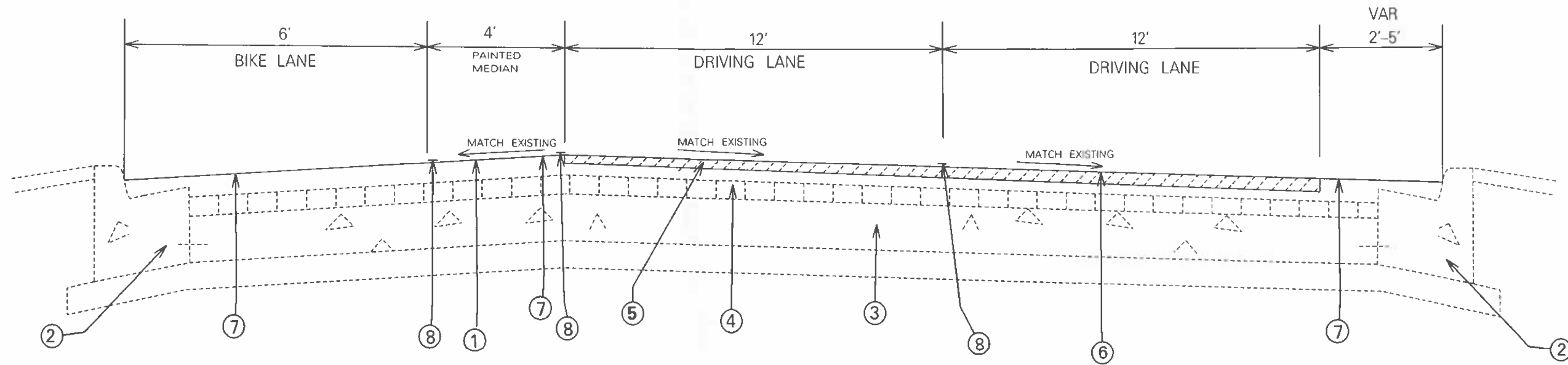
USER NAME - Antonio Lewis	DESIGNED -	REVISED -
PLOT SCALE - 1/8" = 1'-0"	DRAWN -	REVISED -
PLOT DATE - 9/29/2023	CHECKED -	REVISED -
	DATE -	REVISED -

**STATE OF ILLINOIS**  
**DEPARTMENT OF TRANSPORTATION**

PROPOSED TYPICAL SECTIONS			
SCALE:	SHEET	OF SHEETS	STA. TO STA.

F.A.P. RTE. 669	SECTION (10)RS-8	COUNTY PEORIA	TOTAL SHEETS 48	SHEET NO. 12
ILLINOIS FED. AID PROJECT				CONTRACT NO. 68H68

# LINCOLN



STA. 95 + 62 - STA. 102 + 20

## LEGEND

1. EXISTING HMA OVERLAY AND MICROSURFACING
2. EXISTING CURB & GUTTER
3. EXISTING PCC PAVEMENT
4. EXISTING 4" BRICK SURFACE
5. PROPOSED HMA SURFACE REMOVAL 1 1/2"
6. PROPOSED HMA SURFACE COURSE 1 1/2"
7. PROPOSED BITUMINOUS SURFACE TREATMENT A1
8. PROPOSED PAVEMENT MARKING

MODEL: Default  
 FILE: 68H68.dwg  
 PLOT DATE: 9/29/2023  
 USER: antonio.lewis@state.il.gov  
 PROJECT: 68H68  
 SHEET: 13 OF 48

USER NAME = Antonio Lewis	DESIGNED -	REVISED -
PLOT SCALE = 31.2936' / in	DRAWN -	REVISED -
PLOT DATE = 9/29/2023	CHECKED -	REVISED -
	DATE -	REVISED -

STATE OF ILLINOIS  
DEPARTMENT OF TRANSPORTATION

PROPOSED TYPICAL SECTIONS

SCALE: SHEET OF SHEETS STA TO STA

F.A.P. RTE	SECTION	COUNTY	TOTAL SHEETS	SHEET NO
669	110RS-8	PEORIA	48	13
CONTRACT NO. 68H68			ILLINOIS FED. AID PROJECT	

MODEL: Default  
 FILE NAME: \\sldocaw.bentley.com\PROJECTS\DOT\_01\ken\District\_#10\ken\District\_#10\ken\CA\00Data\CA\00sheet1\04\axiss.ctb.bug.dgn



**PROPOSED PAVEMENT MARKING LEGEND**

1. MOD. URETHANE 4"
2. MOD. URETHANE 6"
3. MOD. URETHANE 8"
4. MOD URETHANE 12"
5. MOD URETHANE 24"
6. MOD. URETHANE LETTERS & SYMBOLS

USER NAME	= Antonio Lewis	DESIGNED	-	REVISED	-
PLOT SCALE	= 31.7461' / in	DRAWN	-	REVISED	-
PLOT DATE	= 9/29/2023	CHECKED	-	REVISED	-
		DATE	-	REVISED	-

**STATE OF ILLINOIS  
 DEPARTMENT OF TRANSPORTATION**

**HOWETT PLAN SHEETS**

SCALE: SHEET OF SHEETS STA. TO STA.

F.A.P. RTE	SECTION	COUNTY	TOTAL SHEETS	SHEET NO.
669	(10)RS-8	PEORIA	48	14
CONTRACT NO. 68H68				
ILLINOIS FED. AID PROJECT				



**PROPOSED PAVEMENT MARKING LEGEND**

- 1. MOD. URETHANE 4"
- 2. MOD. URETHANE 6"
- 3. MOD. URETHANE 8"
- 4. MOD URETHANE 12"
- 5. MOD URETHANE 24"
- 6. MOD. URETHANE LETTERS & SYMBOLS

MODEL: Default  
 FILE NAME: \\sds-srv-bentley.com\p1007\Documents\DOT\_Offices\District 4\In\p1007\68H68\CAD\68H68\68H68.dwg

USER NAME = Antonio Lewis	DESIGNED -	REVISED -
PLOT SCALE = 31.7463 / in	DRAWN -	REVISED -
PLOT DATE = 9/29/2023	CHECKED -	REVISED -
	DATE -	REVISED -

**STATE OF ILLINOIS**  
**DEPARTMENT OF TRANSPORTATION**

**HOWETT PLAN SHEETS**  
 SCALE: SHEET OF SHEETS STA. TO STA.

F.A.P. RTE.	SECTION	COUNTY	TOTAL SHEETS	SHEET NO.
669	(10)RS-8	PEORIA	48	15
CONTRACT NO. 68H68				
ILLINOIS FED. AID PROJECT				

WESTMORELAND



**PROPOSED PAVEMENT MARKING LEGEND**  
 1. MOD. URETHANE 4"  
 2. MOD. URETHANE 6"  
 3. MOD. URETHANE 8"  
 4. MOD URETHANE 12"  
 5. MOD URETHANE 24"  
 6. MOD. URETHANE LETTERS & SYMBOLS

MODEL: Default  
 FILE NAME: \\ltd01\arc-bentley.com\pwwd\DOT\Documents\DOT\_Offices\District\_4\10\1111\104\_68H68\CADD\Aerial\Sheets\104\arc-rs-8\104-ar-rs-8.dwg

USER NAME = Antonio Lewis	DESIGNED -	REVISED -
	DRAWN -	REVISED -
PLOT SCALE = 31.7463" / in	CHECKED -	REVISED -
PLOT DATE = 9/29/2023	DATE -	REVISED -

**STATE OF ILLINOIS**  
**DEPARTMENT OF TRANSPORTATION**

**HOWETT PLAN SHEETS**

SCALE: SHEET OF SHEETS STA. TO STA.

F.A.P. ATE	SECTION	COUNTY	TOTAL SHEETS	SHEET NO.
669	(10)RS-8	PEORIA	48	16
CONTRACT NO. 68H68				
ILLINOIS FED. AID PROJECT				





**PROPOSED PAVEMENT MARKING LEGEND**

1. MOD. URETHANE 4"
2. MOD. URETHANE 6"
3. MOD. URETHANE 8"
4. MOD URETHANE 12"
5. MOD URETHANE 24"
6. MOD. URETHANE LETTERS & SYMBOLS

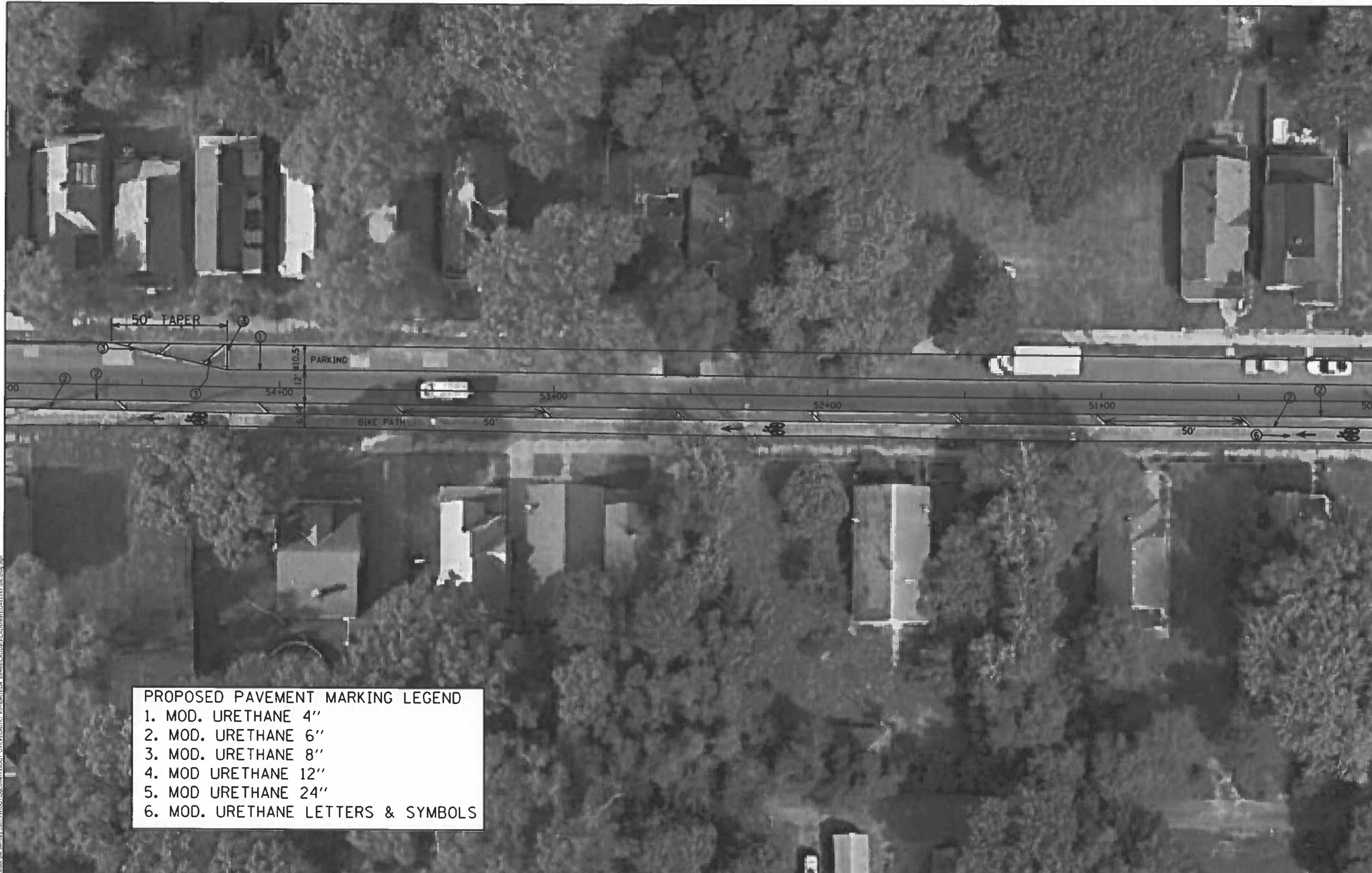
MODEL: Default  
 FILE NAME: \\gis02\arcgis\work\p1\DOT\Documents\DOT\_Offices\District\_#1\11111111\_68H68\CADD\11111111\11111111\11111111.dwg

USER NAME = Antonio Lewis	DESIGNED -	REVISED -
PLOT SCALE = 31.7463' / in	DRAWN -	REVISED -
PLOT DATE = 9/29/2023	CHECKED -	REVISED -
	DATE -	REVISED -

**STATE OF ILLINOIS**  
**DEPARTMENT OF TRANSPORTATION**

**HOWETT PLAN SHEETS**  
 SCALE: SHEET OF SHEETS STA. TO STA.

F.A.P. RTE. 669	SECTION (10)RS-8	COUNTY PEORIA	TOTAL SHEETS 48	SHEET NO. 17
CONTRACT NO. 68H68				
ILLINOIS FED. AID PROJECT				



**PROPOSED PAVEMENT MARKING LEGEND**

- 1. MOD. URETHANE 4"
- 2. MOD. URETHANE 6"
- 3. MOD. URETHANE 8"
- 4. MOD URETHANE 12"
- 5. MOD URETHANE 24"
- 6. MOD. URETHANE LETTERS & SYMBOLS

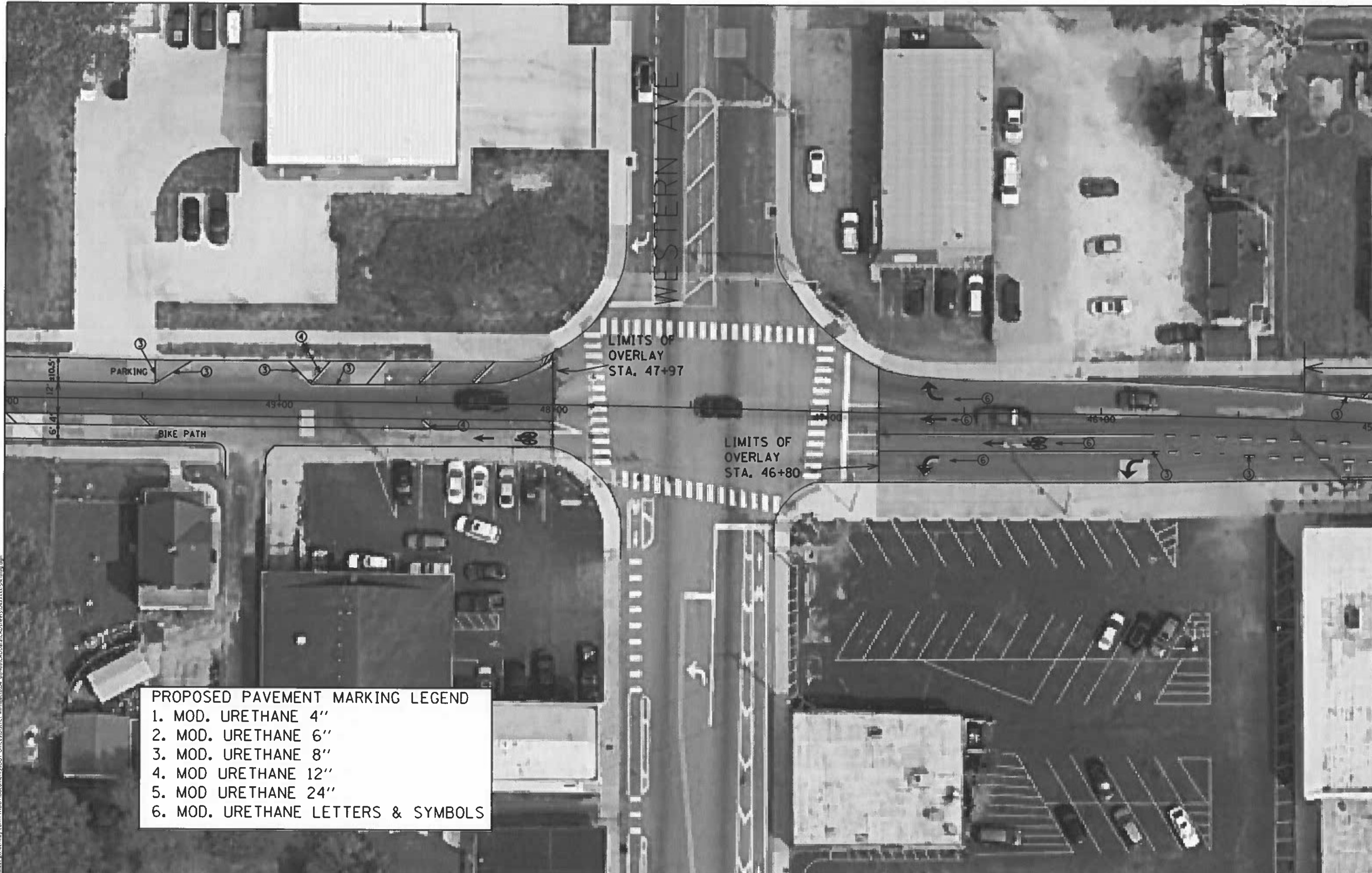
MODEL: Default  
 FILE NAME: \\u:\u\0000\jw\berkeley.com\p\0\DOT\Documents\DOT\_Offices\District\_4\Projects\1544\_68H68\CADD\Drawings\CD\Sheets\18\488888\888888.dwg

USER NAME = Antonio Lewis	DESIGNED -	REVISED -
PLOT SCALE = 31.7463" / in	DRAWN -	REVISED -
PLOT DATE = 9/29/2023	CHECKED -	REVISED -
	DATE -	REVISED -

**STATE OF ILLINOIS**  
**DEPARTMENT OF TRANSPORTATION**

**HOWETT PLAN SHEETS**  
 SCALE: SHEET OF SHEETS STA TO STA

F.A.P. RATE 669	SECTION (10)RS-B	COUNTY PEORIA	TOTAL SHEETS 48	SHEET NO. 18
CONTRACT NO. 68H68				
ILLINOIS FED AID PROJECT				



**PROPOSED PAVEMENT MARKING LEGEND**

- 1. MOD. URETHANE 4"
- 2. MOD. URETHANE 6"
- 3. MOD. URETHANE 8"
- 4. MOD URETHANE 12"
- 5. MOD URETHANE 24"
- 6. MOD. URETHANE LETTERS & SYMBOLS

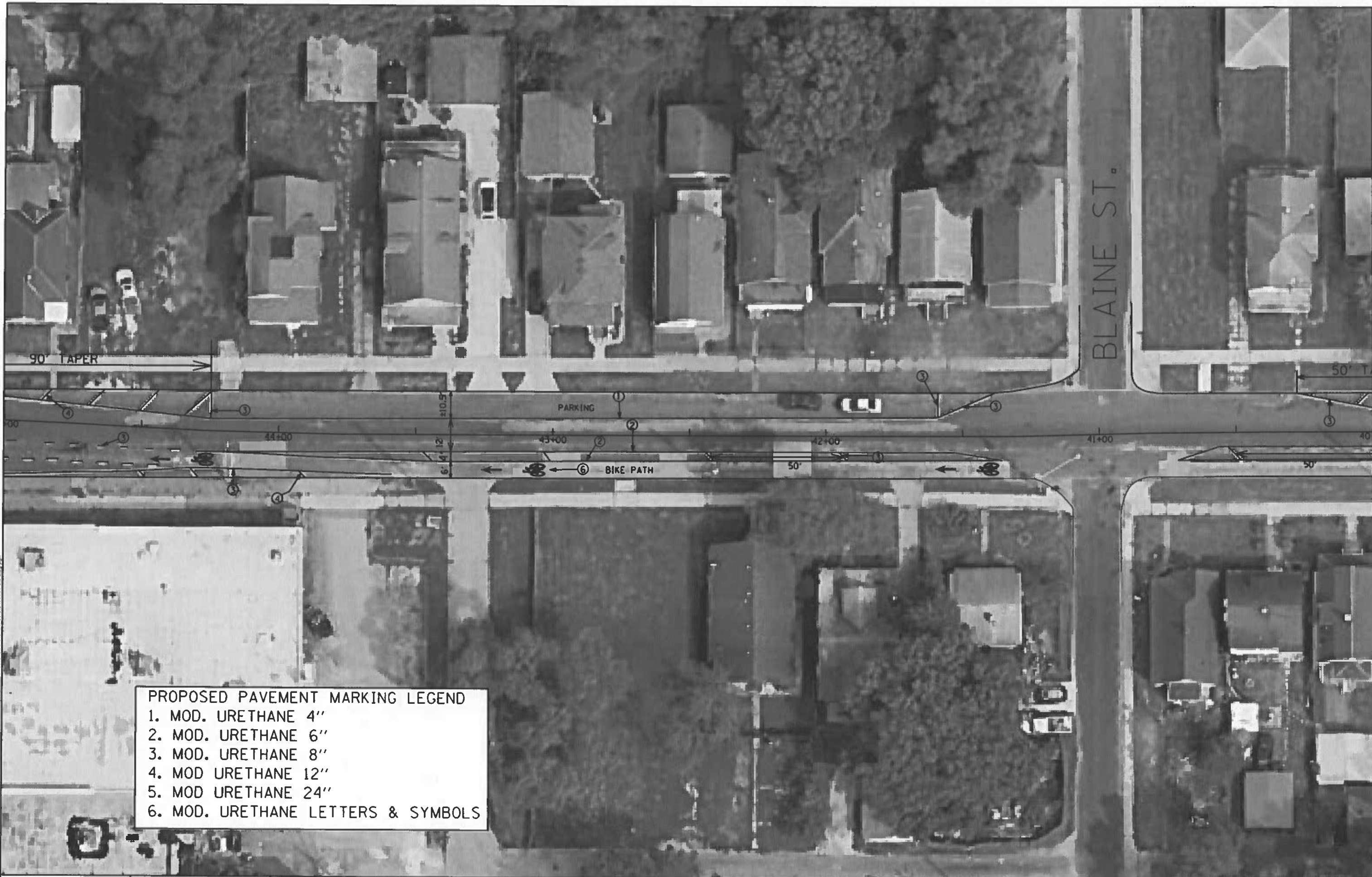
MODEL: Default  
 FILE NAME: \\GIS\civ\_bentley.com\PWDOT\Documents\DOT\_Office\District\_#7\Project\11104\_68H6R\CADD\Drawings\Sheet\04\axxx-04.dwg

USER NAME = Antonio Lewis	DESIGNED -	REVISED -
PLOT SCALE = 31.7463' / in.	DRAWN -	REVISED -
PLOT DATE = 9/29/2023	CHECKED -	REVISED -
	DATE -	REVISED -

**STATE OF ILLINOIS**  
**DEPARTMENT OF TRANSPORTATION**

**HOWETT PLAN SHEETS**  
 SCALE: SHEET OF SHEETS STA. TO STA.

F.A.P. RTE. 669	SECTION (10)RS-8	COUNTY PEORIA	TOTAL SHEETS 48	SHEET NO. 19
CONTRACT NO. 68H68				
ILLINOIS FED. AID PROJECT				



**PROPOSED PAVEMENT MARKING LEGEND**

- 1. MOD. URETHANE 4"
- 2. MOD. URETHANE 6"
- 3. MOD. URETHANE 8"
- 4. MOD URETHANE 12"
- 5. MOD URETHANE 24"
- 6. MOD. URETHANE LETTERS & SYMBOLS

MODEL: Default  
 FILE NAME: \\ludor.pw.bentley.com\p\DOT\Documents\DOT\_Office\ludor\4\Project\104\_68H68\CADD\Sheet\04.dwg

USER NAME	= Antonio Lewis	DESIGNED	-	REVISED	-
PLOT SCALE	= 31.7463 / in	DRAWN	-	REVISED	-
PLOT DATE	= 9/29/2023	CHECKED	-	REVISED	-
		DATE	-	REVISED	-

**STATE OF ILLINOIS**  
**DEPARTMENT OF TRANSPORTATION**

**HOWETT PLAN SHEETS**  
 SCALE: SHEET OF SHEETS STA TO STA.

F.A.P. RTE	SECTION	COUNTY	TOTAL SHEETS	SHEET NO.
669	(10)RS-8	PEORIA	48	20
CONTRACT NO. 68H68				
ILLINOIS FED. AID PROJECT				



**PROPOSED PAVEMENT MARKING LEGEND**

- 1. MOD. URETHANE 4"
- 2. MOD. URETHANE 6"
- 3. MOD. URETHANE 8"
- 4. MOD URETHANE 12"
- 5. MOD URETHANE 24"
- 6. MOD. URETHANE LETTERS & SYMBOLS

MODEL: Default  
 FILE NAME: \\gis\work\paw\_bentley.com\PWDOT\Documents\DOT\_Offices\District\_4\Projects\DA\_68H68\CADD\3A\CAD\Sheets\04xxxxx\_S&N\_bldg.dgn

USER NAME = Antonio Lewis	DESIGNED -	REVISED -
PLOT SCALE = 31.7463' = 1 in	DRAWN -	REVISED -
PLOT DATE = 9/29/2023	CHECKED -	REVISED -
	DATE -	REVISED -

**STATE OF ILLINOIS**  
**DEPARTMENT OF TRANSPORTATION**

**HOWETT PLAN SHEETS**  
 SCALE: SHEET OF SHEETS STA. TO STA.

F.A.P. RTE	SECTION	COUNTY	TOTAL SHEETS	SHEET NO.
669	(10)RS-8	PEORIA	48	21
CONTRACT NO. 68H68				
ILLINOIS FED. AID PROJECT				



**PROPOSED PAVEMENT MARKING LEGEND**

- 1. MOD. URETHANE 4"
- 2. MOD. URETHANE 6"
- 3. MOD. URETHANE 8"
- 4. MOD URETHANE 12"
- 5. MOD URETHANE 24"
- 6. MOD. URETHANE LETTERS & SYMBOLS

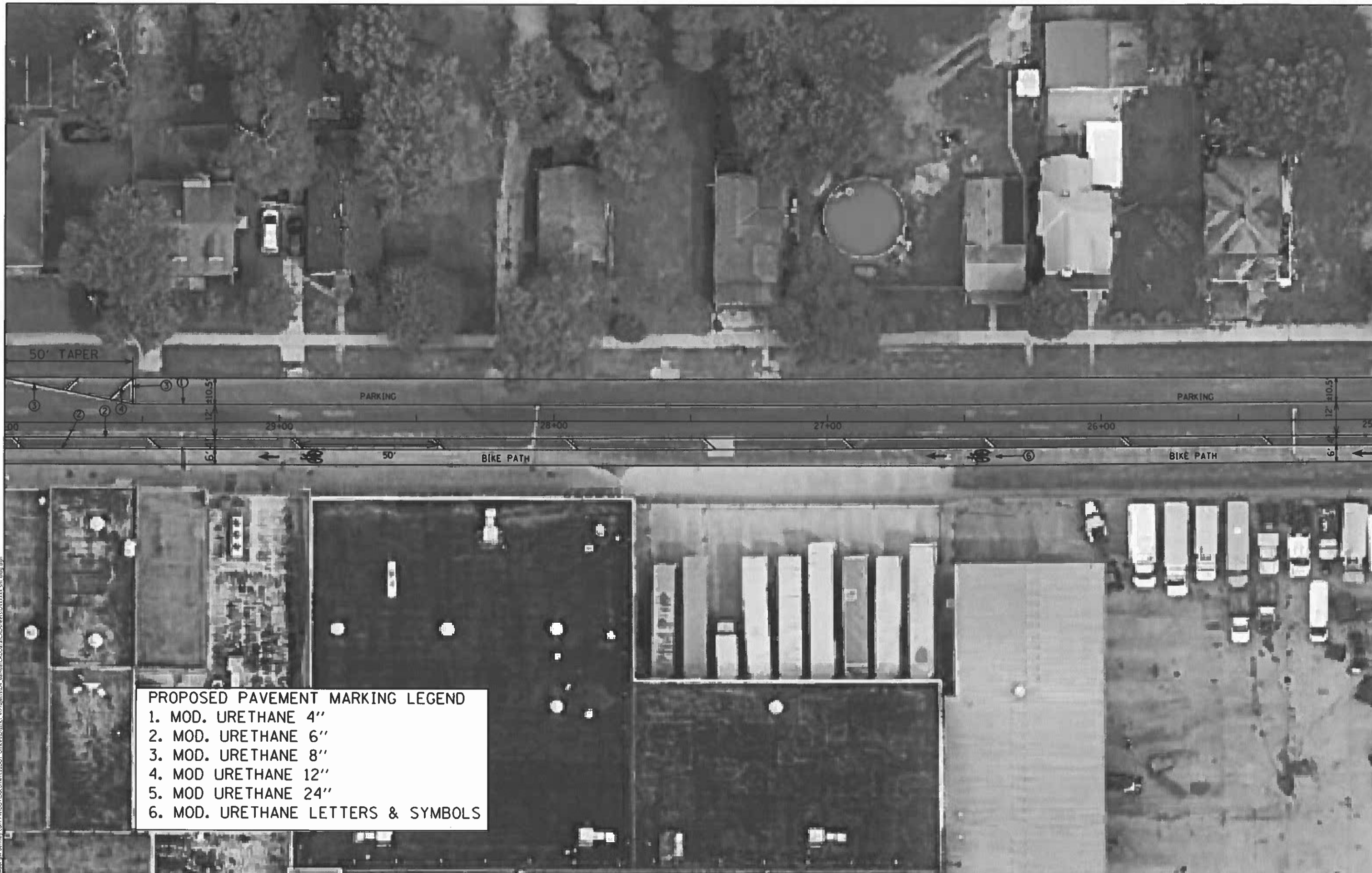
MODEL: Default  
 FILE NAME: \\p:\dot\m\berntm\com\p\dot\Documents\DOT\_Office\District\_4\Projects\04\_68H68\CAD\04\CAD\Sheet\04.dwg  
 PLOT DATE: 9/29/2023

USER NAME = Antonio Lewis	DESIGNED -	REVISED -
PLOT SCALE = 31.7463' / in	DRAWN -	REVISED -
PLOT DATE = 9/29/2023	CHECKED -	REVISED -
	DATE -	REVISED -

**STATE OF ILLINOIS**  
**DEPARTMENT OF TRANSPORTATION**

**HOWETT PLAN SHEETS**  
 SCALE: SHEET OF SHEETS STA. TO STA.

F.A.P. RTE.	SECTION	COUNTY	TOTAL SHEETS	SHEET NO.
669	(10)R5-8	PEORIA	48	22
CONTRACT NO. 68H68				
ILLINOIS FED. AID PROJECT				



**PROPOSED PAVEMENT MARKING LEGEND**

1. MOD. URETHANE 4"
2. MOD. URETHANE 6"
3. MOD. URETHANE 8"
4. MOD URETHANE 12"
5. MOD URETHANE 24"
6. MOD. URETHANE LETTERS & SYMBOLS

MODEL: D:\FAU\...  
 FILE NAME: ...  
 MODEL: D:\FAU\...  
 FILE NAME: ...

USER NAME = Antonio Lewis	DESIGNED -	REVISED -
PLOT SCALE = 31.7463' / in.	DRAWN -	REVISED -
PLOT DATE = 9/29/2023	CHECKED -	REVISED -
	DATE -	REVISED -

**STATE OF ILLINOIS**  
**DEPARTMENT OF TRANSPORTATION**

**HOWETT PLAN SHEETS**  
 SCALE: SHEET OF SHEETS STA TO STA.

F&P RTE	SECTION	COUNTY	TOTAL SHEETS	SHEET NO.
609	(10)RS-8	PEORIA	48	23
CONTRACT NO. 68H68				
ILLINOIS FED. AID PROJECT				



**PROPOSED PAVEMENT MARKING LEGEND**

1. MOD. URETHANE 4"
2. MOD. URETHANE 6"
3. MOD. URETHANE 8"
4. MOD URETHANE 12"
5. MOD URETHANE 24"
6. MOD. URETHANE LETTERS & SYMBOLS

MODEL: Default  
 FILE NAME: \\ms001\aw\_bentley.com\PIV\DOT\Documents\DOT\_Office\District\_10\Projects\68H68\CA\Drawings\68H68-CA\Drawings\68H68-CA.dwg

USER NAME = Antonio Lewis	DESIGNED -	REVISED -
PLOT SCALE = 31.7463' / in.	DRAWN -	REVISED -
PLOT DATE = 9/29/2023	CHECKED -	REVISED -
	DATE -	REVISED -

**STATE OF ILLINOIS**  
**DEPARTMENT OF TRANSPORTATION**

**HOWETT PLAN SHEETS**  
 SCALE: SHEET OF SHEETS STA. TO STA.

F.A.P. RTE.	SECTION	COUNTY	TOTAL SHEETS	SHEET NO.
669	(10)RS-8	PEORIA	48	24
CONTRACT NO. 68H68				
ILLINOIS FED. AID PROJECT				





**PROPOSED PAVEMENT MARKING LEGEND**

- 1. MOD. URETHANE 4"
- 2. MOD. URETHANE 6"
- 3. MOD. URETHANE 8"
- 4. MOD URETHANE 12"
- 5. MOD URETHANE 24"
- 6. MOD. URETHANE LETTERS & SYMBOLS

MODEL: DEFAULT  
 FILE NAME: \\m:\illinois\aw\_bentley.com\PROJECTS\DOCUMENTS\DOT\_Official\District\_A\m\peoria\68H68\CA002\CA002\SheetList\SheetList.dwg

USER NAME = Antonio Lewis	DESIGNED -	REVISED -
PLOT SCALE = 31.7463 / in	DRAWN -	REVISED -
PLOT DATE = 9/29/2023	CHECKED -	REVISED -
	DATE -	REVISED -

**STATE OF ILLINOIS**  
**DEPARTMENT OF TRANSPORTATION**

**HOWETT PLAN SHEETS**  
 SCALE: SHEET OF SHEETS STA. TO STA.

F.A.P. RTE.	SECTION	COUNTY	TOTAL SHEETS	SHEET NO.
669	(10)RS-8	PEORIA	48	25
CONTRACT NO. 68H68				
ILLINOIS FED. AID PROJECT				

CHARLTON ST

HOWETT



**PROPOSED PAVEMENT MARKING LEGEND**

- 1. MOD. URETHANE 4"
- 2. MOD. URETHANE 6"
- 3. MOD. URETHANE 8"
- 4. MOD URETHANE 12"
- 5. MOD URETHANE 24"
- 6. MOD. URETHANE LETTERS & SYMBOLS

MODEL: Default  
FILE NAME: \\gis\gis\pww\pww\Documents\DOT\_Orion\District\_Images\104\_68H68\CADD\104\_68H68\104\_68H68\104\_68H68.dwg

USER NAME = Antonio Lewis	DESIGNED -	REVISED -
PLOT SCALE = 31.7463 / in.	DRAWN -	REVISED -
PLOT DATE = 9/29/2023	CHECKED -	REVISED -
	DATE -	REVISED -

**STATE OF ILLINOIS  
DEPARTMENT OF TRANSPORTATION**

**HOWETT PLAN SHEETS**

SCALE: SHEET OF SHEETS STA TO STA.

F.A.P. RTE.	SECTION	COUNTY	TOTAL SHEETS	SHEET NO.
669	(10)RS-8	PEORIA	48	26
CONTRACT NO. 68H68				
ILLINOIS FED. AID PROJECT				



**PROPOSED PAVEMENT MARKING LEGEND**

- 1. MOD. URETHANE 4"
- 2. MOD. URETHANE 6"
- 3. MOD. URETHANE 8"
- 4. MOD URETHANE 12"
- 5. MOD URETHANE 24"
- 6. MOD. URETHANE LETTERS & SYMBOLS

MODEL: Default  
 FILE NAME: \\wll001\pwr\Documents\DOT\_Oliget\Project\104\_68166\CA\DD\CA\Drawings\DOT\Drawings\68H68.dwg

USER NAME = Antonio Lewis	DESIGNED -	REVISED -
PLOT SCALE = 31.7463' / in.	DRAWN -	REVISED -
PLOT DATE = 9/29/2023	CHECKED -	REVISED -
	DATE -	REVISED -

**STATE OF ILLINOIS**  
**DEPARTMENT OF TRANSPORTATION**

**HOWETT PLAN SHEETS**  
 SCALE: SHEET OF SHEETS STA. TO STA.

F.A.P. RTE. 669	SECTION (10)RS-8	COUNTY PEORIA	TOTAL SHEETS 48	SHEET NO. 27
CONTRACT NO. 68H68				
ILLINOIS FED. AID PROJECT				



**PROPOSED PAVEMENT MARKING LEGEND**

1. MOD. URETHANE 4"
2. MOD. URETHANE 6"
3. MOD. URETHANE 8"
4. MOD URETHANE 12"
5. MOD URETHANE 24"
6. MOD. URETHANE LETTERS & SYMBOLS

MODEL Default  
 FILE NAME \\s:\dot\paw\_bentley.com\PIW\DOT\Documents\IJDOT\_Office\paw\struct\_alpha\paw\68H6\CA000\CA0Sheet15104xxxxx.pnt.dwg

USER NAME = Antonio Lewis	DESIGNED -	REVISED -
PLOT SCALE = 31.7463' / in	DRAWN -	REVISED -
PLOT DATE = 9/29/2023	CHECKED -	REVISED -
	DATE -	REVISED -

**STATE OF ILLINOIS**  
**DEPARTMENT OF TRANSPORTATION**

**HOWETT PLAN SHEETS**  
 SCALE: SHEET OF SHEETS STA. TO STA.

F.A.P. RTE. 669	SECTION (10)RS-8	COUNTY PEORIA	TOTAL SHEETS 48	SHEET NO. 28
CONTRACT NO. 68H68				
ILLINOIS FED. AID PROJECT				



**PROPOSED PAVEMENT MARKING LEGEND**

- 1. MOD. URETHANE 4"
- 2. MOD. URETHANE 6"
- 3. MOD. URETHANE 8"
- 4. MOD URETHANE 12"
- 5. MOD URETHANE 24"
- 6. MOD. URETHANE LETTERS & SYMBOLS

MODEL: Dcbwuf  
 FILE NAME: \\w0061101.bentley.com:PWIDOT\Documents\DOT\_Offices\District\_4\Projects\15104\_68H68\CAD\Drawings\CDP\68H68.Dwg

USER NAME = Antonio Lewis	DESIGNED -	REVISED -
PLOT SCALE = 31.7461' / in	DRAWN -	REVISED -
PLOT DATE = 9/29/2023	CHECKED -	REVISED -
	DATE -	REVISED -

**STATE OF ILLINOIS**  
**DEPARTMENT OF TRANSPORTATION**

**LINCOLN PLAN SHEETS**  
 SCALE: SHEET OF SHEETS STA. TO STA.

F.A.P. RTE.	SECTION	COUNTY	TOTAL SHEETS	SHEET NO.
869	(10)RS-8	PEORIA	48	29
CONTRACT NO. 68H68				
ILLINOIS FED. AID PROJECT				



**PROPOSED PAVEMENT MARKING LEGEND**  
 1. MOD. URETHANE 4"  
 2. MOD. URETHANE 6"  
 3. MOD. URETHANE 8"  
 4. MOD URETHANE 12"  
 5. MOD URETHANE 24"  
 6. MOD. URETHANE LETTERS & SYMBOLS

MODEL: Default  
 FILE NAME: I:\AutoCAD\Bentley.com\WIP\DOT\Documents\DOT\Office\IDistrict4\Project\104\_68H68\CADData\CAD\Sheet\15Dax.rvt.plt-bldg.dwg

USER NAME = Antonio Lewis	DESIGNED -	REVISED -
	DRAWN -	REVISED -
PLOT SCALE = 31.7461' / in	CHECKED -	REVISED -
PLOT DATE = 9/29/2023	DATE -	REVISED -

**STATE OF ILLINOIS  
 DEPARTMENT OF TRANSPORTATION**

**LINCOLN PLAN SHEETS**

SCALE: SHEET OF SHEETS STA. TO STA.

F.A.P. RTE.	SECTION	COUNTY	TOTAL SHEETS	SHEET NO.
669	(10)RS-8	PEORIA	48	30
CONTRACT NO. 68H68				
ILLINOIS FED AID PROJECT				

WESTMORELAND



**PROPOSED PAVEMENT MARKING LEGEND**  
 1. MOD. URETHANE 4"  
 2. MOD. URETHANE 6"  
 3. MOD. URETHANE 8"  
 4. MOD URETHANE 12"  
 5. MOD URETHANE 24"  
 6. MOD. URETHANE LETTERS & SYMBOLS

MODEL: Default  
 FILE NAME: \\ltd01-gw-bentley.com\pwt\DOT\Documents\DOT\_Offices\District\_4\Projects\04\_68H6R\CADD\DATA\68H6R\68H6R.dwg

USER NAME = Antonio Lewis	DESIGNED -	REVISED -
PLOT SCALE = 31.7461" / in	DRAWN -	REVISED -
PLOT DATE = 9/29/2023	CHECKED -	REVISED -
	DATE -	REVISED -

**STATE OF ILLINOIS  
 DEPARTMENT OF TRANSPORTATION**

**LINCOLN PLAN SHEETS**

SCALE: SHEET OF SHEETS STA. TO STA.

F.A.P. RTE.	SECTION	COUNTY	TOTAL SHEETS	SHEET NO.
669	(10)RS-8	PEORIA	48	31
CONTRACT NO. 68H68				
ILLINOIS FED. AID PROJECT				



**PROPOSED PAVEMENT MARKING LEGEND**

- 1. MOD. URETHANE 4"
- 2. MOD. URETHANE 6"
- 3. MOD. URETHANE 8"
- 4. MOD URETHANE 12"
- 5. MOD URETHANE 24"
- 6. MOD. URETHANE LETTERS & SYMBOLS

MODEL: Default  
 FILE NAME: \\vls001\p\benley.com\PIV\DOT\Documents\DOT\_Offices\District\_#1\mes13\24\_68H68\CADD\24\_68H68\CADD\24\_68H68\CON\blg.dwg

USER NAME	= Antonio.Lewis	DESIGNED	-	REVISED	-
PLOT SCALE	= 31.7461 / in	DRAWN	-	REVISED	-
PLOT DATE	= 9/29/2023	CHECKED	-	REVISED	-
		DATE	-	REVISED	-

**STATE OF ILLINOIS**  
**DEPARTMENT OF TRANSPORTATION**

**LINCOLN PLAN SHEETS**  
 SCALE: SHEET OF SHEETS STA TO STA

F&P RITE	SECTION	COUNTY	TOTAL SHEETS	SHEET NO.
669	(10)RS-8	PEORIA	48	32
CONTRACT NO. 68H68				
ILLINOIS FED. AID PROJECT				





**PROPOSED PAVEMENT MARKING LEGEND**

1. MOD. URETHANE 4"
2. MOD. URETHANE 6"
3. MOD. URETHANE 8"
4. MOD URETHANE 12"
5. MOD URETHANE 24"
6. MOD. URETHANE LETTERS & SYMBOLS

MODEL: Default  
 FILE NAME: \\ltdcaw-bentley.com\ltdcaw-bentley.com\PROJECTS\DOT\_Orign\DOT\68H68\68H68\CADD\68H68\68H68\68H68.dwg

USER NAME = Antonio Lewis	DESIGNED -	REVISED -
PLOT SCALE = 31.7461" = 1"	DRAWN -	REVISED -
PLOT DATE = 9/29/2023	CHECKED -	REVISED -
	DATE -	REVISED -

**STATE OF ILLINOIS  
DEPARTMENT OF TRANSPORTATION**

**LINCOLN PLAN SHEETS**

SCALE: SHEET OF SHEETS STA. TO STA.

F A P RTE	SECTION	COUNTY	TOTAL SHEETS	SHEET NO.
669	(10)RS-8	PEORIA	48	33
CONTRACT NO. 68H68				
ILLINOIS FED. AID PROJECT				



**PROPOSED PAVEMENT MARKING LEGEND**

1. MOD. URETHANE 4"
2. MOD. URETHANE 6"
3. MOD. URETHANE 8"
4. MOD URETHANE 12"
5. MOD URETHANE 24"
6. MOD. URETHANE LETTERS & SYMBOLS

MODEL: Default  
 FILE NAME: s:\v\669\669\Documents\DOT\_Offices\District\_4\Projects\04\_68H68\CADD\04\_68H68\CADD\04\_68H68\DOT\04\_68H68\DOT\04\_68H68.dwg

USER NAME = Antonio Lewis	DESIGNED -	REVISED -
PLOT SCALE = 31.7461' / in	DRAWN -	REVISED -
PLOT DATE = 9/29/2023	CHECKED -	REVISED -
	DATE -	REVISED -

**STATE OF ILLINOIS**  
**DEPARTMENT OF TRANSPORTATION**

**LINCOLN PLAN SHEETS**  
 SCALE: SHEET OF SHEETS STA TO STA

F.A.P. RTE	SECTION	COUNTY	TOTAL SHEETS	SHEET NO.
669	(10)RS-8	PEORIA	48	34
CONTRACT NO. 68H68				
ILLINOIS FED. AID PROJECT				



**PROPOSED PAVEMENT MARKING LEGEND**

- 1. MOD. URETHANE 4"
- 2. MOD. URETHANE 6"
- 3. MOD. URETHANE 8"
- 4. MOD URETHANE 12"
- 5. MOD URETHANE 24"
- 6. MOD. URETHANE LETTERS & SYMBOLS

MODEL: Default  
 FILE NAME: \\illinois.gov\benley.com\PROJECTS\DOT\Office\District 4\Projects\04\_68H68\CAD\Drawings\CAD\Drawings\PL\68H68.dwg

USER NAME = Antonio Lewis	DESIGNED -	REVISED -
PLOT SCALE = 31.7461' / in	DRAWN -	REVISED -
PLOT DATE = 9/29/2023	CHECKED -	REVISED -
	DATE -	REVISED -

**STATE OF ILLINOIS**  
**DEPARTMENT OF TRANSPORTATION**

**LINCOLN PLAN SHEETS**  
 SCALE: SHEET OF SHEETS STA. TO STA.

F.A.P. RTE	SECTION	COUNTY	TOTAL SHEETS	SHEET NO.
669	(10)RS-8	PEORIA	48	35
CONTRACT NO. 68H68				
ILLINOIS FED. AID PROJECT				



**PROPOSED PAVEMENT MARKING LEGEND**

- 1. MOD. URETHANE 4"
- 2. MOD. URETHANE 6"
- 3. MOD. URETHANE 8"
- 4. MOD URETHANE 12"
- 5. MOD URETHANE 24"
- 6. MOD. URETHANE LETTERS & SYMBOLS

MODEL: Default  
 FILE NAME: \\usdotgw-bentley.com\pwwd\Documents\DOT\_Office\District\_4\Projects\DA\_68H68\CADD\Aerial\CAD\Sheet104.dwg  
 68H68

USER NAME = Antonio Lewis	DESIGNED -	REVISED -
PLOT SCALE = 31.7461' / in	DRAWN -	REVISED -
PLOT DATE = 9/29/2023	CHECKED -	REVISED -
	DATE -	REVISED -

**STATE OF ILLINOIS**  
**DEPARTMENT OF TRANSPORTATION**

**LINCOLN PLAN SHEETS**

SCALE      SHEET      OF      SHEETS      STA.      TO      STA.

F.A.P. RTE	SECTION	COUNTY	TOTAL SHEETS	SHEET NO.
669	(10)RS-8	PEORIA	48	36
CONTRACT NO. 68H68				
ILLINOIS FED. AID PROJECT				



**PROPOSED PAVEMENT MARKING LEGEND**

- 1. MOD. URETHANE 4"
- 2. MOD. URETHANE 6"
- 3. MOD. URETHANE 8"
- 4. MOD URETHANE 12"
- 5. MOD URETHANE 24"
- 6. MOD. URETHANE LETTERS & SYMBOLS

MODEL Default  
 FILE NAME \\ltd01\paw Bentley.com\PI\DOT\Documents\DOT\_Offices\District\_4\Project\68H68\68H68\_CADD\68H68\_CADD\68H68\_CADD\68H68\_CADD.dwg

USER NAME = Antonio Lewis	DESIGNED -	REVISED -
PLOT SCALE = 31.7461' / in	DRAWN -	REVISED -
PLOT DATE = 9/29/2023	CHECKED -	REVISED -
	DATE -	REVISED -

**STATE OF ILLINOIS**  
**DEPARTMENT OF TRANSPORTATION**

**LINCOLN PLAN SHEETS**  
 SCALE SHEET OF SHEETS STA. TO STA.

F.A.P. RTE 669	SECTION (10)RS-8	COUNTY PEORIA	TOTAL SHEETS 48	SHEET NO. 37
CONTRACT NO. 68H68				
ILLINOIS FED. AID PROJECT				

MODEL: Default  
 FILE NAME: \\hwd01\documents\j\DOT - Offices\IDistrict 4\Projects\IS04\_68H68\CADD\DATA\CAD\sheet151D.dwg



**PROPOSED PAVEMENT MARKING LEGEND**

- 1. MOD. URETHANE 4"
- 2. MOD. URETHANE 6"
- 3. MOD. URETHANE 8"
- 4. MOD URETHANE 12"
- 5. MOD URETHANE 24"
- 6. MOD. URETHANE LETTERS & SYMBOLS

USER NAME = Antonio Lewis	DESIGNED -	REVISED -
PLOT SCALE = 31.7461' / in	DRAWN -	REVISED -
PLOT DATE = 9/29/2023	CHECKED -	REVISED -
	DATE -	REVISED -

**STATE OF ILLINOIS  
 DEPARTMENT OF TRANSPORTATION**

LINCOLN PLAN SHEETS	
SCALE:	SHEET OF SHEETS STA. TO STA.

F.A.P. RTE	SECTION	COUNTY	TOTAL SHEETS	SHEET NO.
669	(10)RS-8	PEORIA	48	38
CONTRACT NO. 68H68				
ILLINOIS FED. AID PROJECT				



**PROPOSED PAVEMENT MARKING LEGEND**

- 1. MOD. URETHANE 4"
- 2. MOD. URETHANE 6"
- 3. MOD. URETHANE 8"
- 4. MOD URETHANE 12"
- 5. MOD URETHANE 24"
- 6. MOD. URETHANE LETTERS & SYMBOLS

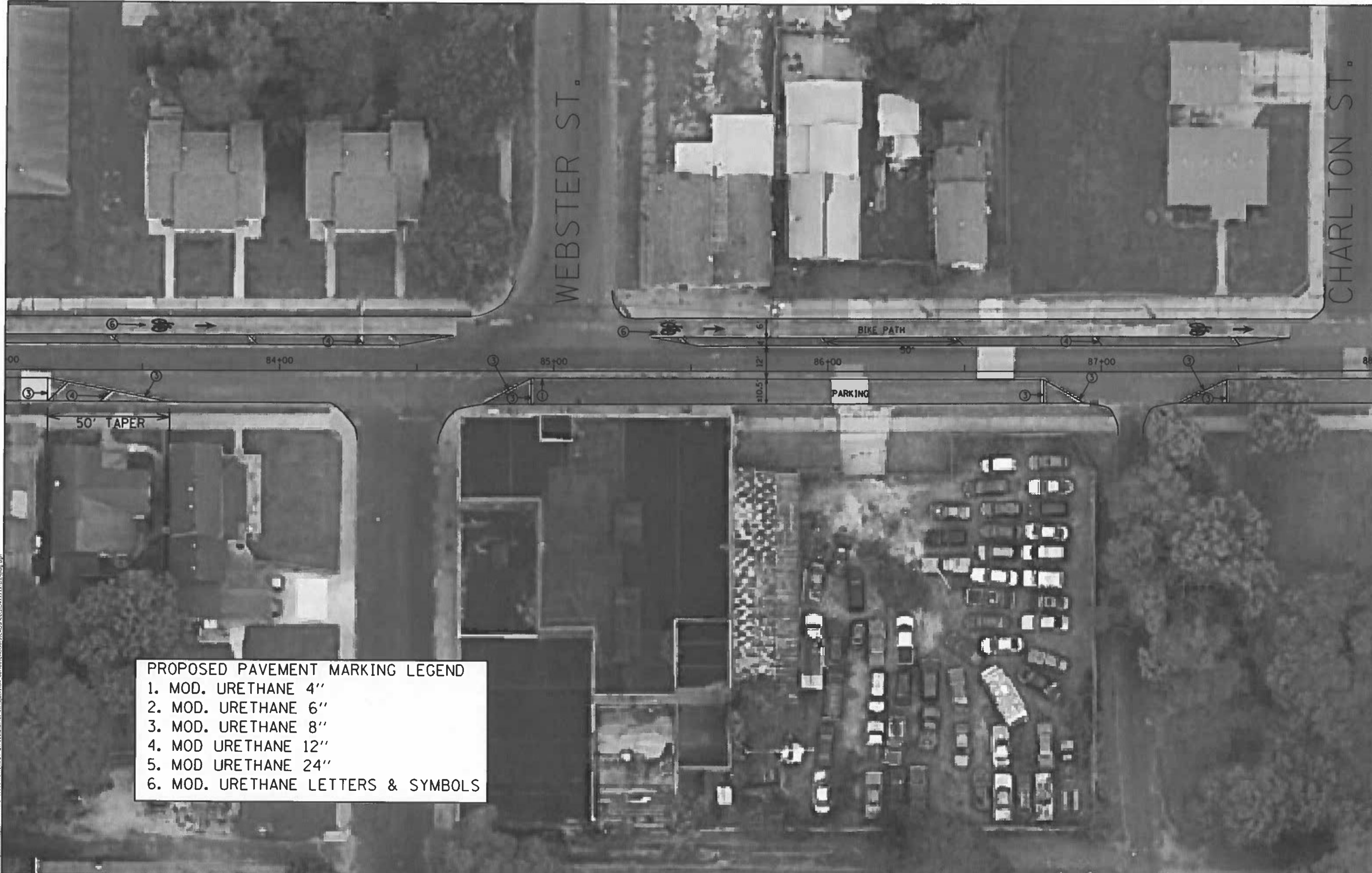
MODEL: Default  
 FILE NAME: \\usdcg-jm-bentley.com\pwwork\Documents\DOT\_Offices\District\_4\Projects\104\_68H68\CADD\8\CAD\Sheets\104xxxxx.dwg

USER NAME	= Antonio Lewis	DESIGNED	-	REVISED	-
PLOT SCALE	= 31.7461' / in.	DRAWN	-	REVISED	-
PLOT DATE	= 9/29/2023	CHECKED	-	REVISED	-
		DATE	-	REVISED	-

**STATE OF ILLINOIS**  
**DEPARTMENT OF TRANSPORTATION**

**LINCOLN PLAN SHEETS**  
 SCALE: SHEET OF SHEETS STA. TO STA.

F.A.P. RTE	SECTION	COUNTY	TOTAL SHEETS	SHEET NO.
669	(10)RS-8	PEORIA	48	39
CONTRACT NO. 68H68				
ILLINOIS FED. AID PROJECT				



**PROPOSED PAVEMENT MARKING LEGEND**

1. MOD. URETHANE 4"
2. MOD. URETHANE 6"
3. MOD. URETHANE 8"
4. MOD URETHANE 12"
5. MOD URETHANE 24"
6. MOD. URETHANE LETTERS & SYMBOLS

MODEL: DefAur  
 FILE NAME: \\wv01dot1\Documents\DOT\_Offices\District\_4\Projects\68H68\CAD\Drawings\CAD\Drawings\68H68.dwg

USER NAME = Antonio Lewis	DESIGNED -	REVISED -
PLOT SCALE = 31.7461" / in	DRAWN -	REVISED -
PLOT DATE = 9/29/2023	CHECKED -	REVISED -
	DATE -	REVISED -

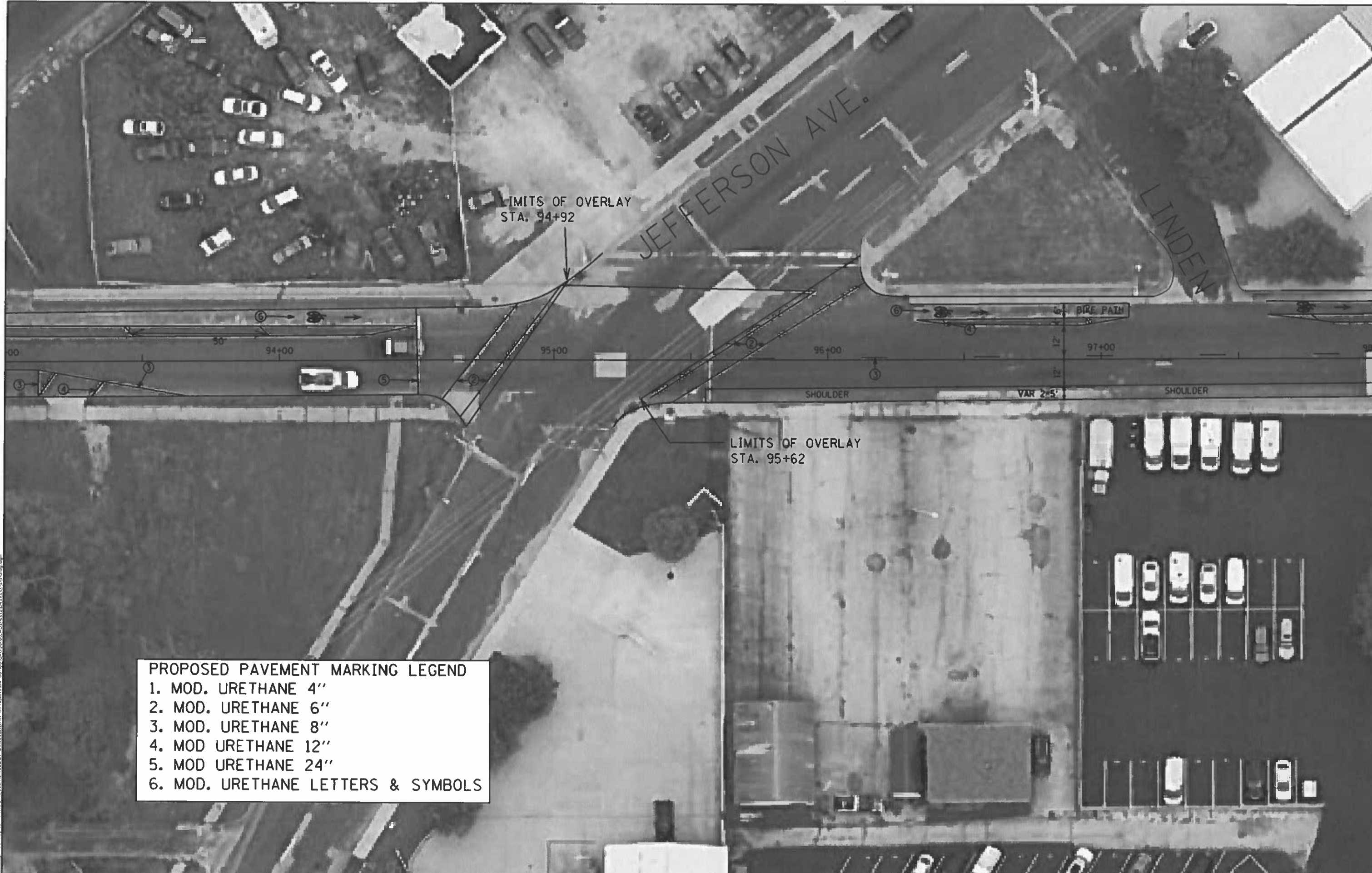
**STATE OF ILLINOIS**  
**DEPARTMENT OF TRANSPORTATION**

**LINCOLN PLAN SHEETS**  
 SCALE: SHEET OF SHEETS STA TO STA

F&P R/E	SECTION	COUNTY	TOTAL SHEETS	SHEET NO.
669	(10)R5-B	PEORIA	48	40
CONTRACT NO 68H68				
ILLINOIS FED. AID PROJECT				







**PROPOSED PAVEMENT MARKING LEGEND**

1. MOD. URETHANE 4"
2. MOD. URETHANE 6"
3. MOD. URETHANE 8"
4. MOD URETHANE 12"
5. MOD URETHANE 24"
6. MOD. URETHANE LETTERS & SYMBOLS

MODEL: Default  
 FILE NAME: \\p10001\documents\DOT - Office\District: 41\Projects\101\48166\CAD\Drawings\101\48166\101\48166.dwg

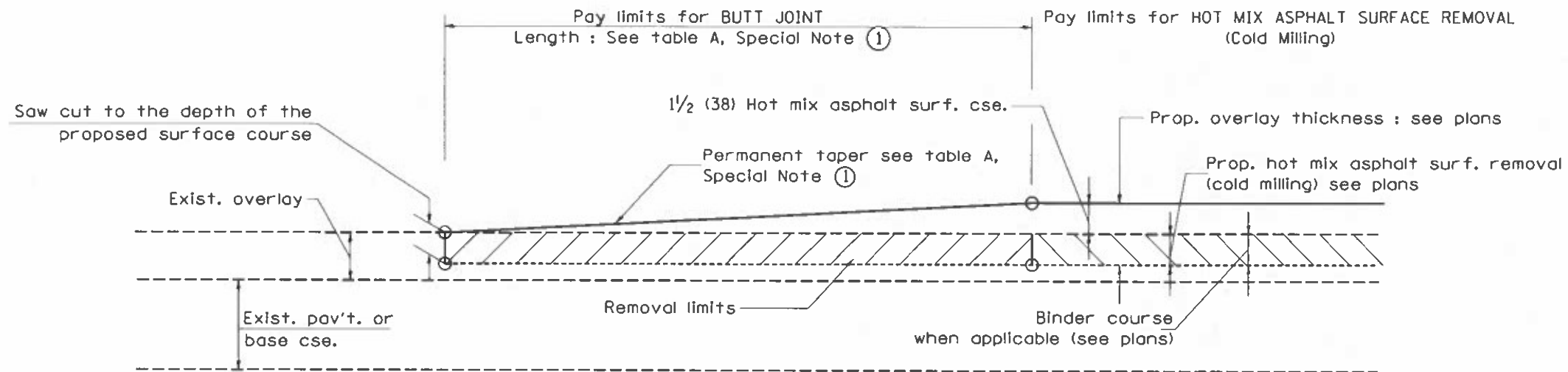
USER NAME	Antonio Lewis	DESIGNED	-	REVISED	-
PLOT SCALE	31 7461" / in	DRAWN	-	REVISED	-
PLOT DATE	9/29/2023	CHECKED	-	REVISED	-
		DATE	-	REVISED	-

**STATE OF ILLINOIS**  
**DEPARTMENT OF TRANSPORTATION**

**LINCOLN PLAN SHEETS**  
 SCALE: SHEET OF SHEETS STA. TO STA.

F.A.P. RTE	SECTION	COUNTY	TOTAL SHEETS	SHEET NO.
669	(10)RS-8	PEORIA	48	42
CONTRACT NO. 68H68				
ILLINOIS FED AID PROJECT				





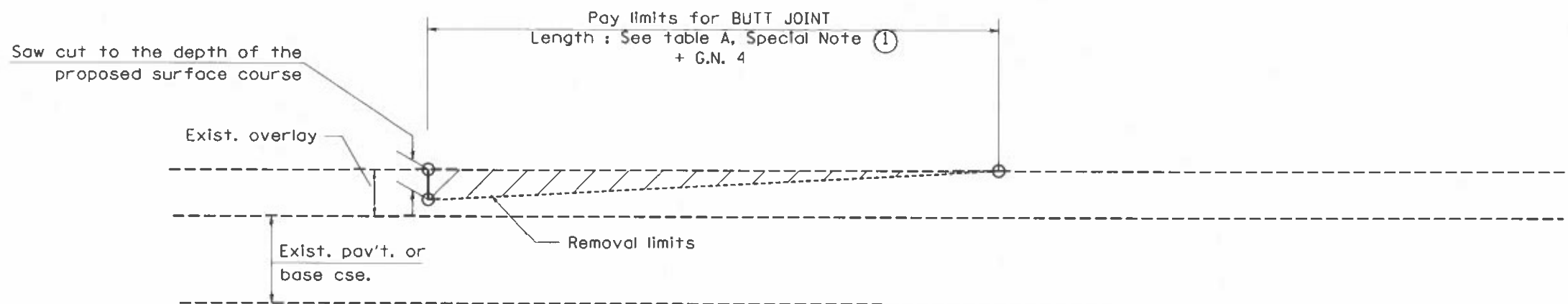
**CASE 1 : WITH HOT MIX ASPHALT SURFACE REMOVAL (COLD MILLING)**

**TABLE A  
TAPER RATES**

SPECIAL NOTE NUMBER	ELEMENT	MAINLINE INTERSTATES & 4-LANE EXPRESSWAYS	ALL OTHERS
①	BUTT JOINT TAPER RATE	1:480	1:240
②	TEMPORARY RAMP TAPER RATE	1:80	1:40

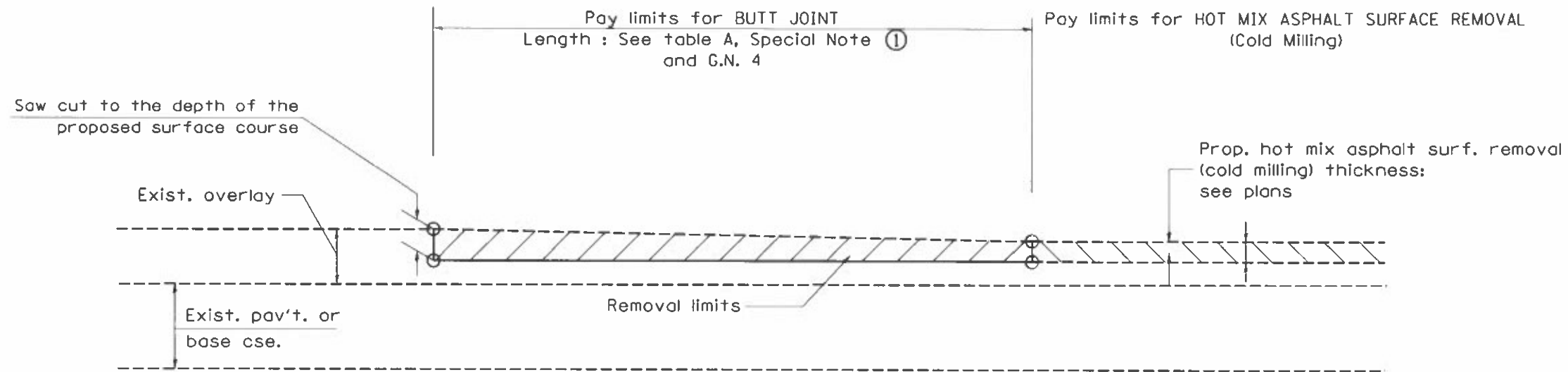
**GENERAL NOTES**

- The work shall be done in accordance with Article 406.08 and the Special Provision for Butt Joints.
- The pavement surface to be removed may be either bituminous or P.C. concrete. The work shall be performed in accordance with Article 440.04 and the Special Provisions for Butt Joints.
- The saw cut joints shall be primed just prior to the placing of bituminous material. The work will be in accordance with the applicable portions of Article 406.05.
- The length of butt joint is based on the taper rate times change in cold milling depth within the butt joint pay limits, unless otherwise indicated.
- Temporary ramps are paid for separately and not included in the cost of the butt joints.

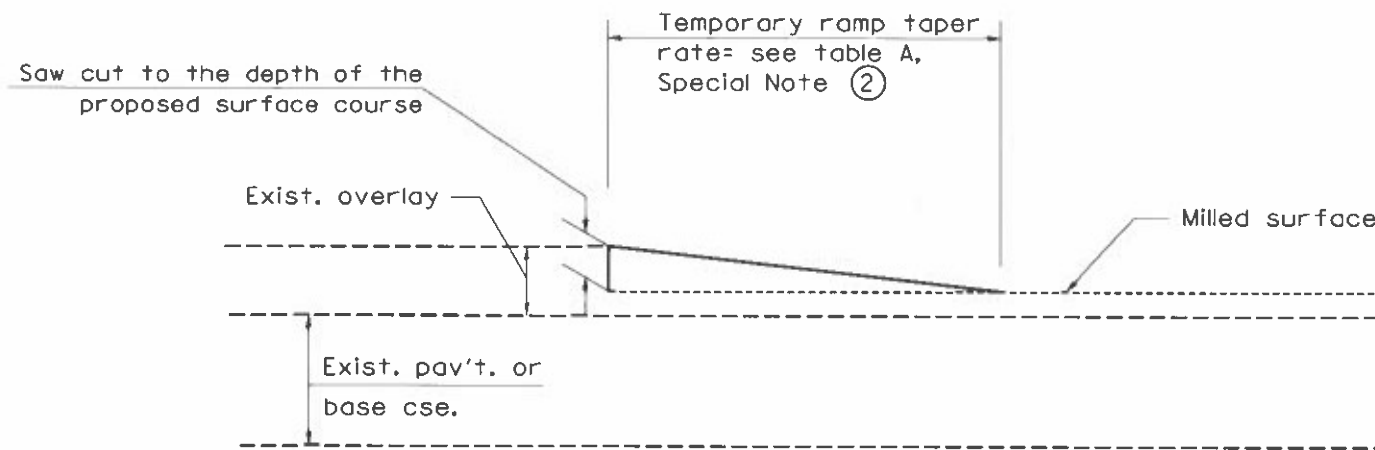


**CASE 2 : NO HOT MIX ASPHALT SURFACE REMOVAL (COLD MILLING)**

All dimensions are in inches (millimeters) unless otherwise noted.



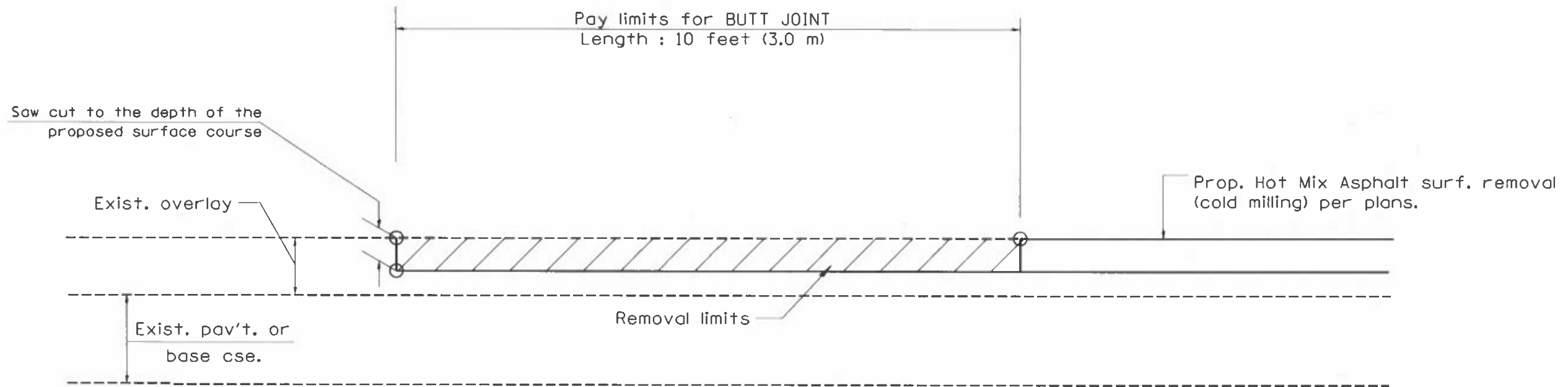
**CASE 3 : HOT MIX ASPHALT SURFACE REMOVAL (COLD MILLING)  
TIE-IN TO EXISTING BITUMINOUS TAPER**



**DETAIL TEMPORARY RAMP**

All dimensions are in inches (millimeters) unless otherwise noted.

				<b>STATE OF ILLINOIS DEPARTMENT OF TRANSPORTATION</b>		<b>BUTT JOINTS</b>		SHT. 2 OF 3 CAOD STD. 406101-D4		F.A. RTE. 669		SECTION 1101RS-B		COUNTY PEORIA		TOTAL SHEETS 48		SHEET NO. 45		CONTRACT NO. 68M68	
				NOT TO SCALE				FED. ROAD DIST. NO.		ILLINOIS		FED. AID PROJECT									



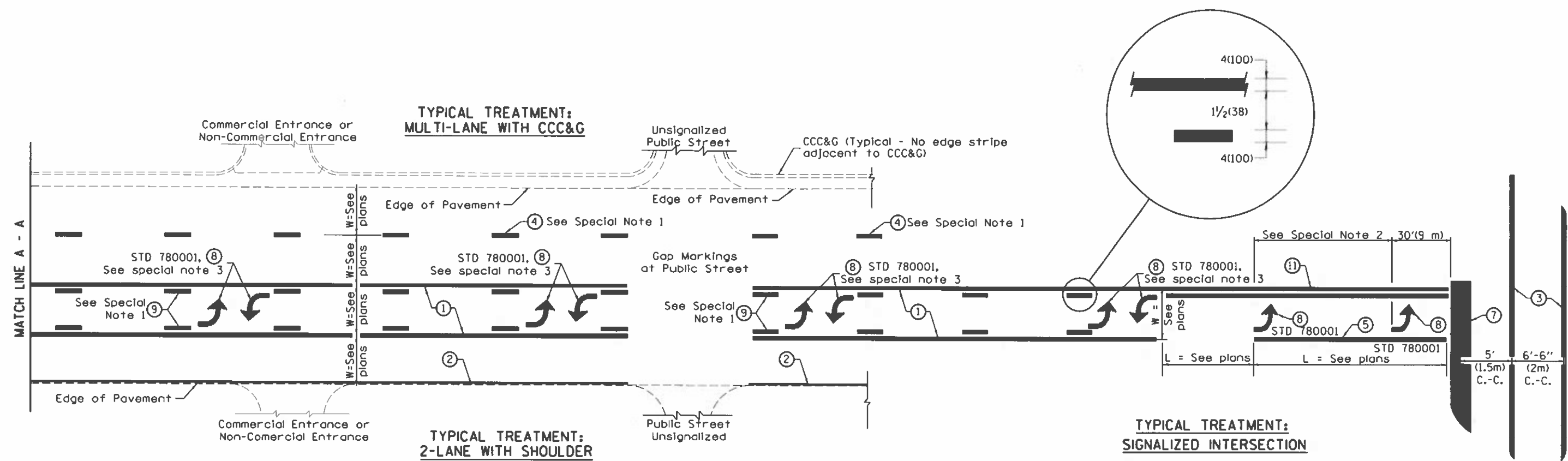
**CASE 4 : SINGLE LIFT OVERLAY WITH EQUIVALENT DEPTH  
HOT MIX ASPHALT SURFACE REMOVAL (COLD MILLING)  
TIE-IN TO EXISTING BITUMINOUS TAPER**

All dimensions are in inches (millimeters) unless otherwise noted.

				<b>STATE OF ILLINOIS DEPARTMENT OF TRANSPORTATION</b>		<b>BUTT JOINTS</b>		SHT. 3 OF 3 CADD STD. 406101-D4		<table border="1"> <tr> <td>F.A. RTE.</td> <td>SECTION</td> <td>COUNTY</td> <td>TOTAL SHEETS</td> <td>SHEET NO.</td> </tr> <tr> <td>669</td> <td>110RS-B</td> <td>PEORIA</td> <td>48</td> <td>46</td> </tr> <tr> <td colspan="3">FED. ROAD DIST. NO.</td> <td colspan="2">ILLINOIS FED. AID PROJECT</td> </tr> </table>		F.A. RTE.	SECTION	COUNTY	TOTAL SHEETS	SHEET NO.	669	110RS-B	PEORIA	48	46	FED. ROAD DIST. NO.			ILLINOIS FED. AID PROJECT	
F.A. RTE.	SECTION	COUNTY	TOTAL SHEETS	SHEET NO.																						
669	110RS-B	PEORIA	48	46																						
FED. ROAD DIST. NO.			ILLINOIS FED. AID PROJECT																							
				NOT TO SCALE				CONTRACT NO. 68H68																		

DESIGNER NOTES:

1. Include State Standard 780001 (Typical Pavement Markings)



**FLUSH PAVED MEDIAN; TWO-WAY LEFT TURN LANE WITH ONE-WAY LEFT TURN LANE AT SIGNALIZED INTERSECTION**

**TYPICAL PAVEMENT MARKING LEGEND**

(Note: This is a District Standard Legend. Some elements may not apply to specific project.)

- ① 4(100) Solid (Yellow)
- ② 4(100) Solid (White)
- ③ 2-6(150) Crosswalk @ 6'-6" (2m)min C.-C. (White)  
2-8(200) Crosswalk @ 6'-6" (2m)min C.-C. (White) (When traffic signals are present.)
- ④ 6(150) Skip-Dash (White) (See Special Note 1)
- ⑤ 8(200) Solid (White)
- ⑥ 12(300) Diagonal (White) (Item ⑥ is shown on Std. 780001)
- ⑦ 24(600) Stop Bar (White)
- ⑧ Letters & Arrows (See Std. 780001 and Special Notes 2 & 3)
- ⑨ 4(100) Skip-Dash (Yellow) (See Special Note 1)
- ⑩ 12(300) Diagonal (Yellow) (See Table A) (See Table A)
- ⑪ 4(100) Double Solid (Yellow) (See Table A)

**SPECIAL NOTES**

1. Skip-Dash markings will be centered between both ends of city blocks and shall be placed in alignment transversely across the pavement.
2. The following shall apply to arrows located in one-way left turn lanes:
  - A. A minimum of two (2) arrows is required.
  - B. The maximum spacing between arrows is 80' (24 m).
  - C. Arrows shall be evenly spaced if three (3) or more are required.
3. The following shall apply to arrow pairs located in two-way left turn lanes:
  - A. A minimum of two (2) arrow pairs is required.
  - B. The maximum spacing between arrow pairs is 200' (61 m).
  - C. Arrow pairs shall be evenly spaced if three (3) or more are required.
  - D. The spacing between Bi Directional Left Turn Arrows is 33' (10 m).

**GENERAL NOTES**

1. Refer to State Standard 780001 for additional Pavement Markings including letters & arrows.
2. See Plans for Pavement Markings adjacent to curbed islands and medians, and through lane reductions.
3. Refer to Article 780.13 for letter, number and symbol areas (sq. ft.)
4. Areas are grooved 1" beyond each edge for the following symbols:  
Through Arrow= 14.8 sq. ft.  
Large Left or Right Arrow= 21.9 sq. ft.  
2 Arrow Combination Left (or Right) and Through= 34.9 sq. ft.  
Wrong Way Arrow= 29.5 sq. ft.  
Railroad Crossing Symbol= 69.8 sq. ft.  
(For further information, refer to BDE Special Provision: Grooving for Recessed Pavement Markings)

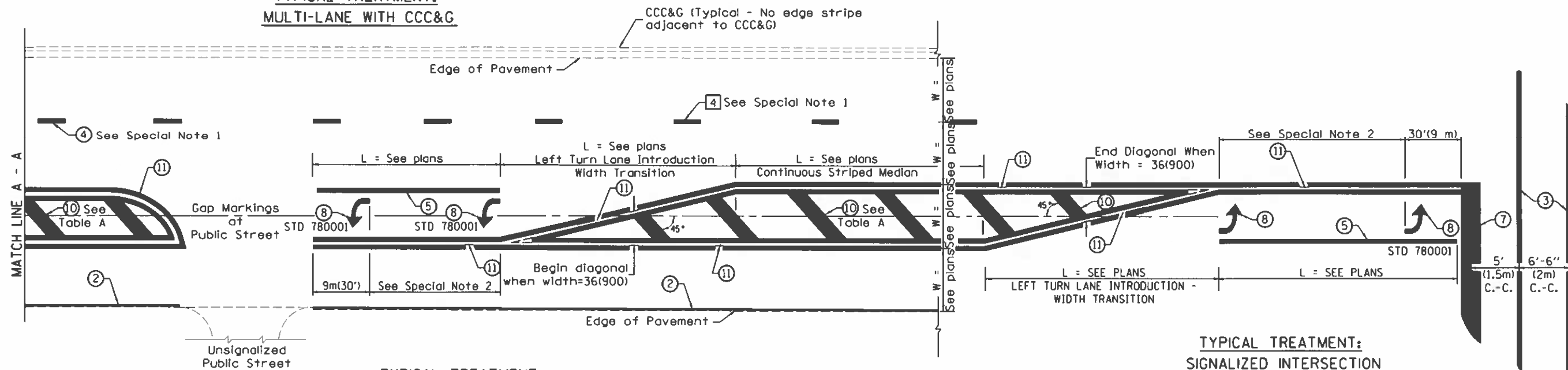
01-01-97	RENUM. F-8.03, NEW REVISION BOX	T.P.	10-16-06	REVISED TO 2007 SPEC.		<b>STATE OF ILLINOIS DEPARTMENT OF TRANSPORTATION</b>	<b>TYPICAL PAVEMENT MARKINGS</b>	F.A. RTE.	SECTION	COUNTY	TOTAL SHEETS	SHEET NO.
02-07-97	ADD BI DIRECTIONAL DIMENSION	J.A.	2/29/16	ADDED GROOVING AREAS	R.D.			669	(10)RS-8	PEORIA	48	47
10-97	CORRECT BI DIRECTIONAL DIMENSION	J.A.	07-16-19	SPELLING CORRECTIONS	R.D.							CONTRACT NO. 68M68
08-02	ADD CROSSWALK DIMS. WITH T.S.	M.A.										

NOT TO SCALE

SHT. 1 OF 2  
CADD STD. 780001-D4

FED. ROAD DIST. NO. [ILLINOIS] FED. AID PROJECT

**TYPICAL TREATMENT:  
MULTI-LANE WITH CCC&G**



**TYPICAL TREATMENT:  
2-LANE WITH SHOULDER**

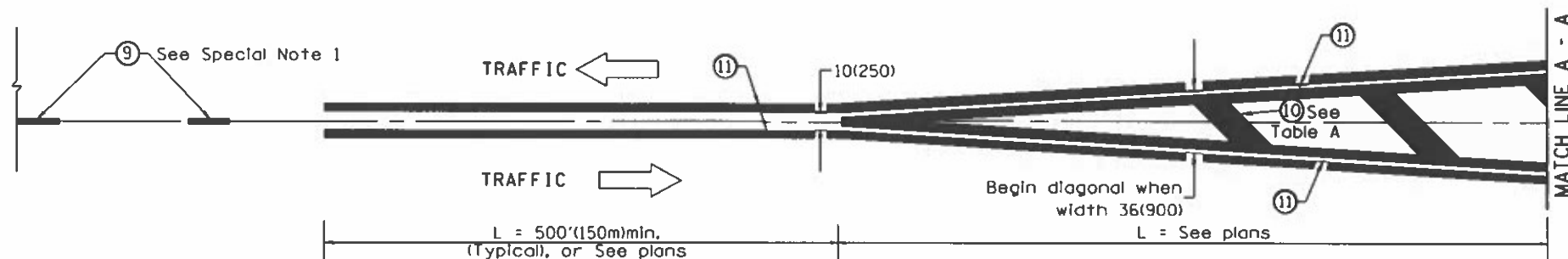
**TYPICAL MEDIAN TRANSITIONS**

**FLUSH PAVED MEDIAN: RESTRICTED LEFT TURN LANE**

**TABLE A**

**RECOMMENDED SPACING BETWEEN DIAGONAL LINES**

SPEED LIMIT RANGE	CONTINUOUS	INTERSECTION CHANNELIZATION
		(Includes Width Transitions for Median and Left Turn Lane Introductions)
Less Than 30 mph (50 km/h)	50' (15m)	15' (5m)
30 - 45 mph (50 - 70 km/h)	75' (23m)	20' (6m)
Over 45 mph (70 km/h)	150' (46m)	30' (9m)



**MEDIAN INTRODUCTION - WIDTH TRANSITIONS**

All dimensions are in inches (millimeters) unless otherwise noted.