

STATE OF ILLINOIS
DEPARTMENT OF TRANSPORTATION

F.A. RTE.	SECTION	COUNTY	TOTAL SHEETS	SHEET NO.
55	(32-2)RS,BRR	GRUNDY	39	1
		ILLINOIS	CONTRACT NO. 66K67	

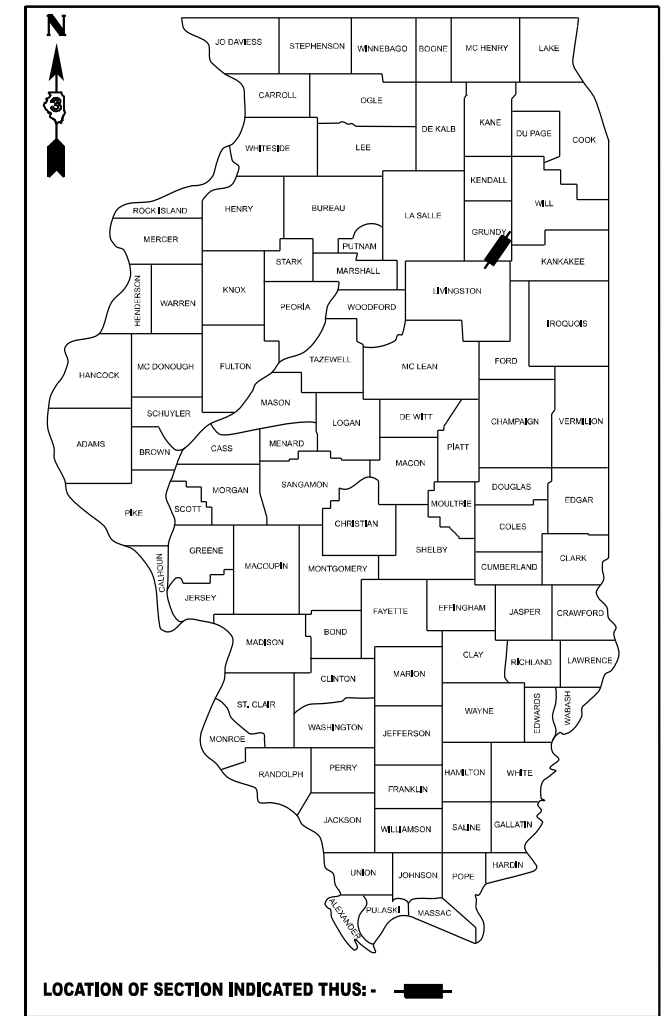
INDEX OF SHEET

- 1 COVER SHEET
- 2 GENERAL NOTES
- 3-9 SUMMARY OF QUANTITIES
- 10 TYPICAL SECTIONS
- 11-16 SCHEDULES
- 17 PROJECT LAYOUT
- 18-19 STAGING PLANS
- 20-21 ALTERNATE ROUTE SINGING
- 22-31 BRIDGE REPAIR PLANS
- 32-39 DETAILS

**PROPOSED
HIGHWAY PLANS**

**FAI ROUTE 55 (I-55)
SECTION (32-2)RS,BRR
PROJECT NHPP-5WZI(166)
RESURFACING, STRUCTURE PRESERVATION
GRUNDY COUNTY**

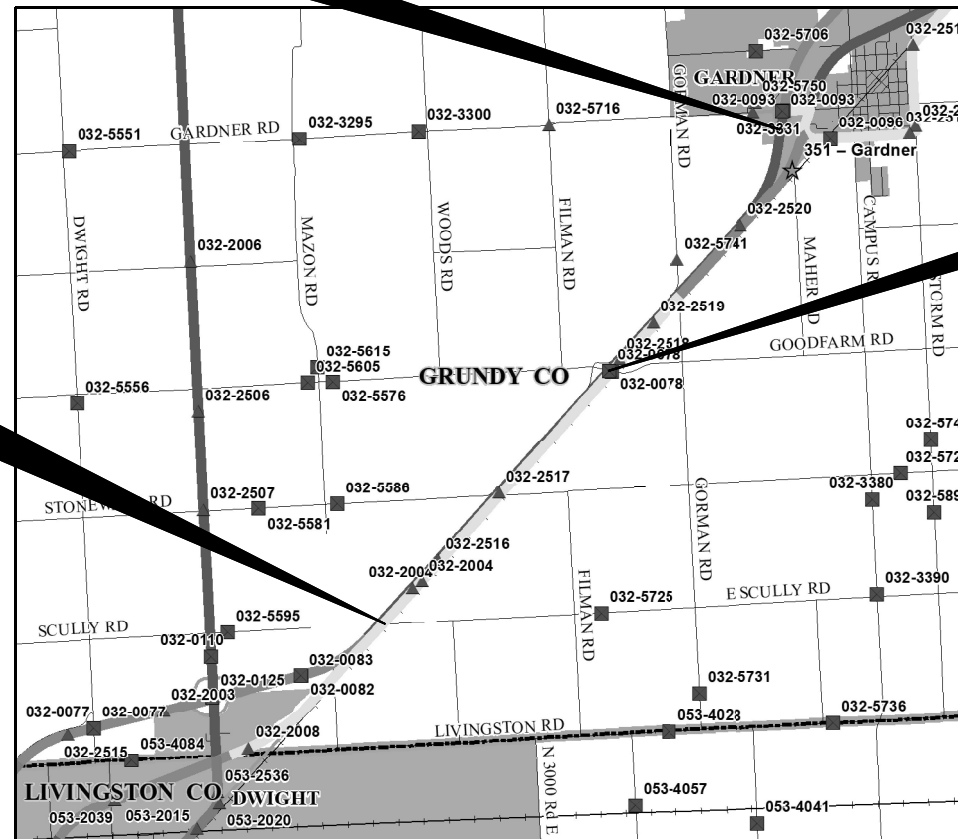
D-93-084-22



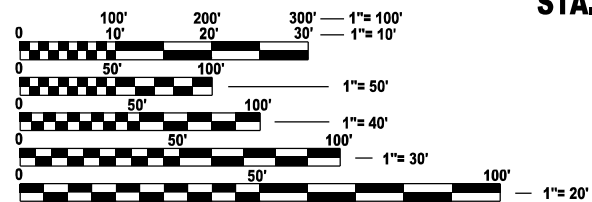
PROJECT ENDS
STA. 745+15 (NB)
STA. 749+82 (SB)

C-93-106-22

PROJECT BEGINS
STA. 460+00 (NB)
STA. 459+93 (SB)



**STRUCTURE
PRESERVATION**
SN 032-0078
STA. 626+00



FULL SIZE PLANS HAVE BEEN PREPARED USING STANDARD ENGINEERING SCALES. REDUCED SIZED PLANS WILL NOT CONFORM TO STANDARD SCALES. IN MAKING MEASUREMENTS ON REDUCED PLANS, THE ABOVE SCALES MAY BE USED.

J.U.L.I.E.
JOINT UTILITY LOCATION INFORMATION FOR EXCAVATION
1-800-892-0123
OR 811

PROJECT ENGINEER: JOSEPH KANNEL, P.E.
UNIT CHIEF: DARCY MITCHELL
DISTRICT 3 NO. (815) 434-6131
CONTRACT NO. 66K67

GROSS LENGTH = 28,649 FT. = 5.42 MILE
NET LENGTH = 28,649 FT. = 5.42 MILE

FUNCTION CLASSIFICATION
INTERSTATE
2021 ADT = 20,600
P.V. = 78.5% S.U. = 17.5% M.U. = 4.0%

STATE OF ILLINOIS
DEPARTMENT OF TRANSPORTATION

SUBMITTED November 02 20 23

Joseph Kannel REGIONAL ENGINEER
December 8, 2023

Steph M. Smith ENGINEER OF DESIGN AND ENVIRONMENT
December 8, 2023
DIRECTOR OF HIGHWAYS PROJECT IMPLEMENTATION

**PRINTED BY THE AUTHORITY
OF THE STATE OF ILLINOIS**

GENERAL NOTES

EXCEPT AS NOTED ON THE PLANS, PAVEMENT GRADES SHOWN ARE AT THE TOP OF PAVEMENT SURFACES.

BEFORE ORDERING PIPE CULVERTS OR PIPE DRAINS, THE CONTRACTOR SHALL CONSULT THE ENGINEER FOR EXACT LENGTHS.

THE ENGINEER WILL BE THE SOLE JUDGE CONCERNING CURING TIME FOR THE VARIOUS HMA LIFTS.

THE FINISHED EARTHWORK SHALL HAVE A VEGETATION SUSTAINING SOIL COVERING THE TOP FOUR INCHES (100 MILLIMETERS) IN AREAS TO BE SEEDED OR SODDED. THE VEGETATION SUSTAINING SOIL REQUIRED WILL NOT BE PAID FOR SEPARATELY BUT WILL BE INCLUDED IN THE COST OF FURNISHED EXCAVATION.

SHORT TERM PAVEMENT MARKING SHALL BE USED TO OUTLINE EXIT AND ENTRANCE RAMPS FOR THE PRIME COAT APPLICATION AND EACH RESURFACING LIFT.

ON EXISTING PAVEMENT WHICH MAY BE SUPERELEVATED, THE NEW HMA PAVEMENT SHALL BE BUILT WITH THE SAME SUPERELEVATION UNLESS NEW SUPERELEVATION RATES ARE GIVEN ON THE PLANS.

ALL ELEVATIONS REFERRING TO U.S.G.S. MEAN SEA LEVEL DATUM.

THE FOLLOWING RATES OF APPLICATION HAVE BEEN USED IN CALCULATING PLAN QUANTITIES:

GRANULAR MATERIALS	2.05	TONS / CU YD
HMA RESURFACING	112	LBS / SQ YD / IN
SHORT TERM PAVEMENT MARKING	10	FT /100 FT OF APPLICATION
MIX FOR CRACKS, JTS & FLGWYS	0.0003	TONS / SQ YD

ALL DAMAGE TO DEPARTMENT OWNED UNDERGROUND FACILITIES, CAUSED BY THE CONTRACTOR SHALL BE REPAIRED TO THE SATISFACTION OF THE ENGINEER AND AT NO EXPENSE TO THE DEPARTMENT. THIS SHALL INCLUDE ALL TEMPORARY REPAIRS REQUIRED TO KEEP THE FACILITY OPERATIONAL WHILE MATERIAL IS BEING OBTAINED TO MAKE PERMANENT REPAIRS. SPLICING OF ELECTRIC CABLE WILL NOT BE ALLOWED. ELECTRIC CABLE SHALL BE REPLACED FROM POLE TO POLE OR CONTROLLER.

MEMBERS OF JULIE KNOWN TO BE WITHIN THE LIMITS OF THE IMPROVEMENT ARE: AT&T, COMED, ENTERPRISE PRODUCTS, KINDER MORGAN, LUMEN TECHNOLOGY (LEVEL 3/CENTURYLINK), NICOR, PEMBINA-COCHIN, VILLAGE OF GARDNER, KRAUS CABLE TV, AND SPRINT.

NON-MEMBERS OF JULIE KNOWN TO BE WITHIN THE LIMITS OF THE IMPROVEMENT ARE:

LIST OF ILLINOIS DOT HIGHWAY STANDARDS

- 000001-08 STANDARD SYMBOLS, ABBREVIATIONS AND PATTERNS
- 001001-02 AREAS OF REINFORCEMENT BARS
- 001006 DECIMAL OF AN INCH AND OF A FOOT
- 280001-07 TEMPORARY EROSION CONTROL SYSTEMS
- 420001-10 PAVEMENT JOINTS
- 442001-04 CLASS A PATCHES
- 635001-02 DELINEATORS
- 637006-05 CONCRETE BARRIER, DOUBLE FACE, 42 in. HEIGHT
- 642001-03 SHOULDER RUMBLE STRIPS, 16 INCH
- 643001-02 SAND MODULE IMPACT ATTENUATORS
- 666001-01 RIGHT-OF-WAY MARKERS
- 701001-02 OFF-ROAD OPERATIONS 2L, 2W, MORE THAN 15' AWAY
- 701006-05 OFF-ROAD OPERATIONS 2L, 2W, 15' TO 24" FROM PAVEMENT EDGE
- 701011-04 OFF-ROAD MOVING OPERATIONS 2L, 2W, DAY ONLY
- 701101-05 OFF-ROAD OPERATIONS, MULTILANE, 15' TO 24" FROM PAVEMENT EDGE
- 701106-02 OFF-ROAD OPERATIONS, MULTILANE, MORE THAN 15' AWAY
- 701201-05 LANE CLOSURE, 2L, 2W, DAY ONLY, FOR SPEEDS ≥ 45 MPH
- 701301-04 LANE CLOSURE, 2L, 2W, SHORT TIME OPERATIONS
- 701306-04 LANE CLOSURE, 2L, 2W, SLOW MOVING OPERATIONS DAY ONLY, FOR SPEEDS ≥ 45 MPH
- 701311-03 LANE CLOSURE, 2L, 2W, MOVING OPERATIONS - DAY ONLY
- 701316-13 LANE CLOSURE, 2L, 2W, BRIDGE REPAIR, FOR SPEEDS ≥ 45 MPH
- 701321-18 LANE CLOSURE, 2L, 2W, BRIDGE REPAIR WITH BARRIER
- 701400-12 APPROACH TO LANE CLOSURE, FREEWAY/EXPRESSWAY
- 701401-13 LANE CLOSURE, FREEWAY/EXPRESSWAY
- 701402-12 LANE CLOSURE, FREEWAY/EXPRESSWAY, WITH BARRIER
- 701406-13 LANE CLOSURE, FREEWAY/EXPRESSWAY, DAY OPERATIONS ONLY
- 701411-09 LANE CLOSURE, MULTILANE, AT ENTRANCE OR EXIT RAMP FOR SPEEDS ≥ 45 MPH
- 701426-09 LANE CLOSURE, MULTILANE INTERMITTENT OR MOVING OPERATION, FOR SPEEDS ≥ 45 MPH
- 701428-01 TRAFFIC CONTROL, SETUP AND REMOVAL, FREEWAY/EXPRESSWAY
- 701451-05 RAMP CLOSURE FREEWAY/EXPRESSWAY
- 701456-05 PARTIAL EXIT RAMP CLOSURE FREEWAY/EXPRESSWAY
- 701901-09 TRAFFIC CONTROL DEVICES
- 704001-08 TEMPORARY CONCRETE BARRIER
- 780001-05 TYPICAL PAVEMENT MARKINGS
- 781001-04 TYPICAL APPLICATIONS RAISED REFLECTIVE PAVEMENT MARKERS

COMMITMENTS:

NONE

STATE OF ILLINOIS
DEPARTMENT OF TRANSPORTATION
DISTRICT THREE
AS BUILT INFORMATION

SUPERVISING CONSTRUCTION FIELD ENGINEER

RESIDENT ENGINEER / TECHNICIAN

START & END DATES
OF CONSTRUCTION:

INSPECTORS:

MODEL: GENERAL (Sheet)
FILE NAME: P:\MIDOT\Documents\IDOT\Office\District 3\ORD Project\036667\CADD\Info\036667-COVER SHEET

USER NAME = brandon.cris	DESIGNED - ____	REVISED - ____
	DRAWN - ____	REVISED - ____
PLOT SCALE = 0.16666633' / in.	CHECKED - ____	REVISED - ____
PLOT DATE = 11/2/2023	DATE - ____	REVISED - ____

**STATE OF ILLINOIS
DEPARTMENT OF TRANSPORTATION**

GENERAL NOTES

SCALE: 1"=50' SHEET 1 OF 1 SHEETS STA. ___+___ TO STA. ___+___

F.A.I RTE.	SECTION	COUNTY	TOTAL SHEETS	SHEET NO.
55	(32-2)RS,BRR	GRUNDY	39	2
CONTRACT NO. 66K67				
ILLINOIS FED. AID PROJECT				

MODEL: S00 SHEET 1 (Sheet)
 FILE NAME: P:\MSDCAD\Drawings\DOT\Office\District 3\ORD Project\036667\CADD\036667\036667 S00

CODE NO.	ITEM	UNIT	TOTAL QUANTITY	CONSTRUCTION CODE	
				90% FED 10% STATE	90% FED 10% STATE
				ROADWAY	BRIDGE
				0005	0047
				RURAL	S.N. 032-0078
20400800	FURNISHED EXCAVATION	CU YD	30	30	
21400100	GRADING AND SHAPING DITCHES	FOOT	3050	3050	
25000210	SEEDING, CLASS 2A	ACRE	0.5	0.5	
25000400	NITROGEN FERTILIZER NUTRIENT	POUND	39	39	
25000500	PHOSPHORUS FERTILIZER NUTRIENT	POUND	39	39	
25000600	POTASSIUM FERTILIZER NUTRIENT	POUND	39	39	
25100630	EROSION CONTROL BLANKET	SQ YD	2078	2078	
28100107	STONE RIPRAP, CLASS A4	SQ YD	126		126
28100707	STONE DUMPED RIPRAP, CLASS A4	SQ YD	39	39	
28200200	FILTER FABRIC	SQ YD	165	39	126
40600290	BITUMINOUS MATERIALS (TACK COAT)	POUND	133334	133334	
40600370	LONGITUDINAL JOINT SEALANT	FOOT	58083	58083	
40600400	MIXTURE FOR CRACKS, JOINTS, AND FLANGEWAYS	TON	76	76	
40603200	POLYMERIZED HOT-MIX ASPHALT BINDER COURSE, IL-4.75, N50	TON	8609	8609	

USER NAME = brandon.cofis	DESIGNED - _____	REVISED - _____
DRAWN - _____	REVISIONS - _____	
PLOT SCALE = 0.16666633' / in.	CHECKED - _____	REVISED - _____
PLOT DATE = 11/2/2023	DATE - _____	REVISED - _____

**STATE OF ILLINOIS
DEPARTMENT OF TRANSPORTATION**

SUMMARY OF QUANTITIES

SCALE: SHEET 1 OF 7 SHEETS STA. ___+___ TO STA. ___+___

F.A.I. RTE.	SECTION	COUNTY	TOTAL SHEETS	SHEET NO.
55	(32-2)RS,BRR	GRUNDY	39	3
CONTRACT NO. 66K67				
ILLINOIS FED. AID PROJECT				

MODEL: S00 SHEET 2 (Sheet)
 FILE NAME: P:\MSDCAD\Drawings\DOT Office\District 3\ORD Project\38667\CADD\38667.DWG

CODE NO.	ITEM	UNIT	TOTAL QUANTITY	CONSTRUCTION CODE	
				90% FED 10% STATE	90% FED 10% STATE
				ROADWAY	BRIDGE
				0005	0047
				RURAL	S.N. 032-0078
40603235	POLYMERIZED HOT-MIX ASPHALT BINDER COURSE, IL-19.0, N70	TON	19681	19681	
40604162	POLYMERIZED HOT-MIX ASPHALT SURFACE COURSE, IL-9.5, MIX "D", N70	TON	10941	10941	
40605015	POLYMERIZED HOT-MIX ASPHALT BINDER COURSE, STONE MATRIX ASPHALT 12.5, N80	TON	17266	17266	
40605034	POLYMERIZED HOT-MIX ASPHALT SURFACE COURSE, STONE MATRIX ASPHALT, 12.5, MIX "E", N80	TON	17247	17247	
44000157	HOT-MIX ASPHALT SURFACE REMOVAL, 2"	SQ YD	75613	75613	
44000169	HOT-MIX ASPHALT SURFACE REMOVAL, 5"	SQ YD	153728	153728	
44000182	HOT-MIX ASPHALT SURFACE REMOVAL, 8"	SQ YD	76038	76038	
44200553	CLASS A PATCHES, TYPE II, 10 INCH	SQ YD	1169	1169	
44200557	CLASS A PATCHES, TYPE III, 10 INCH	SQ YD	48	48	
44200559	CLASS A PATCHES, TYPE IV, 10 INCH	SQ YD	33	33	
44200624	CLASS A PATCHES, TYPE III, 14 INCH	SQ YD	16	16	
44213000	PATCHING REINFORCEMENT	SQ YD	1250	1250	
44213200	SAWCUTS	FOOT	5330	5330	
44213204	TIE BARS 3/4"	EACH	6018	6018	

USER NAME = brandon.crisis	DESIGNED - _____	REVISED - _____
DRAWN - _____	REVISIONS - _____	
PLOT SCALE = 0.16666633' / in.	CHECKED - _____	REVISED - _____
PLOT DATE = 11/2/2023	DATE - _____	REVISED - _____

**STATE OF ILLINOIS
DEPARTMENT OF TRANSPORTATION**

SUMMARY OF QUANTITIES

SCALE: SHEET 2 OF 7 SHEETS STA. ___+___ TO STA. ___+___

F.A.I. RTE.	SECTION	COUNTY	TOTAL SHEETS	SHEET NO.
55	(32-2)RS,BRR	GRUNDY	39	4
CONTRACT NO. 66K67				
ILLINOIS FED. AID PROJECT				

MODEL: SOO SHEET 4 (Sheet)
 FILE NAME: P:\MIDOT\Documents\DOT Office\District 3\ORD Project\036667\CADD\Info\CAD\Sheet\036667 SOO

CODE NO.	ITEM	UNIT	TOTAL QUANTITY	CONSTRUCTION CODE	
				90% FED 10% STATE	90% FED 10% STATE
				ROADWAY	BRIDGE
				0005	0047
				RURAL	S.N. 032-0078
59300100	CONTROLLED LOW-STRENGTH MATERIAL	CU YD	4		4
60202215	CATCH BASINS, TYPE A, 4'-DIAMETER, WITH MEDIAN INLET (604101)	EACH	1	1	
60905305	BOX CULVERTS TO BE CLEANED	FOOT	40	40	
60920024	PIPE CULVERTS TO BE CLEANED 24"	FOOT	66	66	
63500105	DELINEATORS	EACH	184	184	
64200116	SHOULDER RUMBLE STRIPS, 16 INCH	FOOT	115006	115006	
64300450	IMPACT ATTENUATORS (NON-REDIRECTIVE), TEST LEVEL 3	EACH	3	3	
* 66900200	NON-SPECIAL WASTE DISPOSAL	CU YD	344	344	
* 66900530	SOIL DISPOSAL ANALYSIS	EACH	2	2	
* 66901001	REGULATED SUBSTANCES PRE-CONSTRUCTION PLAN	L SUM	1	1	
* 66901003	REGULATED SUBSTANCES FINAL CONSTRUCTION REPORT	L SUM	1	1	
* 66901006	REGULATED SUBSTANCES MONITORING	CAL DA	5	5	
67000400	ENGINEER'S FIELD OFFICE, TYPE A	CAL MO	12	12	
67100100	MOBILIZATION	L SUM	1	1	

* = SPECIALTY ITEM

USER NAME = brandon.cofis	DESIGNED - _____	REVISED - _____
DRAWN - _____	REVISIONS - _____	
PLOT SCALE = 0.16666633' / in.	CHECKED - _____	REVISED - _____
PLOT DATE = 11/2/2023	DATE - _____	REVISED - _____

**STATE OF ILLINOIS
DEPARTMENT OF TRANSPORTATION**

SUMMARY OF QUANTITIES

SCALE: SHEET 4 OF 7 SHEETS STA. ___+___ TO STA. ___+___

F.A.I RTE.	SECTION	COUNTY	TOTAL SHEETS	SHEET NO.
55	(32-2)RS,BRR	GRUNDY	39	6
			CONTRACT NO. 66K67	
ILLINOIS FED. AID PROJECT				

MODEL: SOO SHEET 6 (Sheet)
 FILE NAME: P:\MIDOT\Documents\DOT Office\District 3\ORD Project\036667\CADD\Info\CAD\Sheet\036667 SOO

CODE NO.	ITEM	UNIT	TOTAL QUANTITY	CONSTRUCTION CODE	
				90% FED 10% STATE	90% FED 10% STATE
				ROADWAY	BRIDGE
				0005	0047
				RURAL	S.N. 032-0078
* 72800100	TELESCOPING STEEL SIGN SUPPORT	FOOT	150	150	
* 78004640	PREFORMED PLASTIC PAVEMENT MARKING, TYPE D - STANDARD - LINE 8"	FOOT	14380	14380	
* 78005110	EPOXY PAVEMENT MARKING - LINE 4"	FOOT	460024	460024	
* 78011025	GROOVING FOR RECESSED PAVEMENT MARKING 5"	FOOT	115006	115006	
* 78011045	GROOVING FOR RECESSED PAVEMENT MARKING 9"	FOOT	14680	14680	
* 78100100	RAISED REFLECTIVE PAVEMENT MARKER	EACH	1438	1438	
78300200	RAISED REFLECTIVE PAVEMENT MARKER REMOVAL	EACH	1438	1438	
78300202	PAVEMENT MARKING REMOVAL - WATER BLASTING	SQ FT	37952	37952	
X0326208	ALTERNATE ROUTE SIGNING	L SUM	1	1	
* X0328004	REAL-TIME TRAFFIC CONTROL SENSOR UNIT	WEEK	70	70	
X5427601	REMOVE AND RELAY END SECTIONS	EACH	3	3	
X6350120	DELINEATOR REMOVAL	EACH	144	144	
X6350204	LINEAR DELINEATOR PANELS, 4 INCH	EACH	24	24	
X6350206	LINEAR DELINEATOR PANELS, 6 INCH	EACH	18	18	

*= SPECIALTY ITEM

USER NAME = brandon.cofis	DESIGNED - _____	REVISED - _____
DRAWN - _____	REVISIONS - _____	
PLOT SCALE = 0.16666633' / in.	CHECKED - _____	REVISED - _____
PLOT DATE = 11/2/2023	DATE - _____	REVISED - _____

**STATE OF ILLINOIS
DEPARTMENT OF TRANSPORTATION**

SUMMARY OF QUANTITIES

SCALE: SHEET 6 OF 7 SHEETS STA. ___+___ TO STA. ___+___

F.A.I. RTE.	SECTION	COUNTY	TOTAL SHEETS	SHEET NO.
55	(32-2)RS,BRR	GRUNDY	39	8
			CONTRACT NO. 66K67	
ILLINOIS FED. AID PROJECT				

CODE NO.	ITEM	UNIT	TOTAL QUANTITY	CONSTRUCTION CODE	
				90% FED 10% STATE	90% FED 10% STATE
				ROADWAY	BRIDGE
				0005	0047
				RURAL	S.N. 032-0078
X6430120	REMOVE IMPACT ATTENUATORS, NO SALVAGE	EACH	3	3	
X7010239	CHANGEABLE MESSAGE SIGN (SPECIAL)	CAL WK	560	560	
* X7260100	MILE POST MARKER ASSEMBLY (SPECIAL)	EACH	10	10	
* X8570002	SMART TRAFFIC MONITORING SYSTEM	CAL WK	70	70	
* X8570004	SMART TRAFFIC MONITORING DEVICE	CAL WK	350	350	
Z0004556	HOT-MIX ASPHALT SURFACE REMOVAL (DECK)	SQ YD	1549		1549
Z0006016	BRIDGE DECK LATEX CONCRETE OVERLAY, 2 3/4 INCHES	SQ YD	1549		1549
Z0012130	BRIDGE DECK SCARIFICATION 3/4"	SQ YD	1549		1549
Z0012754	STRUCTURAL REPAIR OF CONCRETE (DEPTH EQUAL TO OR LESS THAN 5 INCHES)	SQ FT	13		13
Z0016001	DECK SLAB REPAIR (FULL DEPTH, TYPE I)	SQ YD	7		7
Z0016002	DECK SLAB REPAIR (FULL DEPTH, TYPE II)	SQ YD	2		2
Z0018300	DRAINAGE STRUCTURE REPAIR	EACH	4	4	
Z0021908	SILICONE JOINT SEALER, 2"	FOOT	64		64
Z0030850	TEMPORARY INFORMATION SIGNING	SQ FT	84	84	
Ø Z0076600	TRAINEES	HOUR	2,000	2,000	
Z0034105	MATERIAL TRANSFER DEVICE	TON	43045	43045	
Ø Z0076604	TRAINEES - TRAINING PROGRAM GRADUATE	HOUR	2,000	2,000	
Z0048665	RAILROAD PROTECTIVE LIABILITY INSURANCE	L SUM	1	1	

Ø 0042 *= SPECIALTY ITEM

MODEL: SOQ SHEET 7 (Sheet)
FILE NAME: c:\p\work\brandon.criess@illinois.gov\0854423\036667 SOQ.dgn

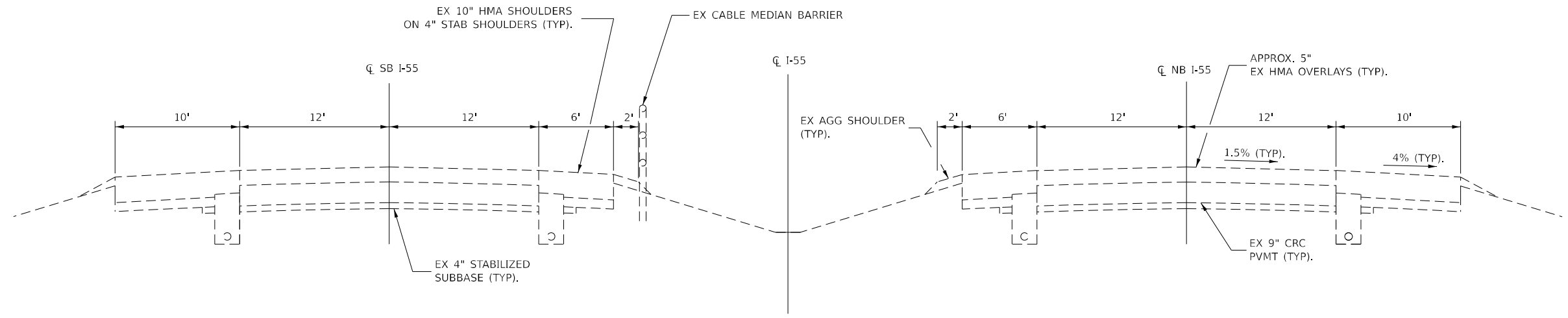
USER NAME = brandon.criess	DESIGNED - _____	REVISED - _____
PLOT SCALE = 0.16666633' / in.	DRAWN - _____	REVISED - _____
PLOT DATE = 11/2/2023	CHECKED - _____	REVISED - _____
	DATE - _____	REVISED - _____

**STATE OF ILLINOIS
DEPARTMENT OF TRANSPORTATION**

SUMMARY OF QUANTITIES

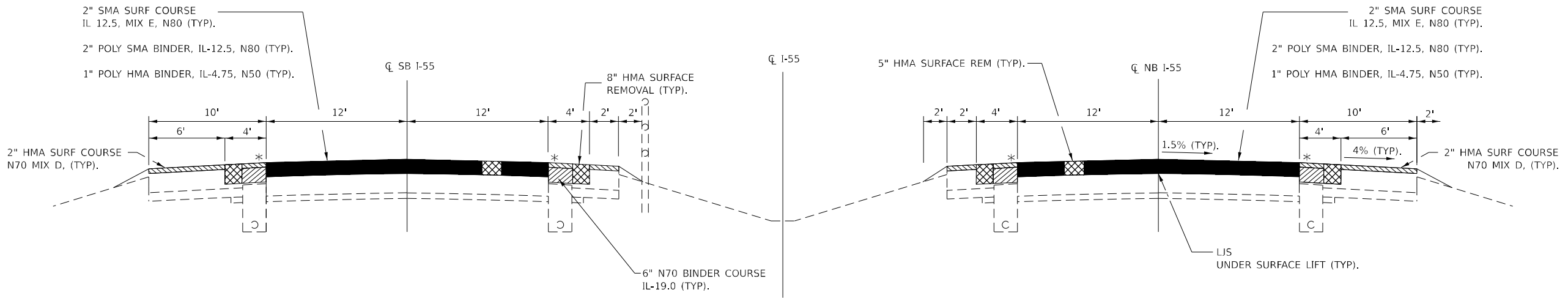
SCALE: SHEET 7 OF 7 SHEETS STA. ___+___ TO STA. ___+___

F.A.I RTE.	SECTION	COUNTY	TOTAL SHEETS	SHEET NO.
55	(32-2)RS,BRR	GRUNDY	39	9
CONTRACT NO. 66K67				
ILLINOIS FED. AID PROJECT				



EXISTING TYPICAL SECTION

STA. 460+00 TO STA. 745+14 (N.B.)
STA. 459+93 TO STA. 749+82 (S.B.)



PROPOSED TYPICAL SECTION

STA. 460+00 TO STA. 745+14 (N.B.)
STA. 459+93 TO STA. 749+82 (S.B.)

ON SUPERELEVATED ROADWAYS THE RESURFACING SHALL MATCH THE EXISTING PAVEMENT WITH A MAXIMUM 8% ROLLOVER BETWEEN EDGE OF PAVEMENT AND SHOULDER

HMA SURFACE REMOVAL IS INTENDED TO REMOVE ALL EXISTING HMA.

* 16" RUMBLE STRIP (TYP.)

HMA MIXTURE REQUIREMENT TABLE

LOCATIONS:	ENTIRE PROJECT	ENTIRE PROJECT	ENTIRE PROJECT	ENTIRE PROJECT	ENTIRE PROJECT	ENTIRE PROJECT
MIXTURE USE(S):	HMA	SMA	SMA	HMA SHOULDERS	6' HMA INNER SHOULDER TOP LIFT	10' HMA OUTER SHOULDER TOP LIFT
BINDER GRADE (PG):	BINDER	BINDER	SURFACE	BOTTOM LIFT(S)		
DESIGN AIR VOIDS:	SBS PG 76-28	SBS PG 76-28	SBS PG 76-28	SBS PG 70-28	SBS PG 70-28	SBS PG 70-28
MIXTURE COMPOSITION:	4.0% @ N50	4.0% @ N80	4.0% @ N80	4.0% @ N70	4.0% @ N70	4.0% @ N70
(MIXTURE GRADATION)	IL 4.75	IL 12.5	IL 12.5	IL 19.0	IL 9.5	IL 9.5
FRICITION AGGREGATE:			MIXTURE E		MIXTURE D	MIXTURE D
MIXTURE WEIGHT:	112.0 LB/SY/IN	112.0 LB/SY/IN	112.0 LB/SY/IN	112.0 LB/SY/IN	112.0 LB/SY/IN	112.0 LB/SY/IN
QUALITY MANAGEMENT PROGRAM:	PPF	PPF	PPF	QCQA	QCQA	QCP
SUBLOT SIZE:	1000 TONS	1000 TONS	1000 TONS	N/A	N/A	1000 TONS
DENSITY TEST METHOD:	CORES	CORES	CORES	CORES/NUCLEAR	CORES/NUCLEAR	CORES
MATERIAL TRANSFER DEVICE (REQUIRED):	YES	YES	YES	NO	YES	YES

MODEL: TYPICAL (Sheet) FILE NAME: P:\MIDOT\Documents\DOT Office\District 3\ORD Project\036667\CADD\036667 TYPICAL SECTIONS.dgn

USER NAME = brandon.crisis	DESIGNED - _____	REVISED - _____
	DRAWN - _____	REVISED - _____
PLOT SCALE = 0.16666633' / in.	CHECKED - _____	REVISED - _____
PLOT DATE = 11/2/2023	DATE - _____	REVISED - _____

**STATE OF ILLINOIS
DEPARTMENT OF TRANSPORTATION**

TYPICAL SECTIONS

SCALE: SHEET 1 OF 1 SHEETS STA. ___+___ TO STA. ___+___

F.A.I RTE.	SECTION	COUNTY	TOTAL SHEETS	SHEET NO.
55	(32-2)RS,BRR	GRUNDY	39	10
CONTRACT NO. 66K67				
ILLINOIS FED. AID PROJECT				

I-55 MAINLINE PATCHING SCHEDULE																
SOUTHBOUND LANES (1/2)																
LOG MILE	PASSING LANE								DRIVING LANE							
	PATCH LENGTH	PATCH WIDTH	AREA	CLASS A PATCHING		PATCH REINF.	SAW CUTS	TIE BARS 3/4"	PATCH LENGTH	PATCH WIDTH	AREA	CLASS A PATCHING		PATCH REINF.	SAW CUTS	TIE BARS 3/4"
				TY II 10"	TY IV 10"							TY II 10"	TY III 10"			
(LM)	FOOT	FOOT	SQ YD	SQ YD	SQ YD	SQ YD	FOOT	EACH	FOOT	FOOT	SQ YD	SQ YD	SQ YD	FOOT	EACH	
0.0	10	12	13.4	13.4		13.4	44	42	10	12	13.4	13.4		13.4	44	42
0.3									6	12	8	8		8	36	42
0.4									6	12	8	8		8	36	42
0.5	6	12	8	8		8	36	42	6	12	8	8		8	36	42
0.7									6	12	8	8		8	36	42
0.7									6	12	8	8		8	36	42
0.7									6	12	8	8		8	36	42
0.8									6	12	8	8		8	36	42
0.8									6	12	8	8		8	36	42
0.8									6	12	8	8		8	36	42
0.9	6	12	8	8		8	36	42	6	12	8	8		8	36	42
1.0									6	12	8	8		8	36	42
1.0	6	12	8	8		8	36	42	10	12	13.4	13.4		13.4	44	42
1.0									6	12	8	8		8	36	42
1.0									6	12	8	8		8	36	42
1.0									6	12	8	8		8	36	42
1.0									6	12	8	8		8	36	42
1.1	6	12	8	8		8	36	42								
1.1									6	12	8	8		8	36	42
1.2	10	12	13.4	13.4		13.4	44	42	6	12	8	8		8	36	42
1.4									8	12	10.7	10.7		10.7	40	42
1.4									8	12	10.7	10.7		10.7	40	42
1.5									6	12	8	8		8	36	42
1.5									6	12	8	8		8	36	42
1.6									6	12	8	8		8	36	42
1.6									6	12	8	8		8	36	42
1.6									12	12	16		16	16	48	42
1.7									6	12	8	8		8	36	42
1.7									6	12	8	8		8	36	42
1.7	6	12	8	8		8	36	42	6	12	8	8		8	36	42
1.8									6	12	8	8		8	36	42
1.8									6	12	8	8		8	36	42
1.9									6	12	8	8		8	36	42
2.0									6	12	8	8		8	36	42
2.0									6	12	8	8		8	36	42
2.1									6	12	8	8		8	36	42
2.1									6	12	8	8		8	36	42
2.1									6	12	8	8		8	36	42
2.2									6	12	0	0		0	36	42
2.2									6	12	8	8		8	36	42
2.2									6	12	8	8		8	36	42
--	SUBTOTALS		67	67	0	67	268	294			344	328	16	344	1476	1680

*FOR SOUTHBOUND LM 0.0 IS STA 749+82. MILES INCREASING TO THE SOUTH.
 NOTE: ALL 10 INCH PACHES SHALL BE DONE AFTER THE FIRST LEVEL OF BINDER HAS BEEN APPLIED

MODEL: SCHEDULE 3 [Sheet]
 FILE NAME: P:\Bids\2023\13090 - Project\036667\CADD\Drawings\DOT\Office\Sheet\036667 - SCHEDULES

USER NAME = brandon.cris	DESIGNED - _____	REVISED - _____
	DRAWN - _____	REVISED - _____
PLOT SCALE = 0.16666633' / in.	CHECKED - _____	REVISED - _____
PLOT DATE = 11/2/2023	DATE - _____	REVISED - _____

**STATE OF ILLINOIS
DEPARTMENT OF TRANSPORTATION**

SCHEDULES

SCALE: SHEET 3 OF 6 SHEETS STA. ___+___ TO STA. ___+___

F.A.I RTE.	SECTION	COUNTY	TOTAL SHEETS	SHEET NO.
55	(32-2)RS,BRR	GRUNDY	39	13
CONTRACT NO. 66K67				
ILLINOIS FED. AID PROJECT				

I-55 MAINLINE PATCHING SCHEDULE																
SOUTHBOUND LANES (2/2)																
LOG MILE	PASSING LANE								DRIVING LANE							
	PATCH LENGTH	PATCH WIDTH	AREA	CLASS A PATCHING		PATCH REINF.	SAW CUTS	TIE BARS 3/4"	PATCH LENGTH	PATCH WIDTH	AREA	CLASS A PATCHING		PATCH REINF.	SAW CUTS	TIE BARS 3/4"
				TY II 10"	TY IV 10"							TY II 10"	TY III 10"			
(LM)	FOOT	FOOT	SQ YD	SQ YD	SQ YD	SQ YD	FOOT	EACH	FOOT	FOOT	SQ YD	SQ YD	SQ YD	SQ YD	FOOT	EACH
2.2									6	12	8	8		8	36	42
2.2									6	12	8	8		8	36	42
2.2									6	12	8	8		8	36	42
2.2									6	12	8	8		8	36	42
2.2									6	12	8	8		8	36	42
2.2									6	12	8	8		8	36	42
2.3									10	12	13.4	13.4		13.4	44	42
2.4									6	12	8	8		8	36	42
2.4									6	12	8	8		8	36	42
2.5									6	12	8	8		8	36	42
2.6									6	12	8	8		8	36	42
2.6	6	12	8	8		8	36	42								
2.7									6	12	8	8		8	36	42
2.8	6	12	8	8		8	36	42	6	12	8	8		8	36	42
2.9									6	12	8	8		8	36	42
3.2	6	12	8	8		8	36	42	6	12	8	8		8	36	42
3.3									6	12	8	8		8	36	42
3.3									6	12	8	8		8	36	42
3.4									6	12	8	8		8	36	42
3.8									6	12	8	8		8	36	42
4.0									6	12	8	8		8	36	42
4.0									6	12	8	8		8	36	42
4.1									6	12	8	8		8	36	42
4.2									6	12	8	8		8	36	42
4.2									6	12	8	8		8	36	42
4.3									6	12	8	8		8	36	42
4.4	25	12	33.4		33.4	33.4	74	54								
4.4									6	12	8	8		8	36	42
4.6									10	12	13.4	13.4		13.4	44	42
4.7									6	12	8	8		8	36	42
4.7	6	12	8	8		8	36	42								
4.7									6	12	8	8		8	36	42
4.8									6	12	8	8		8	36	42
4.8									6	12	8	8		8	36	42
5.0									6	12	8	8		8	36	42
5.0									6	12	8	8		8	36	42
5.2									6	12	8	8		8	36	42
5.2									6	12	8	8		8	36	42
5.2									6	12	8	8		8	36	42
5.3									6	12	8	8		8	36	42
--	SUBTOTALS		65	32	33	65	218	222	--	--	307	307		307	1348	1554
--	SOUTHBOUND TOTALS		132	99	33	132	486	516	--	--	651	635	16	651	2824	3234

*FOR SOUTHBOUND LM 0.0 IS STA 749+82. MILES INCREASING TO THE SOUTH.
 NOTE: ALL 10 INCH PACHES SHALL BE DONE AFTER THE FIRST LEVEL OF BINDER HAS BEEN APPLIED

MODEL: SCHEDULE 4 (Sheet) FILE NAME: P:\Bids\2023\11\2\2023\DOT\Office\District 3\ORD Project\03666833\CAD\Drawings\03666833-SCHEDULES

USER NAME = brandon.cofis	DESIGNED - _____	REVISED - _____
PLOT SCALE = 0.16666833' / in.	DRAWN - _____	REVISED - _____
PLOT DATE = 11/2/2023	CHECKED - _____	REVISED - _____
	DATE - _____	REVISED - _____

**STATE OF ILLINOIS
DEPARTMENT OF TRANSPORTATION**

SCHEDULES			
SCALE:	SHEET 4	OF 6	SHEETS
	STA. ___+___	TO STA. ___+___	

F.A.I RTE.	SECTION	COUNTY	TOTAL SHEETS	SHEET NO.
55	(32-2)RS,BRR	GRUNDY	39	14
CONTRACT NO. 66K67				
ILLINOIS FED. AID PROJECT				

ROADSIDE HAZARDS DELINEATOR SCHEDULE						
STRUCTURE NUMBER	SIDE	STRUCTURE CENTERLINE STATION	SINGLE FACE EACH	DOUBLE FACE EACH	NO REFLECTOR N/A	TOTAL DELINEATORS EACH
4440	SB	480+00	1			1
032-2004	SB	500+76	1			1
032-2516	NB/SB	517+54		1		3
4443	NB/SB	535+00	2	1		3
4444	NB/SB	546+00	2	1		3
032-2517	NB/SB	555+50			N/A	0
4446	ETO	575+90		2		
4447	NB/SB	576+00	2	1		3
4448	NB/SB	600+00	2	1		3
4449	NB/SB	619+00	2	1		3
032-0078	NB/SB	626+00			N/A	0
032-2518	NB/SB	632+94	2	1		3
4456	NB/SB	640+00	2	1		3
032-2519	NB/SB	655+79			N/A	0
032-2611	NB/SB	672+40			N/A	0
4460	NB/SB	687+00	2	1		3
4461	ETO	704+00		2		2
032-2520	SB	713+62	1			1
4462	MEDIAN	714+00		1		
4463	NB/SB	724+00	2	1		3
4464	NB/SB	742+47	2	1		3
TOTAL						40

LINEAR DELINEATOR PANEL SCHEDULE						
STRUCTURE NUMBER	SIDE	STRUCTURE CENTERLINE STATION	GUARDRAIL LENGTH FT	PARAPET LENGTH FT	LINEAR DELINEATOR PANELS, 4" EACH	LINEAR DELINEATOR PANELS, 6" EACH
032-0078	NORTH	42+51.94	828	531.5	12	9
032-0078	SOUTH	42+51.94	834	531.5	12	9
TOTAL			1662	1063	24	18

MILE MARKER SCHEDULE				
MILE	SIDE	MILE POST MARKER ASSY SPECIAL EACH	TELESCOPING STEEL SIGN SUPPORT FOOT	REM SIGN PANEL ASSY TY A EACH
MM 223	NB/SB	2	30	2
MM 224	NB/SB	2	30	2
MM 225	NB/SB	2	30	2
MM 226	NB/SB	2	30	2
TOTAL		10	150	10

*NOTE: REMOVED SIGNS SHALL BE DELIVERED TO THE GARDNER IDOT MAINTENANCE FACILITY.

GRADING AND SHAPING DITCHES SCHEDULE													
STATION	LOCATION	LENGTH	WIDTH	DEPTH	DIRECTION OF FLOW	FURNISHED EXCAVATION	GRADING AND SHAPING DITCHES	SEEDING CL 2A	NITRO FERT NUT	PHOSP FERT NUT	POT FERT NUT	EROSION CONTROL BLANKET	
													STA. TO STA.
465+20	466+20	LT	100	6	1	SOUTH	100	0.014	1	1	1	67	
480+00	481+00	LT	100	6	1	NORTH	100	0.014	1	1	1	67	
514+50	517+50	LT	300	6	1	SOUTH	300	0.041	4	4	4	200	
534+00	535+00	LT	100	6	1	SOUTH	100	0.014	1	1	1	67	
545+00	546+50	LT	150	6	1	NORTH	150	0.021	2	2	2	100	
576+00	578+00	LT	200	6	1	NORTH	200	0.028	2	2	2	133	
599+80	602+30	LT	250	6	1	NORTH	250	0.034	3	3	3	167	
618+70	620+70	LT	200	6	1	NORTH	200	0.028	2	2	2	133	
626+00	628+00	LT	200	6	1	NORTH	200	0.028	2	2	2	133	
626+00	629+00	*MED	300	6	1	NORTH	300	0.041	4	4	4	200	
633+00	635+50	LT	250	6	1	NORTH	250	0.034	3	3	3	167	
640+00	642+00	LT	200	6	1	NORTH	200	0.028	2	2	2	133	
672+00	674+00	LT	200	6	1	NORTH	200	0.028	2	2	2	133	
687+00	688+00	LT	100	6	1	NORTH	100	0.014	1	1	1	67	
704+00	706+00	LI	200	6	1	NORTH	200	0.028	2	2	2	133	
742+00	744+00	LT	200	6	1	NORTH	200	0.028	2	2	2	133	
SN 032-0078 (EMBANKMENT CONE FACING SB TRAFFIC)													
626+00		LT	50	8	2		30	0.01	1	1	1	44	
TOTALS							30	3,050	0.50	39	39	39	2,078

* LOCATION TO BE GRADED AWAY FROM CONCRETE PAD FOR IMPACT ATTENUATORS

I - 55 LOCATION: 1.2 MI N OF IL 47 TO GARDNER RD IN GARDNER GRUNDY COUNTY					
MONUMENT NUMBER	DESCRIPTION	EXISTING MONUMENT TYPE	PROPOSED MONUMENT TYPE	MONUMENT RECORD TO BE RECORDED	RESPONSIBILITY
N/A	NO PERMANENT SURVEY MARKERS OR OTHER MARKERS TO BE SET OR RESET.	N/A	N/A	N/A	N/A
ONLY THE ORIGINAL SCOPE OF THIS JOB HAS BEEN SEARCHED FOR MONUMENTS. R.E. MUST INFORM PLATS AND PLANS TO SEARCH FOR ADDITIONAL MONUMENTS PRIOR TO MILLING IF ADDENDUMS HAVE BEEN ADDED TO THIS JOB.					
UNKNOWN MONUMENTS MAY EXIST. IF AN UNLISTED MONUMENT IS FOUND, R.E. IS REQUIRED TO PROTECT THE MONUMENT FROM DAMAGE UNTIL A PLATS AND PLANS LAND SURVEYOR CAN DOCUMENT THE MONUMENT. PLATS AND PLANS WILL RESET SUCH MONUMENTS IN KIND FOLLOWING CONSTRUCTION.					
NO MONUMENT RECORDS ARE REQUIRED FOR THIS JOB.					

TEMPORARY TRAFFIC CONTROL 701321 GOODFARM ROAD SCHEDULE										
LOCATION	LENGTH	STAGE 1				STAGE 2				TEMPORAY RUMBLE STRIP
		TEMPORARY BRIDGE TRAFFIC SIGNALS		TEMPORARY CONCRETE BARRIER	IMPACT ATTENUATOR NON-REDIRECTIVE TL 3	TEMPORARY CONCRETE BARRIER	IMPACT ATTENUATOR NON-REDIRECTIVE TL 3	TEMPORAY RUMBLE STRIP		
		LOCATIONS		INSTALL	INSTALL	RELOCATE	RELOCATE	LOCATIONS*		
STA	TO STA	FOOT	STA	WB/EB	FOOT	EACH	FOOT	EACH	WB/EB	EACH
GOODFARM RD (SN 032-0078)			37+98 RT	WB					WB	3
38+52	TO 46+52	800.0	47+16 LT	EB	800.0	1			EB	3
38+58.5	TO 46+46	787.5				1	787.5	1		
TOTALS			2		800	2	787.5	2		6

*LOCATIONS TO BE SET PER STANDARD

MODEL: SCHEDULE 6 (Sheet) FILE NAME: P:\IDOT\Documents\IDOT Office\Direct\3.0RD Project\032-0078\032-0078-SCHEDULES

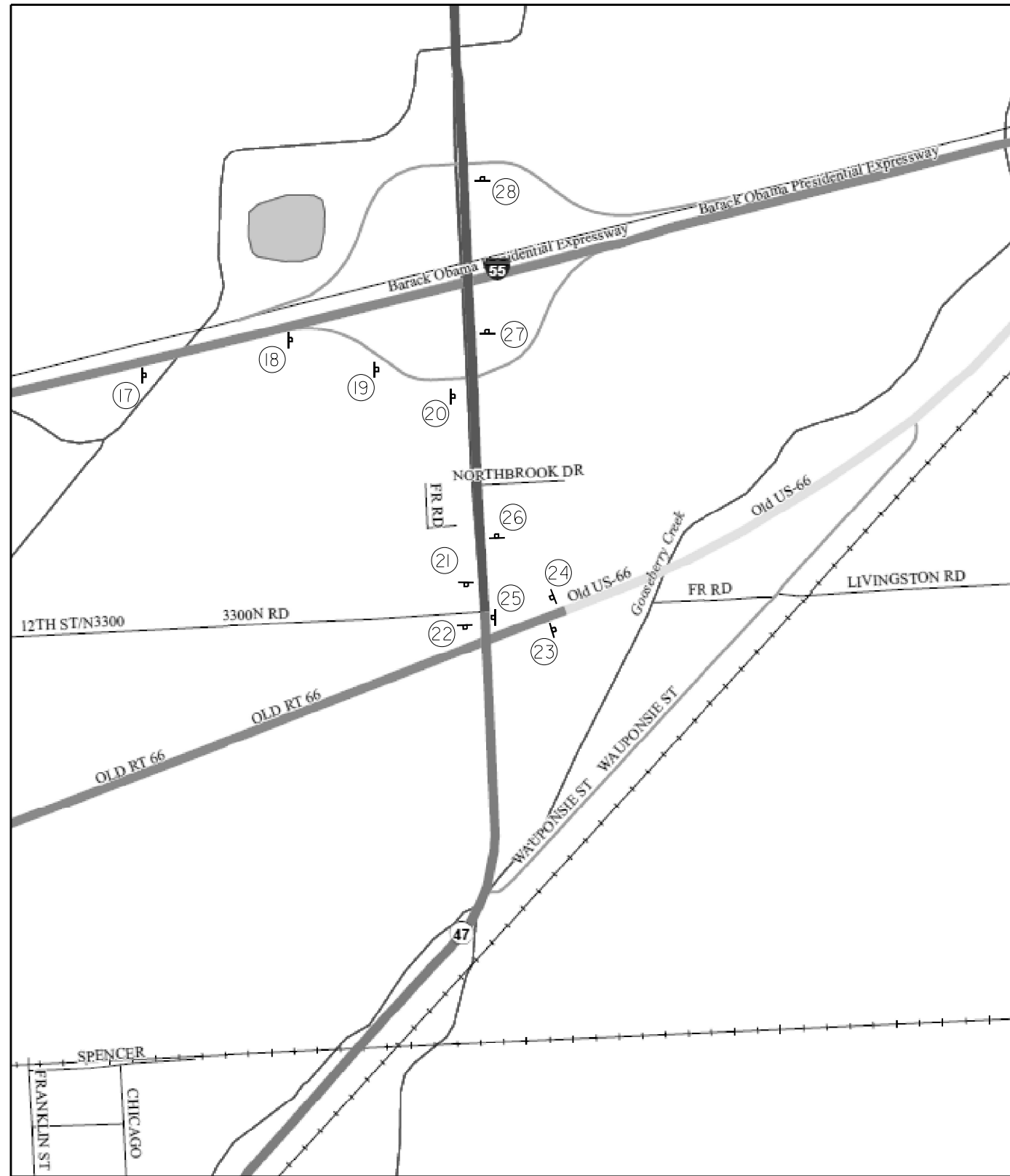
USER NAME = brandon.cris	DESIGNED -	REVISED -
	DRAWN -	REVISED -
PLOT SCALE = 0.16666633 / in.	CHECKED -	REVISED -
PLOT DATE = 11/2/2023	DATE -	REVISED -

**STATE OF ILLINOIS
DEPARTMENT OF TRANSPORTATION**

SCHEDULES

SCALE: SHEET 6 OF 6 SHEETS STA. ___+___ TO STA. ___+___

F.A.I. RTE.	SECTION	COUNTY	TOTAL SHEETS	SHEET NO.
55	(32-2)RS,BRR	GRUNDY	39	16
CONTRACT NO. 66K67				
ILLINOIS FED. AID PROJECT				



SIGN NUMBER	LOCATION	PANELS
17	I-55 (NB) AT 1/2 MILE EXIT BOARD	AE
18	I-55 (NB) AT THE STAT OF RAMP FOR IL 47	AH
19	I-55 (NB) RAMP 750 FT PRIOR TO SIGN 20	AC
20	TOP OF THE RAMP FOR I-55 (NB) TRAFFIC HEADING SOUTH ON IL 47	AG
21	IL 47 250 FT PRIOR TO SIGN 22	AD
22	IL 47 AT OLD RTE 66 INTERSECTION	AF
23	OLD RTE 66 250 FT AFTER IL 47 AND OLD RTE 66 INTERSECTION	AI
24	OLD RTE 66 250 FT PRIOR TO SIGN 25	BC
25	OLD RTE 66 AT IL 47 INTERSECTION	BG
26	IL 47 250 FT AFTER IL 47 AND OLD RTE 66 INTERSECTION	BI
27	IL 47 1000 FT PRIOR TO SIGN 28	BD
28	IL 47 AT RAMP FOR I-55 (SB)	BF

MODEL: ALTERNATE ROUTE PLAN-1 (Sheet)
 FILE NAME: c:\p\work\brandon.crisss@illinois.gov\0854423\036667 ALTERNATE ROUTE.dgn

USER NAME = brandon.crisss	DESIGNED -	REVISED -
DRAWN -	REVISED -	
PLOT SCALE = 0.16666833' / in.	CHECKED -	REVISED -
PLOT DATE = 11/2/2023	DATE -	REVISED -

STATE OF ILLINOIS
DEPARTMENT OF TRANSPORTATION

ALTERNATE ROUTE SINGING

SCALE: 1"=50' SHEET 2 OF 2 SHEETS STA. ___+___ TO STA. ___+___

F.A.I. RTE.	SECTION	COUNTY	TOTAL SHEETS	SHEET NO.
55	(32-2)RS,BRR	GRUNDY	39	21
CONTRACT NO. 66K67				
ILLINOIS FED. AID PROJECT				

Existing Structure: SN 032-0078 built in 1979 as FAI Rte. 55, Section 32-2HVB at I-55 Sta. 626+00. The structure is a four-span continuous steel girder bridge composite in positive moment regions, supported on sand-filled vaulted abutments and trapezoidal piers. In 2002, the expansion joints and deck overlay was replaced and floor drains were retrofit. In 2007, the structural steel was painted. In 2008, steel beams over SB traffic were repaired. In 2012, the pier crash walls were raised. The bridge measures 531'-6" back to back approach bents and 30'-0" out to out, with a 30°00'00" left forward skew. Stage construction will be utilized to maintain one lane of traffic.

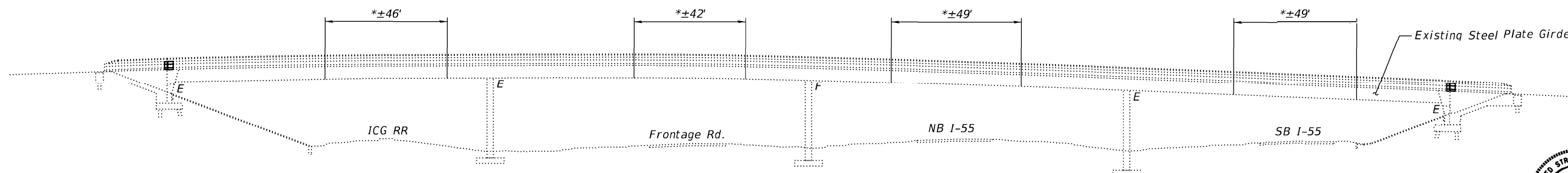
INDEX OF SHEETS

1. General Plan and Elevation
2. General Data
3. Stage Construction Details
4. Deck Slab Repair Plan
- 5-7. Joint Replacement Details
8. Preformed Joint Strip Seal
9. Bar Splicer Assembly Details
10. Substructure Repairs

SCOPE OF WORK

1. Remove portions of existing concrete deck and parapets as required to replace expansion joints at abutments.
2. Remove existing overlay and perform 3/4" scarification of existing slab.
3. Provide new strip seal expansion joints and adjacent superstructure concrete over abutments.
4. Perform repairs to existing parapets.
5. Place new 2 3/4" latex concrete overlay on deck and approach slabs.
6. Perform concrete repairs on abutment backwalls and seal the joints between the abutment and slope wall.
7. Place CLSM under approach shoulders as required.
8. Add strip of riprap along edges of existing slope walls.

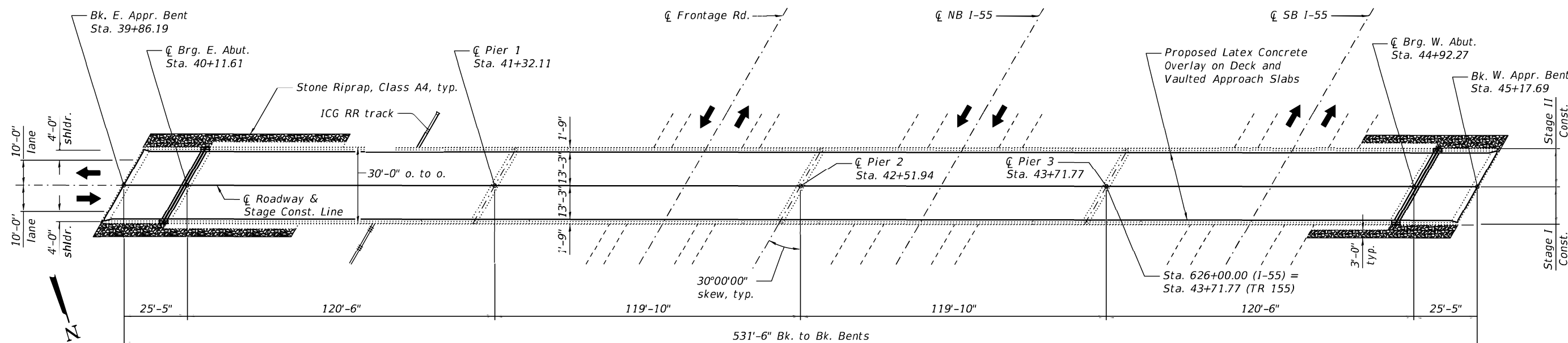
*Limits of Protective Shield



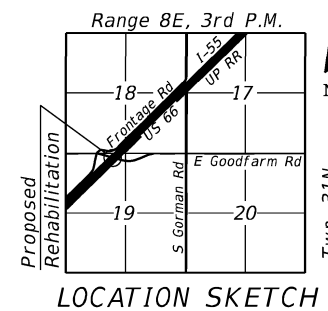
ELEVATION



Michael T. Haley 10/2/2023
 Michael T. Haley Date
 Licensed Structural Engineer
 State of Illinois No. 081-005991
 Expires 11/30/2024



PLAN



GENERAL PLAN AND ELEVATION
TR 155 OVER I-55/OR 66/ ICG RR
F.A.I. RTE. 55 SECTION (32-2)RS,BRR
GRUNDY COUNTY
I-55 STATION 626+00.00
STRUCTURE NO. 032-0078

DESIGN SPECIFICATIONS

(New Construction)
 2002 AASHTO Standard Specifications for Highway Bridges, 17th Edition

DESIGN STRESSES

FIELD UNITS - NEW CONSTRUCTION
 f'c = 4,000 psi (Superstructure)
 fy = 60,000 psi (Reinforcement)

LOADING HS-15

(Original Construction)
 No allowance for future wearing surface.

STATE OF ILLINOIS
DEPARTMENT OF TRANSPORTATION

SHEET 1 OF 10 SHEETS

FAI RTE.	SECTION	COUNTY	TOTAL SHEETS	SHEET NO.
55	(32-2)RS,BRR	GRUNDY	39	22
CONTRACT NO. 66K67				

ILLINOIS FED. AID PROJECT

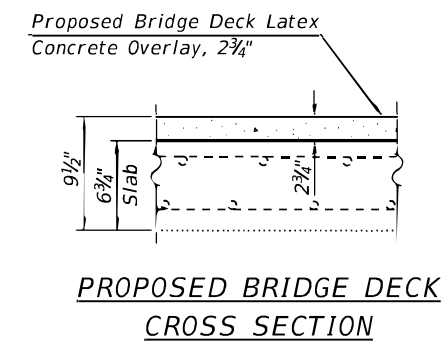
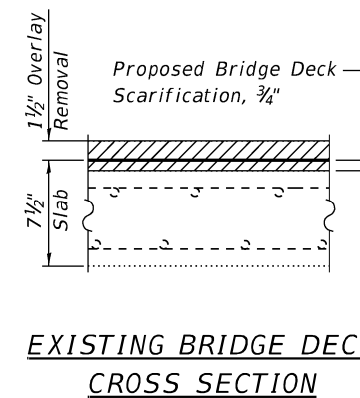
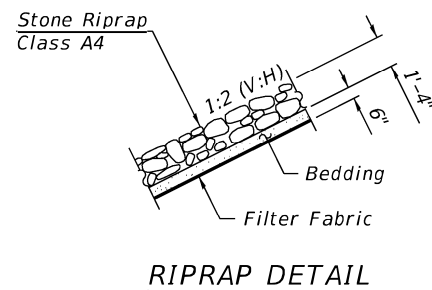
MODEL: Default
 FILE NAME: E:\124-9\SN_032-0078\FinalDesign\CADD_Sheets\0320078-66K67-001-GPE.dgn

GENERAL NOTES

1. Reinforcement bars designated (E) shall be epoxy coated.
2. Plan dimensions and details relative to existing plans are subject to nominal construction variations. The Contractor shall field verify existing dimensions and details affecting new construction and make necessary approved adjustments prior to construction or ordering of materials. Such variations shall not be cause for additional compensation for a change in scope of the work, however, the Contractor will be paid for the quantity actually furnished at the unit price bid for the work.
3. Existing reinforcement bars extending into the removal area shall be cleaned, straightened and incorporated into the new construction. Any reinforcement bars that are damaged during concrete removal shall be replaced with an approved bar splicer or anchorage system. Cost included with Concrete Removal.
4. Cost of removal and disposal of existing expansion joints shall be included in the cost of Concrete Removal.
5. Protective Coat shall be applied to the top surface of new overlay and the inside and top faces of new concrete adjacent to joints.
6. Concrete Sealer shall be applied to the exposed faces of the abutment backwalls and abutment seats.
7. Joint openings shall be adjusted according to Article 520.04 of the Std. Specs. when the concrete adjacent to joints is poured at an ambient temperature other than 50°F.
8. Expansion joints shall be fabricated to conform to the existing cross slope of the bridge.
9. Callouts in the plans for '1½" Overlay Removal' include removing the 1½" HMA overlay and the nominally ½" thick waterproofing membrane system. All work shall be included in the cost of Hot-Mix Asphalt Surface Removal (Deck).

TOTAL BILL OF MATERIAL

ITEM	UNIT	SUPER	SUB	TOTAL
Stone Riprap, Class A4	Sq. Yd.	-	126	126
Filter Fabric	Sq. Yd.	-	126	126
Concrete Removal	Cu. Yd.	4.0	-	4.0
Protective Shield	Sq. Yd.	620	-	620
Concrete Superstructure	Cu. Yd.	4.2	-	4.2
Bridge Deck Grooving	Sq. Yd.	1,444	-	1,444
Protective Coat	Sq. Yd.	1,565	-	1,565
Reinforcement Bars, Epoxy Coated	Pound	640	-	640
Bar Splicers	Each	8	-	8
Mechanical Splicers	Each	44	-	44
Prefomed Joint Strip Seal	Foot	66	-	66
Concrete Sealer	Sq. Ft.	-	449	449
Epoxy Crack Injection	Foot	-	12	12
Controlled Low-Strength Material	Cu. Yd.	-	4.0	4.0
Bridge Deck Latex Concrete Overlay, 2¾ Inches	Sq. Yd.	1,549	-	1,549
Bridge Deck Scarification, ¾ Inch	Sq. Yd.	1,549	-	1,549
Structural Repair of Concrete (Depth Equal to or Less Than 5 Inches)	Sq. Ft.	10	3	13
Deck Slab Repair (Full Depth, Type I)	Sq. Yd.	7	-	7
Deck Slab Repair (Full Depth, Type II)	Sq. Yd.	2	-	2
Hot-Mix Asphalt Surface Removal (Deck)	Sq. Yd.	1,549	-	1,549
Silicone Joint Sealer, 2"	Foot	-	64	64



MODEL: Default
FILE NAME: E:\2124-9\SN_032-0078\Final\Design\CADD_Sheets\0320078-66K67-002-GenData.dgn



USER NAME =	DESIGNED - MTH	REVISED -
	CHECKED - CZ	REVISED -
PLOT SCALE =	DRAWN - AJF	REVISED -
PLOT DATE = 10/18/2023	CHECKED - CZ	REVISED -

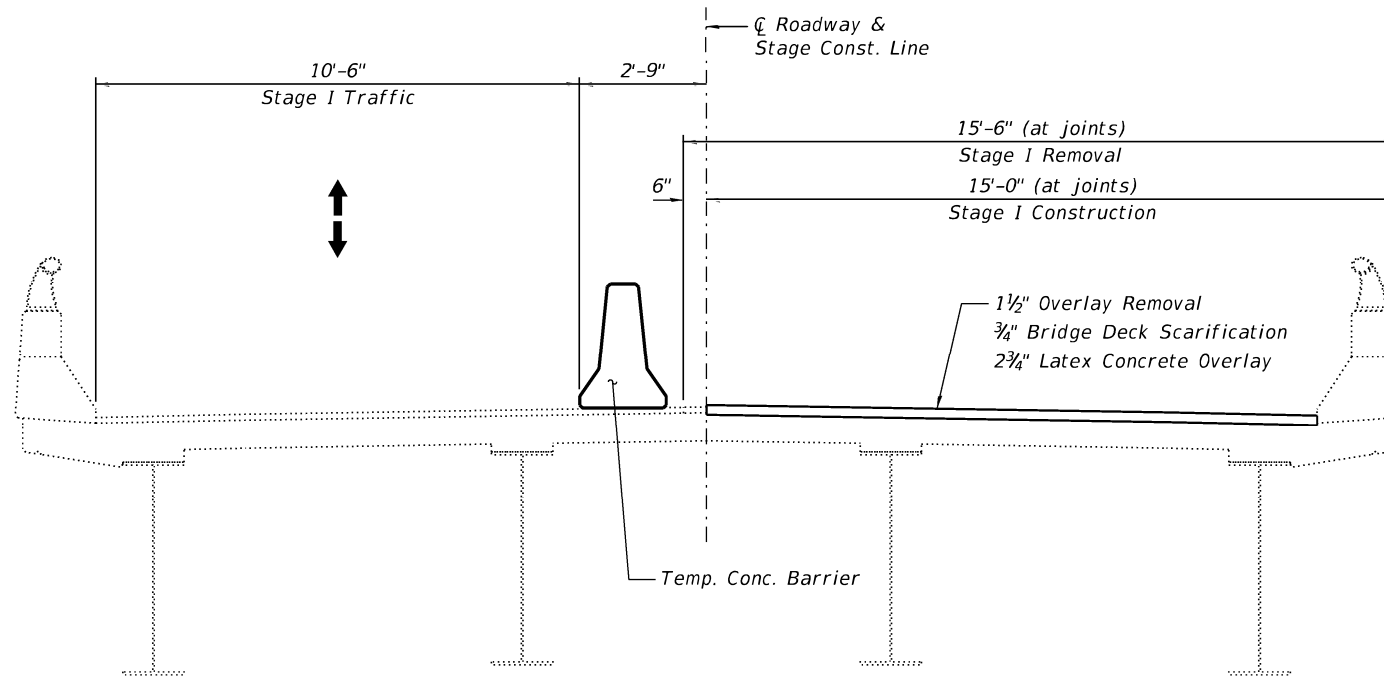
**STATE OF ILLINOIS
DEPARTMENT OF TRANSPORTATION**

**GENERAL DATA
STRUCTURE NO. 032-0078**

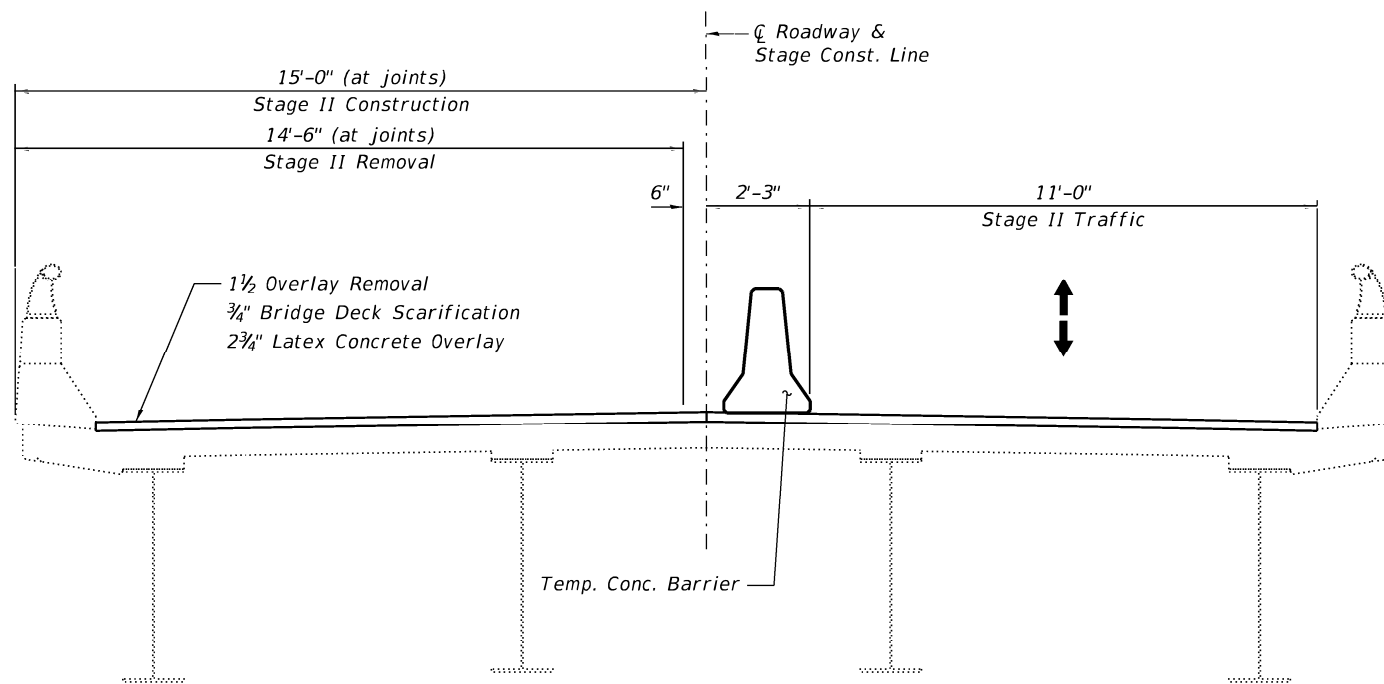
SHEET 2 OF 10 SHEETS

F.A.I. RTE.	SECTION	COUNTY	TOTAL SHEETS	SHEET NO.
55	(32-2)RS,BRR	GRUNDY	39	23
CONTRACT NO. 66K67				

ILLINOIS FED. AID PROJECT



STAGE I REMOVAL & CONSTRUCTION



STAGE II REMOVAL & CONSTRUCTION

Notes:
 All sections are looking west.
 See Roadway Plans for Temporary Concrete Barrier quantities.
 All transverse dimensions are measured at right angles to ζ Roadway.

MODEL: Default
 FILE NAME: E:\2124-9\51 032-0078\FinalDesign\CADD_Sheets\0320078-66K67-003-StageConstDets.dgn

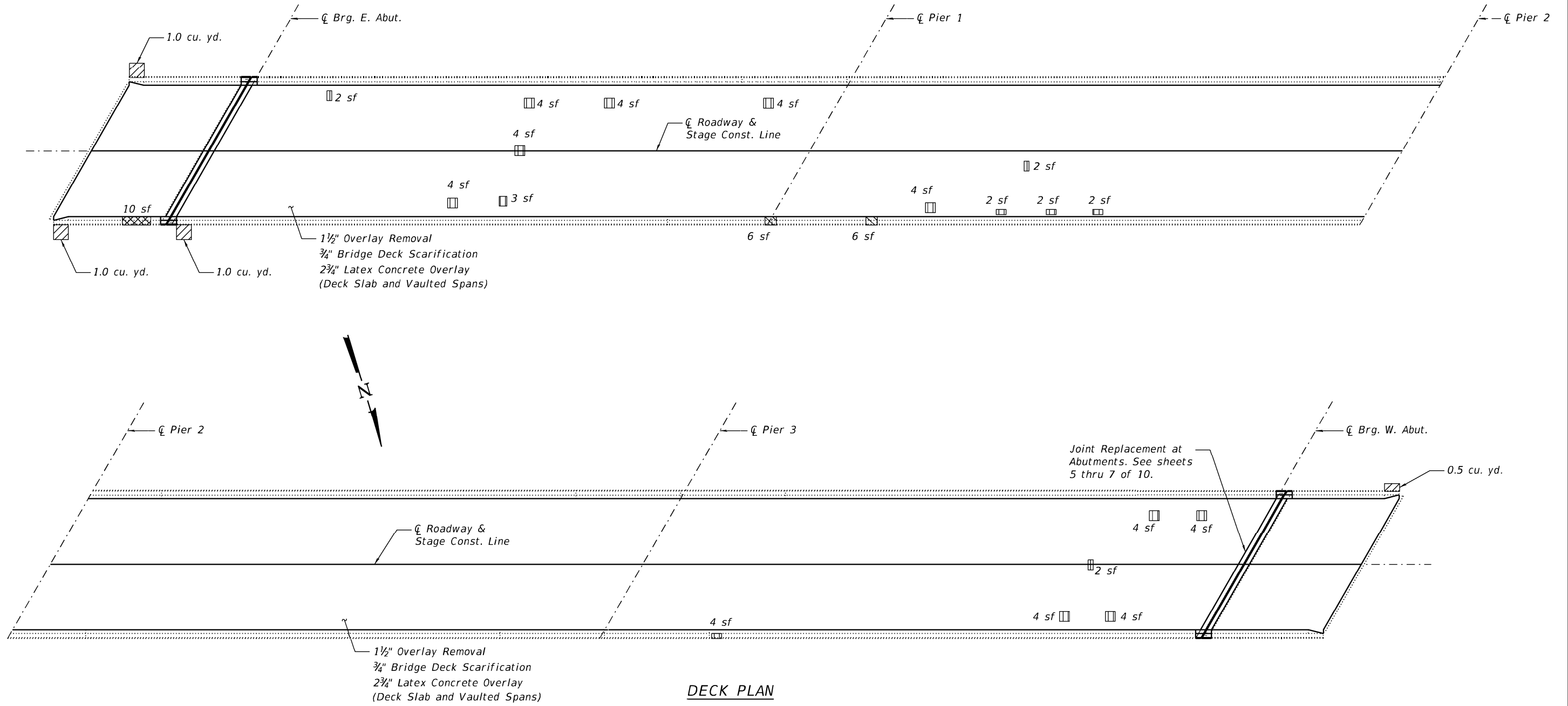
E LIN ENGINEERING, L.T.D. Consulting Engineers <small>Springfield, Illinois</small>	USER NAME =	DESIGNED - MTH	REVISED -
		CHECKED - CZ	REVISED -
	PLOT SCALE	DRAWN - AJF	REVISED -
	PLOT DATE = 10/18/2023	CHECKED - CZ	REVISED -

STATE OF ILLINOIS
 DEPARTMENT OF TRANSPORTATION

STAGE CONSTRUCTION DETAILS
 STRUCTURE NO. 032-0078

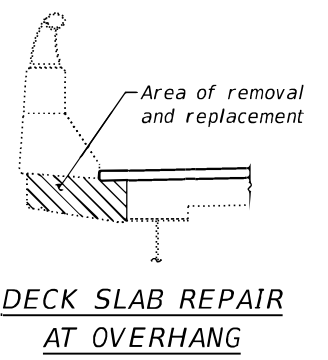
SHEET 3 OF 10 SHEETS

F.A.I. RTE.	SECTION	COUNTY	TOTAL SHEETS	SHEET NO.
55	(32-2)RS,BRR	GRUNDY	39	24
CONTRACT NO. 66K67				
ILLINOIS FED. AID PROJECT				



DECK PLAN

- LEGEND**
- Structural Repair of Concrete (Depth Equal to or Less Than 5 Inches)
 - Deck Slab Repair (Full Depth, Type I)
 - Deck Slab Repair (Full Depth, Type II)
 - Controlled Low Strength Material
- sf - Square Feet



Note:
Repair areas shown are estimated. The Engineer shall document actual locations of repairs on As-Built Plans.

BILL OF MATERIAL

ITEM	UNIT	TOTAL
Controlled Low Strength Material	Cu. Yd.	3.5
Structural Repair of Concrete (Depth Equal to or Less Than 5 Inches)	Sq. Ft	10
Deck Slab Repair (Full Depth, Type I)	Sq. Yd.	7
Deck Slab Repair (Full Depth, Type II)	Sq. Yd.	2

MODEL: Default
FILE NAME: E:\2124-9\SN_032-0078\Final\Design\CADD_Sheets\0320078-66K67-004-DeckSlabPlan.dgn



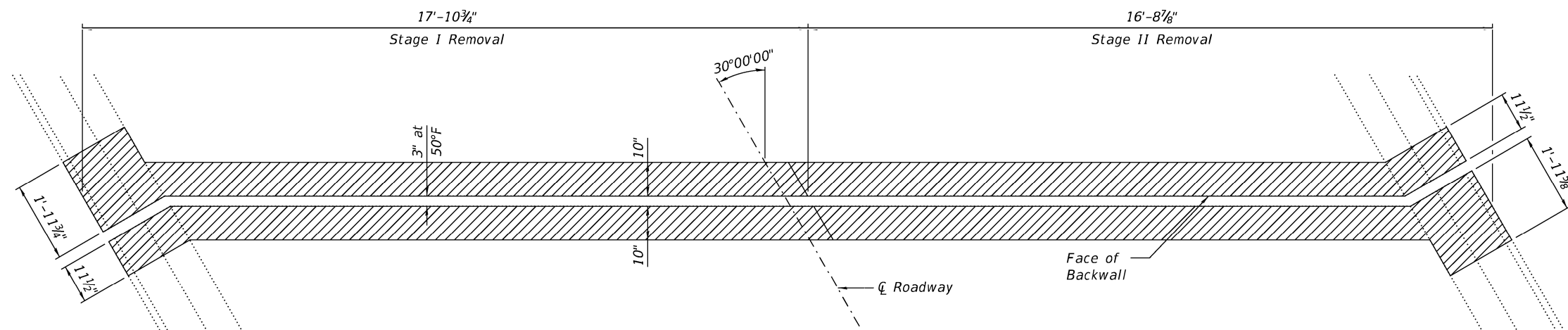
USER NAME =	DESIGNED - MTH	REVISED -
PLOT SCALE =	CHECKED - CZ	REVISED -
PLOT DATE = 10/19/2023	DRAWN - AJF	REVISED -
	CHECKED - CZ	REVISED -

STATE OF ILLINOIS
DEPARTMENT OF TRANSPORTATION

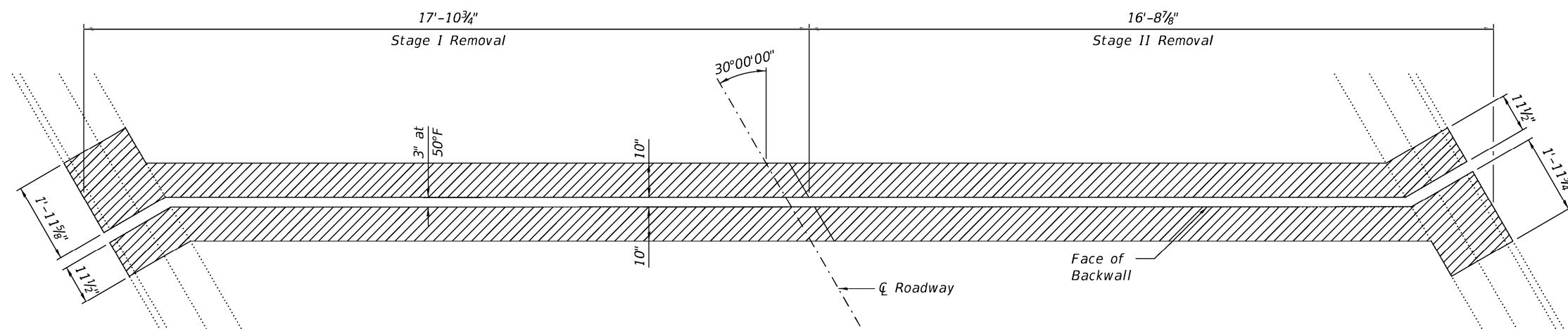
DECK SLAB REPAIR PLAN
STRUCTURE NO. 032-0078

SHEET 4 OF 10 SHEETS

F.A.T. RTE.	SECTION	COUNTY	TOTAL SHEETS	SHEET NO.
55	(32-2)RS,BRR	GRUNDY	39	25
CONTRACT NO. 66K67				
ILLINOIS FED. AID PROJECT				



JOINT REMOVAL AT EAST ABUTMENT



JOINT REMOVAL AT WEST ABUTMENT

Notes:
 Hatched areas indicate limits of
 Concrete Removal.
 See Sheet 7 of 10 for Sections.

MODEL: Default
 FILE NAME: E:\2124-9\SN 032-0078\FinalDesign\CADD_Sheets\0320078-66K67-005-11RepDets.dgn

(Sheet 1 of 3)

LE LIN ENGINEERING, LTD.
 Consulting Engineers
 Springfield, Illinois

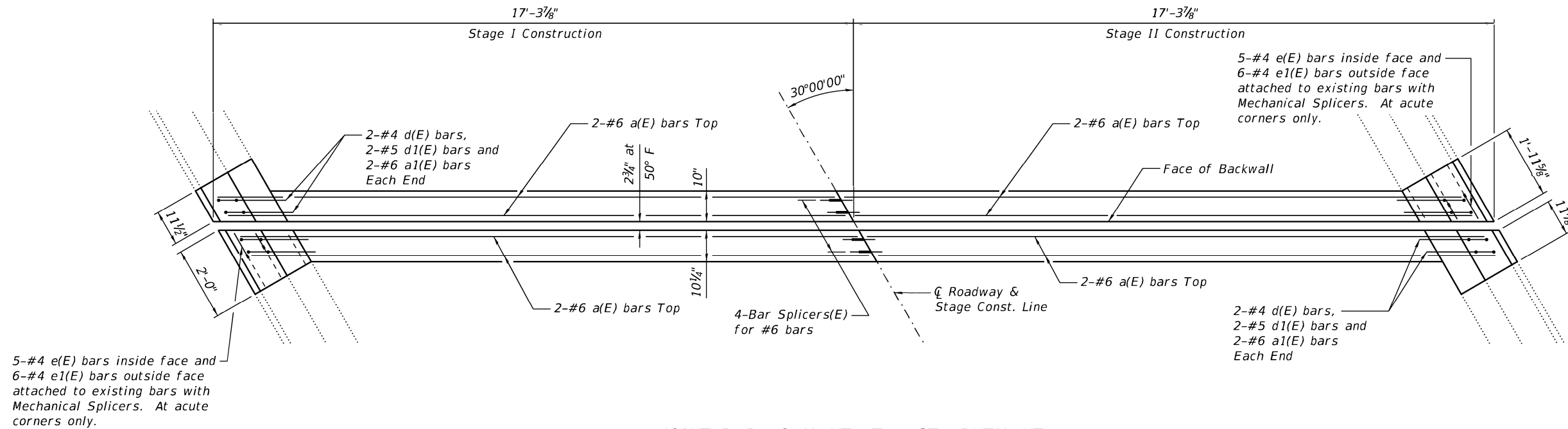
USER NAME =	DESIGNED - MTH	REVISED -
	CHECKED - CZ	REVISED -
PLOT SCALE =	DRAWN - AJF	REVISED -
PLOT DATE = 10/18/2023	CHECKED - CZ	REVISED -

STATE OF ILLINOIS
 DEPARTMENT OF TRANSPORTATION

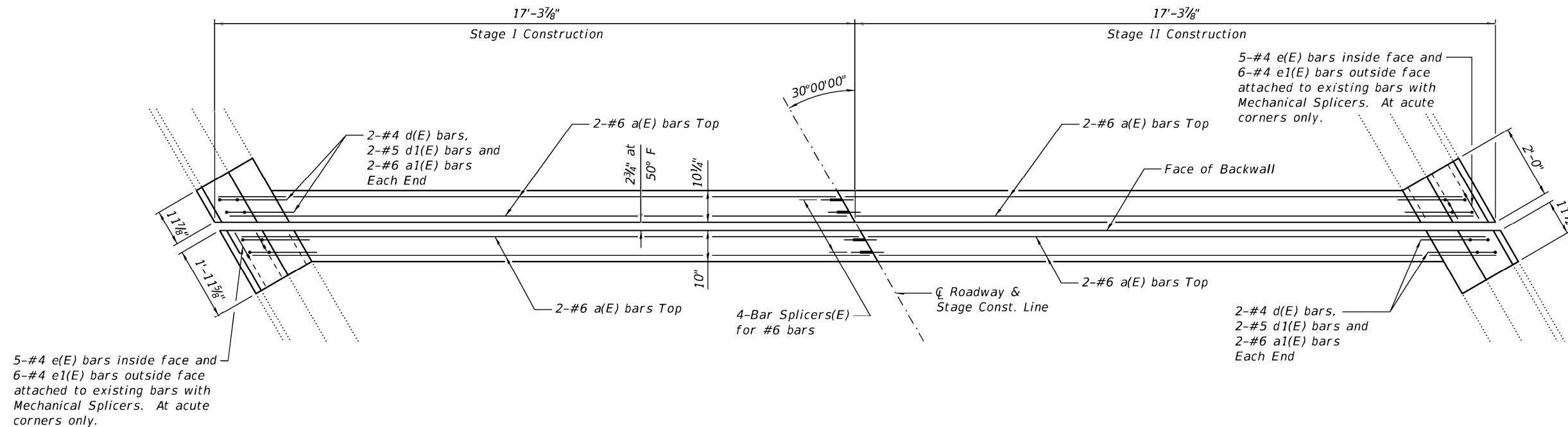
JOINT REPLACEMENT DETAILS
 STRUCTURE NO. 032-0078

SHEET 5 OF 10 SHEETS

FAI RTE.	SECTION	COUNTY	TOTAL SHEETS	SHEET NO.
55	(32-2)RS,BRR	GRUNDY	39	26
CONTRACT NO. 66K67				
ILLINOIS FED. AID PROJECT				



JOINT REPLACEMENT AT EAST ABUTMENT



JOINT REPLACEMENT AT WEST ABUTMENT

(Sheet 2 of 3)

MODEL: Default
FILE NAME: E:\2124-5\N 032-0078\FinalDesign\CADD\CADD_Sheets\0320078-66K67-006-IRRepDets.dgn



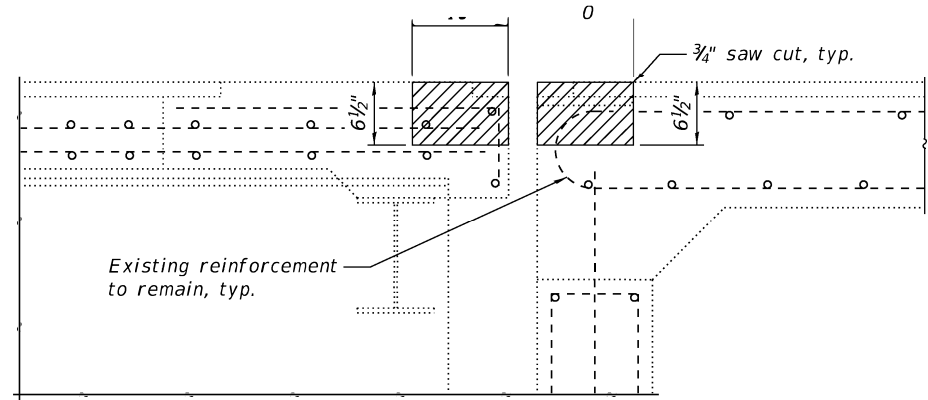
USER NAME =	DESIGNED - MTH	REVISED -
	CHECKED - CZ	REVISED -
PLOT SCALE =	DRAWN - AJF	REVISED -
PLOT DATE = 10/18/2023	CHECKED - CZ	REVISED -

STATE OF ILLINOIS
DEPARTMENT OF TRANSPORTATION

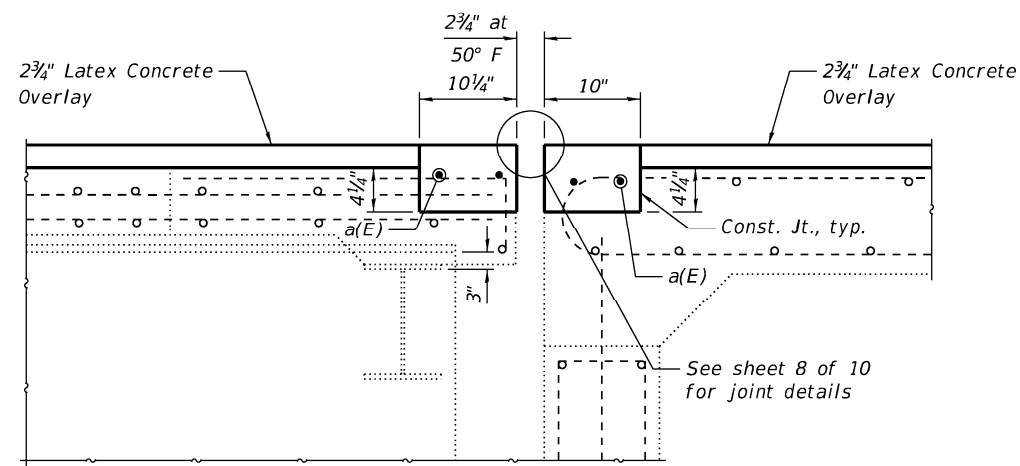
JOINT REPLACEMENT DETAILS
STRUCTURE NO. 032-0078

SHEET 6 OF 10 SHEETS

F.A.I. RTE.	SECTION	COUNTY	TOTAL SHEETS	SHEET NO.
55	(32-2)RS,BRR	GRUNDY	39	27
CONTRACT NO. 66K67				
ILLINOIS FED. AID PROJECT				



SECTION THRU JOINT AT ABUTMENTS
(Showing Removal)

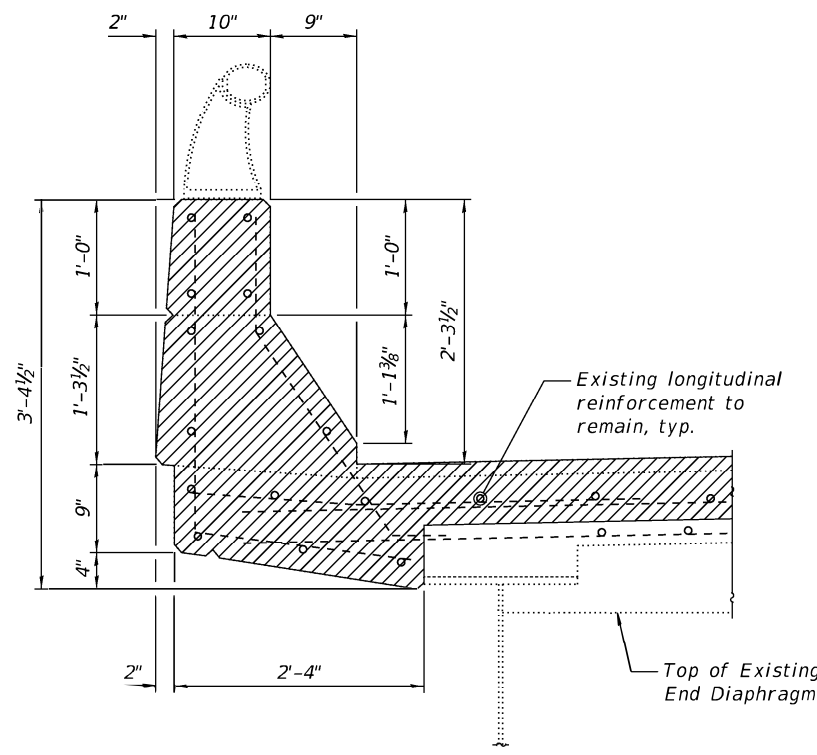
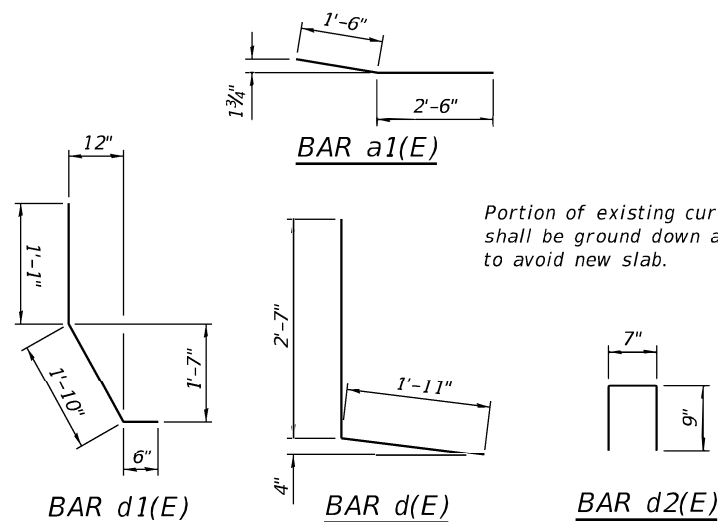


SECTION THRU JOINT AT ABUTMENTS
(Showing Proposed)

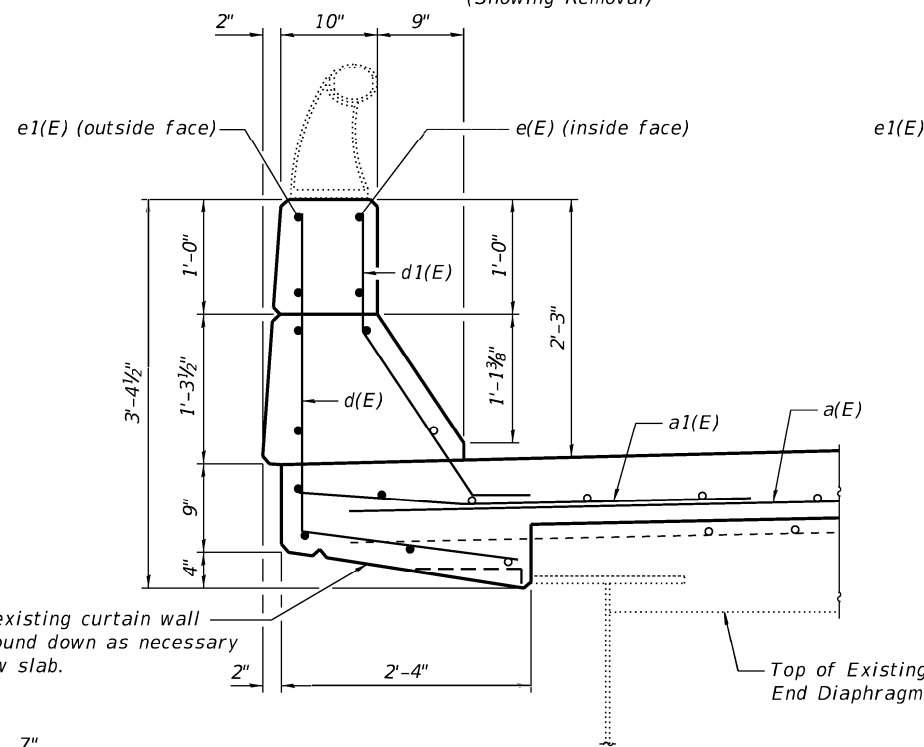
BILL OF MATERIAL

Bar	No.	Size	Length	Shape
a(E)	16	#6	16'-9"	—
a1(E)	16	#6	4'-0"	—
d(E)	16	#4	4'-6"	L
d1(E)	16	#5	3'-5"	—
d2(E)	8	#4	2'-1"	□
e(E)	20	#4	0'-7"	—
e1(E)	24	#4	0'-10"	—
Concrete Removal		Cu. Yd.	4.0	
Concrete Superstructure		Cu. Yd.	4.2	
Reinforcement Bars, Epoxy Coated		Pound	640	

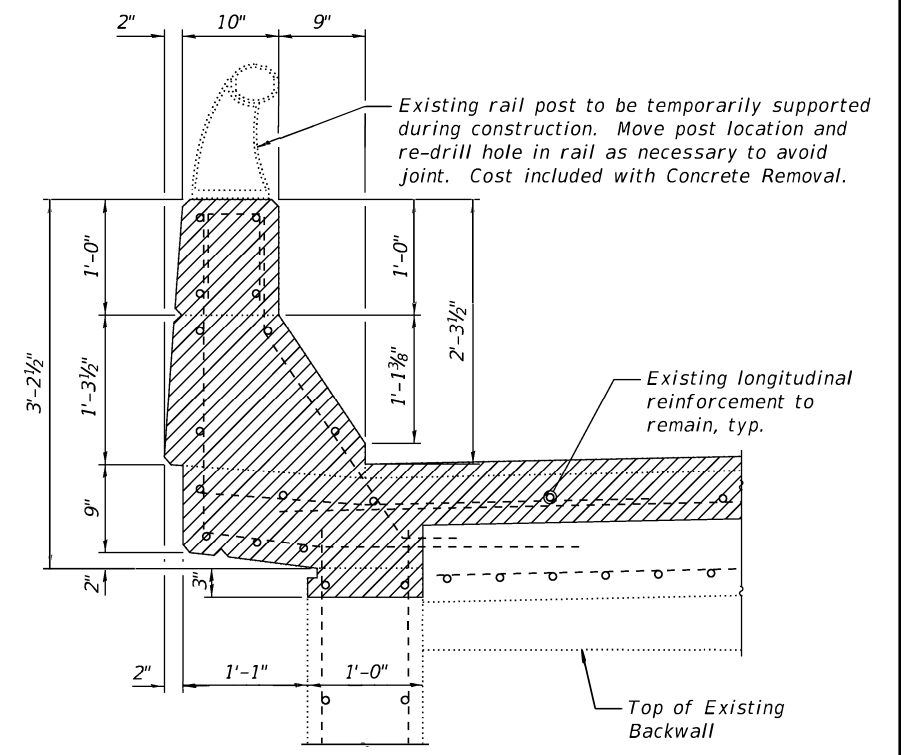
Note:
Hatched areas indicate limits of
Concrete Removal.



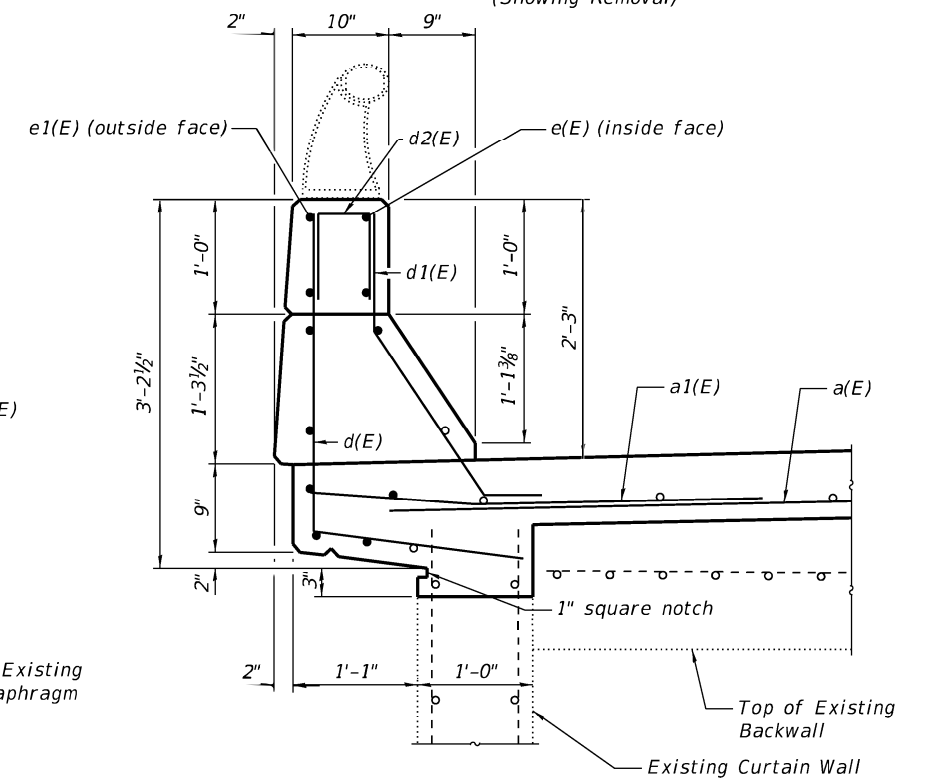
SECTION THRU PARAPET AT JOINT
ON BRIDGE DECK SIDE
(Showing Removal)



SECTION THRU PARAPET AT JOINT
ON BRIDGE DECK SIDE
(Showing Proposed)



SECTION THRU PARAPET AT JOINT
ON APPROACH SIDE
(Showing Removal)



SECTION THRU PARAPET AT JOINT
ON APPROACH SIDE
(Showing Proposed)

(Sheet 3 of 3)

MODEL: Default
FILE NAME: E:\2124-95N_032-0078\FinalDesign\CADD_Sheets\0320078-66K67-007-JRRepDets.dgn

LE LIN ENGINEERING, LTD.
Consulting Engineers
Springfield, Illinois

USER NAME =	DESIGNED - MTH	REVISED -
PLO TSCALE =	CHECKED - CZ	REVISED -
PLOT DATE = 10/19/2023	DRAWN - AJF	REVISED -
	CHECKED - CZ	REVISED -

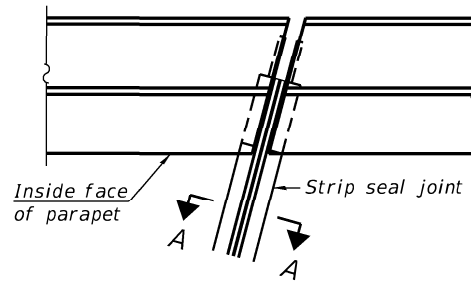
STATE OF ILLINOIS
DEPARTMENT OF TRANSPORTATION

JOINT REPLACEMENT DETAILS
STRUCTURE NO. 032-0078

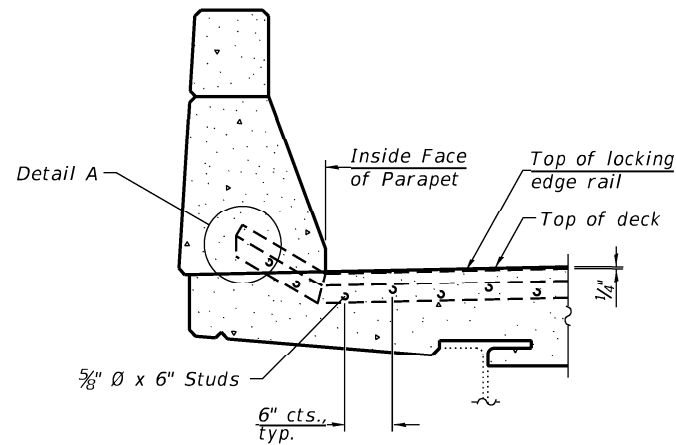
SHEET 7 OF 10 SHEETS

F.A.I. RTE.	SECTION	COUNTY	TOTAL SHEETS	SHEET NO.
55	(32-2)RS,BRR	GRUNDY	39	28
CONTRACT NO. 66K67				

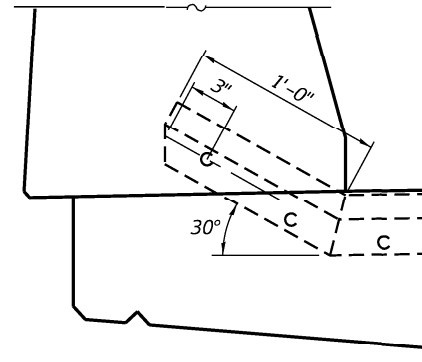
ILLINOIS FED. AID PROJECT



PLAN AT PARAPET



SECTION AT PARAPET



DETAIL A

Notes:

The strip seal shall be made continuous and shall have a minimum thickness of 1/4". The configuration of the strip seal shall match the configuration of the locking edge rails. Open or "webbed" strip seal gland configurations are not permitted. The gland shall be sized for a maximum rated movement of 4 inches.

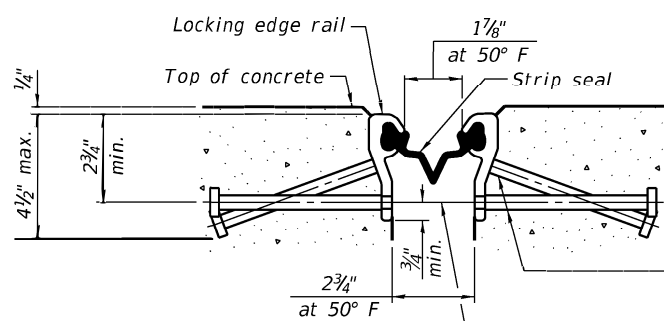
The locking edge rails depicted are configured for typical applications and are conceptual only. The actual configuration of the locking edge rails and matching strip seal may vary from manufacturer to manufacturer provided they fit the application and meet the minimum anchorage shown. Flanged edge rails, however, will not be allowed. Locking edge rails may exceed the 4 1/2" maximum depth provided the anchorage system is revised according to the manufacturer's recommendation.

The manufacturer's recommended installation methods shall be followed.

All steel components shall be galvanized after fabrication according to Article 520.03 of the Standard Specifications.

The Maximum space between locking edge rail segments shall be 3/16" and sealed with a suitable sealant; however, any rail joint within 10' measured perpendicular to the face of the curb or parapet shall be welded as shown in the locking edge rail splice detail.

The concrete opening below the strip seal will vary based on the locking edge rail chosen by the Contractor. Deck and parapet lengths shown elsewhere in the plans are dimensioned to the concrete opening, not the joint opening, and are based on the rolled locking edge rail. If the Contractor elects to use a different locking edge rail, dimensional adjustments may be required.



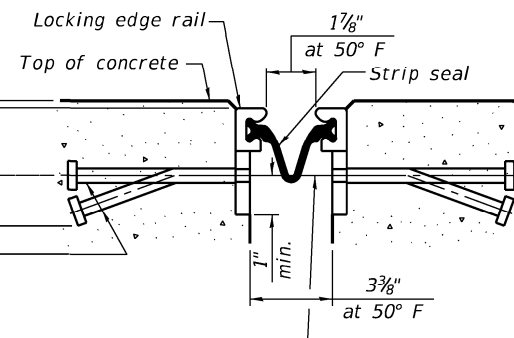
SHOWING ROLLED RAIL JOINT

* 5/8" ϕ x 6" studs @ 6" cts. (alternate angled/bent studs with horizontal studs)

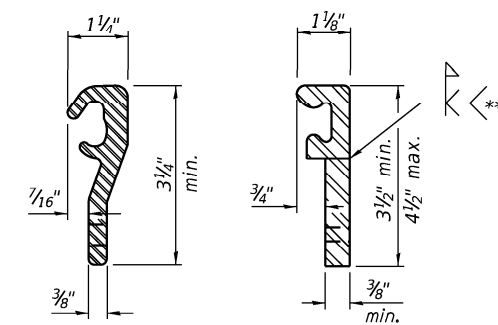
3/8" ϕ threaded rods in 7/16" ϕ holes at $\pm 4'-0"$ cts. for holding the proper joint opening based on the temperature during the deck pour. Place to miss studs. All rods shall be burned, or sawed off flush with the plates after concrete is set.

SECTION A-A

* Granular or solid flux filled headed studs conforming to Article 1006.32 of the Std. Specs., automatically end welded.

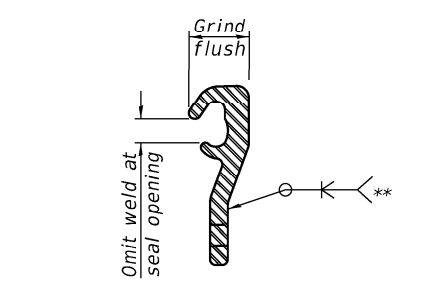


SHOWING WELDED RAIL JOINT



LOCKING EDGE RAILS

** Back gouge not required if complete joint penetration is verified by mock-up.



LOCKING EDGE RAIL SPLICE

The inside of the locking edge rail groove shall be free of weld residue. Rolled rail shown, welded rail similar.

BILL OF MATERIAL

Item	Unit	Total
Preformed Joint Strip Seal	Foot	66

MODEL: Default
FILE NAME: E:\124-9\SN_032-0078\FinalDesign\CADD_Sheets\0320078-66K67-008-PreFormStripSeal.dgn



USER NAME =
DESIGNED - MTH
CHECKED - CZ
PLOT SCALE =
DRAWN - AJF
PLOT DATE = 10/18/2023

DESIGNED - MTH
CHECKED - CZ
DRAWN - AJF
CHECKED - CZ

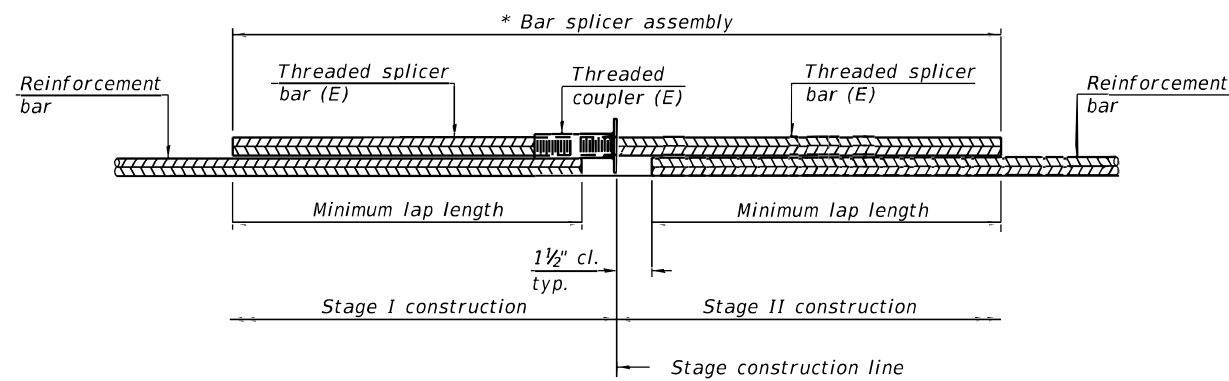
REVISED -
REVISED -
REVISED -
REVISED -

STATE OF ILLINOIS
DEPARTMENT OF TRANSPORTATION

PREFORMED JOINT STRIP SEAL
STRUCTURE NO. 032-0078

SHEET 8 OF 10 SHEETS

F.A.I. RTE.	SECTION	COUNTY	TOTAL SHEETS	SHEET NO.
55	(32-2)RS,BRR	GRUNDY	39	29
CONTRACT NO. 66K67				
ILLINOIS FED. AID PROJECT				



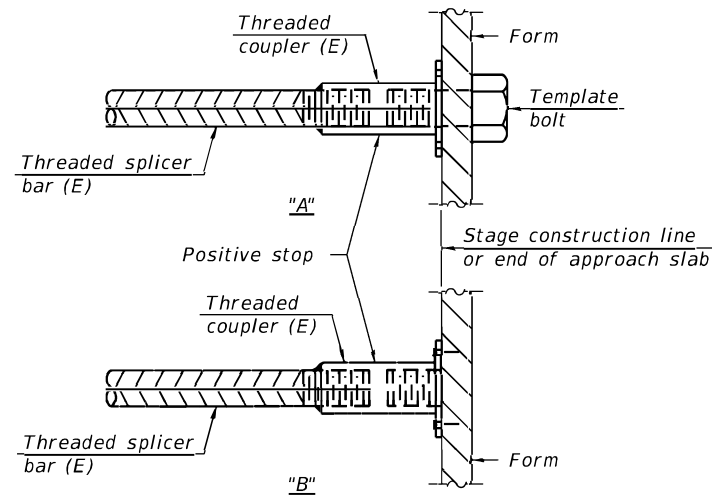
STANDARD BAR SPLICER ASSEMBLY PLAN

Only bar splicer assemblies as presented on the approved QPL list may be used.

Threaded splicer bar length = min. lap length + 1 1/2" + thread length

* Epoxy not required on Bar Splicer Assembly components used in conjunction with black bars.

Location	Bar size	No. assemblies required	Minimum lap length
Approach Slab	#6	4	3'-7"
Deck	#6	4	3'-7"

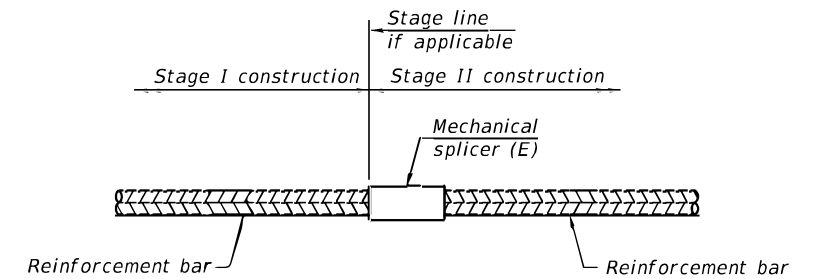


INSTALLATION AND SETTING METHODS

"A" : Set bar splicer assembly by means of a template bolt.

"B" : Set bar splicer assembly by nailing to wood forms or cementing to steel forms.

(E) : Indicates epoxy coating.



STANDARD MECHANICAL SPLICER

Location	Bar size	No. assemblies required
Parapets	#4	44

Notes:

Splicer bars shall be deformed with threaded ends and have a minimum 60 ksi yield strength.

All reinforcement shall be lapped and tied to the splicer bars.

Bar splicer assemblies shall be epoxy coated according to the requirements for reinforcement bars. See Section 508 of the Standard Specifications.

See approved list of bar splicer assemblies and mechanical splicers for alternatives.

MODEL: Default
FILE NAME: E:\2124-9\SN_032-0078\FinalDesign\CADD_Sheets\0320078-66K67-009-BarSplicers.dgn

BSD-1

2-1-2023



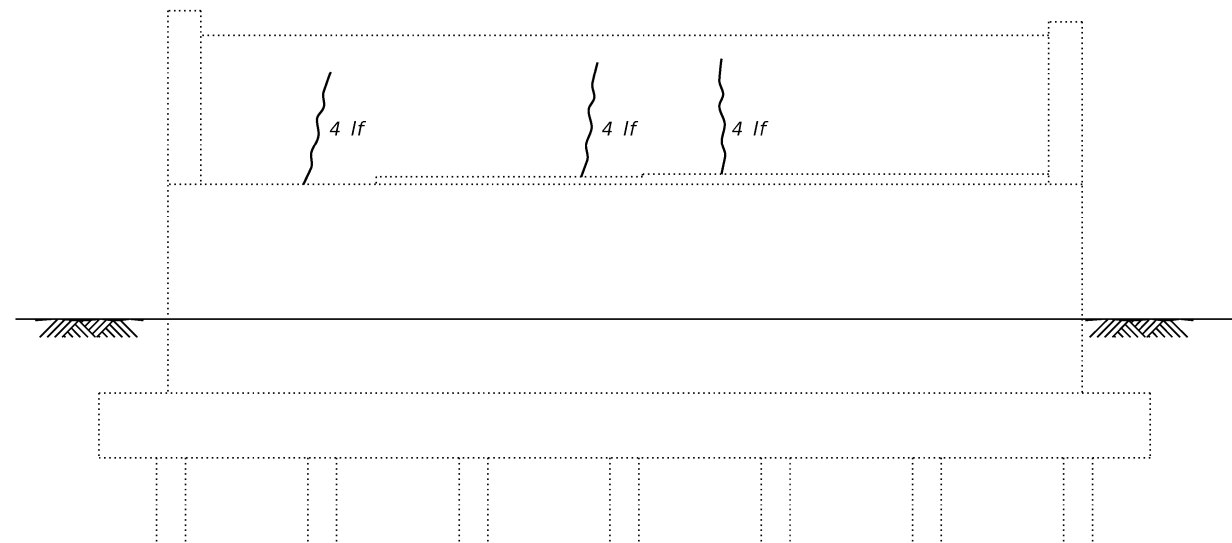
USER NAME =	DESIGNED - MTH	REVISED -
	CHECKED - CZ	REVISED -
PLOT SCALE =	DRAWN - AJF	REVISED -
PLOT DATE = 10/18/2023	CHECKED - CZ	REVISED -

**STATE OF ILLINOIS
DEPARTMENT OF TRANSPORTATION**

**BAR SPLICER ASSEMBLY DETAILS
STRUCTURE NO. 032-0078**

SHEET 9 OF 10 SHEETS

F.A.I. RTE.	SECTI ON	COUNTY	TOTAL SHEETS	SHEET NO.
55	(32-2)RS,BRR	GRUNDY	39	30
			CONTRACT NO. 66K67	
		ILLINOIS	FED. AID PROJECT	



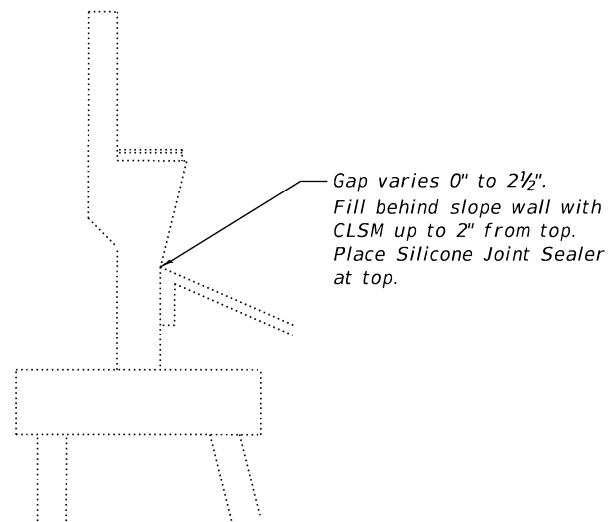
EAST ABUTMENT
(Looking East)



WEST ABUTMENT
(Looking West)

LEGEND

- Structural Repair of Concrete (Depth equal to or less than 5")
- Epoxy Crack Injection
- sf* Square Feet
- lf* Linear Feet



SECTION THRU ABUTMENT

Note:
Repair of the existing abutments shall include but may not be limited to the areas shown. The actual area to be repaired will be determined by the Engineer at the time of construction.

BILL OF MATERIAL

Item	Unit	Total
Structural Repair of Concrete (Depth equal to or less than 5")	Sq. Ft.	3
Epoxy Crack Injection	Foot	12
Controlled Low Strength Material	Cu. Yd.	0.5
Silicone Joint Sealer, 2"	Foot	64

MODEL: Default
FILE NAME: E:\2124-95N_032-0078\Final\Design\CADD_Sheets\0320078-66K67-010-SubRepairs.dgn



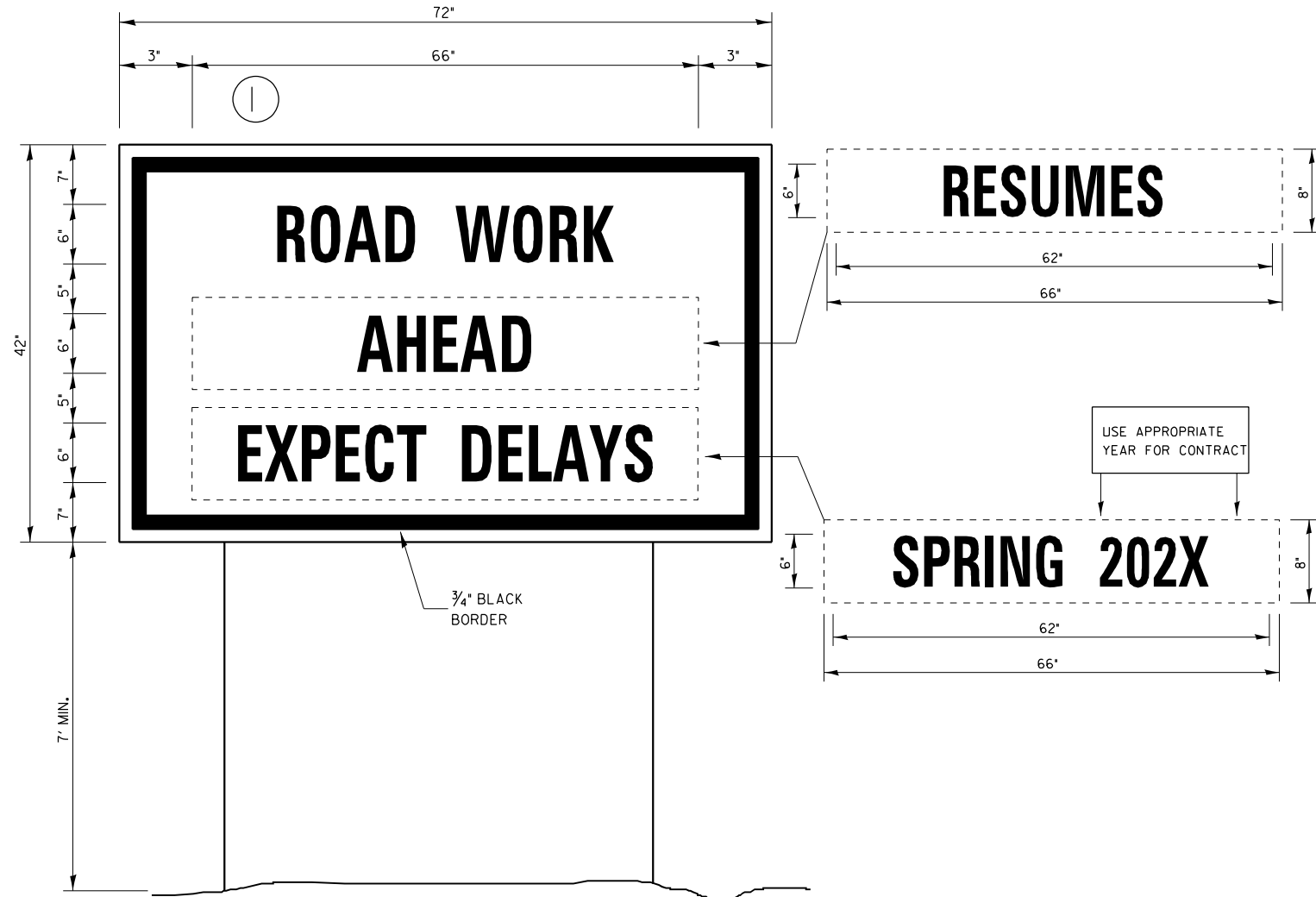
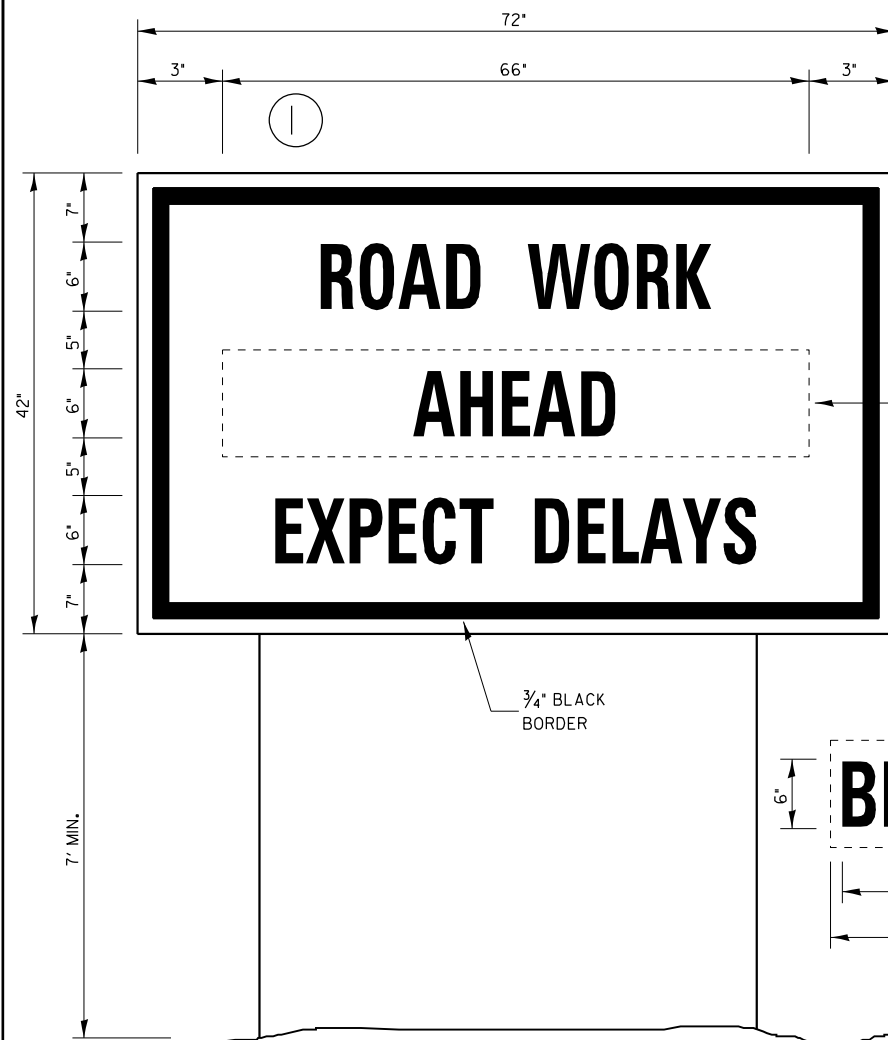
USER NAME =	DESIGNED - MTH	REVISION -
	CHECKED - CZ	REVISION -
PLOT SCALE =	DRAWN - A JF	REVISION -
PLOT DATE = 10/18/2023	CHECKED - CZ	REVISION -

STATE OF ILLINOIS
DEPARTMENT OF TRANSPORTATION

SUBSTRUCTURE REPAIRS
STRUCTURE NO. 032-0078

SHEET 10 OF 10 SHEET - S

F.A.I. RTE.	SECTION	COUNTY	TOTAL SHEETS	SHEET NO.
55	(32-2)RS,BRR	GRUNDY	39	31
CONTRACT NO. 66K67				
		ILLINOIS	FED AID PROJECT	



TEMPORARY INFORMATION SIGNING

WINTER SHUT DOWN SIGNING

NOTES:

1. USE 6" D BLACK LETTERING ON FLOURESENT ORANGE BACKGROUND.
2. ERECT SIGNS AT LOCATIONS IN ADVANCE OF THE "ROAD CONSTRUCTION AHEAD" SIGNS AS DIRECTED BY THE ENGINEER.
3. ERECT SIGN (1) WITH INSTALLED PANEL (2) A MINIMUM OF ONE WEEK PRIOR TO THE START OF THE LANE CLOSURE.
4. REMOVE PANEL (2) ON THAT DATE.
5. SEE SPECIAL PROVISION "TEMPORARY INFORMATION SIGNING" FOR ADDITIONAL INFORMATION.
6. WILL BE PAID FOR PER 50 FT AS "TEMPORARY INFORMATION SIGNING". EACH SIGN = 2150 FT AND THE DATE PANEL (2) WILL NOT BE MEASURED SEPARATELY FOR PAYMENT.

NOTE: THE TEMPORARY INFORMATION SIGNS ARE TO BE INSTALLED ON GOODFARM ROAD.

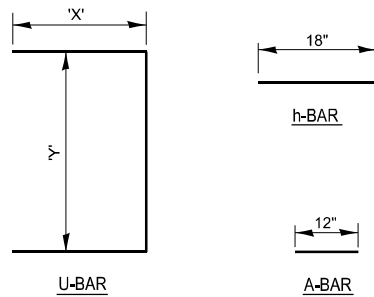
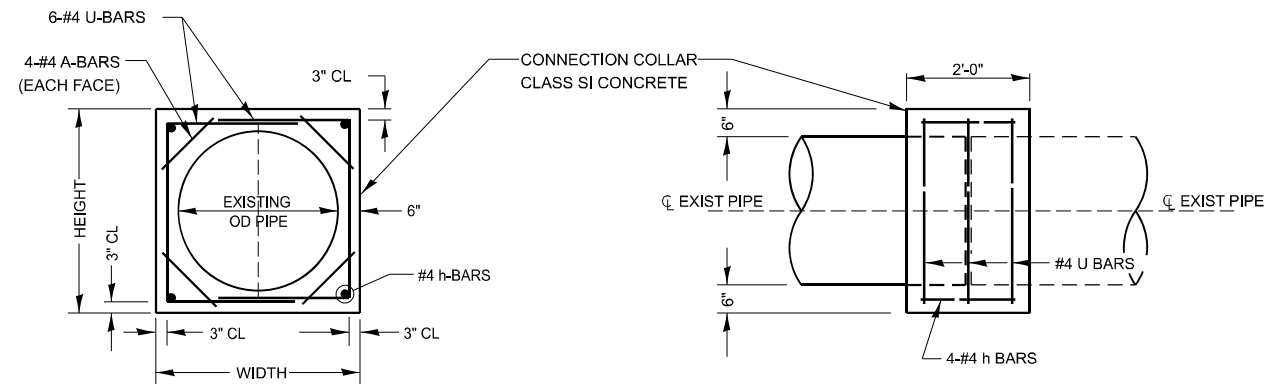
MODEL: DETAIL SHEET 3 (3/16/21) FILE NAME: P:\Bids\2023\11\11\DOT\Documents\DOT Office\District 3\ORD Project\66K67\CADD\Info\CAD\Sheet\66K67-DETAILS

USER NAME = brandon.cofis	DESIGNED - _____	REVISED - _____
PLOT SCALE = 0.16666633' / in.	DRAWN - _____	REVISED - _____
PLOT DATE = 11/2/2023	CHECKED - _____	REVISED - _____
	DATE - _____	REVISED - _____

**STATE OF ILLINOIS
DEPARTMENT OF TRANSPORTATION**

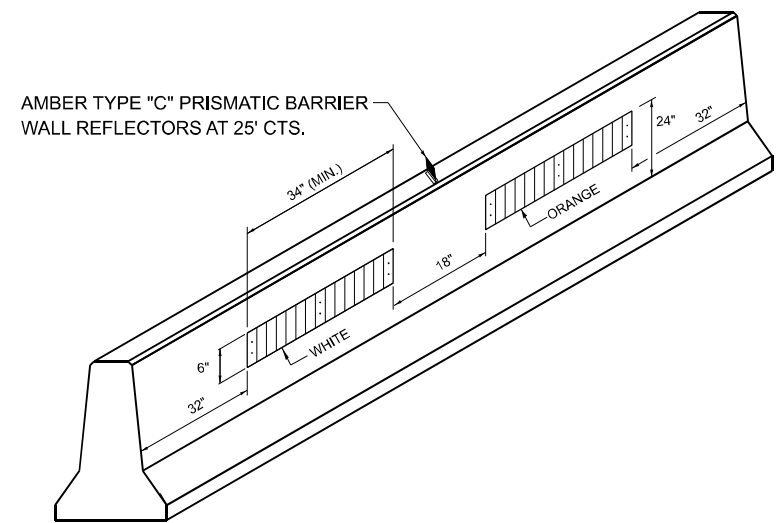
DETAILS			
SCALE:	SHEET 1	OF 7 SHEETS	STA. ___+___ TO STA. ___+___

F.A.I RTE.	SECTION	COUNTY	TOTAL SHEETS	SHEET NO.
55	(32-2)RS,BRR	GRUNDY	39	32
CONTRACT NO. 66K67				
ILLINOIS FED. AID PROJECT				

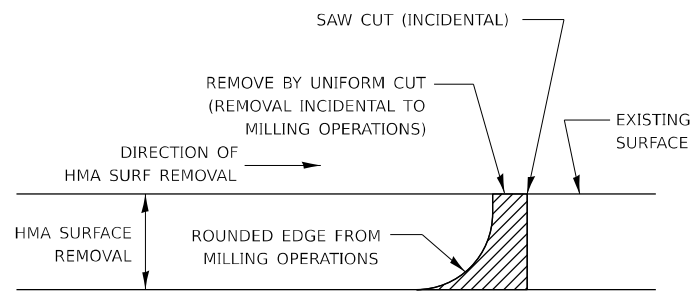


LOCATION	EXISTING CULVERT SIZE	COLLAR		A-BAR	U-BAR	h-BAR	CONC COLLAR	REINFORCEMENT BARS	
		WIDTH	HEIGHT	12	X'	Y'		18	CU YD
466+00	24	42	42	96	33	36	72	0.55	32.1
480+00	24	42	42	96	33	36	72	0.55	32.1
600+00	24	42	42	96	33	36	72	0.55	32.1
724+00	24	42	42	96	33	36	72	0.55	32.1
742+47	24	42	42	96	33	36	72	0.55	32.1
TOTALS		210	210	480	165	180	360	2.75	160.5

COLLAR DETAIL (DIRECT PIPE CULVERT CONNECTION)

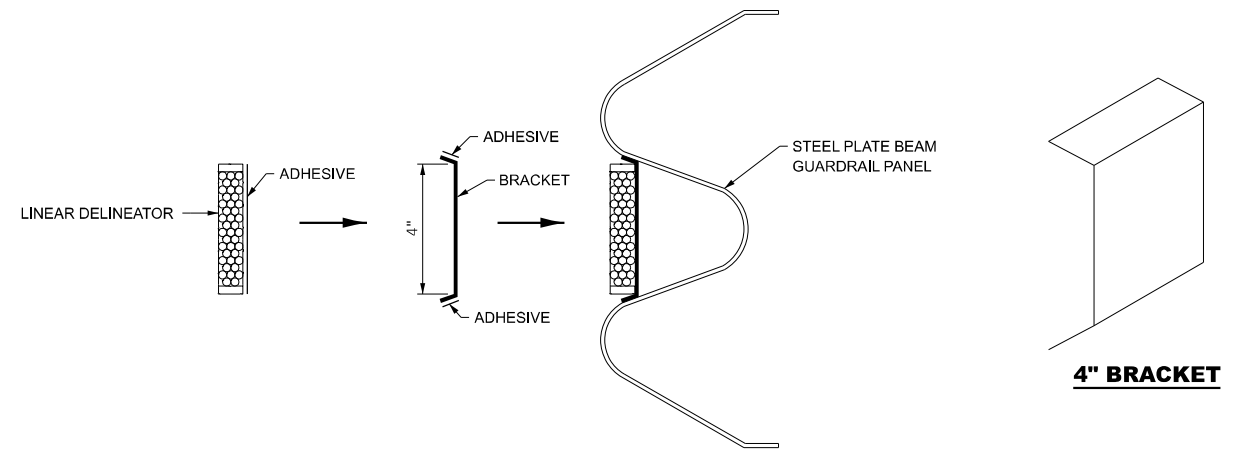


LINEAR DELINEATOR PANELS FOR TEMPORARY CONCRETE BARRIER



NOTE:
WHEN MILLING OPERATIONS PRODUCE A ROUNDED EDGE, THEN A SAW CUT SHALL BE USED TO MANUFACTURE A PERPENDICULAR EDGE AS SHOWN IN THE DETAIL. THE ENGINEER SHALL BE THE SOLE JUDGE CONCERNING THE USE OF THIS DETAIL

HMA BUTT JOINT SAW CUTS



LINEAR DELINEATOR APPLICATION TO STANDARD GALVANIZED GUARDRAIL

LINEATOR DELINEATOR SHALL BE APPLIED ACCORDING TO THE MANUFACTURER'S RECOMMENDATIONS

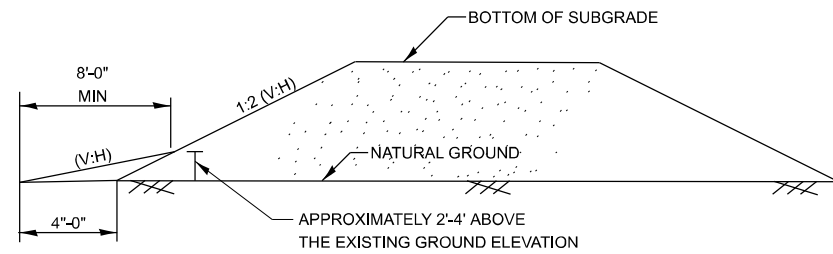
MODEL: DETAIL SHEET 2 (SHEET) FILE NAME: P:\Bids\2023\11\DOT\Documents\DOT Office\District 3\ORD Project\036667\CADD\036667-DETAILS

USER NAME = brandon.cris	DESIGNED -	REVISED -
PLOT SCALE = 0.16666633' / in.	DRAWN -	REVISED -
PLOT DATE = 11/2/2023	CHECKED -	REVISED -
	DATE -	REVISED -

STATE OF ILLINOIS DEPARTMENT OF TRANSPORTATION

DETAILS			
SCALE:	SHEET 2	OF 7	SHEETS
	STA. +_	TO STA. +_	

F.A.I RTE.	SECTION	COUNTY	TOTAL SHEETS	SHEET NO.
55	(32-2)RS,BRR	GRUNDY	39	33
CONTRACT NO. 66K67				
ILLINOIS FED. AID PROJECT				



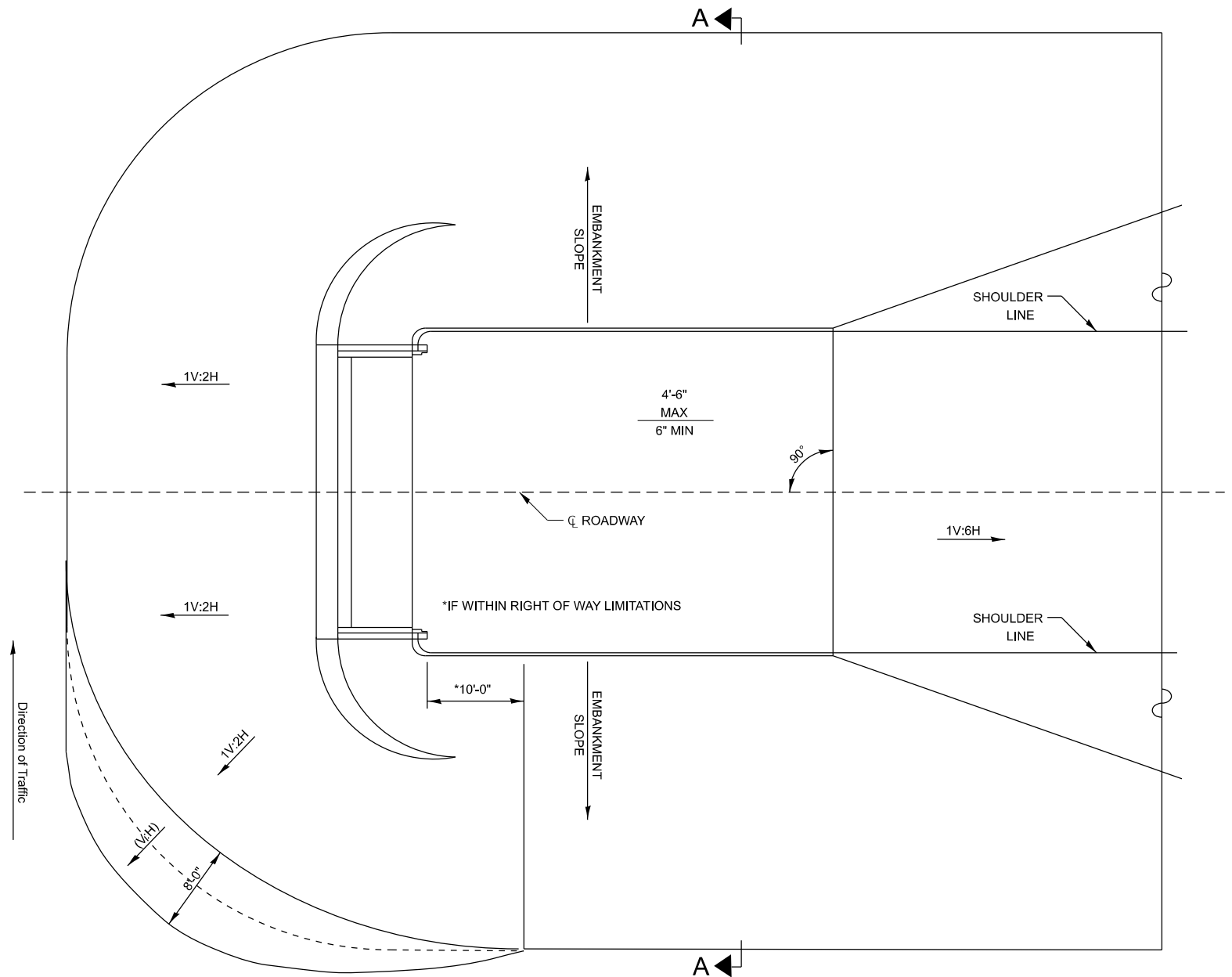
SECTION A-A

NOTES:

- APPLIES TO STRAIGHT OR SKEWED SINGLE STRUCTURES.
- UNDER RESTRICTIVE CONDITIONS, A 1:4 CAN BE USED FOR ANY FACILITY TYPE. SEE FIGURES 3.14.1-1 AND 3.14.1-2 OF THE BRIDGE MANUAL.
- PER BDE 38-4.C, THE RECOMMENDED TRANSVERSE SLOPES ARE AS FOLLOWS.

TYPE OF FACILITY	DESIRABLE (V:H)	ACCEPTABLE (V:H)
FREEWAYS	1:10	1:6
RURAL NON-FREEWAYS*	1:10	1:6
URBAN NON-FREEWAYS*	1:6	1:4
URBAN NON-FREEWAYS**	1:6	1:4

* DESIGN SPEED (V) GREATER THAN OR EQUAL TO 50 MPH.
 ** DESIGN SPEED (V) LESS THAN OR EQUAL TO 45 MPH.



EMBAKMENT CONE DETAIL

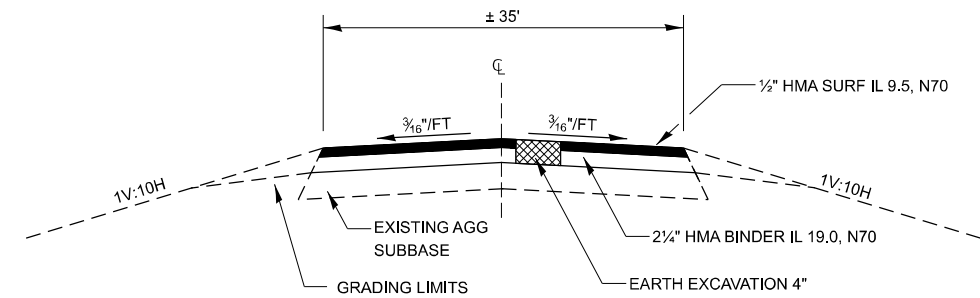
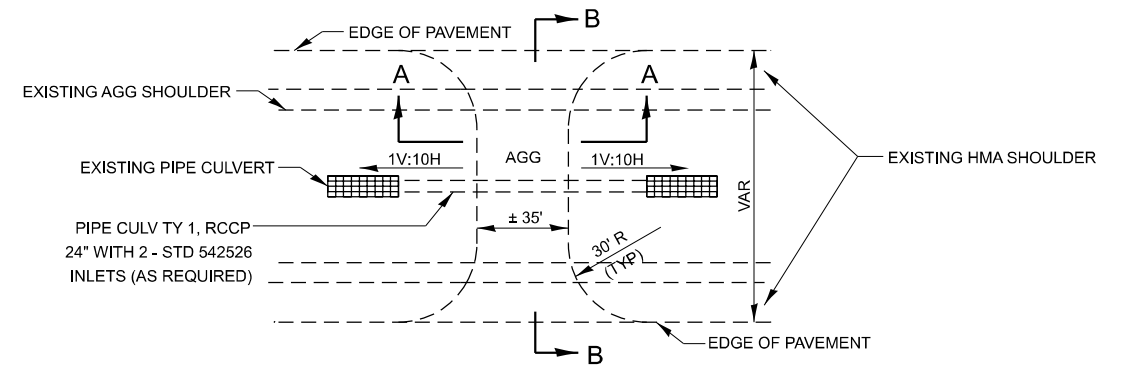
MODEL: DETAIL SHEET 001 (Sheet)
 FILE NAME: P:\Bids\2023\11\11\DOT\Documents\DOT Office\District 3\ORD Project\66K67\CADD\Drawings\Details\66K67 - DETAILS

USER NAME = brandon.crisis	DESIGNED -	REVISED -
DRAWN -	REVISIONS -	
PLOT SCALE = 0.16666633' / in.	CHECKED -	REVISED -
PLOT DATE = 11/2/2023	DATE -	REVISED -

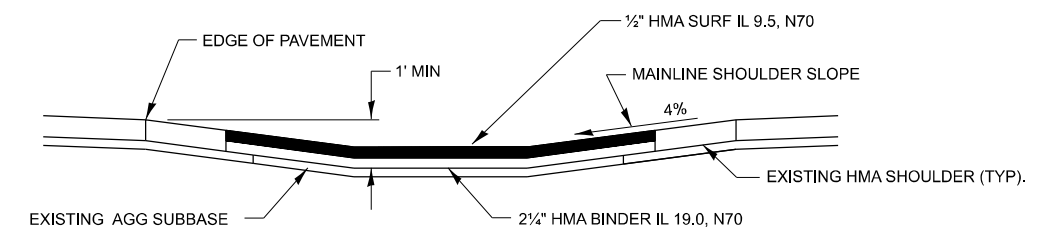
**STATE OF ILLINOIS
 DEPARTMENT OF TRANSPORTATION**

DETAILS			
SCALE:	SHEET 5 OF 7 SHEETS	STA. +_ TO STA. +_	

F.A.I. RTE.	SECTION	COUNTY	TOTAL SHEETS	SHEET NO.
55	(32-2)RS,BRR	GRUNDY	39	36
CONTRACT NO. 66K67				
ILLINOIS FED. AID PROJECT				



SECTION A-A



SECTION B-B

HMA MAINTENANCE CROSSOVER

NOTES:

- 1). EXISTING AGGREGATE MAINTENANCE CROSSOVER TO BE RESURFACED WITH HMA BINDER AND SURFACE.
- 2). EXCAVATE 4" OF EXISTING AGGREGATE CROSSOVER AND REPLACE WITH 2 1/2" OF HMA BINDER IL 19.0, N70 AND 1 1/2" OF HMA SURFACE IL 9.5, N70.
- 3). EXCAVATED AGGREGATE SHALL REMAIN ON SITE AND USED FOR GRADING AROUND THE EDGE OF THE CROSSOVER AND ON EXISTING I-55 AGGREGATE SHOULDERS AS DIRECTED BY THE ENGINEER.

**STATE OF ILLINOIS
DEPARTMENT OF TRANSPORTATION**

DETAILS

SCALE: 1"=50'

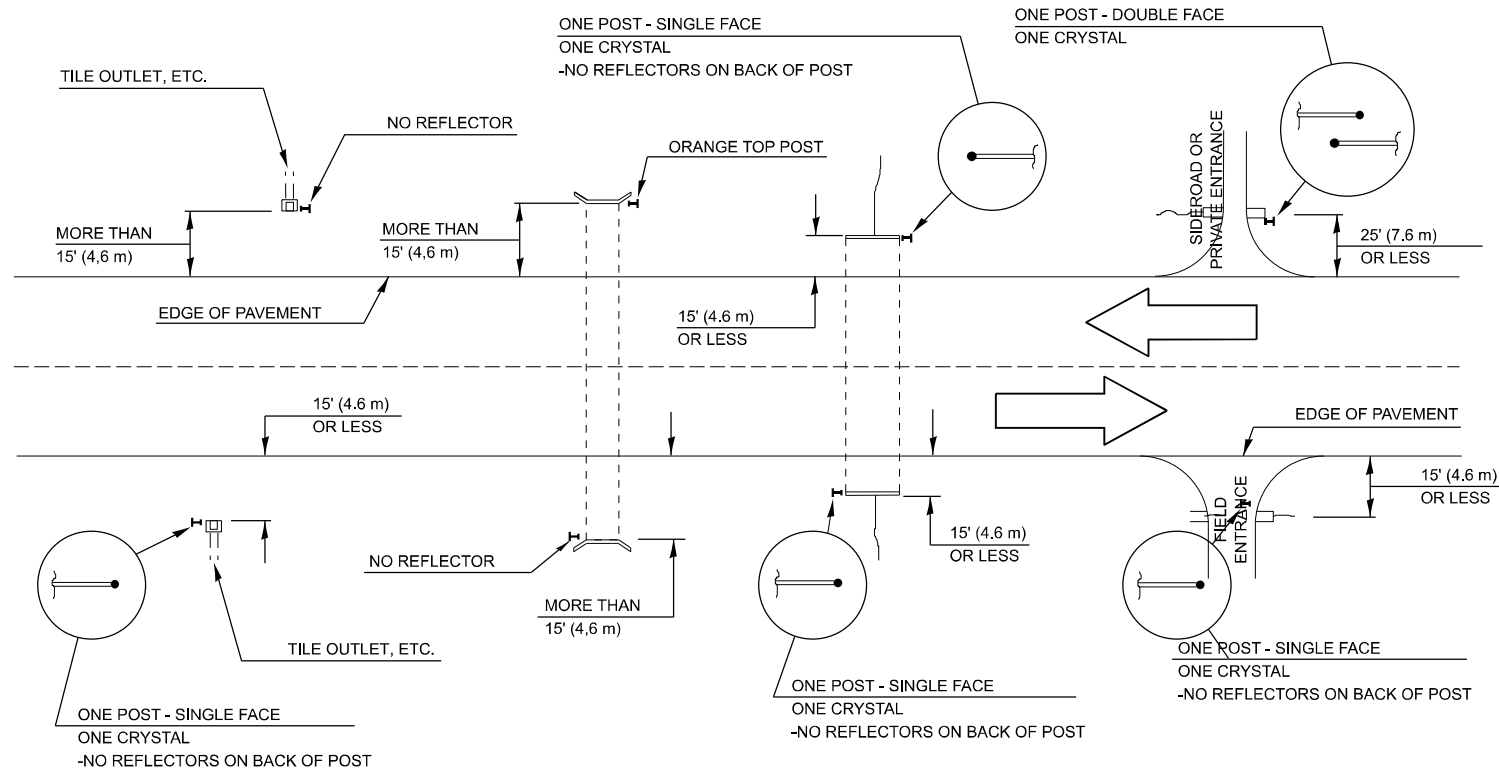
SHEET 6 OF 7 SHEETS STA. ___+___ TO STA. ___+___

F.A.I RTE.	SECTION	COUNTY	TOTAL SHEETS	SHEET NO.
55	(32-2)RS,BRR	GRUNDY	39	37
CONTRACT NO. 66K67				
ILLINOIS FED. AID PROJECT				

MODEL: Detail SHEET 007 (Sheet)
 FILE NAME: c:\p\work\brandon.criss@illinois.gov\0854423\0366K67 - DETAILS.dgn

USER NAME = brandon.criss	DESIGNED -	REVISED -
PLOT SCALE = 0.16666633' / in.	DRAWN -	REVISED -
PLOT DATE = 11/2/2023	CHECKED -	REVISED -
	DATE -	REVISED -

IDENTIFICATION OF ROADSIDE HAZARDS FOR TWO-LANE ROADWAYS

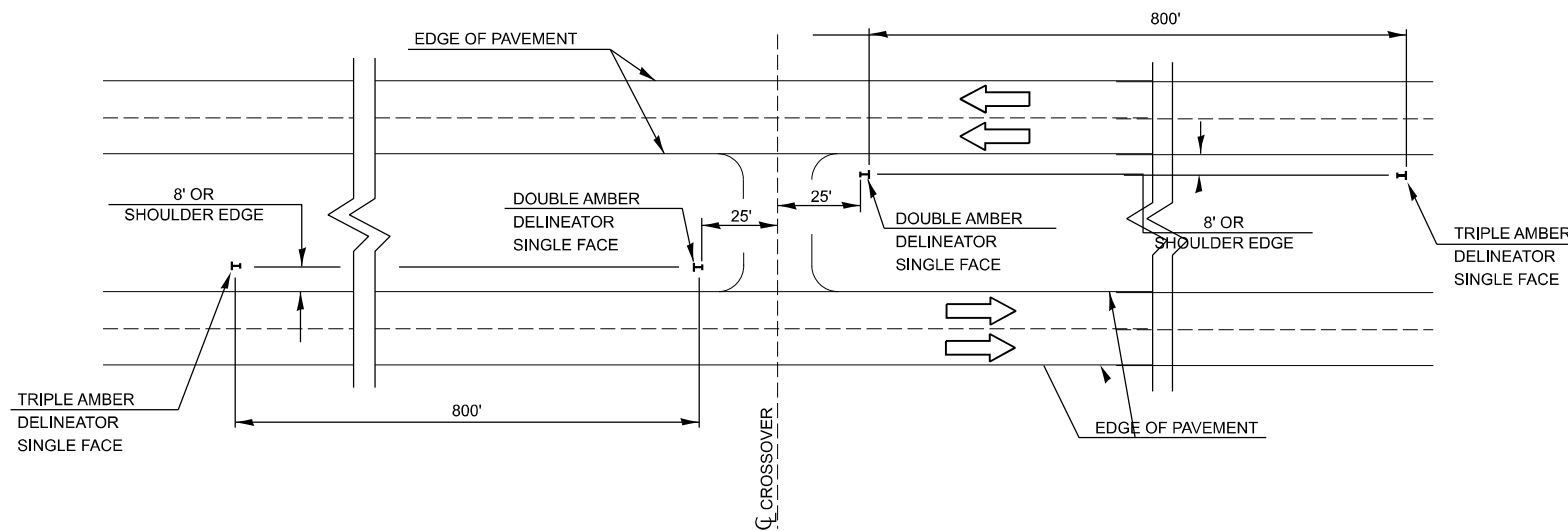


BILL OF MATERIALS

ROADSIDE HAZARD DELINEATOR						
STRUCTURE NUMBER	SIDE	STRUCTURE CENTERLINE STATION	SINGLE FACE EACH	DOUBLE FACE EACH	NO REFLECTOR N/A	TOTAL DELINEATORS EACH
4439	SB	466+00	2			2
4440	SB	480+00	1			1
032-2004	SB	500+76	1			1
032-2516	NB/SB	517+54	2	1		3
4443	NB/SB	535+00	2	1		3
4444	NB/SB	546+00	2	1		3
032-2517	NB/SB	555+50			N/A	0
4446	ETO	575+90		2		2
4447	NB/SB	576+00	2	1		3
4448	NB/SB	600+00	2	1		3
4449	NB/SB	619+00	2	1		3
032-0078	NB/SB	626+00			N/A	0
032-2518	NB/SB	632+94	2	1		3
4456	NB/SB	640+00	2	1		3
032-2519	NB/SB	655+79			N/A	0
032-2611	NB/SB	672+40			N/A	0
4460	NB/SB	687+00	2	1		3
4461	ETO	704+00		2		2
032-2520	SB	713+62	1			1
4462	MEDIAN	714+00		1		1
4463	NB/SB	724+00	2	1		3
4464	NB/SB	742+47	2	1		3
TOTAL						40

MEDIAN DELINEATORS AT CROSSOVER

(FOR INTERSTATES, EXPRESSWAYS, DUAL HIGHWAYS)



NOTE:

DELINEATORS FOR ROADSIDE HAZARDS SHALL ONLY BE PLACED AT LOCATIONS WHERE THERE IS NO GUARDRAIL, OR OTHER PERMANENT BARRIER, ON THE SAME SIDE OF THE ROAD AS THE HAZZARD.

DELINEATORS FOR ROADSIDE HAZARDS SHALL ONLY BE PLACED AT LOCATIONS WHERE DELINEATORS ARE NOT IN PLACE ALONG THE EDGE OF SHOULDER.

EACH POST SHALL BE CONSIDERED AS ONE DELINEATOR FOR PAYMENT, REGARDLESS OF THE NUMBER OF DELINEATORS ATTACHED TO IT.

FOR ONE-WAY AND INTERSTATE ROADWAYS THE APPLICATION SHALL BE SIMILAR WITH DELINEATORS PLACED ON THE TRAFFIC APPROACH SIDE OF HAZARDS AND OBJECTS, ONLY SINGLE FACE DELINEATORS WILL BE REQUIRED ON ONE-WAY ROADWAYS, CRYSTAL ON THE RIGHT SIDE AND AMBER ON THE LEFT SIDE.

FOR OTHER DELINEATOR APPLICATIONS, REFER TO HIGHWAY STANDARD 635001.

DESIGNER NOTE:

REMOTE OPENING FOR FILL CLOSURE.

MODEL: Detail SHEET 8 (Sheet)
FILE NAME: c:\p\work\brandon.crisss@illinois.gov\0854423\0366K67 - DETAILS.dgn

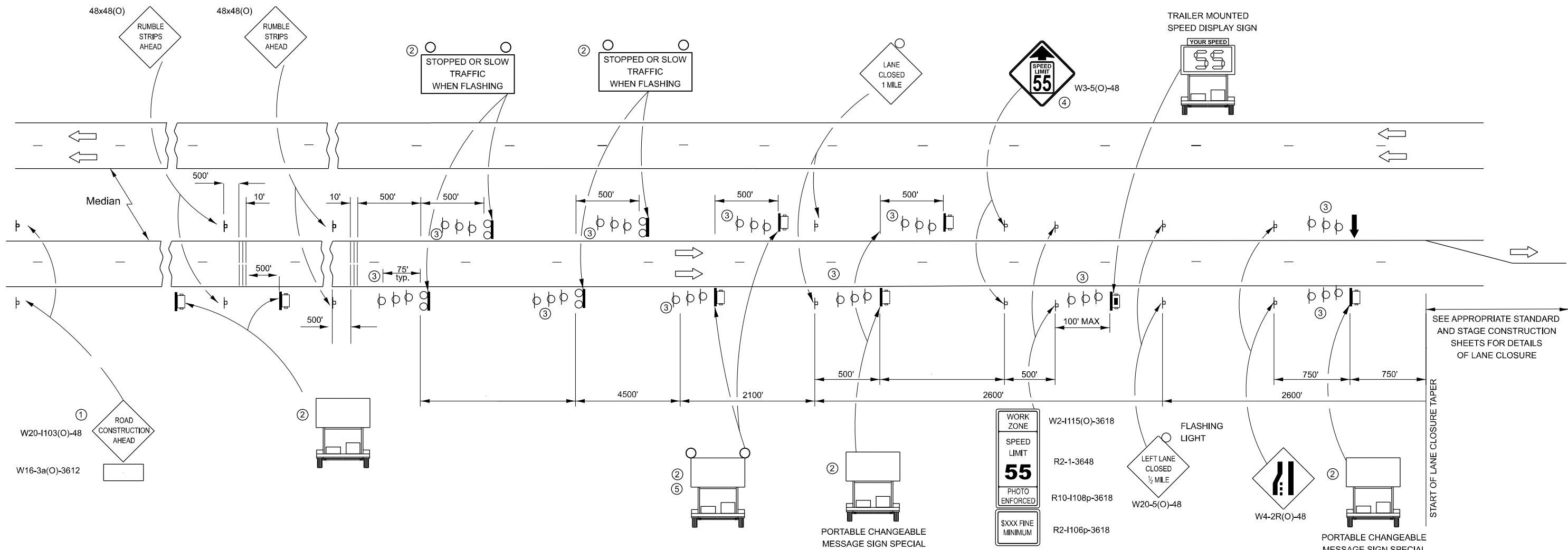
USER NAME = brandon.crisss	DESIGNED -	REVISED -
PLOT SCALE = 0.16666833' / in.	DRAWN -	REVISED -
PLOT DATE = 11/2/2023	CHECKED -	REVISED -
	DATE -	REVISED -

STATE OF ILLINOIS
DEPARTMENT OF TRANSPORTATION

DETAILS

SCALE: 1"=50' SHEET 7 OF 7 SHEETS STA. ___+___ TO STA. ___+___

F.A.I RTE.	SECTION	COUNTY	TOTAL SHEETS	SHEET NO.
55	(32-2)RS,BRR	GRUNDY	39	38
CONTRACT NO. 66K67				
ILLINOIS FED. AID PROJECT				

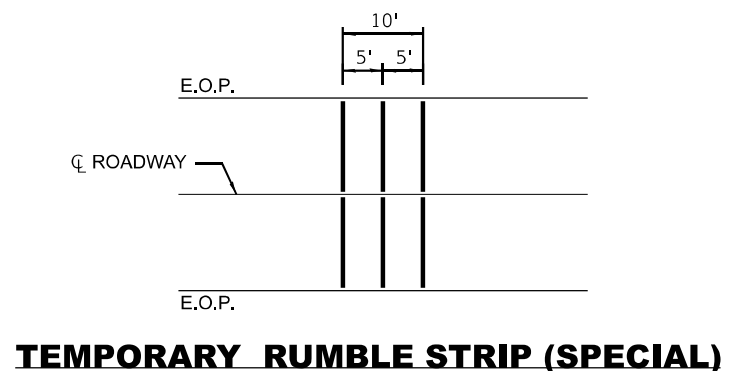


NOTES:

- ① THE ROAD CONSTRUCTION AHEAD SIGN SHALL BE LOCATED 5 MILES IN ADVANCE OF THE PROJECT LIMITS.
- ② UNIT TO BE PAID FOR SEPARATELY. TO BE PLACED OUTSIDE OF EXISTING PAVED SHOULDER. ANY REQUIRED EARTHWORK INCLUDED IN THE COST OF THE UNIT.
- ③ THREE, TYPE II BARRICADES, DRUMS, OR VERTICAL BARRICADES AT 25' CENTERS.
- ④ THIS SIGN SHALL ONLY BE USED IF THE EXISTING SPEED LIMIT IS GREATER THAN 65 MPH.
- ⑤ WHEN SHOWN, PORTABLE CHANGEABLE MESSAGE SIGN SPECIAL SHALL HAVE EQUIVALENT FLASHING BEACONS AS REAL TIME TRAFFIC CONTROL SIGNING. COST INCLUDED IN PORTABLE CHANGEABLE MESSAGE SIGN SPECIAL.

LEGEND:

- ↓ ARROW BOARD
- ☐ PORTABLE CHANGEABLE MESSAGE SIGN SPECIAL (PCMS)
- ⊥ SIGN
- ⊙ REAL-TIME TRAFFIC CONTROL SIGNING
- ⊙ TYPE II BARRICADE, DRUM, OR VERTICAL BARRICADE WITH MONODIRECTIONAL FLASHING LIGHT.
- ▨ TEMPORARY RUMBLE STRIPS (SPECIAL), SEE DETAIL & SPECIAL PROVISION
- ☑ SPEED DISPLAY TRAILER



TEMPORARY RUMBLE STRIP (SPECIAL)

GENERAL NOTE:

THIS STANDARD IS USED WHERE A LANE CLOSURE IS IN PLACE LONGER THAN ONE CONSECUTIVE WEEK OR INCLUDING A WEEKEND OR HOLIDAY AS DESCRIBED IN KEEPING ROADS OPEN TO TRAFFIC.

THE FIRST TWO SIGNS ARE STATIONARY. THE OTHER SIGNS, ARROWBOARDS AND MESSAGE BOARDS SHALL BE MOVED AS NECESSARY TO MAINTAIN THE REQUIRED DISTANCE FROM THE START OF THE LANE CLOSURE TAPER(S).

SEE SPECIAL PROVISIONS FOR SMART TRAFFIC MONITORING SYSTEM, PORTABLE CHANGEABLE MESSAGE SIGN SPECIAL AND CONTROL OF WORK.

THIS DETAIL APPLIES TO BOTH NB AND SB APPROACHES TO THE WORK ZONE.

WHEN THE RIGHT LANE IS CLOSED, RIGHT LANE CLOSED SIGNS SHALL BE SUBSTITUTED FOR LEFT LANE CLOSED SIGNS.

WHEN EXISTING SIGNS, POLES, AND OTHER ITEMS CONFLICT WITH LOCATING THE EQUIPMENT SHOWN, THE CONTRACTOR SHALL COORDINATE WITH THE ENGINEER TO DECONFLICT EQUIPMENT PLACEMENT.

ALL ORANGE SIGN SHEETING SHALL BE FLOURESCENT ORANGE MATERIAL.

MODEL - Detail Sheet 6 (Sheet)
FILE NAME: c:\p\work\wtd\brandon.criss@illinois.gov\0854423\0366K67 - DETAILS.dgn

USER NAME = brandon.criss	DESIGNED -	REVISED -
DRAWN -	REVISED -	
PLOT SCALE = 0.16666833' / in.	CHECKED -	REVISED -
PLOT DATE = 11/2/2023	DATE -	REVISED -

**STATE OF ILLINOIS
DEPARTMENT OF TRANSPORTATION**

SMART WORK ZONE DETAIL			
SCALE: 1"=50'	SHEET 1	OF 1 SHEETS	STA. TO STA.

F.A.I. RTE.	SECTION	COUNTY	TOTAL SHEETS	SHEET NO.
55	(32-2)RS,BRR	GRUNDY	39	39
CONTRACT NO. 66K67				
ILLINOIS FED. AID PROJECT				