

STATE OF ILLINOIS  
DEPARTMENT OF TRANSPORTATION

F.A.I. RTE.	SECTION	COUNTY	TOTAL SHEETS	SHEET NO.
24/57	D9 WEED SPRAY 2024-2	VARIOUS	12	1
ILLINOIS			CONTRACT NO. 78A49	

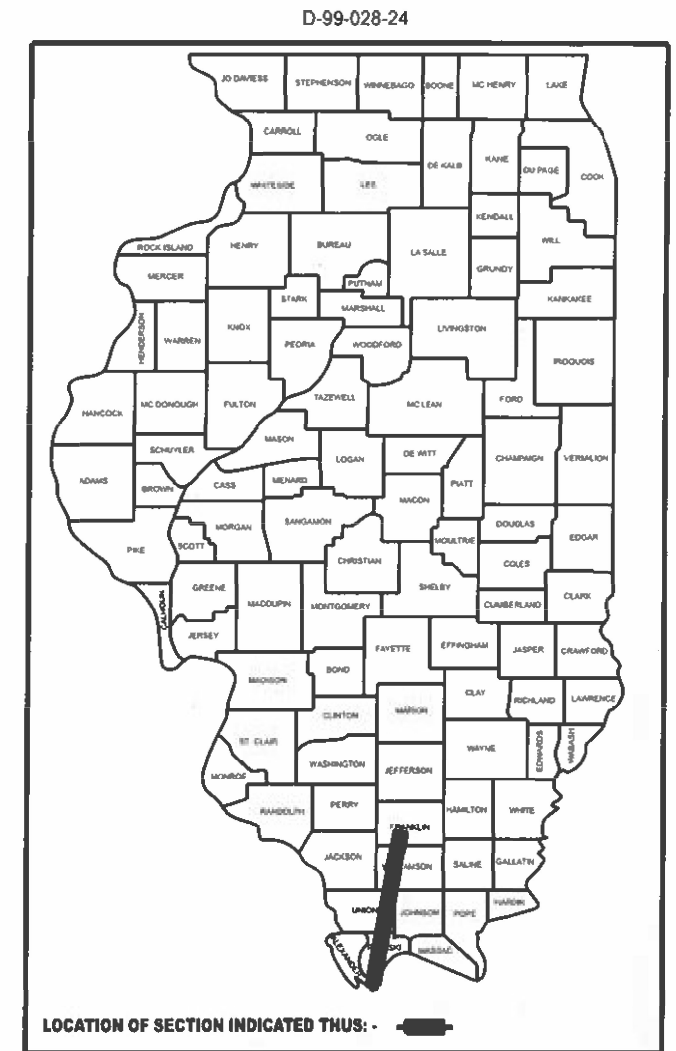
FOR INDEX OF SHEETS, SEE SHEET NO. 3  
FOR SUMMARY OF QUANTITIES, SEE SHEET NO. 4

# PROPOSED HIGHWAY PLANS

FAI 24 (I-24) & FAI 57 (I-57)  
SECTION D9 WEED SPRAY 2024-2

WEED SPRAYING  
VARIOUS COUNTIES

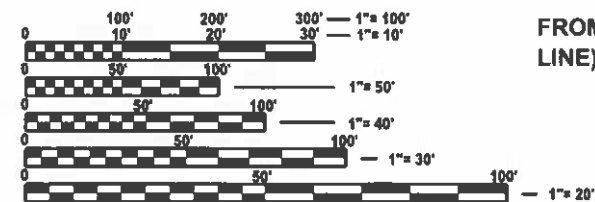
C-99-057-24



DESIGN DESIGNATION : N/A

COORDINATE SYSTEM : N/A

POSTED SPEED : 70 MPH



FULL SIZE PLANS HAVE BEEN PREPARED USING STANDARD ENGINEERING SCALES. REDUCED SIZED PLANS WILL NOT CONFORM TO STANDARD SCALES. IN MAKING MEASUREMENTS ON REDUCED PLANS, THE ABOVE SCALES MAY BE USED.

J.U.L.I.E.  
JOINT UTILITY LOCATION INFORMATION FOR EXCAVATION  
1-800-892-0123  
OR 811

LOCATION # 4 I-57  
FROM EXIT 44 WITH INFIELDS TO MP 62.1  
(WILLIAMSON / FRANKLIN COUNTY LINE)

LOCATION # 3 I-57  
FROM MP 22 (PULASKI / UNION COUNTY  
LINE) NORTH TO EXIT 30 WITH INFIELDS

LOCATION # 2 I-57  
FROM MP 4.3 NORTH TO MP 22  
(PULASKI / UNION COUNTY LINE)

LOCATION # 6 I-57  
FROM MP 62.1 TO EXIT 65  
WITH INFIELDS

LOCATION # 5 I-24  
FROM MP 0.0 TO MP 1.6  
(JOHNSON / WILLIAMSON COUNTY LINE)

LOCATION # 1 I-57  
FROM MP 1.0 NORTH TO MP 4.3  
(ALEXANDER / PULASKI COUNTY LINE)

PROJECT ENGINEER: VALERIE ROLLA - (618) 351-5214  
PROJECT MANAGER: JOHN A. BRANDON - (618) 351-5319

CONTRACT NO. 78A49

STATE OF ILLINOIS  
DEPARTMENT OF TRANSPORTATION

SUBMITTED Oct 30 2023  
Kirk H. Brown  
REGIONAL ENGINEER

December 8, 2023  
SAE.A. ETS  
ENGINEER OF DESIGN AND ENVIRONMENT

December 8, 2023  
Stephen M. Smith  
DIRECTOR OF HIGHWAYS PROJECT IMPLEMENTATION

PRINTED BY THE AUTHORITY  
OF THE STATE OF ILLINOIS

MODEL: Signature [Sheet]  
FILE NAME: c:\pwworkspace\john.a.brandon\sk052557\01078449-SHA-Cover.dwg

Prepared By: Charles Stein  
DISTRICT STUDIES & PLANS ENGINEER

Examined By: Nancy Lee  
DISTRICT LAND ACQUISITION ENGINEER

Examined By: Carrie Hill  
DISTRICT PROGRAM DEVELOPMENT ENGINEER

Examined By: [Signature]  
DISTRICT OPERATIONS ENGINEER

Examined By: Douglas J. Heiland  
DISTRICT PROJECT IMPLEMENTATION ENGINEER

Examined By: Douglas J. Heiland  
DISTRICT CONSTRUCTION ENGINEER

Examined By: Aan Hage  
DISTRICT MATERIALS ENGINEER

USER NAME = john.a.brandon	DESIGNED -	REVISED -
PLOT SCALE = \$Scales	DRAWN -	REVISED -
PLOT DATE = 10/26/2023	CHECKED -	REVISED -
	DATE -	REVISED -

STATE OF ILLINOIS  
DEPARTMENT OF TRANSPORTATION

SIGNATURE SHEET

SCALE: 1"=50'	SHEET 1	OF 1	SHEETS	STA.	TO STA.	F.A.I. RTE. 24/57	SECTION D9 WEED SPRAY 2024-2	COUNTY VARIOUS	TOTAL SHEETS 12	SHEET NO. 2
CONTRACT NO. 78A49										
ILLINOIS FED AID PROJECT										

## INDEX OF SHEETS

SHEET NO	DESCRIPTION
1	COVER SHEET
2	SIGNATURE SHEET
3	INDEX OF SHEETS AND HIGHWAY STANDARDS
4	SUMMARY OF QUANTITIES
5	SCHEDULE OF QUANTITIES
6	SCHEDULE OF ROUTES AND SPRAY MIXTURES
7	ALEXANDER COUNTY LOCATION MAP
8	PULASKI COUNTY LOCATION MAP
9	UNION COUNTY LOCATION MAP
10	WILLIAMSON COUNTY LOCATION MAP I-57
11	WILLIAMSON COUNTY LOCATION MAP I-24
12	FRANKLIN COUNTY LOCATION MAP

## HIGHWAY STANDARDS

000001-08 STANDARD SYMBOLS, ABBREVIATIONS AND PATTERNS  
 001006 \_ DECIMAL OF AN INCH AND OF A FOOT  
 701101-05 OFFRDOP-MULTILN-LESSTHAN 15FTTOEOP  
 701106-02 OFFRDOP-MULTILN-MORETHAN15FTAWAY  
 701426-09 LNCLOSUREMULTILN-INTERMITTANTORMOVINGOP45MPHORMORE  
 701901-09 TRAFCNTRLDEVICES

REV. - MS

MODEL: Index of Sheets and Highway Standards-1 (Sheet)  
 FILE NAME: C:\work\pandoc\transp\092523\03072023\IllIndex.dgn

USER NAME	John a brandon	DESIGNED	-	REVISED	-
		DRAWN	-	REVISED	-
PLOT SCALE	1:SCALE\$	CHECKED	-	REVISED	-
PLOT DATE	10/26/2023	DATE	-	REVISED	-

**STATE OF ILLINOIS  
 DEPARTMENT OF TRANSPORTATION**

**INDEX OF SHEETS  
 AND HIGHWAY STANDARDS**

SCALE 1"=50' SHEET OF SHEETS STA TO STA

F.A.I RTE	SECTION	COUNTY	TOTAL SHEETS	SHEET NO
24/57	D9 WEED SPRAY 2024-2	VARIOUS	12	3
				CONTRACT NO. 78A49
ILLINOIS FED AID PROJECT				

## SUMMARY OF QUANTITIES

COUNTY:	VARIOUS
ROUTE:	FAI 57/FAI 24 I-57/I-24
FUNDING:	100% STATE
LOCATION:	RURAL
	<b>ROADWAY</b>
	<b>0031</b>

CODE NUMBER	ITEM DESCRIPTION	UNIT	TOTAL QUANTITY	
67100100	MOBILIZATION	L SUM	1	1
X0323584	OUTRIDER	OUNCE	2,480	2,480
X0325681	NON-IONIC SURFACTANT	GALLON	206.6	206.6

MODEL: Summary of Quantities-1 (Sheet)  
 FILE NAME: \\paw-wk\pawedc\br\adon\0926570\09278A49-SINC-SOC.dgn

USER NAME = john.a.brandon	DESIGNED -	REVISED -
	DRAWN -	REVISED -
PLOT SCALE = 1/8"=1'	CHECKED -	REVISED -
PLOT DATE = 10/27/2023	DATE -	REVISED -

**STATE OF ILLINOIS  
DEPARTMENT OF TRANSPORTATION**

### SUMMARY OF QUANTITIES

SCALE: 1"=50'    SHEET    OF    SHEETS    STA.    TO STA.

F.A.I. RTE.	SECTION	COUNTY	TOTAL SHEETS	SHEET NO.
24/57	D9 WEED SPRAY 2024-2	VARIOUS	12	4
CONTRACT NO. 78A49				
ILLINOIS FED AID PROJECT				

## SCHEDULE OF QUANTITIES

LOCATION	MARKED ROUTE	COUNTY	ESTIMATED ACRES	SURFACTANT	OUTRIDER
				GALLONS	OUNCES
1	FAI 57 NB	ALEXANDER	48.5	6.1	73
	FAI 57 SB	ALEXANDER	48.5	6.1	73
2	FAI 57 NB	PULASKI	268	33.5	402
	FAI 57 SB	PULASKI	268	33.5	402
3	FAI 57 NB	UNION	210	26.3	315
	FAI 57 SB	UNION	210	26.3	315
5	FAI 57 NB	WILLIAMSON	160	20.0	240
	FAI 57 SB	WILLIAMSON	160	20.0	240
5	FAI 24 EB	WILLIAMSON	20	2.5	30
	FAI 24 WB	WILLIAMSON	20	2.5	30
6	FAI 57 NB	FRANKLIN	120	15.0	180
	FAI 57 SB	FRANKLIN	120	15.0	180
<b>PROJECT TOTALS</b>				<b>206.6</b>	<b>2480</b>

MODEL: Schedule of Quantities [Sheet]  
 FILE NAME: C:\pwworkspace\arab\project\24092527\09272449-Shed-Schedules of Quantities

USER NAME	john a brandon	DESIGNED	-
		DRAWN	-
PLOT SCALE	1:SCALE5	CHECKED	-
PLOT DATE	10/27/2023	DATE	-

**STATE OF ILLINOIS**  
**DEPARTMENT OF TRANSPORTATION**

<b>SCHEDULE OF QUANTITIES</b>			
SCALE	1"=50'	SHEET	OF SHEETS
		STA.	TO STA.

F.A.I. RTE.	SECTION	COUNTY	TOTAL SHEETS	SHEET NO.
24/57	D9 WEED SPRAY 2024-2	VARIOUS	12	5
CONTRACT NO. 78A49				
ILLINOIS FED AID PROJECT				

## SCHEDULE OF ROUTES

LOCATION	COUNTY	MARKED ROUTE
1	ALEXANDER	INTERSTATE 57 FROM MP 1.0 TO MP 4.3 (ALEXANDER/PULASKI COUNTY LINE)
2	PULASKI	INTERSTATE 57 FROM MP 4.3 NORTH TO MP 22
3	UNION	INTERSTATE 57 FROM MP 22 (PULASKI/UNION COUNTY LINE) EXIT 30 WITH INFIELDS
4	WILLIAMSON	INTERSTATE 57 FROM EXIT 44 WITH INFIELDS TO MP 62.1 (FRANKLIN/WILLIAMSON CO. LINE)
5	WILLIAMSON	INTERSTATE 24 FROM MP 0 TO MP 1.6 (JOHNSON/WILLIAMSON COUNTY LINE)
6	FRANKLIN	INTERSTATE 57 FROM MP 62.1 TO EXIT 65 WITH INFIELDS

## ESTIMATE OF TOTAL MATERIALS FOR SPRAY

MATERIAL	QUANTITY
HERBICIDE OTRIDER	2479.5 OUNCES
SURFACTANT	206.6 GALLONS
CLEAN WATER	82,650 GALLONS

## SPRAY MIXTURE

OTRIDER MIXTURE	
OTRIDER HERBICIDE	1.5 OZ. OF PRODUCT/ACRE
SURFACTANT	16.0 OZ OF PRODUCT/ACRE
CLEAN WATER	50 GALLONS/ACRE

MODEL: Schedule of Routes and Spray Mixtures (Sheet)  
FILE NAME: c:\pw\wep\p\brandon\092523\0928A49-SHE-Schedules of Routes and Spray Mixtures.dgn

USER NAME * john.a.brandon	DESIGNED -	REVISED -
	DRAWN -	REVISED -
PLOT SCALE * \$SCALE\$	CHECKED -	REVISED -
PLOT DATE * 10/20/2023	DATE -	REVISED -

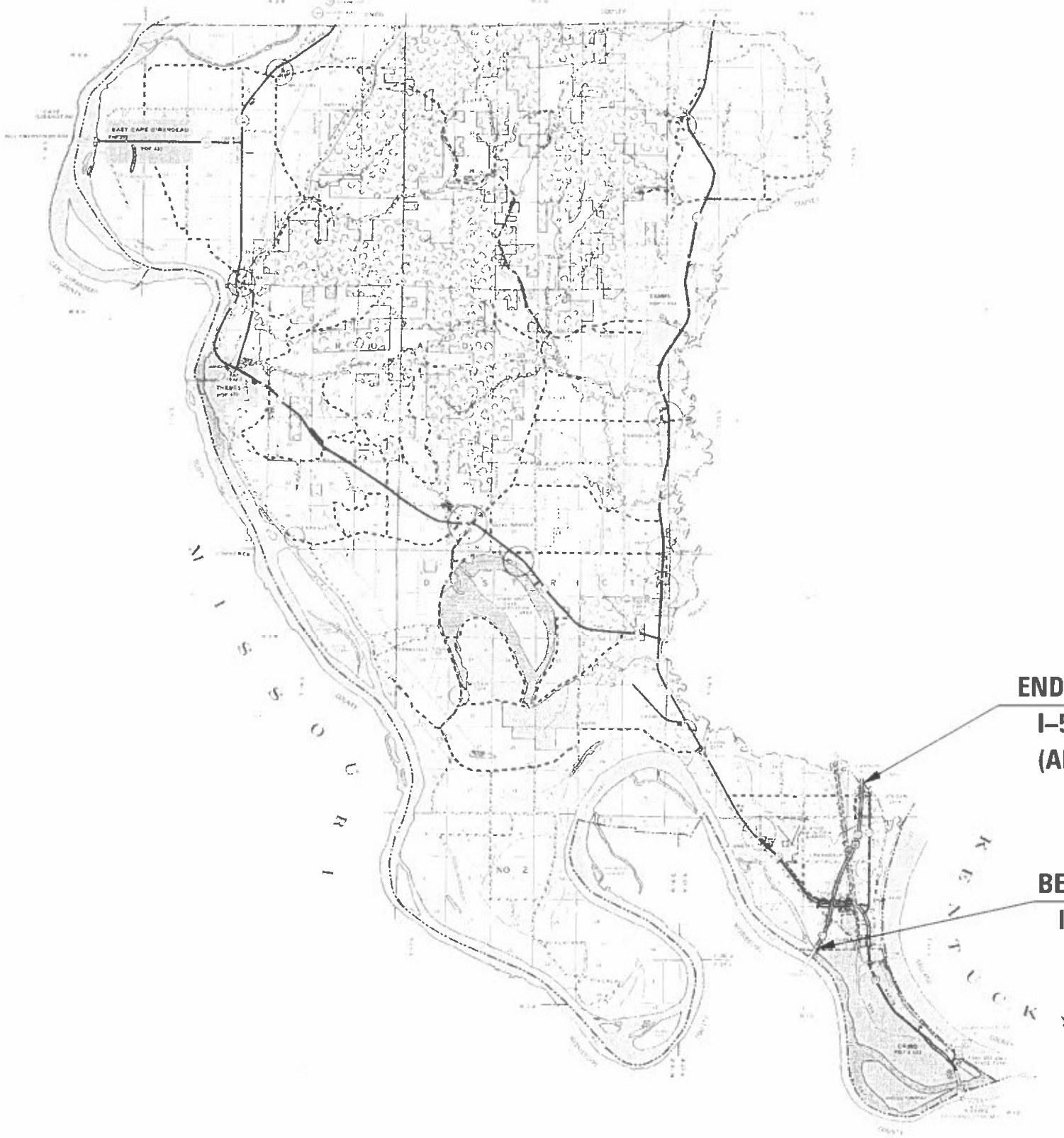
**STATE OF ILLINOIS  
DEPARTMENT OF TRANSPORTATION**

**SCHEDULE OF ROUTES  
AND SPRAY MIXTURES**

SCALE: 1"=50'    SHEET    OF    SHEETS    STA.    TO STA.

F.A.I. RTE.	SECTION	COUNTY	TOTAL SHEETS	SHEET NO.
24/57	D9 WEED SPRAY 2024-2	VARIOUS	12	6
ILLINOIS FED. AID PROJECT    CONTRACT NO. 78A49				

# ALEXANDER COUNTY LOCATION MAP



**END LOCATION #1:**  
**I-57 AT MP 4.3**  
**(ALEXANDER/PULASKI COUNTY LINE)**

**BEGIN LOCATION #1:**  
**I-57 AT MP 1**

MODEL: Alexander Location Map (Sheet)  
 FILE NAME: c:\pwworking\brandonj\ad092557\01\07849-SIN-LOCATION MAPS.dgn

USER NAME = john.a.brandon	DESIGNED -	REVISED -
PILOT SCALE = \$SCALES	DRAWN -	REVISED -
PILOT DATE = 10/27/2023	CHECKED -	REVISED -
	DATE -	REVISED -

**STATE OF ILLINOIS**  
**DEPARTMENT OF TRANSPORTATION**

**ALEXANDER COUNTY LOCATION MAP**

SCALE: 1"=50' SHEET OF 1 SHEETS STA. TO STA.

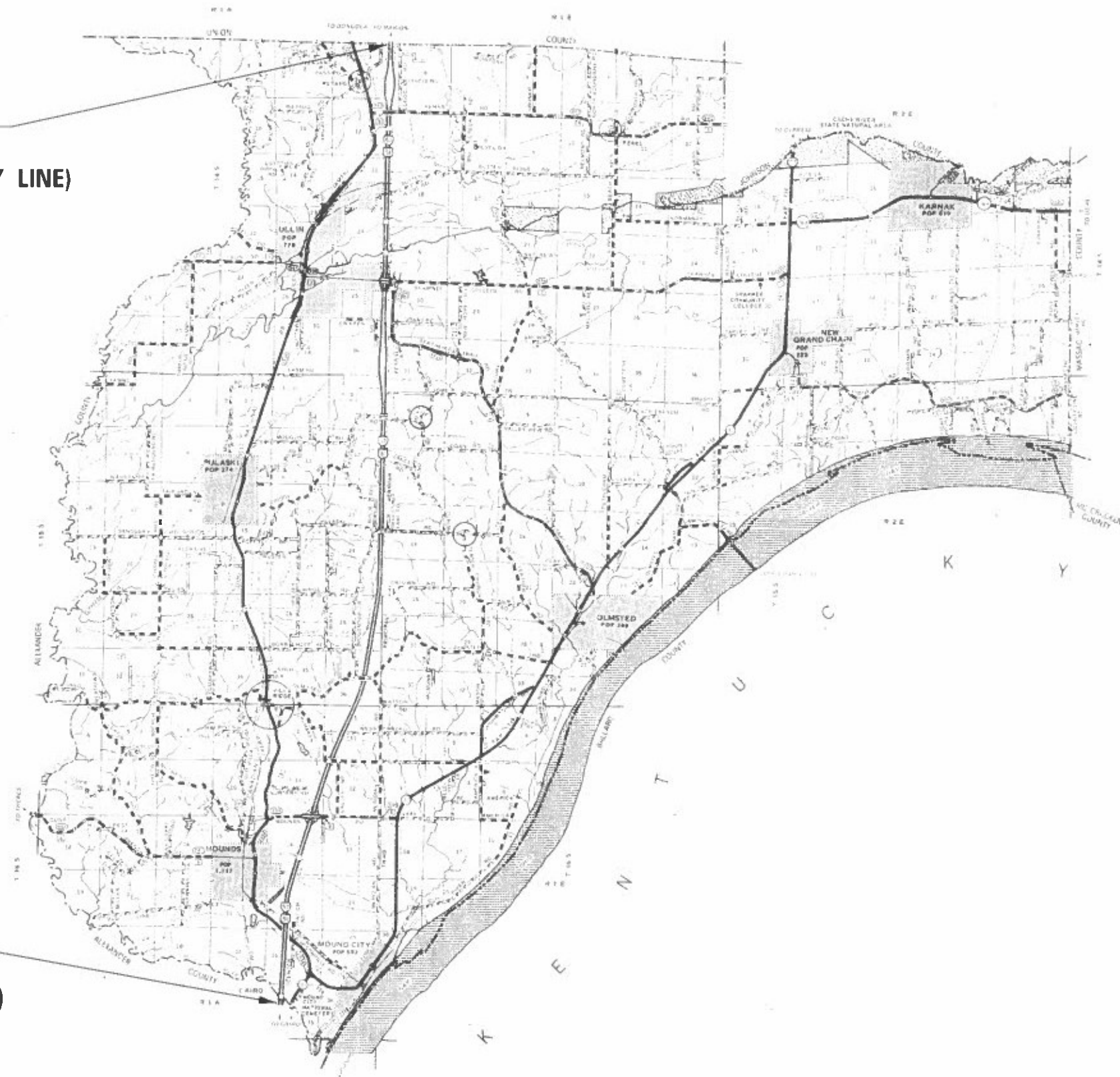
F.A.I. RTE.	SECTION	COUNTY	TOTAL SHEETS	SHEET NO.
24/57	D9 WEED SPRAY 2024-2	VARIOUS	12	7

CONTRACT NO. 78A49

KLINGSTUBBINS

# PULASKI COUNTY LOCATION MAP

**END LOCATION #2**  
**I-57 AT MP 22**  
**(PULASKI/UNION COUNTY LINE)**



**BEGIN LOCATION #2:**  
**I-57 AT MP 4.3**  
**(ALEXANDER/PULASKI COUNTY LINE)**

MODEL: Pulaski County Location Map [Sheet]  
 FILE NAME: G:\work\pmd\2024\10\27\2023\10272023-SH1-LOCATION MAPS.dgn

USER NAME * john a brandon	DESIGNED -	REVISED -
	DRAWN -	REVISED -
PLOT SCALE * 5SCALES	CHECKED -	REVISED -
PLOT DATE * 10/27/2023	DATE -	REVISED -

**STATE OF ILLINOIS**  
**DEPARTMENT OF TRANSPORTATION**

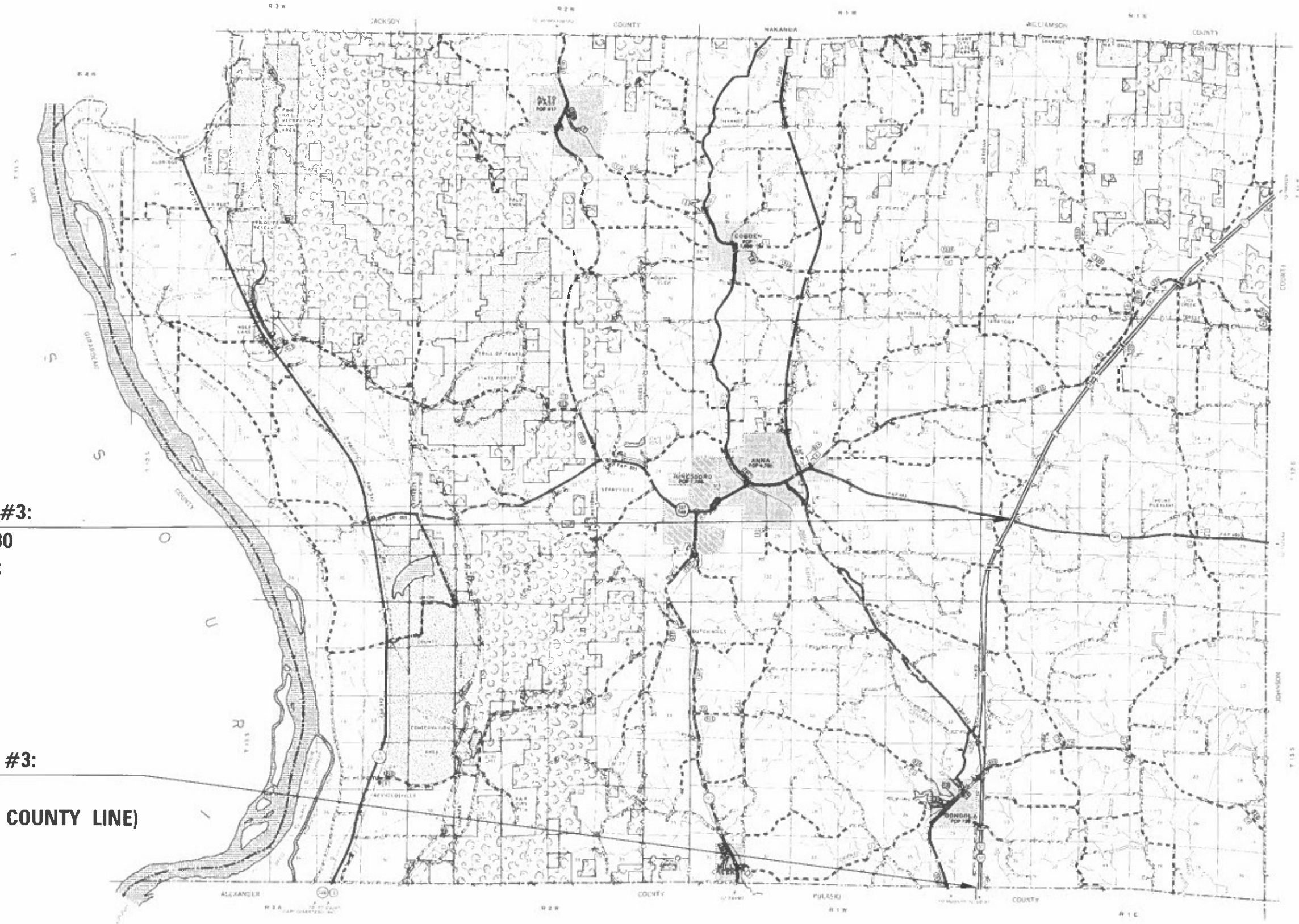
**PULASKI COUNTY LOCATION MAP**

SCALE: 1"=50'    SHEET    OF 1    SHEETS    STA.    TO STA.

F.A.I. RTE.	SECTION	COUNTY	TOTAL SHEETS	SHEET NO.
24/57	D9 WEED SPRAY 2024-2	VARIOUS	12	8
CONTRACT NO. 78A49				
ILLINOIS / FED AID PROJECT				



# UNION COUNTY LOCATION MAP



**END LOCATION #3:**  
**I-57 AT EXIT 30**  
**WITH INFIELDS**

**BEGIN LOCATION #3:**  
**I-57 AT MP 22**  
**(PULASKI/UNION COUNTY LINE)**

MODEL: Union County Location Map [Sheet]  
 FILE NAME: \\pwwork\pwwork\brandond\0955700378A49-Sht-LOCATION MAPS.dwg

USER NAME * john.a.brandon	DESIGNED -	REVISED -
	DRAWN -	REVISED -
PLOT SCALE * \$S\$CALES	CHECKED -	REVISED -
PLOT DATE * 10/27/2023	DATE -	REVISED -

**STATE OF ILLINOIS**  
**DEPARTMENT OF TRANSPORTATION**

**UNION COUNTY LOCATION MAP**

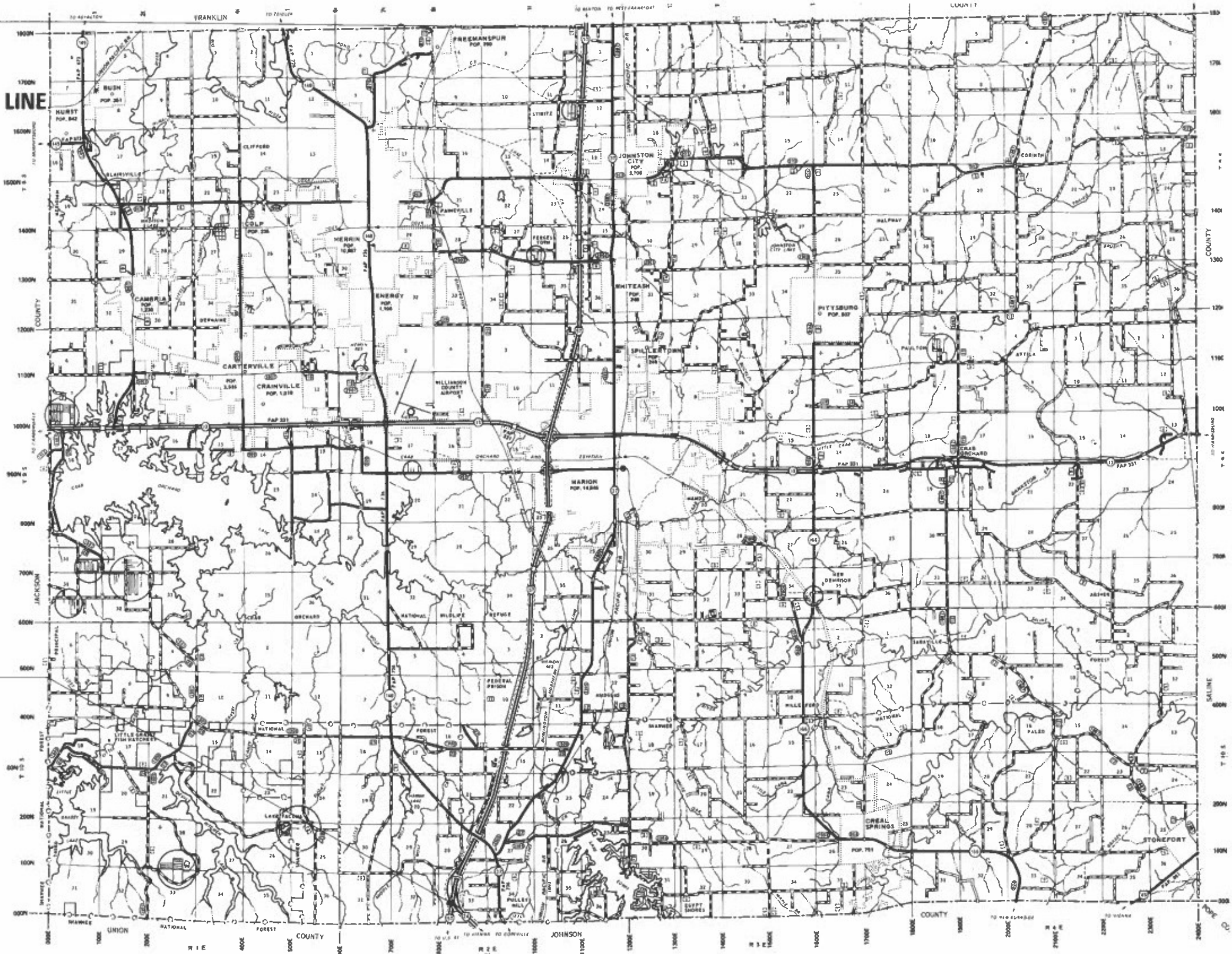
SCALE 1"=50' SHEET OF 1 SHEETS STA TO STA

F.A.I. RTE	SECTION	COUNTY	TOTAL SHEETS	SHEET NO
24/57	D9 WEED SPRAY 2024-2	VARIOUS	12	9
CONTRACT NO. 78A49				
ILLINOIS FED AID PROJECT				

# WILLIAMSON COUNTY LOCATION MAP I-57

**END LOCATION #4:**  
**I-57 AT MP 62.1**  
**WILLIAMSON /**  
**FRANKLIN COUNTY LINE**

**BEGIN LOCATION #4:**  
**I-57 AT EXIT 44**  
**WITH INFIELDS**



MODEL: Williamson County Location Map (Sheet)  
 FILE NAME: C:\pwworkspace\brandon\10025570\DWG\10025570.DWG; Shr. LOCATION MAPS.dwg

USER NAME * john.a.brandon	DESIGNED -	REVISED -
DRAWN -	REVISOR -	
PLOT SCALE = \$SCALE\$	CHECKED -	REVISED -
PLOT DATE = 10/27/2023	DATE -	REVISED -

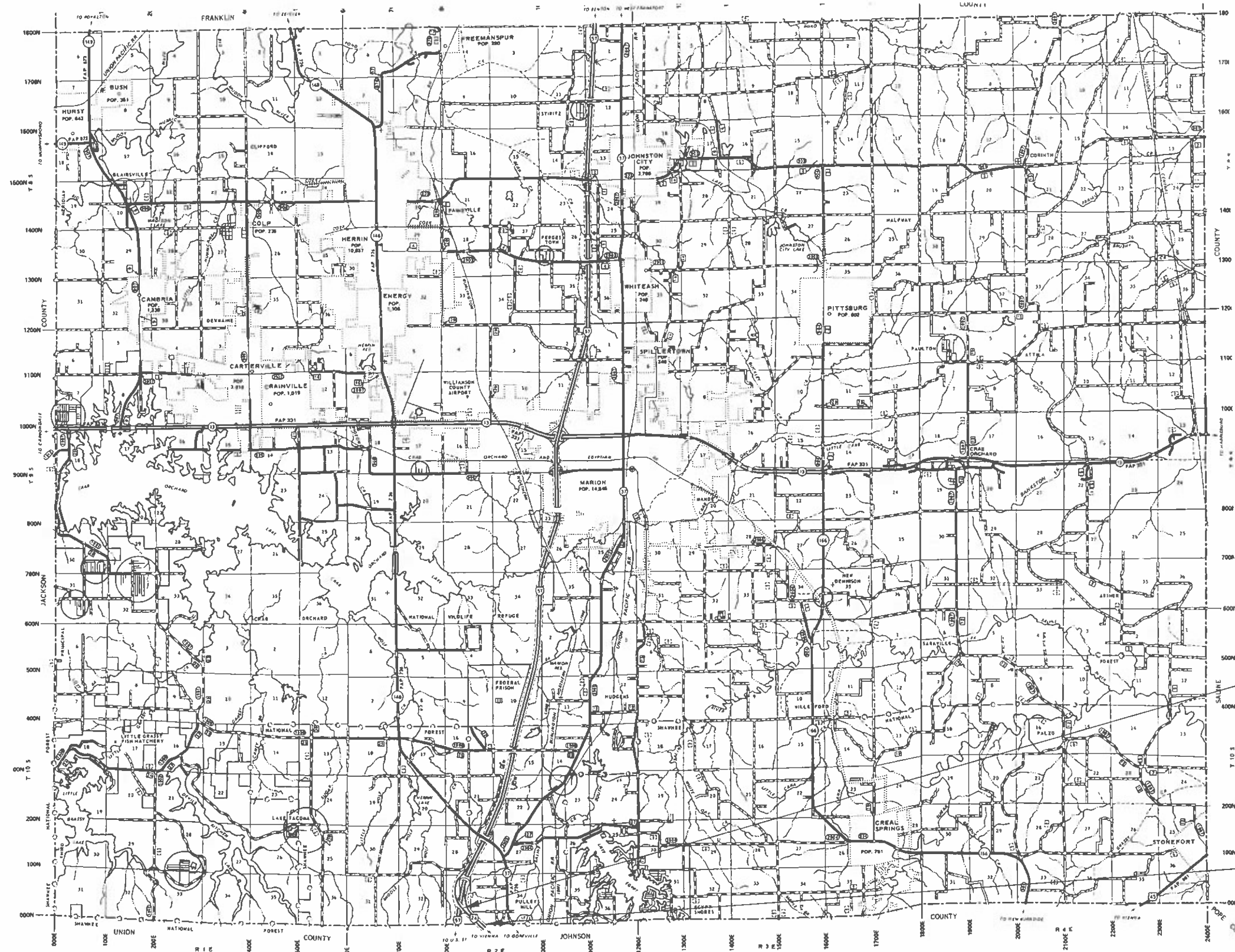
**STATE OF ILLINOIS**  
**DEPARTMENT OF TRANSPORTATION**

**WILLIAMSON COUNTY LOCATION MAP I-57**

SCALE: 1"=50' SHEET OF 1 SHEETS STA. TO STA.

F.A.I. RTE	SECTION	COUNTY	TOTAL SHEETS	SHEET NO.
24/57	D9 WEED SPRAY 2024-2	VARIOUS	12	10
CONTRACT NO. 78A49				
ILLINOIS FED AID PROJECT				

# WILLIAMSON COUNTY LOCATION MAP I-24



**BEGIN LOCATION #5:  
I-24 AT MP 0.0**

**END LOCATION #5:  
I-24 AT MP 1.6**

MODEL: Williamson County Location Map-1 (Sheet)  
 FILE NAME: c:\pwworking\brandon\302557\0978449-SH-LOCATION MAPS.dgn

USER NAME = john a brandon	DESIGNED -	REVISED -
	DRAWN -	REVISED -
PLOT SCALE = 5/16"=1'	CHECKED -	REVISED -
PLOT DATE = 10/27/2023	DATE -	REVISED -

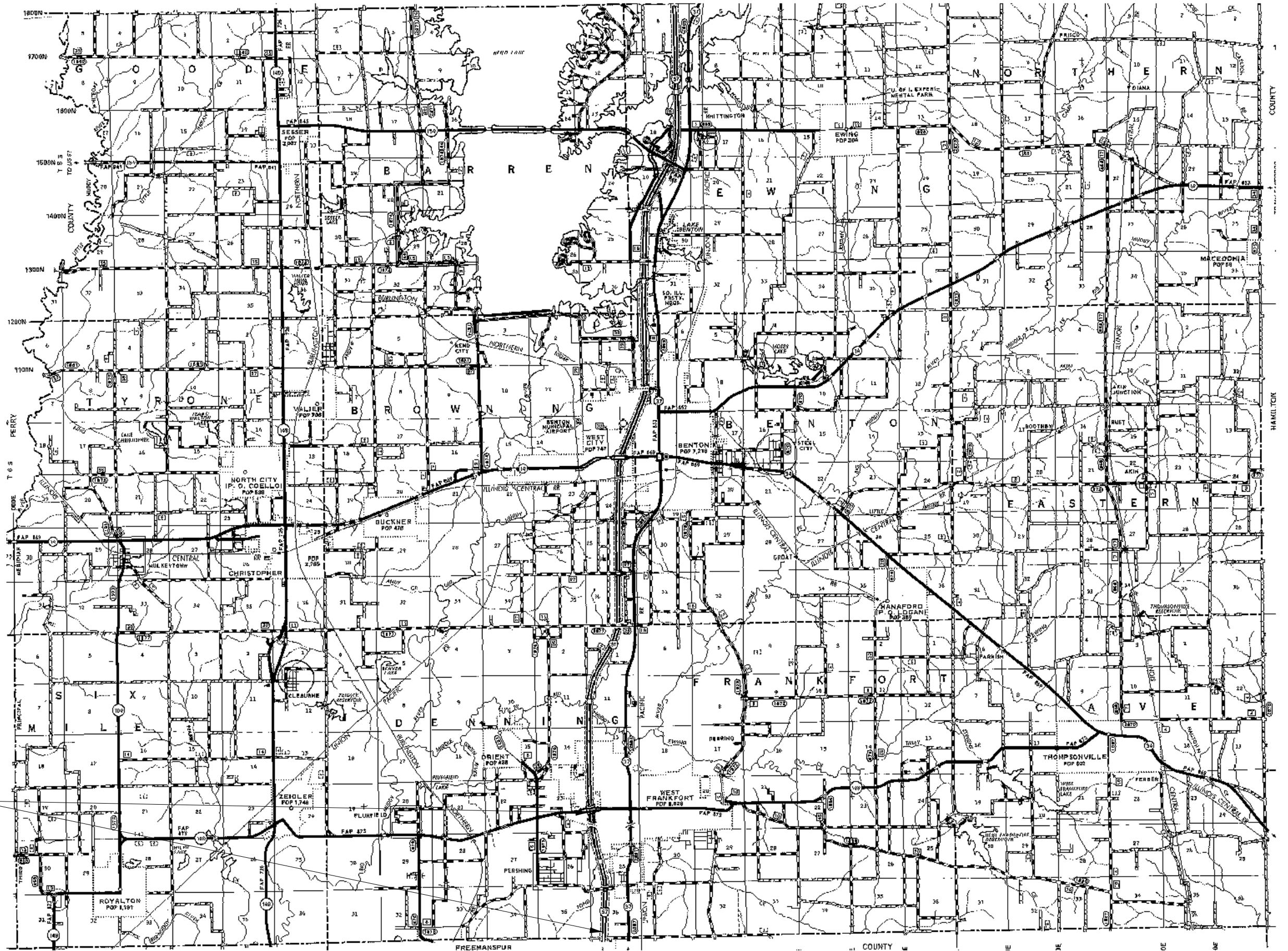
**STATE OF ILLINOIS**  
**DEPARTMENT OF TRANSPORTATION**

**WILLIAMSON COUNTY LOCATION MAP I-24**

SCALE: 1"=50'      SHEET    OF    1    SHEETS    STA.                      TO STA.

F.A.I. RTE.	SECTION	COUNTY	TOTAL SHEETS	SHEET NO.
2457	D9 WEED SPRAY 2024-2	VARIOUS	12	11
CONTRACT NO. 78A49				
ILLINOIS FED AID PROJECT				

# FRANKLIN COUNTY LOCATION MAP



**BEGIN LOCATION #6:  
MP 62.1 TO EXIT 65  
WITH INFIELDS**

MODEL: Franklin County Location Map (Sheet)  
FILE NAME: c:\pwworking\brandon\1025570\0978448-Sh-LOCATION.MAPS.dgn

USER NAME = john.a.brandon	DESIGNED -	REVISED -
	DRAWN -	REVISED -
PLOT SCALE = 0.16666833 / in.	CHECKED -	REVISED -
PLOT DATE = 10/27/2023	DATE -	REVISED -

**STATE OF ILLINOIS  
DEPARTMENT OF TRANSPORTATION**

**FRANKLIN COUNTY LOCATION MAP**

SCALE: 1"=50'      SHEET      OF 1      SHEETS      STA.      TO STA.

F.A.I. RTE.	SECTION	COUNTY	TOTAL SHEETS	SHEET NO.
24/57	D9 WEED SPRAY 2024-2	VARIOUS	12	12
CONTRACT NO. 78A49				
ILLINOIS / FED. AID PROJECT				