

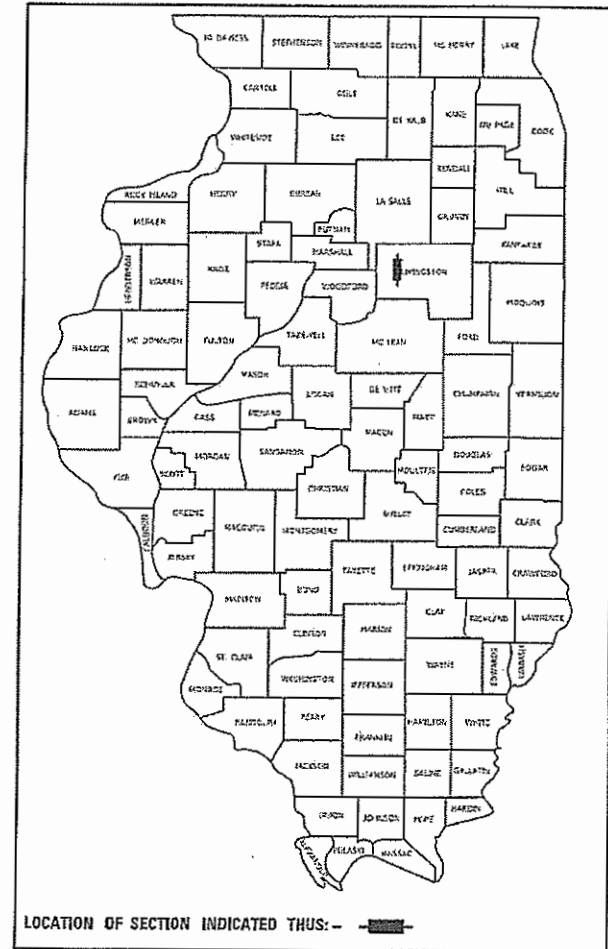
01-19-2024 LETTING ITEM 095

SHEET NO.	INDEX OF SHEETS	TITLE
1	COVER SHEET	
2	SUMMARY OF QUANTITIES, GENERAL NOTES	
3	SCHEDULES	
4	TYPICAL SECTIONS	
5	PLAN AND PROFILE	
6-14	BRIDGE PLANS	
15-17	ROADWAY CROSS SECTIONS	

STANDARDS

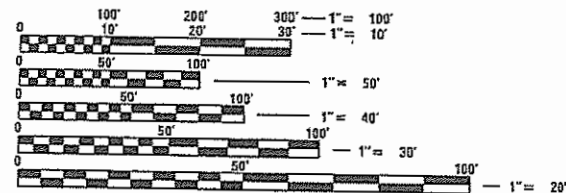
000001-08	STANDARD SYMBOLS, ABBREVIATIONS AND PATTERNS
280001-07	TEMPORARY EROSION CONTROL SYSTEMS
515001-04	NAME PLATE FOR BRIDGES
601001-05	PIPE UNDERDRAINS
601101-02	CONCRETE HEADWALLS FOR PIPE UNDERDRAINS
701901-09	TRAFFIC CONTROL DEVICES
725001-01	OBJECT AND TERMINAL MARKERS
BLR 21-9	TYPICAL APPLICATION OF TRAFFIC CONTROL DEVICES FOR CONSTRUCTION ON RURAL LOCAL HIGHWAYS

STATE OF ILLINOIS
DEPARTMENT OF TRANSPORTATION
DIVISION OF HIGHWAYS
PLANS FOR PROPOSED
SURFACE TRANSPORTATION PROGRAM-BRIDGE
LONGPOINT ROAD DISTRICT
T.R. 24 (N 500 E RD.)
SECTION 11-14106-03-BR
LIVINGSTON COUNTY
PROJECT NO. OWKF (381)
C-93-009-24



LOCATION OF SECTION INDICATED THUS: -

CLASSIFICATION: LOCAL ROAD
DESIGN VOLUME: UNDER 250 ADT
CURRENT ADT: 150 (2019)
DESIGN SPEED: 30 MPH

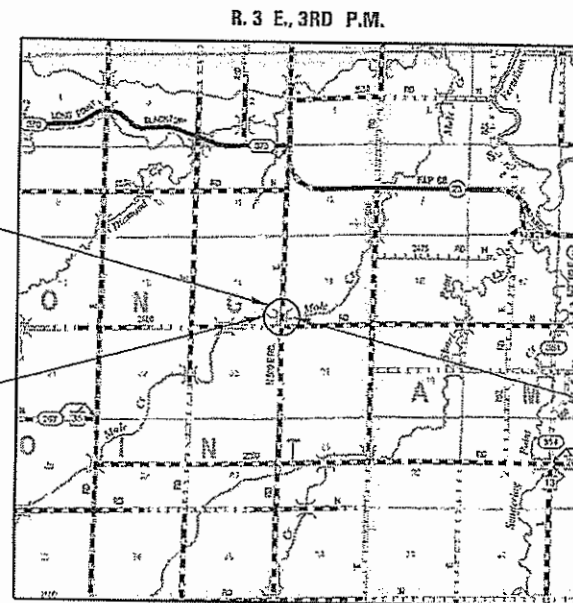


FULL SIZE PLANS HAVE BEEN PREPARED USING STANDARD ENGINEERING SCALES. REDUCED SIZED PLANS WILL NOT CONFORM TO STANDARD SCALES. IN MAKING MEASUREMENTS ON REDUCED PLANS, THE ABOVE SCALES MAY BE USED.

J.U.L.I.E.
JOINT UTILITY LOCATION INFORMATION FOR EXCAVATORS
1-800-892-0123
OR 811

STA. 10+06
SPECIAL BRIDGE DESIGN
P.P.C. DECK BEAM BRIDGE (27" DEPTH);
1 SPAN @ 66'-6" (LOB);
27'-0" RDWY.; 20° SKEW LT. FWD.
PROPOSED SN 053-4210
EXISTING SN 053-3107

IMPROVEMENT BEGINS
STA. 7+00



IMPROVEMENT ENDS
STA. 12+90.00

LOCATION MAP

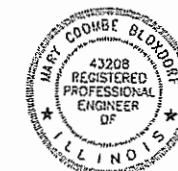
NET LENGTH OF T.R. 24 = 590.00 FEET = 0.11 MILES
GROSS LENGTH OF SECTION = 590.00 FEET = 0.11 MILES



FEHR GRAHAM
ENGINEERING & ENVIRONMENTAL

ILLINOIS IOWA WISCONSIN

ILLINOIS PROFESSIONAL DESIGN FIRM NUMBER: IB4003525



Mary Coombe Blodgett 10/20/2023

ILLINOIS PROFESSIONAL NO. 43208 EXPIRES 11-30-23

ILLINOIS DEPARTMENT OF TRANSPORTATION	
APPROVED	10/31 20 23
	<i>Clay Metcalf</i> COUNTY ENGINEER
APPROVED	10/31 20 23
	<i>Paul Gordon</i> TOWNSHIP COMMISSIONER
PASSED	NOVEMBER 06, 2023
	<i>[Signature]</i> DISTRICT THREE ENGINEER OF LOCAL ROADS & STREETS
RELEASED FOR BID BASTO OR LIMITED REVIEW	NOVEMBER 06, 2023
	<i>[Signature]</i> REGION TWO ENGINEER
	STATE OF ILLINOIS DEPARTMENT OF TRANSPORTATION

PRINTED BY THE AUTHORITY
OF THE STATE OF ILLINOIS

CONTRACT NO. 87822

SUMMARY OF QUANTITIES			
ITEM NO.	ITEM	CONSTRUCTION TYPE CODE	
		0010	
		UNIT	TOTAL
20200100	EARTH EXCAVATION	CU YD	264
20300100	CHANNEL EXCAVATION	CU YD	339
20400800	FURNISHED EXCAVATION	CU YD	376
28000305	TEMPORARY DITCH CHECKS	FOOT	40
28000400	PERIMETER EROSION BARRIER	FOOT	950
28100107	STONE RIPRAP, CLASS A4	SQ YD	279
28200200	FILTER FABRIC	SQ YD	279
35100100	AGGREGATE BASE COURSE, TYPE A	TON	1202
40600275	BITUMINOUS MATERIALS (PRIME COAT)	POUND	2849
40600290	BITUMINOUS MATERIALS (TACK COAT)	POUND	259
40603080	HOT-MIX ASPHALT BINDER COURSE, IL-19.0, N50	TON	162
40604050	HOT-MIX ASPHALT SURFACE COURSE, IL-9.5, MIX "C", N50	TON	97
48101200	AGGREGATE SHOULDERS, TYPE B	TON	95
50100100	REMOVAL OF EXISTING STRUCTURES	EACH	1
50300225	CONCRETE STRUCTURES	CU YD	24.6
50400505	PRECAST PRESTRESSED CONCRETE DECK BEAMS (27" DEPTH)	SQ FT	1796
50800205	REINFORCEMENT BARS, EPOXY COATED	POUND	3320
* 50900205	STEEL RAILING, TYPE S1	FOOT	133
51200957	FURNISHING METAL SHELL PILES 12" X 0.25"	FOOT	168
51202305	DRIVING PILES	FOOT	168
51203200	TEST PILE METAL SHELLS	EACH	2
51500100	NAME PLATES	EACH	1
542C0241	PIPE CULVERTS, CLASS C, TYPE 1 36"	FOOT	230
60146304	PIPE UNDERDRAINS FOR STRUCTURES 4"	FOOT	90
67100100	MOBILIZATION	L SUM	1
* 72501000	TERMINAL MARKER - DIRECT APPLIED	EACH	4
X2070302	POUROUS GRANULAR EMBANKMENT, SPECIAL	TON	101
X2501000	SEEDING, CLASS 2 (SPECIAL)	ACRE	0.3

* SPECIALTY ITEMS

GENERAL NOTES

- 1) ALL CONSTRUCTION SHALL BE DONE IN ACCORDANCE WITH THE STATE OF ILLINOIS "STANDARD SPECIFICATIONS FOR ROAD AND BRIDGE CONSTRUCTION, ADOPTED JANUARY, 1 2022", (HERE IN AFTER REFERRED TO AS THE STANDARD SPECIFICATIONS; THE LATEST EDITION OF THE "ILLINOIS MANUAL ON UNIFORM TRAFFIC CONTROL DEVICES FOR STREETS AND HIGHWAYS"; THE DETAILS IN THE PLANS AND THE "SPECIAL PROVISIONS" INCLUDED IN THE DOCUMENTS.
 - 2) ALL CLEARING, GRUBBING, FENCE REMOVAL, PAVEMENT REMOVAL, AND REMOVAL OF EXISTING DRAINAGE STRUCTURES SHALL BE INCLUDED IN THE COST OF EARTH EXCAVATION. ALL BITUMINOUS MATERIAL SHALL BE REMOVED AND PROPERLY DISPOSED OF BY THE CONTRACTOR IN A METHOD APPROVED BY THE ENGINEER. REMOVAL AND DISPOSAL OF BITUMINOUS MATERIAL SHALL BE INCLUDED IN THE COST OF EARTH EXCAVATION AND NO ADDITIONAL COMPENSATION WILL BE ALLOWED.
 - 3) WHERE SECTION OR SUBSECTION MONUMENTS ARE ENCOUNTERED, THE ENGINEER SHALL BE NOTIFIED BEFORE SUCH MONUMENTS ARE REMOVED. THE CONTRACTOR SHALL PROTECT AND CAREFULLY PRESERVE ALL PROPERTY MARKS AND MONUMENTS UNTIL THE OWNER, AN AUTHORIZED SURVEYOR O AGENT HAS WITNESSED OR OTHERWISE REFERENCED THEIR LOCATION.
 - 4) ANY REFERENCE TO STANDARDS THROUGHOUT THE PLANS OR SPECIAL PROVISIONS SHALL BE INTERPRETED TO BE THE LATEST STANDARD OF THE DEPARTMENT
 - 5) THE LOCATION ON THE PLANS OF EXISTING DRAINAGE STRUCTURES, TELEPHONE LINES, ELECTRIC LINES, WAER SERVICE LINES, GAS MAINS, AND OTHER UTILITY FACILITIES AS SHOWN ON THE PLANS ARE BASED ON FIELD INVESTIGATIONS AND THE BEST INFORMATION AVAILABLE, BUT THE LOCATIONS ARE NOT GUARANTEED. IT SHALL BE THE CONTRACTOR'S RESPONSIBILITY TO ASCERTAIN THEIR EXACT LOCATION FROM THE INDIVIDUAL UTILITY COMPANIES AND BY FIELD INSPECTION.
 - 6) THE CONTRACTOR SHALL PROVIDE ACCESSS TO ABUTTING PROPERTY AT AL TIMES DURING CONSTRUCTION OF THE PROJECT.
 - 7) THE FOLLOWING RATES OF APPLICATION HAVE BEEN USED IN CALCULATING PLAN QUANTITIES

AGGREGATE BASE COURSE	2.05 TON/ CU YD
HOT MIX ASPHALT	112 LBS/SQ UD./INCH THICKNESS
POROUS GRANULAR EMBANKMENT	2.0 TON/CU YD
-
- | BITUMINOUS MATERIALS RATES | |
|-------------------------------|----------------|
| SURFACE TYPE | RESIDUAL RATE |
| AGGREGATE BASE | 0.250 LB/SQ FT |
| MILLED HMA OR PCC (TACK COAT) | 0.050 LB/SQ FT |
| EXISTING PAVEMENT (TACK COAT) | 0.050 LB/SQ FT |
| TACK COAT (BETWEEN LIFTS) | 0.025 LB/SQ FT |
-
- 8) THE FINAL SURFACE OF ALL EMBANKMENT AREAS SHALL BE SEEDED. THE TOP 4 INCHES OF THE SEEDED AREAS SHALL BE TOPSOIL SUBJECT TO THE APPROVAL OF THE ENGINEER. THE COST OF SHAPING THE SLOPES AND PROVIDING TOP SOIL WILL NOT BE PAID FOR SEPARATELY BUT SHALL BE INCLUDED IN THE COST OF EARTH EXCAVATION
 - 9) THE AREA TO BE SEEDED SHALL CONSIST OF ALL DISTURBED EARTH SURFACES WITHIN THE RIGHT OF WAY OR AS DIRECTED BY THE ENGINEER. SEEDING, CLASS 2 (SPECIAL) = 0.3 ACRES
 - 10) ALL WASTE MATERIAL FROM EXCAVATIONS SHALL BE DISPOSED OF BY THE CONTRACTOR. NO ADDITIONAL COMPENSATION WILL BE ALLOWED.
 - 11) EROSION CONTROL ITEMS TO BE PLACED AS DIRECTED BY THE ENGINEER.
 - 12) COMMITMENTS.
NONE

FEHR GRAHAM

ENGINEERING & ENVIRONMENTAL

ILLINOIS DESIGN FIRM NO. 084-003525

PL01 DATE: 8/6/2023
mascot

© 2022 FEHR-GRAHAM

ILLINOIS
IOWA
WISCONSIN

OWNER/DEVELOPER:
LIVINGSTON COUNTY HWY. DEPT.
1705 S. MANLOVE STREET
PONTIAC, IL 61764

PROJECT AND LOCATION:
SECTION II-14106-03-BR
TR 24
OVER MOLE CREEK
LONG POINT ROAD DISTRICT

DRAWN BY: FG
APPROVED BY: MCB
DATE:
SCALE:

REVISIONS		
REV. NO.	DESCRIPTION	DATE

DRAWING:
SUMMARY OF QUANTITIES
AND GENERAL NOTES

SET TYPE:
\\CHAMPAIGN\Drawings\C30\21-1091\Plans\21-1091-500.dwg

JOB NUMBER:
21-1091

SHEET NUMBER:
2 of 17

ROADWAY SCHEDULE

AGGR. BASE CSE (PRIME COAT) RATE - 0.25 POUNDS/SF AGGR. SHOULDER RATE - 1.60 T/CU YD HMA LIFT (TACK COAT) RATE - 0.025 POUNDS/SF AGGREGATE BASE COURSE RATE - 2.05 TONS/CU YD HMA SURFACE / BINDER (112 LBS) RATE - 0.056 T/SY*IN				35100100	40600275	40600290	40603080	40604050	48101200			
LOCATION STATION TO STATION				LENGTH FT	WIDTH FT	AREA SQ FT	AGGREGATE BASE COURSE TYPE A TONS	BITUMINOUS MATERIALS (PRIME COAT) POUNDS	BITUMINOUS MATERIALS (TACK COAT) POUNDS	HMA BINDER COURSE IL 19.0, N50 TON	HMA SURFACE COURSE IL-9.5, MIX "C", N50 TON	AGGREGATE SHOULDERS TYPE B TON
STA. 07+00.00 TO STA. 07+50.00	50.00	20.00	1,000.00	75.93								
STA. 07+50.00 TO STA. 08+36.00	86.00	22.00	1,892.00	143.65								
STA. 08+36.00 TO STA. 09+72.04	136.04	22.00	2,992.88	434.02								
STA. 10+39.96 TO STA. 11+64.00	124.04	22.00	2,728.88	343.94								
STA. 11+64.00 TO STA. 12+50.00	86.00	22.00	1,892.00	143.65								
STA. 12+50.00 TO STA. 12+90.00	40.00	20.00	800.00	60.74								
STA. 07+00.00 TO STA. 07+50.00	50.00	19.00	950.00		262.50	23.75	14.78	8.87				
STA. 07+50.00 TO STA. 09+72.04	222.04	20.00	4,440.80		1,221.22	111.02	69.08	41.45				
STA. 10+39.96 TO STA. 12+50.00	210.04	20.00	4,200.80		1,155.22	105.02	65.35	39.21				
STA. 12+50.00 TO STA. 12+90.00	40.00	19.00	760.00		210.00	19.00	11.82	7.09				
STA. 07+00.00 TO STA. 07+50.00	50.00	6.50	325.00									9.63
STA. 07+50.00 TO STA. 09+72.04	222.04	6.00	1,332.24									39.47
STA. 10+39.96 TO STA. 12+50.00	210.04	6.00	1,260.24									37.34
STA. 12+50.00 TO STA. 12+90.00	40.00	6.50	260.00									7.70
TOTAL:							1,202.00	2,849.00	259.00	162.00	97.00	95.00

SUMMARY OF EARTHWORK

LOCATION	EARTH EXCAVATION	CHANNEL EXCAVATION	SHRINKAGE FACTOR APPLIED	PERCENT USED	EXCAVATION ADJUSTED FOR SHRINKAGE	EMBANKMENT	EARTHWORK BALANCE WASTE (+) OR SHORTAGE (-)
	CU YD	CU YD				CU YD	CU YD
STA. 7+50.00 TO STA. 9+79.04	110.2		25.00%	100.00%	82.7	517.8	(435.15)
STA. 9+79.04 TO STA. 10+47.06		339.1	25.00%	70.00%	178.0		178.03
STA. 10+47.06 TO STA. 12+90	153.9		25.00%	100.00%	115.4	233.9	(118.48)
TOTAL	264	339				752	-376



ENGINEERING & ENVIRONMENTAL
ILLINOIS DESIGN FIRM NO. 184-003525

ILLINOIS
IOWA
WISCONSIN

OWNER/DEVELOPER:
LIVINGSTON COUNTY HWY. DEPT.
1705 S. MANLOVE STREET
PONTIAC, IL 61764

PROJECT AND LOCATION:
SECTION II-I4106-03-BR
TR 24
OVER MOLE CREEK
LONG POINT ROAD DISTRICT

DRAWN BY: FG
APPROVED BY: MCB
DATE:
SCALE:

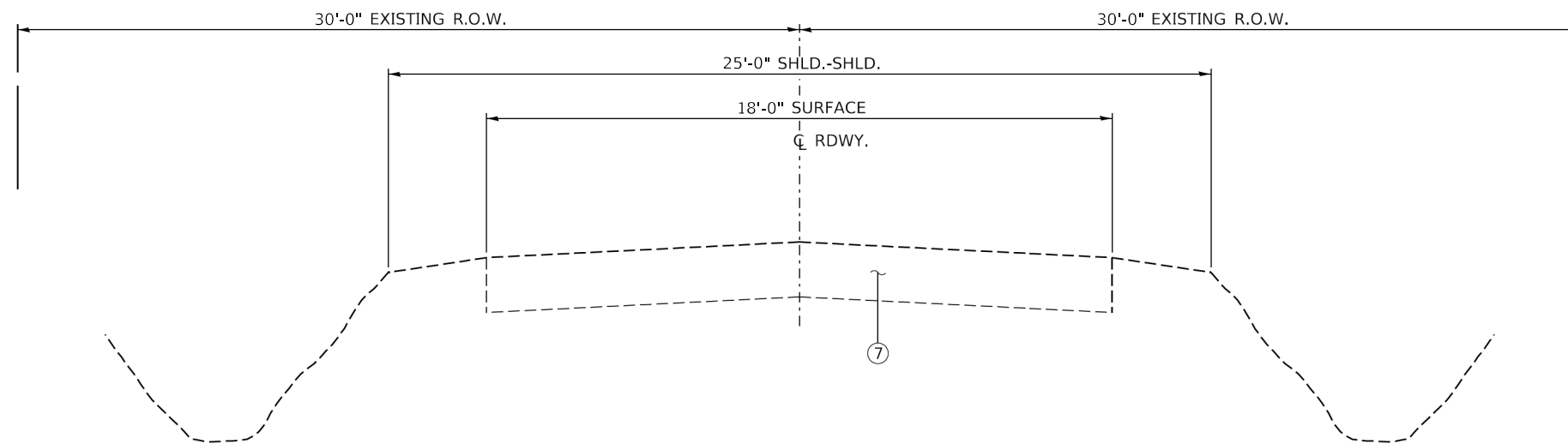
REVISIONS		
REV. NO.	DESCRIPTION	DATE

DRAWING:
SCHEDULES

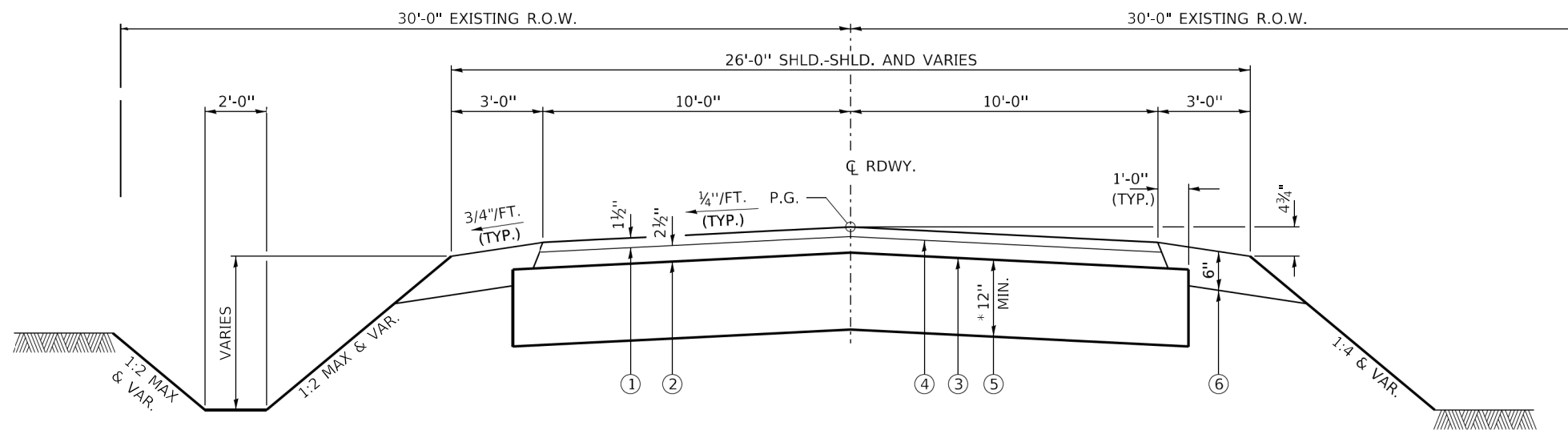
SET TYPE:
\\CHAMPAIGN\Drawings\C30\21\21-109\Plans\21-109I Schedule.dgn

JOB NUMBER:
21-109I

SHEET NUMBER:
3 of 17



EXISTING TYPICAL CROSS SECTION
STA. 7+00 TO 12+90



PROPOSED TYPICAL CROSS SECTION
STA. 7+00 TO 12+90

SUGGESTED CUT SECTION
CONSTRUCT AS SHOWN IN
STATION CROSS SECTIONS

TRANSITIONS FROM THE PROPOSED ROADWAY TO THE EXISTING ROADWAY ARE TO BE CONSTRUCTED FROM STA. 7+00 TO 7+50 AND STA. 12+50 TO 12+90. TRANSITION SHOULDER WIDTH 25' AT EACH END OF BRIDGE

SUGGESTED FILL SECTION
CONSTRUCT AS SHOWN IN
STATION CROSS SECTIONS

* VARIES STA. 8+36 TO STA. 9+72.04 AND STA. 10+39.96 TO STA. 11+64.00

LEGEND

- ① HMA SURFACE COURSE, IL.-9.5, MIX C, N50 (1½" THICKNESS)
- ② HMA BINDER COURSE, IL.-19.0, N50 (2½" THICKNESS)
- ③ BITUMINOUS MATERIALS (PRIME COAT)
- ④ BITUMINOUS MATERIALS (TACK COAT)
- ⑤ AGGREGATE BASE COURSE, TYPE A (12" MIN.)
- ⑥ AGGREGATE SHOULDERS, TYPE B (6")
- ⑦ EXISTING OIL & CHIP SURFACE ON AGGREGATE BASE

HOT-MIX ASPHALT MIXTURE REQUIREMENTS

MIXTURE USE(S)	HOT-MIX ASPHALT SURFACE COURSE	BINDER COURSE
PG:	PG 64-22	PG 64-22
DESIGN AIR VOIDS	4% @50 Gyr.	4% @50 Gyr.
MIXTURE COMPOSITION: (MIXTURE GRADATION)	IL 9.5	IL 19.0
FRICTION AGGREGATE:	MIXTURE C	NONE
DENSITY TEST METHOD	CORES	CORES
MIXTURE WEIGHT:	112 LBS/SY/INCH THICKNESS	112 LBS/SY/INCH THICKNESS
QUALITY MANAGEMENT PROGRAM	QC/QA	QC/QA

FEHR GRAHAM
ENGINEERING & ENVIRONMENTAL
ILLINOIS DESIGN FIRM NO. 184-003525

ILLINOIS
IOWA
WISCONSIN

OWNER/DEVELOPER:
LIVINGSTON COUNTY HWY. DEPT.
1705 S. MANLOVE STREET
PONTIAC, IL 61764

PROJECT AND LOCATION:
SECTION II-14106-03-BR
TR 24
OVER MOLE CREEK
LONG POINT ROAD DISTRICT

DRAWN BY: FG
APPROVED BY: MCB
DATE: 10/17/2023
SCALE: NTS

REVISIONS		
REV. NO.	DESCRIPTION	DATE

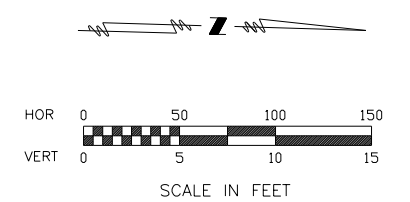
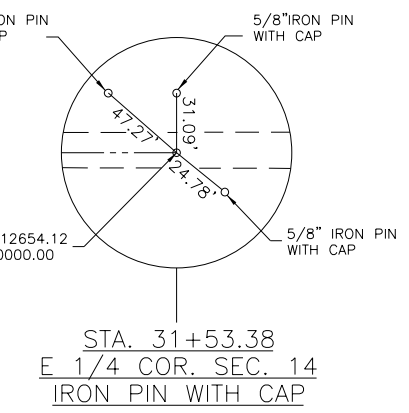
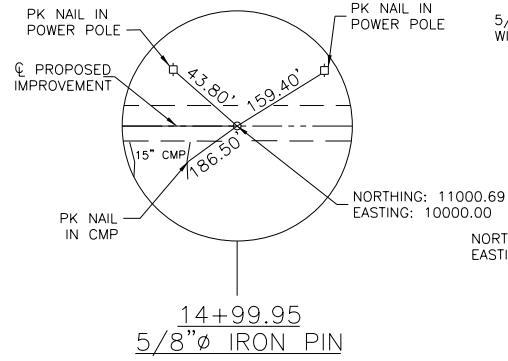
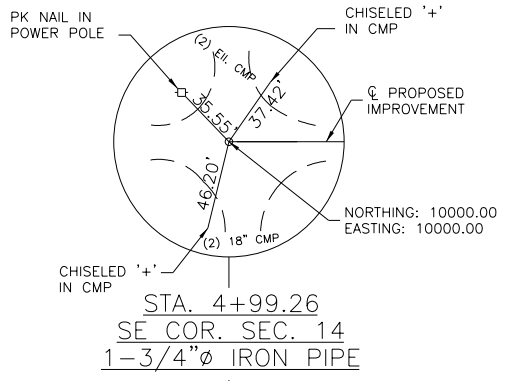
DRAWING:
TYPICAL CROSS-SECTIONS

SET TYPE:
\\CHAMPAIGN\Drawings\C30\21\21-109\Plans\21-1091 Typ Sections.dgn

JOB NUMBER:
21-1091

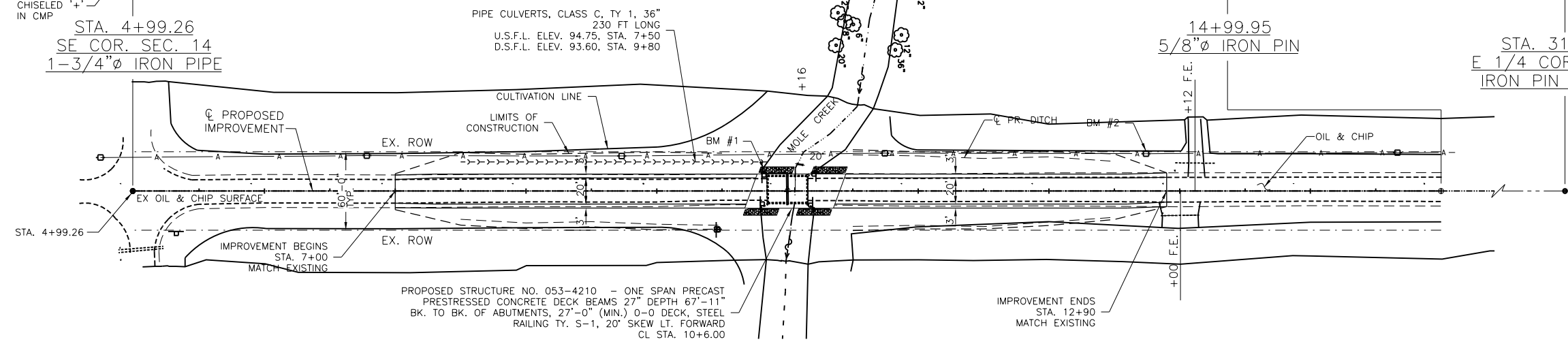
SHEET NUMBER:
4 of 17

SE 1/4 SEC. 14, T29N, R3E, 3RD P.M.
LUCILLE G. WERNER TRUST



LEGEND

- FOUND IRON PIN
- SET IRON PIN
- △ SET MAG NAIL
- POWER POLE
- ⊥ SIGN
- STREAM
- SECTION LINE
- ~ ~ ~ CULTIVATION LINE



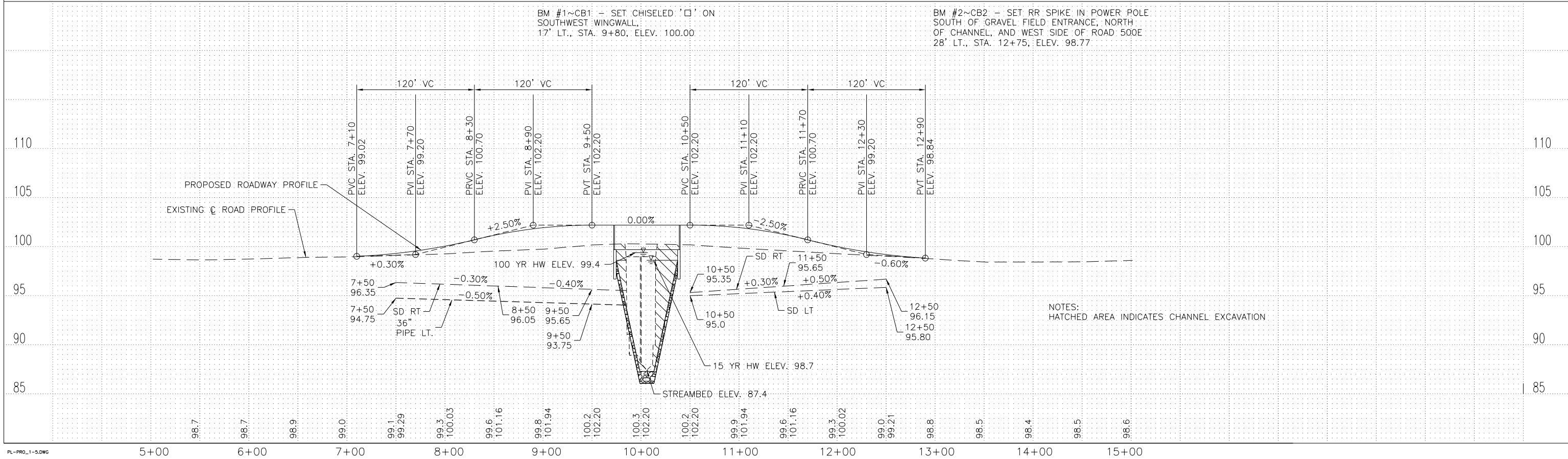
PROPOSED STRUCTURE NO. 053-4210 - ONE SPAN PRECAST
PRESTRESSED CONCRETE DECK BEAMS 27" DEPTH 67'-11"
BK. TO BK. OF ABUTMENTS, 27'-0" (MIN.) 0-0 DECK, STEEL
RAILING TY. S-1, 20' SKEW LT. FORWARD
CL STA. 10+6.00

EXISTING STRUCTURE NO. 053-3107 - TWO SPAN STEEL BEAM
CONCRETE DECK, CLOSED CONCRETE ABUTMENTS,
31.2' BK-BK ABUTMENT, 21.6' 0-0 DECK, 0' SKEW
CL STA. 10+00.00

JANEEN L. TRONC
SW 1/4 SEC. 13, T29N, R3E, 3RD P.M.

BM #1~CB1 - SET CHISELED '+' ON
SOUTHWEST WINGWALL,
17' LT., STA. 9+80, ELEV. 100.00

BM #2~CB2 - SET RR SPIKE IN POWER POLE
SOUTH OF GRAVEL FIELD ENTRANCE, NORTH
OF CHANNEL, AND WEST SIDE OF ROAD 500E
28' LT., STA. 12+75, ELEV. 98.77



NOTES:
HATCHED AREA INDICATES CHANNEL EXCAVATION

PL-PROJ-1-5.DWG 5+00 6+00 7+00 8+00 9+00 10+00 11+00 12+00 13+00 14+00 15+00

FEHR GRAHAM
ENGINEERING & ENVIRONMENTAL
ILLINOIS DESIGN FIRM NO. 184-003525
©2023 FEHR GRAHAM

ILLINOIS
IOWA
WISCONSIN

OWNER/DEVELOPER:
LIVINGSTON COUNTY HIGHWAY DEPT.
1705 S, MANLOVE STREET
PONTIAC, IL 61764

PROJECT AND LOCATION:
LONG POINT ROAD DISTRICT
SECTION 11-14106-03-BR
LIVINGSTON COUNTY

DRAWN BY: MCE
APPROVED BY: MCB
DATE: 5-10-2022
SCALE: 50 HOR
5 VERT

REVISIONS		
REV. NO.	DESCRIPTION	DATE

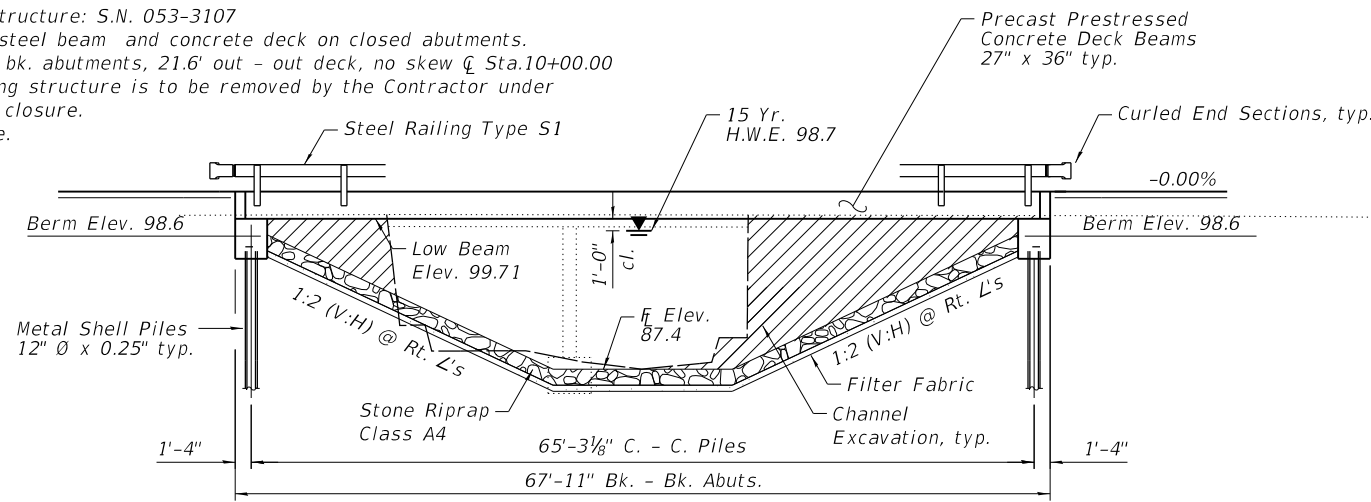
DRAWING:
PLAN AND PROFILE
T.R. 24 OVER MOLE CREEK

SET TYPE:
\\CHAMPAIGN\Drawings\C3D\21\21-1091\From 12066\PLANPRD.dgn

JOB NUMBER:
21-1091

SHEET NUMBER:
5 of 17

Existing Structure: S.N. 053-3107
 Two span steel beam and concrete deck on closed abutments.
 31.2' bk. - bk. abutments, 21.6' out - out deck, no skew @ Sta.10+00.00
 The existing structure is to be removed by the Contractor under
 total road closure.
 No Salvage.



LOADING HL-93
 Allow 50#/sq. ft. for future wearing surface.

DESIGN SPECIFICATIONS
 2020 AASHTO LRFD Bridge Design Specifications, 9th Edition

DESIGN STRESSES
FIELD UNITS

- $f'_c = 3,500$ psi
- $f_y = 60,000$ psi (Reinforcement)
- PRECAST PRESTRESSED UNITS**
- $f'_c = 6,000$ psi
- $f'_{cl} = 5,000$ psi
- $f_s = 270,000$ psi (0.50" \emptyset low lax. strands)
- $f_{si} = 201,960$ psi (0.50" \emptyset low lax. strands)

SEISMIC DATA

- Seismic Performance Zone (SPZ) = 1
- Design Spectral Acceleration at 1.0 sec. (SD1) = 0.107
- Design Spectral Acceleration at 0.2 sec. (SDS) = 0.173
- Soil Site Class = D

GENERAL NOTES

Reinforcement bars designated (E) shall be epoxy coated.
 The Contractor shall drive one steel HP 12x53 test pile in a permanent location at the West abutment as directed by the Engineer, before ordering the remainder of piles.

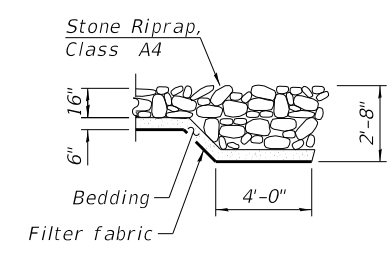
Layout of riprap may be varied in the field to suit ground conditions as directed by the Engineer.

The Standard Specifications adopted by the Department of Transportation January, 1, 2022 apply to this work.

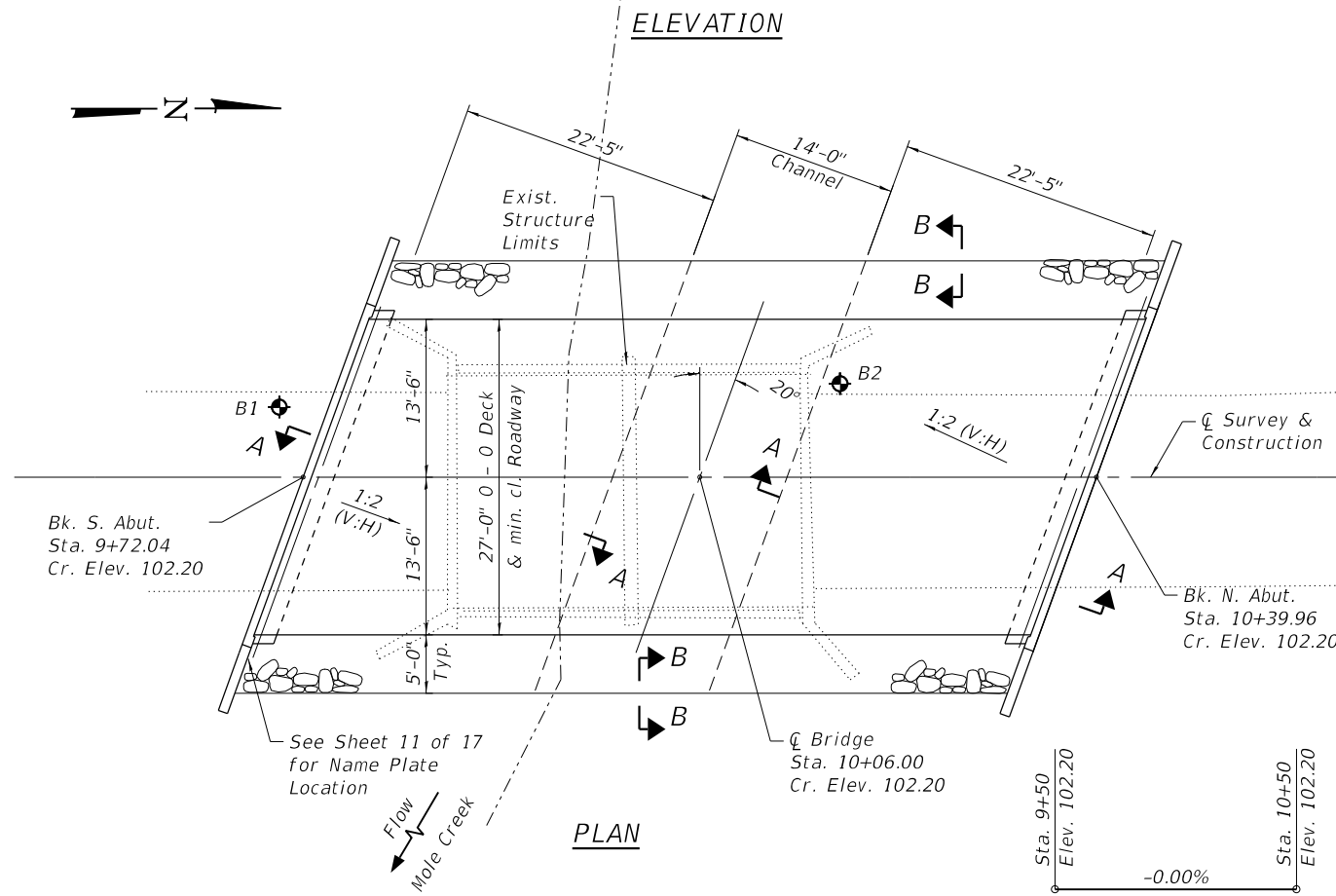
Excavation required to construct the abutments included in the cost of Concrete Structures. No additional compensation will be allowed for Structure Excavation.

TOTAL BILL OF MATERIAL

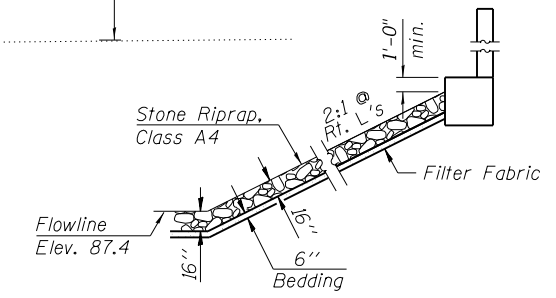
ITEM	UNIT	SUPER	SUB	TOTAL
Channel Excavation	Cu. Yd.			339
Pipe Underdrain for Structures 4"	Foot		90	90
Precast Prestressed Concrete Deck Beams (27" Depth)	Sq. Ft.	1,796		1,796
Removal of Existing Structures	Each	1		1
Concrete Structures	Cu. Yd.		24.6	24.6
Reinforcement Bars, Epoxy Coated	Pound		3,320	3,320
Steel Railing, Type S1	Foot	133		133
Name Plates	Each			1
Furnishing Metal Shell Piles 12" \emptyset x 0.25"	Foot		168	168
Driving Piles	Foot		168	168
Test Pile Metal Shells	Each		2	2
Stone Riprap, Class A4	Sq. Yd.		279	279
Porous Granular Embankment, Special	Ton		101	101
Filter Fabric	Sq. Yd.		279	279



SECTION B-B



PLAN



SECTION A-A

Excavation will not be paid for as a separate item and shall be considered as included in Stone Riprap, Class A4.

PROFILE GRADE
 (Along proposed \emptyset)

WATERWAY INFORMATION

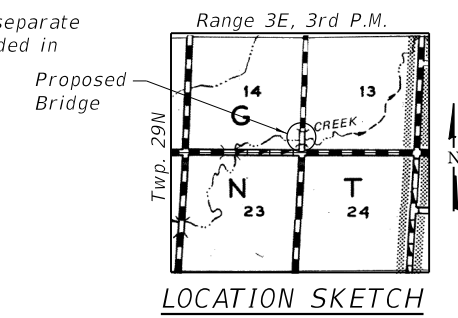
Drainage Area = 18.1 Sq. Mi. Low Grade Elev. 98.41 @ Sta. 14+00

Flood	Freq. Yr.	Q C.F.S.	Opening Ft ²		Nat. H.W.E.	Head - Ft.			Headwater El. Prop.
			Exist.	Prop.		Exist.	Prop.	Exist.	
Design	15	2210	237.3	533.3	98.7	0.7	0.5	99.4	99.2
Base	100	3430	237.3	533.3	99.5	0.4	0.3	99.9	99.8
Overtopping	15	441	-	-	-	-	-	-	-
Max. Calc.	500	4620	237.3	533.3	100.0	0.2	0.2	100.3	100.2

10 Year Velocity through Existing Bridge = 5 fps 10 Year Velocity through Proposed Bridge = 3.92 fps

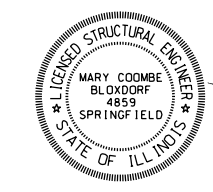
DESIGN SCOUR ELEVATION TABLE

Event/Limit State	Design Scour Elevations (ft.)		Item 113
	W. Abut.	E. Abut.	
Q100	96.61	96.61	8
Q200	96.61	96.61	
Design	96.61	96.61	
Check	96.61	96.61	



LOCATION SKETCH

"I certify that to the best of my knowledge, information and belief, this bridge design is structurally adequate for the design loading shown on the plans. The design is an economical one for the style of structure and complies with requirements of the specified 'AASHTO LRFD Bridge Design Specifications'."



Mary Coombe Blafday
 ILLINOIS STRUCTURAL NO. 4859
 EXPIRES 11/30/2024
 DATE: 10/20/2023

GENERAL PLAN & ELEVATION
T.R. 24 OVER MOLE CREEK
SECTION 11-14106-03-BR
LIVINGSTON COUNTY
STATION 10+06.00
S.N. 053-4210

MOLE CREEK
 BUILT 20__ BY
 LONG POINT ROAD DISTRICT
 LIVINGSTON COUNTY
 SEC. 11-14106-03-BR
 STR. NO. 053-4210 LOADING HL-93

NAME PLATE
 See Std. 515001



ILLINOIS
 IOWA
 WISCONSIN

OWNER/DEVELOPER:
 LIVINGSTON COUNTY HWY. DEPT.
 1705 S. MANLOVE STREET
 PONTIAC, IL 61764

PROJECT AND LOCATION:
 SECTION 11-14106-03-BR
 TR 24
 OVER MOLE CREEK
 LONG POINT ROAD DISTRICT

DRAWN BY: FG
 APPROVED BY: MCB
 DATE: 10/17/2023
 SCALE: NTS

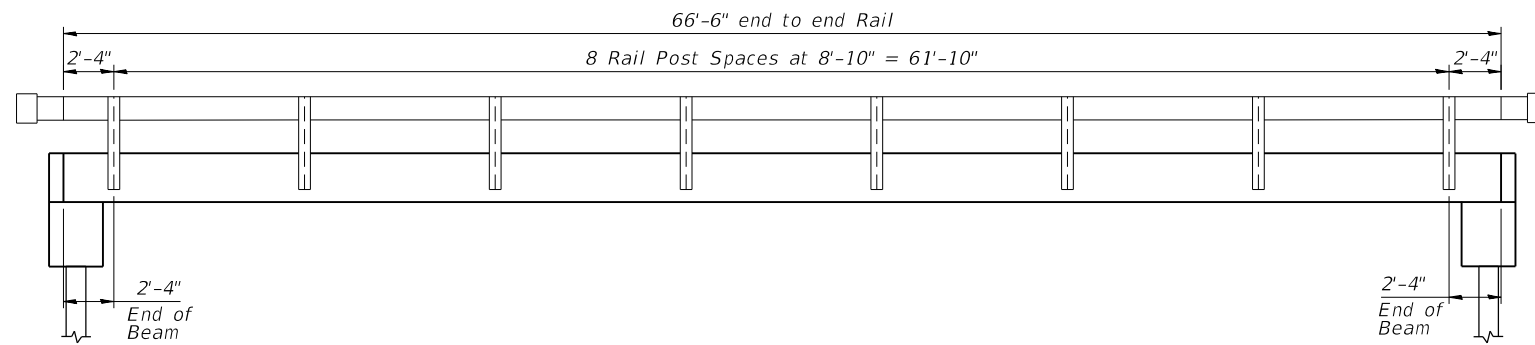
REVISIONS		
REV. NO.	DESCRIPTION	DATE

DRAWING:
 GENERAL PLAN AND ELEVATION
 STRUCTURE NUMBER 053-4210

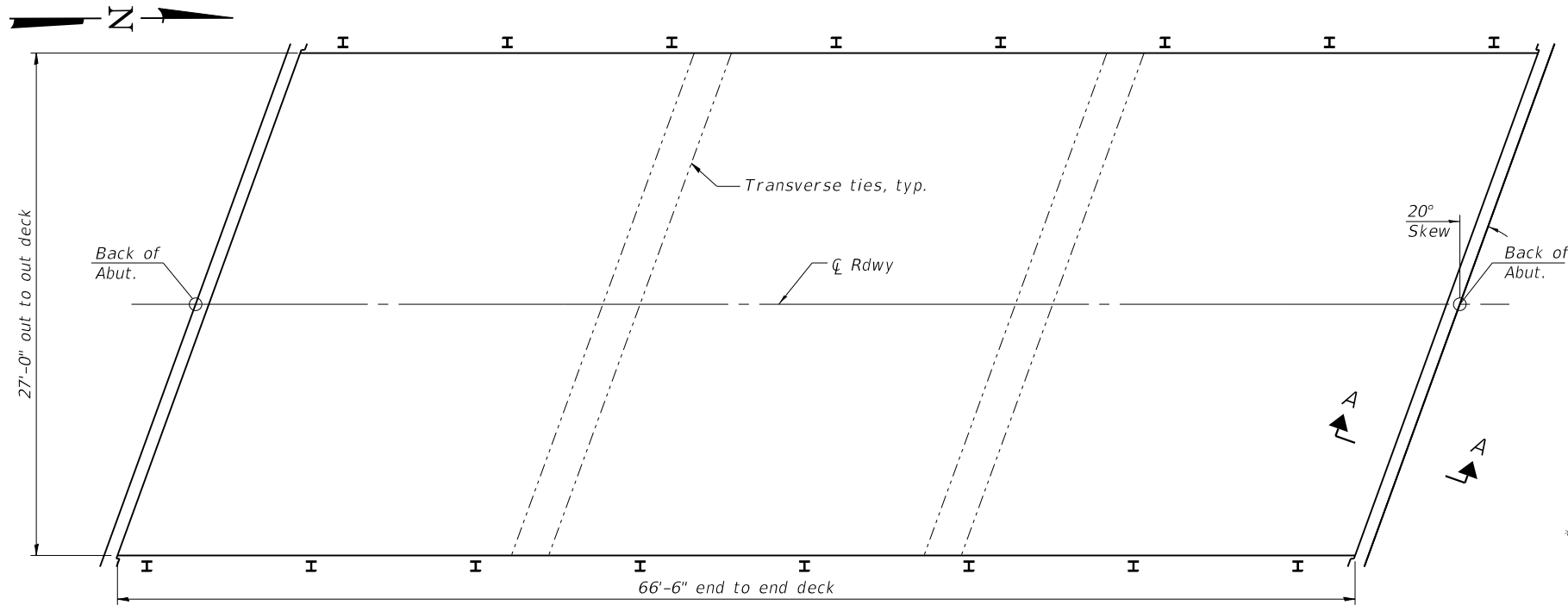
SET TYPE:
 \\CHAMPAIGN\Drawings\130\2121-109\Plans\gpe.dgn

JOB NUMBER:
 21-1091

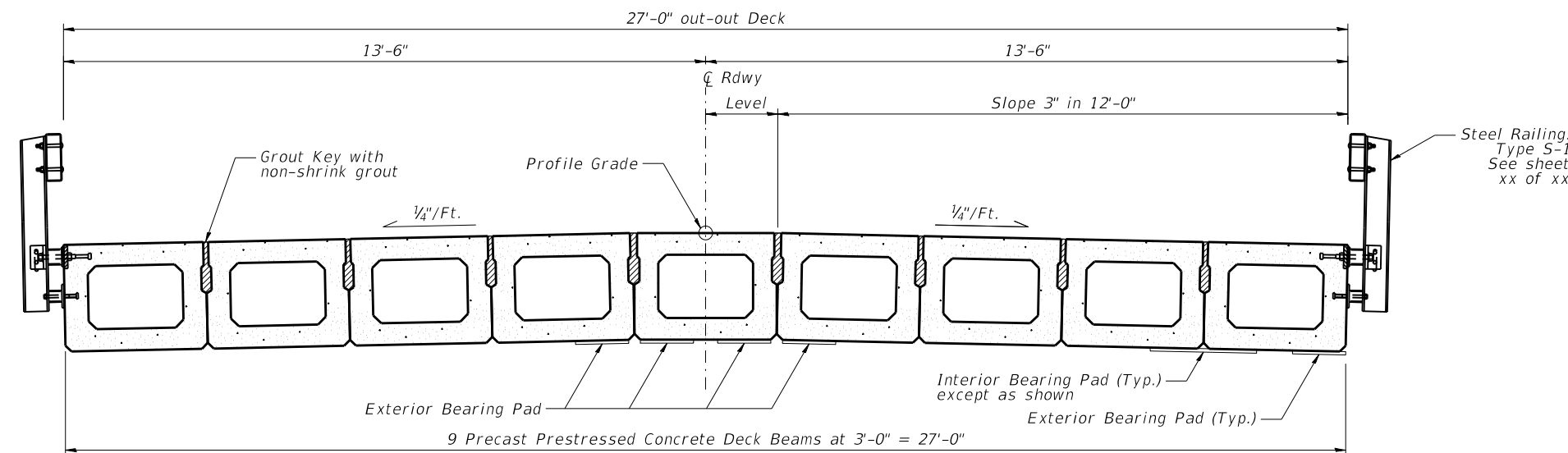
SHEET NUMBER:
 6 of 17



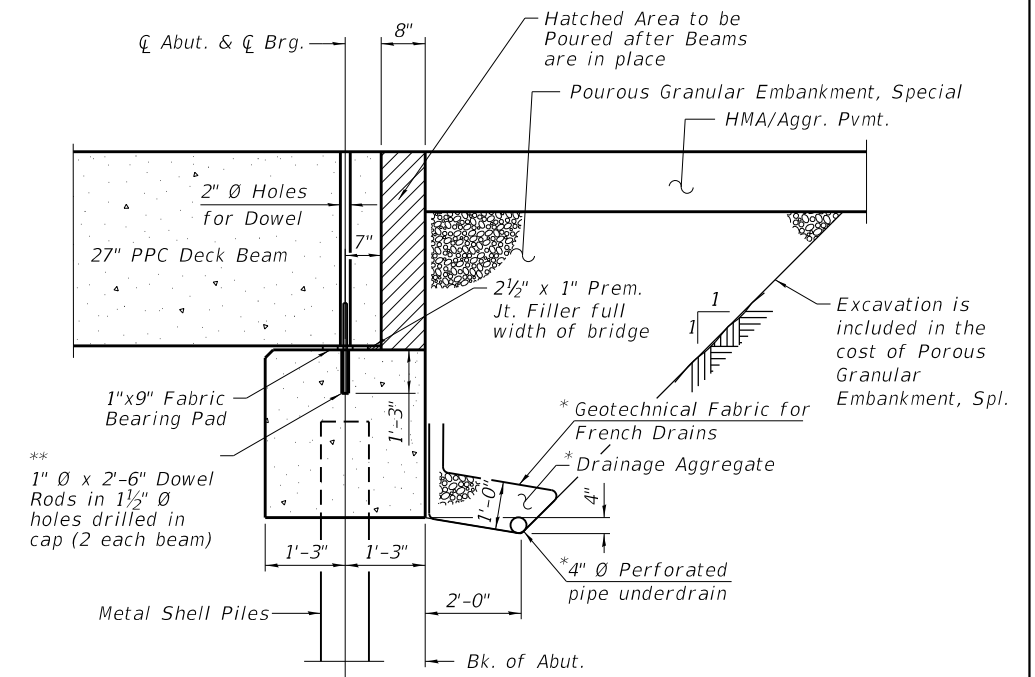
STEEL RAILING ELEVATION



PLAN



CROSS SECTION



SECTION A-A THRU ABUTMENT

(Horiz. dim. @ Rt. L's)

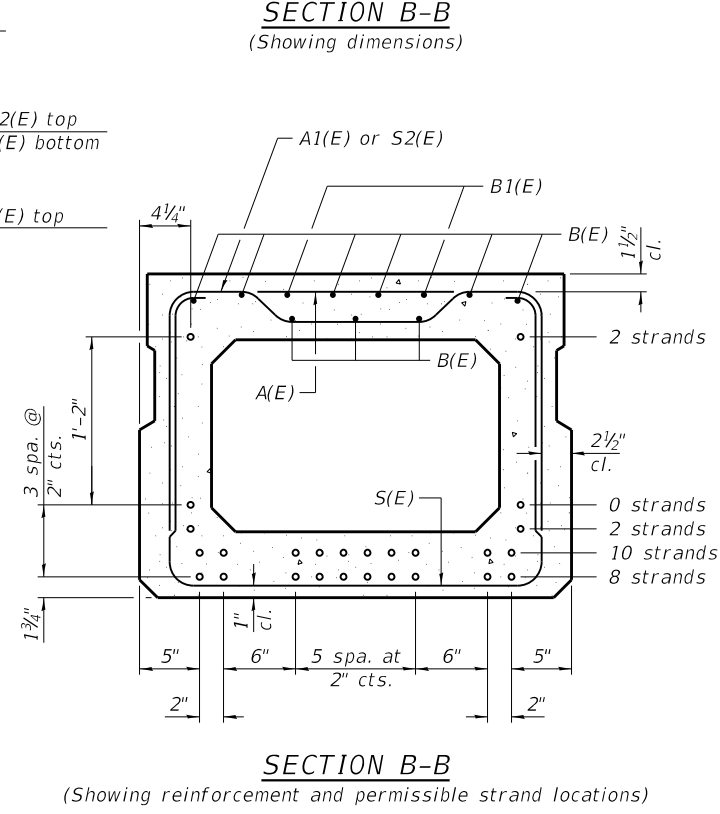
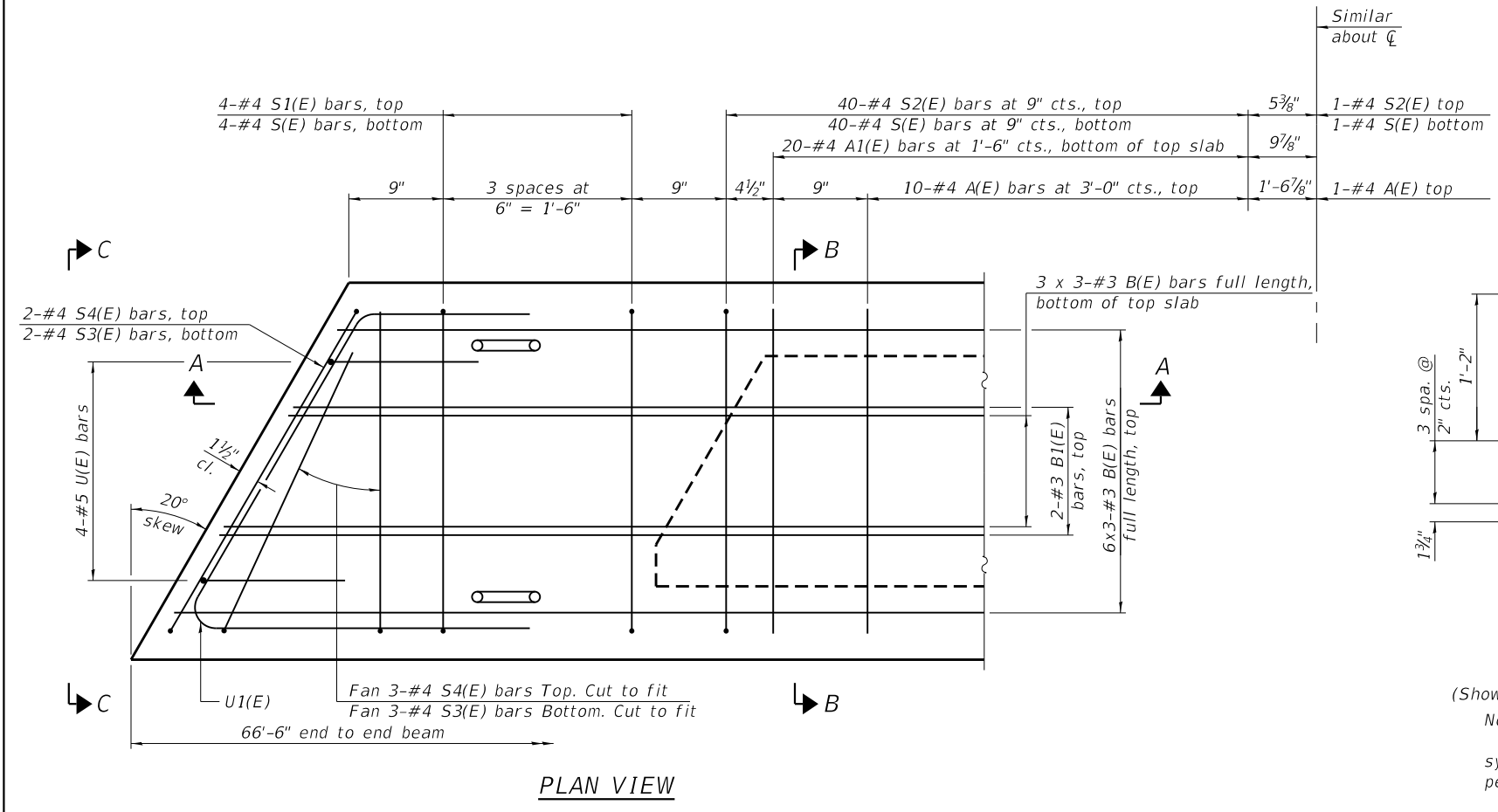
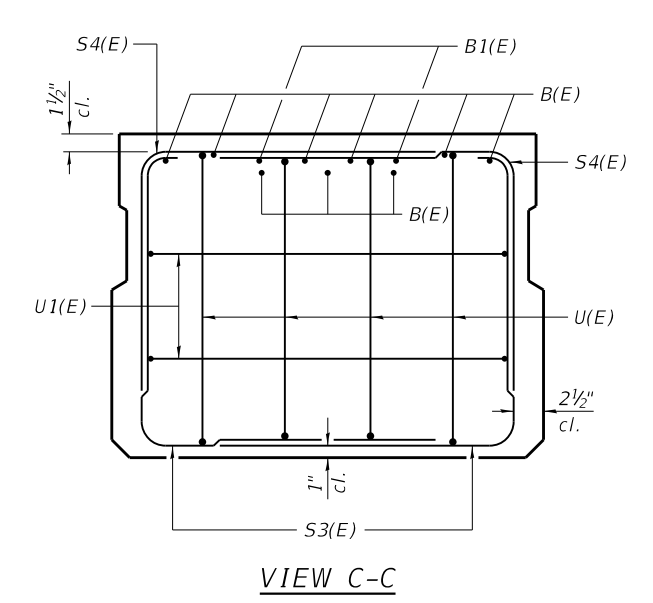
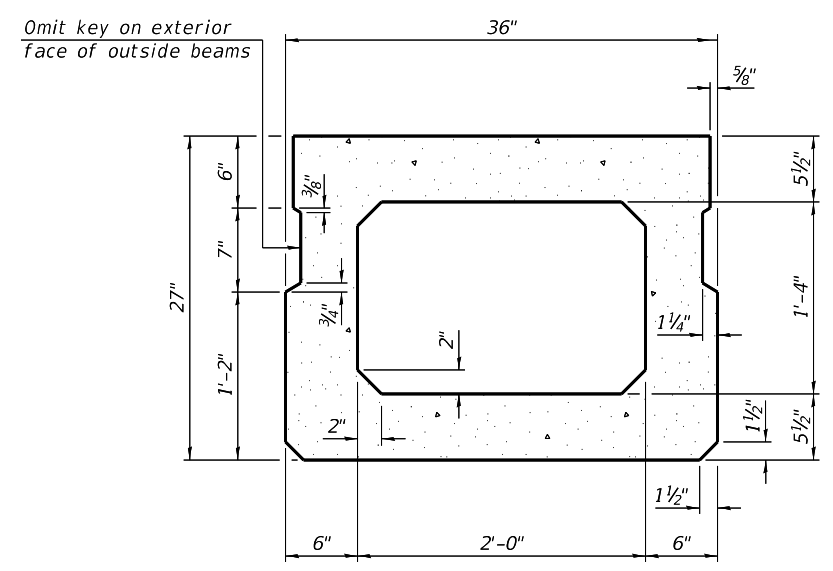
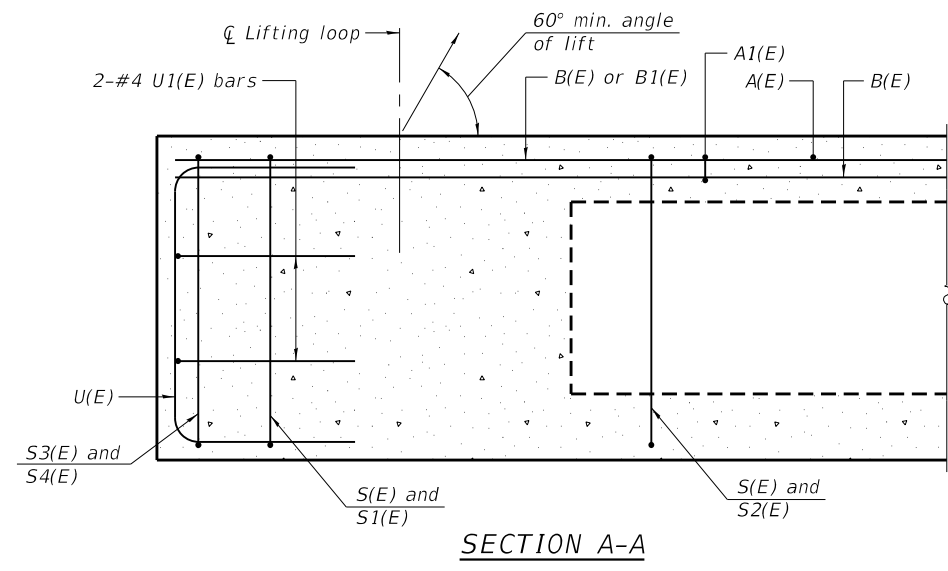
*Included in the cost of Pipe Underdrains for Structures. (See Special Provisions).

**After beams are in place, 1/2" holes shall be drilled into the Substructure, and the dowel rods grouted in place and allowed to cure (Min. 24 Hrs.) prior to grouting shear key.

Note:

Outlet pipe underdrains to East only, as directed by the Engineer.

REVISIONS		
REV. NO.	DESCRIPTION	DATE



BAR LIST
ONE BEAM ONLY
(For information only)

Bar	No.	Size	Length	Shape
A(E)	21	#4	2'-7"	—
A1(E)	40	#4	2'-10"	~
B(E)	27	#3	23'-1"	—
B1(E)	4	#3	10'-0"	—
S(E)	89	#4	7'-5"	┌
S1(E)	8	#4	5'-11"	┌
S2(E)	81	#4	6'-2"	┌
S3(E)	10	#4	4'-10"	┌
S4(E)	10	#4	4'-1"	┌
U(E)	8	#5	4'-6"	┌
U1(E)	4	#4	6'-1"	┌

Note:
Place the number of strands specified in each row symmetrically about the centerline of beam in the permissible strand locations shown.

Note:
Spacing of S(E) and S2(E) bars may be adjusted up to 4" in the immediate area of the transverse tie diaphragms to miss the block outs for the transverse ties.

MINIMUM BAR LAP
#3 bar = 1'-6"

Note:
See sheet 9 of 17 for additional details and Bill of Material.

FEHR GRAHAM
ENGINEERING & ENVIRONMENTAL
ILLINOIS DESIGN FIRM NO. 184-003525
© 2022 FEHR-GRAHAM

ILLINOIS
IOWA
WISCONSIN

OWNER/DEVELOPER:
LIVINGSTON COUNTY HWY. DEPT.
1705 S. MANLOVE STREET
PONTIAC, IL 61764

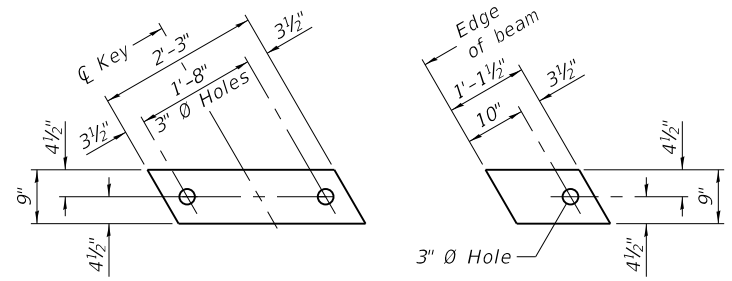
PROJECT AND LOCATION:
SECTION II-14106-03-BR
TR 24
OVER MOLE CREEK
LONG POINT ROAD DISTRICT

DRAWN BY: FG
APPROVED BY: MCB
DATE: 9/6/2023
SCALE: NTS

REVISIONS		
REV. NO.	DESCRIPTION	DATE

DRAWING:
27" X 36" PPC DECK BEAM
STRUCTURE NUMBER 053-4210
SET TYPE:
C:\C3D\21\21-109\Plans\21-109I deck beam.dgn

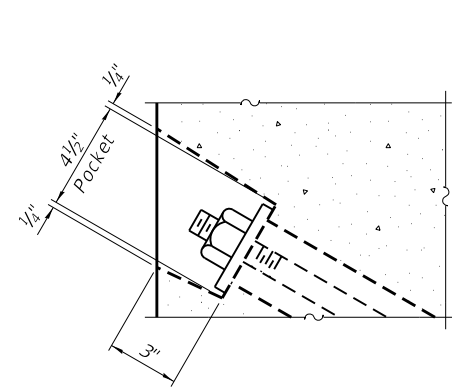
JOB NUMBER:
21-109I
SHEET NUMBER:
8 of 17



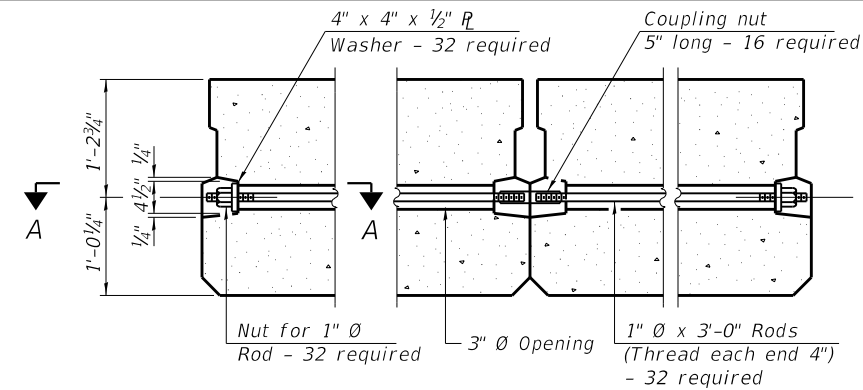
FABRIC BEARING PAD
(Interior)

FABRIC BEARING PAD
(Exterior)

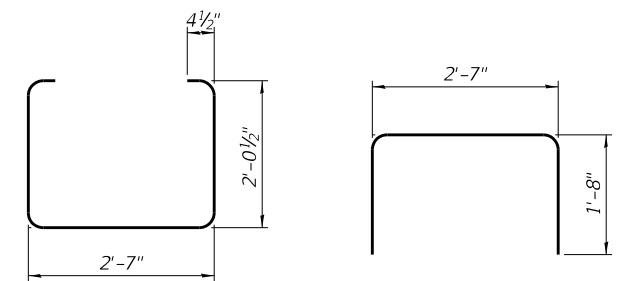
FIXED



SECTION A-A

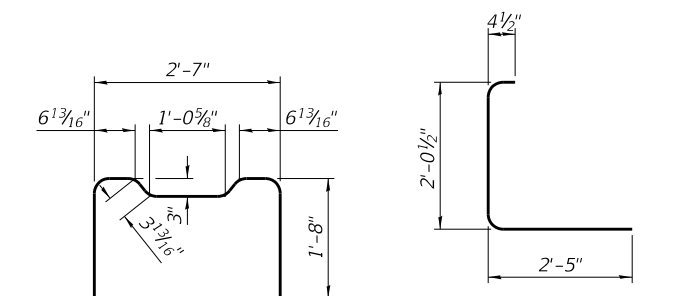


TYPICAL TRANSVERSE TIE ASSEMBLY



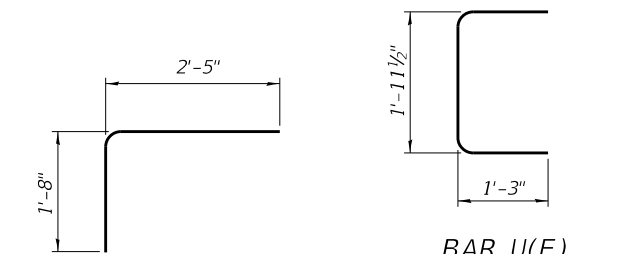
BAR S(E)

BAR S1(E)



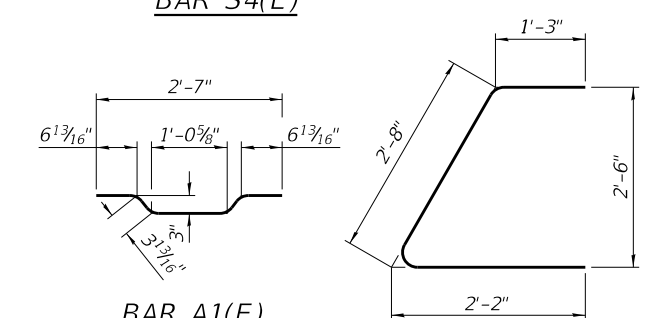
BAR S2(E)

BAR S3(E)



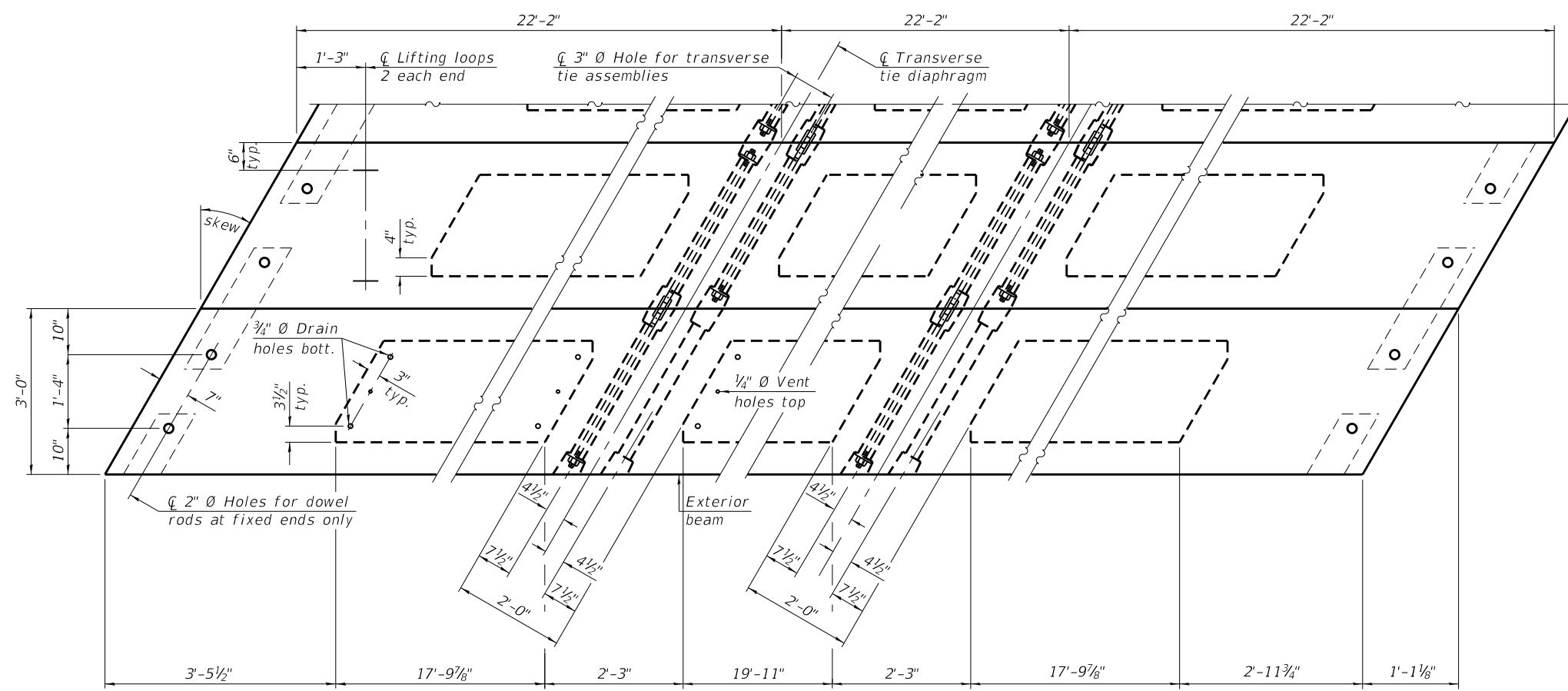
BAR S4(E)

BAR U(E)



BAR A1(E)

BAR U1(E)



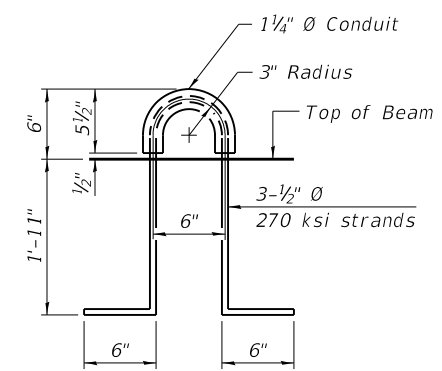
PLAN VIEW

NOTES

Prestressing steel shall be uncoated high strength, low relaxation 7-wire strand, Grade 270. The nominal diameter shall be 1/2" and the nominal cross-sectional area shall be 0.153 sq. in.
 The 1" rods in the transverse tie assembly shall be tightened to a snug fit and the threads set. Pockets on exterior faces of bridge shall be filled with grout after transverse tie assembly is in place.
 Two 1/8" fabric adjusting shims of the dimensions of the exterior bearing pad shall be provided for each bearing pad location.
 A minimum 2 1/2" diameter lifting pin shall be used to engage the lifting loops during handling.
 Corrosion Inhibitor, per Article 1020.05(b)(10) and 1021.07 of the Standard Specifications, shall be used in the concrete for precast prestressed concrete deck beams.
 Compressive strength of prestressed concrete, f'c, shall be 6000 psi.
 Compressive strength of prestressed concrete at release, f'ci, shall be 5000 psi.

Note:
Connect beams in pairs with the transverse tie configuration shown.

PDD-2736-L 1-1-2020



LIFTING LOOP DETAIL

BILL OF MATERIAL

Precast Prestressed Conc. Deck Bms. (27" depth)	Sq. Ft.	1,796
---	---------	-------



ILLINOIS
IOWA
WISCONSIN

OWNER/DEVELOPER:
LIVINGSTON COUNTY HWY. DEPT.
1705 S. MANLOVE STREET
PONTIAC, IL 61764

PROJECT AND LOCATION:
SECTION II-I4106-03-BR
TR 24
OVER MOLE CREEK
LONG POINT ROAD DISTRICT

DRAWN BY: FG
APPROVED BY: MCB
DATE: 9/6/2023
SCALE: NTS

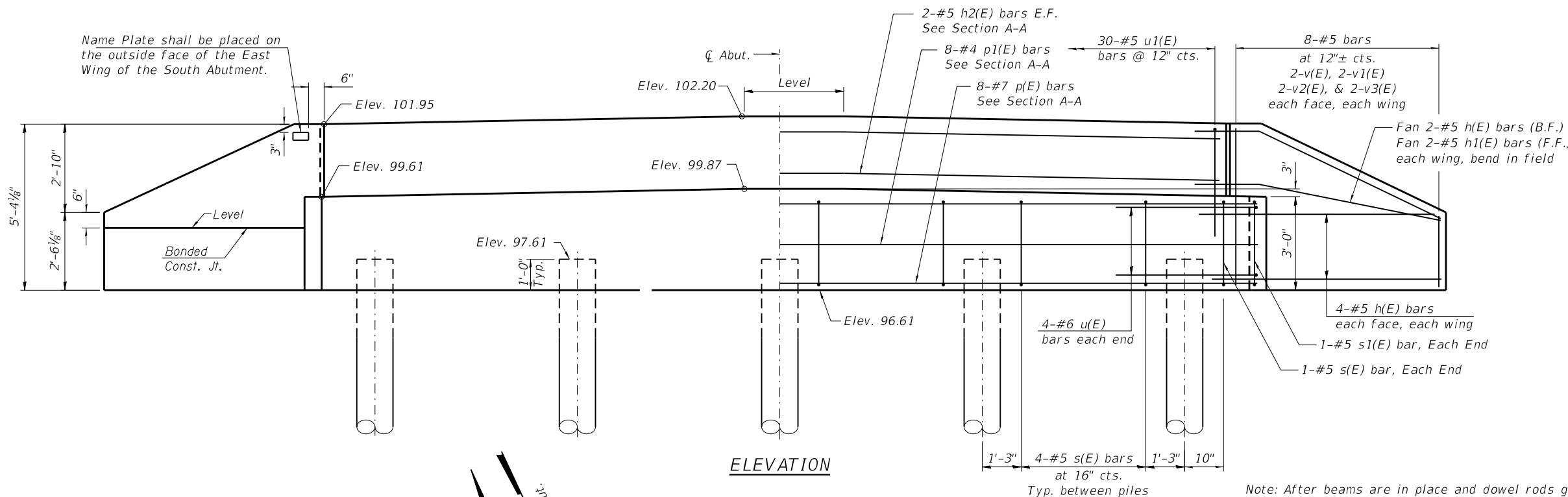
REVISIONS		
REV. NO.	DESCRIPTION	DATE

DRAWING:
27" X36" PPC DECK BEAM DETAILS
STRUCTURE NUMBER 053-4210

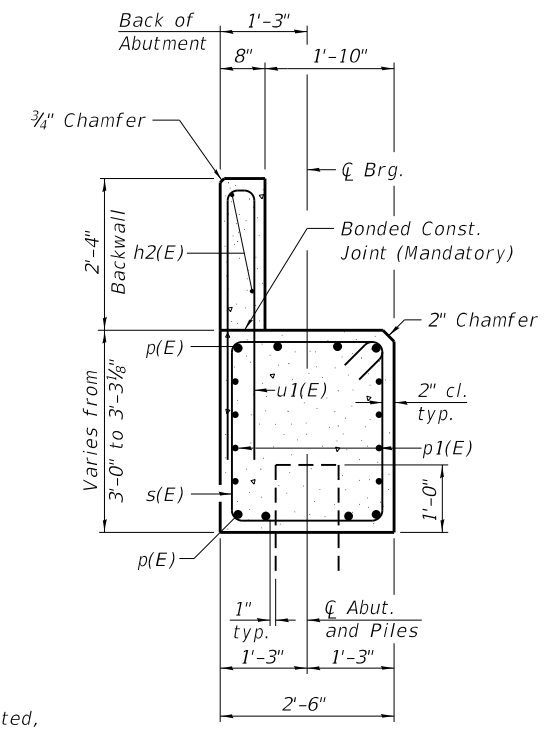
SET TYPE:
C:\C3D\21\21-109\Plans\21-109I\deck beam details.dgn

JOB NUMBER:
21-109I

SHEET NUMBER:
9 of 17



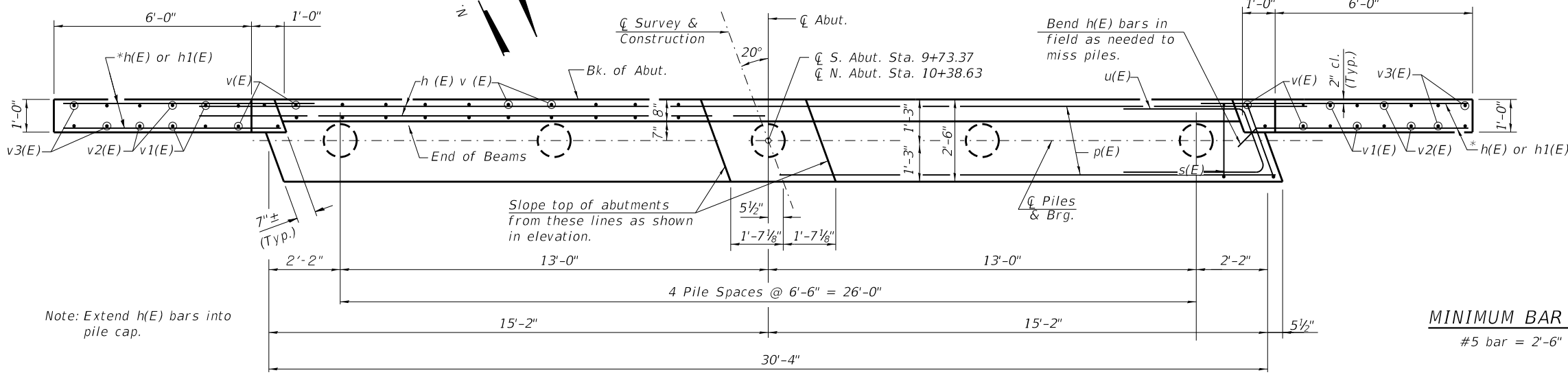
ELEVATION



SECTION A-A

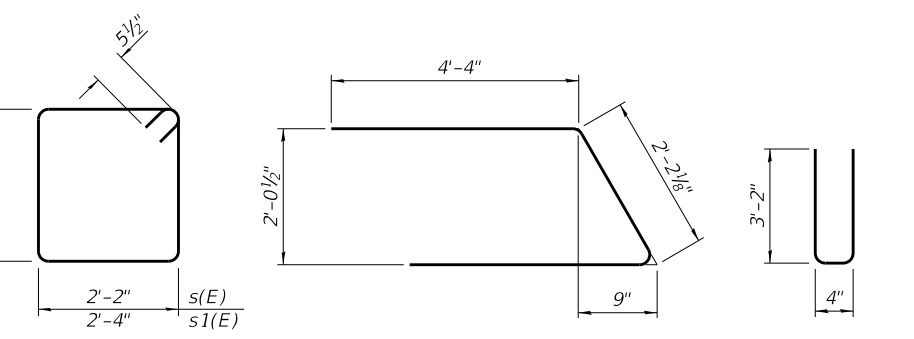
(Dimensions are at right angles to abutment)

Note: After beams are in place and dowel rods grouted, the backwall and the portions of the wingwalls above the Bonded Construction Joint shall be poured.



PLAN

MINIMUM BAR LAP
#5 bar = 2'-6"



BARS s(E) & s1(E) **BAR u(E)** **BAR u1(E)**

PILE DATA

Type & Size.....Metal Shell 12"Ø x 0.25
 No. Req'd.....**10
 Nominal Required Bearing.....274 k/pile
 Factored Resistance Available.....151 k/pile
 * Estimated Length.....21 ft. N. Abut., 21 ft. S. Abut.

* Piles shall be driven to a minimum tip elevation of 77.40 (19.21' min. driven)
 ** Includes 1 Test Pile driven in a permanent location at each Abutment.

BILL OF MATERIAL

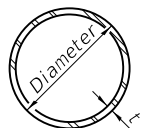
(2 Abutments)

Bar	No.	Size	Length	Shape
h(E)	40	#5	8'-3"	—
h1(E)	8	#5	6'-9"	—
h2(E)	4	#5	30'-0"	—
p(E)	16	#7	30'-0"	—
p1(E)	16	#4	30'-0"	—
s(E)	36	#5	10'-7"	□
s1(E)	4	#5	10'-11"	□
u(E)	16	#6	10'-11"	⌒
u1(E)	60	#5	6'-8"	⌒
v(E)	16	#5	4'-11"	—
v1(E)	16	#5	4'-1"	—
v2(E)	16	#5	3'-2"	—
v3(E)	16	#5	2'-4"	—

Concrete Structures	Cu. Yd.	24.6
Reinforcement Bars, Epoxy Coated	Pound	3,320
Furnishing Metal Shell Piles 12X 0.25	Foot	168
Driving Piles	Foot	168
Test Pile, Metal Shell	Each	2

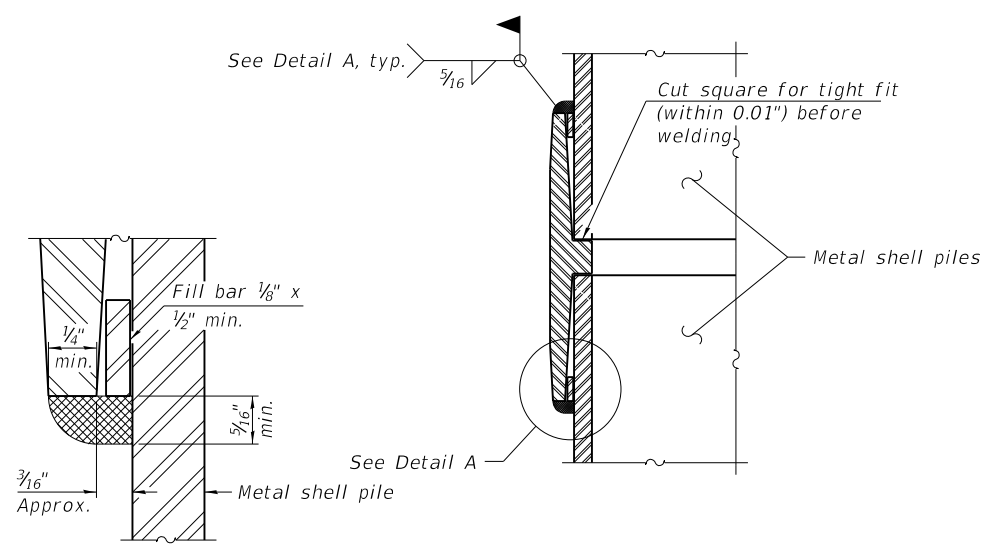
Notes:
 For details of piles, see sheet 12 of 17.
 Cast backwall and tops of wingwalls after beams have been erected.

REVISIONS		
REV. NO.	DESCRIPTION	DATE

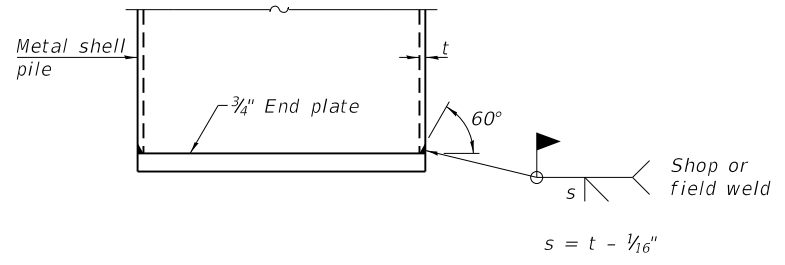


METAL SHELL PILE TABLE

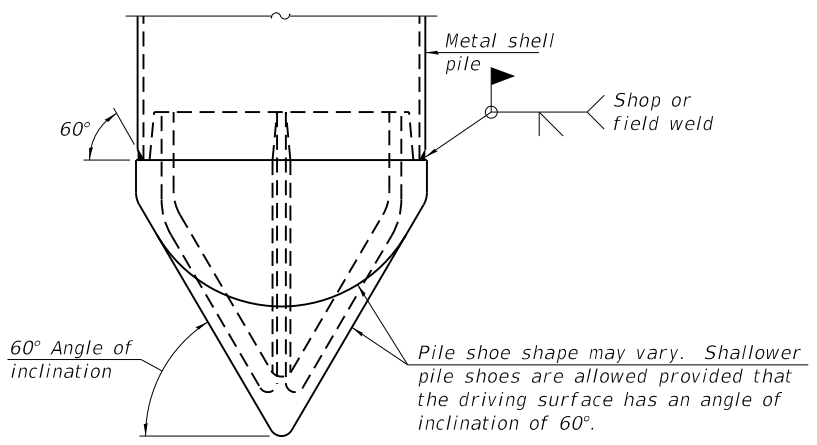
Designation and outside diameter	Wall thickness t	Weight per foot (Lbs./ft.)	Inside volume (yd. ³ /ft.)
PP12	0.250"	31.37	0.0267
PP14	0.250"	36.71	0.0368
PP14	0.312"	45.61	0.0361
PP16	0.312"	52.32	0.0478
PP16	0.375"	62.64	0.0470



DETAIL A



END PLATE ATTACHMENT

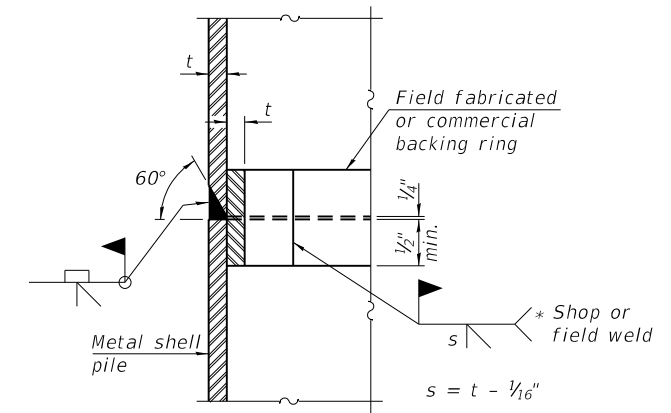


PILE SHOE ATTACHMENT

(When called for on the plans, the Contractor shall furnish metal shell pile shoes consisting of a single piece conical pile point as shown. The pile shoes shall be cast in one piece steel according to either ASTM A 148 Grade 80-50 or AASHTO M 103 Grade 65-35 and shall provide full bearing over the full circumference of the metal shell pile. The pile shoe shall have tapered leads to assure proper alignment and fitting and shall be secured to the pile with a circumferential weld).

WELDED COMMERCIAL SPLICE

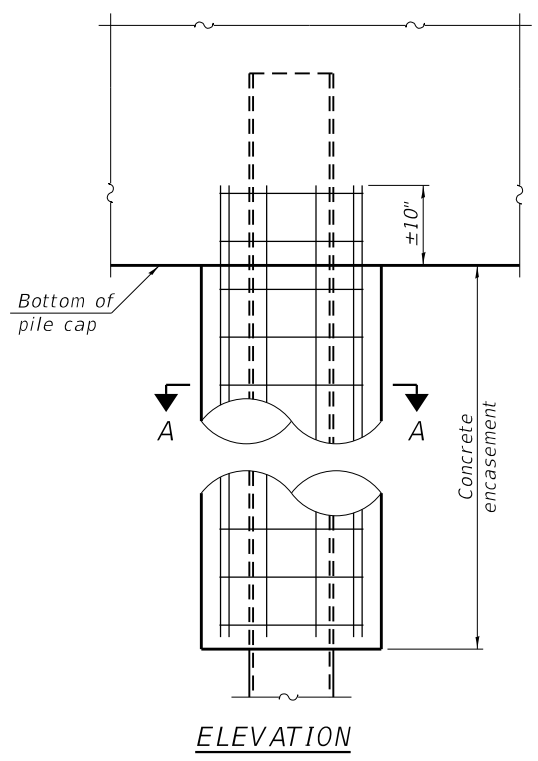
Notes:
 The $\frac{1}{8}" \times \frac{1}{2}"$ min. fill bar may be constructed of 2 bars with a $\frac{1}{8}"$ max. gap between them.
 Pile segments shall be driven to solid contact with splicer before welding.



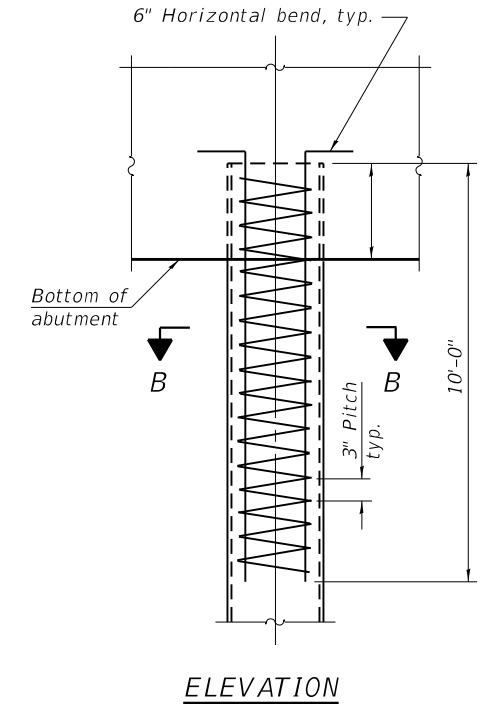
COMPLETE PENETRATION WELD SPLICE

* Field fabricated backing ring may be made from pile shell by removing segment to allow reducing circumference and vertically rejoin with partial joint penetration weld.

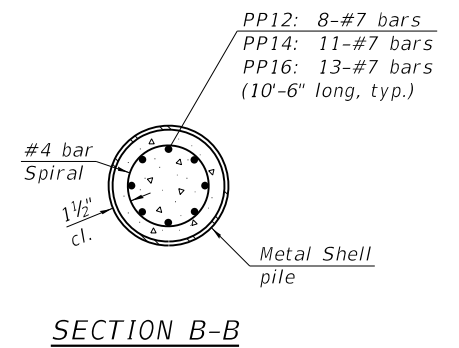
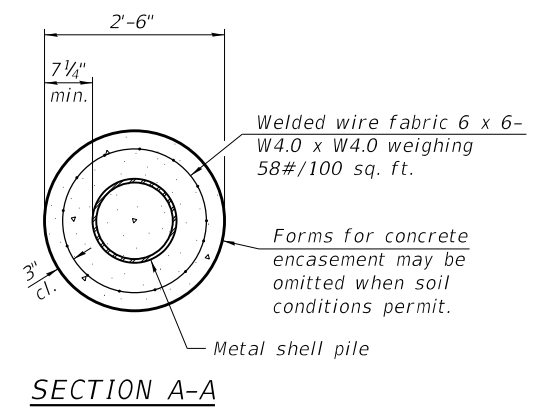
Note:
 The metal shell piles shall be according to Article 1006.05 of the Standard Specifications.



INDIVIDUAL PILE CONCRETE ENCASUREMENT
 (When specified)



REINFORCEMENT AT ABUTMENTS
 (Omit when concrete encasement is specified)



F-MS 1-1-2020



ILLINOIS
 IOWA
 WISCONSIN

OWNER/DEVELOPER:
 LIVINGSTON COUNTY HWY. DEPT.
 1705 S. MANLOVE STREET
 PONTIAC, IL 61764

PROJECT AND LOCATION:
 SECTION II-I4106-03-BR
 TR 24
 OVER MOLE CREEK
 LONG POINT ROAD DISTRICT

DRAWN BY: FG
 APPROVED BY: MCB
 DATE: 9/6/2023
 SCALE: NTS

REVISIONS		
REV. NO.	DESCRIPTION	DATE

DRAWING:
 METAL SHELL PILE DETAILS
 STRUCTURE NUMBER 053-4210

SET TYPE:
 G:\C3D\21\21-109\Plans\21-1091 piles.dgn

JOB NUMBER:
 21-1091

SHEET NUMBER:
 12 of 17

Midwest Testing Services, Inc.
3705 Progress Blvd.
Peru, IL 61354
Phone: 815-223-6696
Fax: 815-223-6659
e-mail: mts37@comcast.net

BORING LOG
Sheet 1 of 3
Client: Coombe-Bloxdorf, PC
Project Name: Section 11-14106-03-BR
Project Site: Long Point Road District
Livingston County, IL.
Boring No. B-1
Surface Elev. 100.2
Auger Depth 61'
Rotary Depth NA
Start Date 07/06/13
Finish Date 07/06/13

Location: 28' North of center of existing bridge
6' west of centerline of road

(DEPTH) *ELEV	DESCRIPTION OF MATERIALS	Graphic Log	Depth in feet	SAMPLES					DRILLED BY
				Sample No.	Sample Type	Qu (TSF)	N Value (Blows)	Bulge / Shear	
100.20									
99.20			1						
98.20			2						
97.20			3	1	SS	1.2	7	B	19
96.20	Stiff Black And Brown Clay (Fill)		4						
95.20			5						
94.20			6	2	SS	1.5	8	B	21
93.20			7						
92.20			8	3	SS	1.0	6	B	25
91.20			9						
90.20			10	4	SS	1.1	7	B	23
89.20	Stiff Gray Clay Till		11						
88.20			12						
87.20			13	5	SS	1.6	8	B	22
86.20			14						
85.20			15	6	SS	3.6	21	B	14
84.20	Very Stiff Gray Clay Till		16						
83.20			17						
82.20			18	7	SS	3.3	26	S	12
81.20			19						
80.20			20	8	SS	---	42	---	---

Groundwater Data: Static water level after auger removal - Elevation 84.5.
Comments:

Midwest Testing Services, Inc.
3705 Progress Blvd.
Peru, IL 61354
Phone: 815-223-6696
Fax: 815-223-6659
e-mail: mts37@comcast.net

BORING LOG
Sheet 2 of 3
Client: Coombe-Bloxdorf, PC
Project Name: Section 11-14106-03-BR
Project Site: Long Point Road District
Livingston County, IL.
Boring No. B-1
Surface Elev. 100.2
Auger Depth 61'
Rotary Depth NA
Start Date 07/06/13
Finish Date 07/06/13

Location: 28' North of center of existing bridge
6' west of centerline of road

(DEPTH) *ELEV	DESCRIPTION OF MATERIALS	Graphic Log	Depth in feet	SAMPLES					DRILLED BY
				Sample No.	Sample Type	Qu (TSF)	N Value (Blows)	Bulge / Shear	
79.20									
78.20			22						
77.20			23	9	SS	---	31	---	---
76.20			24						
75.20	Medium Gray Fine Sand		25						
74.20			26	10	SS	---	30	---	---
73.20			27						
72.20			28	11	SS	---	27	---	---
71.20			29						
70.20			30	12	SS	---	27	---	---
69.20			31						
68.20	Dense Gray Fine Sand		32						
67.20			33	13	SS	---	32	---	---
66.20			34						
65.20			35	14	SS	---	35	---	---
64.20			36						
63.20			37						
62.20			38						
61.20			39						
60.20			40						
59.20			41	15	SS	---	33	---	---

Groundwater Data: Static water level after auger removal - Elevation 84.5.
Comments:

Midwest Testing Services, Inc.
3705 Progress Blvd.
Peru, IL 61354
Phone: 815-223-6696
Fax: 815-223-6659
e-mail: mts37@comcast.net

BORING LOG
Sheet 3 of 3
Client: Coombe-Bloxdorf, PC
Project Name: Section 11-14106-03-BR
Project Site: Long Point Road District
Livingston County, IL.
Boring No. B-1
Surface Elev. 100.2
Auger Depth 61'
Rotary Depth NA
Start Date 07/06/13
Finish Date 07/06/13

Location: 28' North of center of existing bridge
6' west of centerline of road

(DEPTH) *ELEV	DESCRIPTION OF MATERIALS	Graphic Log	Depth in feet	SAMPLES					DRILLED BY
				Sample No.	Sample Type	Qu (TSF)	N Value (Blows)	Bulge / Shear	
58.20									
57.20			43						
56.20			44						
55.20	Dense Gray Fine Sand		45						
54.20			46	16	SS	---	36	---	---
53.20			47						
52.20			48						
51.20			49	17	SS	---	34	---	---
50.20			50						
49.20			51						
48.20			52						
47.20			53						
46.20			54						
45.20			55						
44.20			56	18	SS	---	35	---	---
43.20			57						
42.20			58						
41.20			59						
40.20			60						
39.20			61	24	SS	---	31	---	---
38.20			62						

Groundwater Data: Static water level after auger removal - Elevation 84.5.
Comments:

Midwest Testing Services, Inc.
3705 Progress Blvd.
Peru, IL 61354
Phone: 815-223-6696
Fax: 815-223-6659
e-mail: mts37@comcast.net

BORING LOG
Sheet 1 of 3
Client: Coombe-Bloxdorf, PC
Project Name: Section 11-14106-03-BR
Project Site: Long Point Road District
Livingston County, IL.
Boring No. B-2
Surface Elev. 100.2
Auger Depth 61'
Start Date 07/06/13
Rotary Depth NA
Finish Date 07/06/13

Location: 20' South of center of existing bridge
8' west of centerline of road

(DEPTH) ELEV.	DESCRIPTION OF MATERIALS	Graphic Log	Depth in feet	SAMPLES					DRILLED BY	REMARKS	
				Sample No.	Sample Type	Qu. (TSF)	N Value (Blows)	Bulge / Shear			Moisture (%)
100.20											
99.20			1								
98.20			2								
97.20			3	1	SS	1.7	10	S	15		
96.20			4								
95.20			5	2	SS	1.5	12	S	14		
94.20	Stiff Brown Gravelly Clay (Fill)		6								
93.20			7								
92.20			8	3	SS	1.6	10	B	17		
91.20			9								
90.20			10	4	SS	1.3	8	B	23		
89.20			11								
88.20			12								
87.20	Very Stiff Brownish Gray Clay		13	5	SS	2.0	13	B	19		
86.20			14								
85.20			15	6	SS	2.1	13	B	18		
84.20	Very Stiff Gray Clay Till		16								
83.20			17								
82.20			18	7	SS	2.9	18	B	15		
81.20			19								
80.20	Dense Gray Fine Sand		20	8	SS	--	38	--	--		

Groundwater Data: Static water level after auger removal - Elevation 84.5.
Comments:

Midwest Testing Services, Inc.
3705 Progress Blvd.
Peru, IL 61354
Phone: 815-223-6696
Fax: 815-223-6659
e-mail: mts37@comcast.net

BORING LOG
Sheet 2 of 3
Client: Coombe-Bloxdorf, PC
Project Name: Section 11-14106-03-BR
Project Site: Long Point Road District
Livingston County, IL.
Boring No. B-2
Surface Elev. 100.2
Auger Depth 61'
Start Date 07/06/13
Rotary Depth NA
Finish Date 07/06/13

Location: 20' South of center of existing bridge
8' west of centerline of road

(DEPTH) ELEV.	DESCRIPTION OF MATERIALS	Graphic Log	Depth in feet	SAMPLES					DRILLED BY	REMARKS	
				Sample No.	Sample Type	Qu. (TSF)	N Value (Blows)	Bulge / Shear			Moisture (%)
79.20											
78.20			22								
77.20			23	9	SS	--	33	--	--		
76.20			24								
75.20			25								
74.20			26	10	SS	--	36	--	--		
73.20			27								
72.20			28	11	SS	--	38	--	--		
71.20	Dense Gray Fine Sand		29								
70.20			30								
69.20			31	12	SS	--	31	--	--		
68.20			32								
67.20			33	13	SS	--	32	--	--		
66.20			34								
65.20			35								
64.20			36	14	SS	--	35	--	--		
63.20			37								
62.20			38								
61.20			39								
60.20			40								
59.20			41	15	SS	--	34	--	--		

Groundwater Data: Static water level after auger removal - Elevation 84.5.
Comments:

Midwest Testing Services, Inc.
3705 Progress Blvd.
Peru, IL 61354
Phone: 815-223-6696
Fax: 815-223-6659
e-mail: mts37@comcast.net

BORING LOG
Sheet 3 of 3
Client: Coombe-Bloxdorf, PC
Project Name: Section 11-14106-03-BR
Project Site: Long Point Road District
Livingston County, IL.
Boring No. B-2
Surface Elev. 100.2
Auger Depth 61'
Start Date 07/06/13
Rotary Depth NA
Finish Date 07/06/13

Location: 20' South of center of existing bridge
8' west of centerline of road

(DEPTH) ELEV.	DESCRIPTION OF MATERIALS	Graphic Log	Depth in feet	SAMPLES					DRILLED BY	REMARKS	
				Sample No.	Sample Type	Qu. (TSF)	N Value (Blows)	Bulge / Shear			Moisture (%)
58.20											
57.20			43								
56.20			44								
55.20			45								
54.20			46	16	SS	--	31	--	--		
53.20			47								
52.20			48								
51.20			49								
50.20			50								
49.20	Dense Gray Fine Sand		51	17	SS	--	38	--	--		
48.20			52								
47.20			53								
46.20			54								
45.20			55								
44.20			56	18	SS	--	34	--	--		
43.20			57								
42.20			58								
41.20			59								
40.20			60								
39.20			61	24	SS	--	34	--	--		
38.20			62								

Groundwater Data: Static water level after auger removal - Elevation 84.5.
Comments:



ILLINOIS
IOWA
WISCONSIN

OWNER/DEVELOPER:
LIVINGSTON COUNTY HWY. DEPT.
1705 S. MANLOVE STREET
PONTIAC, IL 61764

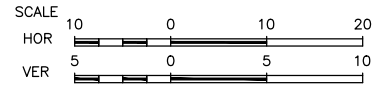
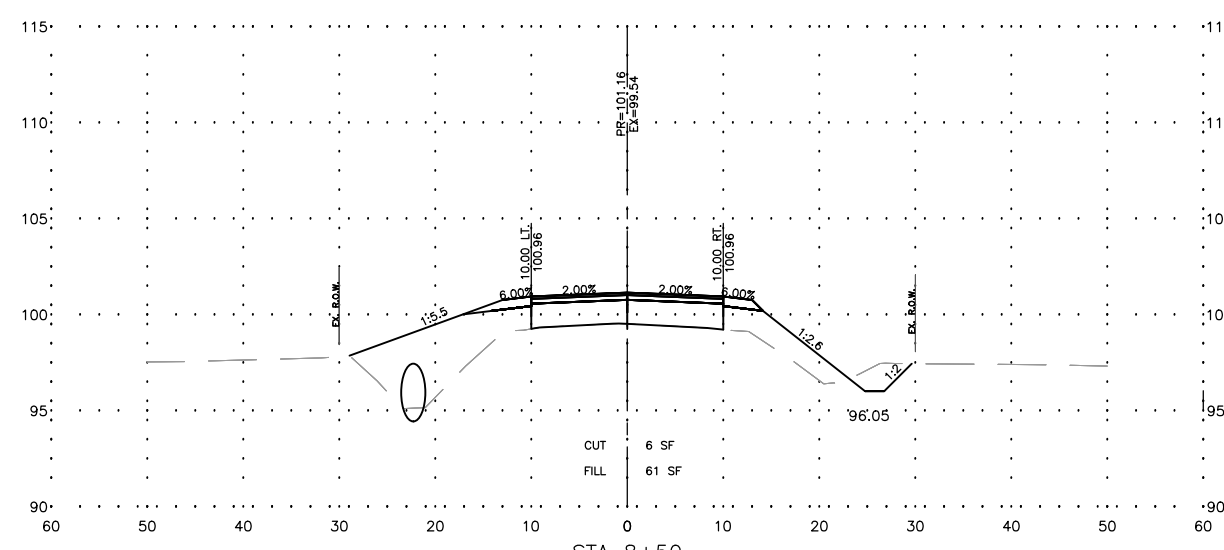
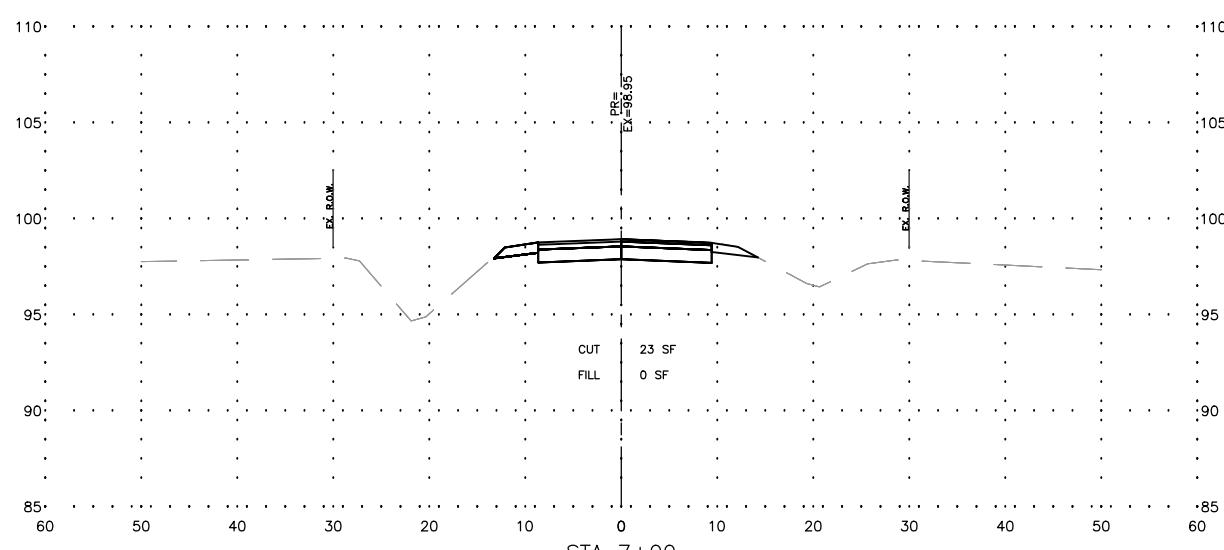
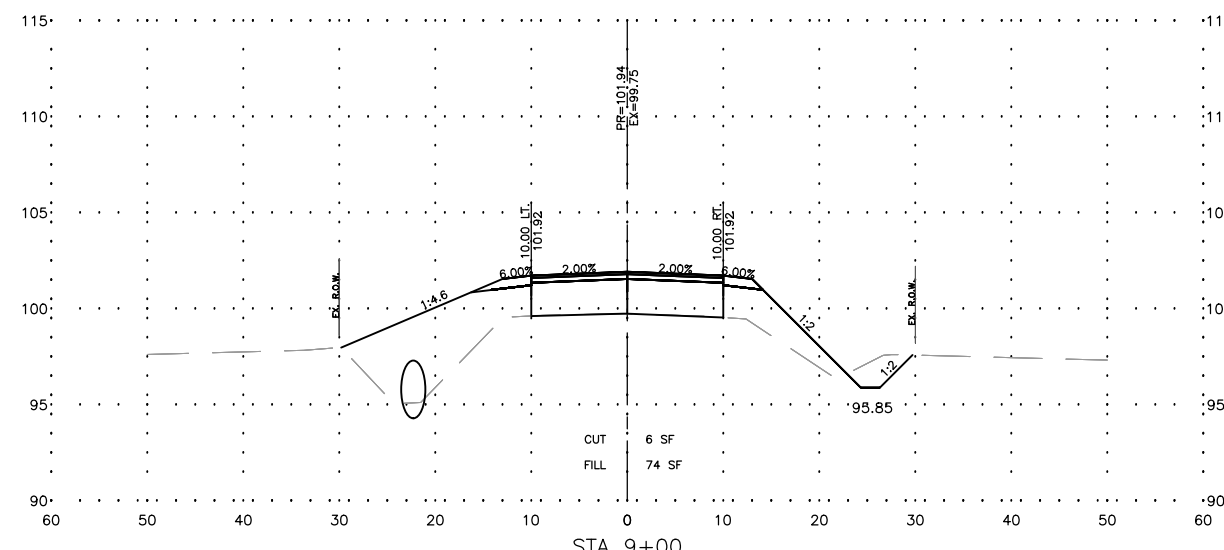
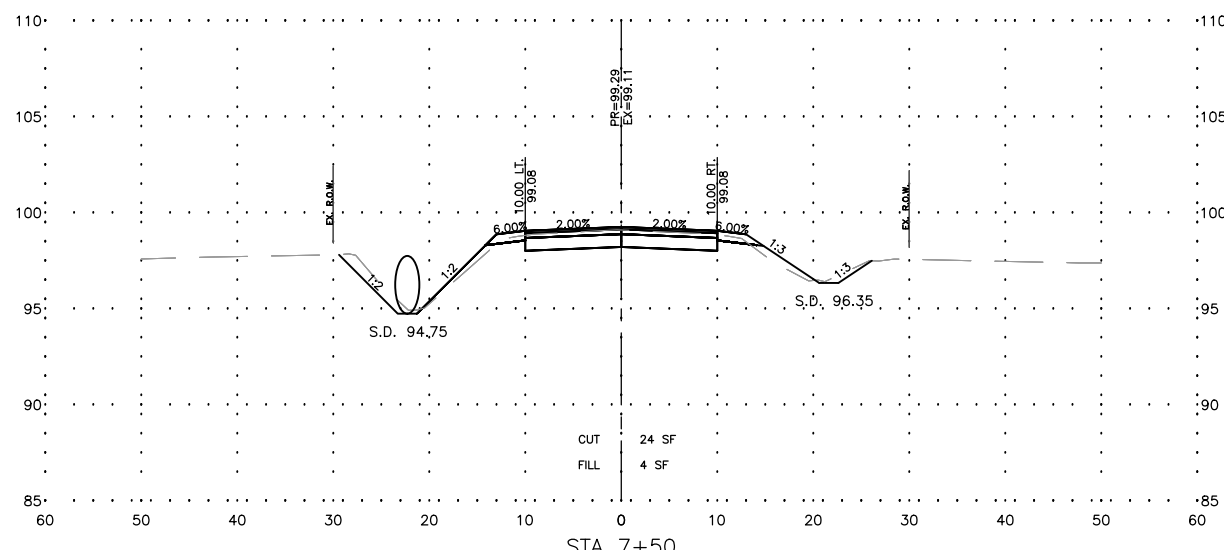
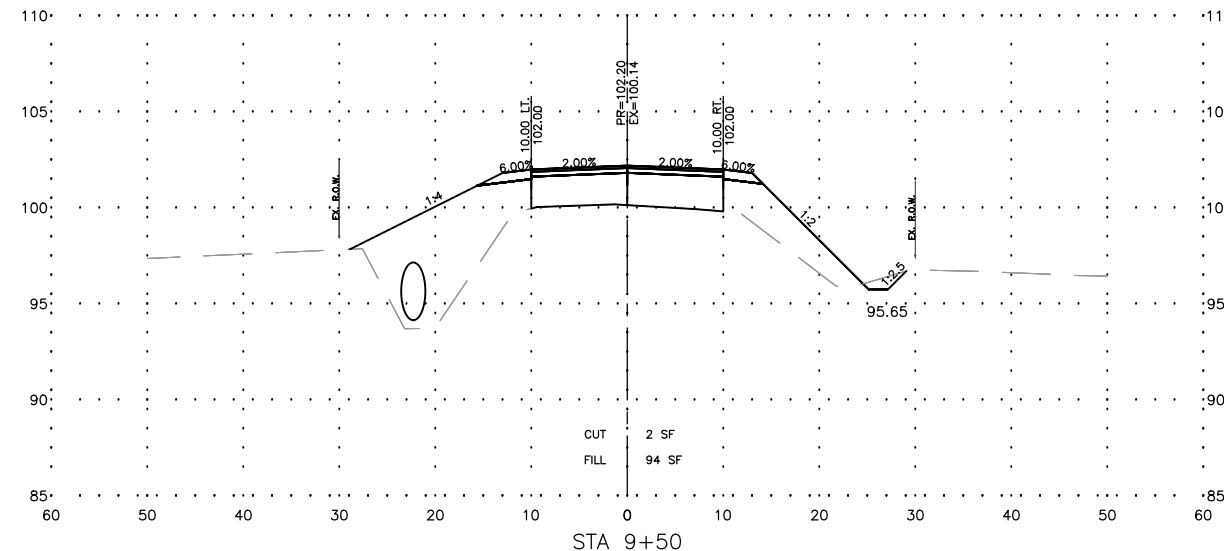
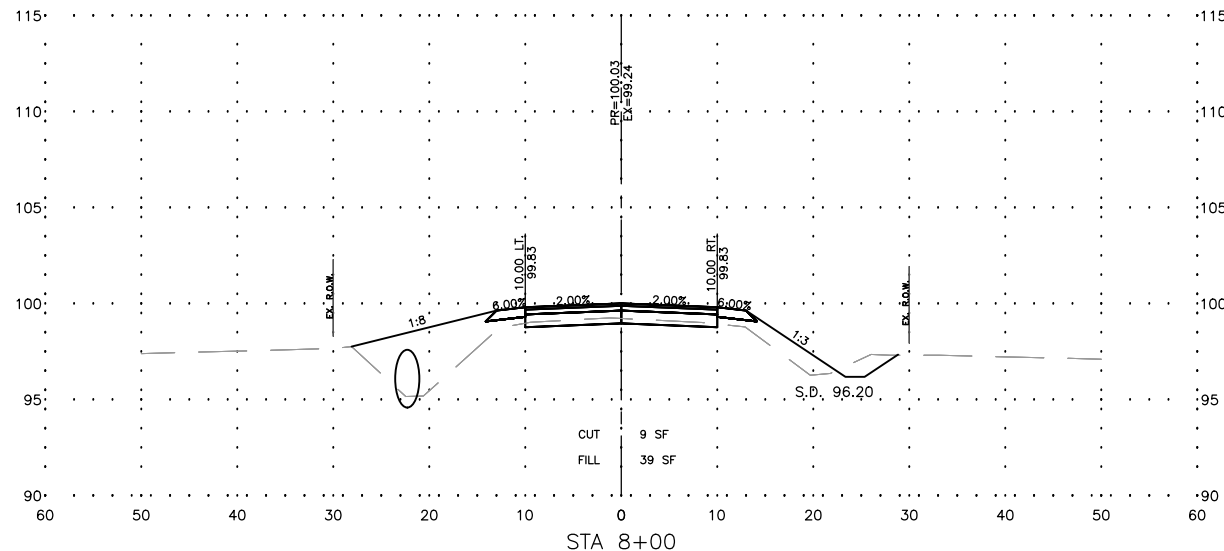
PROJECT AND LOCATION:
SECTION 11-14106-03-BR
TR 24
OVER MOLE CREEK
LONG POINT ROAD DISTRICT

DRAWN BY: FG
APPROVED BY: MCB
DATE: 9/6/2023
SCALE: NTS

REVISIONS		
REV. NO.	DESCRIPTION	DATE

DRAWING:
BORING LOGS
STRUCTURE NUMBER 053-4210
SET TYPE:
G:\C3D\21\21-109\Plans\21-1091 borings.dgn

JOB NUMBER:
21-1091
SHEET NUMBER:
14 of 17



FEHR GRAHAM
ENGINEERING & ENVIRONMENTAL
ILLINOIS DESIGN FIRM NO. 184-003525

ILLINOIS
IOWA
WISCONSIN

OWNER/DEVELOPER:
LIVINGSTON COUNTY HWY. DEPT.
1705 S. MANLOVE STREET
PONTIAC, IL 61764

PROJECT AND LOCATION:
SECTION 11-14106-03-BR
TR 24, OVER MOLE CREEK
LONG POINT ROAD DISTRICT

DRAWN BY: FG
APPROVED BY: MCB
DATE: 6/2/2023
SCALE: AS NOTED

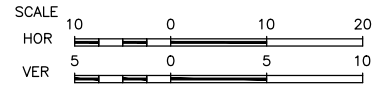
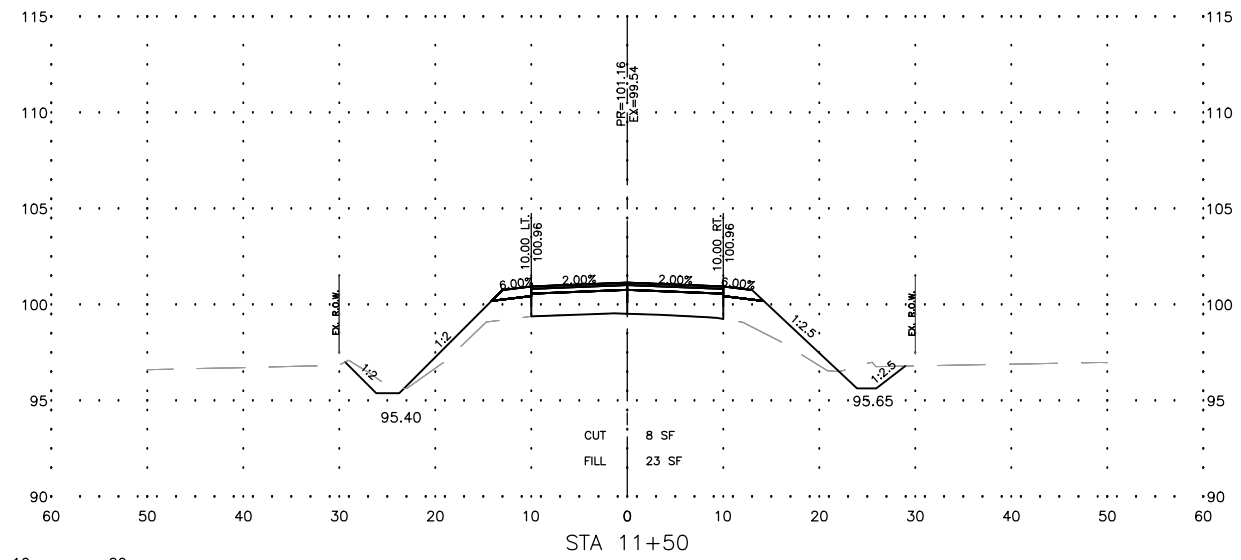
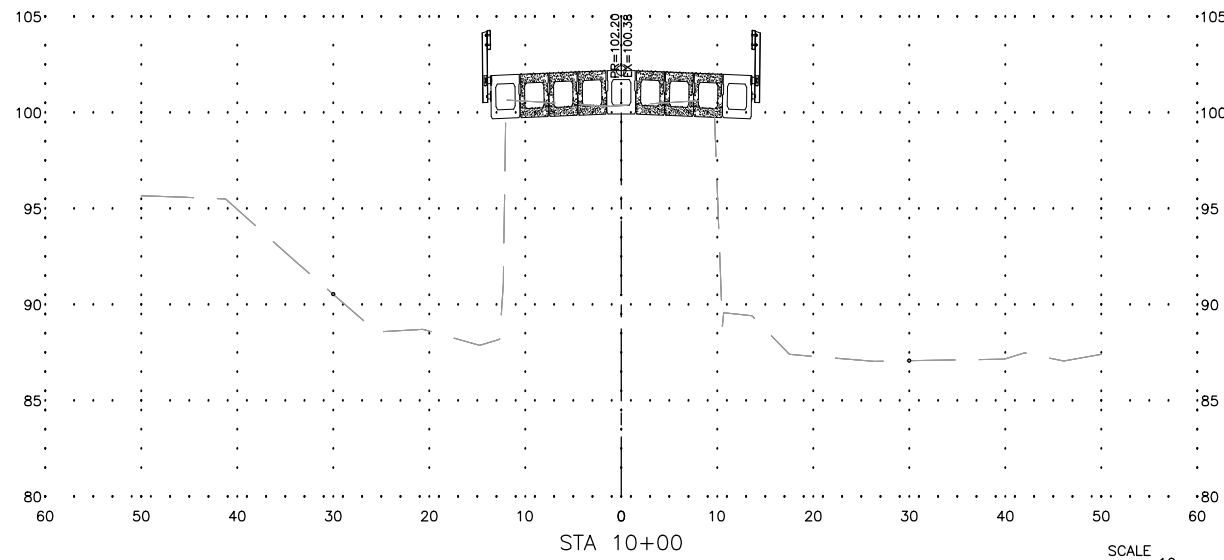
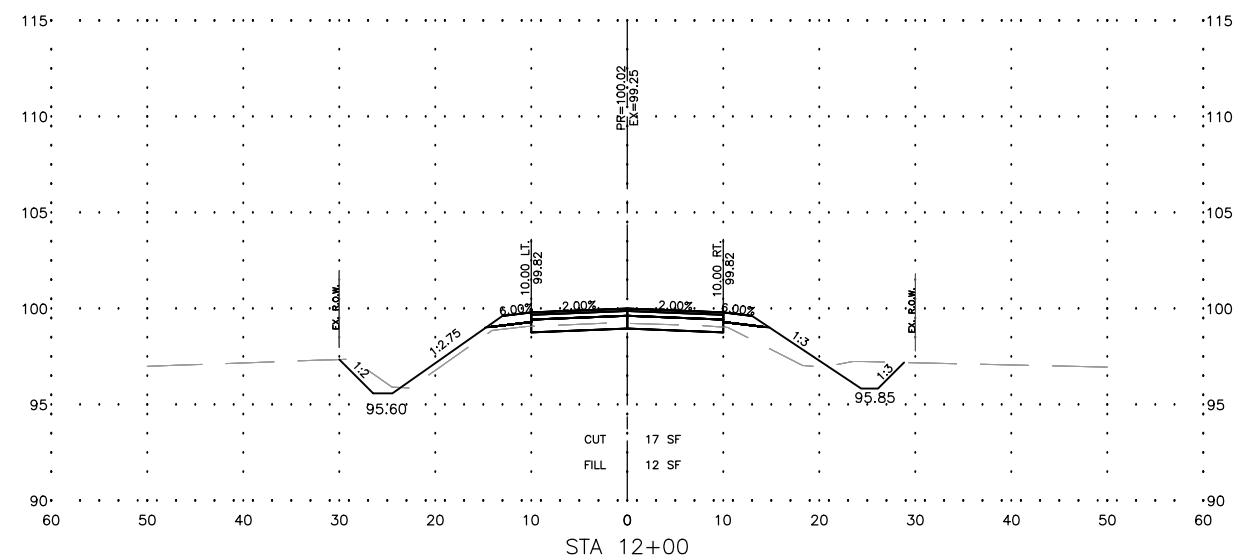
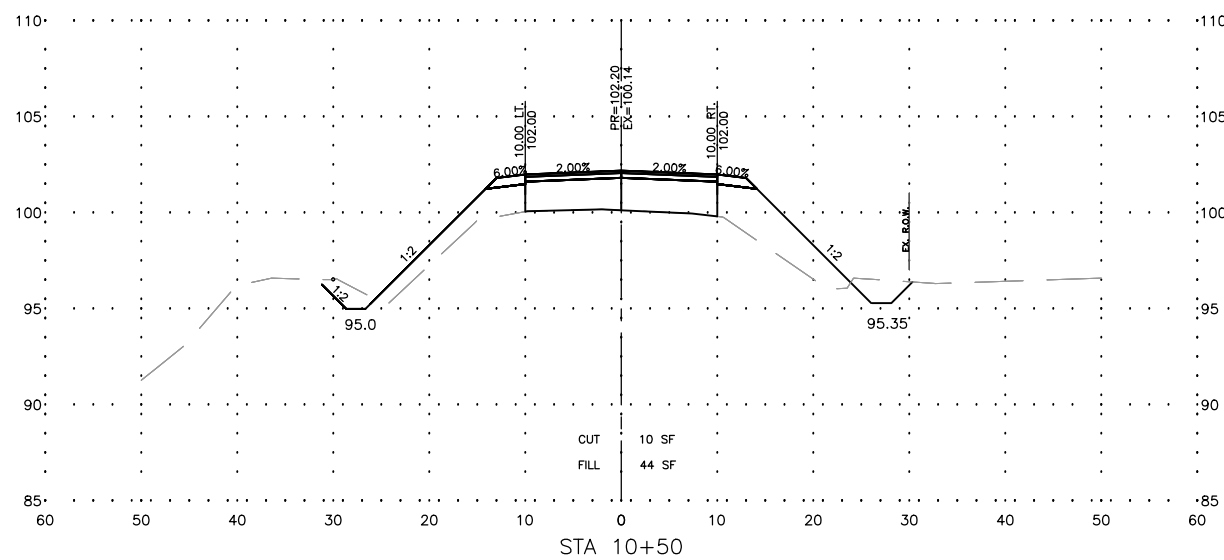
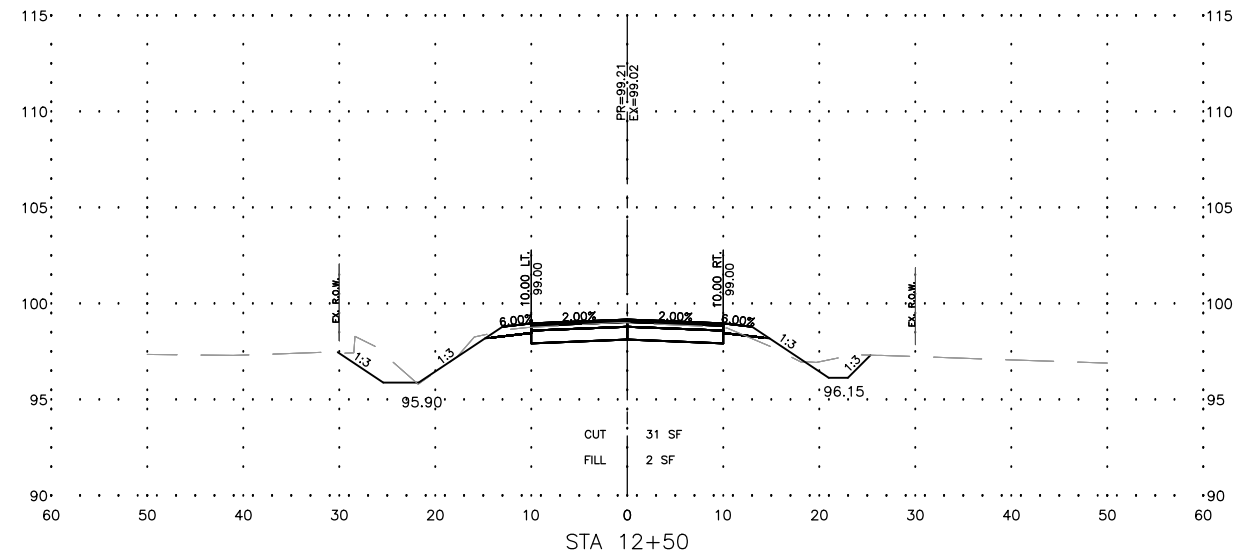
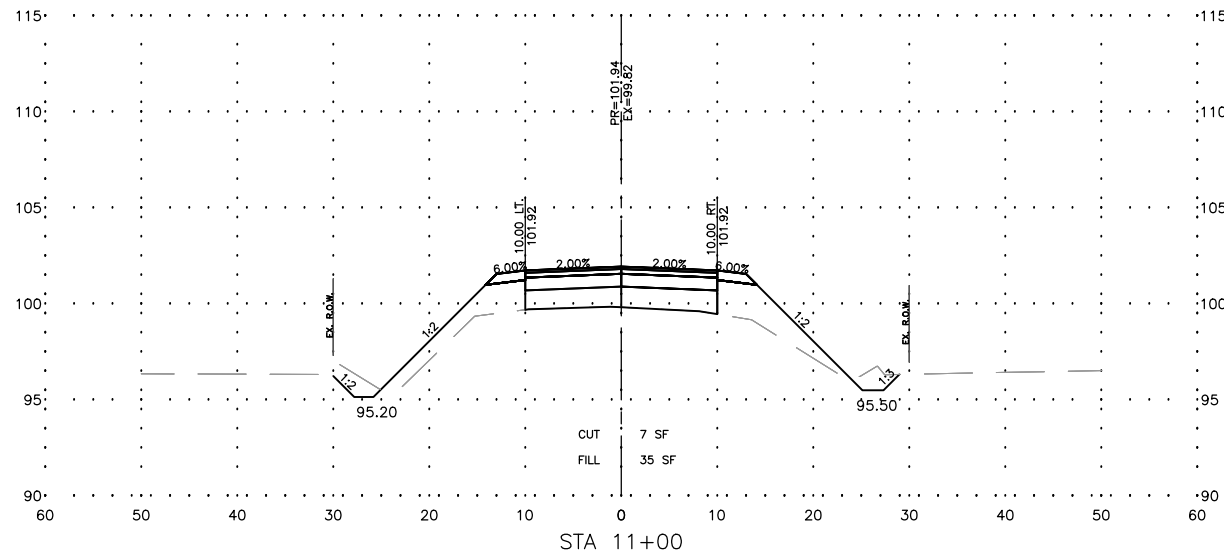
REVISIONS		
REV. NO.	DESCRIPTION	DATE

DRAWING:
FG-34X22 XSEC 10

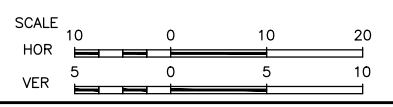
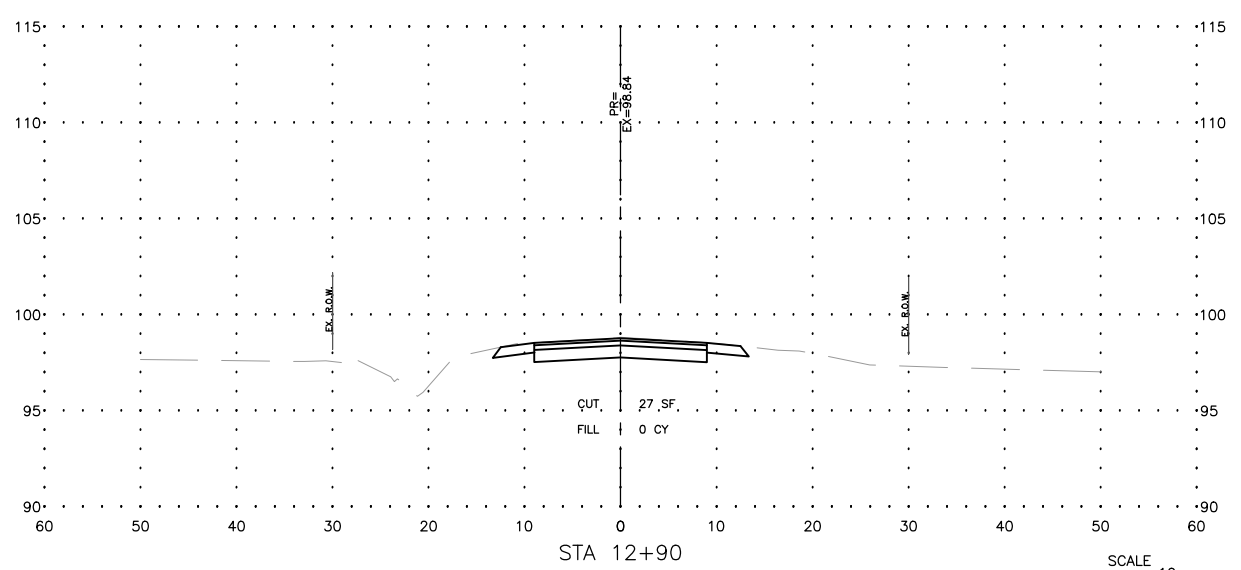
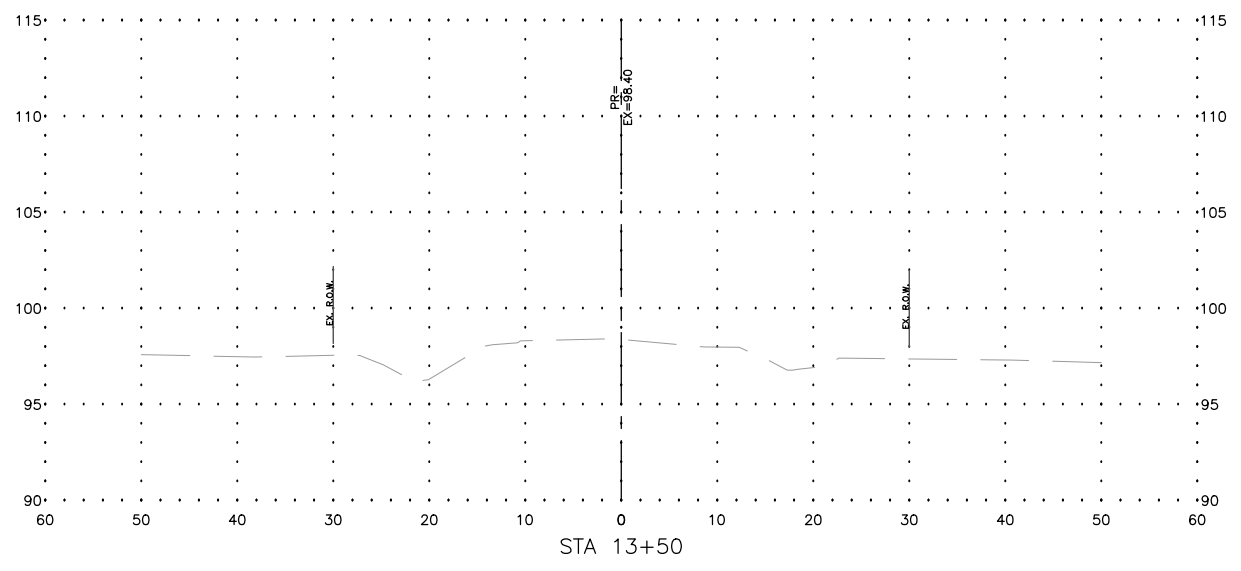
SET TYPE: PRELIMINARY
\\CHAMPAIGN\Drawings\C3D\21\21-1091\Plans\Surface and Sections.dwg, FG-34x22 XSEC 10

JOB NUMBER:
20-1091

SHEET NUMBER:
15 of 17



REVISIONS		
REV. NO.	DESCRIPTION	DATE



REVISIONS		
REV. NO.	DESCRIPTION	DATE