

STATE OF ILLINOIS  
DEPARTMENT OF TRANSPORTATION

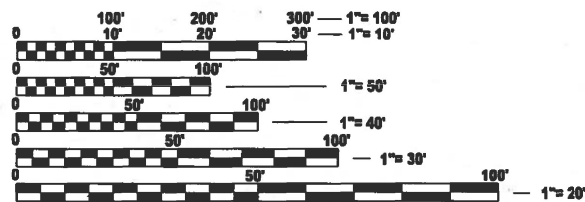
F.A.P. RTE.	SECTION	COUNTY	TOTAL SHEETS	SHEET NO.
607/351	FAP 607/351 23 PB	WILL	17	1
		ILLINOIS	CONTRACT NO. 62V27	

FOR INDEX OF SHEETS, SEE SHEET NO. 2

THIS PROJECT IS LOCATED IN THE CITY OF JOLIET, VILLAGE OF SHOREWOOD, AND CITY OF LOCKPORT.

TRAFFIC DATA

- IL 7 - OTHER PRINCIPAL ARTERIAL  
ADT (2021) = 20,800  
SPEED LIMIT = 40 MPH
- US 52 - OTHER PRINCIPAL ARTERIAL  
ADT (2021) = 25,100  
SPEED LIMIT = 40 MPH
- I-55 - INTERSTATE  
ADT (2022) = 74,200  
SPEED LIMIT = 65 MPH



FULL SIZE PLANS HAVE BEEN PREPARED USING STANDARD ENGINEERING SCALES. REDUCED SIZED PLANS WILL NOT CONFORM TO STANDARD SCALES. IN MAKING MEASUREMENTS ON REDUCED PLANS, THE ABOVE SCALES MAY BE USED.

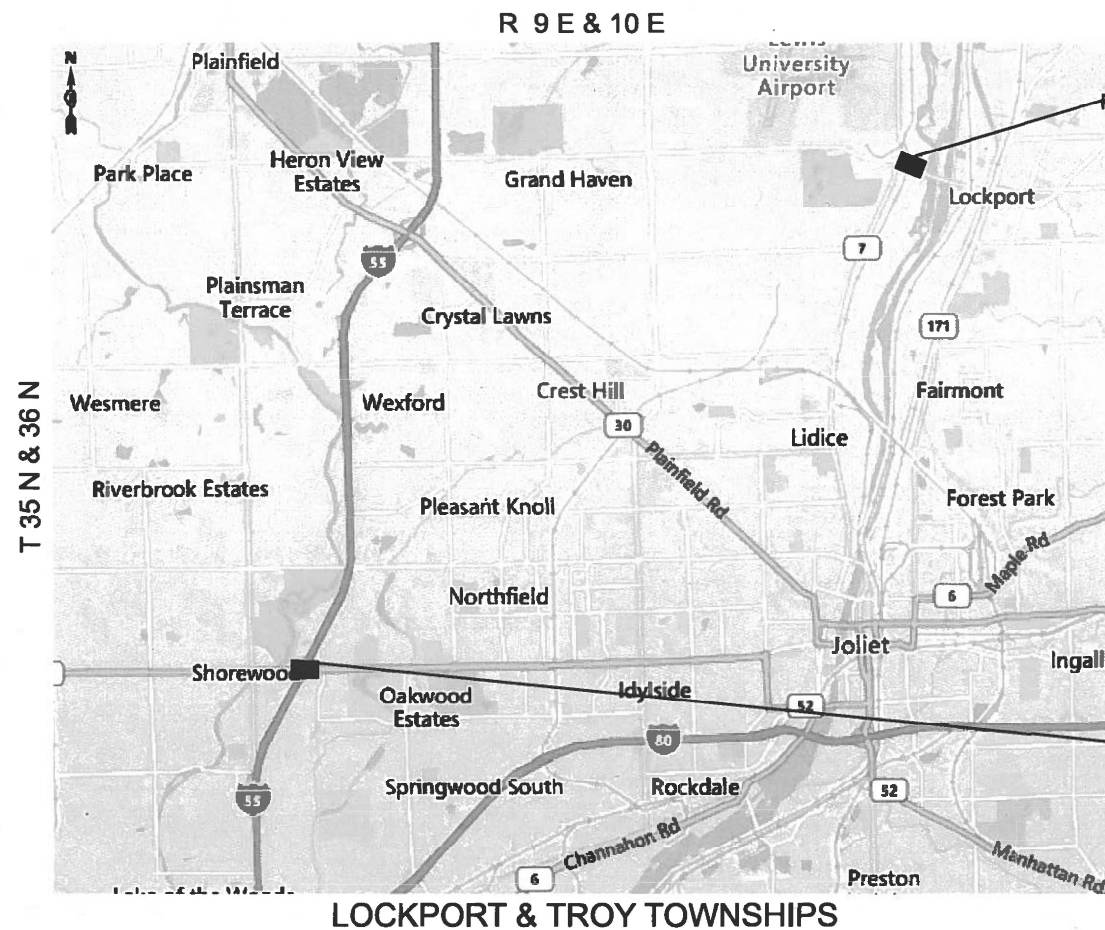
J.U.L.I.E.  
JOINT UTILITY LOCATION INFORMATION FOR EXCAVATION  
1-800-892-0123  
OR 811

PROJECT ENGINEER: RODRIGO LEDEZMA (847) 705-4580  
PROJECT MANAGER: J. ALAIN MIDY (847) 221-3056

CONTRACT NO. 62V27

PROPOSED  
HIGHWAY PLANS

- 1) F.A.P. ROUTE 607: US 52 OVER I-55
  - 2) F.A.P. ROUTE 351: IL 7 OVER EJ&E RAILROAD
- SECTION: FAP 607/351 23 PB  
PROJECT: NHPP-MKEK(583)  
BRIDGE PAINTING  
WILL COUNTY  
C-91-006-24



IMPROVEMENT LOCATION 2:  
IL 7 OVER EJ&E RAILROAD  
STRUCTURE NO.: 099-0274  
CITY OF LOCKPORT

IMPROVEMENT LOCATION 1:  
US 52 OVER I-55  
STRUCTURE NO.: 099-0139  
VILLAGE OF SHOREWOOD &  
CITY OF JOLIET

D-91-006-24



LOCATION OF SECTION INDICATED THUS: - [black rectangle] -

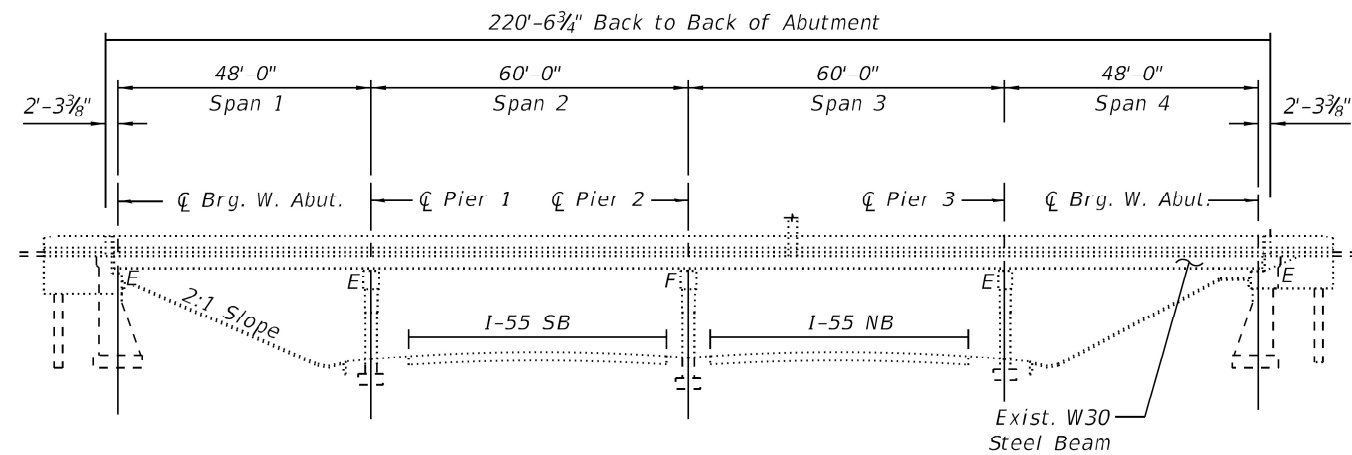
STATE OF ILLINOIS  
DEPARTMENT OF TRANSPORTATION

SUBMITTED October 11, 2023  
Jose Pineda Lopez REGIONAL ENGINEER  
December 8, 2023  
Jose Pineda Lopez ENGINEER OF DESIGN AND ENVIRONMENT  
December 8, 2023  
Stephen M. Smith DIRECTOR OF HIGHWAYS PROJECT IMPLEMENTATION

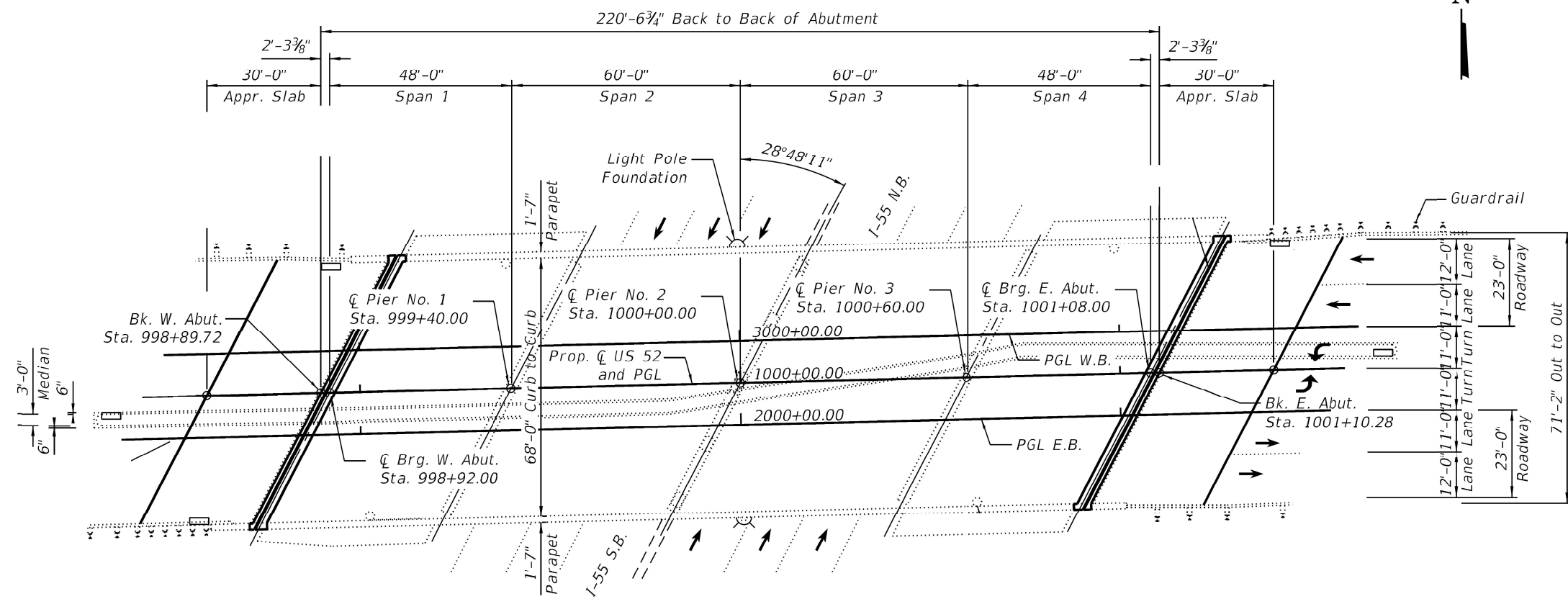
PRINTED BY THE AUTHORITY  
OF THE STATE OF ILLINOIS







ELEVATION



PLAN

FOR INFORMATION ONLY

MODEL: E:\d\p\m\c\1\Sheet1  
 FILE NAME: P:\MIDOT\Documents\DOT Office\District 1\ORD Project\10662\CADData\CADSheet1\10662-1-P-Plan.dgn

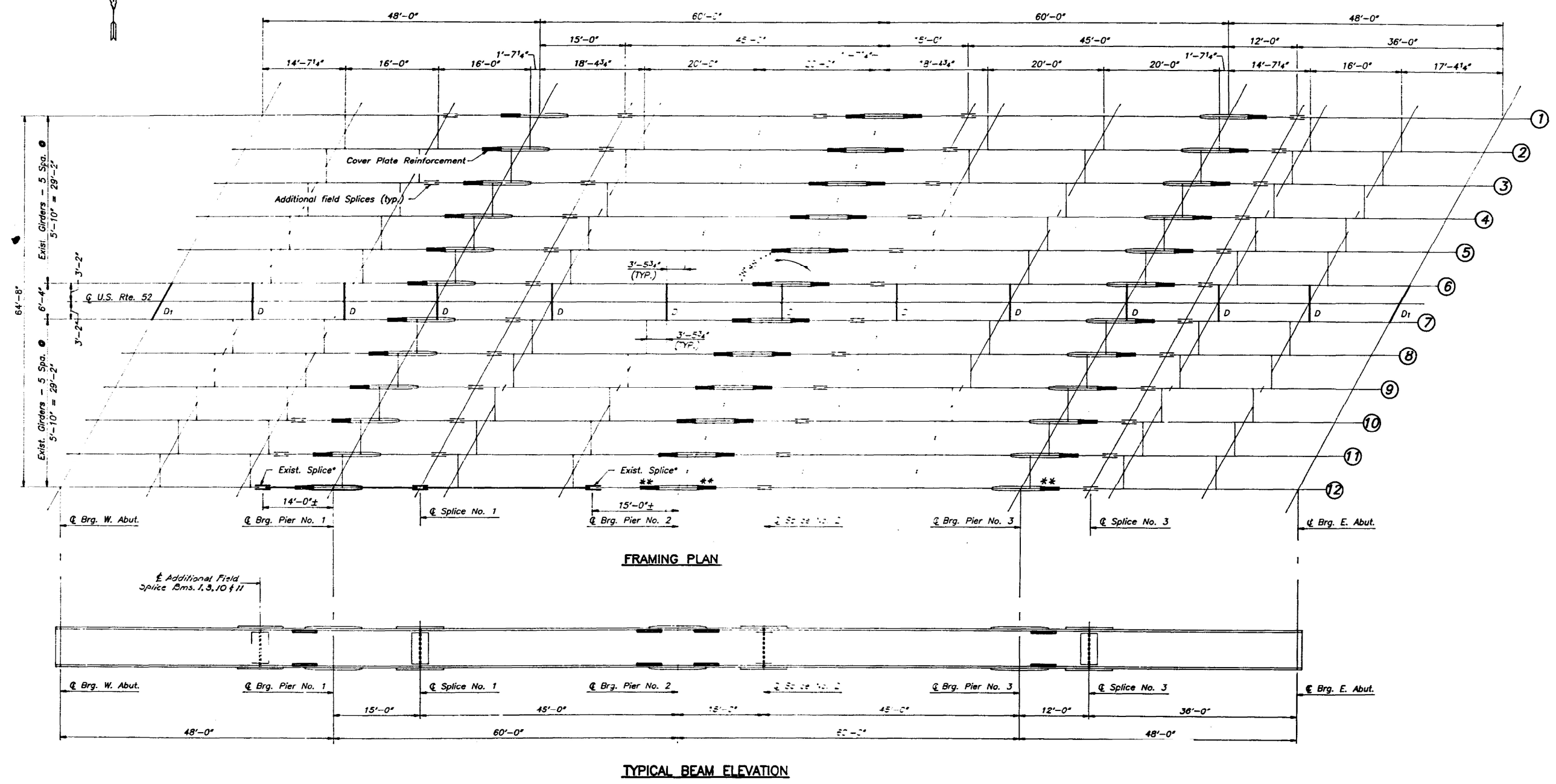
USER NAME = daniel.woods	DESIGNED -	REVISED -
	DRAWN -	REVISED -
PLOT SCALE = 0.16666633' / in.	CHECKED -	REVISED -
PLOT DATE = 10/20/2023	DATE -	REVISED -

STATE OF ILLINOIS  
 DEPARTMENT OF TRANSPORTATION

LOCATION 1: PLAN & ELEVATION (SN:099-0139)  
 US 52 OVER I-55

SCALE: Full Size 1 = 1 SHEET 1 OF 10 SHEETS STA. \_\_\_+\_\_\_ TO STA. \_\_\_+\_\_\_

F.A.P. RTE. 607/351	SECTION FAP 607/351 23 PB	COUNTY WILL	TOTAL SHEETS 17	SHEET NO. 4
CONTRACT NO. 62V27				
ILLINOIS FED. AID PROJECT				



FOR INFORMATION ONLY

MODEL: E:\d\p\m\m\c\Sheet1.dwg  
 FILE NAME: P:\MIDOT\Documents\DOT Office\District 1\ORD Project\099-0139\CADD\Sheet1.dwg

USER NAME = daniel.woods	DESIGNED -	REVISED -
DRAWN -	REVISED -	
PLOT SCALE = 0.16666633' / in.	CHECKED -	REVISED -
PLOT DATE = 10/20/2023	DATE -	REVISED -

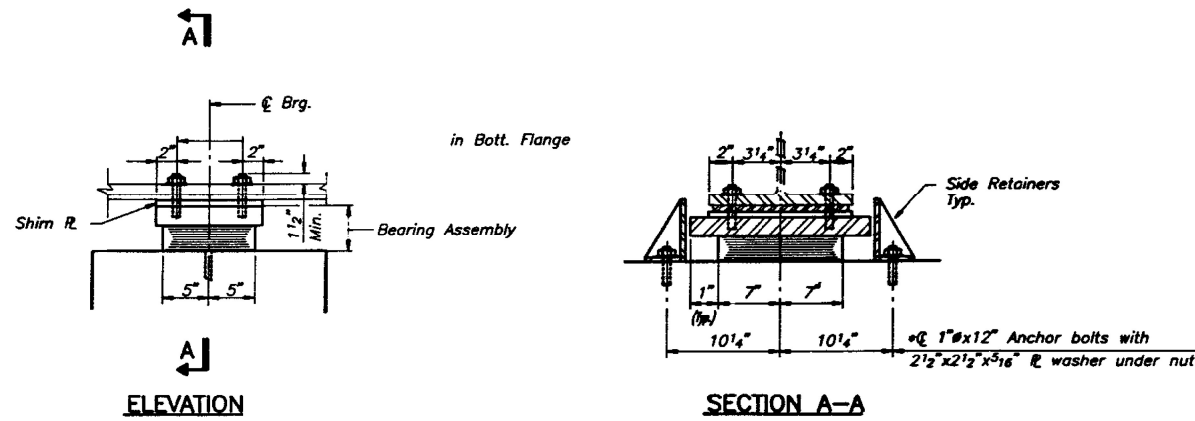
**STATE OF ILLINOIS**  
**DEPARTMENT OF TRANSPORTATION**

**LOC. 1: FRAMING PLAN & BEAM ELEVATION (SN: 099-0139)**  
**US 52 OVER I-55**

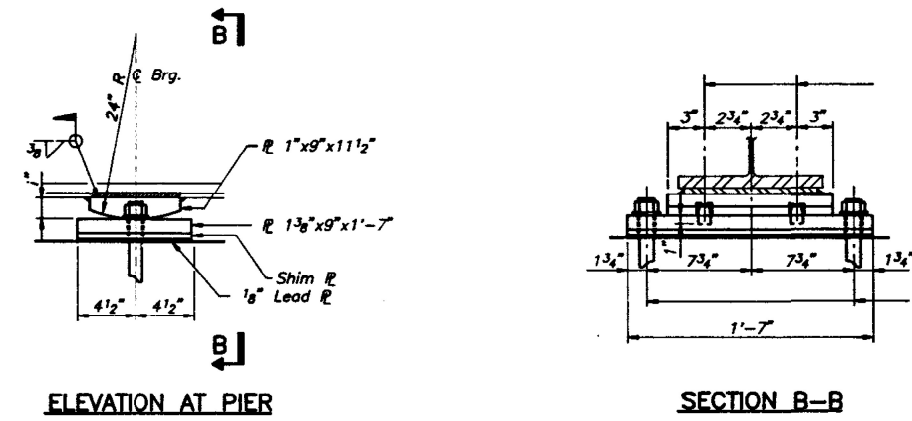
SCALE: Full Size 1 = 1 SHEET 2 OF 10 SHEETS STA. \_\_\_+\_\_\_ TO STA. \_\_\_+\_\_\_

F.A.P. RTE. 607/351	SECTION FAP 607/351 23 PB	COUNTY WILL	TOTAL SHEETS 17	SHEET NO. 5
			CONTRACT NO. 62V27	
ILLINOIS FED. AID PROJECT				

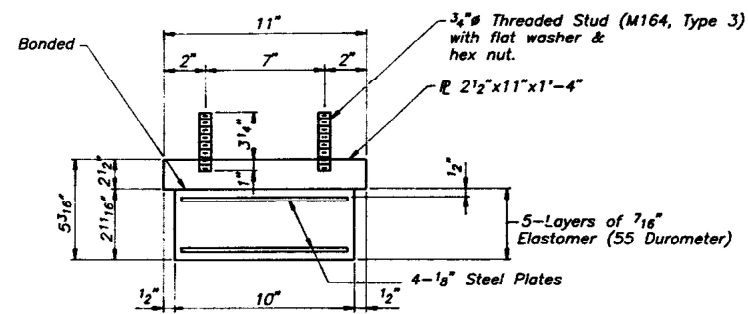




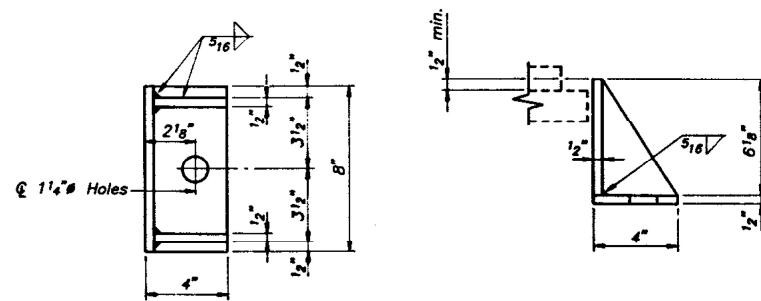
**ELASTOMERIC BEARING TYPE I  
AT PIERS 1 & 3**



**FIXED BEARING AT PIER NO. 2**



**BEARING ASSEMBLY PIERS 1 & 3**



**SIDE RETAINER**

**FOR INFORMATION ONLY**

MODEL: E:\Bids\11-24-17\11-24-17.dwg  
FILE NAME: P:\Bids\11-24-17\11-24-17.dwg

USER NAME = daniel.woods	DESIGNED -	REVISED -
PLOT SCALE = 0.16666633 / in.	DRAWN -	REVISED -
PLOT DATE = 10/20/2023	CHECKED -	REVISED -
	DATE -	REVISED -

**STATE OF ILLINOIS  
DEPARTMENT OF TRANSPORTATION**

**LOCATION 1: BEARING DETAILS (SN: 099-0139)  
US 52 OVER I-55**

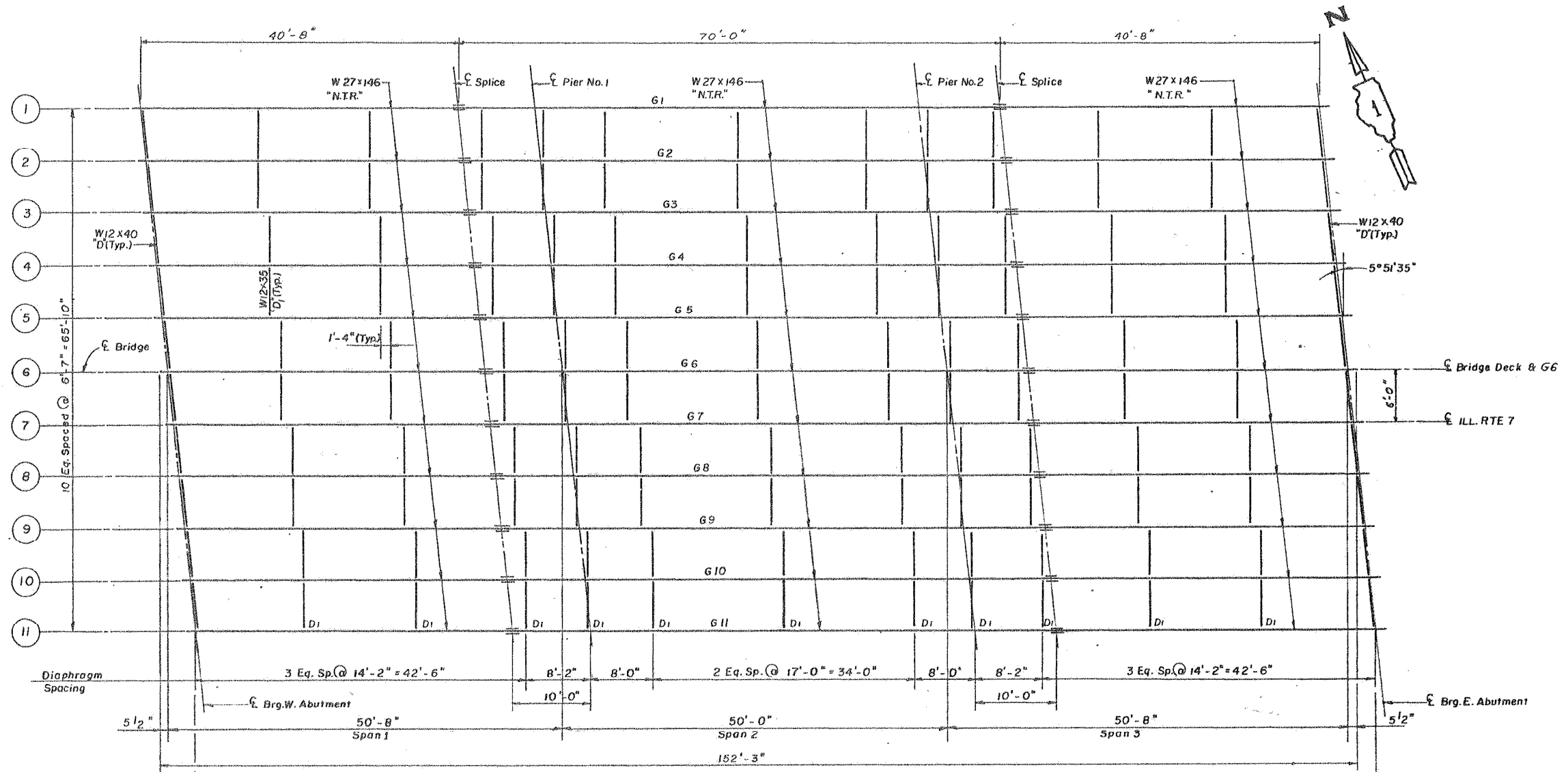
SCALE: Full Size 1 = 1 SHEET 4 OF 10 SHEETS STA. \_\_\_+\_\_\_ TO STA. \_\_\_+\_\_\_

F.A.P. RTE. 607/351	SECTION FAP 607/351 23 PB	COUNTY WILL	TOTAL SHEETS 17	SHEET NO. 7
CONTRACT NO. 62V27				
ILLINOIS FED. AID PROJECT				

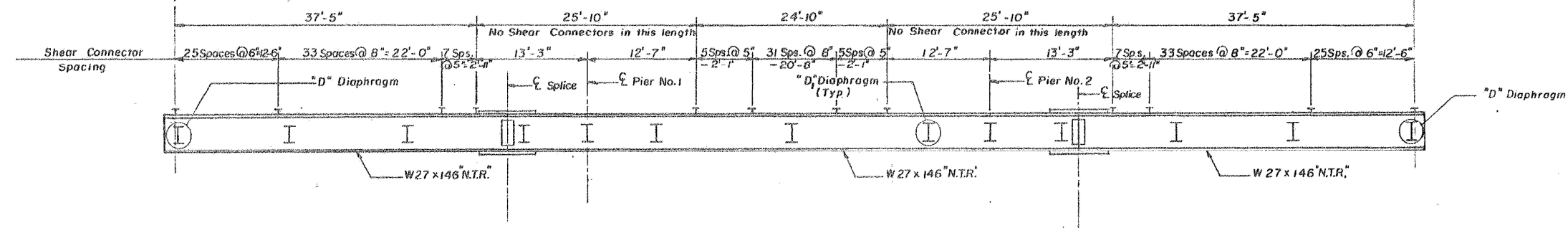








FRAMING PLAN



SECTIONAL ELEVATION

FOR INFORMATION ONLY

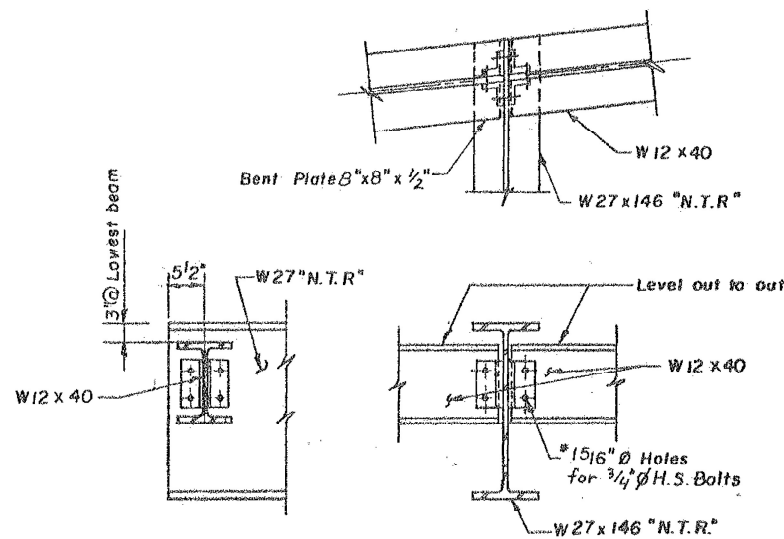
MODEL: E:\d\p\m\m\7 (Sheet) FILE NAME: P:\MIDOT\Documents\DOT Office\District 1\ORD Projects\106624\CADD\Drawings\106624-10.dwg

USER NAME = daniel.woods	DESIGNED -	REVISED -
	DRAWN -	REVISED -
PLOT SCALE = 0.16666633 / in.	CHECKED -	REVISED -
PLOT DATE = 10/20/2023	DATE -	REVISED -

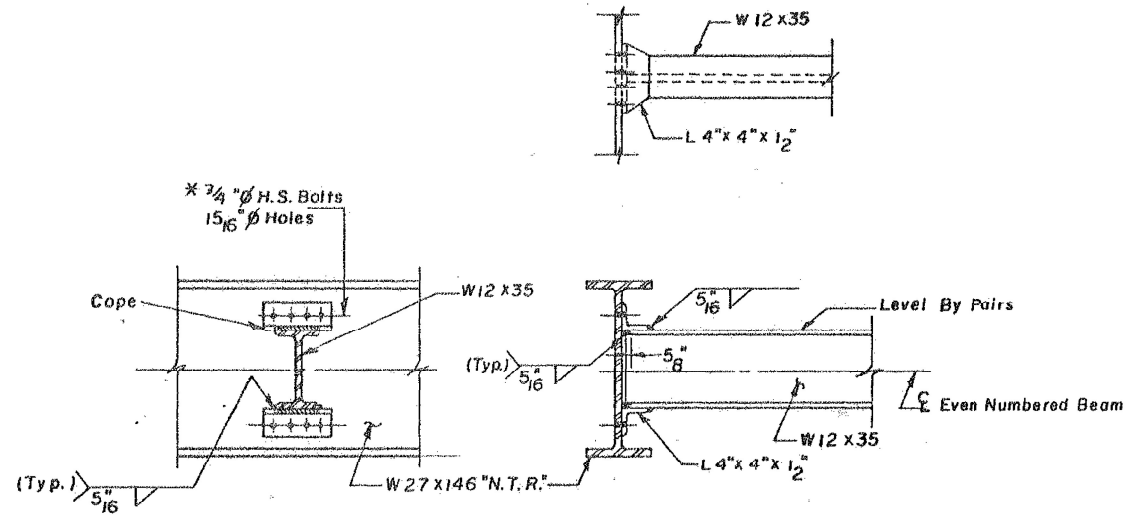
STATE OF ILLINOIS  
DEPARTMENT OF TRANSPORTATION

LOCATION 2: FRAMING PLAN & ELEVATION (SN: 099-0274)	
IL 7 OVER EJ&E RAILROAD	
SCALE: Full Size 1 = 1	SHEET 7 OF 10 SHEETS
STA. ___+___	TO STA. ___+___

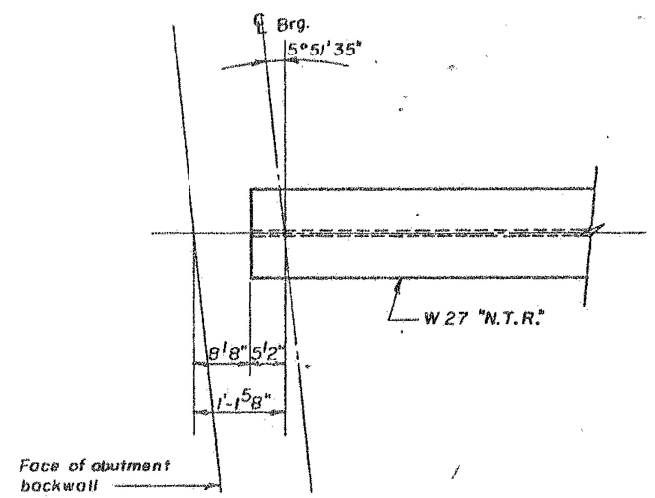
F.A.P. RTE. 607/351	SECTION FAP 607/351 23 PB	COUNTY WILL	TOTAL SHEETS 17	SHEET NO. 10
CONTRACT NO. 62V27				
ILLINOIS FED. AID PROJECT				



D-DIAPHRAGM DETAIL



D1-DIAPHRAGMS DETAIL



END OF BEAM DETAIL

"N.T.R." DESIGNATES NOTCH TOUGHNESS REQUIREMENT

FOR INFORMATION ONLY

MODEL: E:\d\p\m\m\4\Sheet1  
 FILE NAME: P:\MIDOT\Documents\DOT Office\District 1\ORD Project\10662\CADData\CADSheet10662.dwg

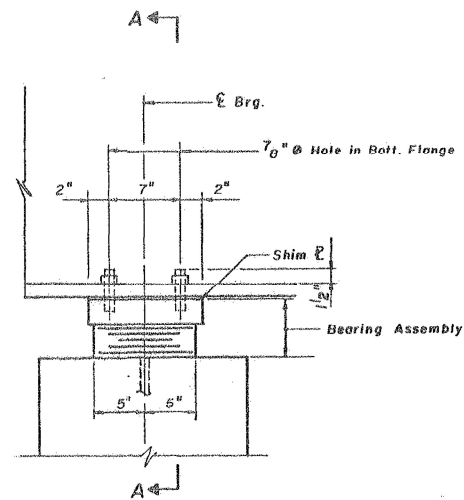
USER NAME = daniel.woods	DESIGNED -	REVISED -
	DRAWN -	REVISED -
PLOT SCALE = 0.16666633' / in.	CHECKED -	REVISED -
PLOT DATE = 10/20/2023	DATE -	REVISED -

STATE OF ILLINOIS  
DEPARTMENT OF TRANSPORTATION

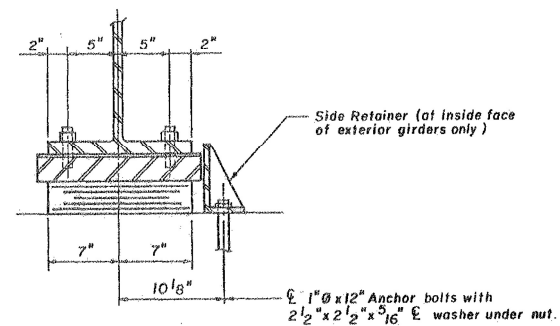
LOCATION 2: DIAPHRAGM DETAILS (SN: 099-0274)  
IL 7 OVER EJ&E RAILROAD

SCALE: Full Size 1 = 1 SHEET 8 OF 10 SHEETS STA. \_\_\_+\_\_\_ TO STA. \_\_\_+\_\_\_

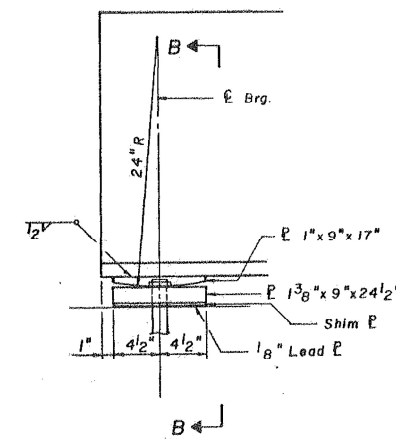
F.A.P. RTE. 607/351	SECTION FAP 607/351 23 PB	COUNTY WILL	TOTAL SHEETS 17	SHEET NO. 11
			CONTRACT NO. 62V27	
ILLINOIS FED. AID PROJECT				



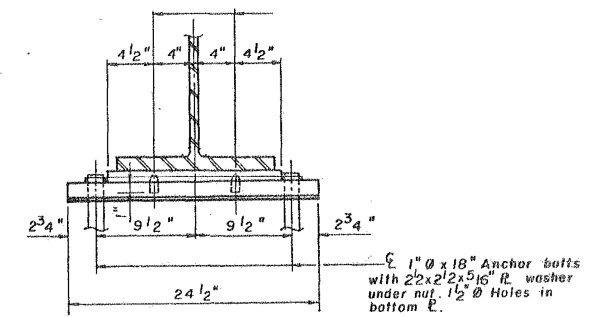
ELEVATION AT PIERS



SECTION A-A



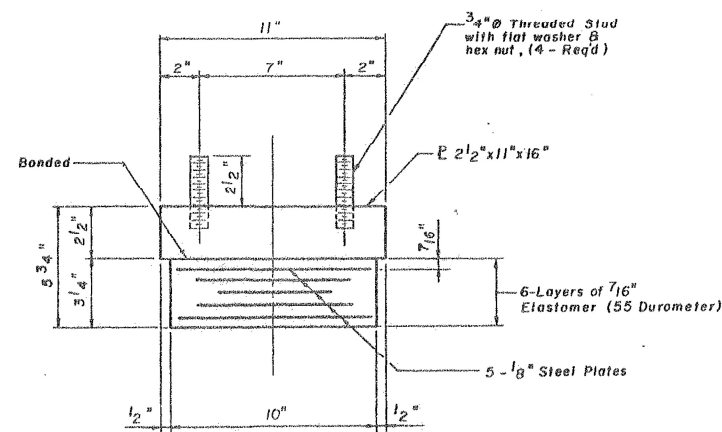
ELEVATION AT E. ABUTMENT



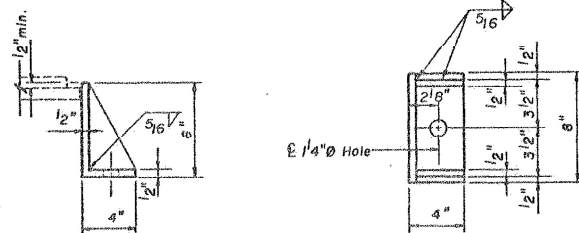
SECTION B-B

TYPE I ELASTOMERIC EXP. BRG.

FIXED BEARING



BEARING ASSEMBLY



SIDE RETAINER

FOR INFORMATION ONLY

MODEL: E:\d\p\m\m\4\Sheet1  
FILE NAME: P:\DOT\Documents\DOT Office\District 1\ORD Project\106624\CADD\Drawings\CD\Sheet1.dwg 10/20/2023 10:56:24 AM

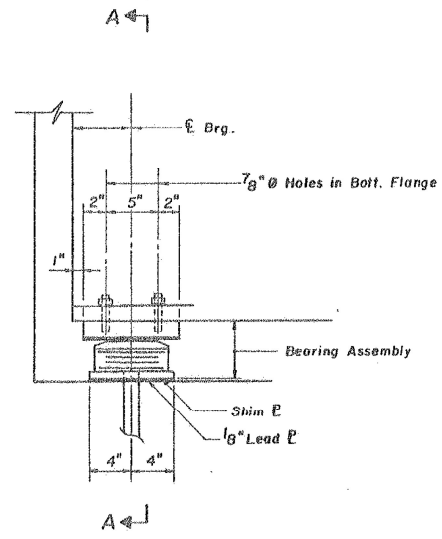
USER NAME = daniel.woods	DESIGNED -	REVISED -
	DRAWN -	REVISED -
PLOT SCALE = 0.16666633 / in.	CHECKED -	REVISED -
PLOT DATE = 10/20/2023	DATE -	REVISED -

STATE OF ILLINOIS  
DEPARTMENT OF TRANSPORTATION

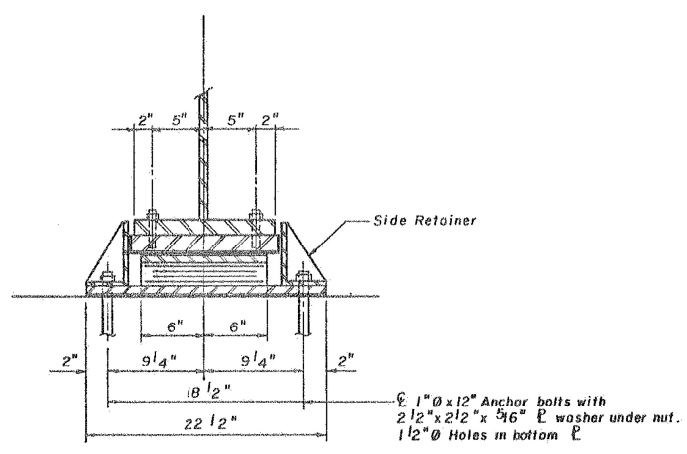
LOCATION 2: BEARING DETAILS (SN: 099-0274)  
IL 7 OVER EJ&E RAILROAD

SCALE: Full Size 1 = 1 SHEET 9 OF 10 SHEETS STA. \_\_\_+\_\_\_ TO STA. \_\_\_+\_\_\_

F.A.P. RTE. 607/351	SECTION FAP 607/351 23 PB	COUNTY WILL	TOTAL SHEETS 17	SHEET NO. 12
			CONTRACT NO. 62V27	
ILLINOIS FED. AID PROJECT				

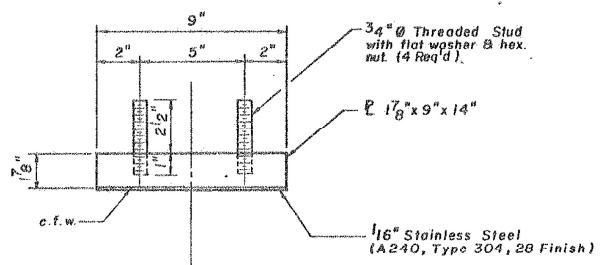


ELEVATION AT W. ABUTMENT

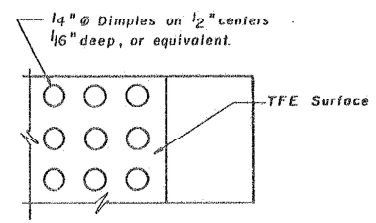


SECTION A-A

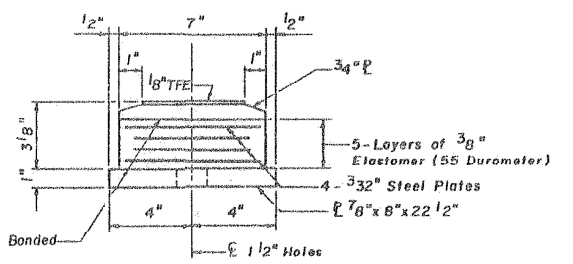
TYPE II TFE ELASTOMERIC EXP. BRG.



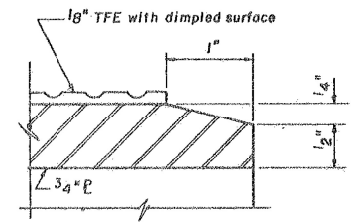
TOP BEARING ASSEMBLY



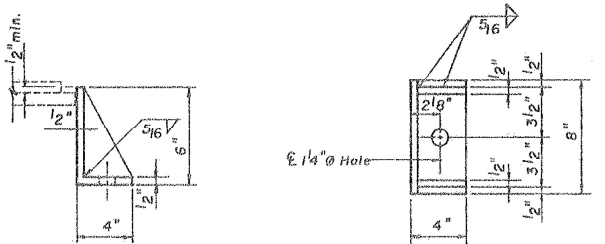
PLAN - TFE SURFACE



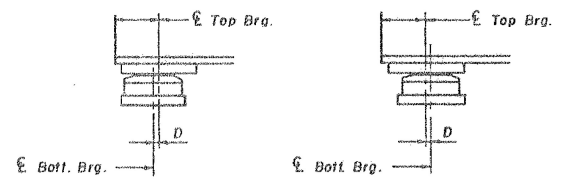
BOTTOM BEARING ASSEMBLY



SECTION THRU TFE



SIDE RETAINER



SETTING ANCHOR BOLTS AT EXP. BRG.

FOR INFORMATION ONLY

MODEL: E:\d\p\m\10 [Sheet]  
 FILE NAME: P:\Projects\6227\Documents\DOT Office\District 1\ORR Project\106624\CADD\Bridg\CD\Bridg\106624-10-Bridg.dgn

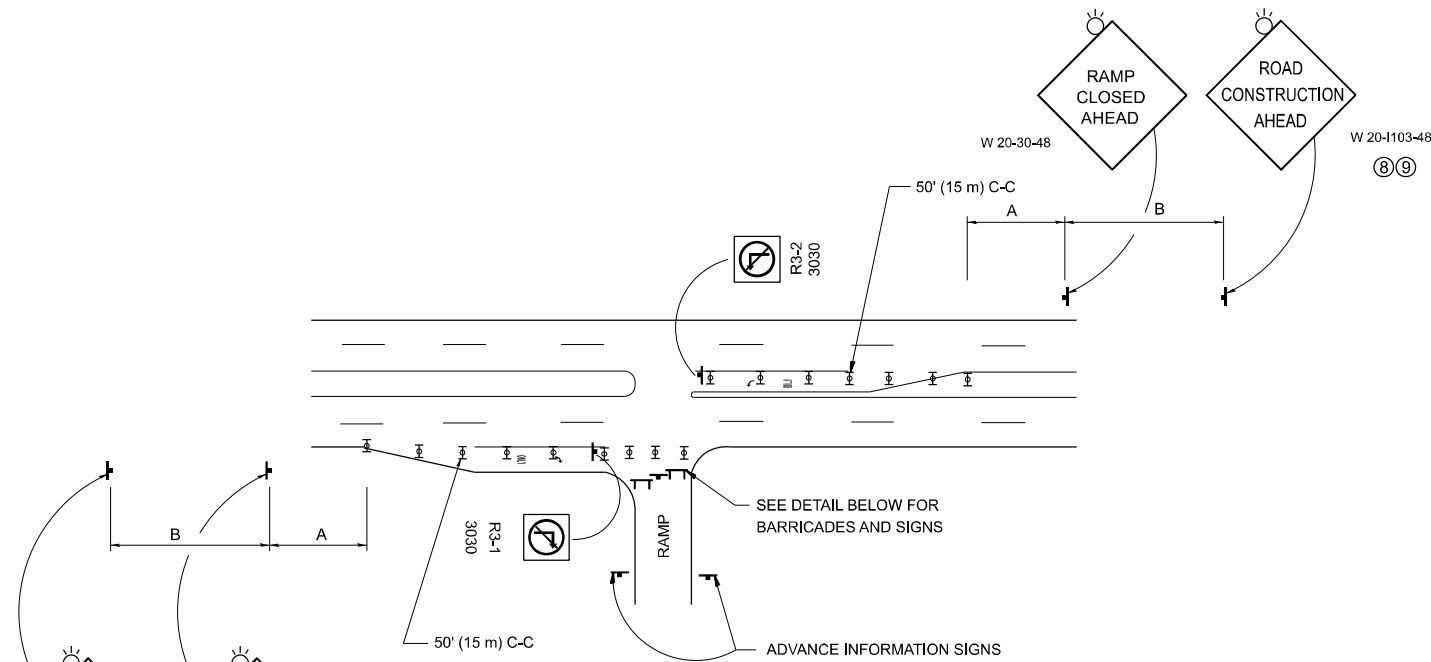
USER NAME = daniel.woods	DESIGNED -	REVISED -
DRAWN -	REVISOR -	
PLOT SCALE = 0.16666633 / in.	CHECKED -	REVISED -
PLOT DATE = 10/20/2023	DATE -	REVISED -

STATE OF ILLINOIS  
DEPARTMENT OF TRANSPORTATION

LOCATION 2: BEARING DETAILS (SN: 099-0274)  
IL 7 OVER EJ&E RAILROAD

SCALE: Full Size 1 = 1 SHEET 10 OF 10 SHEETS STA. \_\_\_+\_\_\_ TO STA. \_\_\_+\_\_\_

F.A.P. RTE. 607/351	SECTION FAP 607/351 23 PB	COUNTY WILL	TOTAL SHEETS 17	SHEET NO. 13
CONTRACT NO. 62V27				
ILLINOIS FED. AID PROJECT				

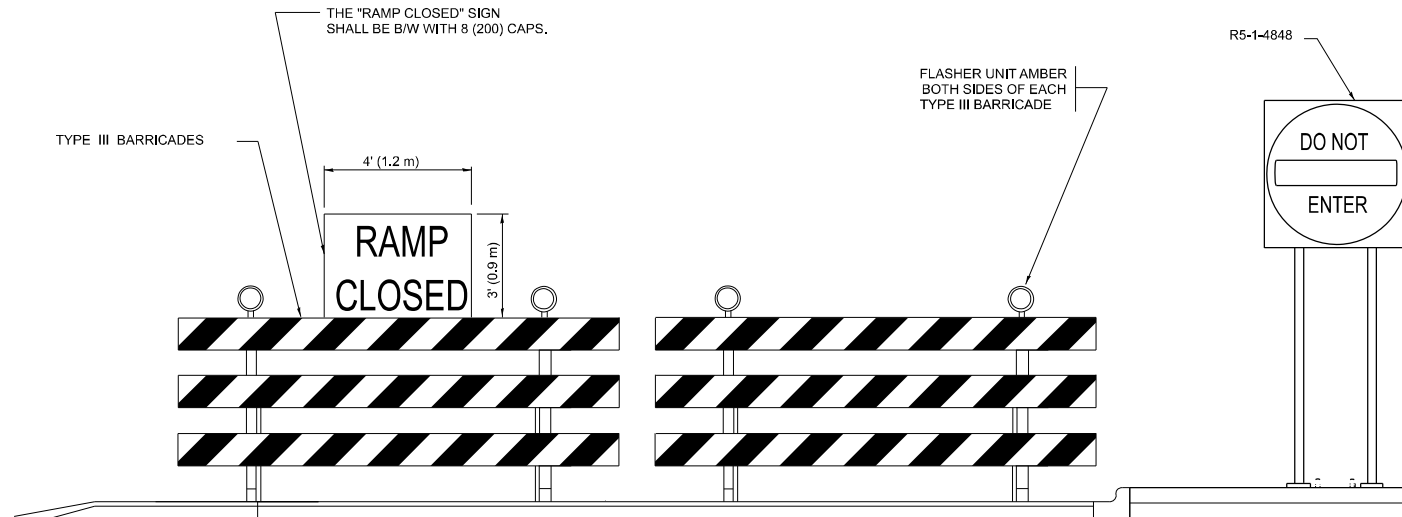
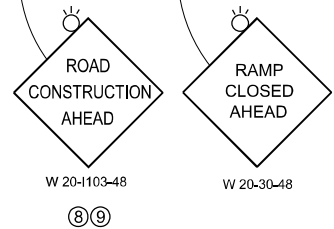


**ENTRANCE RAMP CLOSURE**

SIGN SPACING TABLE

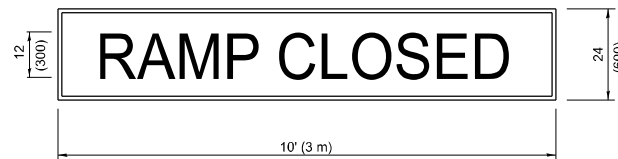
FACILITY	DISTANCE BETWEEN SIGNS	
	A	B
EXPRESSWAY >24 HOURS	1000' (300 m)	1500' (450 m)
EXPRESSWAY ≤24 HOURS	500' (150 m)	500' (150 m)
ARTERIAL 55 MPH	500' (150 m)	500' (150 m)
ARTERIAL 50-45 MPH	350' (100 m)	350' (100 m)
ARTERIAL <45 MPH	200' (60 m)	200' (60 m)

DISTANCES MAY BE SHORTENED DEPENDING UPON THE PROXIMITY OF ADJACENT RAMPS OR INTERSECTIONS.



**DETAIL FOR REQUIRED BARRICADES & SIGNS**

**RAMP CLOSURE ADVANCE WARNING SIGN**



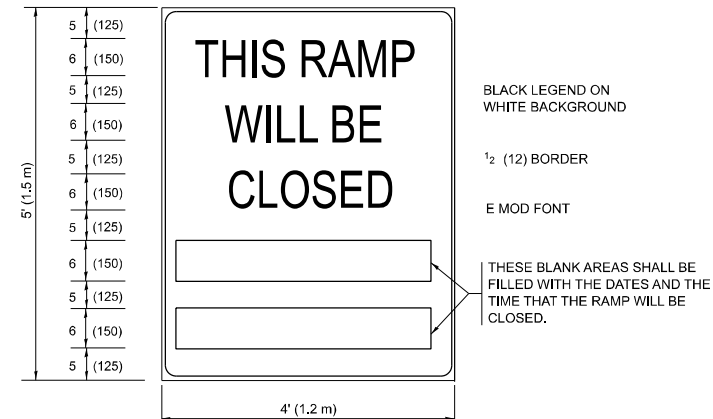
BLACK LEGEND ON ORANGE BACKGROUND MOUNTED DIAGONALLY  
E MOD FONT  
1 (25) BORDER

THESE SIGNS ARE REQUIRED ON ALL THE EXIT GUIDE SIGNS FOR EXIT RAMPS THAT WILL BE CLOSED FOR MORE THAN FOUR (4) CONSECUTIVE DAYS.

THESE SIGNS ARE REQUIRED ON BOTH SIDES OF THE RAMP, MINIMUM OF 1 WEEK IN ADVANCE OF THE CLOSURE.

THESE SIGNS SHALL BE FABRICATED AND PAID FOR ACCORDING TO THE TEMPORARY INFORMATION SIGNING SPECIAL PROVISION

**RAMP CLOSURE ADVANCE INFORMATION SIGN**

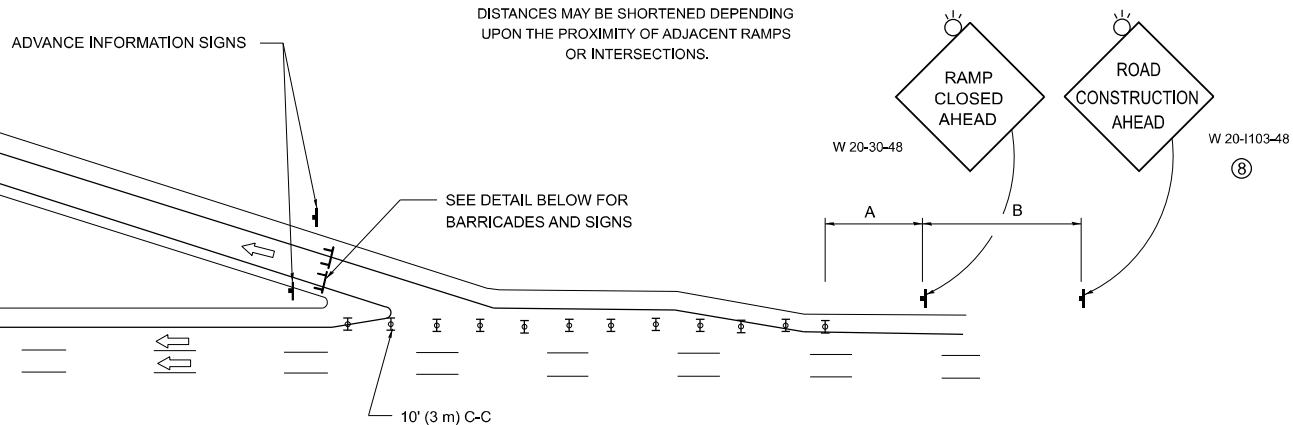


BLACK LEGEND ON WHITE BACKGROUND

1/2 (12) BORDER

E MOD FONT

THESE BLANK AREAS SHALL BE FILLED WITH THE DATES AND THE TIME THAT THE RAMP WILL BE CLOSED.



**EXIT RAMP CLOSURE**

**SYMBOLS**

- ▬ TYPE II BARRICADE OR DRUM
- ▬ TYPE III BARRICADE WITH 2 FLASHING LIGHTS

**GENERAL NOTES:**

- 1 CONES MAY BE SUBSTITUTED FOR DRUMS OR TYPE II BARRICADES DURING DAY OPERATIONS. CONES SHALL BE A MINIMUM OF 28 (700) HIGH.
- 2 VERTICAL BARRICADES SHALL NOT BE USED FOR RAMP CLOSURES.
- 3 A FLAGGER SHALL BE POSITIONED AT EACH CLOSED RAMP THAT IS OPEN TO CONSTRUCTION VEHICLES, PRECEDED BY A W20-7 FLAGGER WARNING SIGN.
- 4 ALL ROUTE MARKERS AND TRAILBLAZER ASSEMBLIES WHICH DIRECT MOTORISTS TO A CLOSED ENTRANCE RAMP SHALL BE COVERED WHEN THE RAMP IS CLOSED FOR MORE THAN FOUR (4) DAYS.
- 5 THE SIGNING AND BARRICADING WHICH IS REQUIRED BY THIS DETAIL SHALL BE INCLUDED IN THE COST OF TRAFFIC CONTROL AND PROTECTION (EXPRESSWAYS).
- 6 AUTHORIZATION FROM THE DISTRICT'S BUREAU OF TRAFFIC IS REQUIRED FOR ALL RAMP CLOSURES.
- 7 THE RAMP CLOSURE ADVANCE INFORMATION SIGNS SHALL BE ERECTED IF THE CLOSURE TIME EXCEEDS TWENTY-FOUR (24) HOURS. ADDITIONAL ADVANCE WARNING SIGNS ON EXIT GUIDE SIGNING WILL BE REQUIRED FOR EXIT RAMP CLOSURES THAT EXCEED FOUR (4) DAYS IN LENGTH
- 8 ROAD CONSTRUCTION AHEAD SIGNS MAY BE OMITTED WHEN THIS DETAIL IS USED IN CONJUNCTION WITH OTHER TRAFFIC CONTROL THAT ALREADY INCLUDES A ROAD CONSTRUCTION AHEAD SIGN.
- 9 ARTERIAL ROAD CONSTRUCTION AHEAD SIGNS SHALL BE INSTALLED ON THE LEFT SIDE OF TRAFFIC IF THE MEDIAN IS MORE THAN 10 FT WIDE.

ALL DIMENSIONS ARE IN INCHES (MILLIMETERS) UNLESS OTHERWISE SHOWN.

MODEL: TC-08 (Sheet) FILE NAME: P:\BIDD\Documents\DOT Office\District 1\ORIG Projects\CD\Bids\CDAddData\CDAddData\106624-1\Sheet1.dgn

USER NAME = daniel.woods	DESIGNED - D.W.S.	REVISED - S.P.B._01-07
PLOT SCALE = 0.16666633 / in.	DRAWN -	REVISED - S.P.B._12-09
PLOT DATE = 10/20/2023	CHECKED -	REVISED - M.D._06-13
	DATE - 02-83	REVISED - M.D._01-18

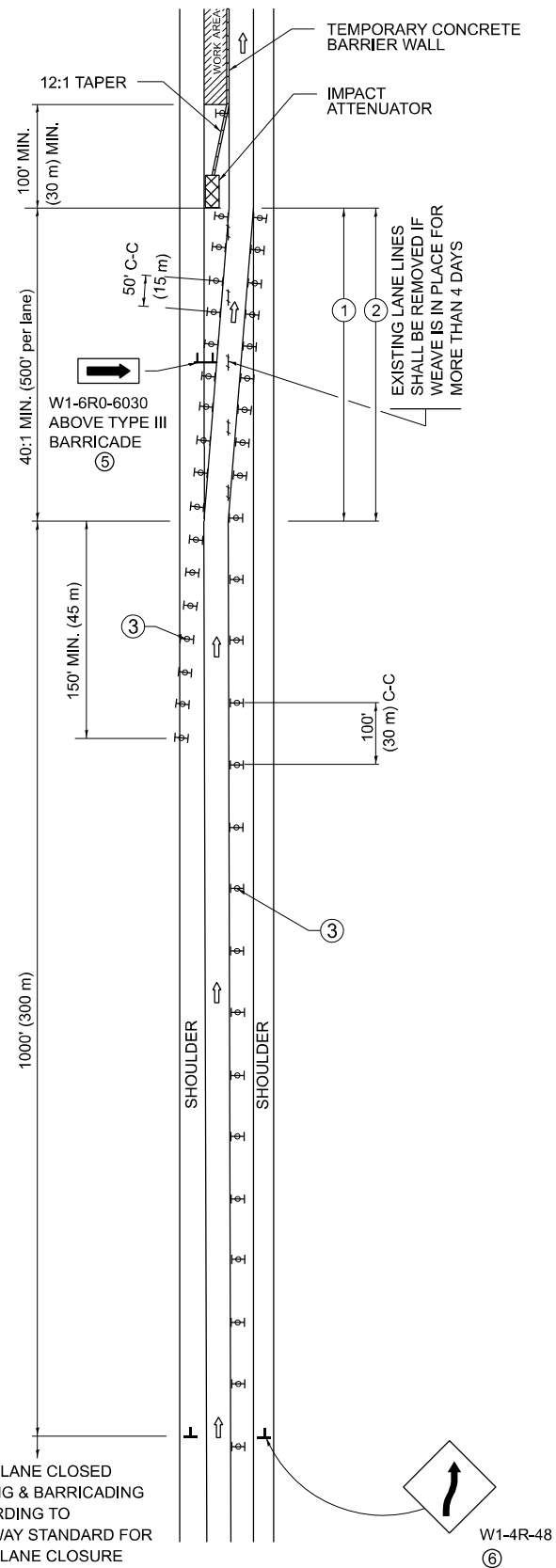
**STATE OF ILLINOIS  
DEPARTMENT OF TRANSPORTATION**

**ENTRANCE AND EXIT RAMP  
CLOSURE DETAILS**

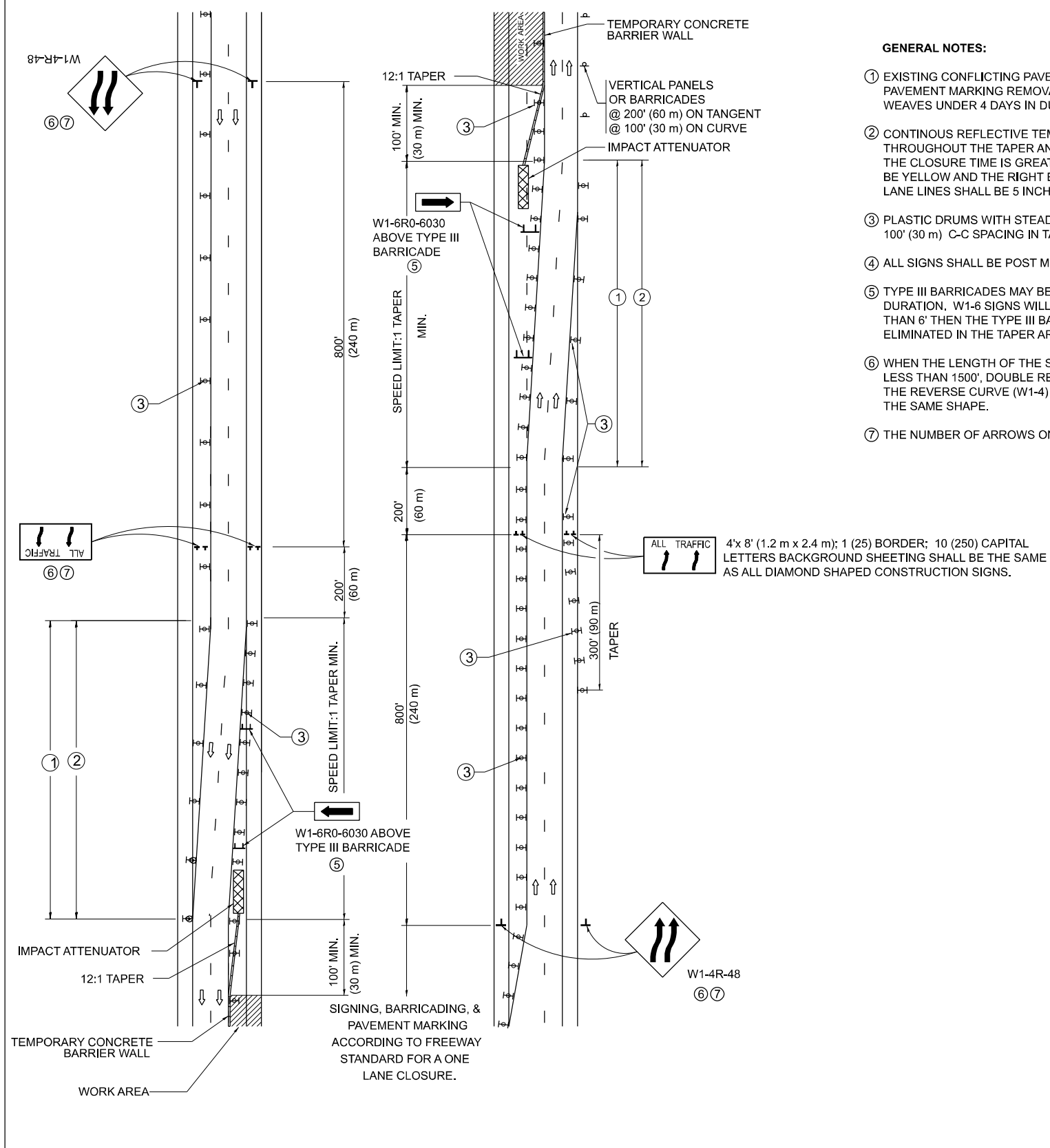
SCALE: NONE SHEET 1 OF 1 SHEETS STA. \_\_\_\_+\_\_ TO STA. \_\_\_\_+\_\_

F.A.P. RTE.	SECTION	COUNTY	TOTAL SHEETS	SHEET NO.
607/351	FAP 607/351 23 PB	WILL	17	14
<b>TC-08</b>			CONTRACT NO. 62V27	
ILLINOIS FED. AID PROJECT				

# SINGLE LANE WEAVE



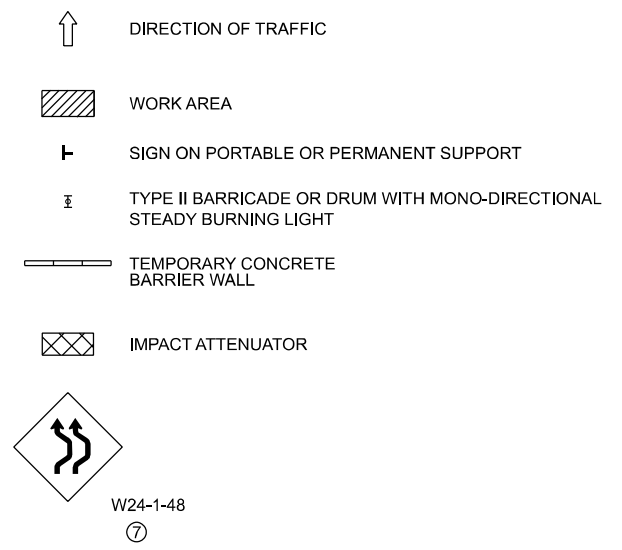
# MULTI-LANE WEAVE



### GENERAL NOTES:

- ① EXISTING CONFLICTING PAVEMENT MARKING LINES SHALL BE REMOVED. PAVEMENT MARKING REMOVAL SHALL NOT BE REQUIRED FOR SINGLE LANE WEAVES UNDER 4 DAYS IN DURATION.
- ② CONTINUOUS REFLECTIVE TEMPORARY PAVEMENT MARKING TAPE SHALL BE PLACED THROUGHOUT THE TAPER AND FOR 300' (90 m) ALONG SIDE THE WORK AREA WHERE THE CLOSURE TIME IS GREATER THAN FOURTEEN DAYS. THE LEFT EDGE LINE SHALL BE YELLOW AND THE RIGHT EDGE LINE SHALL BE WHITE. FOR MULTI-LANE WEAVES LANE LINES SHALL BE 5 INCH, 10'-30' (3 m-9 m) SKIP DASH, WHITE.
- ③ PLASTIC DRUMS WITH STEADY BURN LIGHTS AT 50' (15 m) C-C SPACING IN TAPERS AND 100' (30 m) C-C SPACING IN TANGENTS.
- ④ ALL SIGNS SHALL BE POST MOUNTED IF THE CLOSURE TIME EXCEEDS FOUR DAYS.
- ⑤ TYPE III BARRICADES MAY BE OMITTED FOR SINGLE-LANE WEAVES UNDER 24-HOURS IN DURATION. W1-6 SIGNS WILL STILL BE REQUIRED. IF THE WIDTH OF OFFSET IS LESS THAN 6' THEN THE TYPE III BARRICADE WITH ATTACHED ARROW SIGN PANEL CAN BE ELIMINATED IN THE TAPER AREAS.
- ⑥ WHEN THE LENGTH OF THE SHIFTED SEGMENT (DISTANCE BETWEEN WEAVE POINTS) IS LESS THAN 1500', DOUBLE REVERSE CURVE SIGNS (W24-1) SHOULD BE USED INSTEAD OF THE REVERSE CURVE (W1-4) SIGNS. ARROWS ON THE 4'X8' "ALL TRAFFIC" SIGNS SHALL BE THE SAME SHAPE.
- ⑦ THE NUMBER OF ARROWS ON THESE SIGNS SHALL MATCH THE NUMBER OF LANES OPEN TO TRAFFIC.

### SYMBOLS



ALL DIMENSIONS ARE IN INCHES (MILLIMETERS) UNLESS OTHERWISE SHOWN

MODEL: TC-09 (Sheet) FILE NAME: P:\Bids\TC-09\Documents\DOT Office\District 1\ORD Project\106624\CADDData\CAD\Sheet\106624-11-18-24.dgn

USER NAME = daniel.woods	DESIGNED - D.W.S.	REVISED - J.A.F. 02-06
PLOT SCALE = 0.16666633' / in.	CHECKED -	REVISED - S.P.B. 01-07
PLOT DATE = 10/20/2023	DATE - 02-27	REVISED - S.P.B. 12-09
		REVISED - M.D. 06-13

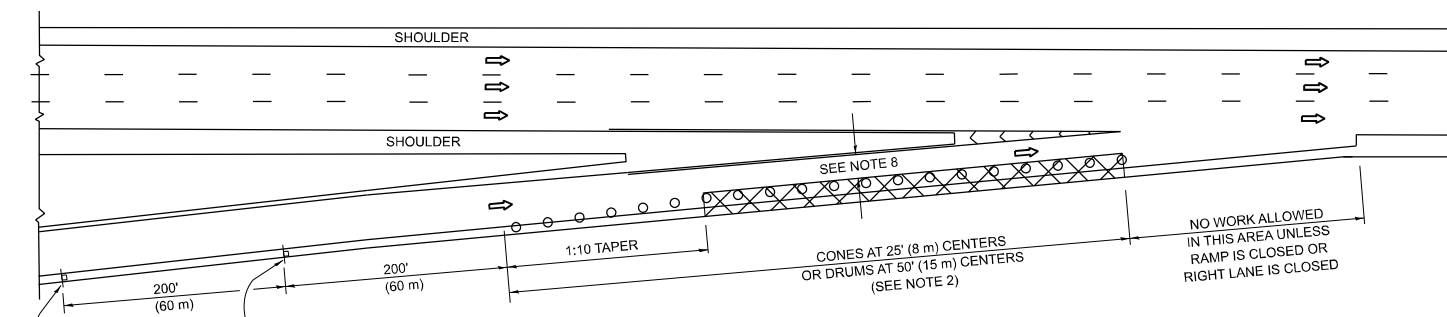
## STATE OF ILLINOIS DEPARTMENT OF TRANSPORTATION

## TRAFFIC CONTROL DETAILS FOR FREEWAY SINGLE & MULTI-LANE WEAVE

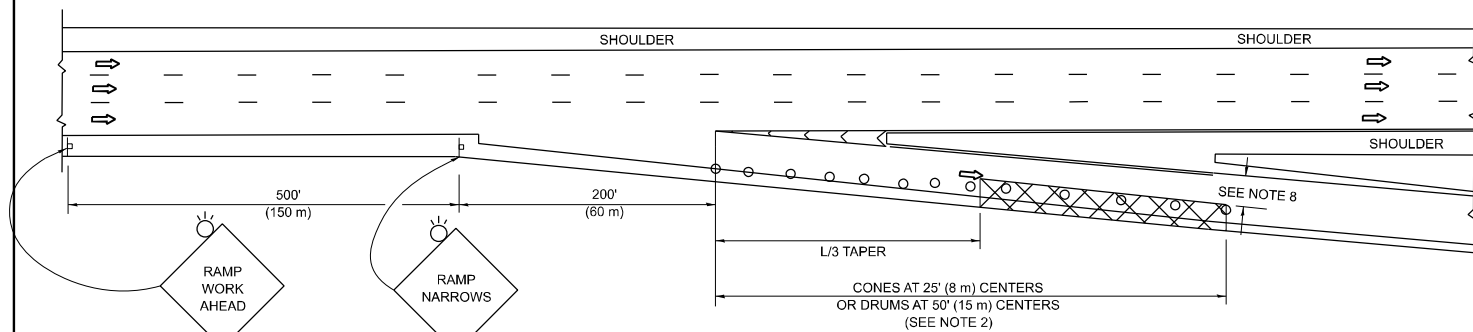
SCALE: NONE SHEET 1 OF 1 SHEETS STA. \_\_\_+\_\_\_ TO STA. \_\_\_+\_\_\_

F.A.P. RTE.	SECTION	COUNTY	TOTAL SHEETS	SHEET NO.
607/351	FAP 607/351 23 PB	WILL	18	15
TC-09		CONTRACT NO. 62V27		
ILLINOIS FED. AID PROJECT				

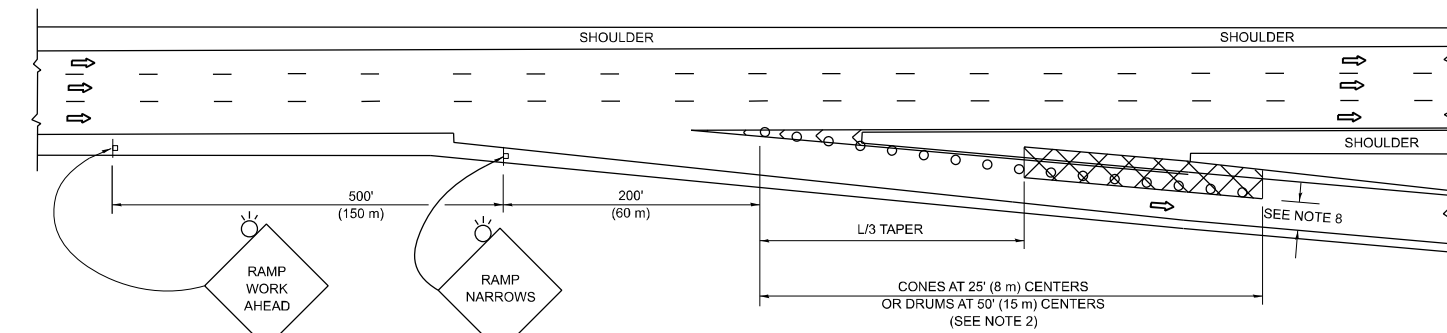
**PARTIAL RAMP CLOSURE DETAILS**



**TYPICAL ENTRANCE RAMP**



**TYPICAL EXIT RAMP**



**TYPICAL EXIT RAMP**

**SYMBOLS**

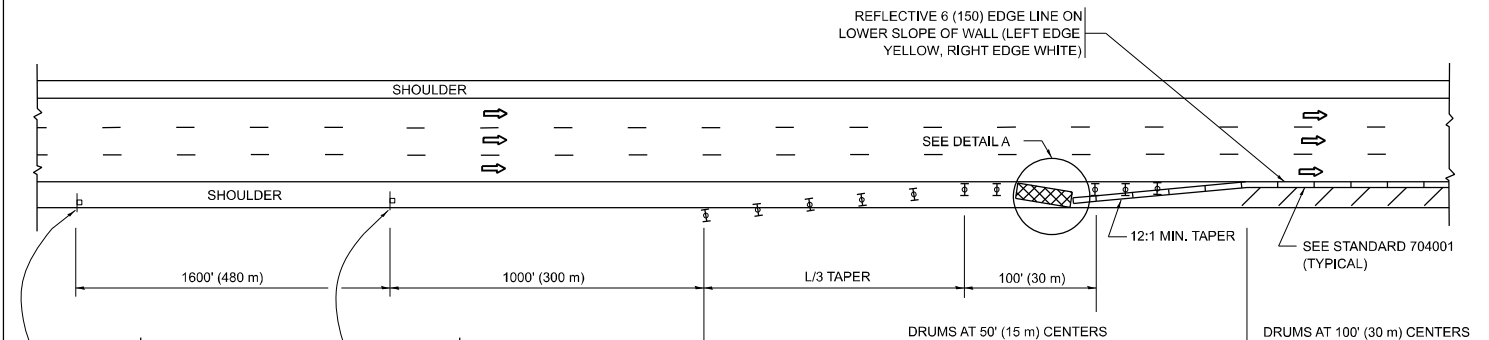
- ACTIVE WORK AREA
- SIGN ON PORTABLE OR PERMANENT SUPPORT
- FLAGGER WITH CONTROL SIGN
- TYPE II BARRICADE OR DRUM
- CONE, DRUM OR BARRICADE
- IMPACT ATTENUATOR OF TYPE AND TEST LEVEL SPECIFIED

**GENERAL NOTES:**

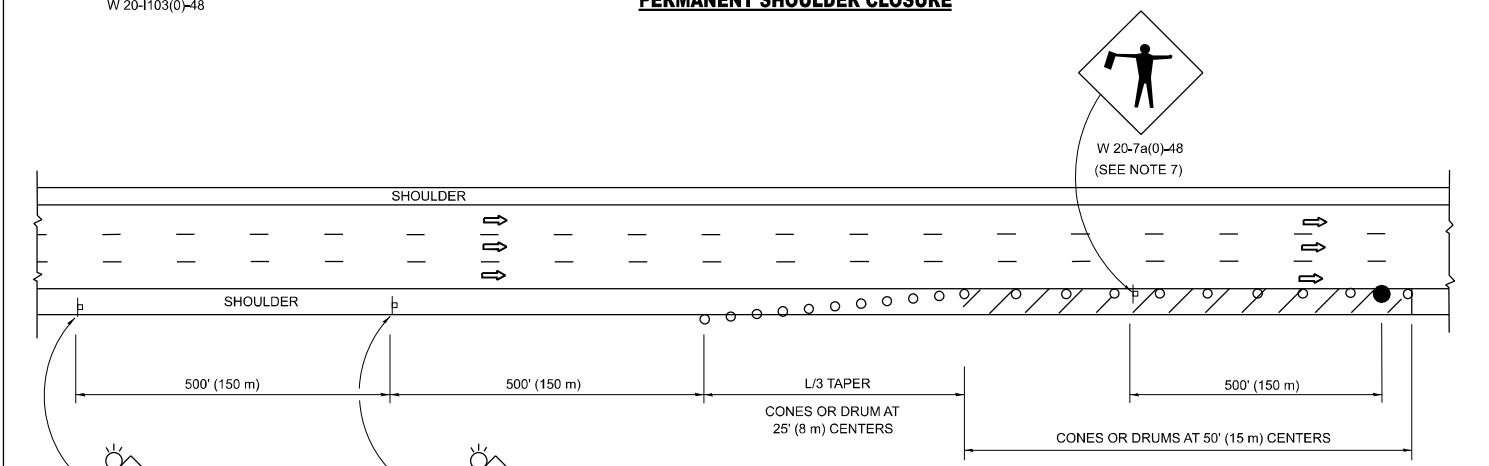
1. THE "L" DISTANCE EQUALS:
 

SPEED LIMIT	FORMULAS
45 mph (80 km/h)	METRIC ENGLISH
OR GREATER:	L=0.65(W)(S) L=(W)(S)
W = WIDTH OF OFFSET IN FEET (METERS)	
S = NORMAL POSTED SPEED MPH (KM/H)	
2. TYPE II BARRICADES OR DRUMS ARE REQUIRED FOR ALL NIGHTTIME CLOSURES. TYPE II BARRICADES OR DRUMS WITH MONODIRECTIONAL STEADY BURN LIGHTS ARE REQUIRED FOR DELINEATING OBSTACLES, EXCAVATIONS, OR HAZARDS EXCEEDING 100 FT (30m) IN LENGTH AT NIGHT.
3. ALL SIGNS SHALL BE POST MOUNTED IF THE CLOSURE TIME EXCEEDS FOUR DAYS.
4. FLASHING LIGHTS SHALL BE USED DURING THE HOURS OF DARKNESS AND SHALL BE INSTALLED ABOVE THE FIRST TWO SETS OF SIGNS.

**SHOULDER CLOSURE DETAILS**

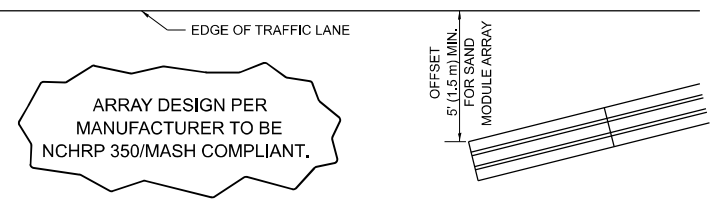


**PERMANENT SHOULDER CLOSURE**



**TEMPORARY SHOULDER CLOSURE**

- THIS DETAIL IS USED WHERE:
1. VEHICLES, EQUIPMENT, WORKERS OR THEIR ACTIVITIES ENCR OACH IN AN AREA CLOSER THAN 15' (4.5 m) TO THE EDGE OF PAVEMENT FOR A PERIOD IN EXCESS OF 15 MINUTES.



**DETAIL "A"  
IMPACT ATTENUATOR, TEMPORARY  
(SEE NOTE 5)**

5. THE IMPACT ATTENUATOR, TEMPORARY IS NOT REQUIRED WHEN THE TEMPORARY CONCRETE BARRIER WALL IS PROTECTED BY OR IS TIED INTO THE EXISTING GUARDRAIL. IF OFFSET IS LESS THAN 5 FEET USE NARROW USE TYPE DEVICE TO MEET NCHRP350/MASH.
6. AUTHORIZATION FROM THE DISTRICT'S BUREAU OF TRAFFIC IS REQUIRED FOR ALL FREEWAY CLOSURES.
7. THE FLAGGER AND FLAGGER SIGN ARE REQUIRED AT THE ABOVE WORK SITES WHEN:
  - a. FOUR OR MORE WORK VEHICLES ENTER THE TRAFFIC LANES IN A ONE HOUR PERIOD.
  - b. THE WORK ACTIVITY REQUIRES FREQUENT ENCR OACHMENT INTO THE LANE OPEN TO TRAFFIC.
 THE FLAGGER SHALL BE STATIONED APPROXIMATELY 100' (30 m) TO 200' (60 m) IN ADVANCE OF THE WORKERS.

8. 12' MIN. WIDTH TANGENT SECTION  
16' MIN. WIDTH CURVE SECTION.

9. TEMPORARY SHOULDER AND NON-SYSTEM INTERCHANGE PARTIAL RAMP CLOSURES ARE ALLOWED WEEKDAYS BETWEEN 9:00 A.M. AND 3:00 P.M. AND BETWEEN 7:00 P.M. AND 5:00 A.M. OR AS APPROVED BY THE EXPRESSWAY TRAFFIC OPERATIONS ENGINEER. PERMANENT SHOULDER AND PARTIAL RAMP CLOSURES WILL ONLY BE PERMITTED IF CALLED FOR IN THE PLANS OR AS APPROVED BY THE EXPRESSWAY OPERATIONS ENGINEER.

ALL DIMENSIONS ARE IN INCHES (MILLIMETERS) UNLESS OTHERWISE SHOWN.

MODEL: TC-17 (Rev. 04/14) FILE NAME: p:\bchrcp\work\p\DOT\Documents\DOT Office\District 1\ORD Project\010662\CADData\CAD\Sheet\010662-48-18-18.dwg

USER NAME = daniel.woods	DESIGNED -	REVISED - S.P.B. 12-09
	DRAWN - D.W.S.	REVISED - M.D. 06-13
PLOT SCALE = 0.16666633' / in.	CHECKED -	REVISED - M.D. 01-18
PLOT DATE = 10/20/2023	DATE - 11-96	REVISED - M.D. 10-20

**STATE OF ILLINOIS  
DEPARTMENT OF TRANSPORTATION**

**TRAFFIC CONTROL DETAILS FOR FREEWAY  
SHOULDER CLOSURES AND PARTIAL RAMP CLOSURES**

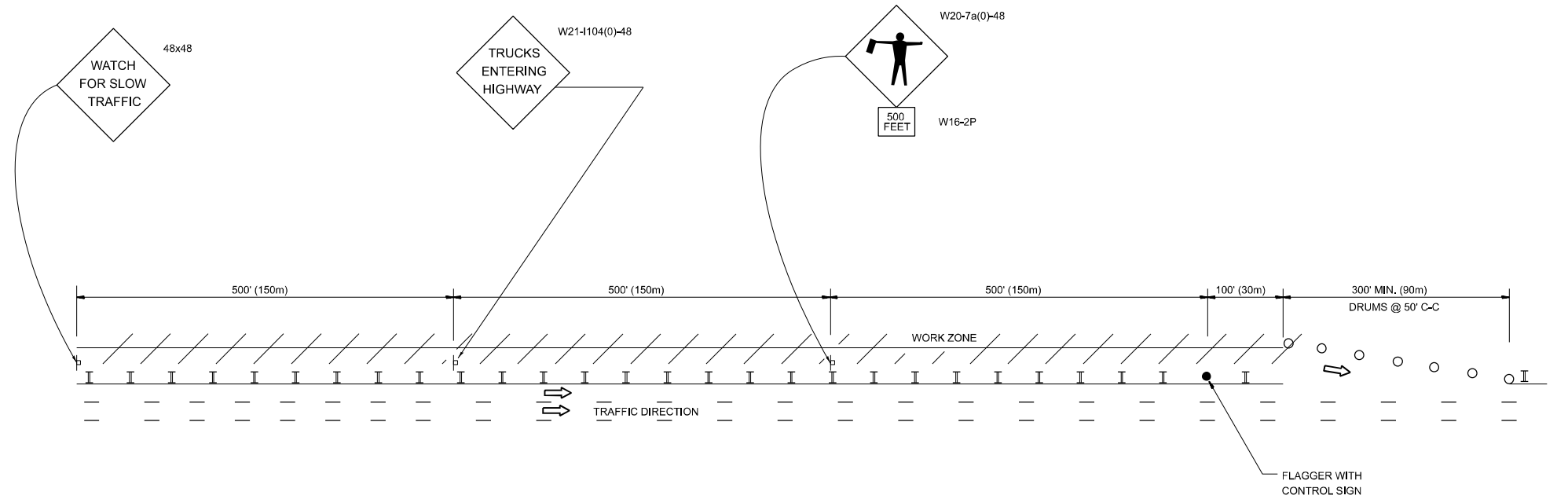
SCALE: NONE SHEET 1 OF 1 SHEETS STA. \_\_\_+\_\_\_ TO STA. \_\_\_+\_\_\_

F.A.P. RTE. 607/351	SECTION FAP 607/351 23 PB	COUNTY WILL	TOTAL SHEETS 17	SHEET NO. 16
<b>TC-17</b>		CONTRACT NO. 62V27		
ILLINOIS FED. AID PROJECT				

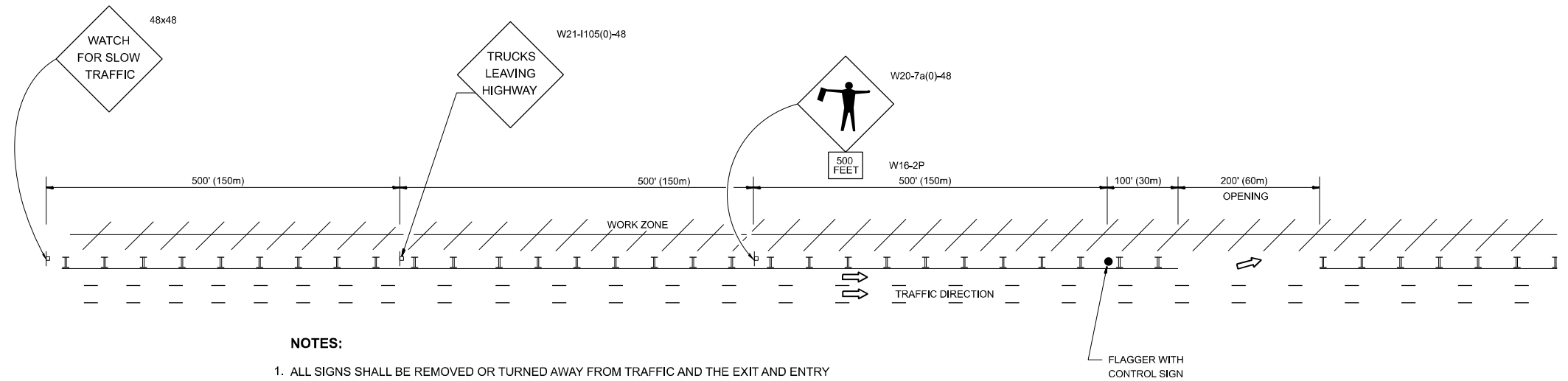


SIGNING FOR FLAGGING OPERATIONS AT WORK ZONE OPENINGS

**WORK ZONE EXIT OPENING**



**WORK ZONE ENTRY OPENING**



**NOTES:**

1. ALL SIGNS SHALL BE REMOVED OR TURNED AWAY FROM TRAFFIC AND THE EXIT AND ENTRY OPENINGS SHALL BE CLOSED WHEN THE FLAGGING OPERATION CEASES. NON OPERATING EQUIPMENT SHALL COMPLY WITH ARTICLE 701.11
2. WORK ZONE OPENINGS SHALL BE A MINIMUM OF ONE HALF MILE APART AND A MINIMUM OF ONE QUARTER MILE FROM ALL ENTRANCE AND EXIT RAMPS.
3. EXITING THE WORK ZONE AT ANY PLACE OTHER THAN AT A WORK ZONE EXIT OPENING WILL BE PROHIBITED.
4. ALL VEHICLES SHALL ENTER THE WORK ZONE AT ENTRY OPENINGS, USING THEIR TURN SIGNALS TO WARN MOTORISTS
5. FLAGGERS SHALL NOT STOP TRAFFIC OR DIRECT TRAFFIC INTO AN ADJACENT LANE.

ALL DIMENSIONS ARE IN INCHES (MILLIMETERS) UNLESS OTHERWISE SHOWN

MODEL: TC-18 (Sheet)  
FILE NAME: c:\p\work\pww\tdaniel.woods@illinois.gov\09022\2\106624-shl-DistStd.dgn

USER NAME = daniel.woods	DESIGNED -
DRAWN -	REVISOR -
PLOT SCALE = 0.16666833" / in.	CHECKED -
PLOT DATE = 10/20/2023	DATE -

REVISED - J.A.F. 02-06
REVISED - S.P.B. 01-07
REVISED - S.P.B. 12-09
REVISED - M.D.06-13

**STATE OF ILLINOIS  
DEPARTMENT OF TRANSPORTATION**

**FREEWAY / EXPRESSWAY SIGNING FOR FLAGGING OPERATIONS  
AT WORK ZONE OPENINGS ON FREEWAYS / EXPRESSWAYS**

SCALE: NONE    SHEET 1 OF 1 SHEETS    STA.    TO STA.

F.A.P. RTE.	SECTION	COUNTY	TOTAL SHEETS	SHEET NO.
607/351	FAP 607/351 23 PB	WILL	17	17
<b>TC-18</b>			CONTRACT NO. 62V27	
ILLINOIS FED. AID PROJECT				