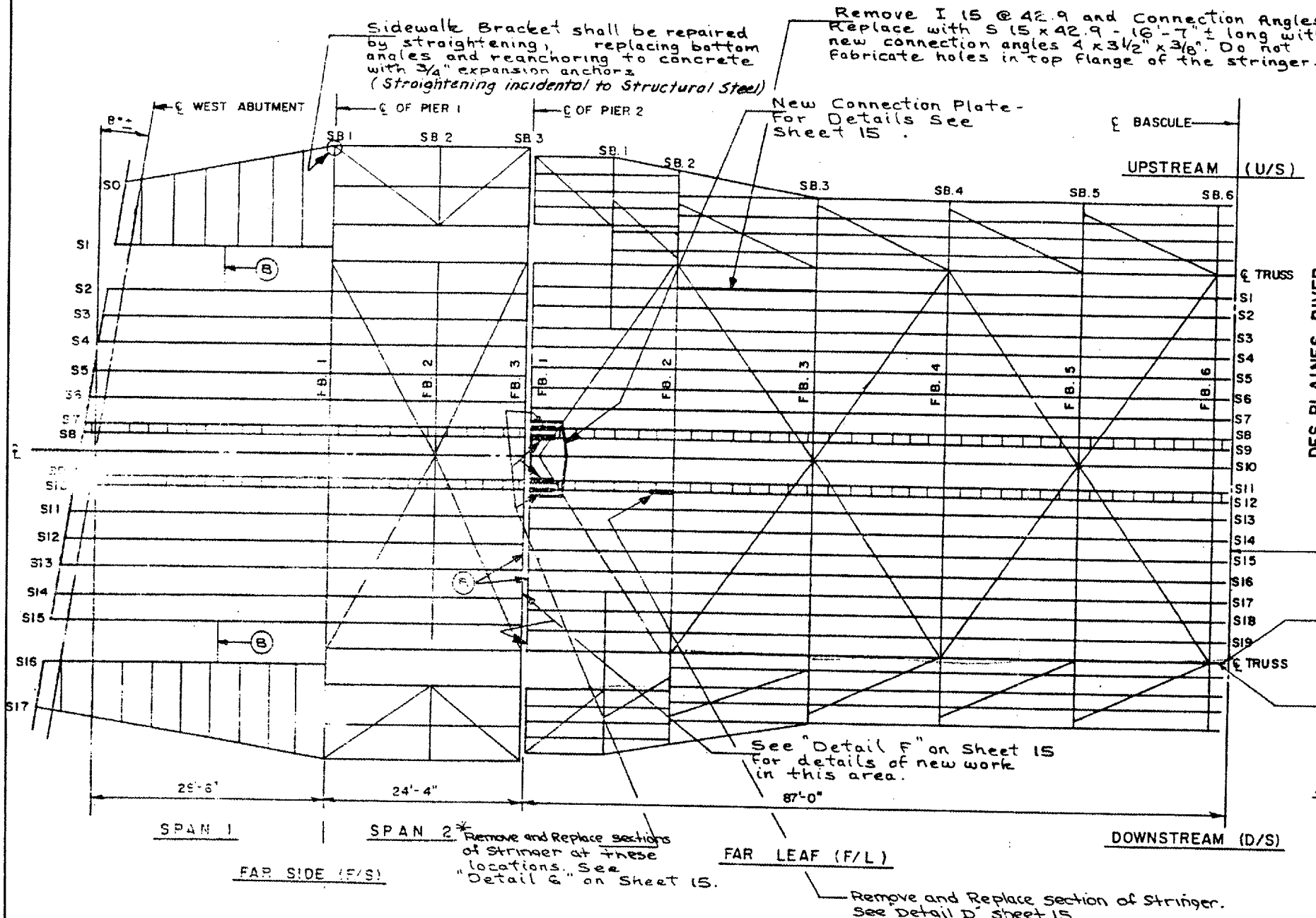
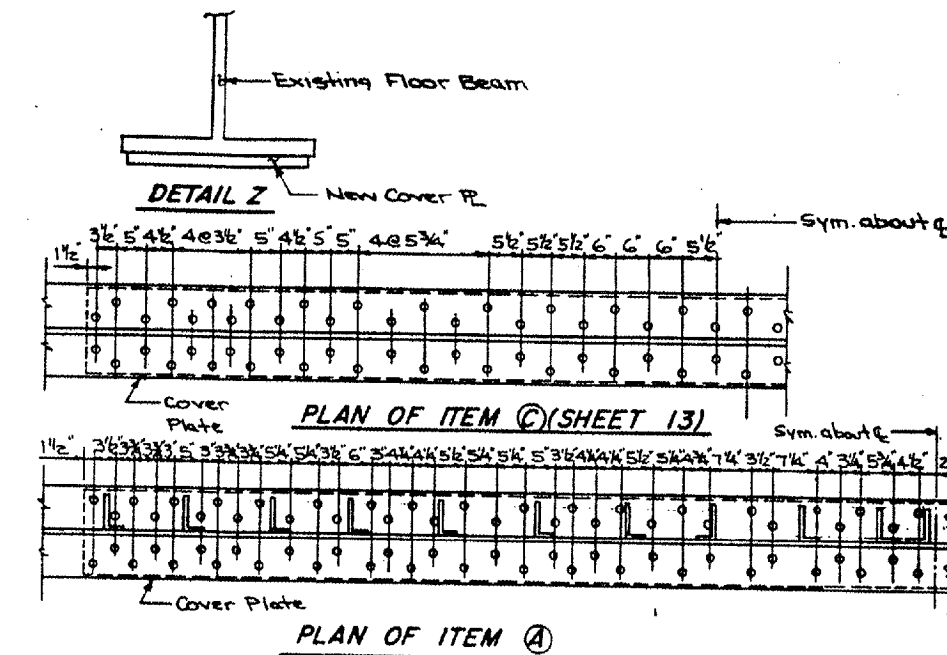


ROUTE	SECTION	COUNTY	TOTAL SHEETS	SHEET NUMBER
VARIOUS	2005-044 I	WILL	12	11



DES PLAINES RIVER



LEGEND

FB — FLOOR BEAM
 SB — SIDEWALK BRACKET
 S — STRINGER

HALF PLAN

(A) Remove bottom flange cover plates and replace with new 7/8" x 16" x 24'-10" plates and 132 ± 7/8" dia. bolts. See detail Z above.

(B) Do not repair diaphragm members. Pour new deck concrete to deflected position.

Rivet Replacement: Rivets that have one head completely rusted off flush with the surface and rivets selected by the Engineer that are severely rusted shall be replaced with the same diameter high strength bolts. The rivets shall be removed by shearing off any remaining head driving or drilling out the shank. Use of flame cutting, adjacent material to be left in place, to facilitate the rivet removal is prohibited unless approved by the Engineer on a case by case basis. See Special Provisions for bid item "Rivet Replacement". The majority of rivet replacement is in the floor beams of the leaves on the side of the bottom flange facing the ϵ of Bascule.

FOR INFORMATION ONLY

ILLINOIS DEPARTMENT OF TRANSPORTATION
 LOC 3 (SN 099-0101)
 CASS ST BRIDGE