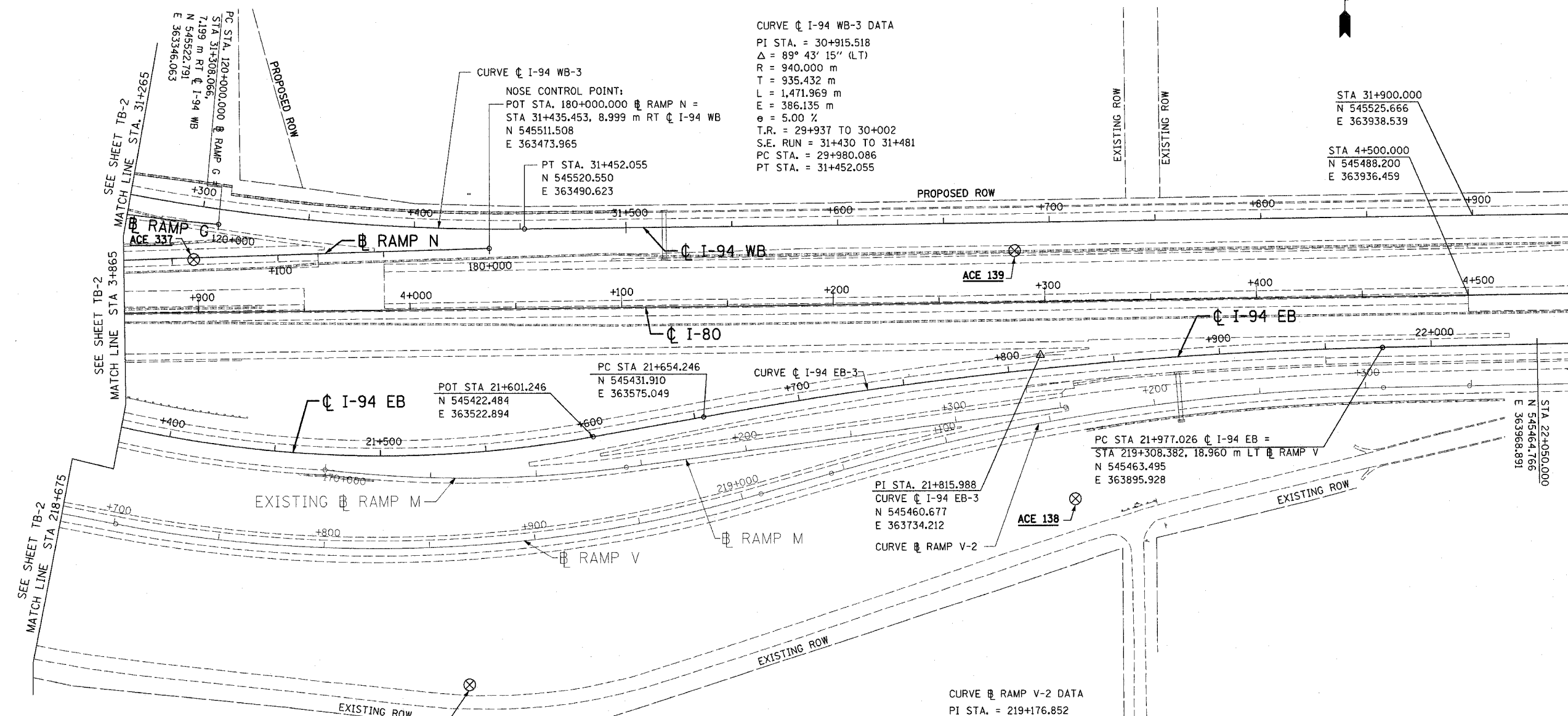


F.A.I. RTE.	SECTION	COUNTY	TOTAL SHEETS	SHEET NO.
80/94	*	COOK	231	25
STA.		TO STA.		
FED. ROAD DIST. NO. 1		ILLINOIS	FED. AID PROJECT	
*(0203.1 & 0304) R-6		CONTRACT # 62105		



CURVE C I-94 WB-3 DATA
 PI STA. = 30+915.518
 $\Delta = 89^\circ 43' 15''$ (LT)
 R = 940.000 m
 T = 935.432 m
 L = 1,471.969 m
 E = 386.135 m
 e = 5.00 %
 T.R. = 29+937 TO 30+002
 S.E. RUN = 31+430 TO 31+481
 PC STA. = 29+980.086
 PT STA. = 31+452.055

CURVE C I-94 WB-3
 NOSE CONTROL POINT:
 POT STA. 180+000.000 @ RAMP N =
 STA 31+435.453, 8.999 m RT @ I-94 WB
 N 545511.508
 E 363473.965

PT STA. 31+452.055
 N 545520.550
 E 363490.623

POT STA 21+601.246
 N 545422.484
 E 363522.894

PC STA 21+654.246
 N 545431.910
 E 363575.049

PC STA 21+977.026 @ I-94 EB =
 STA 219+308.382, 18.960 m LT @ RAMP V
 N 545463.495
 E 363895.928

PI STA. 21+815.988
 CURVE C I-94 EB-3
 N 545460.677
 E 363734.212

CURVE @ RAMP V-2 DATA
 PI STA. = 219+176.852
 $\Delta = 15^\circ 09' 41''$ (RT)
 R = 1,000.000 m
 T = 133.086 m
 L = 264.617 m
 E = 8.817 m
 e = 3.10 %
 T.R. = 218+999 TO 219+051
 S.E. RUN = 219+289 TO 219+369
 PC STA. = 219+043.766
 PT STA. = 219+308.382

CURVE C I-94 EB-3 DATA
 PI STA. = 21+815.988
 $\Delta = 9^\circ 14' 49''$ (RT)
 R = 2,000.000 m
 T = 161.741 m
 L = 322.780 m
 E = 6.529 m
 e = 6.00 %
 T.R. =
 S.E. RUN =
 PC STA. = 21+654.246
 PT STA. = 21+977.026

REVISIONS	
NAME	DATE

ILLINOIS DEPARTMENT OF TRANSPORTATION
 F.A.I. ROUTE 80/94 (INTERSTATE 80/294)

**ALIGNMENT, TIES,
 AND BENCHMARKS**

SCALE: 1:1000
 DATE: JULY 18, 2005

DRAWN BY: CTT
 CHECKED BY: RCH

McDonough Associates Inc.
 Engineers / Architects

NOTE: FOR ALIGNMENT TIES SEE DRAWINGS TB-6 AND TB-7
 FOR BENCHMARKS SEE DRAWING TB-7

TB-3