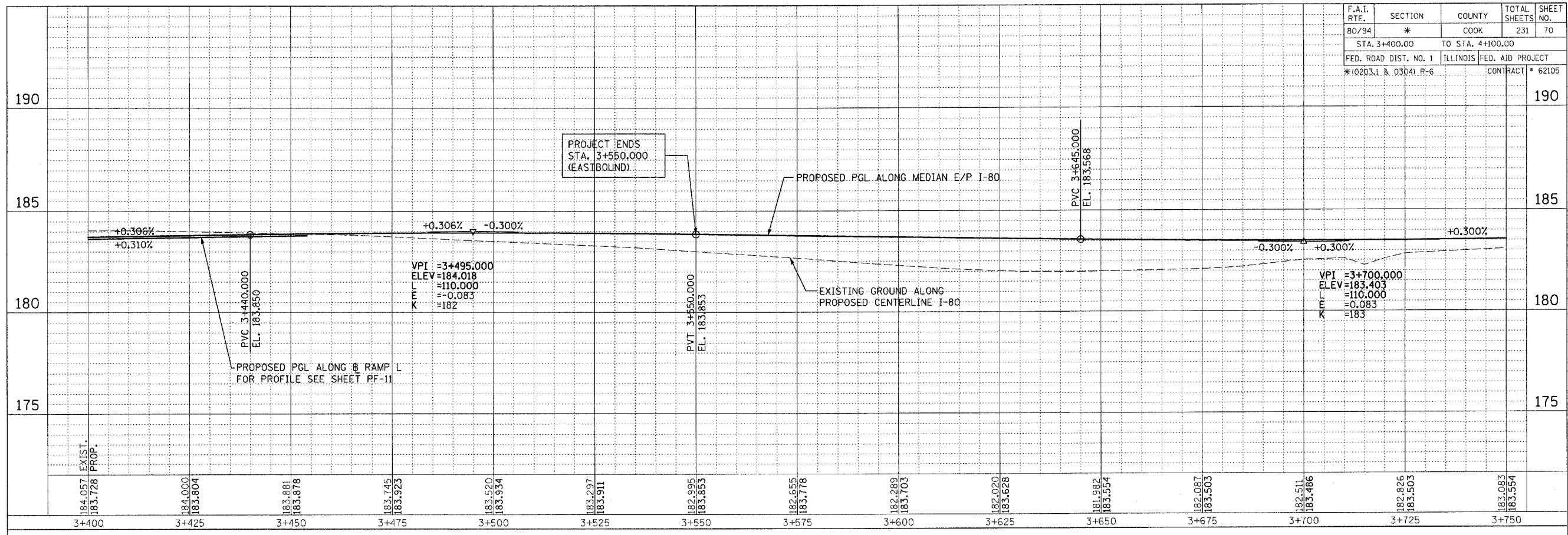
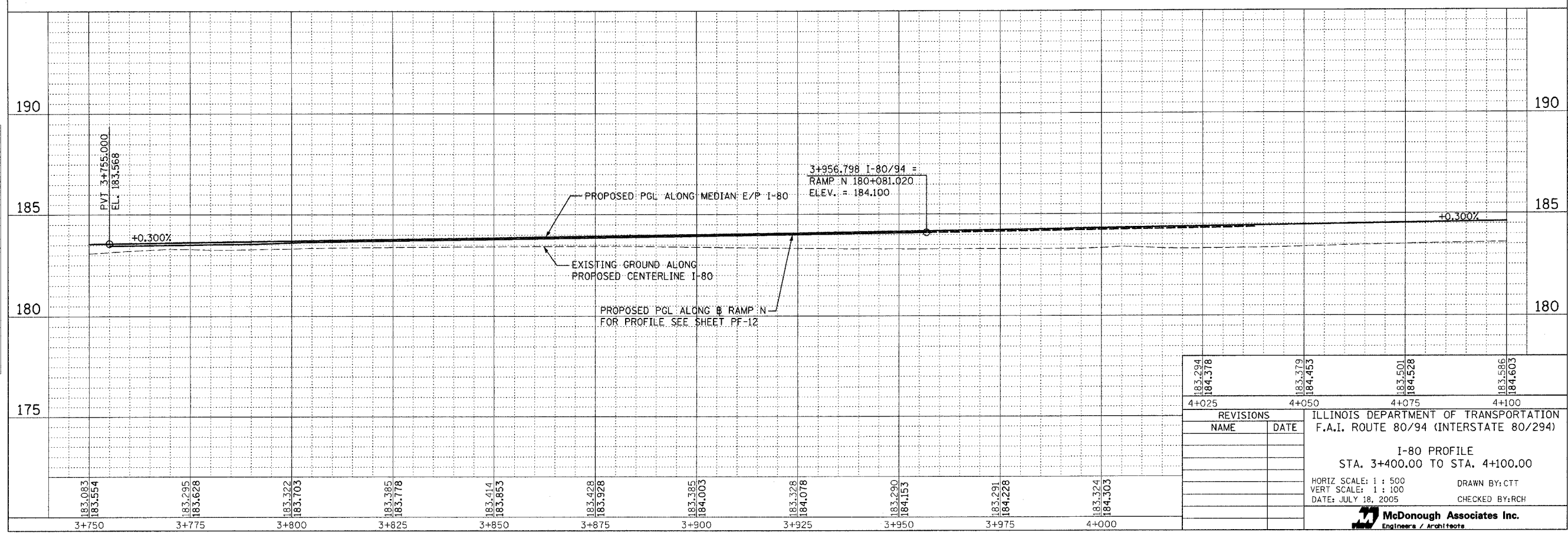


| | | | | |
|-----------------------|---------|------------------|------------------|-----------|
| F.A.I. RTE. | SECTION | COUNTY | TOTAL SHEETS | SHEET NO. |
| 80/94 | * | COOK | 231 | 70 |
| STA. 3+400.00 | | TO STA. 4+100.00 | | |
| FED. ROAD DIST. NO. 1 | | ILLINOIS | FED. AID PROJECT | |
| *10203.1 & 03041 P-6 | | CONTRACT # 62105 | | |

| | | |
|---------------|----|------|
| FINAL SURVEY | BY | DATE |
| SURVEYED | | |
| PLOTTED | | |
| NOTE BOOK | | |
| NO. | | |
| AREAS CHECKED | | |



| | | |
|-----------------|----|------|
| ORIGINAL SURVEY | BY | DATE |
| SURVEYED | | |
| PLOTTED | | |
| NOTE BOOK | | |
| NO. | | |
| AREAS CHECKED | | |



| | | | |
|---|---------|-----------------|---------|
| 183.294 | 183.379 | 183.501 | 183.586 |
| 184.378 | 184.453 | 184.528 | 184.603 |
| 4+025 | 4+050 | 4+075 | 4+100 |
| REVISIONS | | | |
| NAME | DATE | | |
| | | | |
| ILLINOIS DEPARTMENT OF TRANSPORTATION F.A.I. ROUTE 80/94 (INTERSTATE 80/294) | | | |
| I-80 PROFILE STA. 3+400.00 TO STA. 4+100.00 | | | |
| HORIZ SCALE: 1 : 500 | | DRAWN BY: CTT | |
| VERT SCALE: 1 : 100 | | CHECKED BY: RCH | |
| DATE: JULY 18, 2005 | | | |
| McDonough Associates Inc. Engineers / Architects | | | |