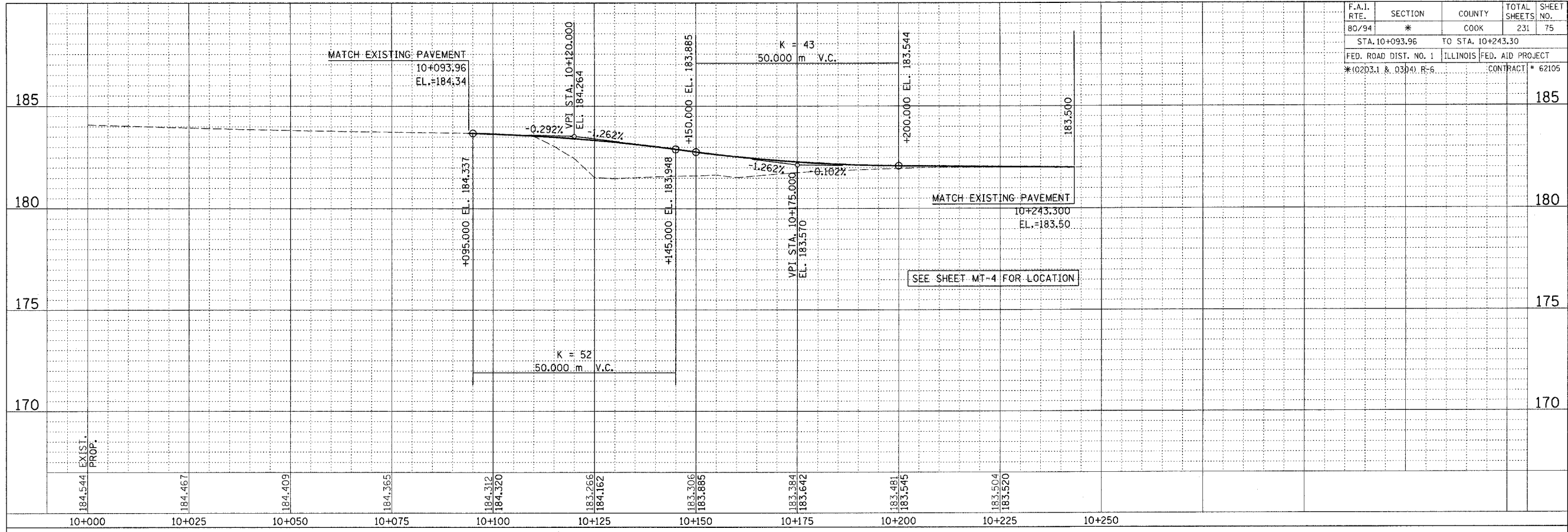
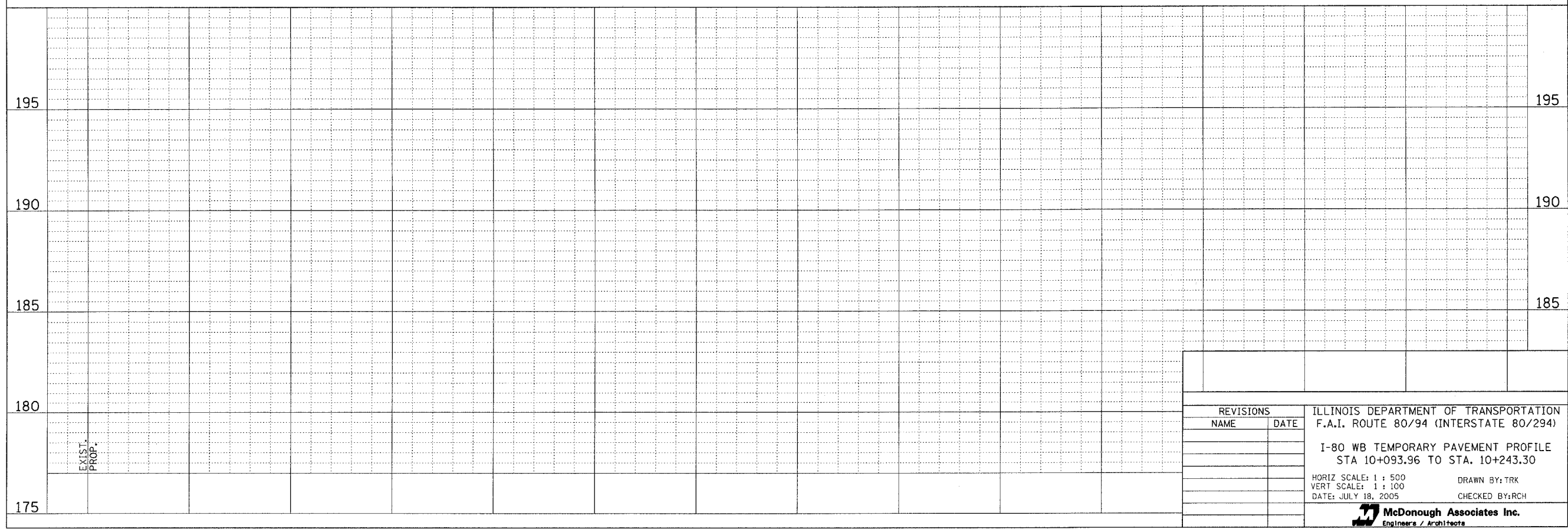


F.A.I. RTE.	SECTION	COUNTY	TOTAL SHEETS	SHEET NO.
80/94	*	COOK	231	75
STA. 10+093.96		TO STA. 10+243.30		
FED. ROAD DIST. NO. 1		ILLINOIS		FED. AID PROJECT
*(02D3.1 & 03D4) R-6		CONTRACT * 62105		

FINAL SURVEY	SURVEYED	BY	DATE
NOTE BOOK NO.	PLOTTED		
	TEMPLATE		
	AREAS CHECKED		



ORIGINAL SURVEY	SURVEYED	BY	DATE
NOTE BOOK NO.	PLOTTED		
	TEMPLATE		
	AREAS CHECKED		



REVISIONS		ILLINOIS DEPARTMENT OF TRANSPORTATION F.A.I. ROUTE 80/94 (INTERSTATE 80/294)
NAME	DATE	
		I-80 WB TEMPORARY PAVEMENT PROFILE STA 10+093.96 TO STA. 10+243.30

HORIZ SCALE: 1 : 500
 VERT SCALE: 1 : 100
 DATE: JULY 18, 2005
 DRAWN BY: TRK
 CHECKED BY: RCH

McDonough Associates Inc.
 Engineers / Architects