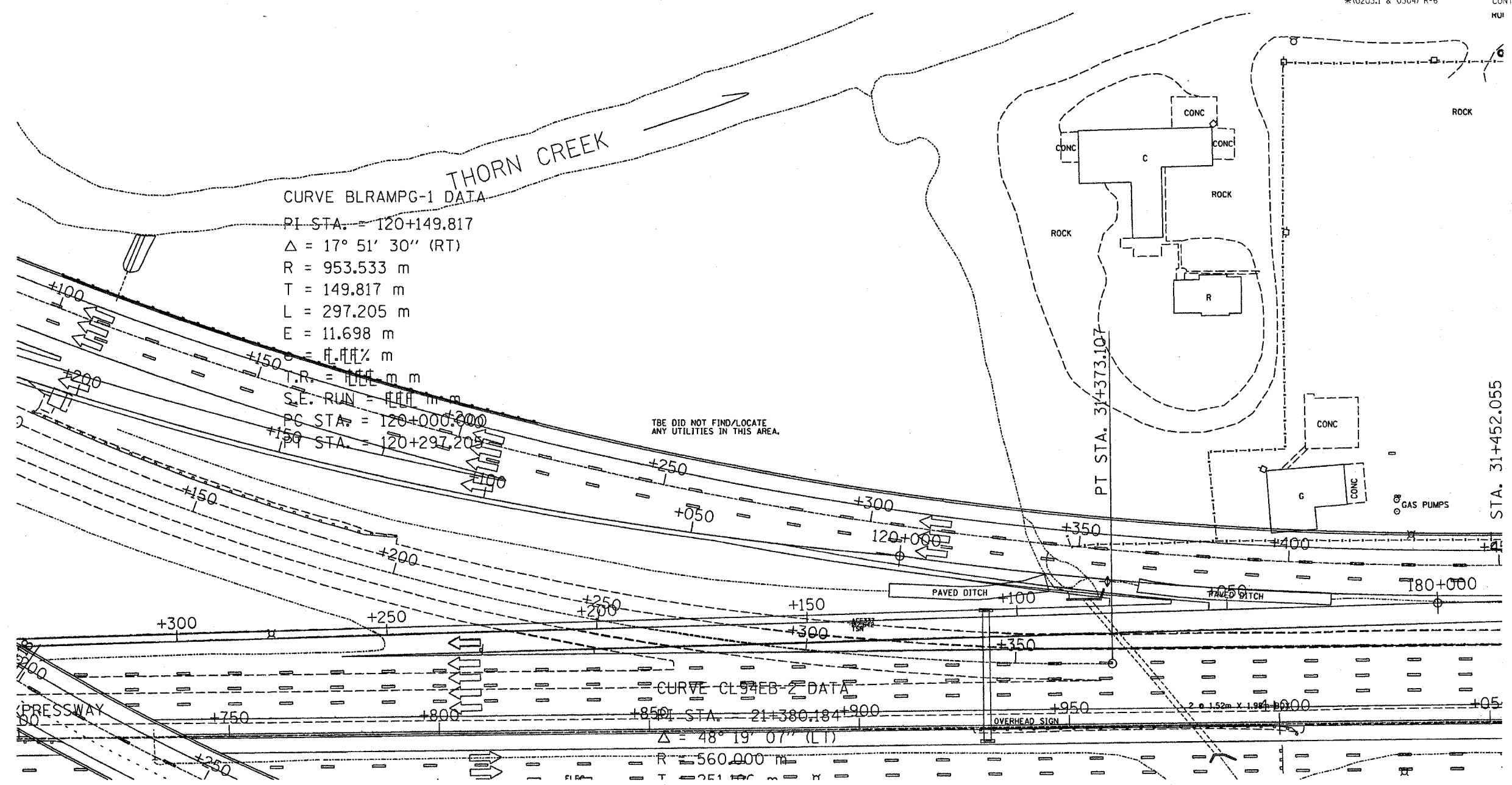


F.A. RTE.	SECTION	COUNTY	TOTAL SHEETS	SHEET NO.
80/94	SEE BELOW	COOK	231	98
STA. TO STA.		ILLINOIS FED. AID PROJECT		
FED. ROAD DIST. NO.		CONTRACT # 62105		
*(0203.1 & 0304) R-6		HUI		



— T — T —	TELEPHONE
— W — W —	WATER
— G — G —	GAS
— CTV — CTV —	CABLE TELEVISION
— FO — FO —	FIBER OPTIC
— E — E —	ELECTRIC

TBE GROUP, INC.
 CIVIL ENGINEERING • TRANSPORTATION • ENVIRONMENTAL
 • PLANNING • UTILITY ENGINEERING/LOCATING
 SOUTHERN REGION: FL, GA, SC, NC
 NORTHERN REGION: IL, IN, MI, OH, MD, NJ, NY
 PA, VA, CANADA
 WESTERN REGION: AZ, NV, NM, TX, CA, OR, UT, WA



205 W. WACKER DRIVE
 SUITE 1020
 CHICAGO, IL 60606
 (312) 704-1970

Utilities shown on these plans as depicted in the legend have been investigated by TBE Group, Inc in accordance with SUE Industry Standards as of 2/8/02. All other information shown has been provided to TBE Group, Inc by others.

IL09500122
 TBE SUE PAGE NO: 50 of 52
 Signature *Robert J. Demers Jr.*
 SUE Quality Level "A" : Test Holes
 SUE Quality Level "B" : Designating

REVISIONS		ILLINOIS DEPARTMENT OF TRANSPORTATION
NAME	DATE	
		E. of IL RT. 83/US RT. 6 to E. Burnham Ave.
		I-80/I-94 Burnham Ave. to State Line
		I-80/I-94 (Tollway) E. of I-94 to W. of RT. 83/US 6.
		I-94/IL RT. 394 S. of US 6 to 186th Street (N. bound & S. bound)
		Contract No. 62110, 62111, 62114, 62105, 62107, 62108
		SCALE : 500 DRAWN BY : JAC
		SOL "B" DATE : 2/8/02 CHECKED BY :

SU-9