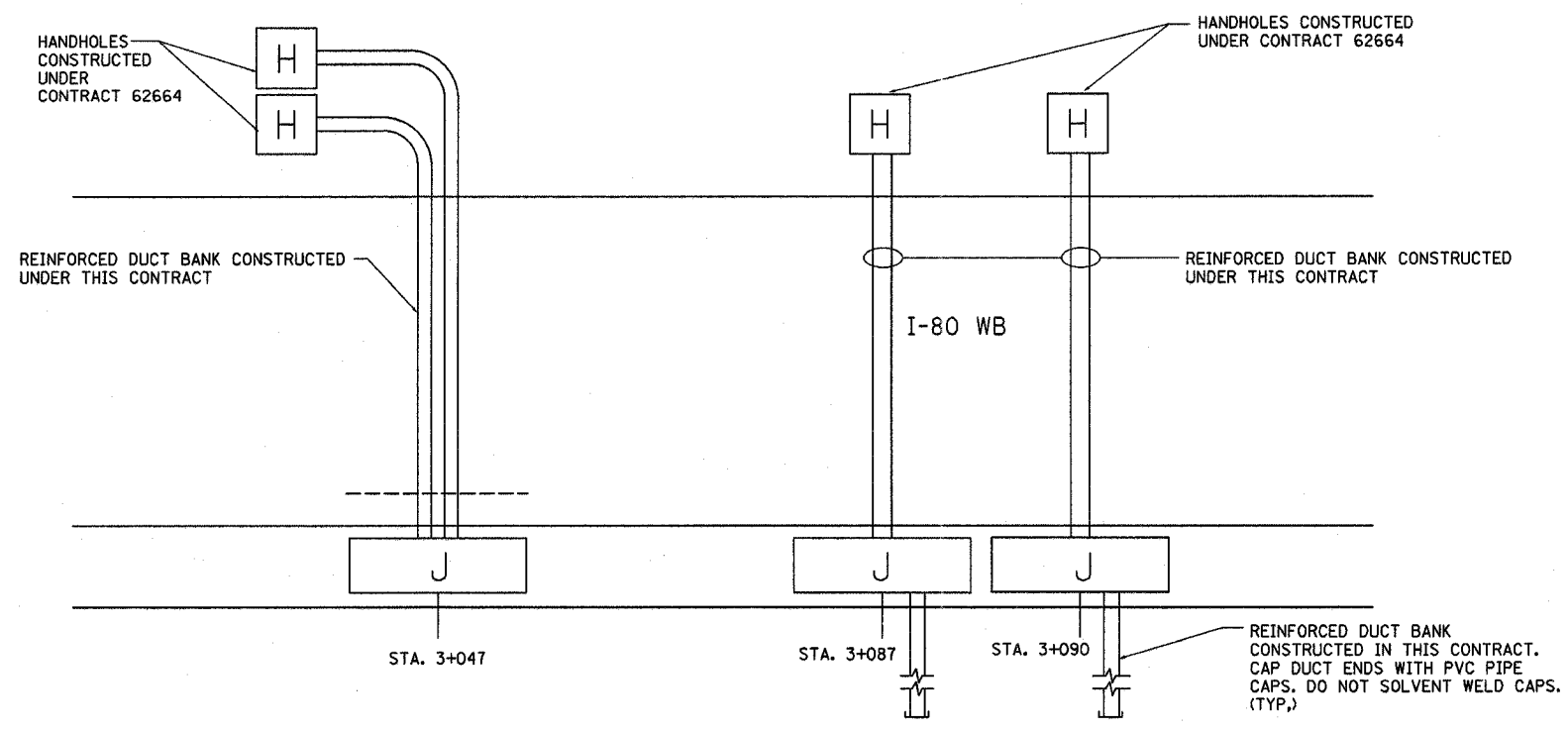
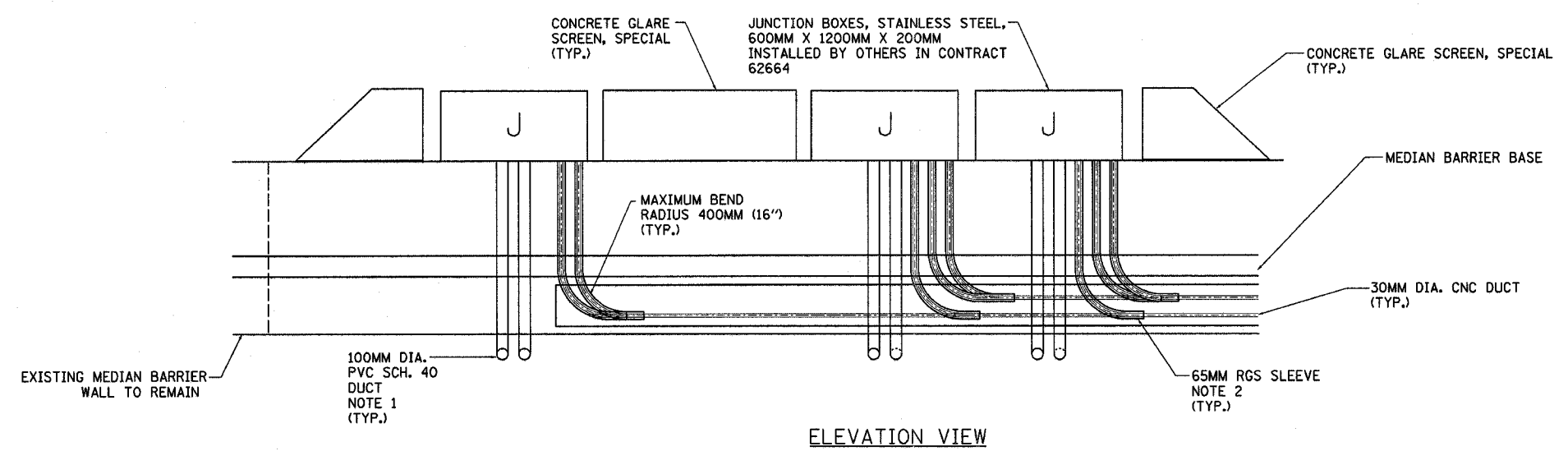


F.A.I. RTE.	SECTION	COUNTY	TOTAL SHEETS	SHEET NO.
80/94	*	COOK	231	158
STA.		TO STA.		
FED. ROAD DIST. NO. 1		ILLINOIS	FED. AID PROJECT	
*(0203.1 & 0304) R-6		CONTRACT # 62105		




PARTIAL PLAN VIEW

- NOTES:**
1. EXTEND 100MM DIA. PVC ENCASED IN CONCRETE 1M BEYOND THE MEDIAN BARRIER WALL AND EITHER TRANSITION TO REINFORCED CONCRETE DUCT BANK OR CONNECT TO EXISTING REINFORCED CONCRETE DUCT BANK. THE COST OF CONCRETE ENCASEMENT SHALL BE INCLUDED IN THE COST OF "CONDUIT EMBEDDED IN STRUCTURE, 100MM DIA. PVC". NO SEPARATE PAYMENT WILL BE MADE.
 2. THE COST OF 65MM RGS CONDUIT INCLUDING INDICATED ELBOWS, METALLIC TO NON-METALLIC COUPLINGS AND FITTING SHALL BE INCLUDED IN THE COST OF "CONDUIT EMBEDDED IN STRUCTURE, 65MM DIA., GALVANIZED STEEL. NO SEPARATE PAYMENT WILL BE MADE.



ELEVATION VIEW

ED16-3

REVISIONS		ILLINOIS DEPARTMENT OF TRANSPORTATION F.A.I. ROUTE 80/94 (INTERSTATE 80/294)
NAME	DATE	
		DETAILS FOR FIBER OPTIC DUCT BANK TERMINATIONS - WEST I-80 DRAWN BY: MB CHECKED BY: KMY DATE: JULY 18, 2005  McDonough Associates Inc. Engineers / Architects