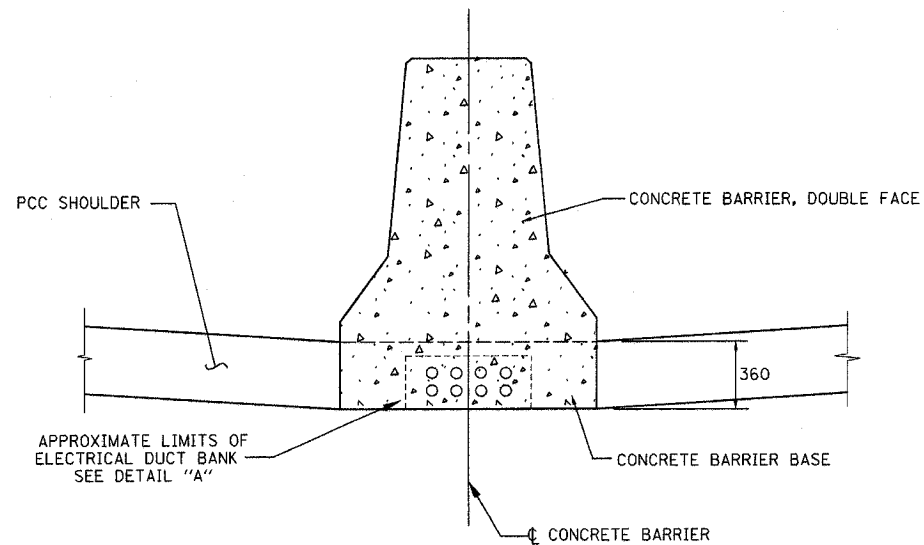
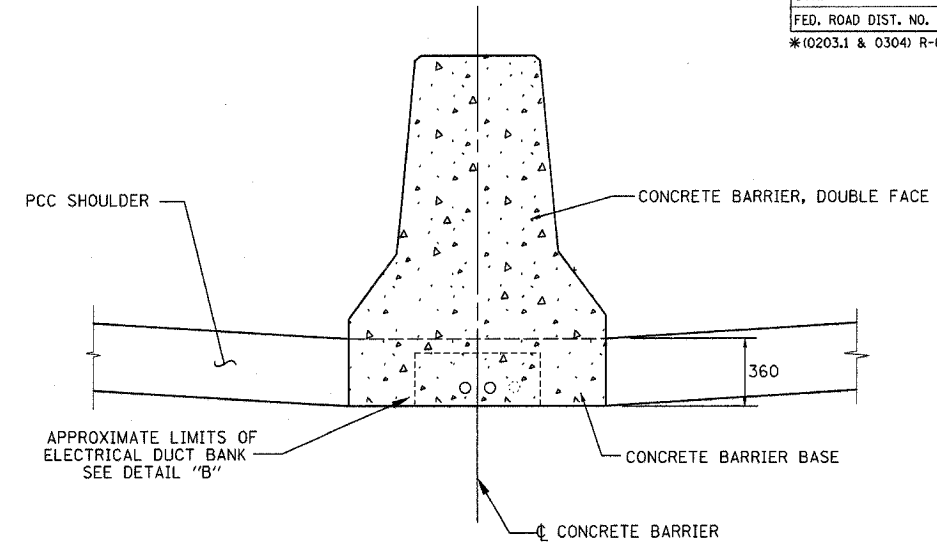


F.A.I. RTE.	SECTION	COUNTY	TOTAL SHEETS	SHEET NO.
80/94	*	COOK	231	159
STA.	TO STA.			
FED. ROAD DIST. NO. 1		ILLINOIS	FED. AID PROJECT	
*10203.1 & 0304) R-6		CONTRACT # 62105		



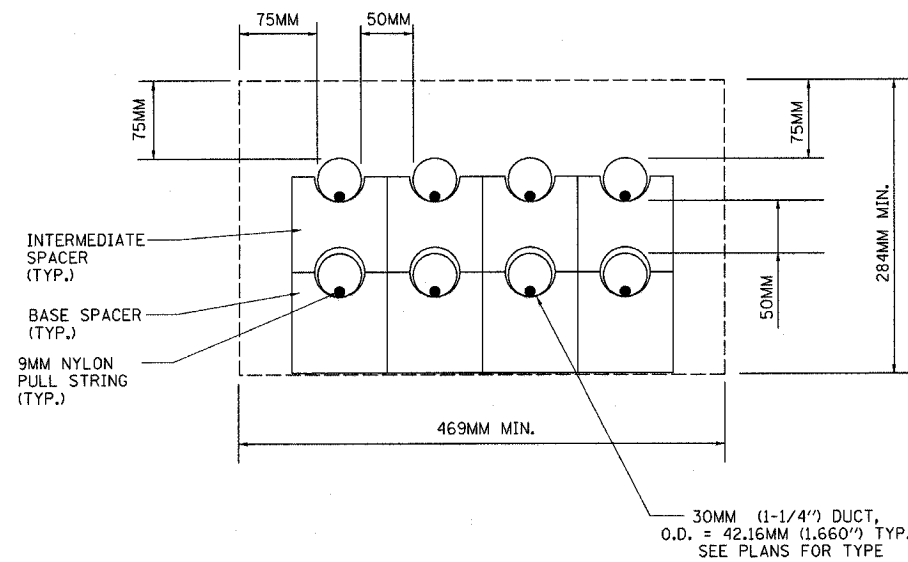
### CONCRETE BARRIER, DOUBLE FACE

SHOWING 8 DUCT BANK



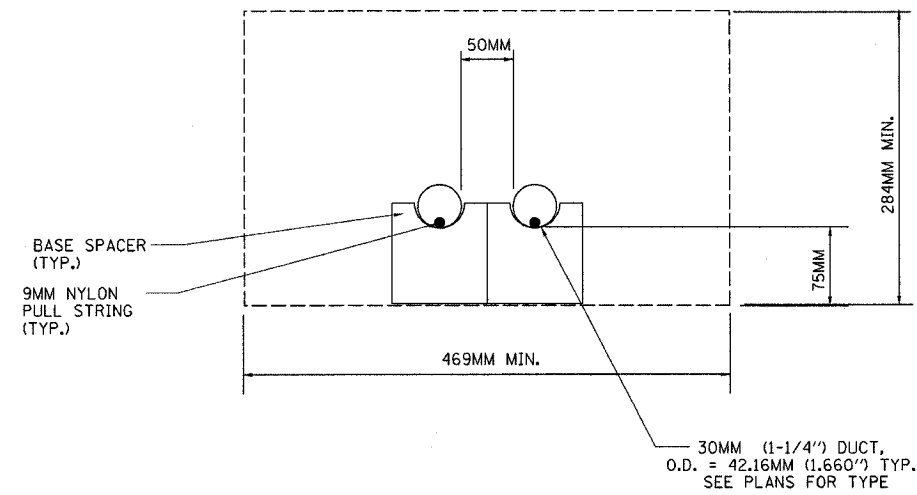
### CONCRETE BARRIER, DOUBLE FACE

SHOWING 2 DUCT BANK



### DETAIL "A"

SHOWING 8 CONDUITS EMBEDDED IN STRUCTURE



### DETAIL "B"

SHOWING 2 CONDUITS EMBEDDED IN STRUCTURE

**NOTES:**

- 1) SEE "CONCRETE BARRIER DETAILS" FOR ADDITIONAL DETAILS OF THE CONCRETE BARRIER AND CONCRETE BARRIER BASE.
- 2) SEE PLANS FOR TYPES OF CONDUIT ENCASED IN CONCRETE.

ED16-4

REVISIONS		ILLINOIS DEPARTMENT OF TRANSPORTATION F.A.I. ROUTE 80/94 (INTERSTATE 80/294)
NAME	DATE	
		<b>DETAILS FOR CONDUITS EMBEDDED IN CONCRETE BARRIER BASE</b>  DRAWN BY: MB CHECKED BY: KMY DATE: MARCH 08, 2005 McDonough Associates Inc. Engineers / Architects