

F.A.I. RTE.	SECTION	COUNTY	TOTAL SHEETS	SHEET NO.
80/94	*	COOK	231	176
STA.		TO STA.		
FED. ROAD DIST. NO. 1		ILLINOIS FED. AID PROJECT		
*(0203.1 & 0304) R-6		CONTRACT # 62105		

REINFORCEMENT BAR SCHEDULE

(Quantities shown for one wall)

Bar	No.	Size	Length (m)	Shape
h(E)	66	#15	1.40	—
w(E)	12	#15	3.41	—
w ₁ (E)	24	#15	2.89	—
n(E)	56	#15	1.04	—

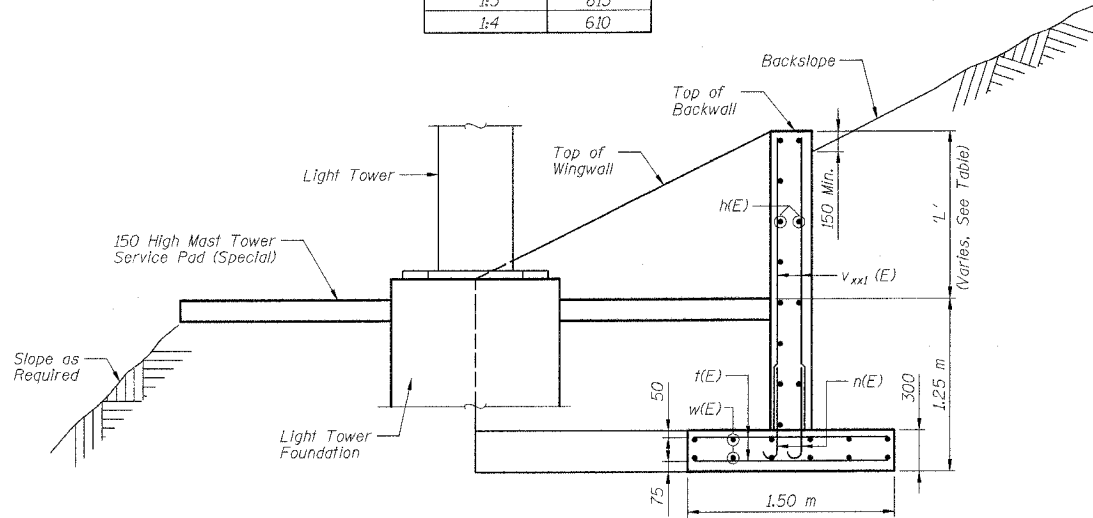
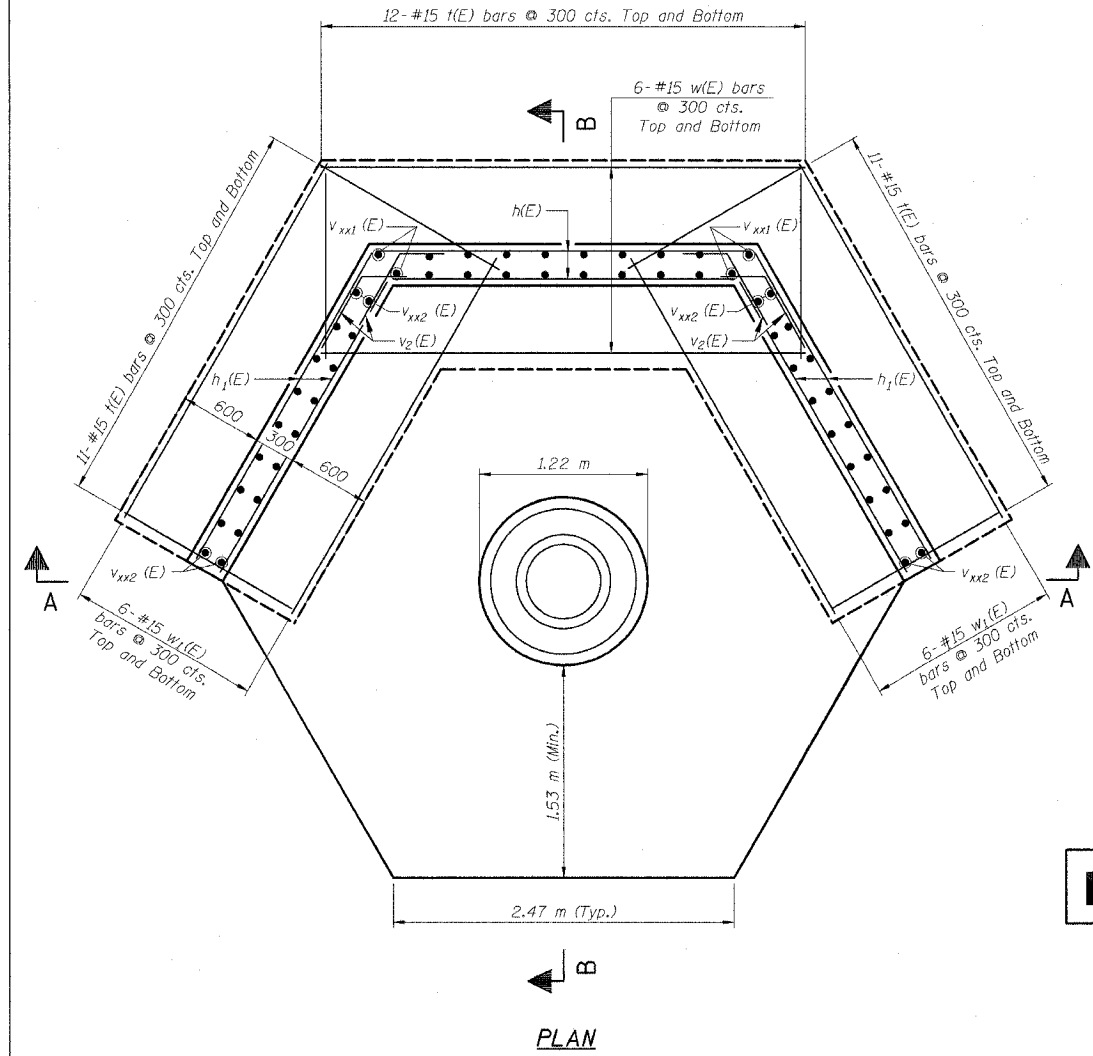
FOR BACKSLOPE = 1:2				
h(E)	12	#15	2.72	—
h ₁ (E)	24	#15	2.54	—
v _{B1} (E)	20	#15	2.12	—
v _{B2} (E)	18	#15	3.04	—
v ₂ (E)	24	#15	0.90	—

FOR BACKSLOPE = 1:3				
h(E)	11	#15	2.72	—
h ₁ (E)	22	#15	2.54	—
v _{B1} (E)	20	#15	1.71	—
v _{B2} (E)	18	#15	2.68	—
v ₂ (E)	22	#15	0.90	—

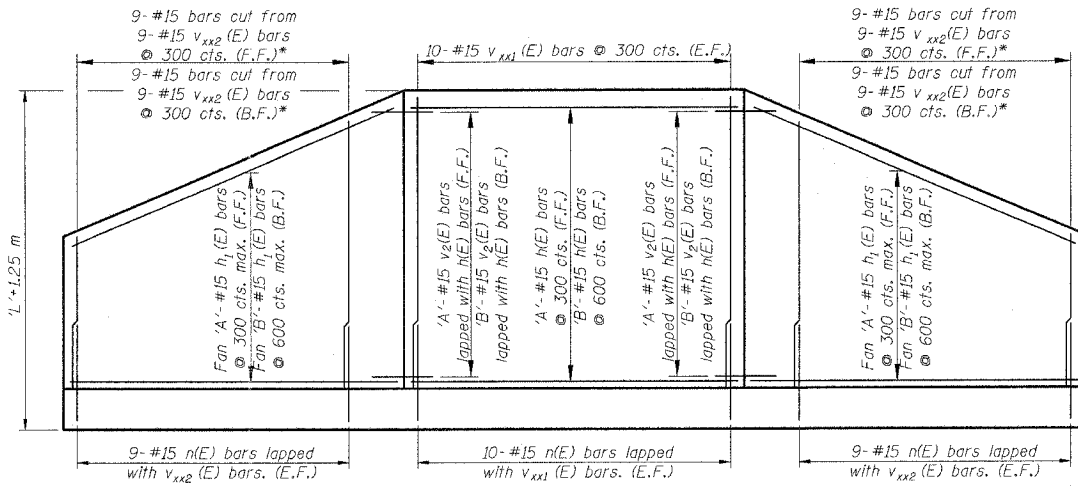
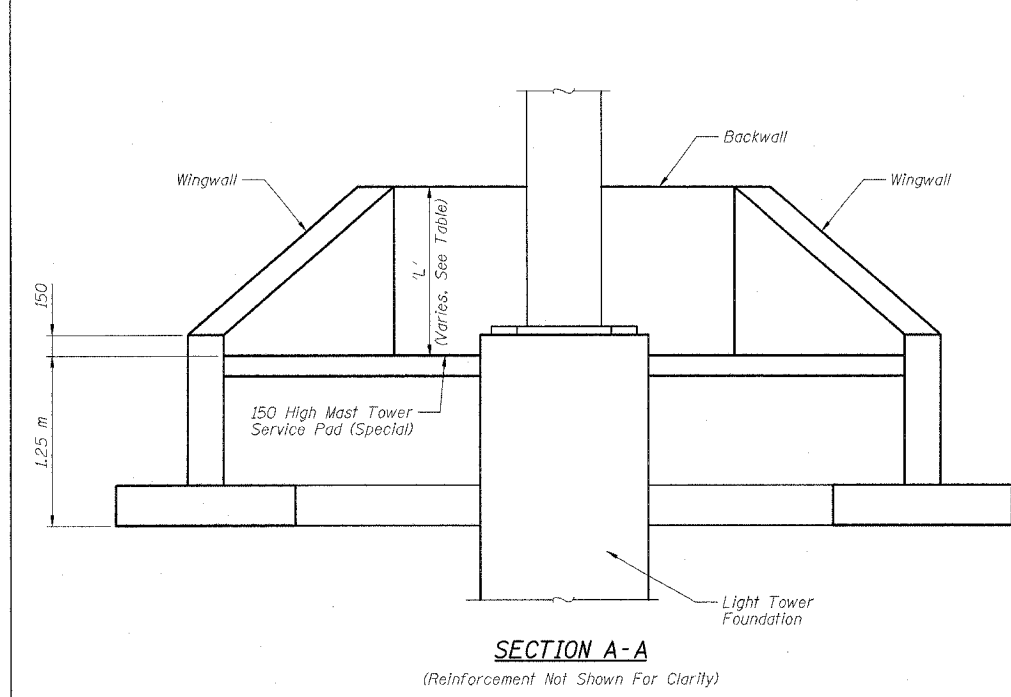
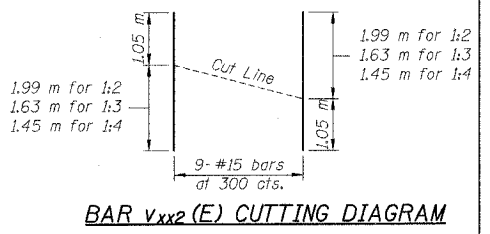
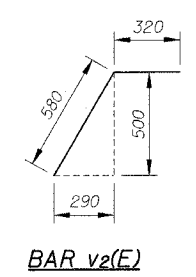
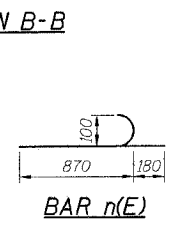
FOR BACKSLOPE = 1:4				
h(E)	9	#15	2.72	—
h ₁ (E)	18	#15	2.54	—
v _{B1} (E)	20	#15	1.51	—
v _{B2} (E)	18	#15	2.50	—
v ₂ (E)	18	#15	0.90	—

WALL STEM HEIGHT TABLE

BACKSLOPE	'L'
1:2	1.22 m
1:3	813
1:4	610



FOR INFORMATION ONLY



h₁(E) BAR QUANTITY TABLE

BACKSLOPE	'A'	'B'
1:2	8	4
1:3	7	4
1:4	6	3

*Note: Cut v_{xx2}(E) bars in field to fit front face of wingwall, and use remainder in the backface of wingwall (Typ. both wingwalls)

NOTES:

- All dimensions in millimeters unless otherwise shown.
- Reinforcement bars designated (E) shall be epoxy coated.
- For location of Light Tower Foundations, see Roadway Lighting Plan Sheets ___ thru ___.
- See Sheet ___ for High Mast Light Tower Foundation Details.
- For Backslopes less than 1:4, grade backslope as necessary to eliminate wall.
- "xx" designation in bar marks represent backslope conditions. bars indicated thus v_{1:3}(E) indicate 1:3 backslope.
- Cost of reinforcement bars and concrete shall be included in the pay item for "High Mast Tower Service Pad (Special)"

MINIMUM BAR LAPS:
#15 bar - 640

REVISIONS	
NAME	DATE

ILLINOIS DEPARTMENT OF TRANSPORTATION
F.A.I. ROUTE 80/94 (KINGERY EXPRESSWAY)

HIGH MAST FOUNDATION SERVICE PAD & WALL DETAILS

SCALE: DATE 07/03
DRAWN BY ACE/CAD
CHECKED BY

AMERICAN CONSULTING ENGINEERS