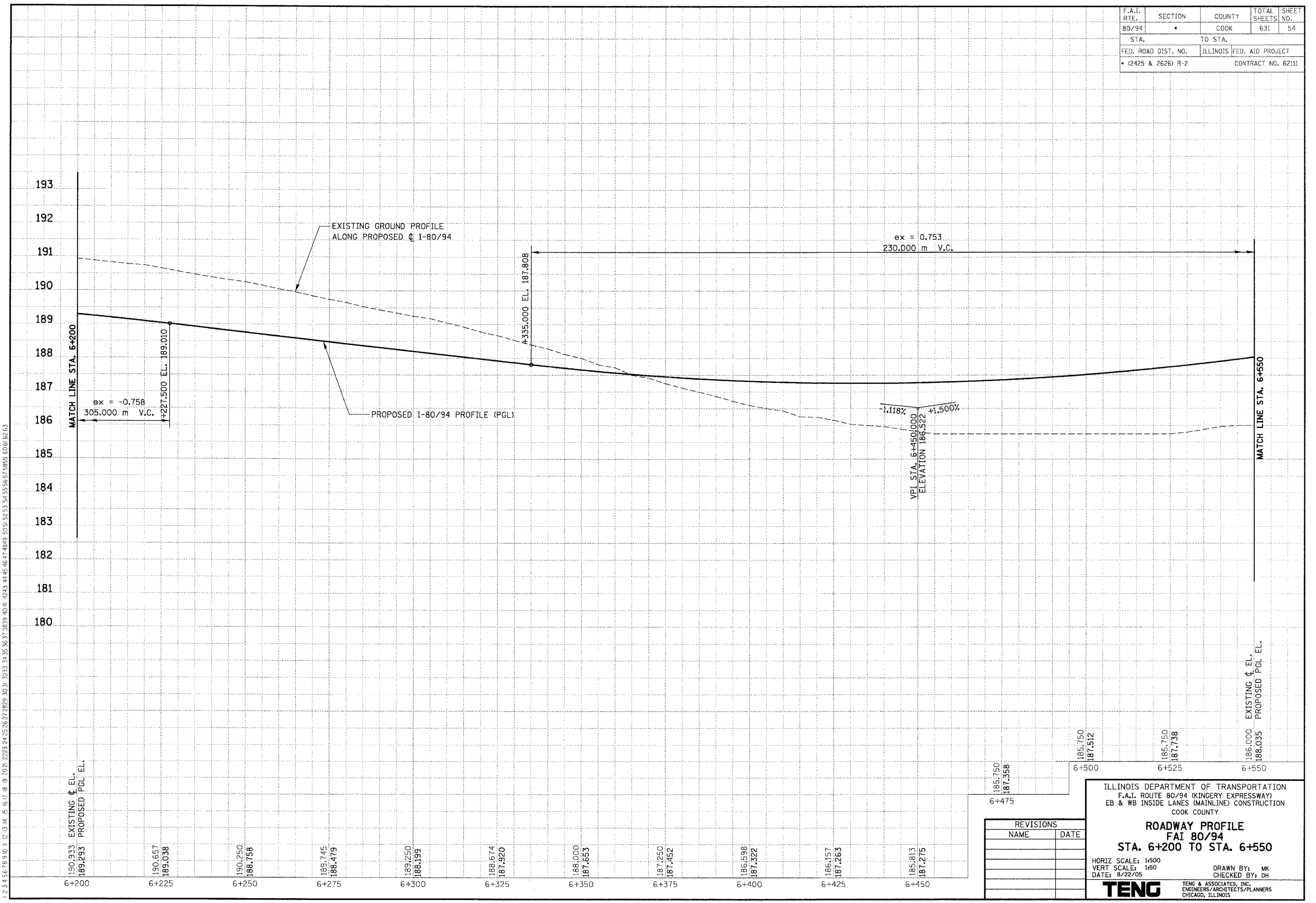


F.A.I. RTE. 80/94	SECTION •	COUNTY COOK	TOTAL SHEETS 631	SHEET NO. 54
STA.		TO STA.		
FED. ROAD DIST. NO. • (2425 & 2626) R-2		ILLINOIS FED. AID PROJECT CONTRACT NO. 62111		

PRELIMINARY SURVEYED SURVEY PLOTTED AREAS CHECKED	BY	DATE
NO.		

ORIGINAL SURVEYED SURVEY PLOTTED AREAS CHECKED	BY	DATE
NO.		

\FRIT002A.DGN, \AB89002A.DGN, \FRIT002A.DGN, \FRIT002A.DGN, \FRIT002A.DGN, \FRIT002A.DGN, \FRIT002A.DGN, \FRIT002A.DGN
 8-18-2005, 10:08:26 1:\DOCUMENT\831750\CIVIL\DRAWING\1703\2A.DGN
 1 2 3 4 5 6 7 8 9 10 11 12 13 14 15 16 17 18 19 20 21 22 23 24 25 26 27 28 29 30 31 32 33 34 35 36 37 38 39 40 41 42 43 44 45 46 47 48 49 50 51 52 53 54 55 56 57 58 59 60 61 62 63



REVISIONS	
NAME	DATE

ILLINOIS DEPARTMENT OF TRANSPORTATION
 F.A.I. ROUTE 80/94 (KINGERY EXPRESSWAY)
 EB & WB INSIDE LANES (MAINLINE) CONSTRUCTION
 COOK COUNTY
ROADWAY PROFILE
FAI 80/94
STA. 6+200 TO STA. 6+550
 HORIZ SCALE: 1:500
 VERT SCALE: 1:50
 DATE: 8/22/05
 DRAWN BY: MK
 CHECKED BY: DH
TENG TENG & ASSOCIATES, INC.
 ENGINEERS/ARCHITECTS/PLANNERS
 CHICAGO, ILLINOIS