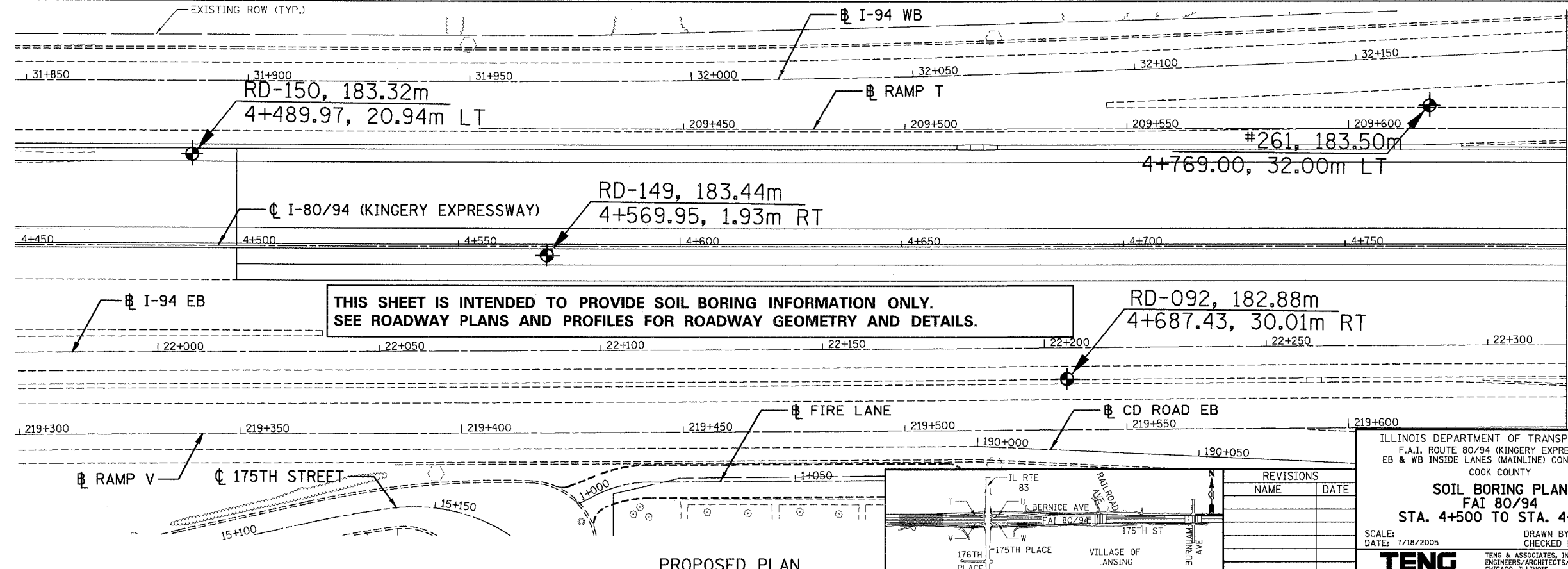
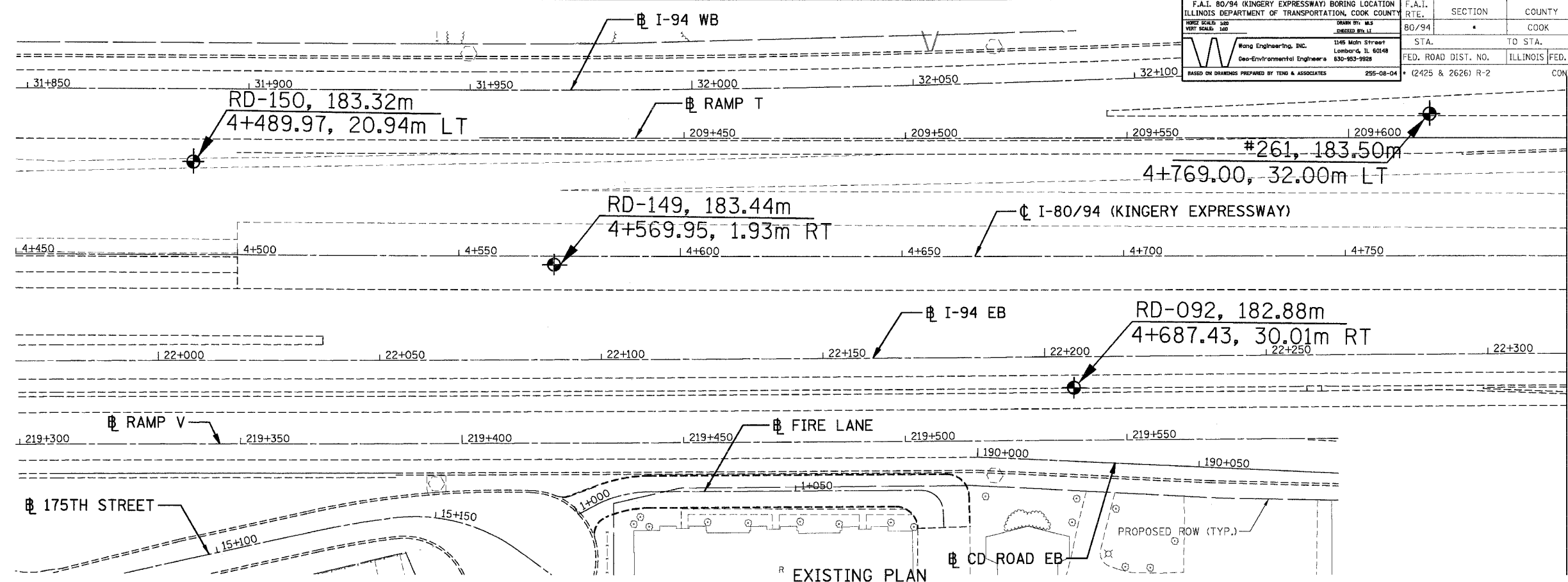
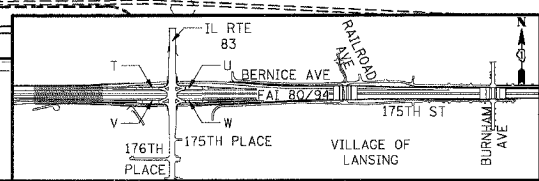


F.A.I. 80/94 (KINGERY EXPRESSWAY) BORING LOCATION ILLINOIS DEPARTMENT OF TRANSPORTATION, COOK COUNTY	F.A.I. RTE. 80/94	SECTION *	COUNTY COOK	TOTAL SHEETS 631	SHEET NO. 106
DATE: 08-04	STA. 4+500 TO STA. 4+800	ILLINOIS FED. AID PROJECT (2425 & 2626) R-2		CONTRACT NO. 62111	
WONG ENGINEERING, INC. 1345 Mich Street Lombard, IL 60148 Geo-Environmental Engineers 630-953-9928 BASED ON DRAWINGS PREPARED BY TENG & ASSOCIATES 255-08-04					



THIS SHEET IS INTENDED TO PROVIDE SOIL BORING INFORMATION ONLY.  
SEE ROADWAY PLANS AND PROFILES FOR ROADWAY GEOMETRY AND DETAILS.



REVISIONS	
NAME	DATE

ILLINOIS DEPARTMENT OF TRANSPORTATION  
F.A.I. ROUTE 80/94 (KINGERY EXPRESSWAY)  
EB & WB INSIDE LANES (MAINLINE) CONSTRUCTION  
COOK COUNTY

**SOIL BORING PLAN**  
FAI 80/94  
STA. 4+500 TO STA. 4+800

SCALE: DATE: 7/18/2005  
DRAWN BY: CHECKED BY:  
**TENG** TENG & ASSOCIATES, INC.  
ENGINEERS/ARCHITECTS/PLANNERS  
CHICAGO, ILLINOIS

\\\VLE-4500-4800.DGN, \\VAB99002A.DGN  
 T:\DOCUMENT\B377750\CIVIL\DGN\B377750.DGN  
 1.2.3.4.5.6.7.8.9.10.11.12.13.14.15.16.17.18.19.20.21.22.23.24.25.26.27.28.29.30.31.32.33.34.35.36.37.38.39.40.41.42.43.44.45.46.47.48.49.50.51.52.53.54.55.56.57.58.59.60.61.62.63

MATCH LINE STA. 4+800.000 I-80/94