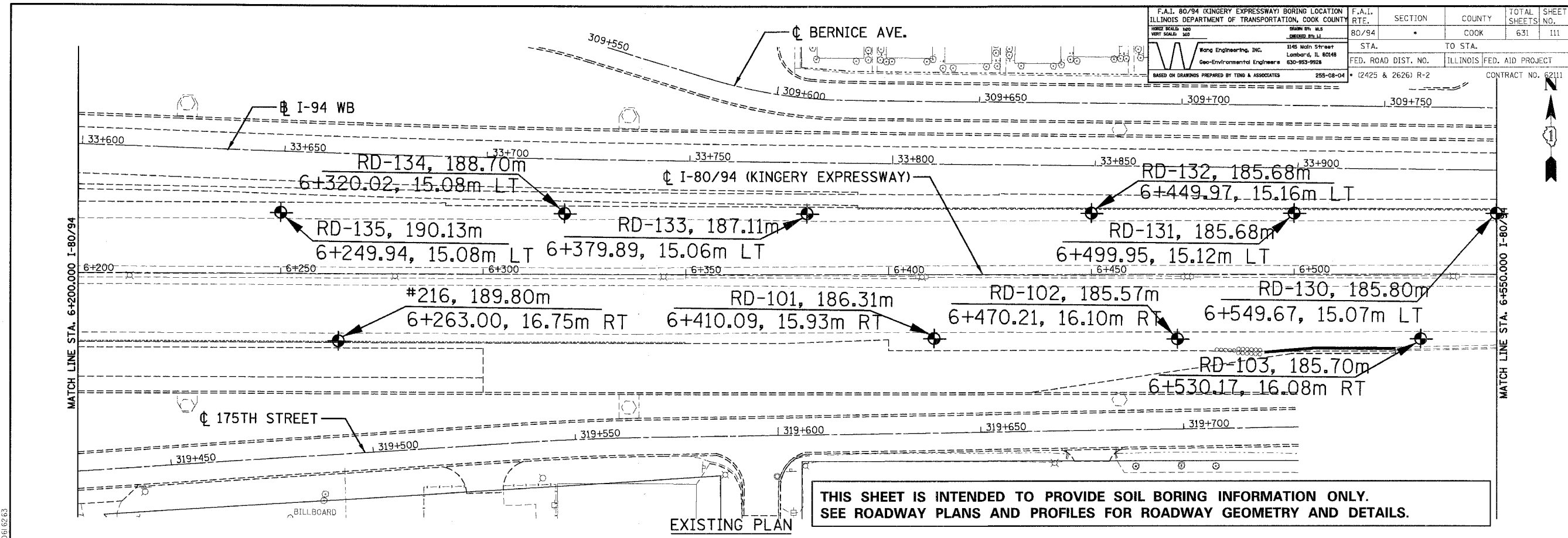
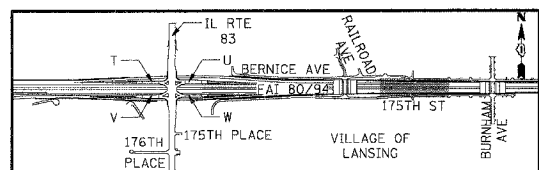
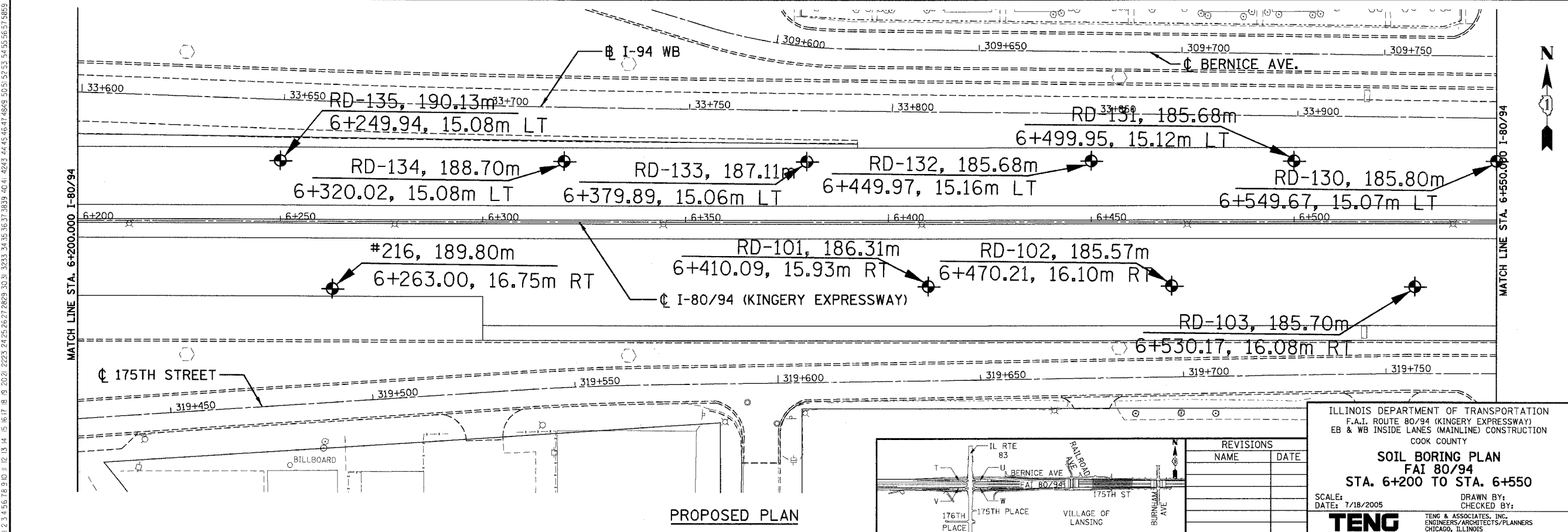


F.A.I. 80/94 (KINGERY EXPRESSWAY) BORING LOCATION ILLINOIS DEPARTMENT OF TRANSPORTATION, COOK COUNTY	F.A.I. RTE. 80/94	SECTION	COUNTY COOK	TOTAL SHEETS 631	SHEET NO. 111
DATE: 7/18/2005 SCALE: 1"=100'	STA. 6+200 TO STA. 6+550	TO STA.	ILLINOIS FED. AID PROJECT (2425 & 2626) R-2	CONTRACT NO. 62111	
WONG ENGINEERING, INC. 1146 North Street Lombard, IL 60148 Geo-Environmental Engineers 630-953-9928 255-08-04 BASED ON DRAWINGS PREPARED BY TENG & ASSOCIATES					



THIS SHEET IS INTENDED TO PROVIDE SOIL BORING INFORMATION ONLY.
SEE ROADWAY PLANS AND PROFILES FOR ROADWAY GEOMETRY AND DETAILS.



REVISIONS	
NAME	DATE

ILLINOIS DEPARTMENT OF TRANSPORTATION
F.A.I. ROUTE 80/94 (KINGERY EXPRESSWAY)
EB & WB INSIDE LANES (MAINLINE) CONSTRUCTION
COOK COUNTY

SOIL BORING PLAN
FAI 80/94
STA. 6+200 TO STA. 6+550

SCALE: DATE: 7/18/2005
DRAWN BY: CHECKED BY:
TENG & ASSOCIATES, INC.
ENGINEERS/ARCHITECTS/PLANNERS
CHICAGO, ILLINOIS

.\\RE-6200-6550.DGN, .\\V899002A.DGN
 7-2-2005, 10:36:16
 T:\DOCUMENT\331750\CIVIL\DRAWING\0100625.DGN
 12.3.4.5.6.7.8.9.10.11.12.13.14.15.16.17.18.19.20.21.22.23.24.25.26.27.28.29.30.31.32.33.34.35.36.37.38.39.40.41.42.43.44.45.46.47.48.49.50.51.52.53.54.55.56.57.58.59.60.61.62.63