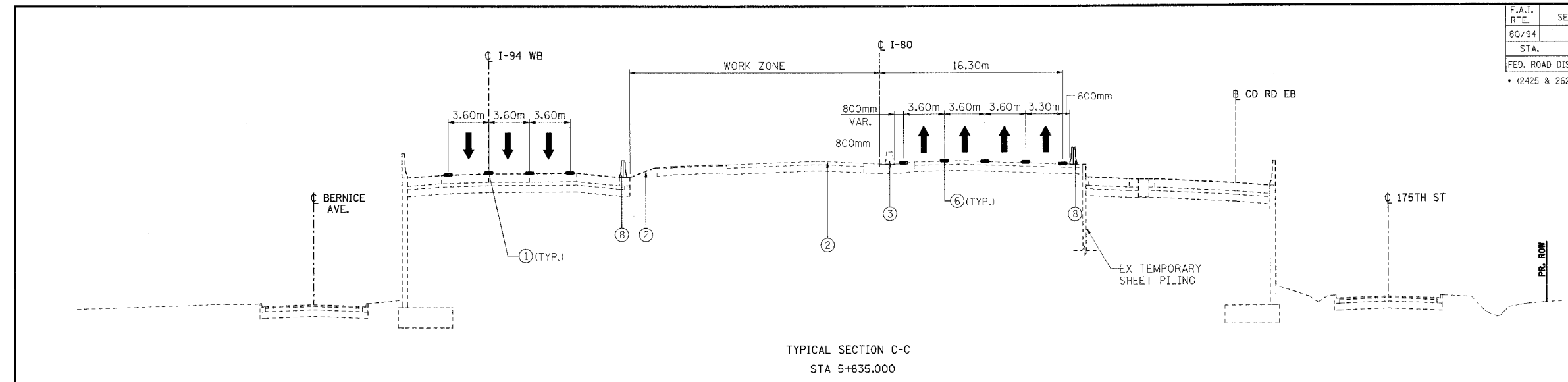
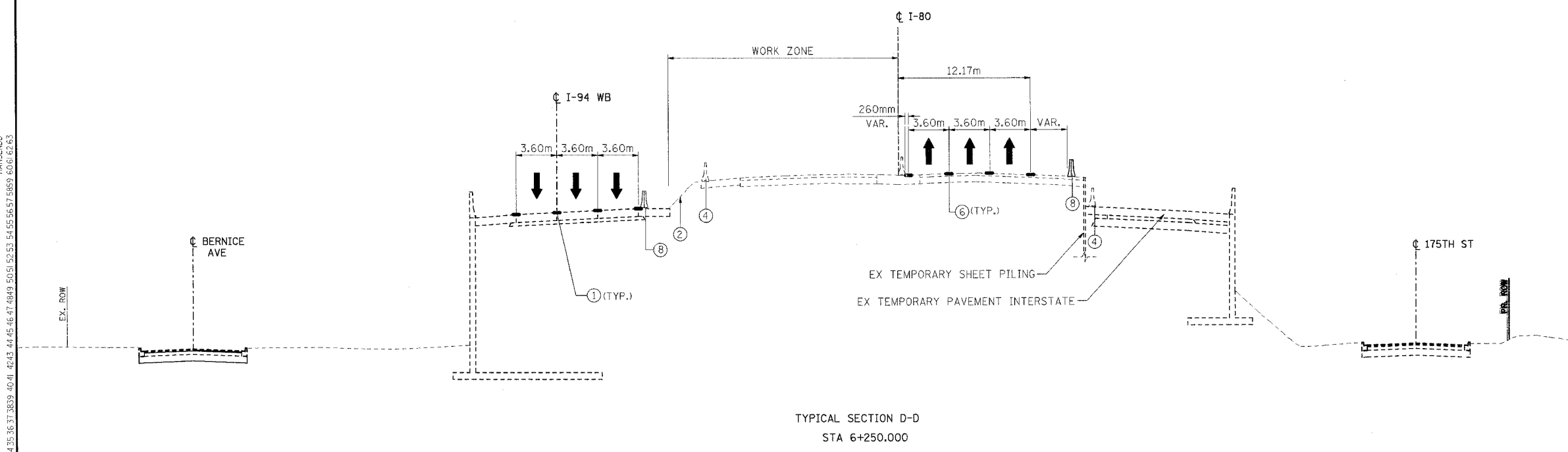


F.A.I. RTE.	SECTION	COUNTY	TOTAL SHEETS	SHEET NO.
80/94	*	COOK	631	144
STA.	TO STA.			
FED. ROAD DIST. NO.	ILLINOIS	FED. AID PROJECT		
* (2425 & 2626) R-2		CONTRACT NO. 62111		



TYPICAL SECTION C-C  
STA 5+835.000



TYPICAL SECTION D-D  
STA 6+250.000

- LEGEND**
- ① EXISTING PAVEMENT MARKING
  - ② EXISTING GROUND LINE
  - ③ EXISTING CONCRETE BARRIER
  - ④ EXISTING TEMPORARY CONCRETE BARRIER
  - ⑤ DRUM OR TYPE II BARRICADES WITH STEADY BURN LIGHTS
  - ⑥ TEMPORARY PAVEMENT MARKINGS (SEE PLANS FOR DETAILS AND PAY ITEM)
  - ⑦ TEMPORARY PAVEMENT (INTERSTATE)
  - ⑧ TEMPORARY CONCRETE BARRIER (SEE PLANS FOR PAY ITEM)
  - ⑨ PROPOSED SUBGRADE
- ↑ TRAFFIC FLOW ARROW
- \* EXISTING FROM A PREVIOUS STAGE OR CONTRACT  
 VAR. - INDICATES THAT THIS DIMENSION VARIES IN THE VICINITY OF THE INDICATED TYPICAL SECTION

..\889002A.DGN, ..\889002A.DGN, ..\889002A.DGN, ..\MT15552A.DGN  
 9-15-2005, 16:21:39  
 2 3 4 5 6 7 8 9 10 11 12 14 15 16 17 18 19 20 21 22 23 24 25 26 27 28 29 30 31 32 33 34 35 36 37 38 39 40 41 42 43 44 45 46 47 48 49 50 51 52 53 54 55 56 57 58 59 60 61 62 63  
 HANSEN

REVISIONS	
NAME	DATE

ILLINOIS DEPARTMENT OF TRANSPORTATION  
 F.A.I. ROUTE 80/94 (KINGERY EXPRESSWAY)  
 EB & WB INSIDE LANES (MAINLINE) CONSTRUCTION  
 COOK COUNTY

**MAINTENANCE OF TRAFFIC  
 FAI 80/94 - TYPICAL SECTIONS  
 PHASE III, STAGE I**

SCALE: NONE  
 DATE: 9/13/05

DRAWN BY: OP  
 CHECKED BY: JP

**TENG**  
 TENG & ASSOCIATES, INC.  
 ENGINEERS/ARCHITECTS/PLANNERS  
 CHICAGO, ILLINOIS