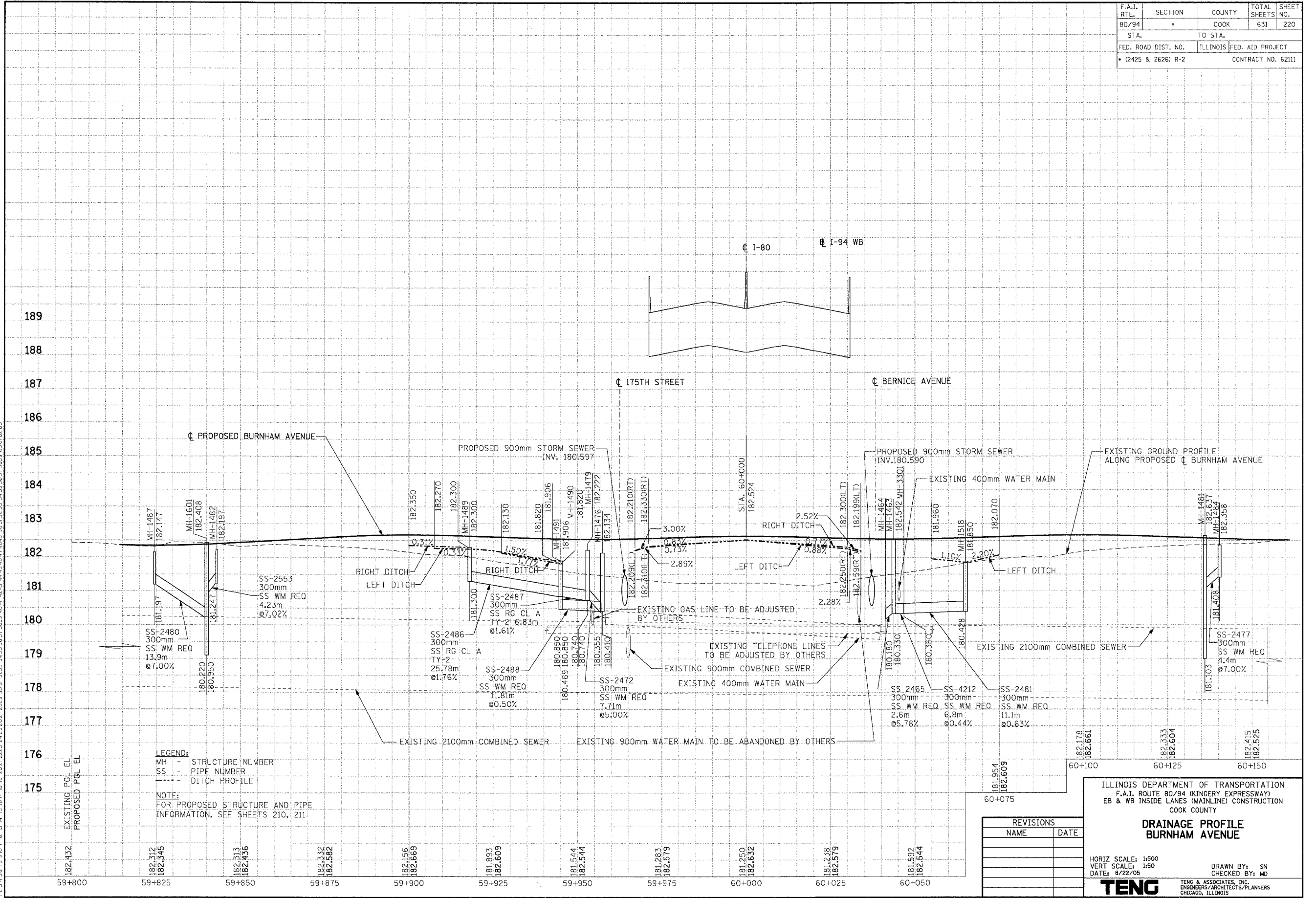


F.A.I. RTE. 80/94	SECTION *	COUNTY COOK	TOTAL SHEETS 631	SHEET NO. 220
STA.		TO STA.		
FED. ROAD DIST. NO.		ILLINOIS	FED. AID PROJECT	
• (2425 & 2626) R-2		CONTRACT NO. 62111		

PRELIMINARY SURVEY	BY	DATE
SURVEY PLOTTED		
NOTE BOOK TEMPLATE		
AREAS CHECKED		
NO.		

ORIGINAL SURVEY	BY	DATE
SURVEY PLOTTED		
NOTE BOOK TEMPLATE		
AREAS CHECKED		
NO.		

BALZEKJ
 59+800 59+825 59+850 59+875 59+900 59+925 59+950 59+975 60+000 60+025 60+050
 182.312 182.345 182.313 182.436 182.332 182.582 182.156 182.669 181.893 182.609 181.544 182.544 181.283 182.579 181.250 182.632 181.238 182.579 181.592 182.544 181.178 182.661 182.333 182.604 182.415 182.525 181.954 182.609 182.178 182.661 182.333 182.604 182.415 182.525



LEGEND:
 MH - STRUCTURE NUMBER
 SS - PIPE NUMBER
 --- DITCH PROFILE
NOTE:
 FOR PROPOSED STRUCTURE AND PIPE INFORMATION, SEE SHEETS 210, 211

REVISIONS	
NAME	DATE

ILLINOIS DEPARTMENT OF TRANSPORTATION
 F.A.I. ROUTE 80/94 (KINGERY EXPRESSWAY)
 EB & WB INSIDE LANES (MAINLINE) CONSTRUCTION
 COOK COUNTY
**DRAINAGE PROFILE
 BURNHAM AVENUE**
 HORIZ SCALE: 1:500
 VERT SCALE: 1:50
 DATE: 8/22/05
 DRAWN BY: SN
 CHECKED BY: MD
TENG
 TENG & ASSOCIATES, INC.
 ENGINEERS/ARCHITECTS/PLANNERS
 CHICAGO, ILLINOIS