

F.A.I. RTE.	SECTION	COUNTY	TOTAL SHEETS	SHEET NO.
80/94	*	COOK	631	223
STA.		TO STA.		
FED. ROAD DIST. NO.		ILLINOIS FED. AID PROJECT		
* (2425 & 2626) R-2		CONTRACT NO. 62111		

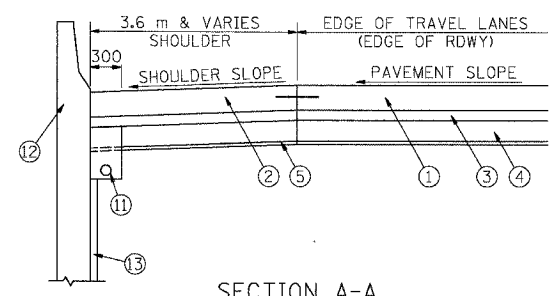
LEGEND

- ① PROPOSED PAVEMENT
- ② PORTLAND CEMENT CONCRETE SHOULDERS
- ③ STABILIZED SUBBASE - 150 mm
- ④ SUB-BASE GRANULAR MATERIAL, TYPE B - 300 mm
- ⑤ GEOTECHNICAL FABRIC FOR GROUND STABILIZATION
- ⑥ NOT USED
- ⑦ CONCRETE BARRIER, SINGLE FACE
- ⑧ CONCRETE BARRIER, DOUBLE FACE
- ⑨ CONCRETE BARRIER BASE
- ⑩ BARRIER BASE OPEN JOINT (P/J)
- ⑪ PIPE UNDERDRAINS - 150 mm
- ⑫ RETAINING WALL
- ⑬ GEOCOMPOSITE WALL DRAIN
- ⑭ CONCRETE HEADWALLS FOR PIPE DRAINS (STD. 601101)
- ⑮ PIPE UNDERDRAINS (SPECIAL)
- ⑯ AGGREGATE SHOULDERS, TYPE B

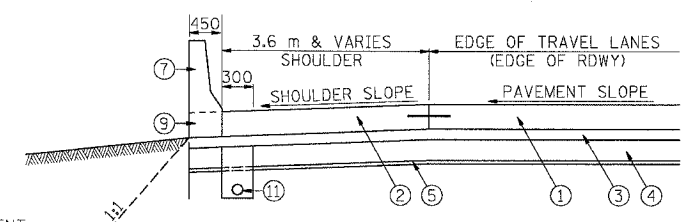
LEGEND

- (COST INCLUDED IN PIPE UNDERDRAINS)
- ⑩A FABRIC ENVELOPE FOR PIPE UNDERDRAINS
 - ⑩A POROUS GRANULAR BACKFILL (CA-16)

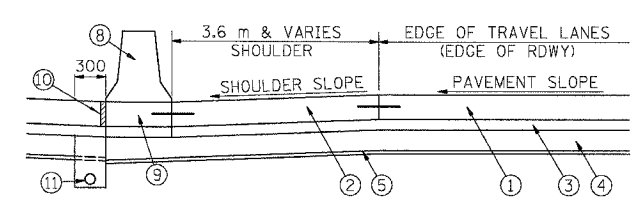
- NOTE 1: NO ADDITIONAL COMPENSATION WILL BE ALLOWED FOR TRENCHING THROUGH AGGREGATE SUBGRADE, POROUS GRANULAR EMBANKMENT, SUBGRADE OR GEOTECHNICAL FABRIC FOR GROUND STABILIZATION.
- NOTE 2: DRAINAGE MATS WILL NOT BE ALLOWED.
- NOTE 3: SEE TYPICAL SECTIONS AND ROADWAY PLANS FOR PAVEMENT AND SHOULDER TYPES, WIDTHS AND CROSS-SLOPES.
- NOTE 4: SEE CONCRETE BARRIER DETAILS FOR REQUIRED TIE BARS OR REINFORCING BARS AND OTHER DETAILS.
- NOTE 5: ADDITIONAL SUB-BASE GRANULAR MATERIAL UNDER THE CONCRETE BARRIER WILL NOT BE PAID FOR SEPARATELY BUT WILL BE INCLUDED IN THE SQUARE METER COST OF SUB-BASE GRANULAR MATERIAL, TYPE B.
- NOTE 6: ALL PIPE FITTINGS NECESSARY FOR THE INSTALLATION OF THE UNDERDRAIN SYSTEM WILL NOT BE PAID FOR SEPARATELY BUT WILL BE INCLUDED IN THE METER COST OF PIPE UNDERDRAINS, 150.



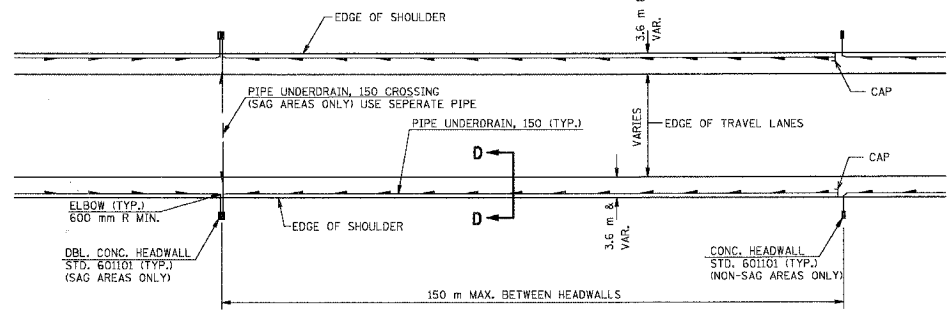
SECTION A-A
SHOWING RETAINING WALL



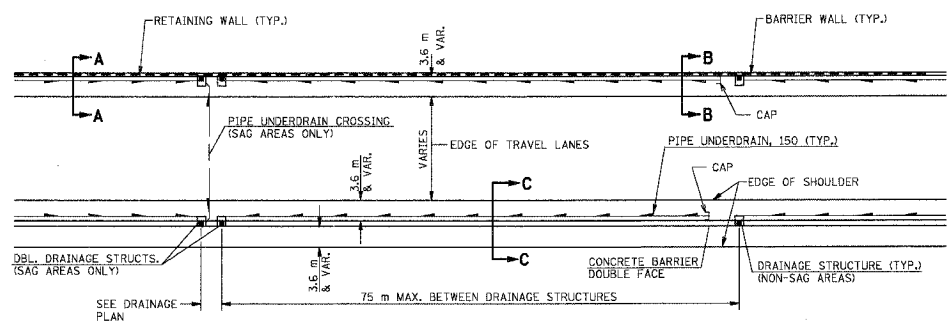
SECTION B-B
SHOWING CONCRETE BARRIER, SINGLE FACE



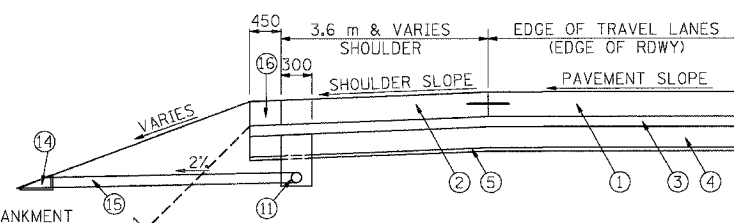
SECTION C-C
SHOWING CONCRETE BARRIER, DOUBLE FACE



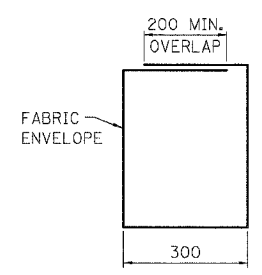
PROPOSED PLAN VIEW WITH OPEN DRAINAGE SYSTEM



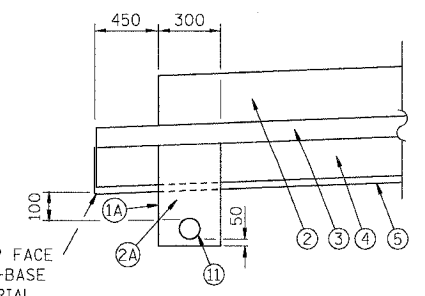
PROPOSED PLAN VIEW WITH CLOSED DRAINAGE SYSTEM



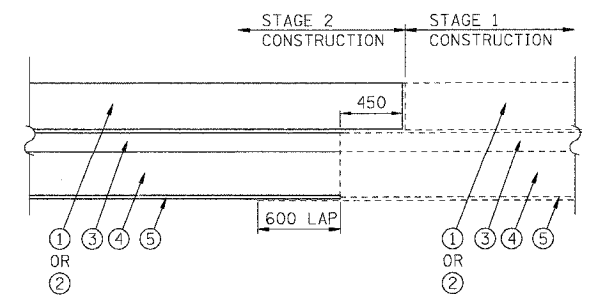
SECTION D-D
SHOWING OPEN DRAINAGE



FABRIC ENVELOPE
DETAIL



UNDERDRAIN TRENCH
DETAIL



DETAIL FOR STAGE CONSTRUCTION OF THE SUBGRADE
(FOR 30 YEAR EXTENDED LIFE PAVEMENT)

LEGEND

- STAGE 1
- STAGE 2

PIPE UNDERDRAIN AND SHOULDER DET.DWG
 8-18-2005, 10:42:02
 T:\PROJECTS\158195\158195\CIVIL\DWG\158195\158195.DWG
 12.3.4.56.7.8.9.10.11.12.13.14.15.16.17.18.19.20.21.22.23.24.25.26.27.28.29.30.31.32.33.34.35.36.37.38.39.40.41.42.43.44.45.46.47.48.49.50.51.52.53.54.55.56.57.58.59.60.61.62.63.

REVISIONS	
NAME	DATE
ACE	06/04
ACE	6/9/04
ACE	4/20/05

ALL DIMENSIONS IN MILLIMETERS UNLESS OTHERWISE SHOWN.

ILLINOIS DEPARTMENT OF TRANSPORTATION
F.A.I. ROUTE 80/94 (KINGERY EXPRESSWAY)

PIPE UNDERDRAIN AND SUBGRADE DETAILS FOR OPEN AND CLOSED DRAINAGE SYSTEMS

SCALE NONE
 DATE 02/04

DRAWN BY ACE/CAD
 CHECKED BY

AMERICAN
 CONSULTING ENGINEERS