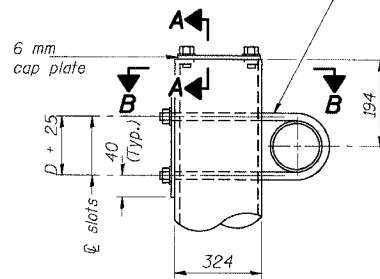
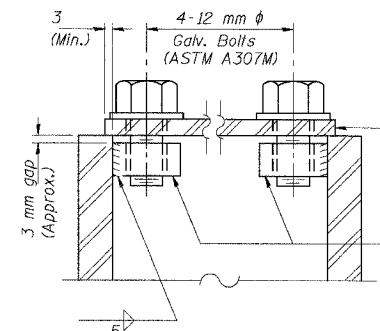


F.A.I. RTE.	SECTION	COUNTY	TOTAL SHEETS	SHEET NO.
80/94		COOK	631	321
STA.	TO STA.			
FED. ROAD DIST. NO.	ILLINOIS	FED. AID PROJECT		
	(2425 & 2626) R-2	CONTRACT NO. 62111		

19 mm  $\phi$  stainless steel U-bolt  
Provide two washers and two hexagon locknuts. (4)  
21 mm x 51 mm slots on  $\phi$  DN 300 pipe.  
(4 slots required per pipe)

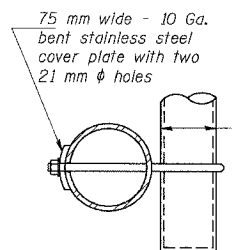


**DETAIL A**

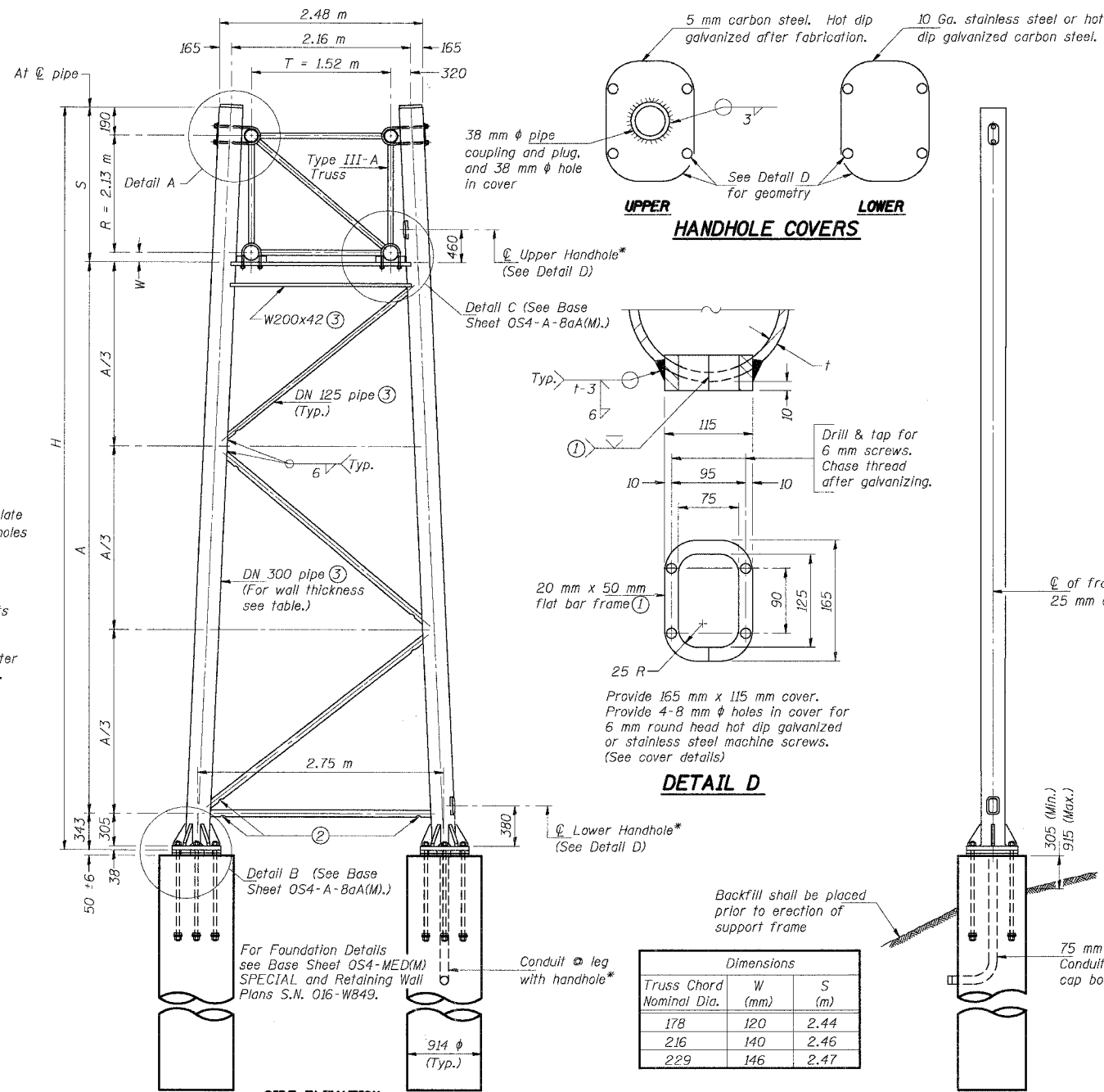


**SECTION A-A**

As an alternate to bolts, may use galvanized drive-fit caps installed after galvanizing frame.

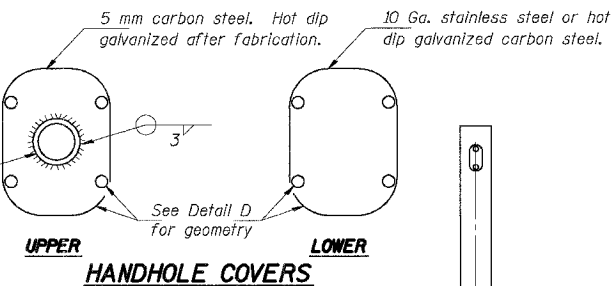


**SECTION B-B**

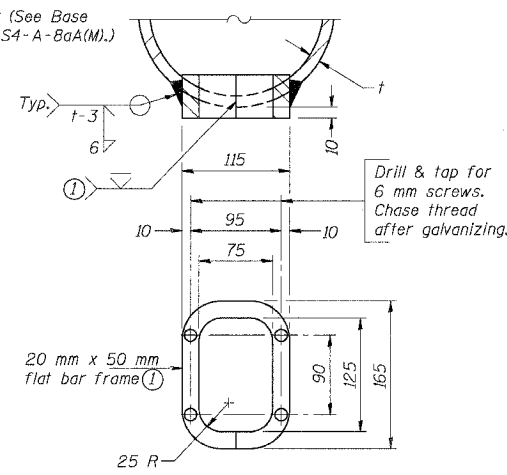


**SIDE ELEVATION**

\* Provide Handholes in east leg of Right Support Frame.



**HANDHOLE COVERS**



**DETAIL D**

Provide 165 mm x 115 mm cover. Provide 4-8 mm  $\phi$  holes in cover for 6 mm round head hot dip galvanized or stainless steel machine screws. (See cover details)

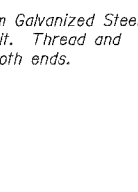
Dimensions		
Truss Chord Nominal Dia.	W (mm)	S (m)
178	120	2.44
216	140	2.46
229	146	2.47

**TRUSS SUPPORT DETAILS**  
(DN 300 Pipe-Type III-A Truss)

Support Design Loads: See Base Sheet OS-A-1(M) for design and loading criteria.  
Load combinations checked include deadload plus:  
a) 100% wind normal to sign, 20% parallel to sign  
b) 60% wind normal to sign, 30% parallel to sign

- In lieu of fabricated handhole frame as shown, may cut from 50 mm plate (rolling direction vertical). All cut faces to be ground to ANSI Roughness of 12.7  $\mu$ m or less.
- Galvanizing vent holes of adequate size shall be provided on underside at each end of bracing pipes. Alternately, holes may be provided in wall of pipe column. All vent holes shall be drilled and de-burred. (Typ.)
- Steel pipe, plate, carbon steel handhole covers and rolled sections shall be hot dip galvanized after fabrication. Painting is not permitted. See Base Sheet OS-A-1(M).
- See General Notes for fasteners.
- Dimensions shown are based on selection criteria in the Sign Structures Manual. Nonstandard applications must have dimensions verified or amended as appropriate.

Structure Number	Station	Support		Pipe Wall Thickness	H (m)	A (m)
		Left	Right			
ISO161080L162.6	6+546.200	X		10	8.640	5.857
ISO161080L162.6	6+546.200		X	10	9.870	7.087



**END ELEVATION**

REVISIONS	
NAME	DATE

ILLINOIS DEPARTMENT OF TRANSPORTATION  
F.A.I. ROUTE 80/94 (KINGERY EXPRESSWAY)  
EB & WB INSIDE LANES (MAINLINE) CONSTRUCTION  
COOK COUNTY

**OVERHEAD SIGN STRUCTURES**  
**DN300 PIPE SUPPORT FRAME FOR**  
**TYPE III-A ALUMINUM TRUSS**

SCALE: DATE: 7/18/2005  
DRAWN BY: NK  
CHECKED BY: VCP

**TENG**  
TENG & ASSOCIATES, INC.  
ENGINEERS/ARCHITECTS/PLANNERS  
CHICAGO, ILLINOIS

.MS17R02A.DGN, .A899002A.DGN  
 7-12-2005, 10:23:49  
 12 3 4 56 78 9 10 11 12 13 14 15 16 17 18 19 20 21 22 23 24 25 26 27 28 29 30 31 32 33 34 35 36 37 38 39 40 41 42 43 44 45 46 47 48 49 50 51 52 53 54 55 56 57 58 59 60 61 62 63