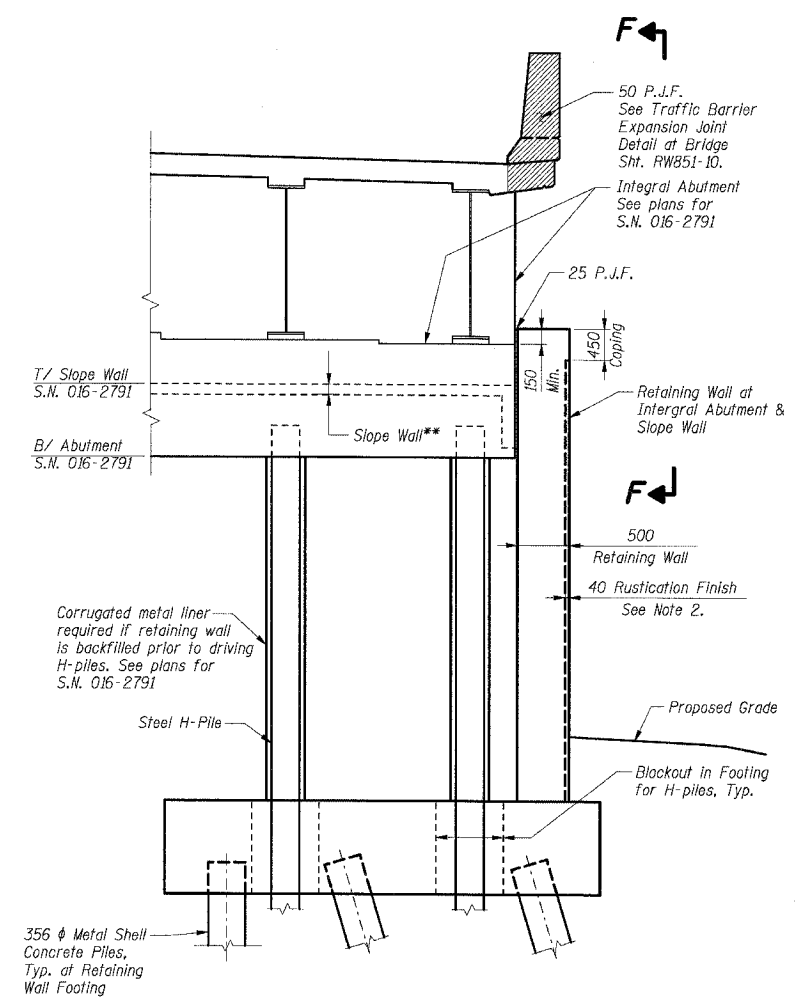
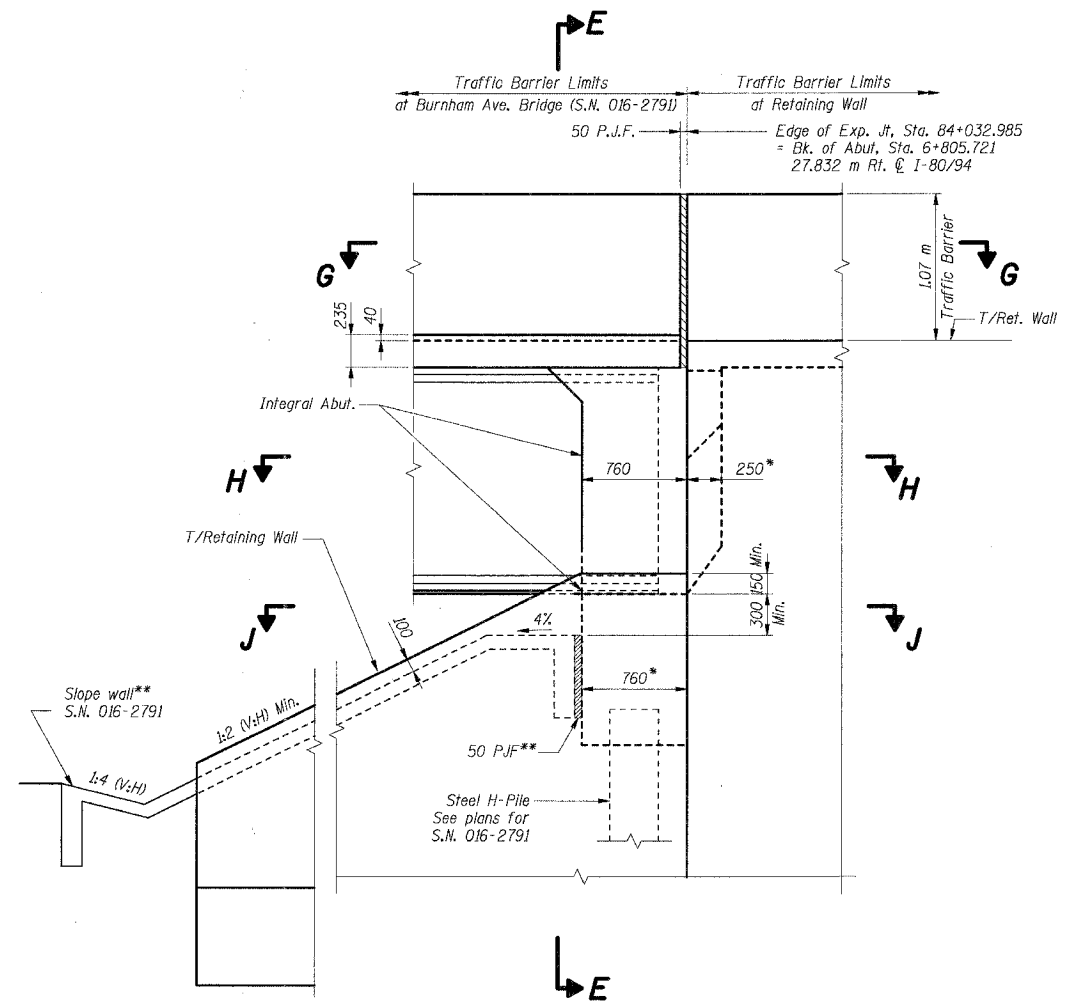


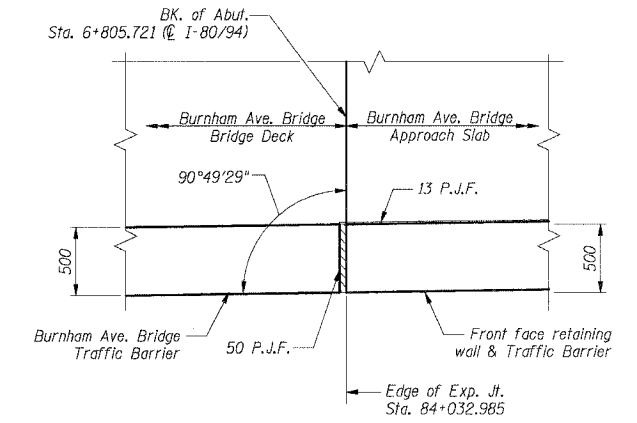
F.A.I. RTE.	SECTION	COUNTY	TOTAL SHEETS	SHEET NO.
80/94		COOK	631	367
STA.	TO STA.			
FED. ROAD DIST. NO.	ILLINOIS	FED. AID PROJECT		
(2425 & 2626) R-2		CONTRACT NO. 62111		



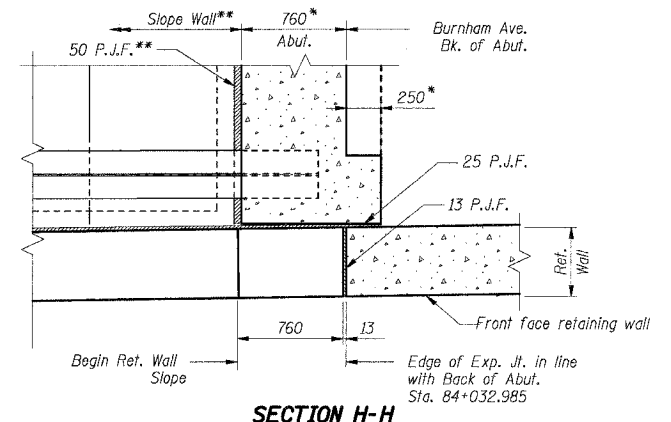
SECTION E-E
Work with Sht. RW851-3.



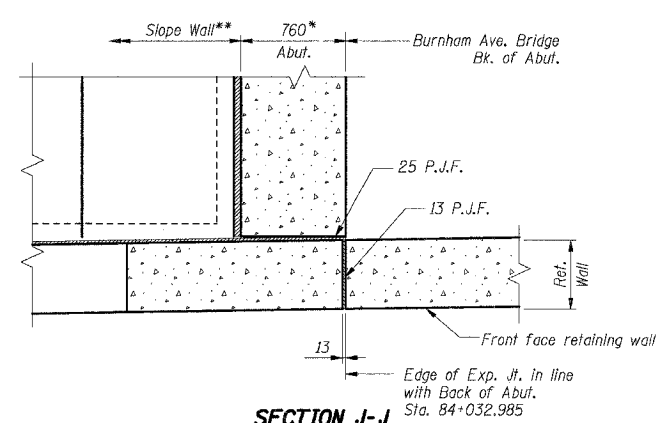
ELEVATION F-F
LOOKING NORTH



PLAN DETAIL G-G



SECTION H-H



SECTION J-J

- Notes:
- All dimensions are in millimeters (mm) except as noted.
 - For Rustication Finish and joint details see Sht. RW851-12.
 - * denotes See plans for S.N. 016-2791 for dimensions.
 - ** denotes: See Bridge Plans S.N. 016-2791

SHT. RW851-9 OF 14

REVISIONS	
NAME	DATE

ILLINOIS DEPARTMENT OF TRANSPORTATION
F.A.I. ROUTE 80/94 (KINGERY EXPRESSWAY)
EB & WB INSIDE LANES (MAINLINE) CONSTRUCTION
RETAINING WALL - STRUCTURE NO. 016-W851
SECTION (2425 & 2626) R-2
COOK COUNTY

WALL SECTIONS & DETAILS III

DATE: 7/18/2005
DRAWN BY: LG
CHECKED BY: MJK

TENG
TENG & ASSOCIATES, INC.
ENGINEERS/ARCHITECTS/PLANNERS
CHICAGO, ILLINOIS

\MB99001A.DGN, \RS123242ADDN
 7-12-2005, 10:25:54
 T:\DOCUMENT\3375\STRUCT\016\RS123242ADDN
 12 3 4 56 78 910 11 12 13 14 15 16 17 18 19 20 21 22 23 24 25 26 27 28 29 30 31 32 33 34 35 36 37 38 39 40 41 42 43 44 45 46 47 48 49 50 51 52 53 54 55 56 57 58 59 60 61 62 63

