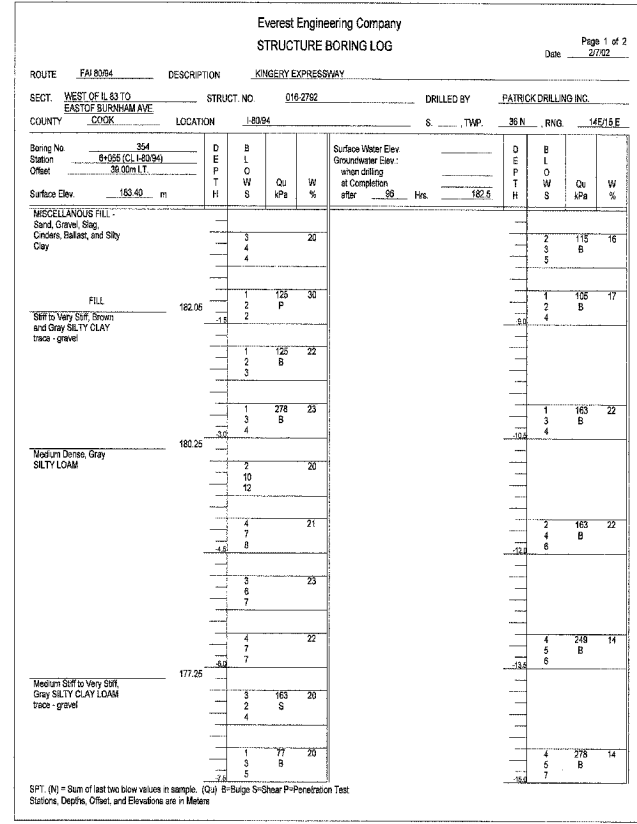
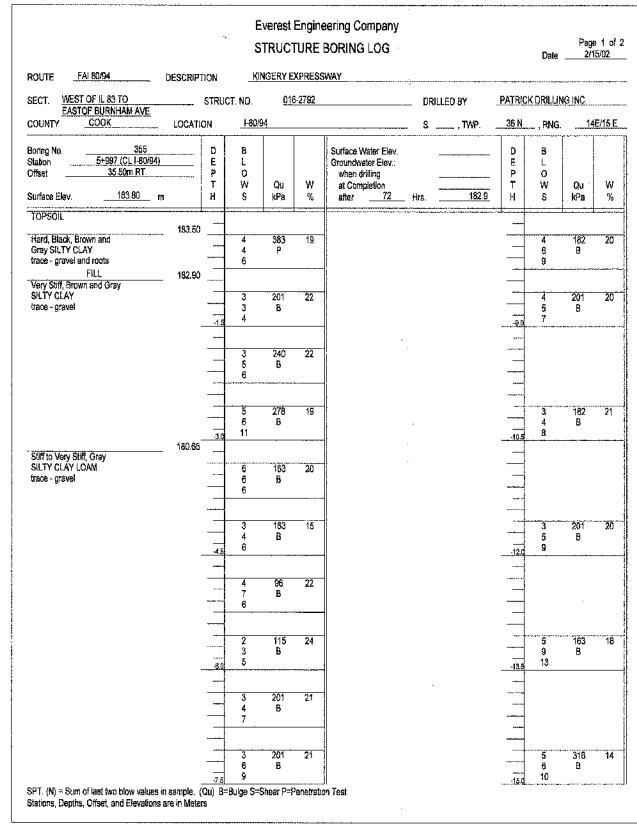


F.A.I. RTE.	SECTION	COUNTY	TOTAL SHEETS	SHEET NO.
80/94		COOK	631	441
STA.		TO STA.		
FED. ROAD DIST. NO.		ILLINOIS	FED. AID PROJECT	
* (2425 & 2626) R-2		CONTRACT NO. 62111		

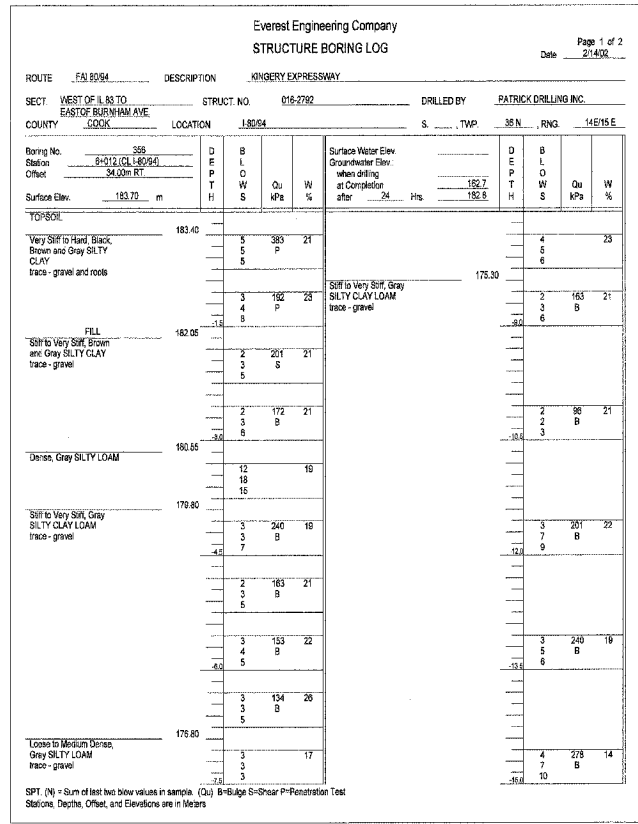
Boring No. 354, Page 1 of 2



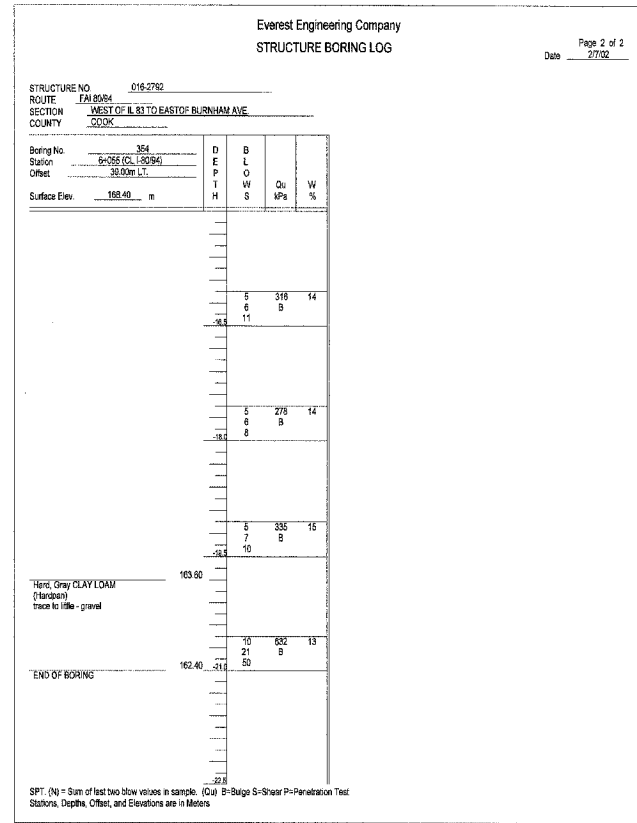
Boring No. 355, Page 1 of 2



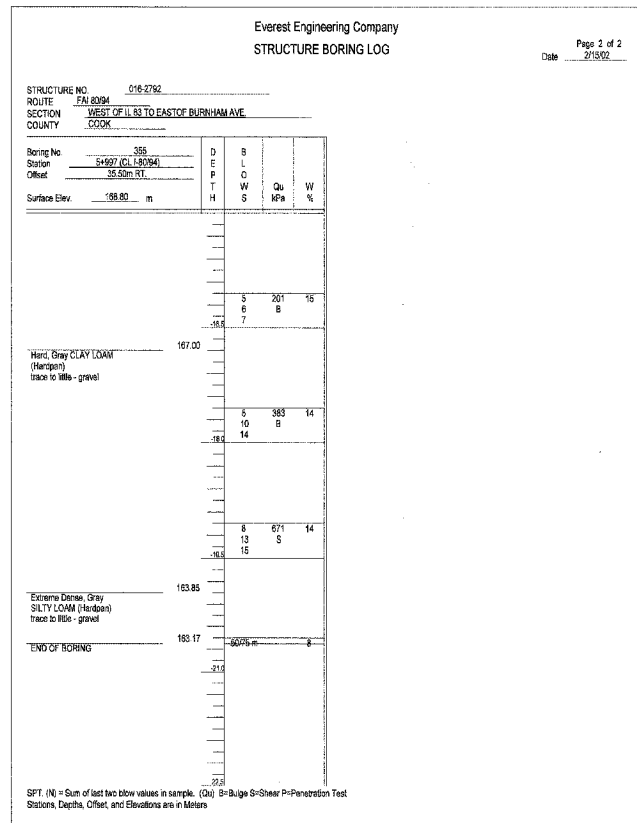
Boring No. 356, Page 1 of 2



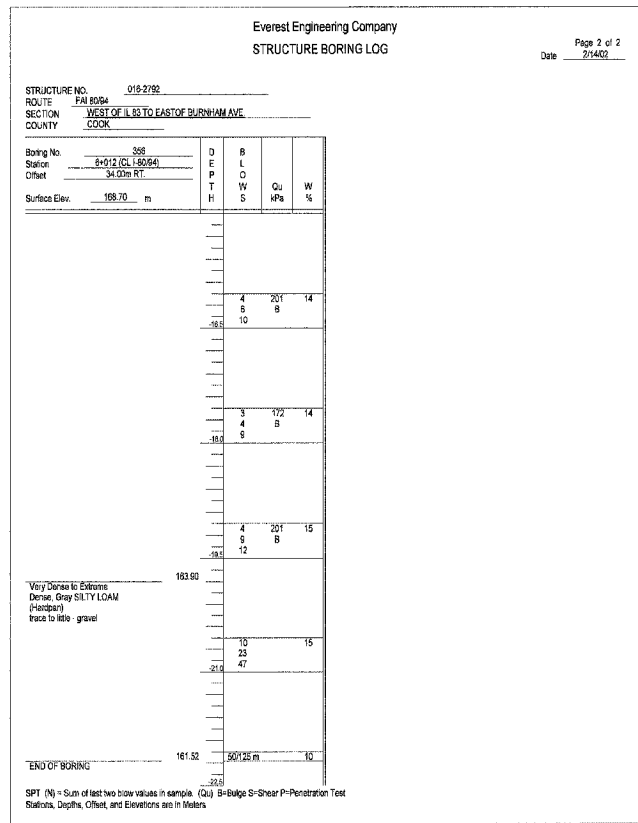
Boring No. 354, Page 2 of 2



Boring No. 355, Page 2 of 2



Boring No. 356, Page 2 of 2



\\MS9900\ALD\CON\1\6095932A.DWG
 T:\DOCUMENTS\3315\STRUCT\CON\3073022A.DWG
 1/2/2006 10:26:55
 1/23/06 10:19:10

SHT. RS-69 OF 70

REVISIONS	
NAME	DATE

ILLINOIS DEPARTMENT OF TRANSPORTATION
 F.A.I. ROUTE 80/94 (KINGERY EXPRESSWAY)
 EB & WB INSIDE LANES (MAINLINE) CONSTRUCTION
 I-80/94 OVER RAILROAD AVENUE
 STRUCTURE NO. 016-2792 STA. 6+025.000
 SECTION 1977-121-R
 COOK COUNTY

BORING LOGS - II

DATE: 7/18/2005
 DRAWN BY: LG
 CHECKED BY: MJK

TENG
 TENG & ASSOCIATES, INC.
 ENGINEERS/ARCHITECTS/PLANNERS
 CHICAGO, ILLINOIS