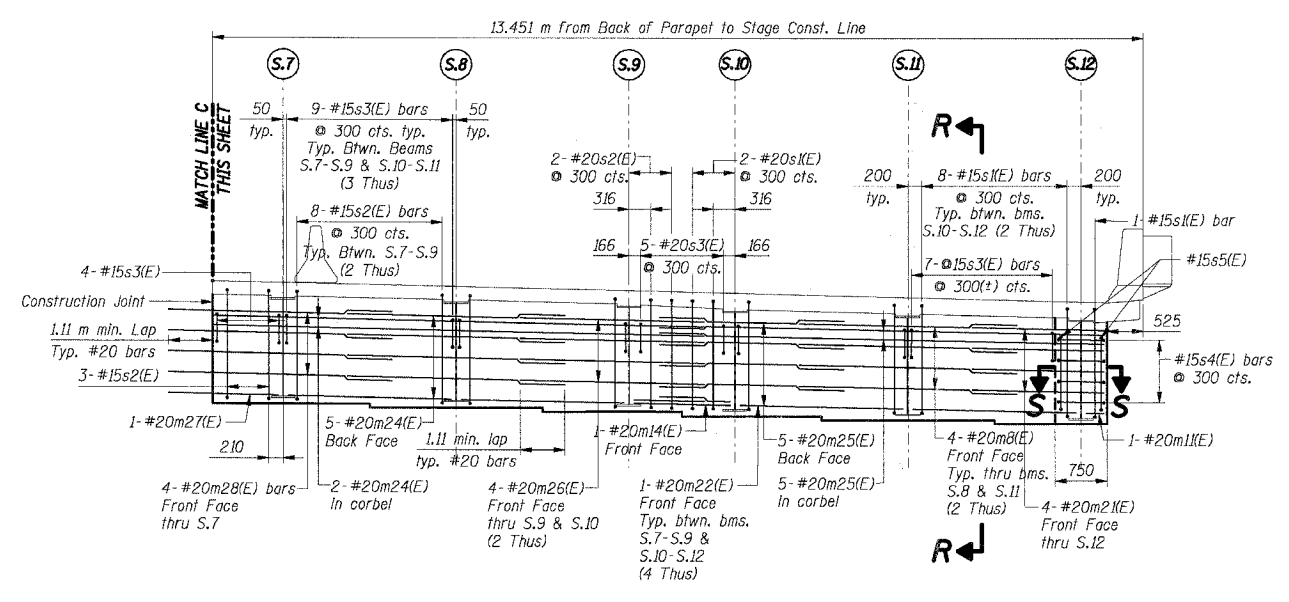
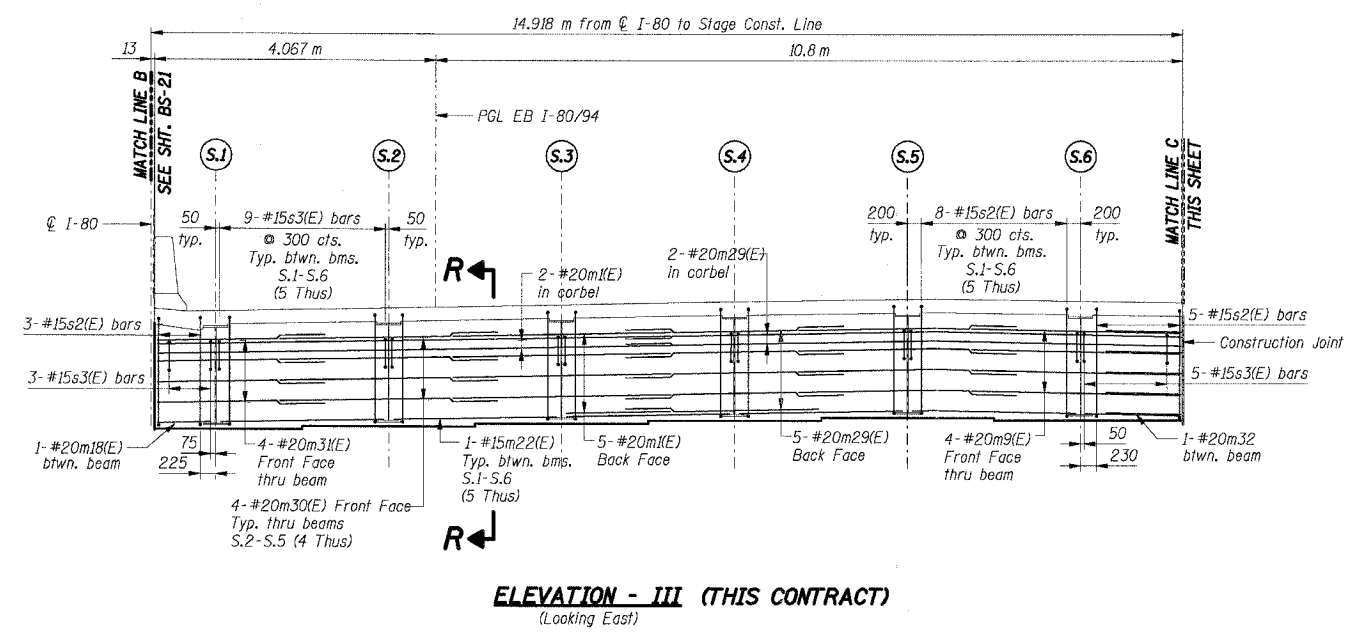
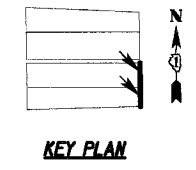


F.A.I. RTE.	SECTION	COUNTY	TOTAL SHEETS	SHEET NO.
80/94	*	COOK	631	464
STA.	TO STA.			
FED. ROAD DIST. NO.	ILLINOIS	FED. AID PROJECT		
* (2425 & 2626) R-2		CONTRACT NO. 62111		



- Notes:**
- All dimensions are in millimeters (mm) except as noted.
  - Reinforcement bars designated (E) shall be epoxy coated.
  - Bars indicated thus 74x10-#15 etc. Indicates 74 lines of bars with 10 lengths per line
  - For Section R-R, see Sht. BS-21.
  - For Section S-S, see Sht. BS-19.
  - For Reinforcement Bar List & Bill of Material, see Sht. BS-23.
  - Work this Sheet with Shts. BS-19 thru BS-21.
  - F.F. Denotes Front Face
  - B.F. Denotes Back Face.
  - All edges shall have a 20 mm chamfer unless noted otherwise.



**SHT. BS-22 OF 60**

REVISIONS	
NAME	DATE

ILLINOIS DEPARTMENT OF TRANSPORTATION  
F.A.I. ROUTE 80/94 (KINGERY EXPRESSWAY)  
EB & WB INSIDE LANES (MAINLINE) CONSTRUCTION  
1-80/94 OVER BURNHAM AVENUE  
STRUCTURE NO. 016-2791 STA. 6+772.591  
SECTION 1977-121-R  
COOK COUNTY

**EAST INTEGRAL BACKWALL  
ELEVATIONS & SECTIONS - III & IV**

DATE: 7/18/2005

DRAWN BY: LAR  
CHECKED BY: MJK

**TENG**  
TENG & ASSOCIATES, INC.  
ENGINEERS/ARCHITECTS/PLANNERS  
CHICAGO, ILLINOIS

S:\990624.DGN, S:\990624.DGN, S:\990624.DGN, S:\990624.DGN, S:\990624.DGN  
 7-2-2005, 10:26:39  
 T:\DOCUMENT\99\990624.DGN, S:\990624.DGN, S:\990624.DGN, S:\990624.DGN, S:\990624.DGN  
 2-3-2005 18:10:11 12 13 14 15 16 17 18 19 20 21 22 23 24 25 26 27 28 29 30 31 32 33 34 35 36 37 38 39 40 41 42 43 44 45 46 47 48 49 50 51 52 53 54 55 56 57 58 59 60 61 62 63