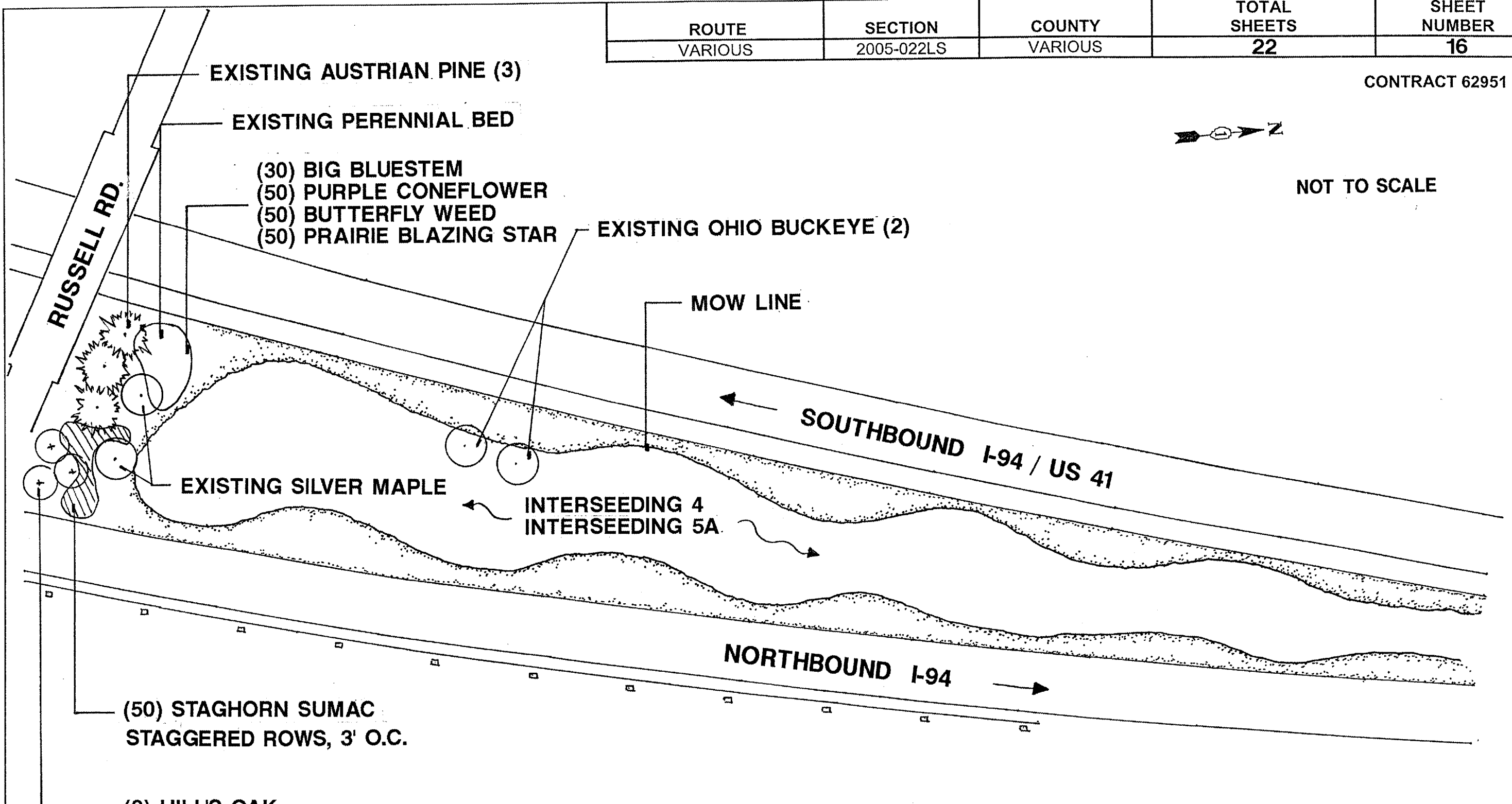


ROUTE	SECTION	COUNTY	TOTAL SHEETS	SHEET NUMBER
VARIOUS	2005-022LS	VARIOUS	22	16

CONTRACT 62951



NOT TO SCALE



NOTE

ON THE BRIDGE CONE SOUTH OF RUSSELL RD, (3) HILL'S OAK & (50) STAGHORN SUMAC WILL BE PLANTED AND SPACED ACCORDINGLY (AS LISTED ON THIS PLAN). ON THE BRIDGE CONE NORTH OF RUSSELL RD., PERENNIALS WILL BE SPACED 12" IN THE EXISTING PERENNIAL BED. PLEASE NOTIFY MELISSA DEL ROSARIO 72 HOURS PRIOR TO PLANTING AT (847) 705-4171 FOR LAYOUT.

ILLINOIS DEPARTMENT OF TRANSPORTATION
 LANDSCAPE REPAIR LOCATION AND
 LAYOUT PLAN