

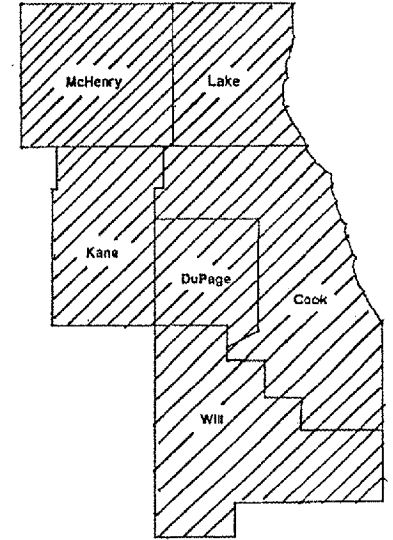
ROUTE	SECTION	COUNTY	TOTAL SHEETS	SHEET NUMBER
VARIOUS	2005-022LS	VARIOUS	22	1

CONTRACT 62951

STATE OF ILLINOIS
DEPARTMENT OF TRANSPORTATION
DIVISION OF HIGHWAYS
DISTRICT ONE

PROPOSED HIGHWAY PLANS

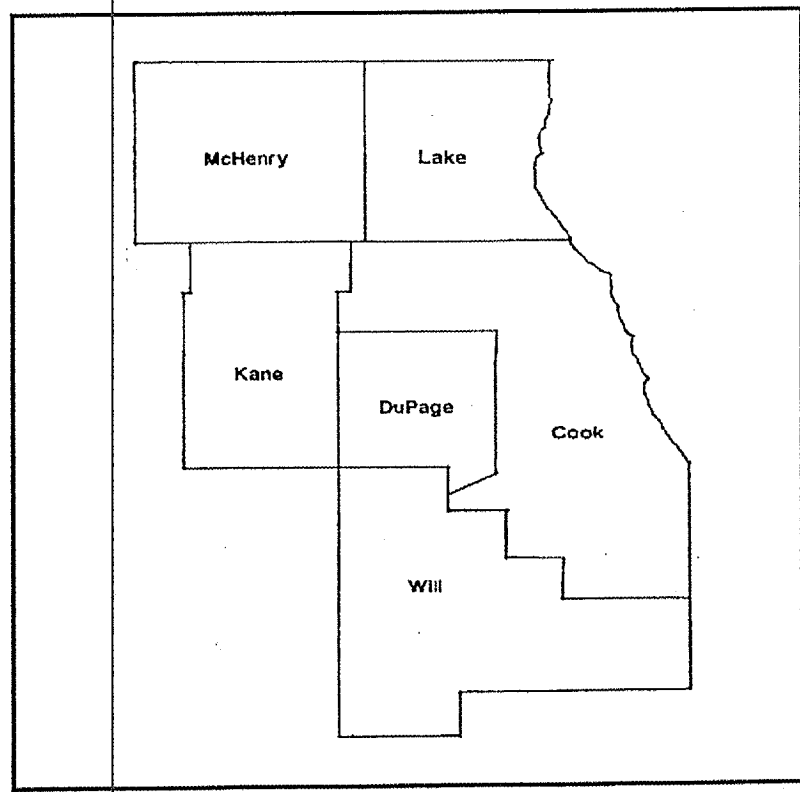
ROUTE: VARIOUS
SECTION 2005-022LS
LANDSCAPE REPAIR AND RENOVATION
VARIOUS COUNTIES
C-91-204-05



LOCATION OF IMPROVEMENT INDICATED THUS: 

FOR INDEX OF SHEETS SEE PAGE 2

IMPROVEMENT IS IN VARIOUS
LOCATIONS WITHIN DISTRICT
ONE



STATE OF ILLINOIS
DEPARTMENT OF TRANSPORTATION
DIVISION OF HIGHWAYS

SUBMITTED: Oct. 28 2005
Diane M. O'Keefe
DISTRICT ENGINEER

December 9 2005
Mike Hine (R)
ENGINEER OF DESIGN AND ENVIRONMENT

December 9 2005
Eric Hain (R)
DEPUTY DIRECTOR, DIVISION OF HIGHWAYS

**PRINTED BY THE AUTHORITY
OF THE STATE OF ILLINOIS**

J.U.L.I.E.: JOINT UTILITY LOCATION
INFORMATION FOR EXCAVATION
(800) 892-0123

DISTRICT ONE BUREAU OF MAINTENANCE: J. STUMPNER
MAINTENANCE LANDSCAPE DESIGNER: R. WANNER / M. DEL ROSARIO (847) 705-4171

CONTRACT 62951

ROUTE	SECTION	COUNTY	TOTAL SHEETS	SHEET NUMBER
VARIOUS	2005-022LS	VARIOUS	22	2

CONTRACT 62951

INDEX OF SHEETS

STATE STANDARDS

1	TITLE SHEET	701001-01	701006-02
2	INDEX OF SHEETS, STATE STANDARDS AND GENERAL NOTES	701101-01	701311-02
3-4	SUMMARY OF QUANTITIES	702001-05	701400-02
5	SAMPLE WORK ORDER		701406-04
6	LOCATION SUMMARY		701106-01
7-21	LAYOUT PLAN SHEETS		
22	TC 17 TRAFFIC CONTROL DETAILS FOR FREEWAY SHOULDER CLOSURES PARTIAL RAMP CLOSURES		

GENERAL NOTES

FOR ARTERIALS THE CONTRACTOR SHALL CONTACT THE DISTRICT ONE TRAFFIC CONTROL SUPERVISOR AT (847) 705-4470 A MINIMUM OF 72 HOURS IN ADVANCE OF BEGINNING WORK.

BEFORE STARTING ANY EXCAVATION THE CONTRACTOR SHALL CALL THE STATE ELECTRICAL MAINTENANCE CONTRACTOR AT (773) 287-7600, EXTENSION 601, FOR FIELD LOCATIONS OF BURIED CABLE.

THE COST OF REMOVING AND DISPOSING DAMAGED TREES IN THIS CONTRACT SHALL BE INCLUDED IN THE CONTRACT UNIT PRICES FOR THE REPLACEMENT TREES.

ILLINOIS DEPARTMENT OF TRANSPORTATION

LANDSCAPE REPAIR
INDEX OF SHEETS
GENERAL NOTES
STATE STANDARDS

ROUTE	SECTION	COUNTY	TOTAL SHEETS	SHEET NUMBER
VARIOUS	2005-022LS	VARIOUS	22	3

SUMMARY OF QUANTITIES

CONTRACT 62951

PAY ITEM	DESCRIPTION	UNIT	MCHD FUND	CONTRACT MAINT FUND	URBAN Y003 TOTAL
C2010263	SHRUB, SPIREA JAPONICA MAGIC CARPET (MAGIC CARPET JAPANESE SPIREA) 3 GALLON	EACH	0	25	25
C2004440	SHRUB, LONICERA XYLOSTEUM 'EMERALD MOUND,' (EMERALD MOUND HONEYSUCKLE), 2' HEIGHT, BALLED AND BURLAPPED	EACH	0	50	50
C2607000	SHRUB, ROSA RADSUN, (CAREFREE SUNSHINE ROSE), 24" HEIGHT, CONTAINER	EACH	0	100	100
21101615	TOPSOIL FURNISH AND PLACE 4"	SQ YD	4840	3020	7860
25000210	SEEDING, CLASS 2A	ACRE	0.75	0.75	1.5
25000400	NITROGEN FERTILIZER NUTRIENT	POUND	90	45	135
25000500	PHOSPHORUS FERTILIZER NUTRIENT	POUND	90	45	135
25000600	POTASSIUM FERTILIZER NUTRIENT	POUND	90	45	135
25003310	INTERSEEDING, CLASS 4	ACRE	0	3	3
25003322	INTERSEEDING, CLASS 5A	ACRE	0	3	3
25100630	EROSION CONTROL BLANKET	SQ YD	4840	2630	7460
25200110	SODDING, SALT TOLERANT	SQ YD	300	300	600
25200200	SUPPLEMENTAL WATERING	UNIT	0.5	10	10.5
A2000114	TREE, ACER X FREEMANII AUTUMN BLAZE (AUTUMN BLAZE FREEMAN MAPLE), 1 3/4" CALIPER, BALLED AND BURLAPPED	EACH	0	32	32
A2002564	TREE, CARPINUS CAROLINIANA (AMERICAN HORNBEAM), 5' HEIGHT, SHRUB FORM, BALLED AND BURLAPPED	EACH	0	10	10
A2004814	TREE, GLEDITSIA TRIACANTHOS INERMIS SKYLINE (SKYLINE THORNLESS COMMON HONEYLOCUST), 1 3/4" CALIPER, BALLED AND BURLAPPED	EACH	0	20	20
A2005014	TREE, GYMNOCLADUS DIOICUS (KENTUCKY COFFETREE), 1 3/4" CALIPER, BALLED AND BURLAPPED	EACH	1	93	94
A2006514	TREE, QUERCUS BICOLOR (SWAMP WHITE OAK), 1 3/4" CALIPER, BALLED AND BURLAPPED	EACH	0	9	9
A2006714	TREE, QUERCUS MACROCARPA (BUR OAK), 1 3/4" CALIPER, BALLED AND BURLAPPED	EACH	0	41	41
A2016614	TREE, QUERCUS ELLIPSOIDALIS (HILL'S OAK), 1 3/4" CALIPER, BALLED AND BURLAPPED	EACH	7	6	13
B2001664	TREE, CRATAEGUS CRUSGALLI INERMIS (THORNLESS COCKSPUR HAWTHORN), 5' HEIGHT, SHRUB FORM, BALLED AND BURLAPPED	EACH	0	19	19
B2002614	TREE, MALUS ADAMS (ADAMS CRABAPPLE), 1 3/4" CALIPER, TREE FORM, BALLED AND BURLAPPED	EACH	0	7	7

ILLINOIS DEPARTMENT OF TRANSPORTATION

SUMMARY OF QUANTITIES

ROUTE	SECTION	COUNTY	TOTAL SHEETS	SHEET NUMBER
VARIOUS	2005-022LS	VARIOUS	22	4

SUMMARY OF QUANTITIES

CONTRACT 62951

PAY ITEM	DESCRIPTION	UNIT	MCHD FUND	CONTRACT MAINT FUND	URBAN Y083 TOTAL
B2006364	TREE, SYRINGA RETICULATA IVORY SILK (IVORY SILK JAPANESE TREE LILAC), 5' HEIGHT, CLUMP FORM, BALLED AND BURLAPPED	EACH	0	21	21
C2006136	SHRUB, RHUS TYPHINA LACININATA (CUTLEAF STAGHORN SUMAC), 3' HEIGHT, BALLED AND BURLAPPED	EACH	8	160	168
C2007224	SHRUB, ROSA KNOCKOUT (KNOCKOUT ROSE), 24" HEIGHT, CONTAINER	EACH	0	106	106
C2011024	SHRUB, SYRINGA PATULA MISS KIM (MISS KIM MANCHURIAN LILAC), 2' HEIGHT, BALLED AND BURLAPPED	EACH	0	12	12
D2002160	EVERGREEN, PICEA PUNGENS (COLORADO SPRUCE), 5' HEIGHT, BALLED AND BURLAPPED	EACH	0	3	3
D2002760	EVERGREEN, PINUS NIGRA (AUSTRIAN PINE), 5' HEIGHT, BALLED AND BURLAPPED	EACH	0	7	7
D2C04018	EVERGREEN, YUCCA FILAMENTOSA (ADAM'S NEEDLE), 1 1/2" HEIGHT, CONTAINER	EACH	0	63	63
K0026700	TREE CARE	EACH	0	7	7
K0026850	PERENNIAL PLANT CARE	SQ YD	0	2390	2390
X0301407	PERENNIAL PLANTS, GALLON POT	EACH	0	5.64	5.64
X0322856	WEED CONTROL, NON-SELECTIVE AND NON-RESIDUAL	GALLON	0	6	6
X0322859	WEED CONTROL, PRE-EMERGENT GRANULAR HERBICIDE	POUND	0	200	200

ILLINOIS DEPARTMENT OF TRANSPORTATION

SUMMARY OF QUANTITIES

ROUTE	SECTION	COUNTY	TOTAL SHEETS	SHEET NUMBER
VARIOUS	2005-022LS	VARIOUS	22	5

CONTRACT 62951



Landscaping Repair and Rehabilitation Work Order

Contract #: _____ W.O. Number: _____
 Date: _____ Claim Number: _____
 Route: _____ Location: _____

Item	Unit	Quantity	Item	Unit	Quantity
IIA Seeding	Sq. Yd.				
Topsoil 4"	Sq. Yd.				
Sod	Sq. Yd.				
	Each				
	Each				
	Each				
	Each				

Special Instructions:

SAMPLE WORK ORDER

Prepared By: _____ Date repair work completed: _____

 Contractor Resident Engineer

Copy Distribution:
 White - Contractor
 Yellow - Pink - Resident Engineer
 Goldenrod - Inspector

ILLINOIS DEPARTMENT OF TRANSPORTATION

SAMPLE WORK ORDER

ROUTE	SECTION	COUNTY	TOTAL SHEETS	SHEET NUMBER
VARIOUS	2005-022LS	VARIOUS	22	6

CONTRACT 62951

LOCATION SUMMARY

COUNTY	CITY/TOWN	CLAIM #	SHEET #	GENERAL LOCATION
COOK	HODGKINS	N/A	7	STEVENSON EXPWY OB EXIT RAMP
COOK	CALUMET PARK	713891	8	I-57 IB EXIT RAMP AND 127 TH ST.
COOK	CHICAGO	N/A	9	ARCHER FROM HALSTED TO WOOD
COOK	CHICAGO	N/A	10-11	EISENHOWER EXPWY IB AFTER THE OGDEN ST. OVERPASS
COOK	CHICAGO	720976	12	KENNEDY EXPWY OB W/O CANFIELD RD.
COOK	WILMETTE	720546 720552	13	I-94 EAST (EDENS EXPWY) N/O GLENVIEW RD.
LAKE	LIBERTYVILLE	N/A	14	ILL 137 AND PETERSON RD.
LAKE	WADSWORTH	N/A	15-16	I-94 WEST / US 41 (N/O RUSSELL RD.)
LAKE	FOX LAKE	N/A	17	ILL 134 BETWEEN W. LEONARD AVE. & US 12 / ILL 59
MCHENRY	CHEMUNG	N/A	18	ILL 173 BETWEEN ISLAND RD. & OAK ST.
MCHENRY	CHEMUNG	N/A	19	ILL 173 BETWEEN FLAT IRON RD. & LAWRENCE RD.
MCHENRY	MUNDELEIN	N/A	20	ILL 176 & US 45
VARIOUS	VARIOUS	N/A	21	VARIOUS LOCATIONS

ILLINOIS DEPARTMENT OF TRANSPORTATION

LOCATION SUMMARY

ROUTE	SECTION	COUNTY	TOTAL SHEETS	SHEET NUMBER
VARIOUS	2005-022LS	VARIOUS	22	7

CONTRACT 62951

NOTIFY FABIOLA QUIROZ 72 HOURS PRIOR TO PLANTING AT (847) 705-4171 FOR LAYOUT.

GENERAL LOCATION MAP

COUNTY: COOK
CLAIM: N/A

CITY/TOWN: HODGKINS

SCHEDULE OF LANDSCAPE ITEMS

DESCRIPTION	QTY/UNIT
ACER X FREEMANII 'AUTUMN BLAZE' (AUTUMN BLAZE MAPLE)	7 EACH
SYRINGA RETICULATA 'IVORY SILK' (IVORY SILK JAPANESE TREE LILAC)	3 EACH

ILLINOIS DEPARTMENT OF TRANSPORTATION

LANDSCAPE REPAIR LOCATION AND LAYOUT PLAN

ROUTE	SECTION	COUNTY	TOTAL SHEETS	SHEET NUMBER
VARIOUS	2005-022LS	VARIOUS	22	9

CONTRACT 62951

SCHEDULE OF LANDSCAPE ITEMS

DESCRIPTION	QTY/UNIT
ACER X FREEMANII 'AUTUMN BLAZE' (AUTUMN BLAZE MAPLE)	25 EACH
GYMNOCLADUS DIOICUS (KENTUCKY COFFETREE)	64 EACH
QUERCUS MACROCARPA (BUR OAK)	26 EACH
CRATAEGUS CRUSGALLI VAR. INERMIS (THORNLESS COCKSPUR HAWTHORN)	19 EACH
RHUS TYPHINA LACINIATA (CUTLEAF STAGHORN SUMAC)	60 EACH
SPIRAEA JAPONICA 'MAGIC CARPET' (MAGIC CARPET JAPANESE SPIREA)	25 EACH
LONICERA XYLOSTEUM 'EMERALD MOUND' (EMERALD MOUND HONEYSUCKLE)	50 EACH
SYRINGA PATULA 'MISS KIM' (MISS KIM MANCHURIAN LILAC)	12 EACH
ROSA 'KNOCK OUT' (KNOCK OUT ROSE)	106 EACH
ROSA 'RADSUN' (CAREFREE SUNSHINE ROSE)	100 EACH
YUCCA FILAMENTOSA (ADAM'S NEEDLE)	63 EACH
WEED CONTROL, PRE-EMERGENT GRANULAR HERBICIDE	200 LBS.
PERENNIAL PLANT CARE	2300 SQ. YD.
PERENNIAL PLANTS, GALLON POT	3.84 UNIT
<i>HEMEROCALLIS 'HAPPY RETURNS'</i>	2.35 UNITS
<i>MISCANTHUS S. 'GRACILLIMUS'</i>	0.19 UNITS
<i>NEPETA X FAASSENII 'WALKER'S LOW'</i>	0.75 UNITS
<i>PENNISETUM ALOPECUROIDES</i>	0.55 UNITS

GENERAL LOCATION MAP

COUNTY: COOK
CLAIM: N/A

CITY/TOWN: CHICAGO
(ALONG ARCHER AVENUE-
BETWEEN HALSTED STREET
AND WOOD STREET)

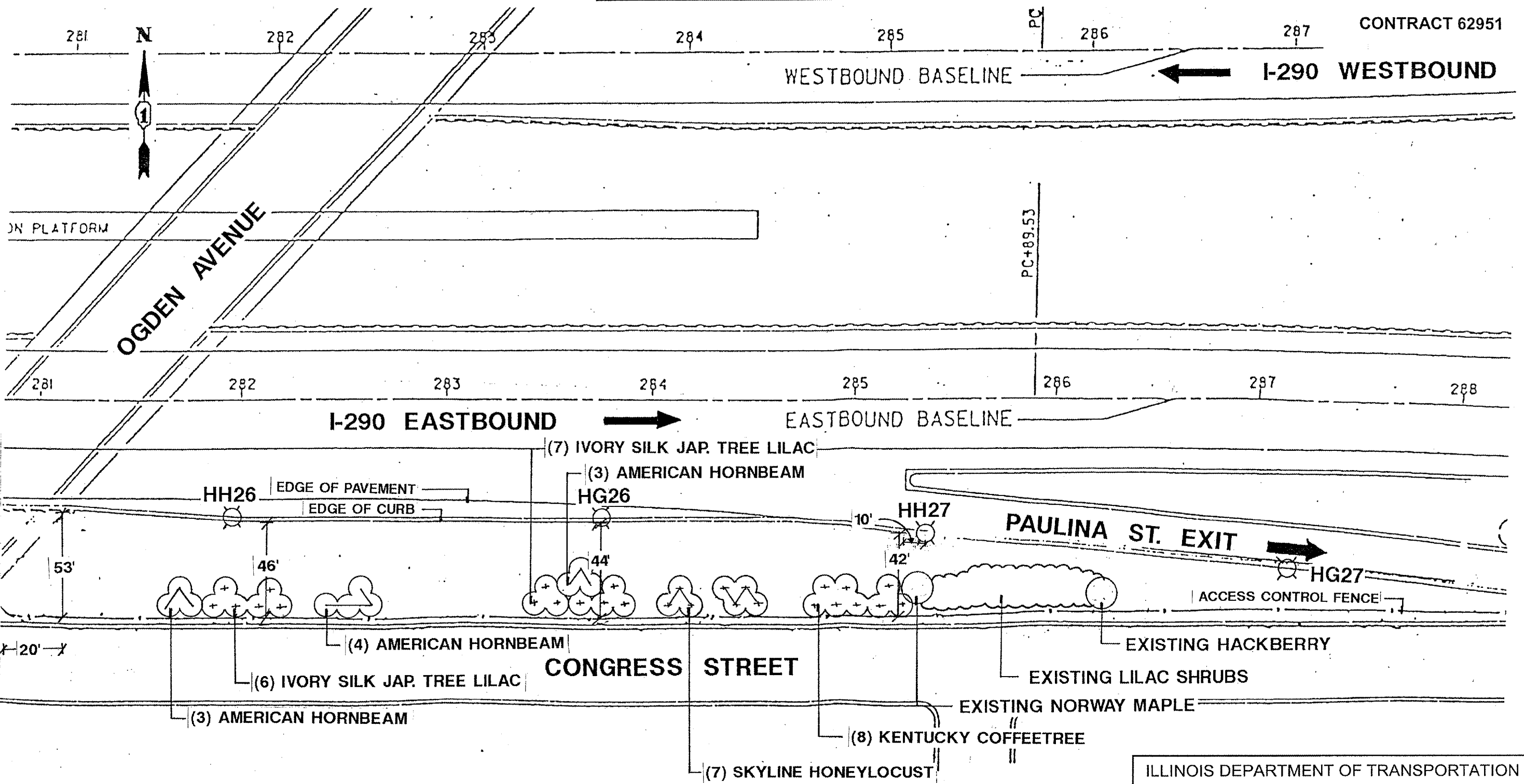
**NOTIFY FABIOLA QUIROZ 72 HOURS PRIOR TO
PLANTING AT (847) 705-4171 FOR LAYOUT.**

ILLINOIS DEPARTMENT OF TRANSPORTATION

LANDSCAPE REPAIR LOCATION AND
LAYOUT PLAN

ROUTE	SECTION	COUNTY	TOTAL SHEETS	SHEET NUMBER
VARIOUS	2005-022LS	VARIOUS	22	11

CONTRACT 62951



NOTE: PROPOSED LANDSCAPE SHALL BE PLANTED 10' AWAY FROM THE ACCESS CONTROL FENCE.

NOT DRAWN TO SCALE

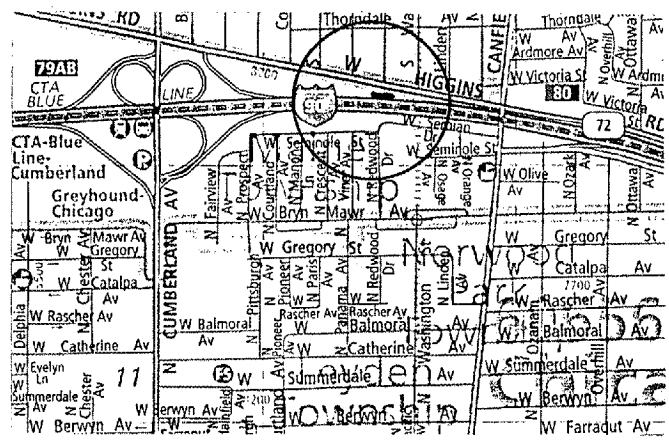
ILLINOIS DEPARTMENT OF TRANSPORTATION
LANDSCAPE REPAIR LOCATION AND LAYOUT PLAN

ROUTE VARIOUS	SECTION 2005-022LS	COUNTY VARIOUS	TOTAL SHEETS 22	SHEET NUMBER 12
------------------	-----------------------	-------------------	-----------------------	-----------------------

CONTRACT 62951

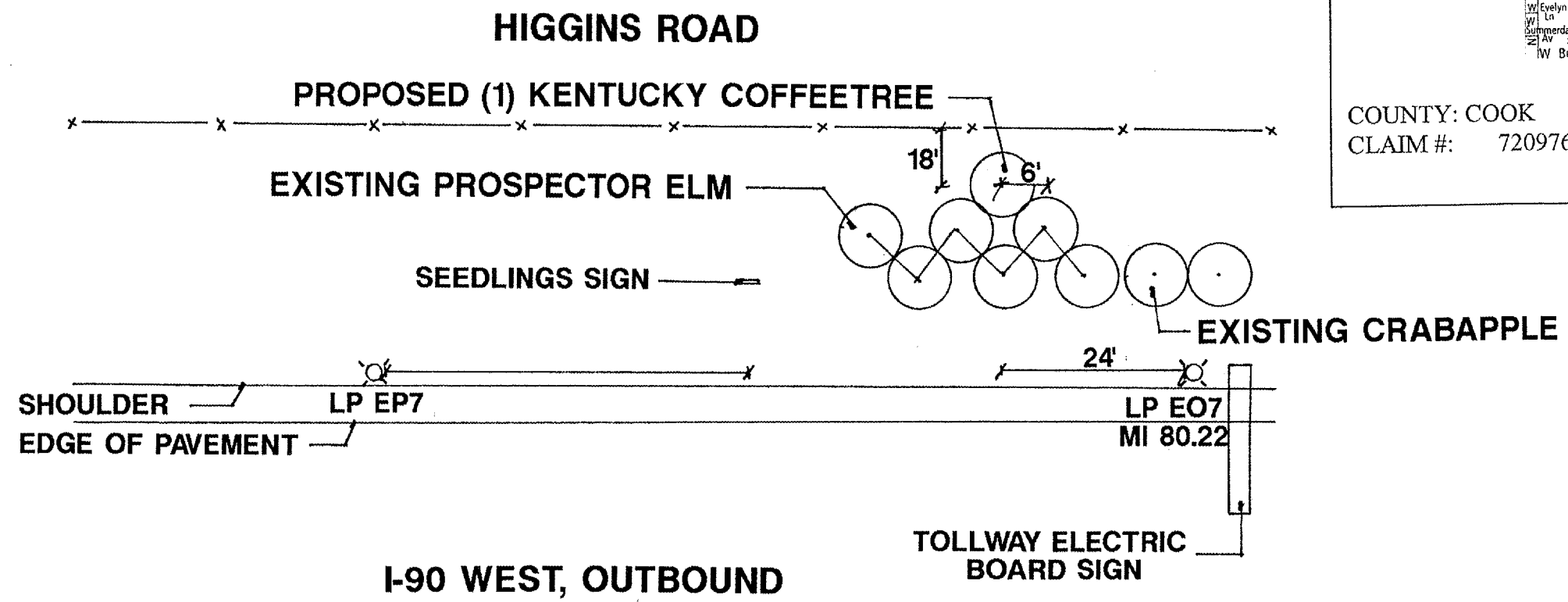


GENERAL LOCATION MAP



COUNTY: COOK
CLAIM #: 720976

CITY/TOWN: CHICAGO



SCHEDULE OF LANDSCAPE ITEMS

DESCRIPTION	QTY/UNIT
GYMNOCLADUS DIOICUS (KENTUCKY COFFEETREE)	1 EACH

NOTE: LOCATION IS WEST OF CANFIELD ROAD.

NOT DRAWN TO SCALE

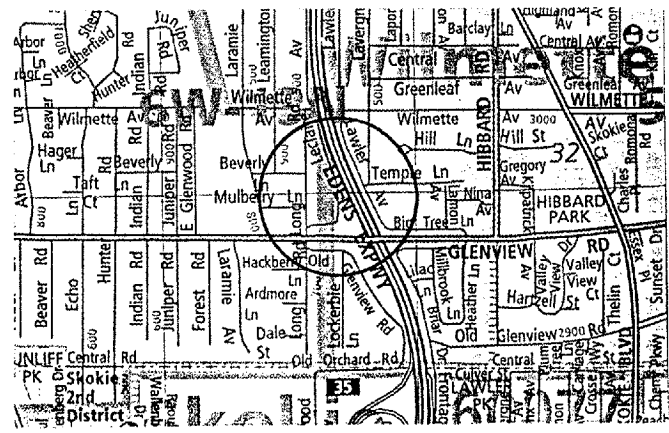
ILLINOIS DEPARTMENT OF TRANSPORTATION
LANDSCAPE REPAIR LOCATION AND LAYOUT PLAN

ROUTE	SECTION	COUNTY	TOTAL SHEETS	SHEET NUMBER
VARIOUS	2005-022LS	VARIOUS	22	13

CONTRACT 62951



GENERAL LOCATION MAP



COUNTY: COOK
 CLAIM #: 720546 720552
 CITY/TOWN: WILMETTE

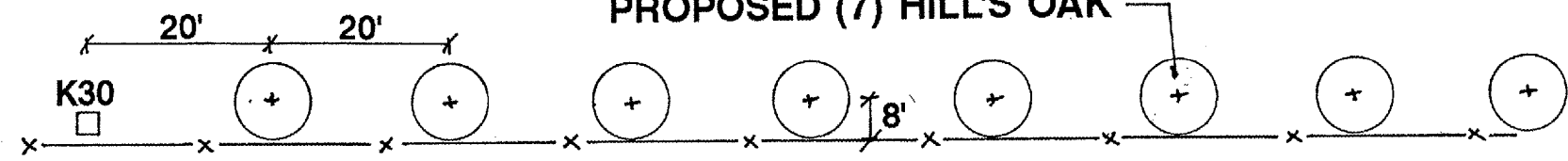
LP KC9
 MI 35.15

BARRIER WALL

I-94 EAST, INBOUND

EDGE OF PAVEMENT
 SHOULDER

PROPOSED (7) HILL'S OAK



LECLAIRE AVENUE

SCHEDULE OF LANDSCAPE ITEMS	
DESCRIPTION	QTY/UNIT
QUERCUS ELLIPSOIDALIS (HILL'S OAK)	7 EACH

NOTE: LOCATION IS LESS THAN A 1/4 MILE NORTH OF GLENVIEW ROAD.

NOT DRAWN TO SCALE

ILLINOIS DEPARTMENT OF TRANSPORTATION
 LANDSCAPE REPAIR LOCATION AND LAYOUT PLAN

ROUTE	SECTION	COUNTY	TOTAL SHEETS	SHEET NUMBER
VARIOUS	2005-022LS	VARIOUS	22	14

CONTRACT 62951

SCHEDULE OF LANDSCAPE ITEMS	
DESCRIPTION	QTY/UNIT
WEED CONTROL, NON-SELECTIVE AND NON-RESIDUAL	1 GALLON
INTERSEEDING, CLASS 4	1 ACRE
INTERSEEDING, CLASS 5A	1 ACRE

GENERAL LOCATION MAP

COUNTY: LAKE
CLAIM #: N/A

CITY/TOWN: LIBERTYVILLE

NOTIFY RICK WANNER 72 HOURS PRIOR TO PLANTING AT (847) 705-4171 FOR LAYOUT.

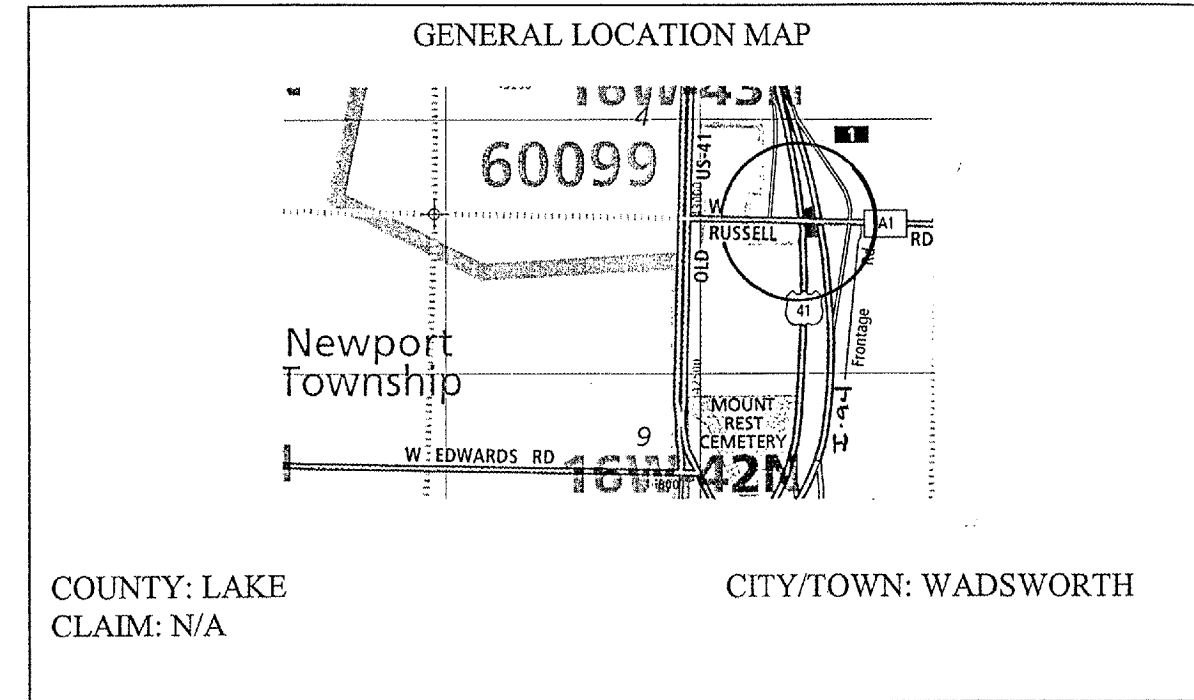
ILLINOIS DEPARTMENT OF TRANSPORTATION
LANDSCAPE REPAIR LOCATION AND LAYOUT PLAN

ROUTE	SECTION	COUNTY	TOTAL SHEETS	SHEET NUMBER
VARIOUS	2005-022LS	VARIOUS	22	15

CONTRACT 62951

SCHEDULE OF LANDSCAPE ITEMS

DESCRIPTION	QTY/UNIT
QUERCUS ELLIPSOIDALIS (HILL'S OAK)	6 EACH
RHUS TYPHINA 'LACINIATA' (CUTLEAF STAGHORN SUMAC)	100 EACH
PERENNIAL PLANTS, GALLON POT	1.80 UNIT
<i>ANDROPOGON SCOPARIUS</i>	0.30 UNITS
<i>ECHINACEA PURPUREA</i>	0.50 UNITS
<i>ASCLEPIAS TUBEROSA</i>	0.50 UNITS
<i>LIATRIS PYCNOSTACHYA</i>	0.50 UNITS
TREE CARE	7 EACH
PERENNIAL PLANT CARE	90 SQ. YD.
INTERSEEDING, CLASS 4	2 ACRE
INTERSEEDING, CLASS 5A	2 ACRE
WEED CONTROL, NON-SELECTIVE AND NON-RESIDUAL	5 GAL.

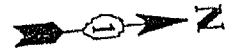


SEE NEXT PAGE FOR LAYOUT.

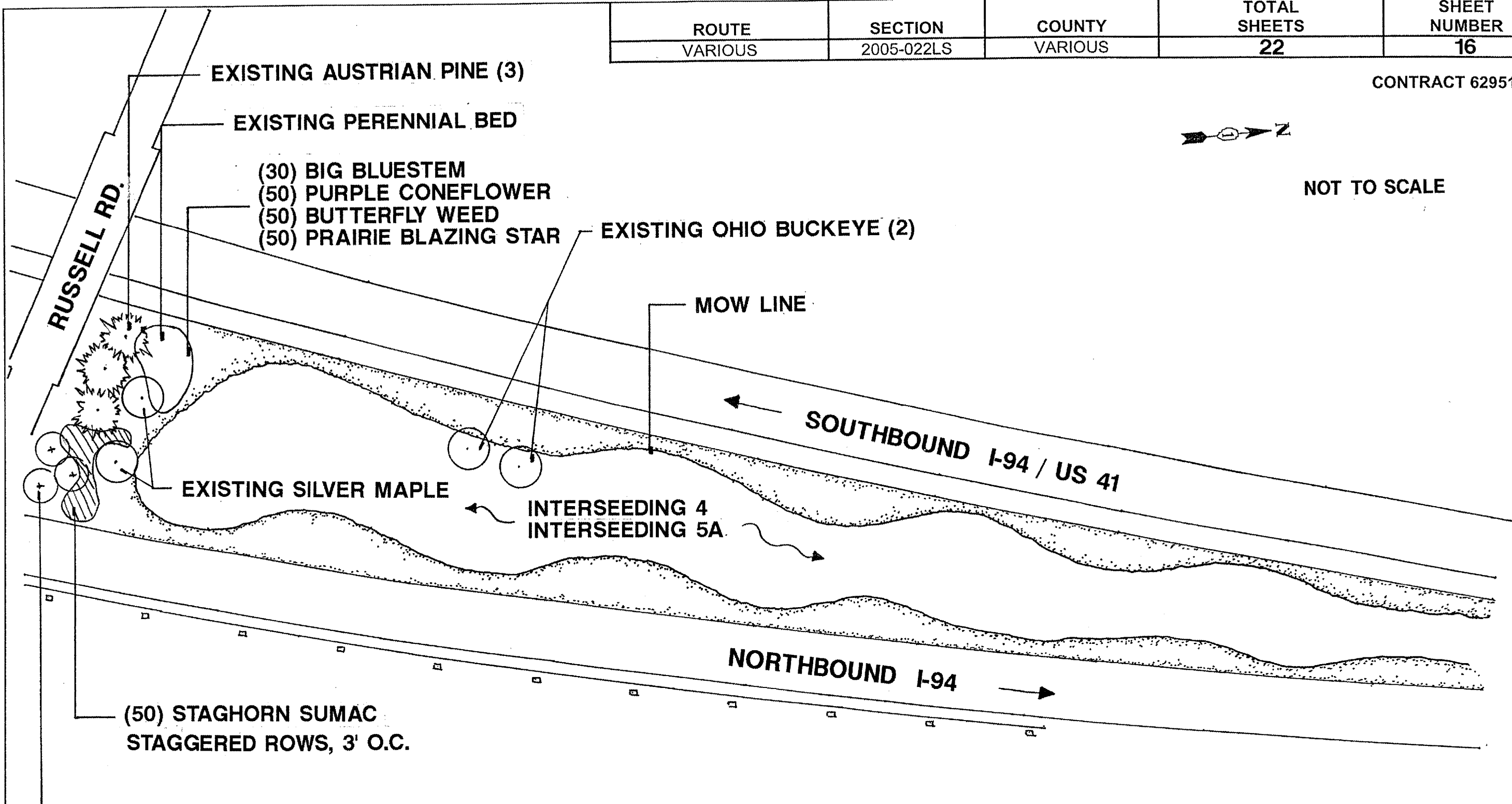
ILLINOIS DEPARTMENT OF TRANSPORTATION
LANDSCAPE REPAIR LOCATION AND
LAYOUT PLAN

ROUTE	SECTION	COUNTY	TOTAL SHEETS	SHEET NUMBER
VARIOUS	2005-022LS	VARIOUS	22	16

CONTRACT 62951



NOT TO SCALE



(50) STAGHORN SUMAC
STAGGERED ROWS, 3' O.C.

(3) HILL'S OAK,
SPACED AT 15' O.C.

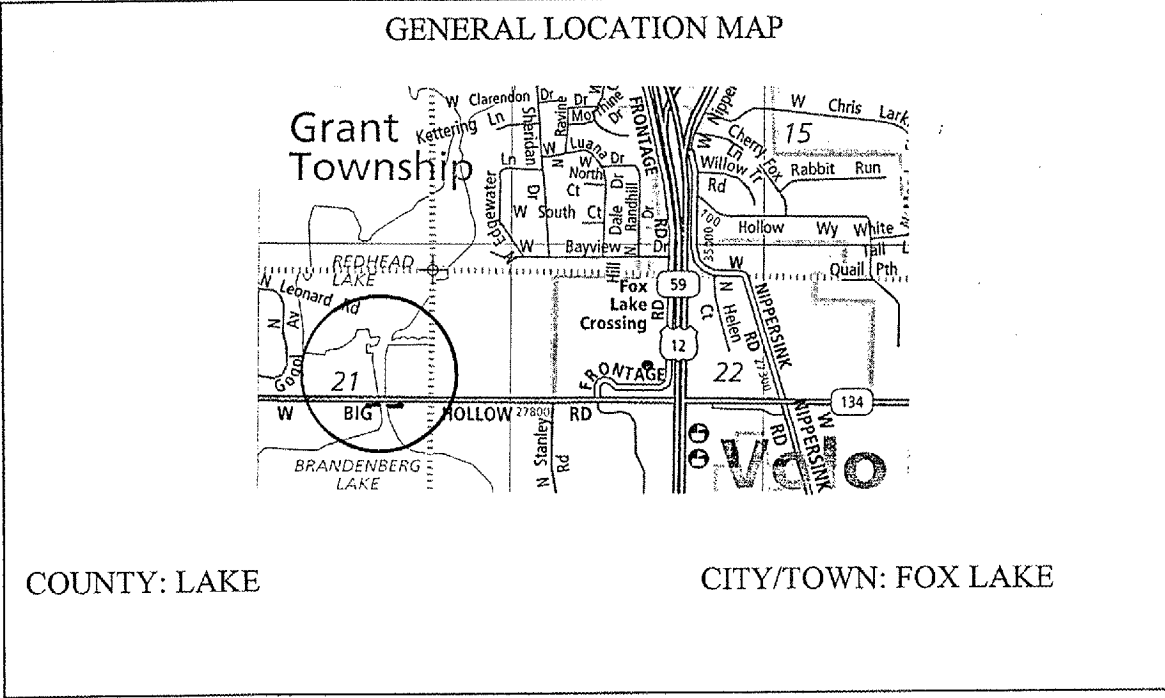
NOTE

ON THE BRIDGE CONE SOUTH OF RUSSELL RD, (3) HILL'S OAK & (50) STAGHORN SUMAC WILL BE PLANTED AND SPACED ACCORDINGLY (AS LISTED ON THIS PLAN). ON THE BRIDGE CONE NORTH OF RUSSELL RD., PERENNIALS WILL BE SPACED 12" IN THE EXISTING PERENNIAL BED. PLEASE NOTIFY MELISSA DEL ROSARIO 72 HOURS PRIOR TO PLANTING AT (847) 705-4171 FOR LAYOUT.

ILLINOIS DEPARTMENT OF TRANSPORTATION
LANDSCAPE REPAIR LOCATION AND LAYOUT PLAN

ROUTE	SECTION	COUNTY	TOTAL SHEETS	SHEET NUMBER
VARIOUS	2005-022LS	VARIOUS	22	17

CONTRACT 62951



W. LEONARD AVE.

(APPROX. 0.2 MI. FROM W. LEONARD TO SITE)

HOUSE #28148

HOUSE #28070

GUARDRAIL

BAY LANE TO INTERSECTION OF US 12/ILL 59 & ILL 134

HOUSE #28133

REMOVE AND REPLACE DEAD TREES WITH (10) KENTUCKY COFFEETREE

EXISTING TREES

BRANDERBURG LAKE

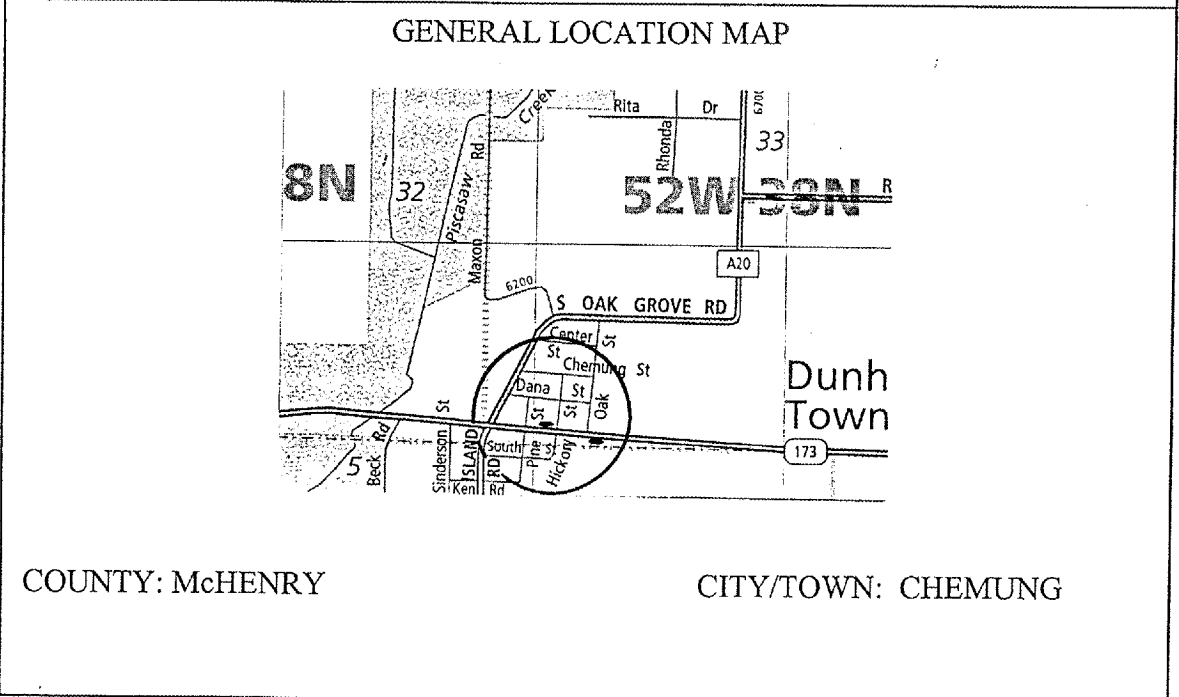
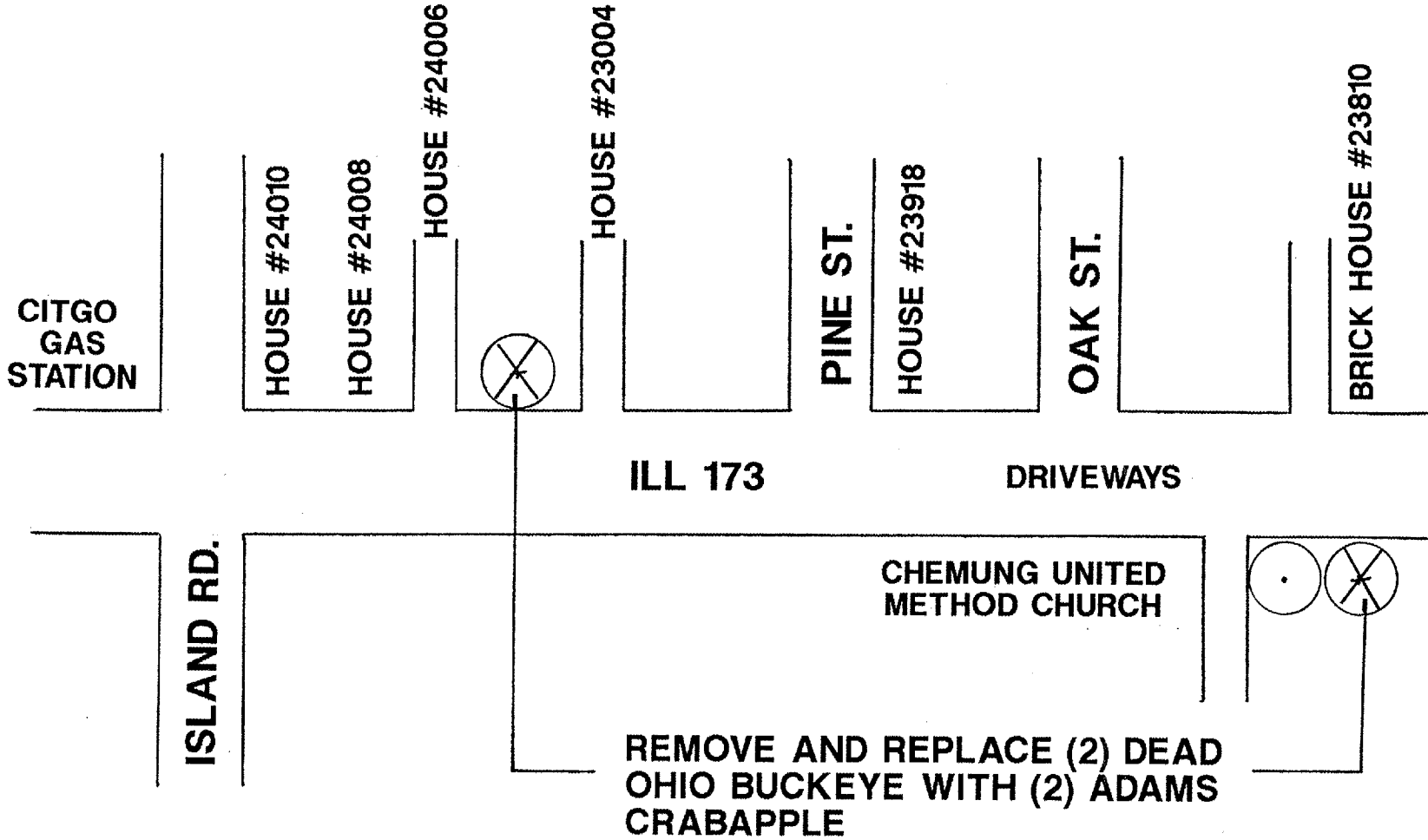
SCHEDULE OF LANDSCAPE ITEMS	
DESCRIPTION	QTY/UNIT
GYMNOCLADUS DIOICUS (KENTUCKY COFFEETREE)	10 EACH

NOT DRAWN TO SCALE

ILLINOIS DEPARTMENT OF TRANSPORTATION
LANDSCAPE REPAIR LOCATION AND LAYOUT PLAN

ROUTE	SECTION	COUNTY	TOTAL SHEETS	SHEET NUMBER
VARIOUS	2005-022LS	VARIOUS	22	18

CONTRACT 62951



SCHEDULE OF LANDSCAPE ITEMS

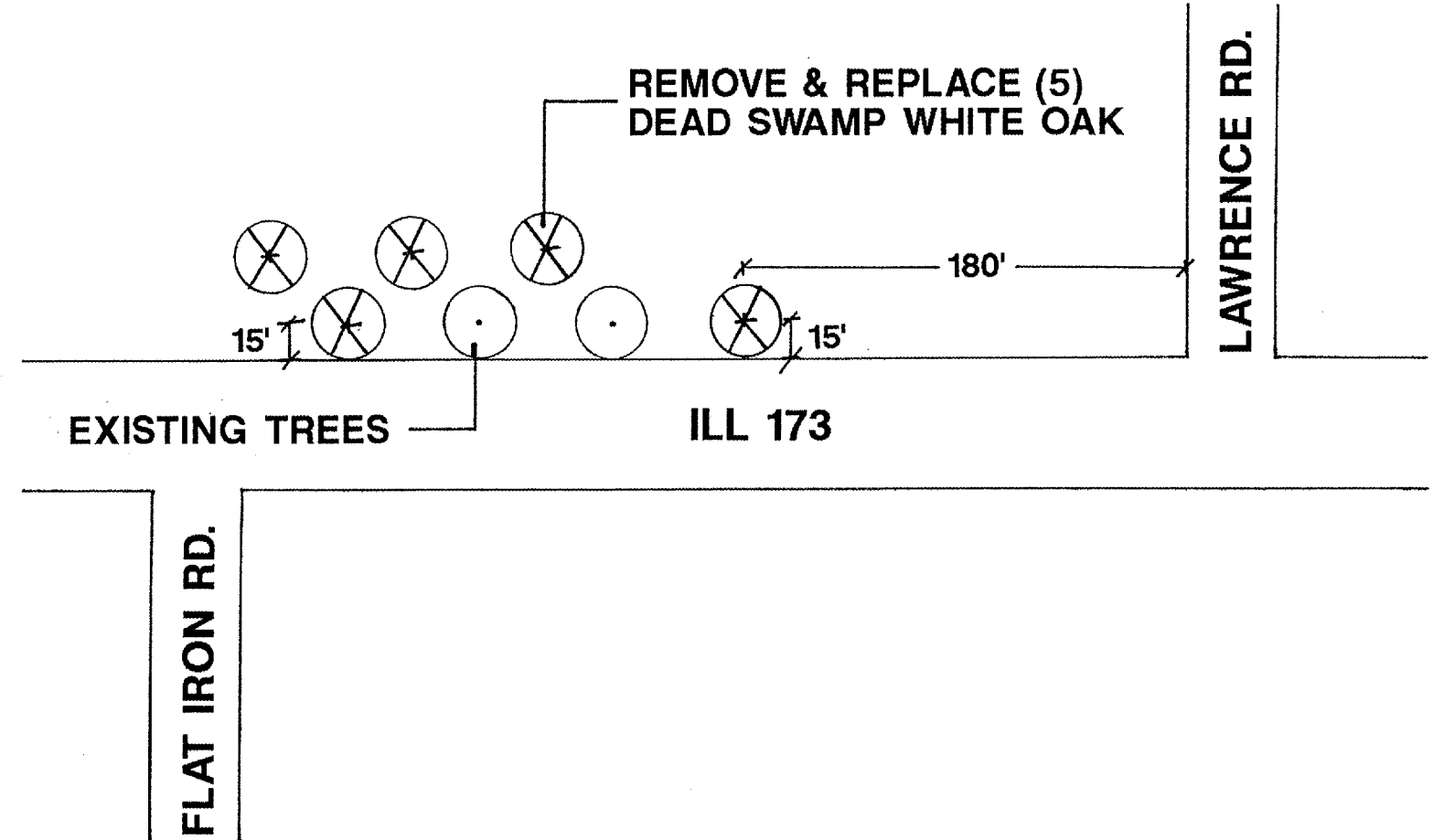
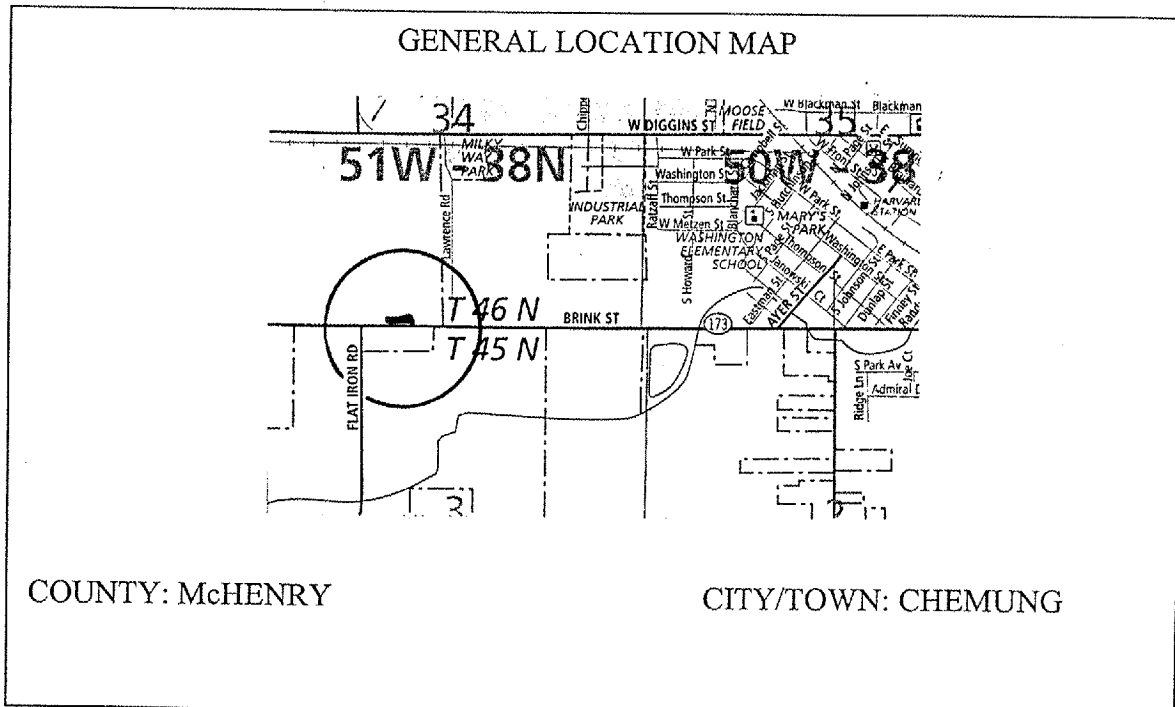
DESCRIPTION	QTY/UNIT
MALUS 'ADAMS' (ADAMS CRABAPPLE)	2 EACH

NOT DRAWN TO SCALE

ILLINOIS DEPARTMENT OF TRANSPORTATION
LANDSCAPE REPAIR LOCATION AND LAYOUT PLAN

ROUTE VARIOUS	SECTION 2005-022LS	COUNTY VARIOUS	TOTAL SHEETS 22	SHEET NUMBER 19
------------------	-----------------------	-------------------	-----------------------	-----------------------

CONTRACT 62951



SCHEDULE OF LANDSCAPE ITEMS

DESCRIPTION	QTY/UNIT
QUERCUS BICOLOR (SWAMP WHITE OAK)	5 EACH

NOT DRAWN TO SCALE

ILLINOIS DEPARTMENT OF TRANSPORTATION
LANDSCAPE REPAIR LOCATION AND
LAYOUT PLAN

ROUTE	SECTION	COUNTY	TOTAL SHEETS	SHEET NUMBER
VARIOUS	2005-022LS	VARIOUS	22	20

CONTRACT 62951

NOTIFY BART COLVIN 72 HOURS PRIOR TO PLANTING AT (847) 705-4171 FOR LAYOUT.

GENERAL LOCATION MAP

COUNTY: McHENRY
CLAIM: N/A

CITY/TOWN: MUNDELEIN

SCHEDULE OF LANDSCAPE ITEMS

DESCRIPTION	QTY/UNIT
GYMNOCLADUS DIOICUS (KENTUCKY COFFEETREE)	1 EACH
QUERCUS BICOLOR (SWAMP WHITE OAK)	4 EACH
QUERCUS MACROCARPA (BUR OAK)	5 EACH
PICEA PUNGENS (COLORADO SPRUCE)	3 EACH
PINUS NIGRA (AUSTRIAN PINE)	2 EACH

ILLINOIS DEPARTMENT OF TRANSPORTATION
LANDSCAPE REPAIR LOCATION AND LAYOUT PLAN

ROUTE	SECTION	COUNTY	TOTAL SHEETS	SHEET NUMBER
VARIOUS	2005-022LS	VARIOUS	22	21

CONTRACT 62951

SCHEDULE OF LANDSCAPE ITEMS

DESCRIPTION	QTY/UNIT
GLEDITSIA TRIACANTHOS VAR. INERMIS 'SKYLINE' SKYLINE HONEYLOCUST	10 EACH
GYMNOCLADUS DIOICUS KENTUCKY COFFEETREE	10 EACH
MALUS 'ADAMS' ADAMS CRABAPPLE	5 EACH
PINUS NIGRA (AUSTRIAN PINE)	5 EACH
QUERCUS MACROCARPA BUR OAK	10 EACH
SYRINGA RETICULATA 'IVORY SILK' IVORY SILK JAPANESE TREE LILAC	5 EACH

LOCATIONS WILL BE DETERMINED BY THE ENGINEER.

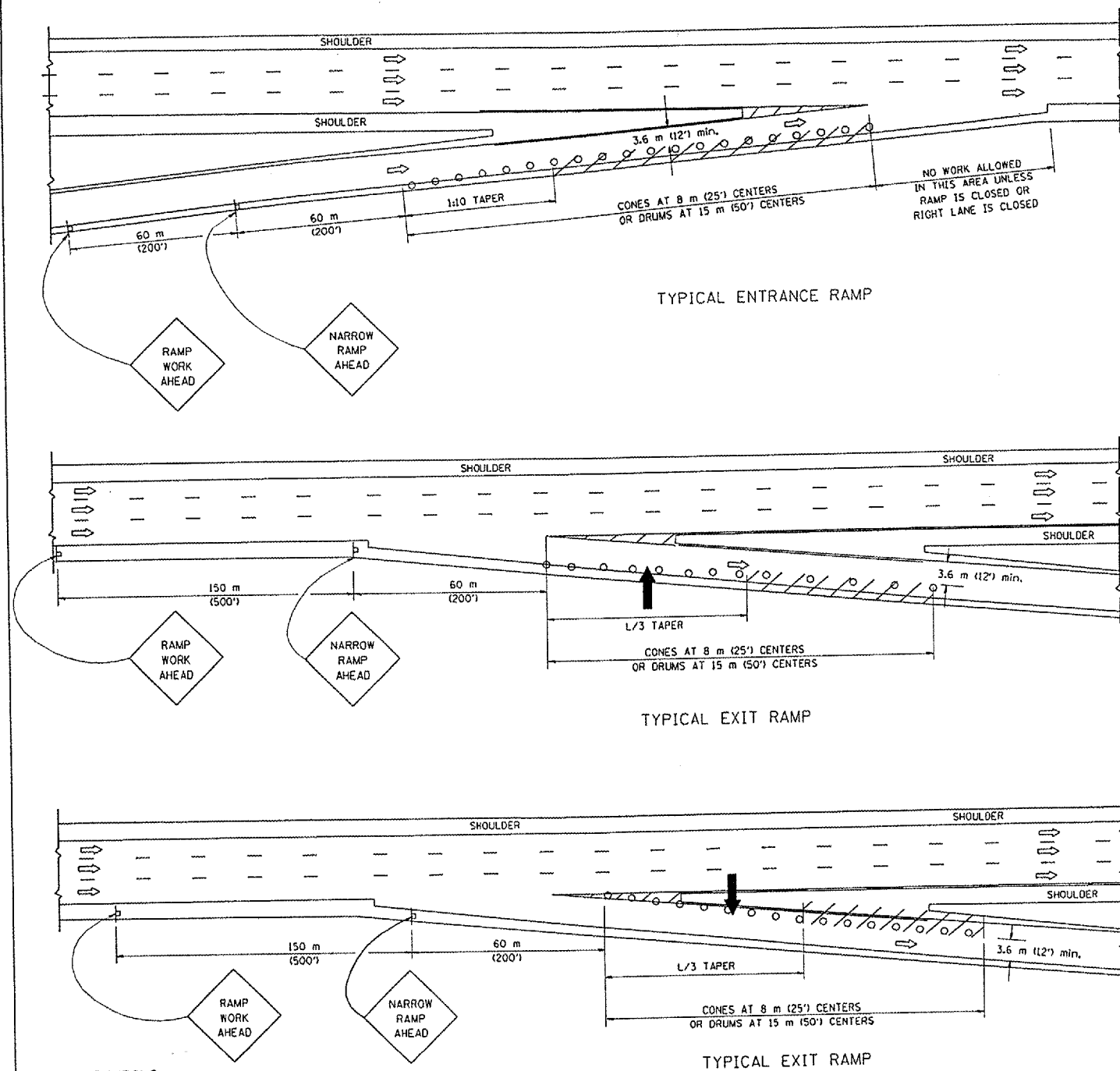
GENERAL LOCATION MAP

COUNTY: VARIOUS
CLAIM #: N/A

CITY/TOWN: VARIOUS

ILLINOIS DEPARTMENT OF TRANSPORTATION
LANDSCAPE REPAIR LOCATION AND
LAYOUT PLAN

PARTIAL RAMP CLOSURE DETAILS



SYMBOLS

- ARROWBOARD
- WORK AREA
- SIGN ON PORTABLE OR PERMANENT SUPPORT
- FLAGGER WITH CONTROL SIGN
- DRUM WITH MONO-DIRECTIONAL STEADY BURNING LIGHT
- CONES - 700 (28) IN HEIGHT

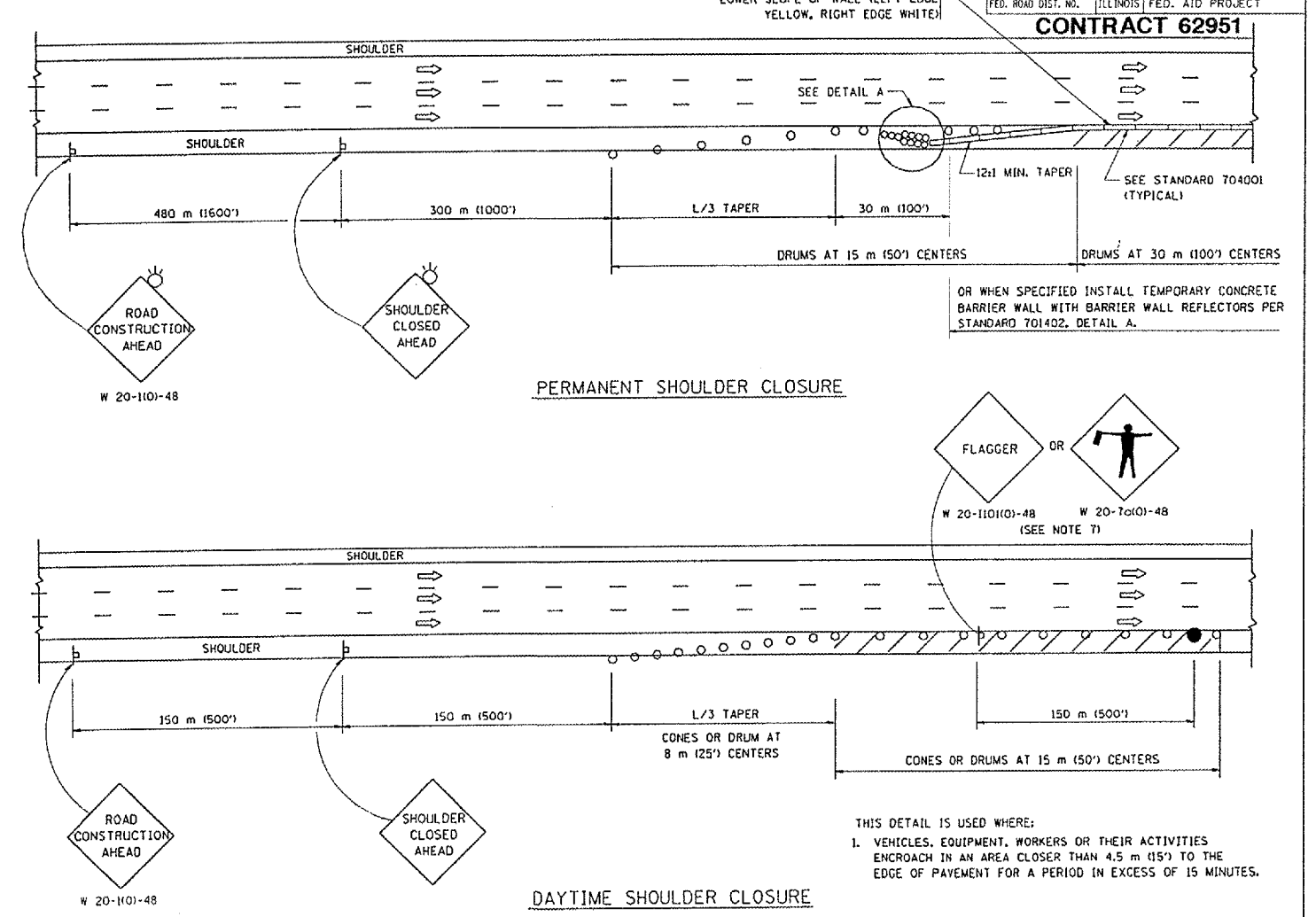
GENERAL NOTES

1. THE "L" DISTANCE EQUALS:

SPEED LIMIT	FORMULAS
80 km/h (45 mph) OR GREATER:	METRIC: $L=0.65(W/S)$ ENGLISH: $L=(W/S)$

W = WIDTH OF OFFSET IN METERS (FEET)
S = NORMAL POSTED SPEED KM/H (MPH)
2. PLASTIC DRUMS WITH HIGH PERFORMANCE REFLECTIVE SHEETING AND STEADY BURNING LIGHTS ARE REQUIRED FOR ALL NIGHTTIME CLOSURES.
3. ALL SIGNS SHALL BE POST MOUNTED IF THE CLOSURE TIME EXCEEDS FOUR DAYS.
4. FLASHING LIGHTS SHALL BE USED DURING THE HOURS OF DARKNESS AND SHALL BE INSTALLED ABOVE THE FIRST TWO SETS OF SIGNS.

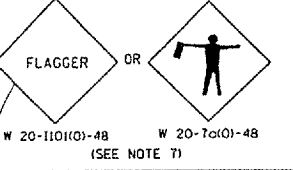
SHOULDER CLOSURE DETAILS



F.A. RTE.	SECTION	COUNTY	TOTAL SHEETS	SHEET NO.
2005-022LS	VARIOUS		22	22
STA.	TO STA.			
FED. ROAD DIST. NO.	ILLINOIS	FED. AID PROJECT		

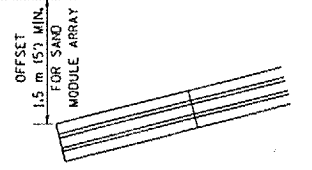
CONTRACT 62951

OR WHEN SPECIFIED INSTALL TEMPORARY CONCRETE BARRIER WALL WITH BARRIER WALL REFLECTORS PER STANDARD 701402, DETAIL A.



THIS DETAIL IS USED WHERE:
1. VEHICLES, EQUIPMENT, WORKERS OR THEIR ACTIVITIES ENCRDACH IN AN AREA CLOSER THAN 4.5 m (15') TO THE EDGE OF PAYEMENT FOR A PERIOD IN EXCESS OF 15 MINUTES.

ARRAY DESIGN PER MANUFACTURER TO BE NCHRP 350 COMPLIANT FOR POSTED SPEED.



DETAIL "A"
IMPACT ATTENUATOR, TEMPORARY
(SEE NOTE 5)

5. THE IMPACT ATTENUATOR, TEMPORARY IS NOT REQUIRED WHEN THE TEMPORARY CONCRETE BARRIER WALL IS OUTSIDE THE CLEAR ZONE OR IS TIED INTO THE EXISTING GUARDRAIL. IF OFFSET IS LESS THAN 5 FEET USE "TRAFFIC BARRIER TERMINAL, TYPE III, TEMPORARY" DEVICE TO MEET NCHRP350 FOR POSTED SPEED.
6. AUTHORIZATION FROM THE DISTRICT'S BUREAU OF TRAFFIC IS REQUIRED FOR ALL FREEWAY CLOSURES.
7. THE FLAGGER AND FLAGGER SIGN ARE REQUIRED AT THE ABOVE WORK SITES WHEN:
 - a. FOUR OR MORE WORK VEHICLES ENTER THE TRAFFIC LANES IN A ONE HOUR PERIOD.
 - b. THE WORK ACTIVITY REQUIRES FREQUENT ENCRDACHMENT INTO THE LANE OPEN TO TRAFFIC.
 THE FLAGGER SHALL BE STATIONED APPROXIMATELY 30 m (100') TO 60 m (200') IN ADVANCE OF THE WORKERS.

REVISIONS	
NAME	DATE
DWS	11/96
JAF	12/02
NCHRP 350	04/03

ALL DIMENSIONS ARE IN MILLIMETERS (INCHES) UNLESS OTHERWISE SHOWN.

ILLINOIS DEPARTMENT OF TRANSPORTATION

TRAFFIC CONTROL DETAILS FOR FREEWAY SHOULDER CLOSURES PARTIAL RAMP CLOSURES

SCALE: NONE
DATE: 05/06/2003

DRAWN BY: DWS
CHECKED BY: TC-17