

F.A.I. RTE.	SECTION	COUNTY	TOTAL SHEETS	SHEET NO.
80	99-3B-BR-1	WILL	6	1

STATE OF ILLINOIS
DEPARTMENT OF TRANSPORTATION
DIVISION OF HIGHWAYS
**PROPOSED
HIGHWAY PLANS**

FOR INDEX OF SHEETS, SEE SHEET NO. 2

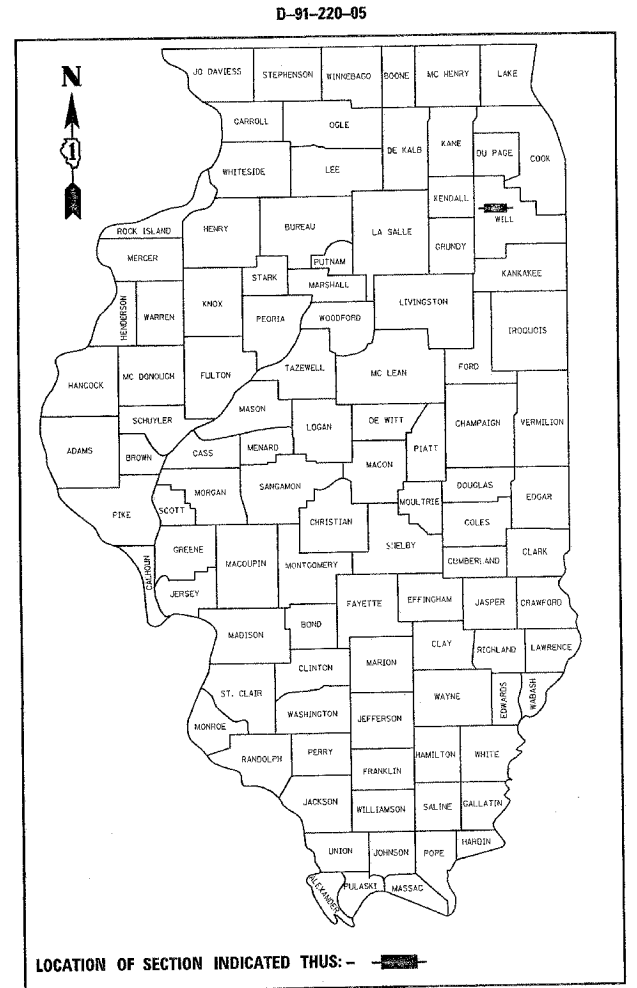
**THIS IMPROVEMENT IS LOCATED IN
THE VILLAGE OF JOLIET**

TRAFFIC DATA:

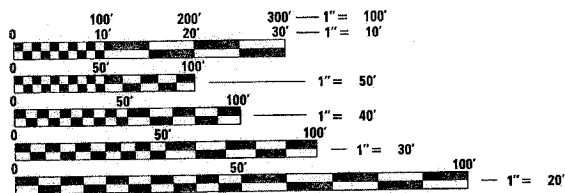
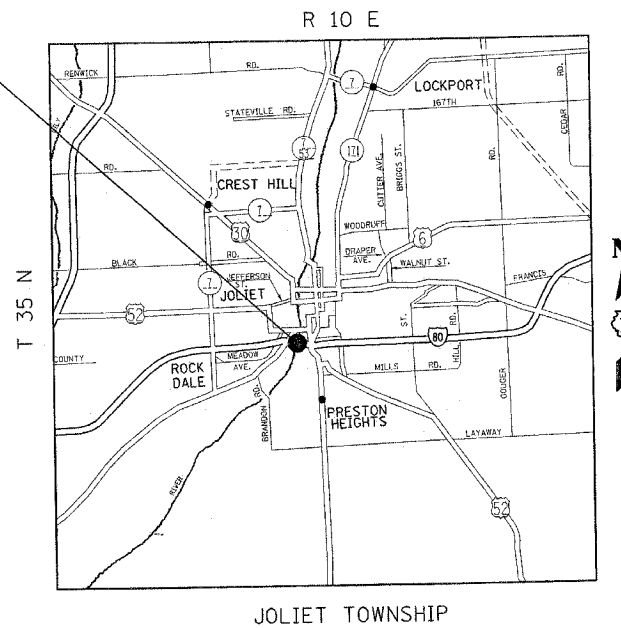
ADT (2004): 40,750
SPEED LIMIT: 65 MPH

**FAI ROUTE 80: I-80
OVER THE DES PLAINES RIVER
SN 099-0056, -0057
SECTION 99-3B-BR-1
STRUCTURAL STEEL REPAIR
WILL COUNTY**

C-91-220-05



LOCATION
I-80 OVER THE
DES PLAINES RIVER
SN 099-0056, -0057



FULL SIZE PLANS HAVE BEEN PREPARED USING STANDARD ENGINEERING SCALES. REDUCED SIZED PLANS WILL NOT CONFORM TO STANDARD SCALES. IN MAKING MEASUREMENTS ON REDUCED PLANS, THE ABOVE SCALES MAY BE USED.

J.U.L.I.E.
JOINT UTILITY LOCATION INFORMATION FOR EXCAVATION
1-800-892-0123

CONTRACT NO. 62967

STATE OF ILLINOIS
DEPARTMENT OF TRANSPORTATION
DIVISION OF HIGHWAYS

SUBMITTED Oct. 27 20 05
Piane M. O'Keefe
DEPUTY DIRECTOR OF HIGHWAYS, REGION ENGINEER

December 9, 20 05
Mike Fine
ENGINEER OF DESIGN AND ENVIRONMENT

December 9, 20 05
Eric Harml
DEPUTY DIRECTOR OF HIGHWAYS, CHIEF ENGINEER

**PRINTED BY THE AUTHORITY
OF THE STATE OF ILLINOIS**

DISTRICT ONE DESIGN PLAN PREPARATION ENGINEER
KEN ENG/ROBERT BORO (847) 705-4178

F.A. RTE.	SECTION	COUNTY	TOTAL SHEETS	SHEET NO.
80	99-3B-BR-1	WILL	6	2
STA. _____		TO STA. _____		
FED. ROAD DIST. NO. _____		ILLINOIS FED. AID PROJECT		

INDEX OF SHEETS

1. COVER SHEET
2. INDEX, GENERAL NOTES, STATE STANDARDS
3. SUMMARY OF QUANTITIES
4. - 5. BRIDGE PLANS
6. FREEWAY EXIT AND ENTRANCE RAMP CLOSURE DETAILS

STATE STANDARDS

- 701400-02 APPROACH TO LANE CLOSURE, FREEWAY/EXPRESSWAY
- 701401-03 LANE CLOSURE, FREEWAY/EXPRESSWAY
- 701411-03 LANE CLOSURE, MULTILANE, AT ENTRANCE OR EXIT RAMP, FOR SPEEDS > 45 MPH
- 701426-02 LANE CLOSURE, MULTILANE, INTERMITTENT OR MOVING OPERATIONS, FOR SPEEDS > 45 MPH
- 702001-05 TRAFFIC CONTROL DEVICES

GENERAL NOTES

BEFORE STARTING ANY WORK THE CONTRACTOR SHALL CALL "J.U.L.I.E" AT (800) 892-0123 FOR FIELD LOCATIONS OF BURIED ELECTRIC, TELEPHONE AND GAS UTILITIES. 48 HOUR NOTIFICATION IS REQUIRED

THE CONTRACTOR WILL NOT BE ALLOWED TO SET UP A YARD OR FIELD OFFICE ON STATE PROPERTY WITHOUT WRITTEN PERMISSION FROM THE DEPARTMENT

WHEN ARTIFICIAL LIGHTING IS UTILIZED IN NIGHT OPERATIONS, THE CONTRACTOR SHALL EXERCISE THE UTMOST PRECAUTIONS IN PREVENTING ADVERSE VISIBILITY TO THE MOTORING PUBLIC AND ADJOINING RESIDENTIAL AREAS.

IT SHALL BE THE CONTRACTORS RESPONSIBILITY TO VERIFY ALL DIMENSIONS AND CONDITIONS EXISTING IN THE FIELD PRIOR TO CONSTRUCTION AND ORDERING OF MATERIALS.

THE CONTRACTOR SHALL CONTACT THE DISTRICT ONE TRAFFIC CONTROL SUPERVISOR AT (847) 705-4151 FOR EXPRESSWAYS A MINIMUM OF 72 HOURS IN ADVANCE OF BEGINNING WORK.

THESE PLANS HAVE BEEN PREPARED FROM NOTES RECEIVED FROM BRIDGE INSPECTORS

DO NOT SCALE PLANS FOR CONSTRUCTION DIMENSIONS

THE CONTRACTOR SHALL OBTAIN COAST GUARD APPROVAL TO OCCUPY NAVIGABLE WATERS, IF REQUIRED, FOR THE PROPOSED WORK. A WORK PLAN SHALL BE PREPARED BY THE CONTRACTOR, REVIEWED AND APPROVED BY THE ENGINEER AND BE SUBMITTED BY THE ENGINEER TO THE COAST GUARD AT THE ADDRESS LISTED BELOW FOR APPROVAL:

BRIDGE ADMINISTRATOR
 US COAST GUARD
 EIGHTH COAST GUARD DISTRICT
 1222 SPRUCE ST.
 ST. LOUIS, MO 63103-2832

PLOT DATE = 10/27/2005
 FILE NAME = c:\projects\122685\122685.dwg
 PLOT SCALE = 50.0000 / IN.
 USER NAME = stanlager

REVISIONS	
NAME	DATE

ILLINOIS DEPARTMENT OF TRANSPORTATION

INDEX, GENERAL NOTES AND STATE STANDARDS

SCALE: VERT. _____
 HORIZ. _____
 DATE _____

DRAWN BY _____
 CHECKED BY _____

Rev.

F.A.I. RTE.	SECTION	COUNTY	TOTAL SHEETS	SHEET NO.
80	99-38-BR-1	WILL	4	3
FED. ROAD DIST. NO. 1		ILLINOIS	HIGHWAY PROJECT	

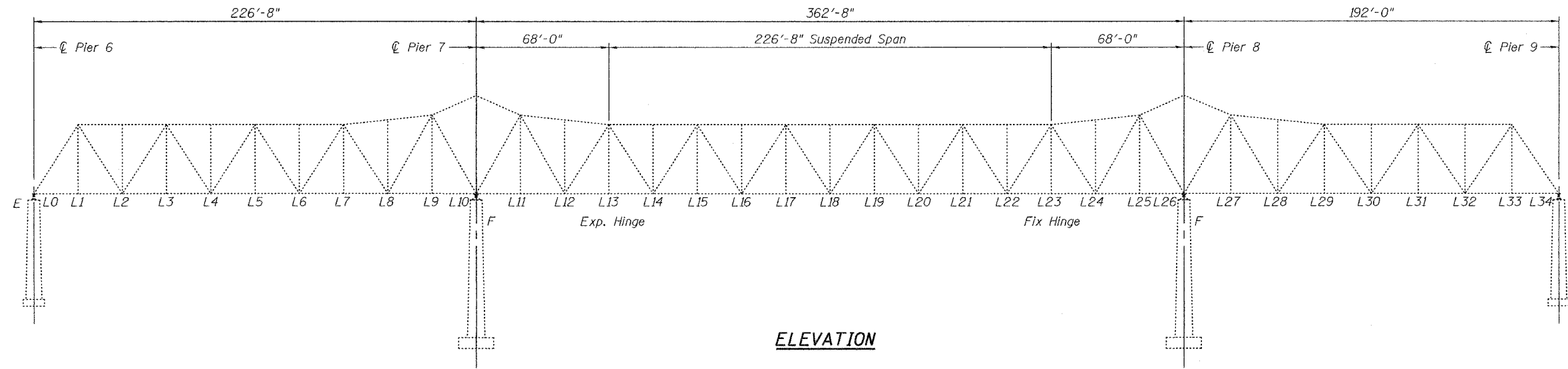
SUMMARY OF QUANTITIES			CONSTRUCTION TYPE CODE						
CODE NO	ITEM	UNIT	TOTAL QUANTITIES	URBAN SFTY-2A 100% STATE					
50501130	STRUCTURAL STEEL REPAIR	POUND	18480	18480					
67000400	ENGINEER'S FIELD OFFICE, TYPE A	CAL MO	1	1					
67100100	MOBILIZATION	L SUM	1	1					
X7011015	TRAFFIC CONTROL AND PROTECTION (EXPRESSWAYS)	L SUM	1	1					

10/27/2005 10:12:05 AM HP200500137

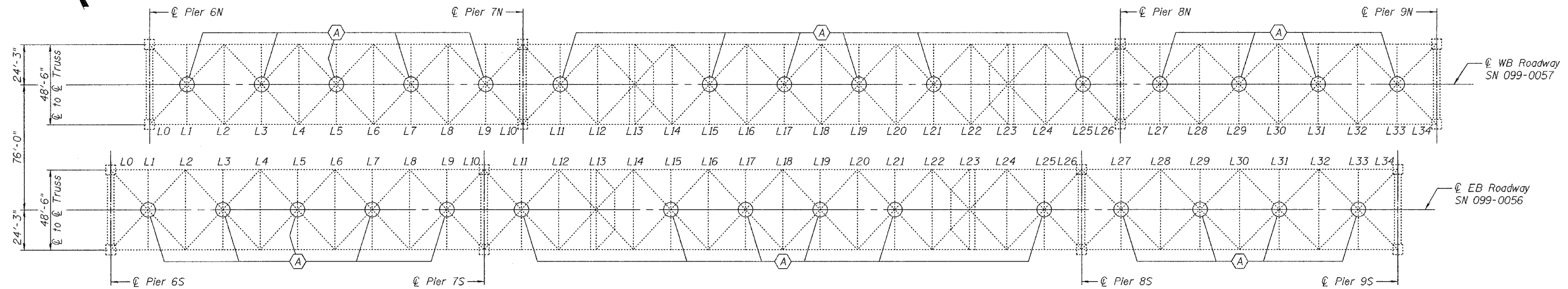
REVISIONS		ILLINOIS DEPARTMENT OF TRANSPORTATION SUMMARY OF QUANTITIES
NAME	DATE	

STATE OF ILLINOIS
DEPARTMENT OF TRANSPORTATION

ROUTE NO.	SECTION	COUNTY	TOTAL SHEETS	SHEET NO.
		Will	6	4
SHEET NO. 1				
2 SHEETS				
FED. ROAD DIST. NO. 7	ILLINOIS	FED. AID PROJECT		
Contract Number: 62967				



ELEVATION



BOTTOM LATERAL BRACING PLAN

GENERAL NOTES

(A) Remove and replace gusset

All structural steel shall conform to AASHTO Classification M-270 Gr. 36, unless otherwise noted.

Fasteners shall be high strength bolts. Bolts 7/8"φ, open holes 15/16"φ, unless otherwise noted.

The Contractor shall grind all cracked welds parallel to the direction of the existing weld and not perpendicular to the weld.

Plan dimensions and details relative to existing structure have been taken from existing plans and are subject to nominal construction variations. It shall be the Contractor's responsibility to verify such dimensions and details in the field and make necessary approved adjustments prior to construction or ordering of materials. Such variations shall not be cause for additional compensation for a change in the scope of the work, however, the Contractor will be paid for the quantity actually furnished at the unit price bid for the work.

Cost of removal and re-installation of all members necessary to complete the work as detailed on the plans and as specified in the Special Provisions shall be included in the cost of Structural Steel Repair.

The existing structural steel coating contains lead. The Contractor should take appropriate precautions to deal with the presence of lead on this project.

Existing structural steel that will be in contact with new structural steel shall be cleaned and painted prior to erection as required by the Special Provision "Cleaning and Painting Contact Surface Areas of Existing Steel Structures".

All structural steel shall be shop painted with the inorganic zinc rich primer per AASHTO M300, Type 1. Cost included with Structural Steel Repair.

TOTAL BILL OF MATERIAL

ITEM	UNIT	QUANTITY
Structural Steel Repair	Pound	18,480

DESIGNED	<i>[Signature]</i>
CHECKED	VECTOR H. VELTZ
DRAWN	<i>[Signature]</i>
CHECKED	S.J.B. / VHV

November 10, 2005
EXAMINED John A. Morris
ENGINEER OF STRUCTURAL SERVICES
PASSED Ralph E. Anderson
ENGINEER OF BRIDGES AND STRUCTURES



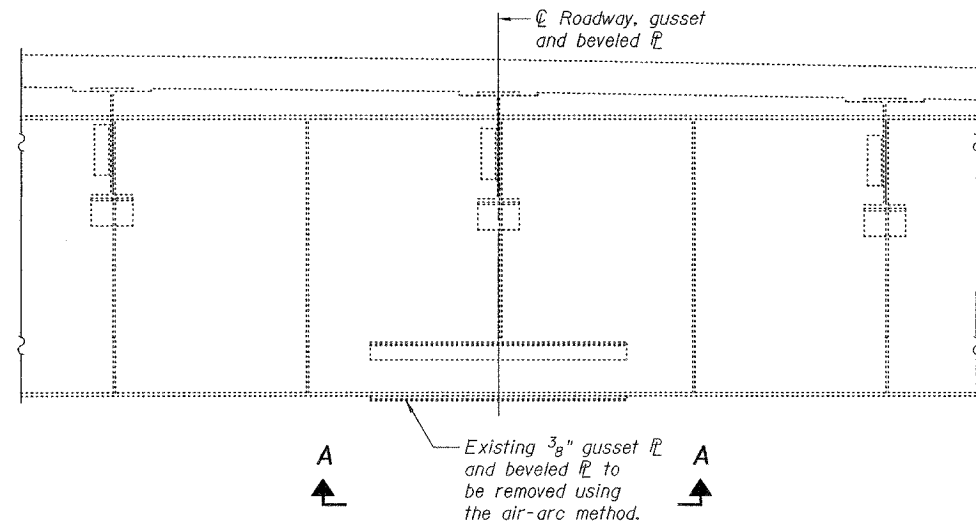
Expires: November 30, 2006

PLAN AND ELEVATION
F.A.I. RT. 80 OVER
DES PLAINES RIVER
WILL COUNTY
SN 099-0056 (EB) & 0057 (WB)

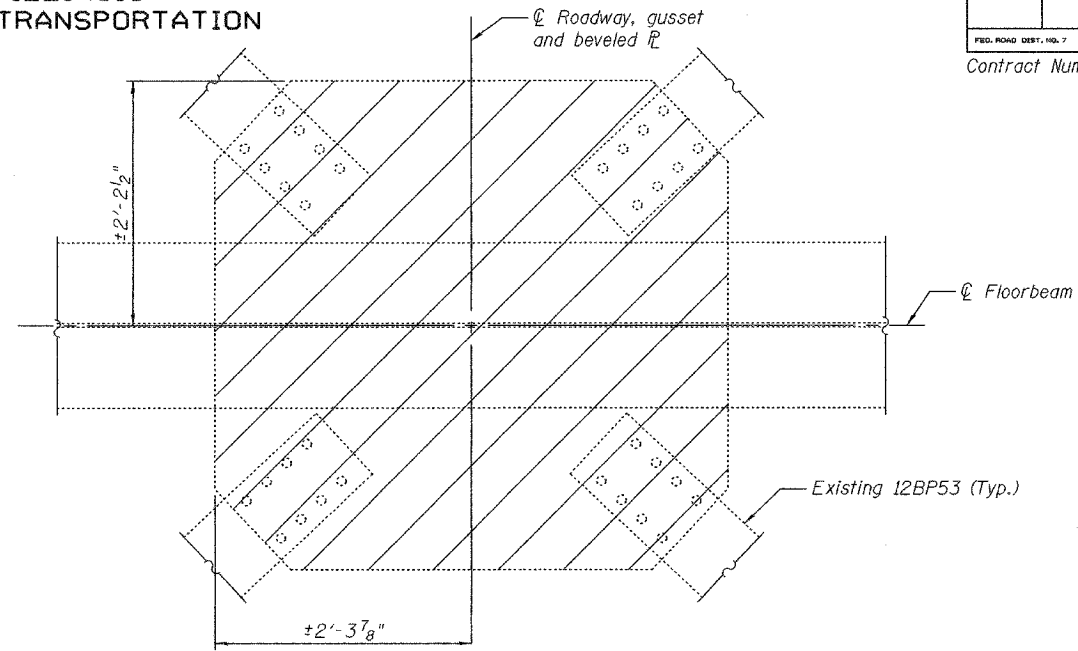
STATE OF ILLINOIS
DEPARTMENT OF TRANSPORTATION

ROUTE NO.	SECTION	COUNTY	LISTED SHEETS	SHEET NO.	SHEET NO. 2 2 SHEETS
		Will	6	5	
FED. ROAD DIST. NO. 7		ILLINOIS		FED. AID PROJECT-	

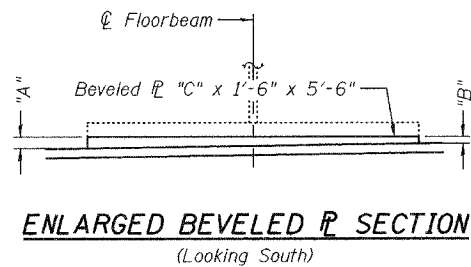
Contract Number: 62967



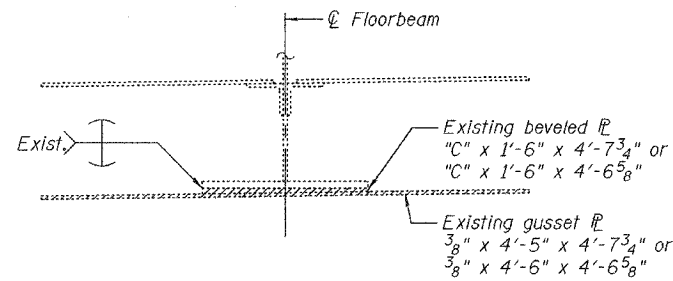
TYPICAL FLOORBEAM ELEVATION
(Looking East)



VIEW A-A
SHOWING REMOVAL



ENLARGED BEVELED FLANGE SECTION
(Looking South)



TYPICAL SECTION
SHOWING GUSSET REMOVAL

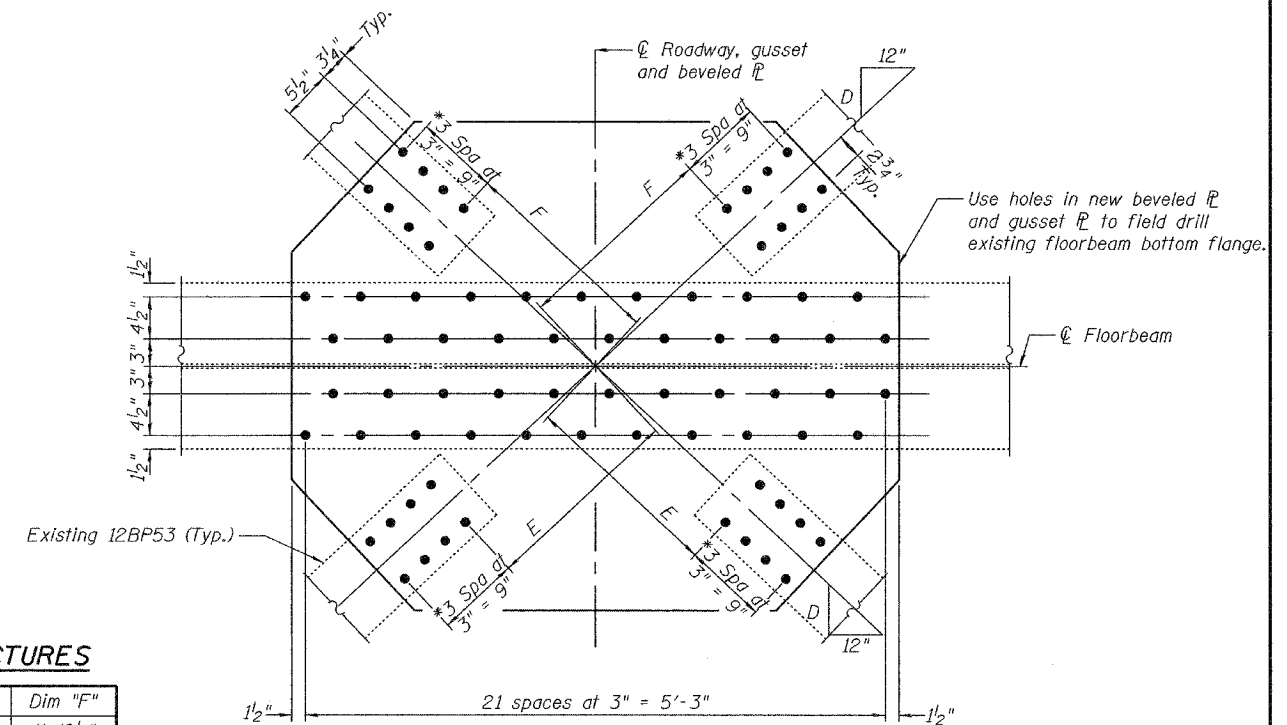
Note:
Grind weld material on floorbeam flange smooth after gusset flange removal.

BEVELED FLANGE DIMENSIONS FOR EASTBOUND AND WESTBOUND STRUCTURES

Location	Dim "A"	Dim "B"	Dim "C"
L1 thru L9	5/8"	3/8"	5/8"
L11	9/16"	7/16"	9/16"
L15	9/16"	1/2"	9/16"
L17 and L19	1/2"	1/2"	1/2"
L21	1/2"	9/16"	9/16"
L25	7/16"	9/16"	9/16"
L27 thru L33	3/8"	5/8"	5/8"

GUSSET FLANGE DIMENSIONS FOR EASTBOUND AND WESTBOUND STRUCTURES

Location	Flange Size	Dim "D"	Dim "E"	Dim "F"
L1 thru L7	3/8" x 4'-5" x 5'-6"	11 3/16"	1'-9 7/8"	1'-10 1/8"
L9	3/8" x 4'-5" x 5'-6"	11 1/4"	1'-9 7/8"	1'-10 1/8"
L11 and L25	3/8" x 4'-5" x 5'-6"	11 1/4"	1'-10"	1'-10"
L15 thru L21	3/8" x 4'-5" x 5'-6"	11 3/16"	1'-10"	1'-10"
L27 thru L33	3/8" x 4'-6" x 5'-6"	11 7/8"	1'-10 1/8"	1'-9 7/8"



NEW GUSSET PLATE DETAIL

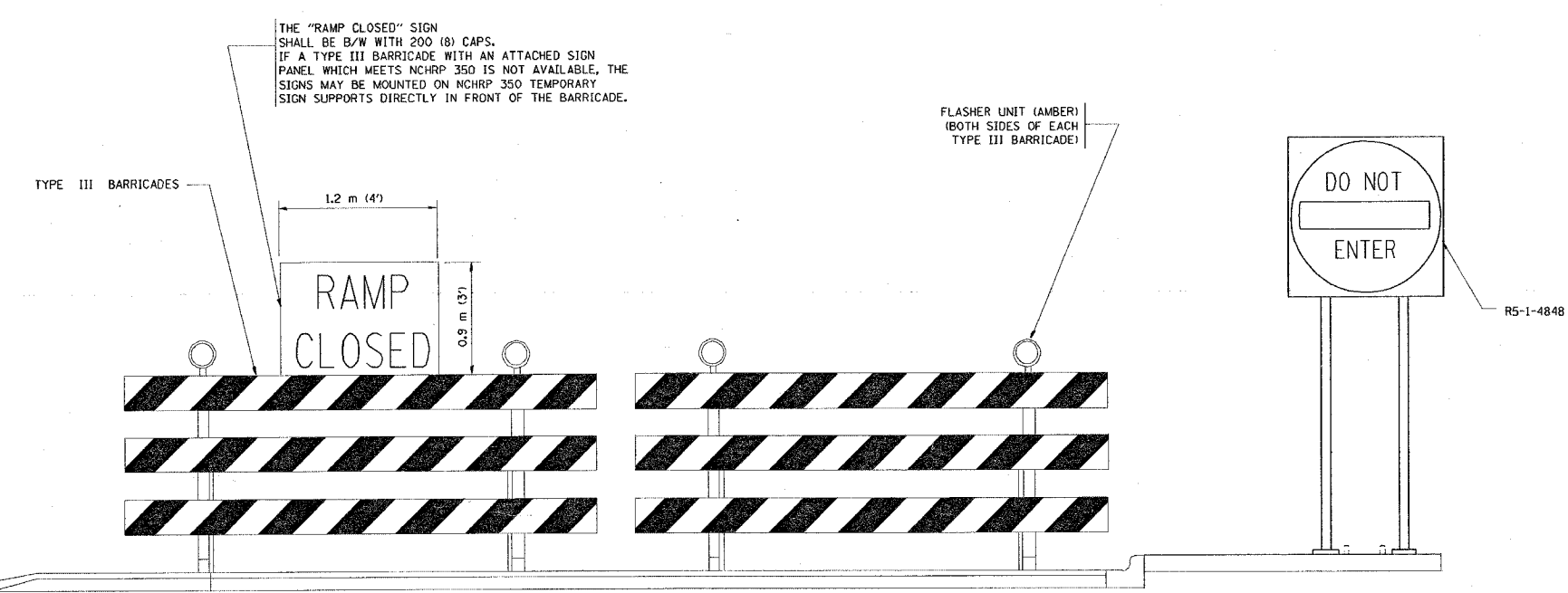
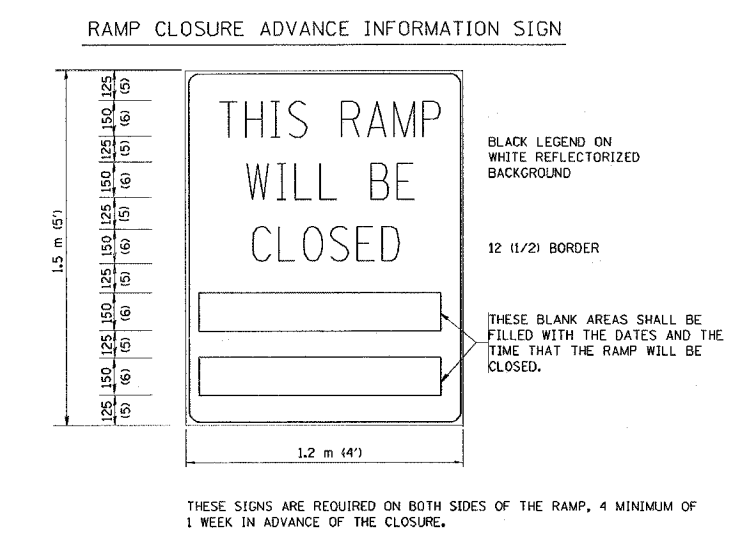
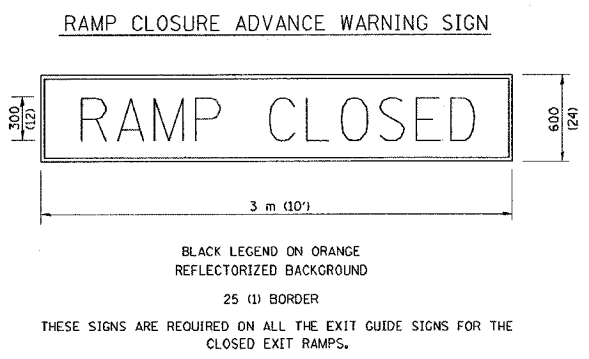
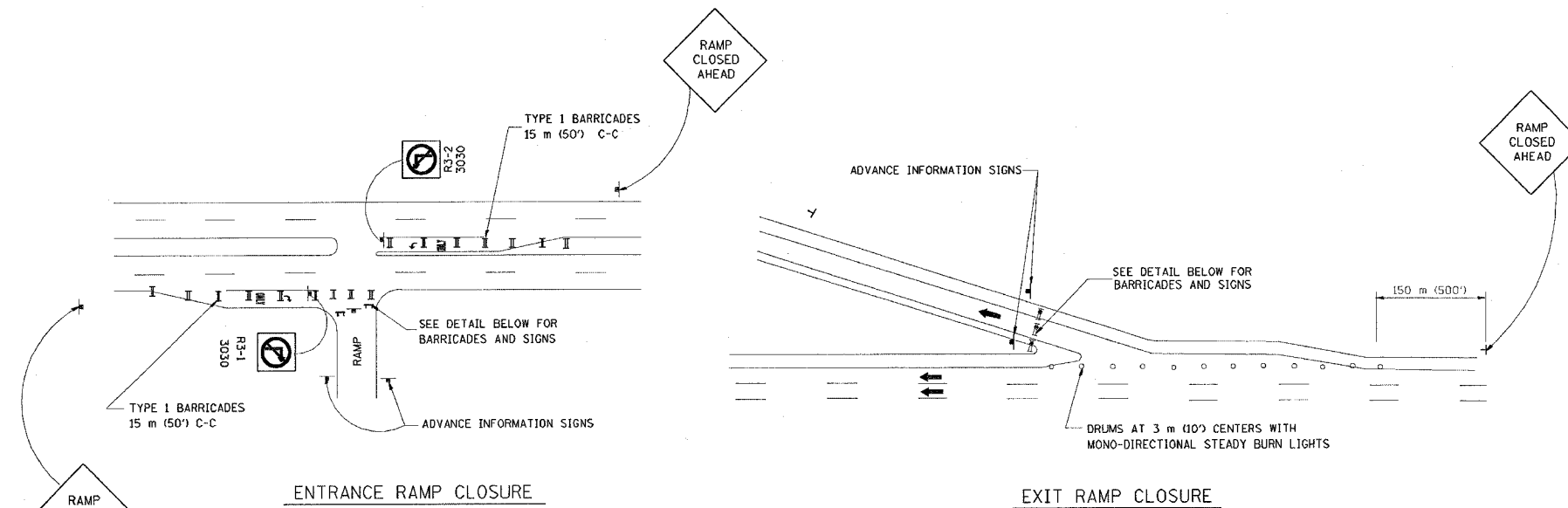
*Use holes in 12BP53 as a template to field drill holes in new gusset flange.

DESIGNED	S.J.B.
CHECKED	V.H.V.
DRAWN	Drew Christopher
CHECKED	S.J.B. V.H.V.

EXAMINED	November 9, 2005
EXAMINED	John A. Morris ENGINEER OF STRUCTURAL SERVICES
PASSED	Ralph E. Anderson ENGINEER OF BRIDGES AND STRUCTURES

STRUCTURAL STEEL REPAIRS
F.A.I. RT. 80 OVER
DES PLAINES RIVER
WILL COUNTY
SN 099-0056 (EB) & 0057 (WB)

F.A. RTE.	SECTION	COUNTY	TOTAL SHEETS	SHEET NO.
90	99-26-BA-1	Will	6	6
STA.	TO STA.			
FED. ROAD DIST. NO.	ILLINOIS	FED. AID PROJECT		
CONTRACT 60967				



- GENERAL NOTES:**
1. CONES MAY BE SUBSTITUTED FOR DRUMS OR TYPE II BARRICADES DURING DAY OPERATIONS. CONES SHALL BE A MINIMUM OF 700 (28) HIGH.
 2. STEADY BURN LIGHTS WILL NOT BE REQUIRED FOR DAY OPERATIONS.
 3. A FLAGGER SHALL BE POSITIONED AT EACH CLOSED RAMP THAT IS OPEN TO CONSTRUCTION VEHICLES.
 4. FOR DAYTIME RAMP CLOSURES, LASTING 6 HOURS OR LESS, THE CONTRACTOR MAY ELIMINATE THE ADVANCE WARNING SIGNS ON THE EXIT GUIDE SIGNS.
 5. ALL ROUTE MARKERS AND TRAILBLAZER ASSEMBLIES WHICH DIRECT MOTORISTS TO A CLOSED ENTRANCE RAMP SHALL BE COVERED.
 6. THE SIGNING AND BARRICADING WHICH IS REQUIRED BY THIS DETAIL SHALL BE CONSIDERED INCIDENTAL TO TRAFFIC CONTROL AND PROTECTION.
 7. AUTHORIZATION FROM THE DISTRICT'S BUREAU OF TRAFFIC IS REQUIRED FOR ALL RAMP CLOSURES.

- NOTES:**
1. CONES MAY BE SUBSTITUTED FOR TYPE I AND TYPE II BARRICADES DURING DAY OPERATIONS. CONES SHALL BE A MINIMUM OF 28" IN HEIGHT.
 2. STEADY BURN LIGHTS WILL NOT BE REQUIRED FOR DAY OPERATIONS.
 3. THE RAMP CLOSURE ADVANCE INFORMATION SIGNS SHALL BE ERCTED IF THE CLOSURE TIME EXCEEDS TWENTY-FOUR (24) HOURS.
 4. ADDITIONAL ADVANCE WARNING SIGNS ON EXIT GUIDE SIGNING WILL BE REQUIRED FOR EXIT RAMP CLOSURES THAT EXCEED TWENTY FOUR (24) HOURS IN LENGTH.

ALL DIMENSIONS ARE IN MILLIMETERS (INCHES) UNLESS OTHERWISE SHOWN.

ILLINOIS DEPARTMENT OF TRANSPORTATION

**FREWAY
ENTRANCE AND EXIT RAMP
CLOSURE DETAILS**

REVISIONS	
NAME	DATE
DWS	2-83
DWS	1/90
DWS	9/94
DWS	12/94
DWS/JAF	12/02
Revise devices to meet NCHRP 350	4/03

SCALE: NONE
DATE: 05/06/2003

DRAWN BY: TC-8
CHECKED BY: TC-8