

F.A.P. RTE.	SECTION	COUNTY	TOTAL SHEETS	SHEET NO.
301	28-SO-M	JO DAVIESS	27	1

STATE OF ILLINOIS  
DEPARTMENT OF TRANSPORTATION  
DIVISION OF HIGHWAYS

**PROPOSED  
HIGHWAY PLANS**

FAP ROUTE 301 (US 20)  
SECTION 28-SO-M

JO DAVIESS COUNTY  
C-92-117-02

PROJECT LOCATION  
LONG HOLLOW SCENIC OVERLOOK

INDEX OF SHEETS

- 1 COVER SHEET, INDEX OF SHEETS, LIST OF STANDARDS
- 2 GENERAL NOTES AND COMMITMENTS
- 3 SUMMARY OF QUANTITIES
- 4-5 TYPICAL SECTIONS
- 6-7 SCHEDULE OF QUANTITIES
- 8-9 HORIZONTAL AND VERTICAL CONTROL
- 10-13 PLAN SHEETS
- 14-18 CONSTRUCTION DETAILS
- 19-27 CROSS SECTIONS

LIST OF STATE STANDARDS

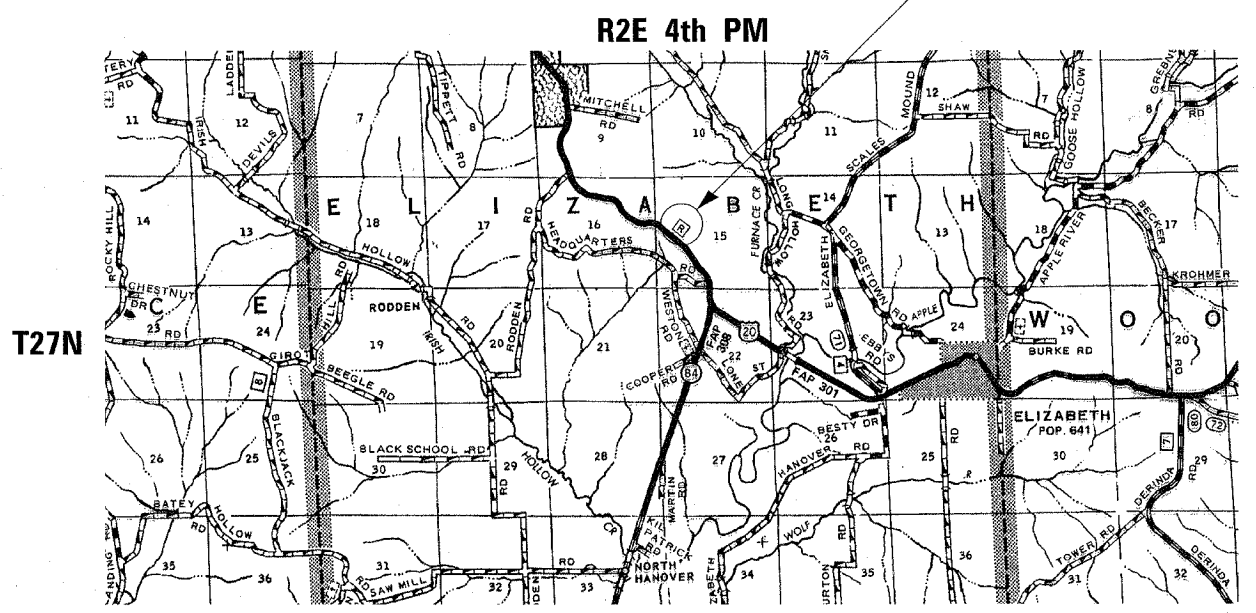
- 000001-04 ABBREVIATIONS, SYMBOLS AND PATTERNS
- 606001-02 CONCRETE CURB TY B AND COMBINATION CONCRETE CURB AND GUTTER
- 424001-04 CURB RAMPS FOR SIDEWALKS
- 442201-01 CLASS C AND D PATCHES
- 720006 SIGN PANEL ERECTION DETAILS
- 720001 SIGN PANEL MOUNTING DETAILS
- 702001-05 TRAFFIC CONTROL DEVICES
- 701301-02 LANE CLOSURE, 2 LN, 2 W, SHORT TIME OPERATIONS
- 701006-02 OFF-ROAD OPERATIONS 2L, 2W, 4.5 M (15') TO 600 MM (24") FROM PAVEMENT EDGE
- 701001-01 OFF-ROAD OPERATIONS 2L, 2W, MORE THAN 4.5 M (15') AWAY
- BLR 10-5 PCC PAVEMENT SPECIAL (NONREINFORCED)

D-92-139-00



LOCATION OF SECTION INDICATED THUS: - [shaded area] -

**MAURER & STUTZ, INC.**  
ENGINEERS SURVEYORS  
7615 N. HARKER DR. PEORIA, IL 61615  
(309) 693-7615  
ILLINOIS PROFESSIONAL DESIGN FIRM CORPORATION NUMBER 184-000177



GROSS PROJECT LENGTH : 2439.54 FT = 0.46 MILES  
NET PROJECT LENGTH : 2439.54 FT = 0.46 MILES



*Rick J. Anderson*  
ILLINOIS REGISTRATION NO. 062-044812  
EXPIRATION DATE: 11/30/2005

STATE OF ILLINOIS  
DEPARTMENT OF TRANSPORTATION  
DIVISION OF HIGHWAYS

SUBMITTED Sept 1 2005  
*Angus Mott*  
DEPUTY DIRECTOR OF HIGHWAYS, REGION ENGINEER

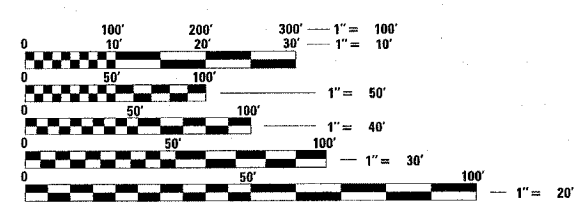
October 14, 2005  
*Mike Niese*  
ENGINEER OF DESIGN AND ENVIRONMENT

October 14, 2005  
*Eric E. Hanel*  
DEPUTY DIRECTOR OF HIGHWAYS, CHIEF ENGINEER

**PRINTED BY THE AUTHORITY  
OF THE STATE OF ILLINOIS**

REGION 2 DISTRICT 2, DIXON, IL

PROJECT ENGINEER : ROBERT WAGNER  
SENIOR ENGINEER : THOMAS HALLA (815) 294-5993  
CONSULTANTS : MAURER-STUTZ, INC.  
CONTACT : RICK ANDERSON (309) 693-7615



FULL SIZE PLANS HAVE BEEN PREPARED USING STANDARD ENGINEERING SCALES. REDUCED SIZED PLANS WILL NOT CONFORM TO STANDARD SCALES. IN MAKING MEASUREMENTS ON REDUCED PLANS, THE ABOVE SCALES MAY BE USED.

J.U.L.I.E.  
JOINT UTILITY LOCATION INFORMATION FOR EXCAVATION  
1-800-892-0123

ELIZABETH TOWNSHIP SECTION 15  
CONTRACT NO. 64611