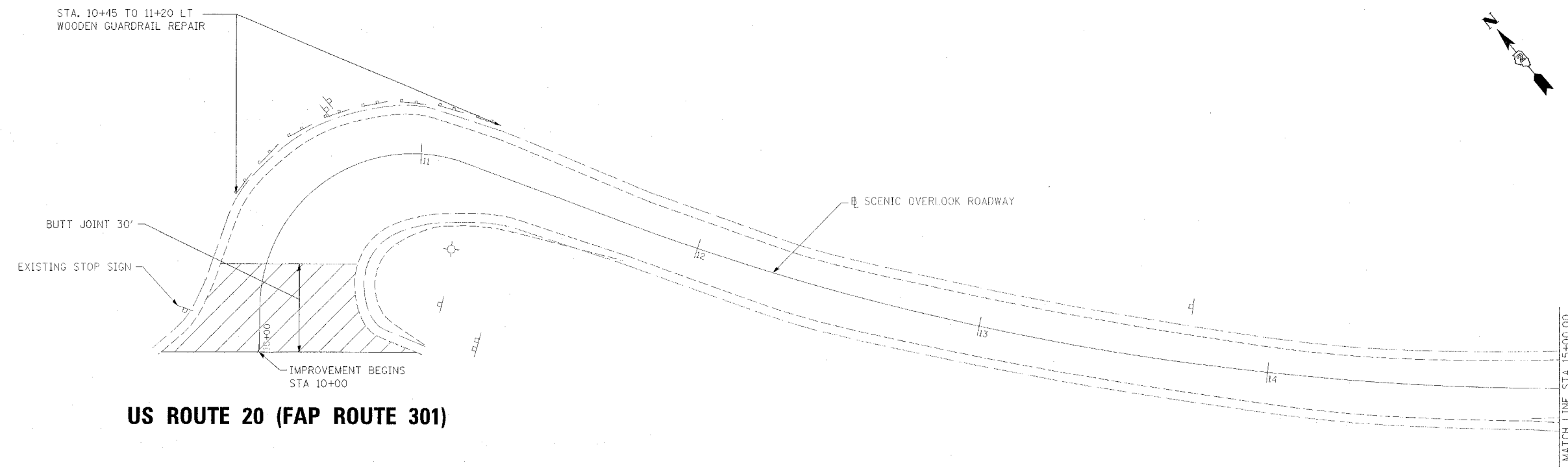


| F.A.P. RTE. | SECTION | COUNTY | TOTAL SHEETS | SHEET NO. |
|---------------------|---------|------------|------------------|-----------|
| 301 | 28-S0-M | JO DAVIESS | 27 | 10 |
| STA. | | TO STA. | | |
| FED. ROAD DIST. NO. | | ILLINOIS | FED. AID PROJECT | |

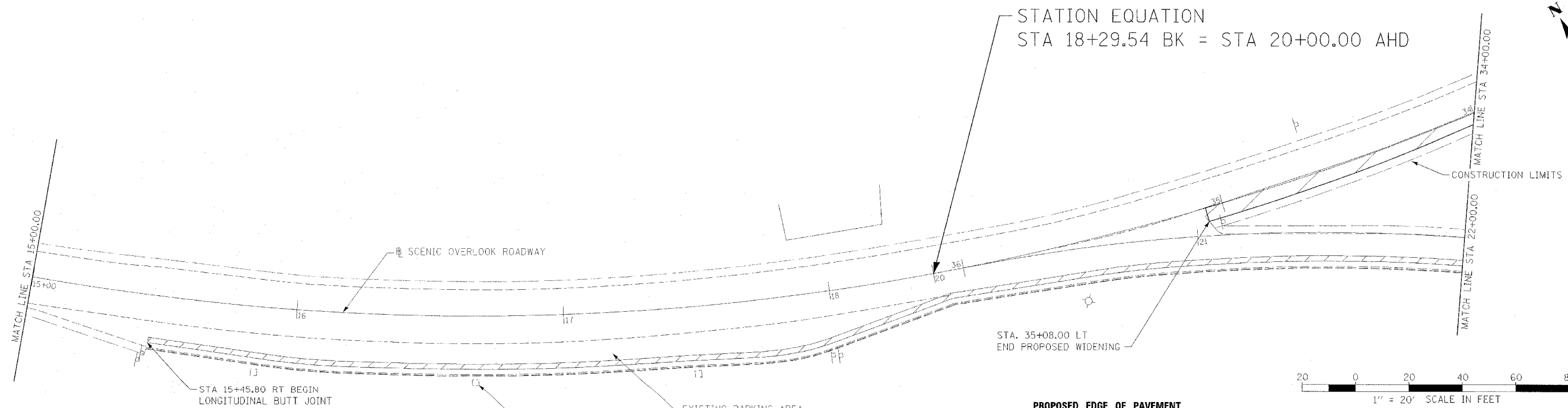


US ROUTE 20 (FAP ROUTE 301)

LEGEND



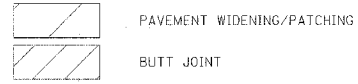
BUTT JOINT



STATION EQUATION
STA 18+29.54 BK = STA 20+00.00 AHD

STA. 35+08.00 LT
END PROPOSED WIDENING

LEGEND

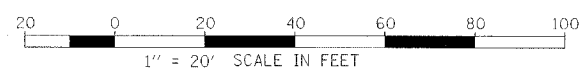


PAVEMENT WIDENING/PATCHING

BUTT JOINT

PROPOSED EDGE OF PAVEMENT STATION/OFFSET

| STA | DIRECTION | OFFSET |
|----------|-----------|--------|
| 34+50.00 | LT | 4.80' |
| 35+00.00 | LT | 5.16' |
| 35+08.00 | LT | 5.16' |



ILLINOIS DEPARTMENT OF TRANSPORTATION

SCENIC OVERLOOK PLAN SHEET 1

REVISIONS

| NAME | DATE |
|------|------|
| | |
| | |
| | |

SCALE: VERT. 1" = 20'
HORIZ. 1" = 20'

DRAWN BY SAM
CHECKED BY RJA

DATE = 08/12/05
FILE NAME = 28-S0-M-10
PLOT SCALE = 1" = 20'
REFERENCE = #REF#