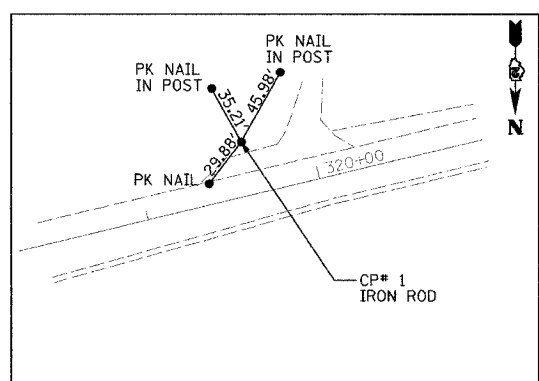
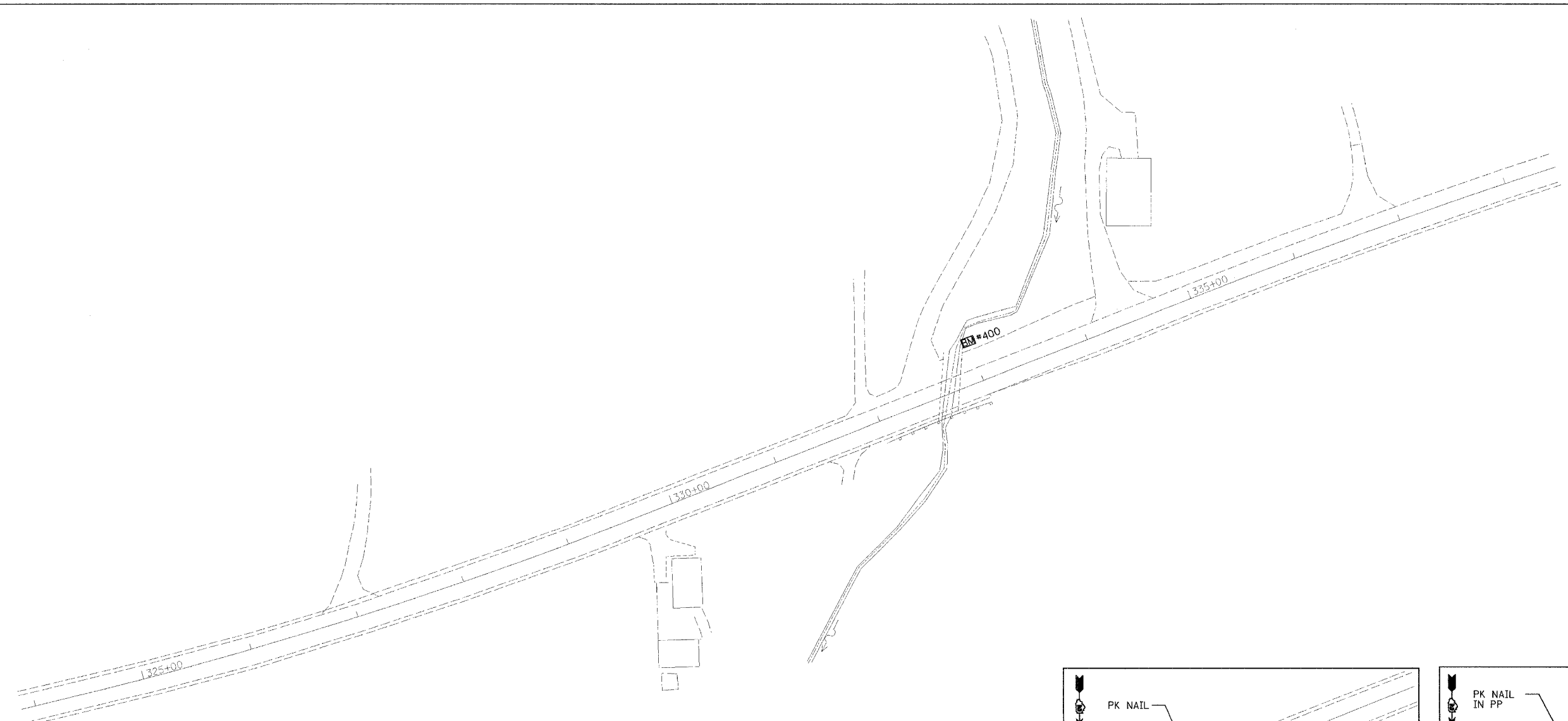


FAP NO.	SECTION	COUNTY	TOTAL SHEETS	SHEET NO.
599	42MFT-T	ROCK ISLAND	90	15
STA. 326+50		TO STA. 336+10		

EXISTING CONDITIONS:  
CONTRACT 64641



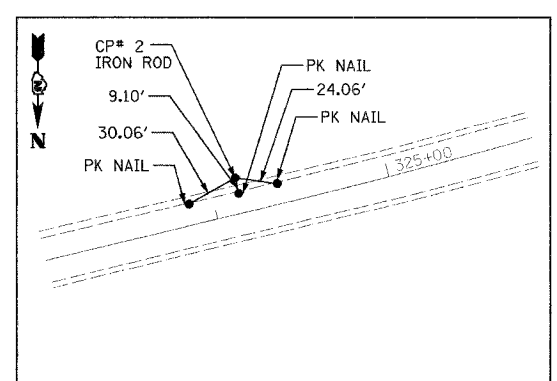
DATE	BY
DATE	BY
DATE	BY
DATE	BY



**CONTROL POINT #1**  
 STA 319+61.77, 30.64 LT  
 N 1740274.38  
 E 2154966.55  
 ELEV. 589.62

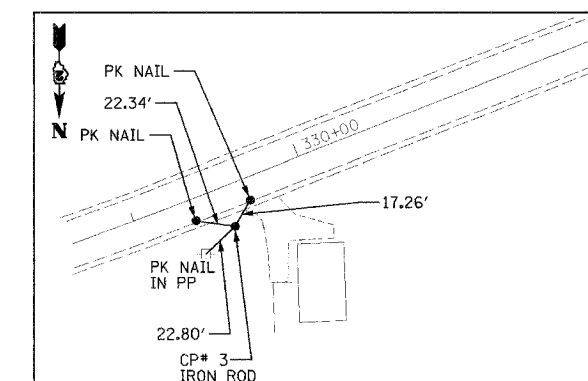
**BENCHMARKS**

BM 400 CUT "□" SOUTH EAST CORNER OF WEST WINGWALL @ SOUTH WEST QUAD OF IL 92 & 85th ST WEST STA. 332+97.0 37.8 LT ELEV. 579.76

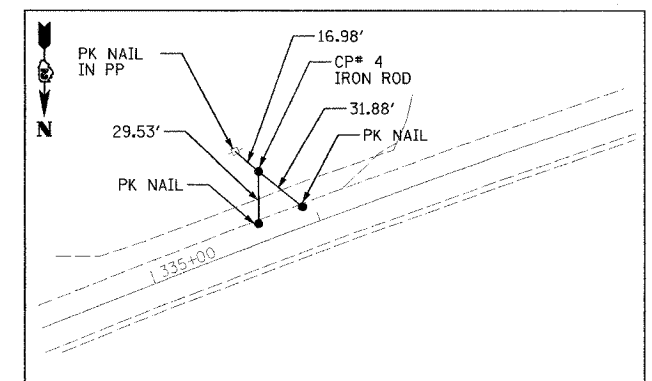


**CONTROL POINT #2**  
 STA 324+15.05, 20.37 LT  
 N 1740178.69  
 E 2154523.33  
 ELEV. 595.51

BM 401 CUT "□" ON SOUTH HEADWALL .2 MILES WEST OF 85th ST WEST STA. 344+60.3 17.9 LT ELEV. 589.23



**CONTROL POINT #3**  
 STA 329+52.68, 23.18 RT  
 N 1740060.24  
 E 2153997.29  
 ELEV. 585.98



**CONTROL POINT #4**  
 STA 335+77.21, 38.46 LT  
 N 1739774.26  
 E 2153438.02  
 ELEV. 589.74

**NOTE:**  
 BASIS OF BEARINGS AND COORDINATES IS ILLINOIS STATE PLANE (NAD83) WEST ZONE. GROUND VALUES SHOWN (COMBINED GRID FACTOR FOR PROJECT AREA 0.999942580). NGS MONUMENTS BUR40-1A & BUR40-1B WERE USED FOR CONTROL.

REVISIONS	
NAME	DATE

ILLINOIS DEPARTMENT OF TRANSPORTATION  
 FAP 599 (IL 92)  
 SECTION 42MFT-T  
 ROCK ISLAND COUNTY  
 ALIGNMENT & TIES  
 BENCHMARKS  
 DRAWN BY: HLC

08/31/2005  
 01:40:53 PM  
 D:\6900atb.dgn