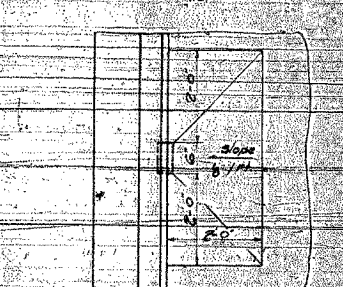
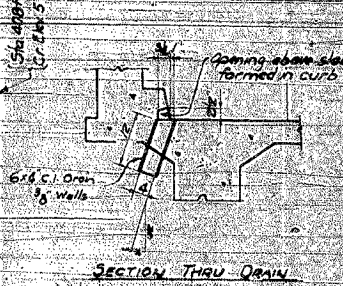
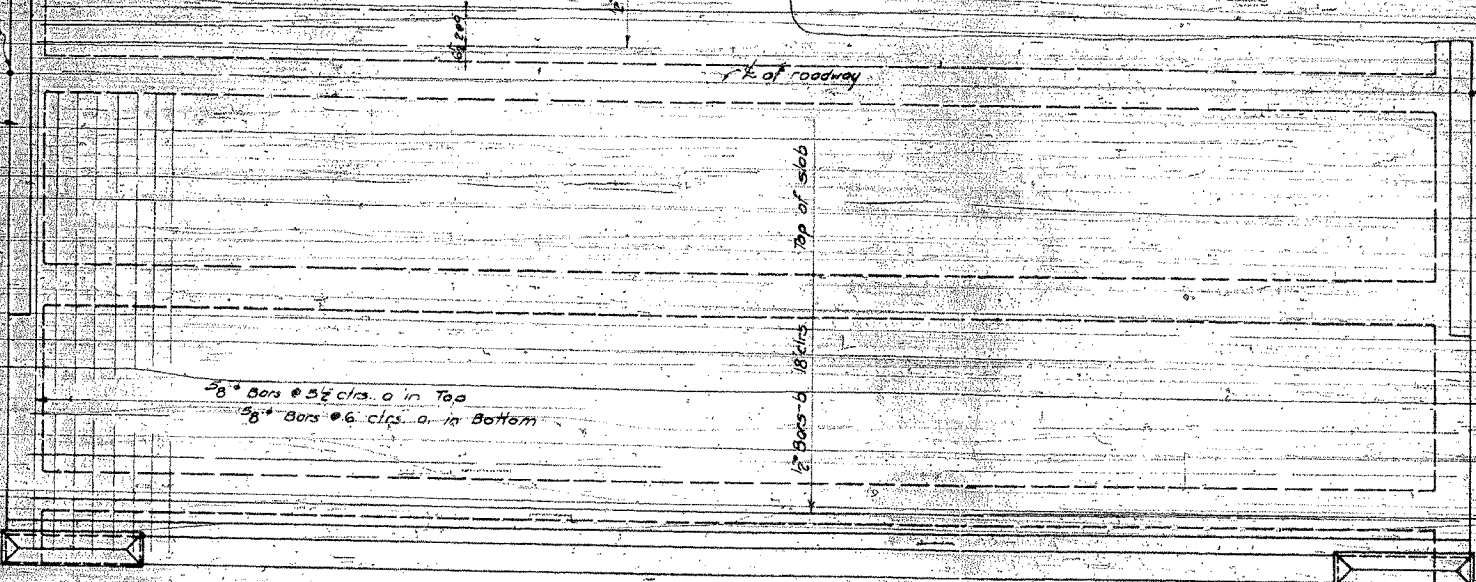
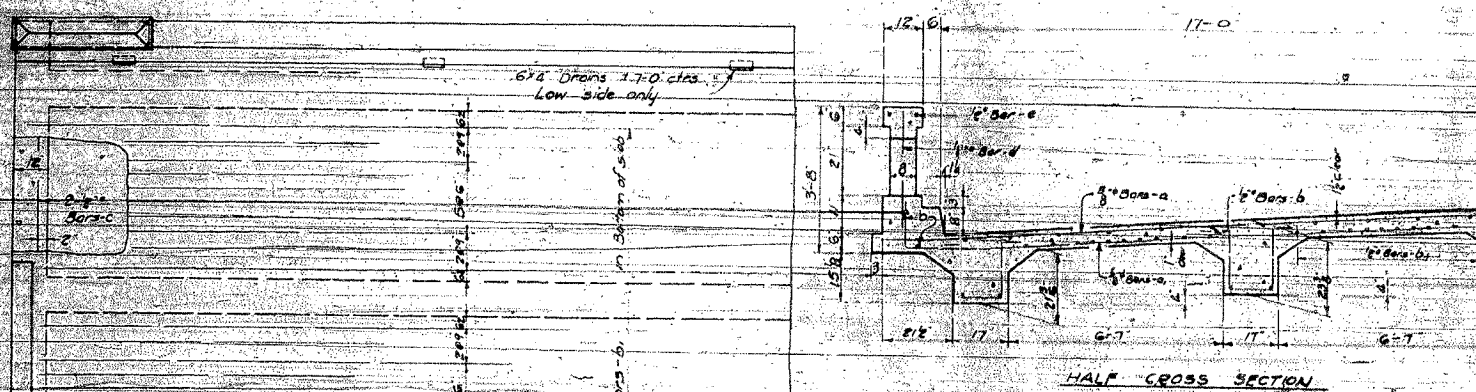
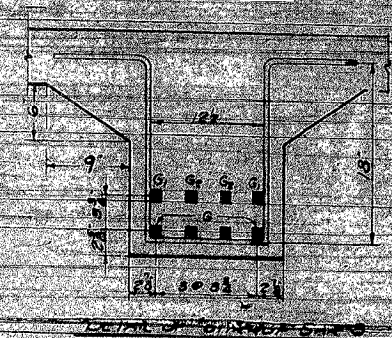
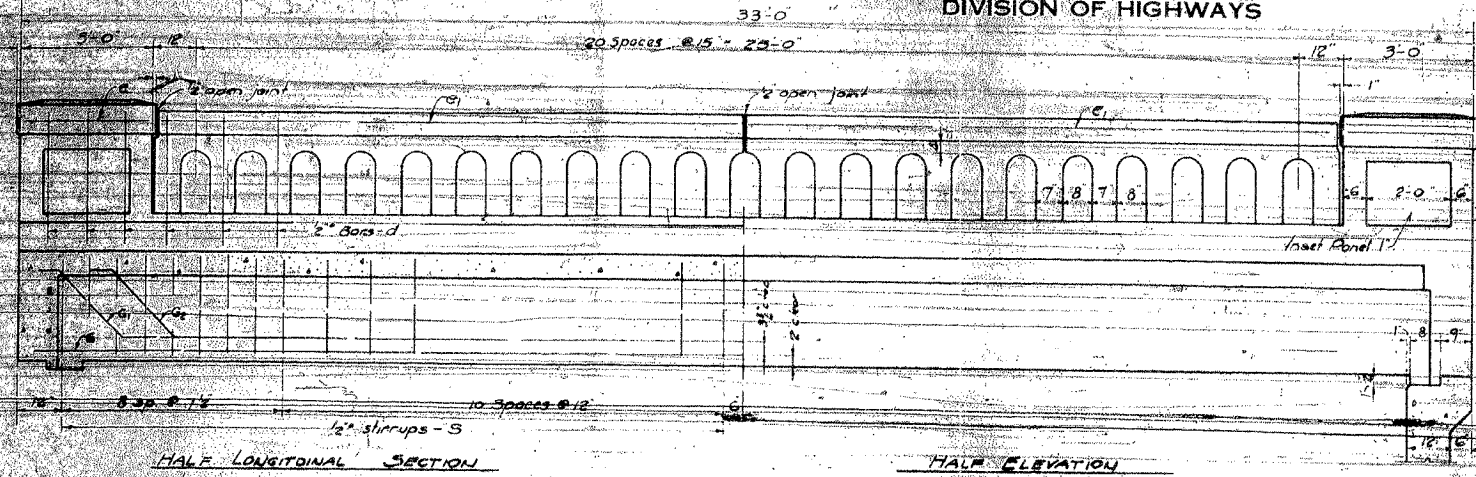


STATE OF ILLINOIS  
DEPARTMENT OF PUBLIC WORKS & BUILDINGS  
DIVISION OF HIGHWAYS

|           |                    |             |              |           |
|-----------|--------------------|-------------|--------------|-----------|
| MAP SHEET | SECTION            | COUNTY      | TOTAL SHEETS | SHEET NO. |
| 599       | 42MFT-BR & 42MFT-T | ROCK ISLAND | 90           | 46        |
| STA.      |                    | TO STA.     |              |           |

EXISTING CONDITIONS:

CONTRACT 64641  
FOR INFORMATION ONLY



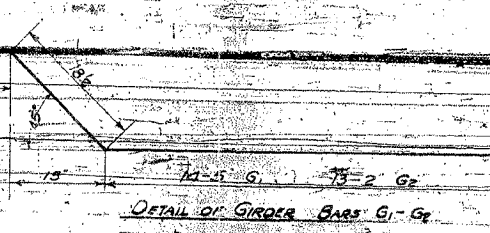
BILL OF MATERIAL

| BAR            | NO. | SIZE | LENGTH |
|----------------|-----|------|--------|
| a              | 70  | 2"   | 19'-3" |
| a <sub>1</sub> | 64  | 2"   | 20'-0" |
| b              | 40  | 1/2" | 16'-9" |
| b <sub>1</sub> | 80  | 1/2" | 16'-9" |
| c              | 8   | 2"   | 19'-0" |
| d              | 56  | 2"   | 3'-0"  |
| e              | 8   | 2"   | 3'-0"  |
| e <sub>1</sub> | 8   | 2"   | 3'-0"  |
| g              | 20  | 1/4" | 32'-6" |
| g <sub>1</sub> | 10  | 1/4" | 32'-9" |
| g <sub>2</sub> | 10  | 1/4" | 30'-3" |
| g <sub>3</sub> | 140 | 1/2" | 6'-0"  |

Class X Concrete - Curb 497  
Handrail Concrete - Curb 36  
Reinforcing Steel - Lbs 12608  
Floor Drains - Each 6  
Slope Plate - Each 1

Use class X concrete throughout.  
Concrete above top of roll base designated as 'Handrail' concrete.  
Aggregate which is to be used in handrails must be absolutely free of chert, flint, lignite, ironite and soft sandstone.  
Reinforcement bars shall be placed and fastened according to Art. 45.3 of 3rd Spec. Concrete. Bars shall be given a rough finish according to Art. 45.3(c) 3rd Specifications.

|          |           |          |                  |
|----------|-----------|----------|------------------|
| COMPUTED | PPR       | EXAMINED | 19-25            |
| STANDARD | CHECKED   | PASSED   | ENTRUST ENGINEER |
|          | DRAWN     | PASSED   | ENTRUST ENGINEER |
|          | CHECKED   | PASSED   | ENTRUST ENGINEER |
| SPECIAL  | ASSEMBLED | APPROVED | ENTRUST ENGINEER |
|          | CHECKED   | APPROVED | ENTRUST ENGINEER |



S.A. ROUTE 9<sup>th</sup> SEC 42-B M.E.T.  
ROCK ISLAND COUNTY  
STA 408+35