

F.A.P. RTE.	SECTION	COUNTY	TOTAL SHEETS	SHEET NO.
517	L-M-3	BOONE	68	1

STATE OF ILLINOIS
DEPARTMENT OF TRANSPORTATION
DIVISION OF HIGHWAYS

**PROPOSED
HIGHWAY PLANS**

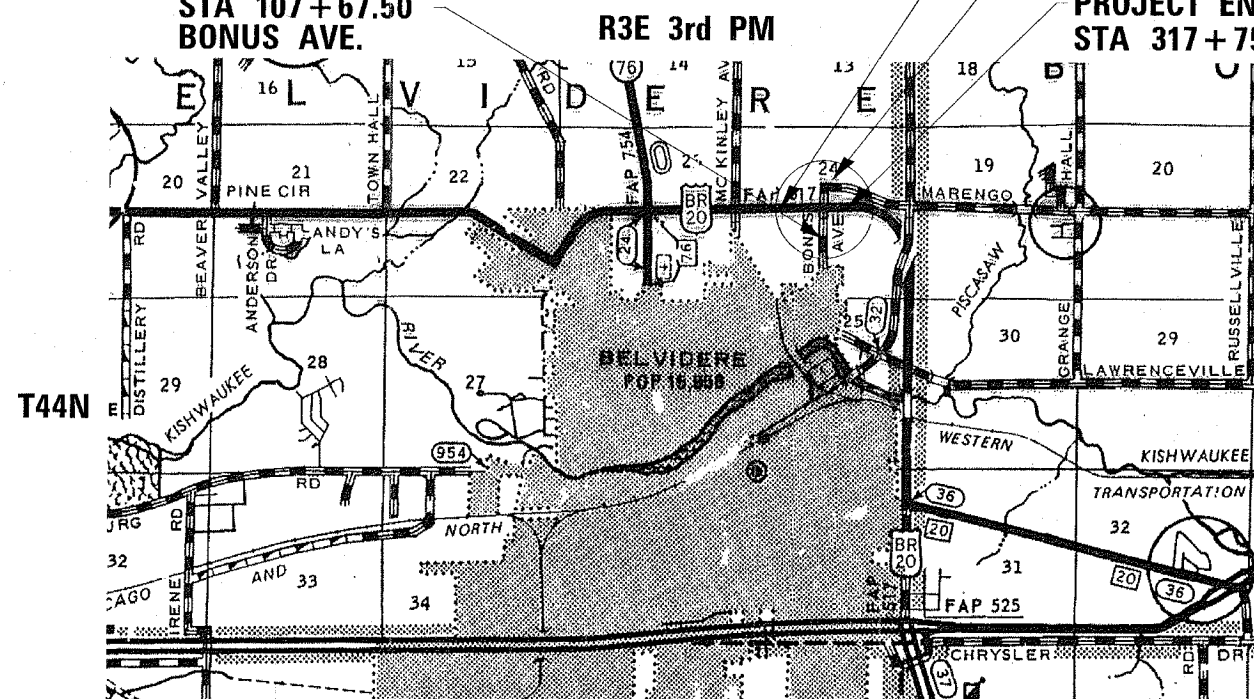
FAP ROUTE 517 (US BR 20)
SECTION L-M-3
PROJECT HS-F-517(052)
BOONE COUNTY
C-92-021-06

PROJECT BEGINS
STA 296+25.56 BUS. RTE. 20

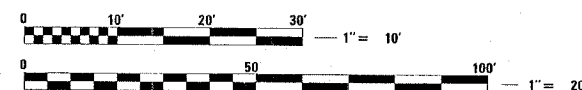
PROJECT ENDS
STA 1014+97.20 MARENGO RD.

PROJECT ENDS
STA 317+75.00 BUS. RTE. 20

PROJECT BEGINS
STA 107+67.50
BONUS AVE.



GROSS PROJECT LENGTH : 2147.41 FT = 0.41 MILES
NET PROJECT LENGTH : 2147.41 FT = 0.41 MILES

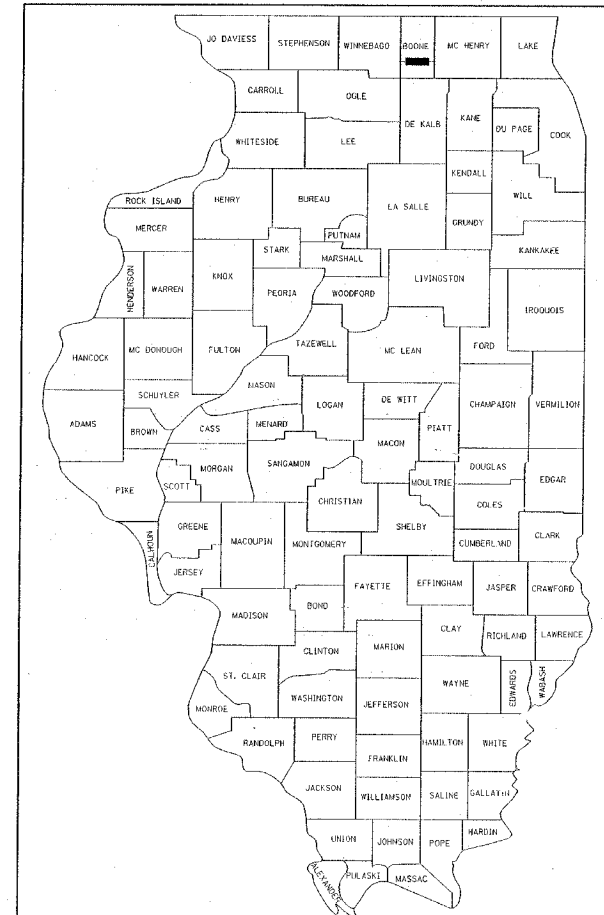


FULL SIZE PLANS HAVE BEEN PREPARED USING STANDARD ENGINEERING SCALES.
REDUCED SIZED PLANS WILL NOT CONFORM TO STANDARD SCALES.
IN MAKING MEASUREMENTS ON REDUCED PLANS, THE ABOVE SCALES MAY BE USED.

FOR INDEX OF SHEETS, SEE SHEET 2

FOR LIST OF STATE STANDARDS, SEE SHEET 2

D-92-048-03



LOCATION OF SECTION INDICATED THIS: -

THESE PLANS WERE PREPARED BY OR UNDER THE DIRECTION OF:

MAURER & STUTZ, INC.
ENGINEERS SURVEYORS
7615 N. HARKER DR. PEORIA, IL 61615
(309) 693-7615

ILLINOIS PROFESSIONAL DESIGN FIRM CORPORATION NUMBER 184-000177

STATE OF ILLINOIS
DEPARTMENT OF TRANSPORTATION
DIVISION OF HIGHWAYS

SUBMITTED OCT 24 2005
Gregory Harts DISTRICT ENGINEER
December 9, 2005
Mike Hines ENGINEER OF DESIGN AND SUPERVISOR
December 9, 2005
Eric Harts DEPUTY DIRECTOR, DIVISION OF HIGHWAYS



Rick J. Anderson
RICK J. ANDERSON, P.E.
IL. REG. NO. 062-044812
EXP. DATE: 11/30/05

PRINTED BY THE AUTHORITY
OF THE STATE OF ILLINOIS

DISTRICT 2, DIXON, IL

PROJECT ENGINEER : ROBERT WAGNER

SENIOR SQUAD LEADER : MICHAEL A. YUSEF (815) 284-5354

CONSULTANTS : MAURER-STUTZ, INC.
CONTACT : RICK ANDERSON (309) 693-7615

DESIGN DESIGNATION:
1865 (26) - OTHER PRINCIPAL ARTERIAL - 0.68 (PCC-20)
SEE TYPICAL SECTIONS SHEET FOR STRUCTURAL PAVEMENT DESIGN INFORMATION

J.U.L.I.E.
JOINT UTILITY LOCATION INFORMATION FOR EXCAVATION
1-800-892-0123

DELVIDERE TOWNSHIP SECTION 24

CONTRACT NO. 64895