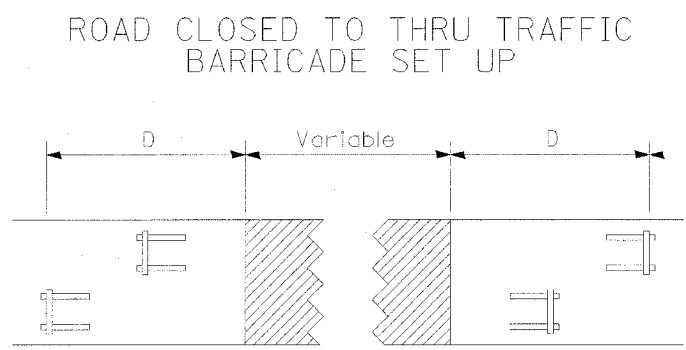
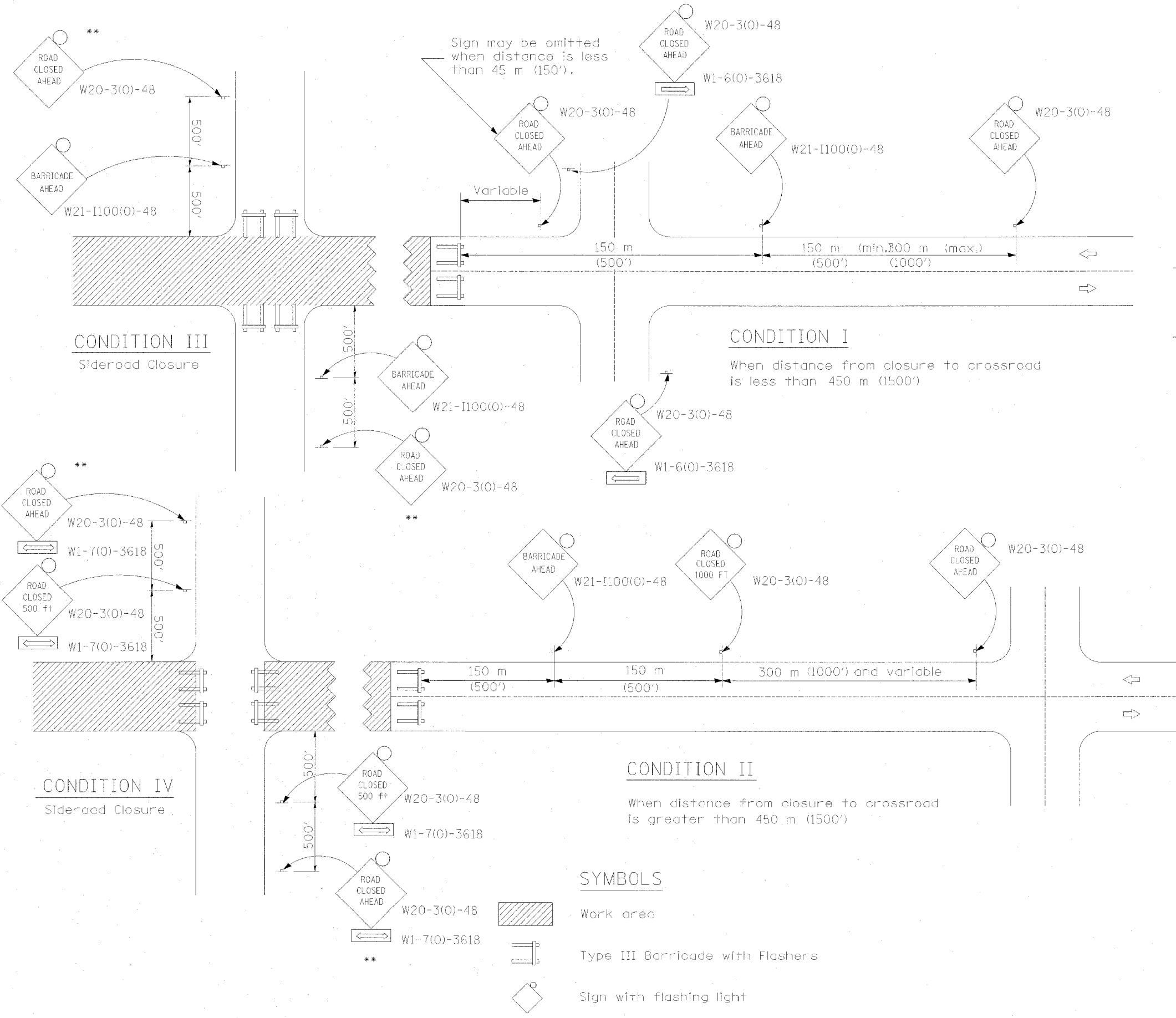


F.A.P. SECTION	COUNTY	TOTAL SHEETS	SHEET NO.
517 L-M-3	BOONE	68	40
STA.	TO STA.		
FED. ROAD DIST. NO.	ILLINOIS	FED. AID PROJECT	



Type III Barricades and R11-4-4830 signs shall be as shown in "Road Closed To All Thru Traffic" detail on Highway Standard 702001. If the distance "D" exceeds 600 m (2000') an additional set of barricades and R11-4-4830 shall be placed at each end of the work area.

GENERAL NOTES

** Where local access is to be maintained, barricades are to be set up as shown above in Road Closed to thru traffic.


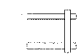
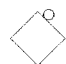
Type III Barricades and R11-2-4830 signs shall be as shown in "Road Closed To All Traffic" detail on Highway Standard 702001.

Longitudinal dimensions may be adjusted to fit field conditions.

When the distance between the barricade and the intersection is between 450 m (1500') and 600 m (2000'), the advance sign shall be placed at the intersection. When the distance between the barricade and the intersection is over 600 m (2000'), an additional sign shall be placed at the intersection. The additional sign shall give the distance to the barricade in miles or fractions of a mile.

All dimensions are in millimeters (inches) unless otherwise shown.

SYMBOLS

-  Work area
-  Type III Barricade with Flashers
-  Sign with flashing light

PLOT DATE = 8/2/05
 FILE NAME = #FILEL#
 PLOT SCALE = #SCALE#
 REFERENCE = #REF#