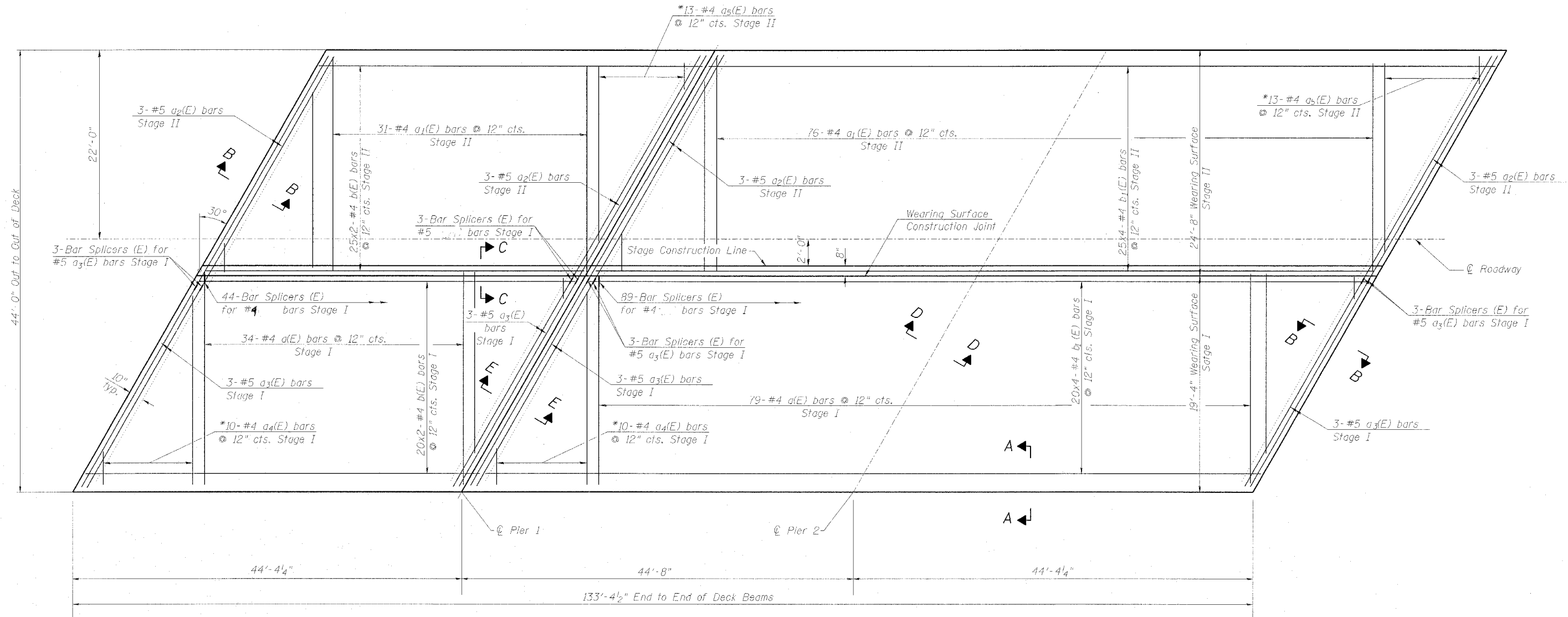




MIN. BAR LAP

#4 Bar = 1'-4"

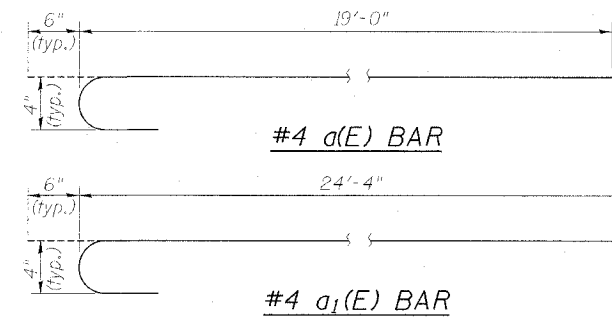
* Order bars full length and cut in field to fit skew.
Use remainder of bars at opposite end of spans
on same side of stage construction line



WEARING SURFACE PLAN

Notes:

Reinforcement bars designated (E) shall be epoxy coated.
For section details, See sheet 7 of 16.
Bars indicated thus 3x2-#5 etc, indicates 3 lines of bars with 2 lengths per line.



DESIGNED	BAS
CHECKED	KEF & RJA
DRAWN	
CHECKED	

SUPERSTRUCTURE DETAILS
IL 78 OVER MUD CREEK
F.A.P. RTE. 22 - SECTION 127BR-1
HENRY COUNTY
STA. 542+78.43 - STR. NO. 037-0125