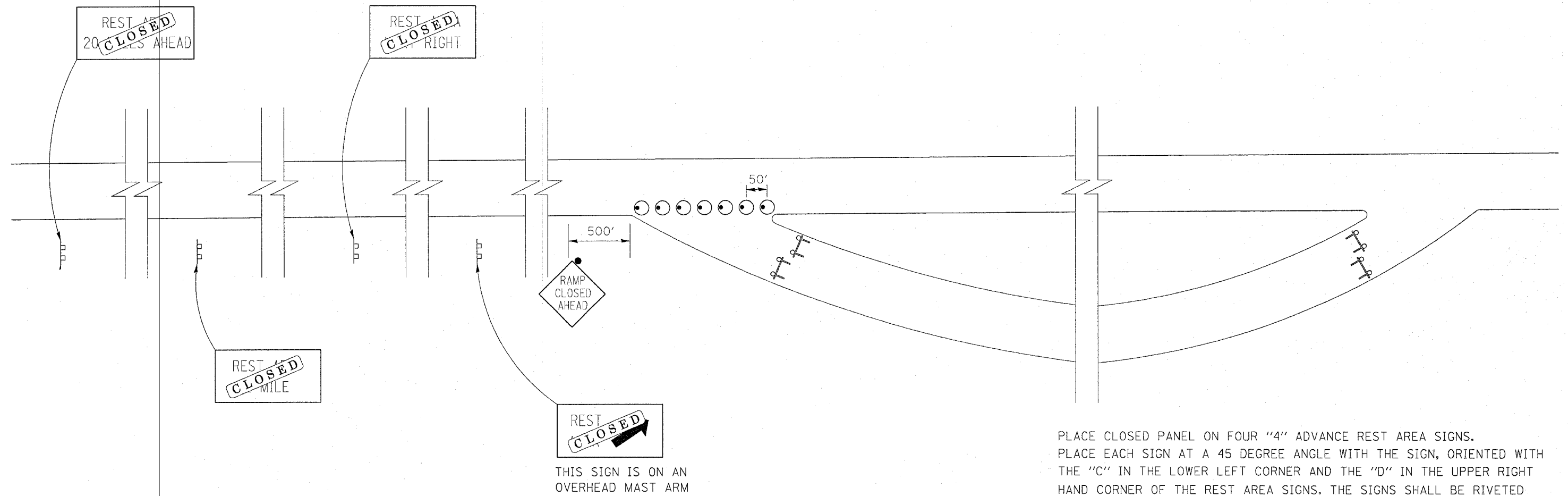


F.A. RTE.	SECTION	COUNTY	TOTAL SHEETS	SHEET NO.
I-80	06-4RA-M	BUREAU	14	13
STA.		TO STA.		
FED. ROAD DIST. NO.	ILLINOIS	FED. AID PROJECT		

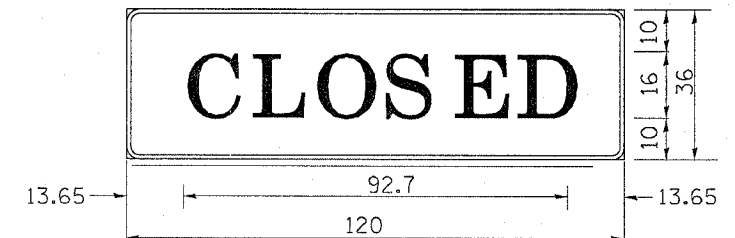
# TRAFFIC CONTROL FOR ROAD CLOSURE



PLACE CLOSED PANEL ON FOUR "4" ADVANCE REST AREA SIGNS. PLACE EACH SIGN AT A 45 DEGREE ANGLE WITH THE SIGN, ORIENTED WITH THE "C" IN THE LOWER LEFT CORNER AND THE "D" IN THE UPPER RIGHT HAND CORNER OF THE REST AREA SIGNS. THE SIGNS SHALL BE RIVETED TO THE REST AREA SIGNS OR ATTACHED WITH SELF-TAPPING SHEET METAL SCREWS.

- DRUM/TYPE II BARRICADE WITH STEADY BURN LIGHT
- ⊥ TYPE III BARRICADES
- SIGN

WESTBOUND REST AREA SHALL USE THE SAME TRAFFIC CONTROL.  
PLEASE CALL RICH MAGGI, I.D.O.T. LANDSCAPE ARCHITECT AT (815)284-5404 TWO WEEKS PRIOR TO CLOSING EACH RAMP.



3.00" RADIUS, 1.00" BORDER, BLACK ON ORANGE; [CLOSED] E MOD; TABLE OF WIDTHS AND SPACES.

13.65	C	12.75	3.30	L	11.88	3.30	O	13.38	3.30	S	12.75	4.11	E	11.88	3.30	D	12.75	13.65
-------	---	-------	------	---	-------	------	---	-------	------	---	-------	------	---	-------	------	---	-------	-------