

F.A.I. RTE.	SECTION	COUNTY	TOTAL SHEETS	SHEET NO.
I-80	06-4RA-M	BUREAU	14	1

STATE OF ILLINOIS  
DEPARTMENT OF TRANSPORTATION  
DIVISION OF HIGHWAYS

**PROPOSED  
HIGHWAY PLANS**

F.A.I. 80 (I-80)  
SECTION 06-4RA-M (PAVEMENT)

BUREAU COUNTY  
C 92-024-06

INDEX OF SHEETS

- 1 COVER SHEET & INDEX OF SHEETS AND STANDARDS
- 2 SUMMARY OF QUANTITIES
- 3 GENERAL NOTES
- 4 SCHEDULE OF QUANTITIES
- 5 CLASS B PATCHING SCHEDULE
- 6-8 EASTBOUND PLAN SHEETS
- 9-11 WESTBOUND PLAN SHEETS
- 12 INLETS, SPECIAL, NO. 7 DETAIL
- 13 TRAFFIC CONTROL FOR ROAD CLOSURE DETAIL
- 14 SUBGRADE REPLACEMENT (DIST STD 97.4)

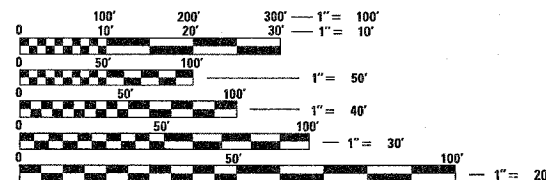
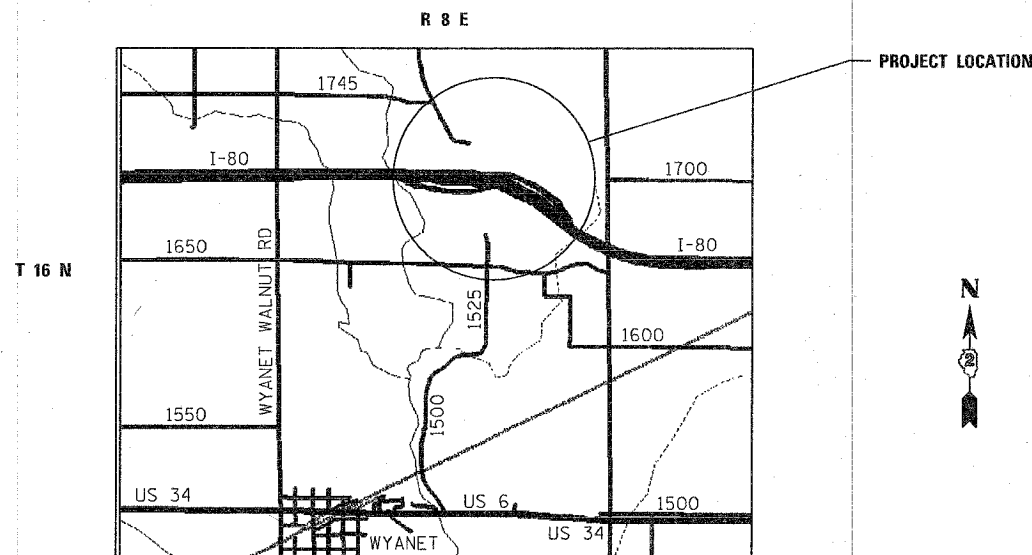
STATE STANDARDS

- 000001-04 STANDARD SYMBOLS, ABBREVIATIONS, AND PATTERNS
- 001001 AREAS OF REINFORCEMENT BARS
- 001006 DECIMAL OF AN INCH AND OF A FOOT
- 420001-06 PAVEMENT JOINTS
- 420701-01 PAVEMENT FABRIC
- 442101-05 CLASS B PATCHES
- 701101-01 OFF-ROAD OPERATIONS, MULTILANE, 15' TO 24" FROM EDGE OF PAVEMENT
- 702001-05 TRAFFIC CONTROL DEVICES
- 780001-01 TYPICAL PAVEMENT MARKINGS

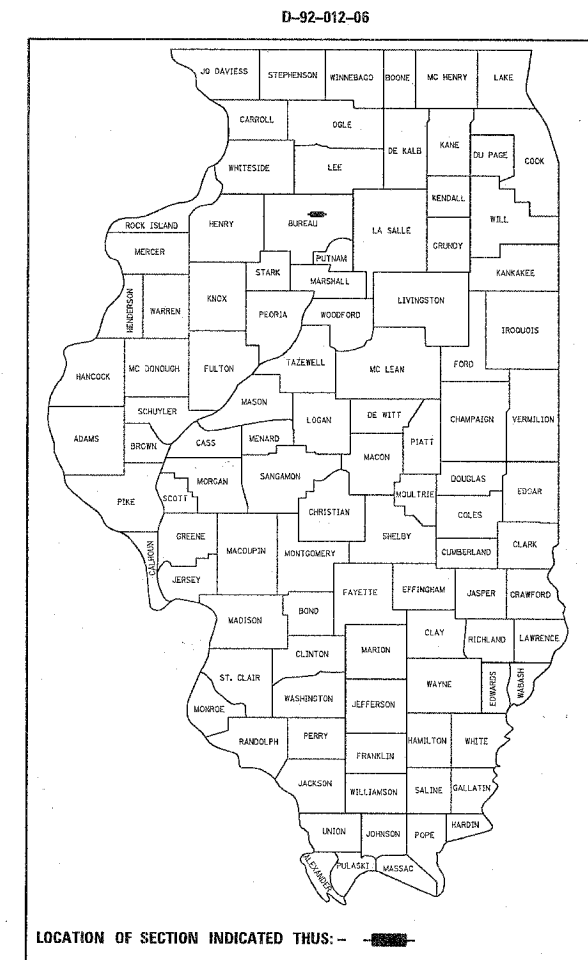
WYANET TOWNSHIP, SECTIONS 9, 10

J.U.L.I.E.  
JOINT UTILITY LOCATION INFORMATION FOR EXCAVATION  
1-800-892-0123

CONTRACT NO. 64B91



FULL SIZE PLANS HAVE BEEN PREPARED USING STANDARD ENGINEERING SCALES. REDUCED SIZED PLANS WILL NOT CONFORM TO STANDARD SCALES. IN MAKING MEASUREMENTS ON REDUCED PLANS, THE ABOVE SCALES MAY BE USED.



LOCATION OF SECTION INDICATED THUS: [Symbol]

STATE OF ILLINOIS  
DEPARTMENT OF TRANSPORTATION  
DIVISION OF HIGHWAYS

SUBMITTED October 26, 2005  
Gregory L. Mount  
DEPUTY DIRECTOR OF HIGHWAYS, REGION ENGINEER

December 9, 2005  
Mike Hine  
ENGINEER OF DESIGN AND ENVIRONMENT

December 9, 2005  
Eric Harn  
DEPUTY DIRECTOR OF HIGHWAYS, CHIEF ENGINEER

**PRINTED BY THE AUTHORITY  
OF THE STATE OF ILLINOIS**

F.A.I. RTE.	SECTION	COUNTY	TOTAL SHEETS	SHEET NO.
I-80	06-4RA-M	BUREAU	14	2
STA.		TO STA.		
FED. ROAD DIST. NO.	ILLINOIS	FED. AID PROJECT		

SUMMARY OF QUANTITIES

CODE NUMBER	ITEM	UNITS	URBAN
			100% STATE ROADWAY Y021
20800150	TRENCH BACKFILL	CU. YD.	98
42001200	PAVEMENT FABRIC	SQ. YD.	278
44213200	SAW CUTS	FOOT	662
50100300	REMOVAL OF EXISTING STRUCTURES NO. 1	EACH	6
60242803	INLETS, SPECIAL, NO. 7	EACH	6
67100100	MOBILIZATION	L. SUM	1
Z0017100	DOWEL BARS	EACH	229
Z0028415	GEOTECHNICAL REINFORCEMENT	SQ. YD.	278
Z0028700	GRANULAR SUBGRADE REPLACEMENT	CU. YD.	46
Z0075300	TIE BARS	EACH	208
X4420182	CLASS B PATCHES, TYPE III, 10 1/2 INCH	SQ. YD.	104
X4420184	CLASS B PATCHES, TYPE IV, 10 1/2 INCH	SQ. YD.	278
X7013015	TRAFFIC CONTROL FOR ROAD CLOSURE	L. SUM	1

PLOT DATE = Wed Oct 26 09:29:12 2005  
 FILE NAME = C:\projects\201206\sum.dgn  
 PLOT SCALE = 50.0000 / 1 IN.  
 USER NAME = polzinej

REVISIONS	
NAME	DATE

ILLINOIS DEPARTMENT OF TRANSPORTATION

SUMMARY OF QUANTITIES

SCALE: VERT.  
 DATE

DRAWN BY  
 CHECKED BY

# GENERAL NOTES

ROUTE NO.	SEC.	COUNTY	TOTAL SHEETS	SHEET NO.
FAI 80 (I-80)	06-4RA-M (Pavement)	Bureau	14	3
FED ROAD DIST. NO.	ILLINOIS	PROJECT		

Contract #64B91

Closed expansion joints on jointed pavements shall be re-established during the patching operations. Class B Patches - when the pavement requires patching at the location of the expansion joint, a new joint should be established using a dowelled expansion patch as shown on Highway Standard 442101. When the joint is closed, but does not require patching, an expansion joint may be formed by sawing the pavement and filling the saw cut with a preformed expansion joint filler meeting the requirements of Section 1051 of the Standard Specifications as shown on Standard 420001.

All mandatory joint sealing for Class B patches as shown on the plans will not be measured for payment. Optional sawing of the joint for the sealant reservoir will not be measured for payment.

For all concrete patching that will not be resurfaced, the concrete shall be struck off flush with the existing pavement surface at each end of the patch.

The Engineer reserves the right to check all patches for smoothness by the use of a 10' rolling straight edge set to a 3/16" tolerance in the wheel paths. Any patch areas higher than 3/16" must be ground smooth with an approved grinding device consisting of multiple saws. The use of bushhammer or other impact devices will not be permitted. Any patch with depressions greater than 3/16" shall be repaired in a manner approved by the Engineer.

The mandatory saw cuts for pavement patching are:

Class B Patch: Cut two transverse saw cuts outlining the patch and one transverse pressure relief saw cut. The longitudinal edges of the patch shall be cut full depth. When the patch is adjacent to a pcc shoulder, two saw cuts along the shoulder will be required.

The mandatory saw cuts will be paid for at the contract unit price per Meter (Foot) for SAW CUTS.

Cost of removal and disposal of material from the temporary patch shall be included in CLASS B PATCHES of the type and size specified in the plans.

All grates of drainage structures to be removed or filled shall be carefully salvaged and shall remain the property of I.D.O.T.

The Contractor shall be responsible for protecting utility property during construction operations as outlined in Article 107.31 of the Standard Specifications. A minimum of 48 hours advance notice is required for non-emergency work. The JULIE number is 800-892-0123. The following listed utilities located within the project limits or immediately adjacent to the project construction limits are members of JULIE:

Verizon

Corn Belt Energy Corp.

Tie bars shall be installed to tie PCC appurtenance to adjacent existing concrete pavement.

Tie the following to the existing concrete pavement Length, size, and spacing of Tie Bars

Gutter or Curb & Gutter Std. 606001 600 mm (24") long No. 20 (No. 6) @ 600 mm (24") centers

Tie bars to be installed in accordance with the applicable portions of Article 420.10(b) of the Standard Specifications. See Highway Standard 420001 for detail on longitudinal construction joint grouted-in-place tie bar. The cost of the tie bars to be included in the cost of the PCC appurtenance adjacent to the existing pavement.

CADD data will be available to Contractors and Consultants working on this project. This information will be provided upon request as MicroStation CADD files and Geopak coordinate geometry files ONLY. If data is required in other formats it will be your responsibility to make these conversions. If any discrepancy or inconsistency arises between the electronic data and the information on the hard copy, the information on the hard copy should be used. Contact the District's Project Engineer to request these files.

Program #5  
(Arch. Size)  
Enlarge  
200%  
Enlarge 107%

F.A.I. RTE.	SECTION	COUNTY	TOTAL SHEETS	SHEET NO.
I-80	06-4RA-M	BUREAU	14	4
STA.		TO STA.		
FED. ROAD DIST. NO.	ILLINOIS	FED. AID PROJECT		

SCHEDULE OF QUANTITIES

20800150 TRENCH BACKFILL

CU. YD.	LOCATION	REMARKS
16.4	Sta. 602+93.0 TO 603+10.0	EB truck parking
16.4	Sta. 604+13.0 TO 604+30.0	EB truck parking
16.4	Sta. 605+13.0 TO 605+30.0	EB truck parking
16.4	Sta. 402+83.0 TO 403+00.0	WB truck parking
16.4	Sta. 404+64.0 TO 404+81.0	WB truck parking
16.4	Sta. 405+83.0 TO 406+00.0	WB truck parking
<u>98.4</u>	TOTAL	

50100300 REMOVAL OF EXISTING STRUCTURES NO. 1

EACH	LOCATION	REMARKS
1	Sta. 602+93.0 TO 603+10.0	EB truck parking
1	Sta. 604+13.0 TO 604+30.0	EB truck parking
1	Sta. 605+13.0 TO 605+30.0	EB truck parking
1	Sta. 402+83.0 TO 403+00.0	WB truck parking
1	Sta. 404+64.0 TO 404+81.0	WB truck parking
1	Sta. 405+83.0 TO 406+00.0	WB truck parking
<u>6</u>	TOTAL	

60242803 INLETS, SPECIAL NO. 7

EACH	LOCATION	REMARKS
1	Sta. 602+93.0 TO 603+10.0	EB truck parking
1	Sta. 604+13.0 TO 604+30.0	EB truck parking
1	Sta. 605+13.0 TO 605+30.0	EB truck parking
1	Sta. 402+83.0 TO 403+00.0	WB truck parking
1	Sta. 404+64.0 TO 404+81.0	WB truck parking
1	Sta. 405+83.0 TO 406+00.0	WB truck parking
<u>6</u>	TOTAL	

PLOT DATE = Wed Oct 26 09:20:12 2005  
 FILE NAME = E:\projects\64B91\20800150.dgn  
 PLOT SCALE = 50.0000 / IN.  
 USER NAME = poltrng

REVISIONS		ILLINOIS DEPARTMENT OF TRANSPORTATION
NAME	DATE	
		SCHEDULE OF QUANTITIES

SCALE: VERT. / HORIZ.  
 DATE:                      DRAWN BY:                      CHECKED BY:

F.A.I. RTE.	SECTION	COUNTY	TOTAL SHEETS	SHEET NO.
I-80	06-4RA-M	BUREAU	14	5
STA.		TO STA.		
FED. ROAD DIST. NO.	ILLINOIS	FED. AID PROJECT		

CLASS B PATCHING

STATION	LOCATION	TYPE	THICKNESS (in)	SQ. YD.	OFFSET OF PATCH		AREA OF PATCHES		SAWING (feet)	DOWEL BARS (each)	TIE BARS (each)	PAVEMENT FABRIC (sq yd)	GEO. REINF. (sq yd)	GRAN. SUBGRADE REPL. (cu. yd)
					LT (feet)	RT (feet)	TYPE 3 (sq yd)	TYPE 4 (sq yd)						
<b>EAST BOUND REST AREA</b>														
851+61 to 852+25	EB off ramp - truck driving lane to parking lot	Concrete	10.5	114.0	-	-		114.0	176	32	50	114.0	114.0	19.00
700+00 to 700+31	EB off ramp - truck driving lane to parking lot	Concrete	10.5	56.0	-	-		56.0	16	32	24	56.0	56.0	9.33
602+90 to 603+13	EB truck parking - around inlet	Concrete	10.5	17.0	104	-	17.0		73	16	18			
604+10 to 604+33	EB truck parking - around inlet	Concrete	10.5	17.0	104	-	17.0		73	16	18			
605+10 to 605+34	EB truck parking - around inlet	Concrete	10.5	17.0	104	-	17.0		73	16	18			
<b>WESTBOUND REST AREA</b>														
402+82 to 403+03	WB truck parking - around inlet	Concrete	10.5	17.0	-	4	17.0		73	16	18			
404+63 to 404+84	WB truck parking - around inlet	Concrete	10.5	17.0	-	4	17.0		73	16	18			
405+82 to 406+05	WB truck parking - around inlet	Concrete	10.5	19.0	-	4	19.0		75	16	20			
406+05 to 406+35	WB truck parking lot	Concrete	10.5	108.0	16	-		108.0	30	69	24	108.0	108.0	18.00
10.5 INCH CLASS B PATCHES =							104.0	278.0	662.0	229.0	208.0	278.0	278.0	46.3

PLOT DATE = Wed Oct 26 09:20:12 2005  
 FILE NAME = C:\projects\64B91\286\plan.dgn  
 PLOT SCALE = 98.0000 / IN.  
 USER NAME = polstra

REVISIONS	
NAME	DATE

ILLINOIS DEPARTMENT OF TRANSPORTATION

CLASS B PATCHING

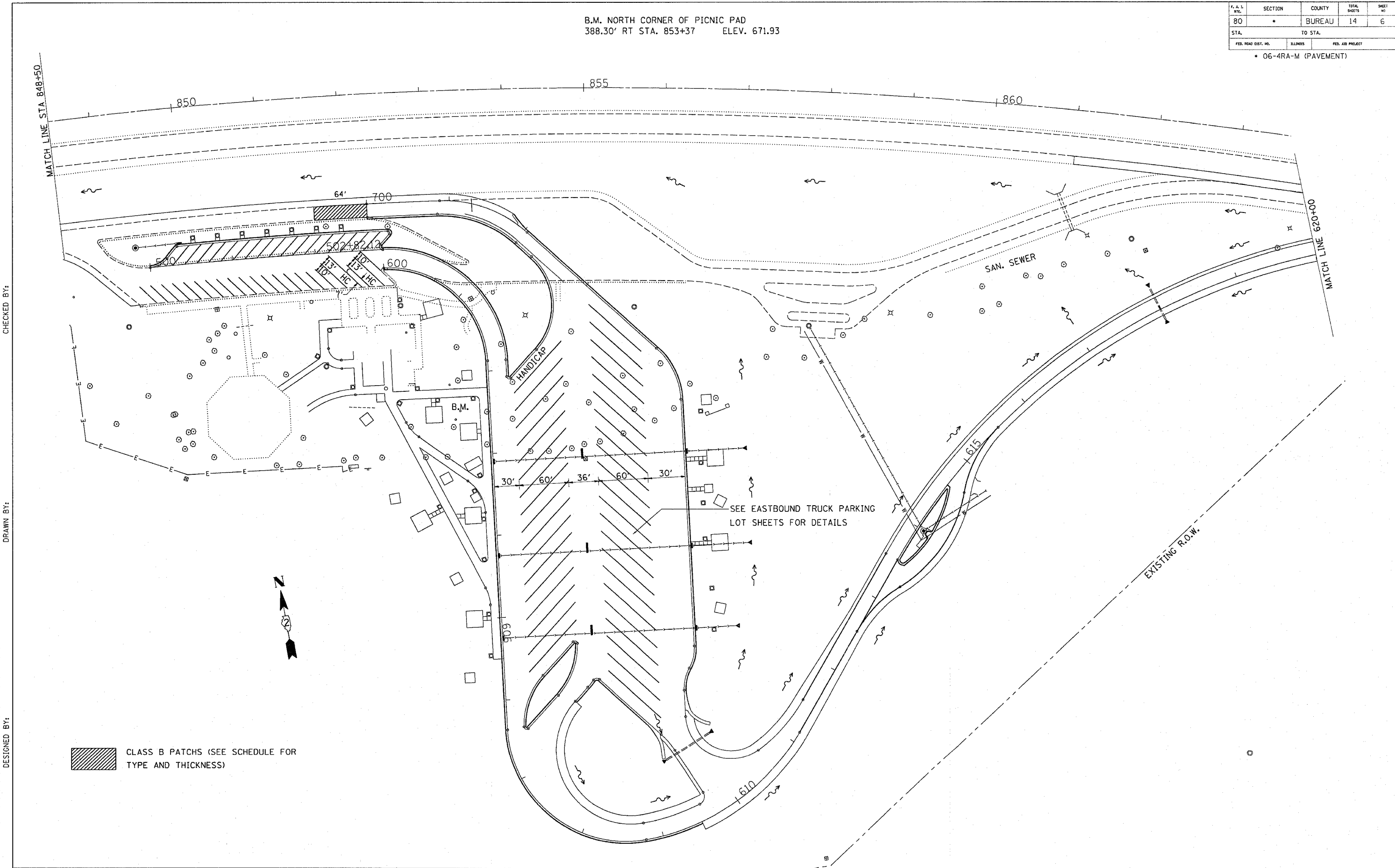
SCALE: VERT.  
 HORIZ.  
 DATE

DRAWN BY  
 CHECKED BY

F. A. I. DIST.	SECTION	COUNTY	TOTAL SHEETS	SHEET NO.
80	*	BUREAU	14	6
STA.		TO STA.		
FED. ROAD DIST. NO.	ILLINOIS	FED. AID PROJECT		

\* 06-4RA-M (PAVEMENT)

B.M. NORTH CORNER OF PICNIC PAD  
388.30' RT STA. 853+37 ELEV. 671.93



CLASS B PATCHES (SEE SCHEDULE FOR TYPE AND THICKNESS)

CHECKED BY:

DRAWN BY:

31-MAR-90 09:55:03  
Z:\R1111\003\20068644.DGN:3  
LEVELS = 2-68-1012,14,16,18,20,22,24,25,27-29,35,37-40,42,44-55,57,58  
DESIGNED BY:

F. A. DIST.	SECTION	COUNTY	TOTAL SHEETS	SHEET NO.
80	*	BUREAU	14	7
STA.	TO STA.			
FED. ROAD DIST. NO.	ILLINOIS	FED. AID PROJECT		

• 06-4RA-1 (PAVEMENT)



CLASS B PATCHES (SEE SCHEDULE FOR TYPE AND THICKNESS)

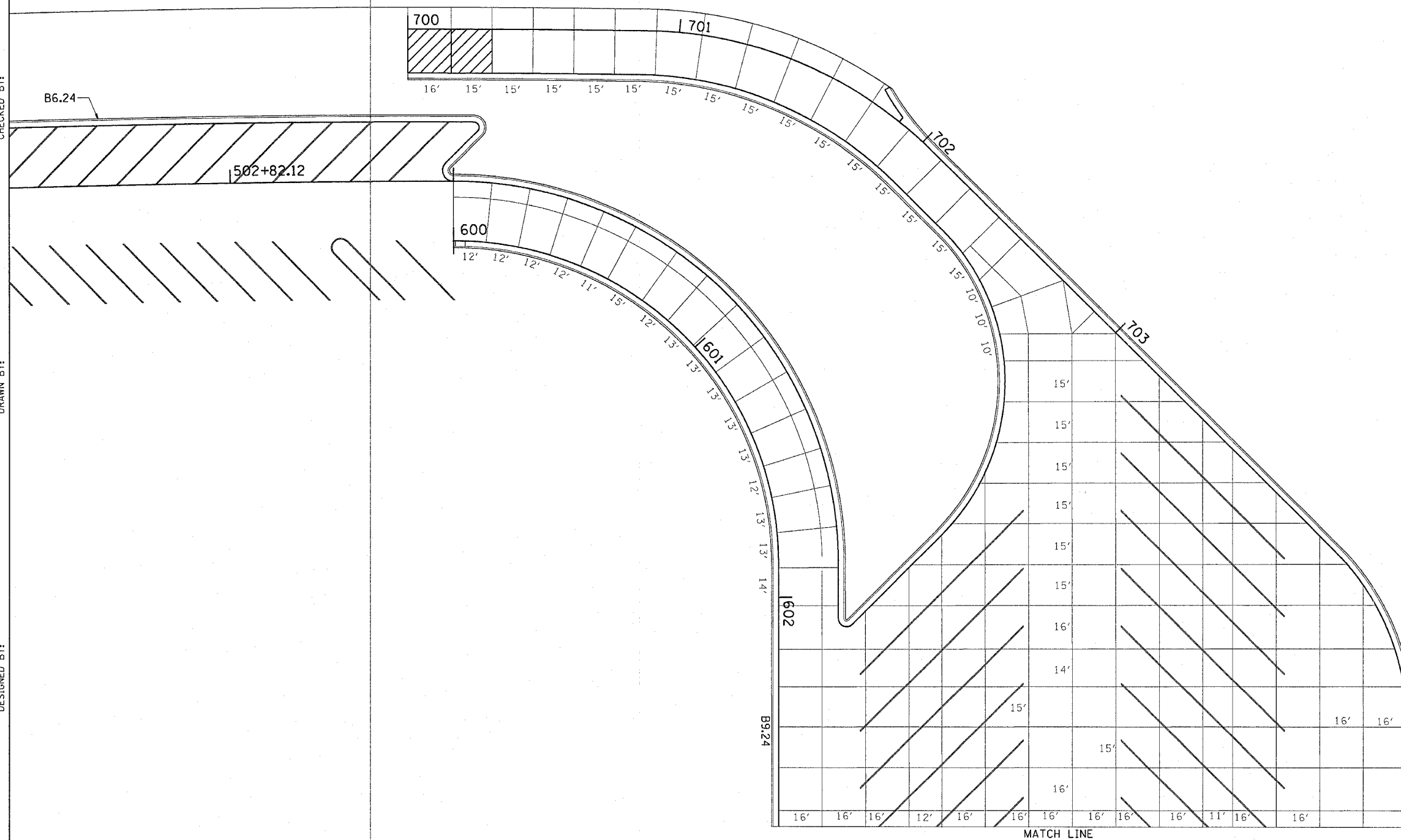


CHECKED BY:

DRAWN BY:

DESIGNED BY:

15-MAR-06 08:08:51 A.DGN43  
LEVELS = 1-63



F. A. DIST.	SECTION	COUNTY	TOTAL SHEETS	SHEET NO.
80	*	BUREAU	14	8
STA.		TO STA.		
FED. ROAD DIST. NO.	ALIGNED	FED. AID PROJECT		

• 06-4RA-1 (PAVEMENT)



CLASS B PATCHES (SEE SCHEDULE FOR, TYPE AND THICKNESS)

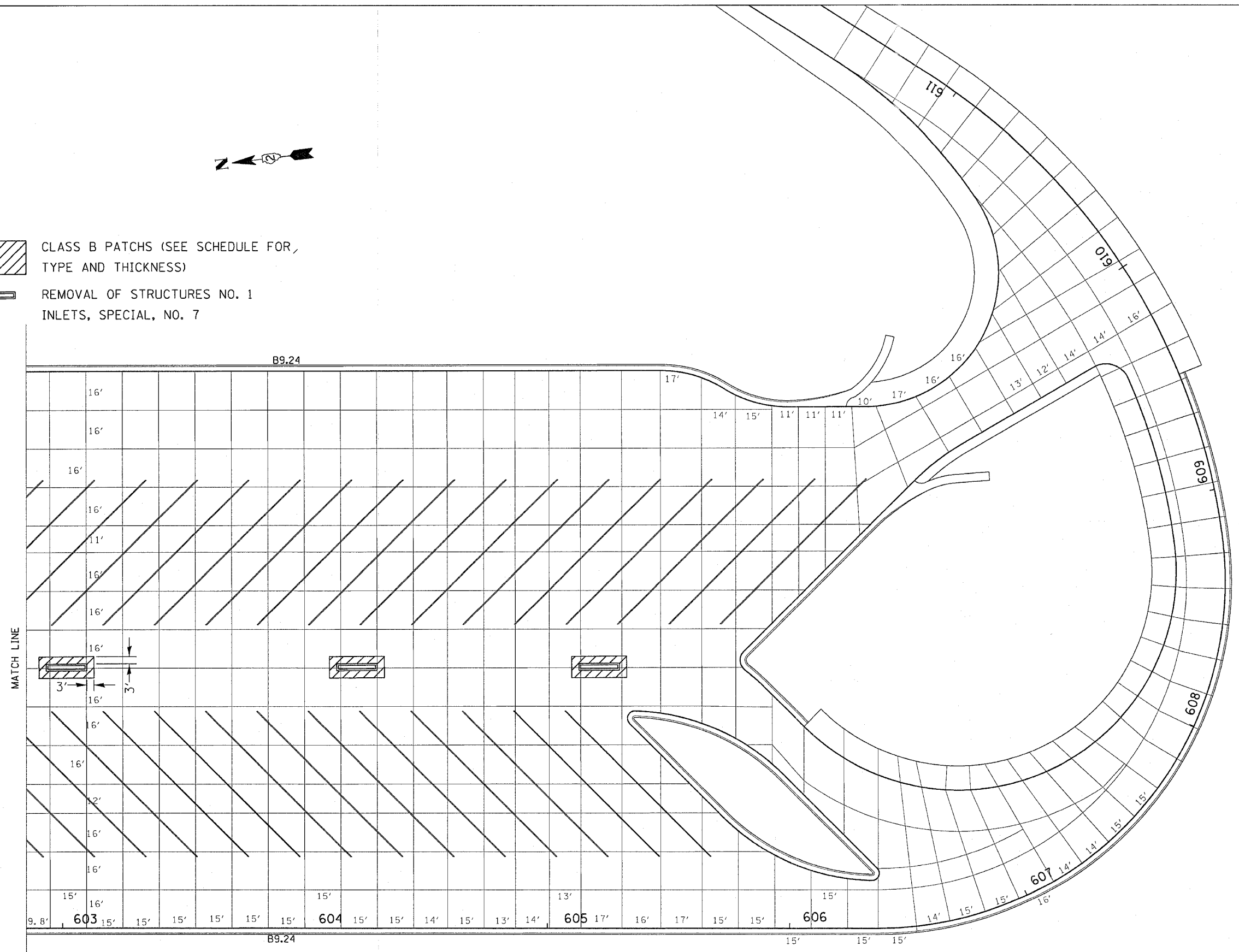


REMOVAL OF STRUCTURES NO. 1 INLETS, SPECIAL, NO. 7

CHECKED BY:

DRAWN BY:

DESIGNED BY:



15-MAR-80-0803851  
27-APR-80-2006867A.DWG  
LEVELS = 1-63



F. A. L. MILE	SECTION	COUNTY	TOTAL SHEETS	SHEET NO.
80	*	BUREAU	14	9
STA.		TO STA.		
FED. ROAD DIST. NO.		ILLINOIS		FED. AID PROJECT

\* 06-4RA-1 (PAVEMENT)

B.M. TOP OF WELL  
321.19' LT OF STA. 872+22 ELEV. 672.60

SEE WESTBOUND TRUCK PARKING LOT SHEETS FOR DETAILS

HANDICAP

MATCHLINE 406+50

EXISTING R.O.W.

SAN. SEWER

MATCH LINE 860+50

HC 127 HC 131  
LOT #3

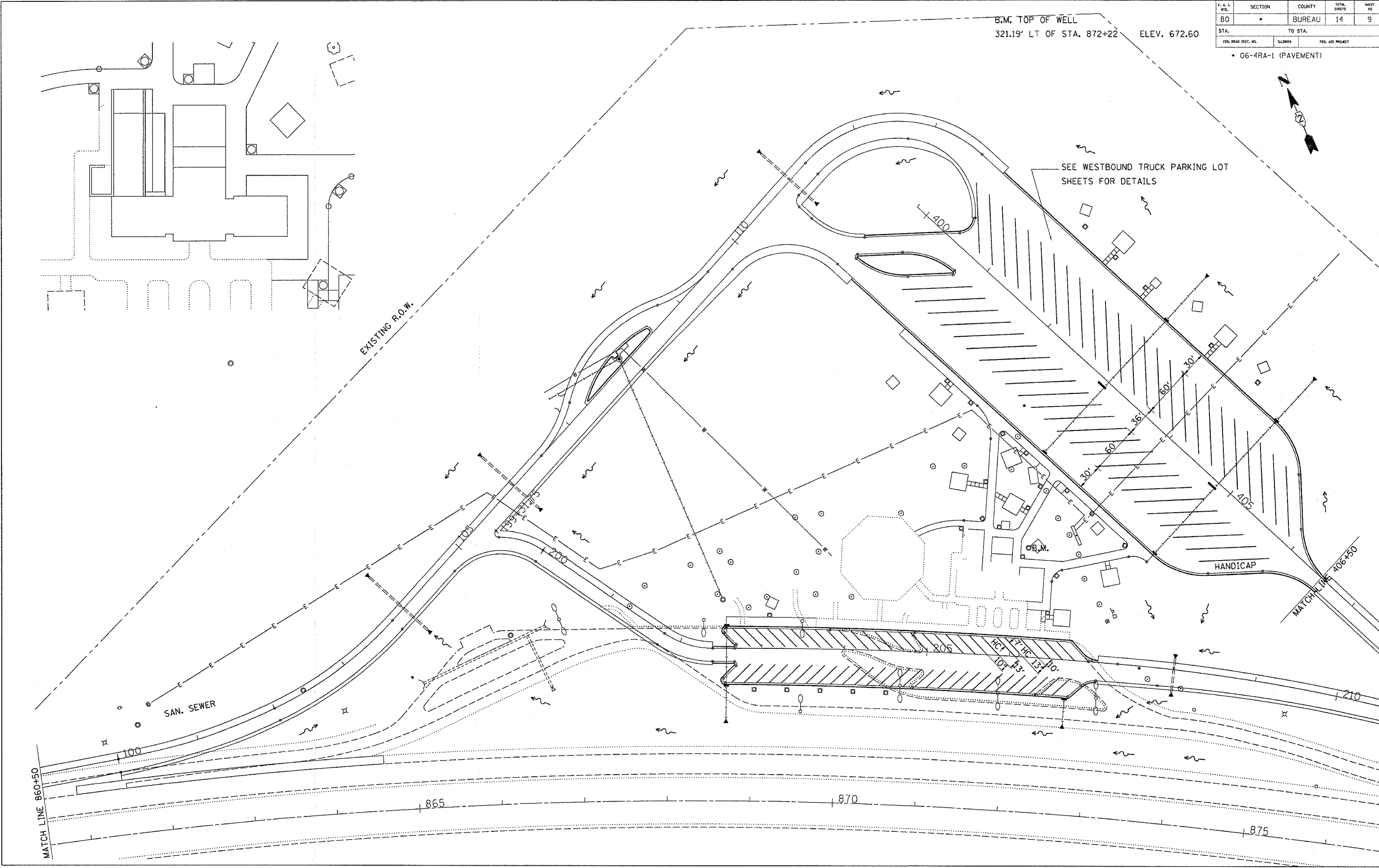
WESTBOUND

31-MAR-90 09:55:03  
ZF1H111.003ZF200686AA.DON3  
LEVELS = 2-6,8-10,12,14,16,18,20,22,24,25,214-29,35,37-40,42,44-55,57,58

CHECKED BY:

DRAWN BY:

DESIGNED BY:



F. A. RTE.	SECTION	COUNTY	TOTAL SHEETS	SHEET NO.
80		BUREAU	14	10
STA.		TO STA.		
FED. ROAD DIST. NO.	ILLINOIS	FED. AID PROJECT		

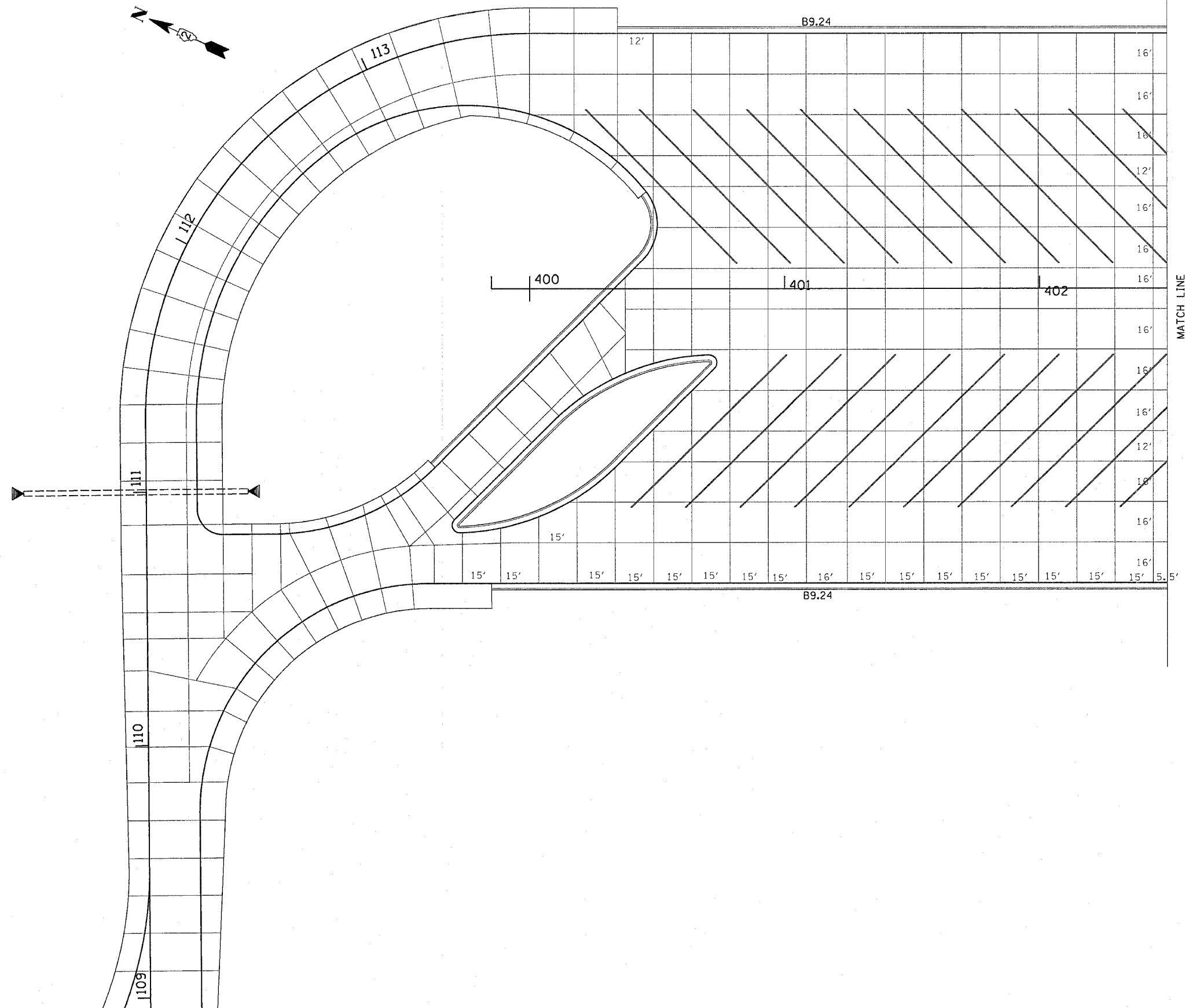
• 06-4RA-1 (PAVEMENT)

CHECKED BY:

DRAWN BY:

DESIGNED BY:

15-MAR-00 08:06:51  
Z:\111-00\111-00\666A.DGN  
LEVELS = 1-63

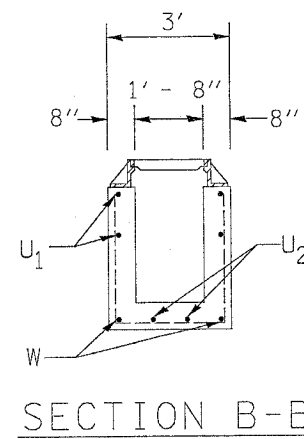
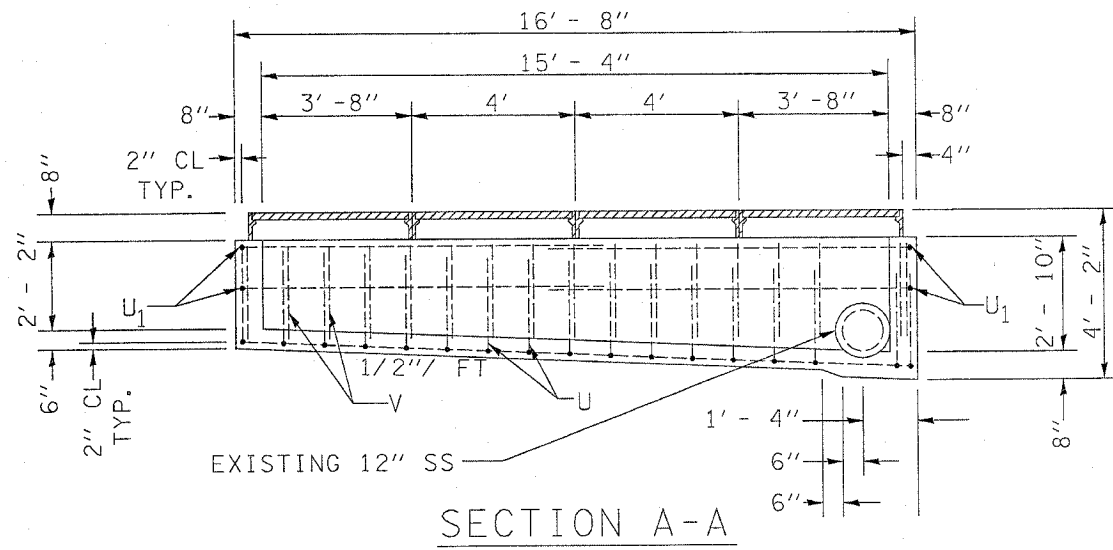




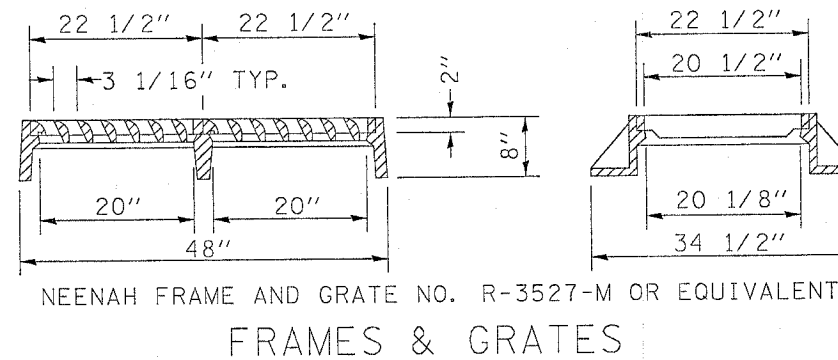
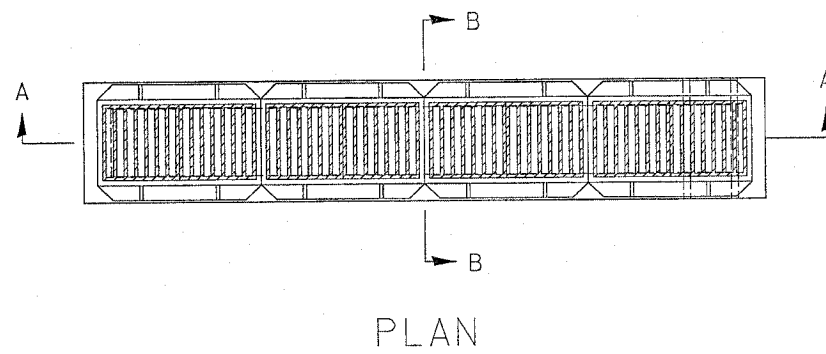
F. A. DIST.	SECTION	COUNTY	TOTAL SHEETS	SHEET NO.
80	*	BUREAU	14	12
STA.		TO STA.		
FED. ROAD DIST. NO.	ILLINOIS	FED. AID PROJECT		

• 06-4RA-1 (PAVEMENT)

# INLETS, SPECIAL, NO. 7

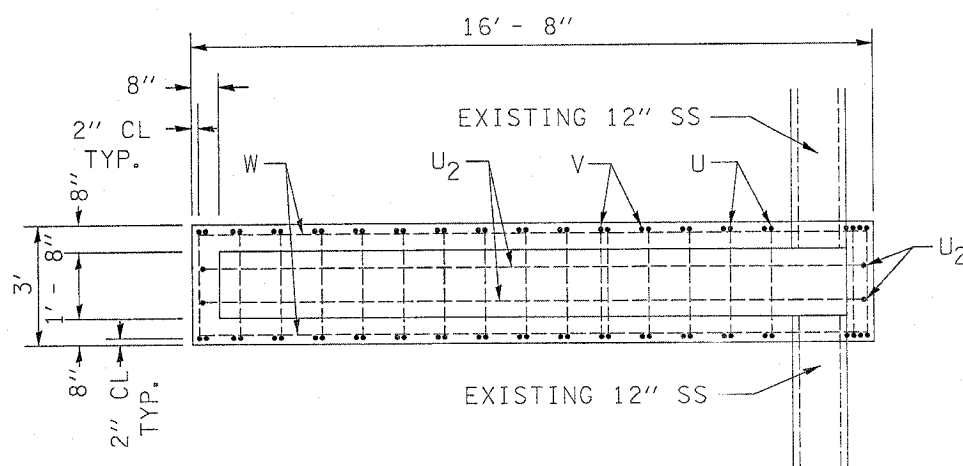


BAR	SIZE	NO.	LENGTH	UNITS	QUANTITY
U	#4	17	7' - 2"		
U <sub>1</sub>	#4	4	20' - 4"		
U <sub>2</sub>	#4	2	21' - 6"		
V	#4	34	2' - 3"		
W	#4	2	16' - 4"		
CLASS SI CONCRETE				CU. YD.	3.16
REINFORCEMENT BARS				LBS.	237.3
FRAME & GRATE				EACH	4
NON POROUS GRAN. EMB. (6")				CU. YD.	2.68
BREAKER RUN AGGREGATE (12")				TONS	11

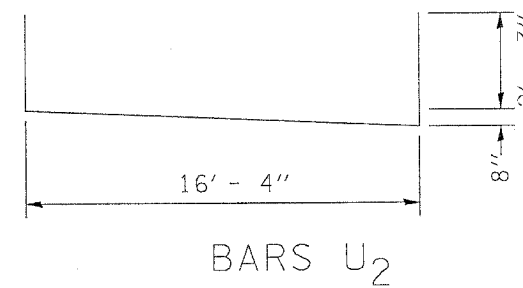


BAR	A	B
U	2' - 3"	2' - 8"
U <sub>1</sub>	8' - 10"	2' - 8"

BARS U & U<sub>1</sub>



PLAN OF REINFORCEMENT



BARS U<sub>2</sub>

GENERAL NOTES

CLASS SI CONCRETE SHALL BE USED THROUGHOUT.

ALL EXPOSED EDGES EXCEPT THE UPPER PERIMETER SHALL BE BEVELED 3/4".

A LAYER OF POROUS GRANULAR BEDDING EMBANKMENT (MIN. 6") SHALL BE PLACED BELOW THE ELEVATION OF THE BOTTOM OF THE INLET AND EXTEND TWO FEET BEYOND EACH SIDE OF THE INLET ACCORDING TO SECTION 540 OF THE STANDARD SPECIFICATIONS. A 12" LAYER OF BREAKER-RUN CRUSHED STONE SHALL BE PLACED UNDER THE POROUS GRANULAR EMBANKMENT.

THE CONTRACTOR SHALL TACK WELD THE GRATES TO THE FRAMES AT EACH LOCATION.

THE CONTRACT UNIT PRICE EACH FOR INLETS, SPECIAL, NO. 7 SHALL INCLUDE THE COST OF CONSTRUCTING THE INLET BOX, FURNISHING AND INSTALLING THE FOUR FRAMES AND GRATES, CLASS SI CONCRETE, REINFORCEMENT BARS, POROUS GRANULAR EMBANKMENT, BREAKER-RUN CRUSHED STONE AND TACK WELDING.

CHECKED BY:

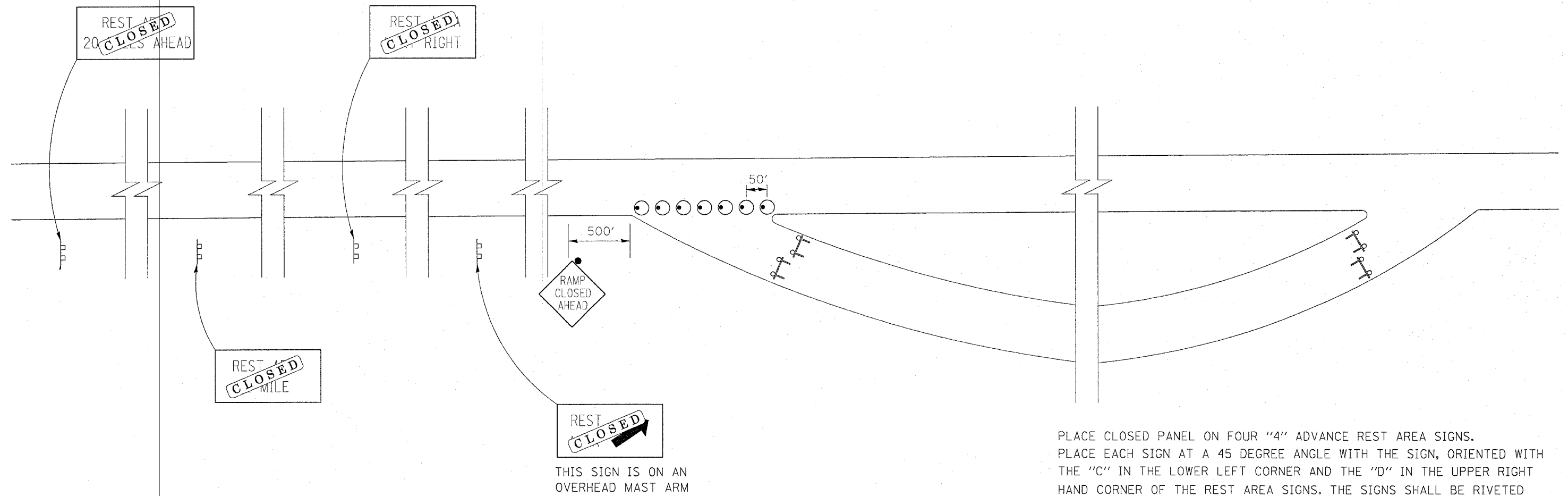
DRAWN BY:

DESIGNED BY:

25-MAR-2008 08:00:00 ADONIS 1546-1963

F.A. RTE.	SECTION	COUNTY	TOTAL SHEETS	SHEET NO.
I-80	06-4RA-M	BUREAU	14	13
STA.		TO STA.		
FED. ROAD DIST. NO.	ILLINOIS	FED. AID PROJECT		

# TRAFFIC CONTROL FOR ROAD CLOSURE

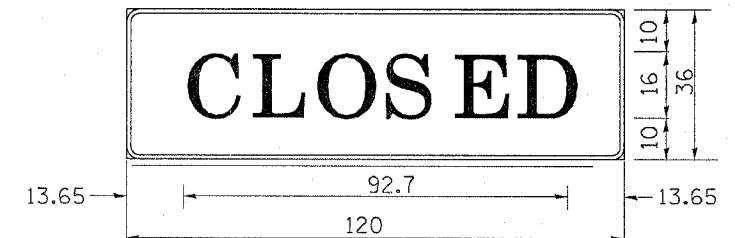


PLACE CLOSED PANEL ON FOUR "4" ADVANCE REST AREA SIGNS. PLACE EACH SIGN AT A 45 DEGREE ANGLE WITH THE SIGN, ORIENTED WITH THE "C" IN THE LOWER LEFT CORNER AND THE "D" IN THE UPPER RIGHT HAND CORNER OF THE REST AREA SIGNS. THE SIGNS SHALL BE RIVETED TO THE REST AREA SIGNS OR ATTACHED WITH SELF-TAPPING SHEET METAL SCREWS.

- DRUM/TYPE II BARRICADE WITH STEADY BURN LIGHT
- ⊥ TYPE III BARRICADES
- SIGN

THIS SIGN IS ON AN OVERHEAD MAST ARM

WESTBOUND REST AREA SHALL USE THE SAME TRAFFIC CONTROL.  
PLEASE CALL RICH MAGGI, I.D.O.T. LANDSCAPE ARCHITECT AT (815)284-5404 TWO WEEKS PRIOR TO CLOSING EACH RAMP.

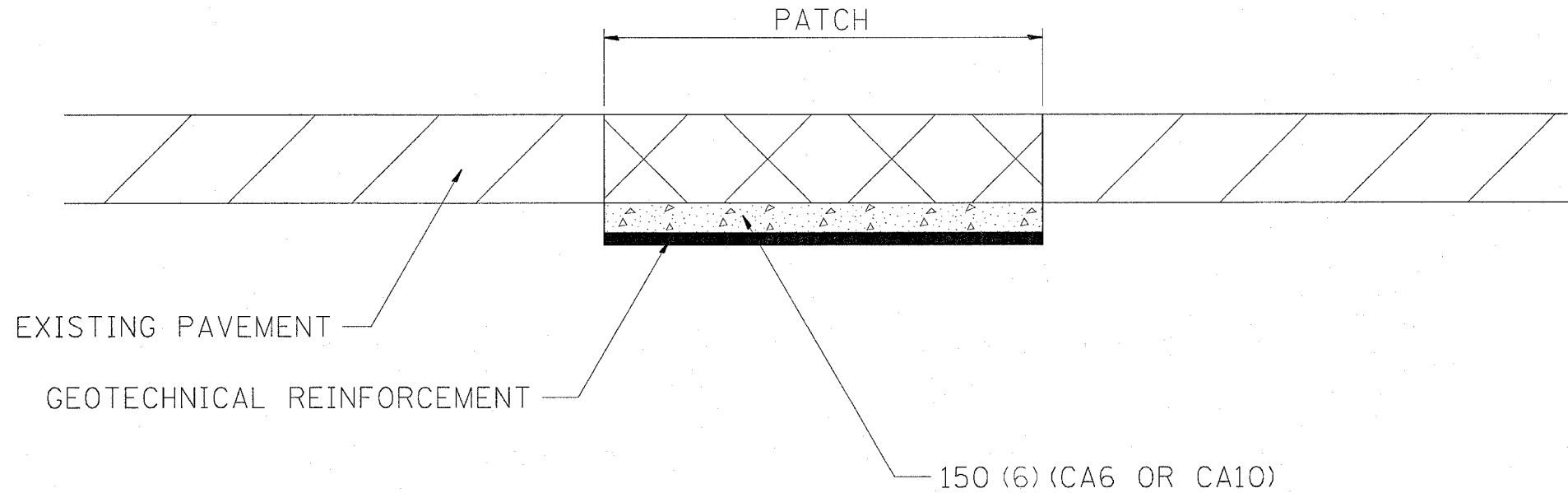


3.00" RADIUS, 1.00" BORDER, BLACK ON ORANGE; [CLOSED] E MOD; TABLE OF WIDTHS AND SPACES.

13.65	C	12.75	3.30	L	11.88	3.30	O	13.38	3.30	S	12.75	4.11	E	11.88	3.30	D	12.75	13.65
-------	---	-------	------	---	-------	------	---	-------	------	---	-------	------	---	-------	------	---	-------	-------

F.A. RTE.	SECTION	COUNTY	TOTAL SHEETS	SHEET NO.
I-80	06-4RA-M	BUREAU	14	14
STA.		TO STA.		
FED. ROAD DIST. NO.	ILLINOIS	FED. AID PROJECT		

# SUBGRADE REPLACEMENT



**NOTES:**

The Engineer will determine which patches will require Subgrade Replacement, generally when the  $Q_u$  of the Subgrade  $< 0.3T_{SF}$  or if patch density is questionable.

UNSTABLE SUBGRADE MATERIAL SHALL BE REMOVED AND DISPOSED OF BY THE CONTRACTOR.

This work will be paid for at the contract unit price per  $m^3$  (CU. YD.) for GRANULAR SUBGRADE REPLACEMENT and per  $m^2$  (SQ. YD.) for GEOTECHNICAL REINFORCEMENT.

ALL DIMENSIONS ARE IN MILLIMETERS (INCHES) UNLESS OTHERWISE NOTED.

**SUBGRADE REPLACEMENT**

**97.4**

PLOT DATE = Wed Oct 26 07:27:51 2005  
 PLOT NAME = I-80-06-4RA-M-97.4.dgn  
 PLOT SCALE = 50.00000 / IN.  
 REFERENCE = REF.