

INDEX OF SHEETS

SHEET NO. DESCRIPTION

1. COVER SHEET
2. INDEX OF SHEETS AND GENERAL NOTES
- 3.-7. SUMMARY OF QUANTITIES
8. EXISTING TYPICAL SECTIONS
- 9.-10. TYPICAL SECTIONS F.A.I. 80
- 11.-14. TYPICAL SECTIONS F.A.P. 623 (SENECA ROAD)
15. TYPICAL SECTIONS RAMP AND FRONTAGE ROAD
16. TYPICAL SECTIONS LOCKED GATE ACCESS ROADS
- 17.-28. SCHEDULE OF QUANTITIES
- 29.-30. ALIGNMENT, TIES AND BENCHMARKS
- 31.-37. REMOVAL PLANS
- 38.-42. PLAN AND PROFILE, F.A.P. 623 (SENECA ROAD)
- 43.-44. PLAN AND PROPOSED PROFILE, RAMP A
- 45.-46. PLAN AND PROPOSED PROFILE, RAMP B
- 47.-48. PLAN AND PROPOSED PROFILE, RAMP C
- 49.-50. PLAN AND PROPOSED PROFILE, RAMP D
- 51.-53. PLAN AND PROFILE, FRONTAGE ROAD
54. PLAN AND PROFILE, WB ACCESS ROAD
55. PLAN AND PROFILE, EB ACCESS ROAD
- 56.-58. TRAFFIC CONTROL AND PROTECTION PLAN
- 59.-60. TRAFFIC CONTROL AND PROTECTION TYPICAL SECTIONS
- 61.-62A. TRAFFIC CONTROL AND PROTECTION DETAILS
- 63.-65. TRAFFIC CONTROL AND PROTECTION FOR DECK BEAM OPERATIONS
66. DETOUR PLAN
- 67.-74. EROSION CONTROL & DRAINAGE PLANS
- 75.-76. PAVEMENT TRANSITIONS AND APPROACH CHANNELIZATION
77. INTERSECTION DETAILS FRONTAGE ROAD
78. INTERSECTION DETAILS RAMP C AND D
79. INTERSECTION DETAILS RAMP A AND B
- 80.-81. PAVEMENT MARKING DETAILS
82. LIGHTING PLAN
- 83.-84C. LIGHTING DETAILS
85. EXISTING SIGN LAYOUT
86. PROPOSED SIGN LAYOUT
87. SIGN DETAILS
88. PLACEMENT OF TEMPORARY CONCRETE BARRIERS
89. INERTIAL BARRIER INSTALLATION
90. INLET BOX TYPE 36 SPECIAL DETAILS
91. MISCELLANEOUS DETAILS
- 92.-93. S.N. 032-W001 RETAINING WALL STRUCTURE PLANS
- 94.-113A. S.N. 032-0047 BRIDGE STRUCTURE PLANS
- 114.-130B. F.A.P. 623 (SENECA ROAD) CROSS SECTIONS
- 131.-134. PROPOSED RAMP A CROSS SECTIONS
- 135.-141. PROPOSED RAMP B CROSS SECTIONS
- 142.-151. PROPOSED RAMP C CROSS SECTIONS
- 152.-158. PROPOSED RAMP D CROSS SECTIONS
.
- 159.-162. PROPOSED FRONTAGE ROAD CROSS SECTIONS
- 163.-164. PROPOSED WB ACCESS ROAD CROSS SECTIONS
- 165.-166. PROPOSED EB ACCESS ROAD CROSS SECTIONS
- 167.-171. EXISTING BRIDGE PLANS
- 171A-171C. 345 KV COM. ED. LINES

SCALE IN FEET - PLAN & PROFILE
1" = 50'

FULL SIZE PLANS HAVE BEEN PREPARED USING STANDARD ENGINEERING SCALES. REDUCED SIZED PLANS WILL NOT CONFORM TO STANDARD SCALES. IN MAKING MEASUREMENTS ON REDUCED PLANS, THE ABOVE SCALES MAY BE USED.

MICROFILMED _____
REEL NUMBER _____
AWARDED _____
RESIDENT ENGINEER _____
AS BUILT CHANGES WERE MADE ON THE FOLLOWING SHEETS _____

J.U.L.I.E.
JOINT UTILITY LOCATION INFORMATION FOR EXCAVATION
1-800-892-0123

DISTRICT 3 NO.: (815)434-6131
PROJECT ENGINEER: DAVE BROVIAK
UNIT CHIEF: MARK JONES
TOWNSHIP: NETTLE CREEK
RESIDENT ENGINEER

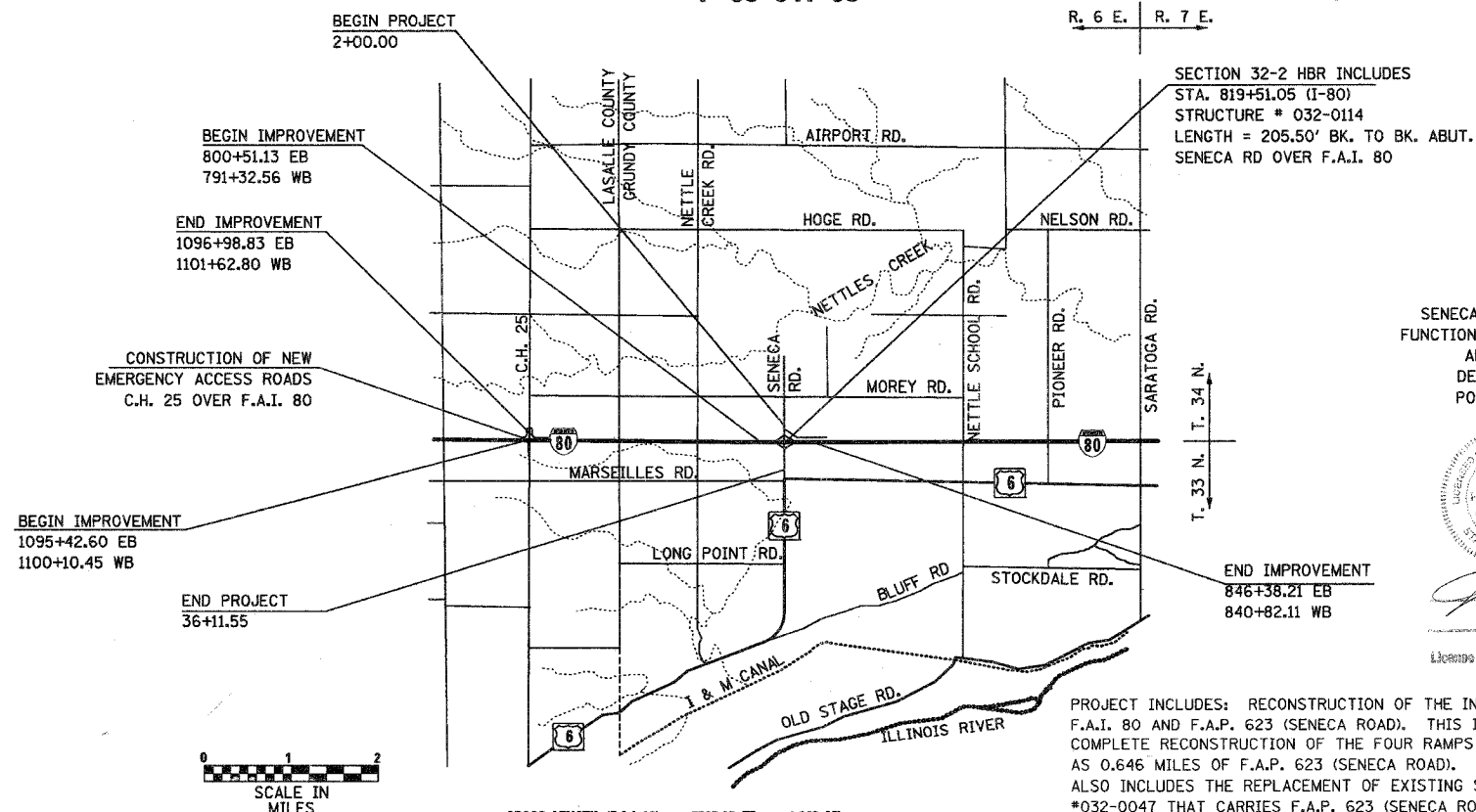
CONTRACT NO. 66412

REVISED
1-6-2006

STATE OF ILLINOIS DEPARTMENT OF TRANSPORTATION DIVISION OF HIGHWAYS PROPOSED HIGHWAY PLANS

F.A.I. ROUTE 80
SECTION 32-2 HBR & (50-6) AC
PROJECT IM-BRI-80-3 (121) 104
GRUNDY & LaSALLE COUNTIES
C-93-013-04

BRIDGE REPLACEMENT AND RAMP RECONSTRUCTION
& EMERGENCY ACCESS ROADS
P-93-041-93



GROSS LENGTH (F.A.I. 80) = 5505.65 FT. = 1.043 MI.
NET LENGTH (F.A.I. 80) = 5505.65 FT. = 1.043 MI.

GROSS LENGTH (SENECA RD.) = 3411.55 FT. = 0.646 MI.
NET LENGTH (SENECA RD.) = 3411.55 FT. = 0.646 MI.

SECTION 32-2 HBR INCLUDES
STA. 819+51.05 (I-80)
STRUCTURE # 032-0114
LENGTH = 205.50' BK. TO BK. ABUT.
SENECA RD OVER F.A.I. 80

HIGHWAY CLASSIFICATIONS

SENECA ROAD - F.A.P. RTE 623
FUNCTIONAL CLASS: MINOR ARTERIAL
ADT: 3,100 (2005)
DESIGN SPEED: 60 MPH
POSTED SPEED: 45 MPH

I-80 - F.A.I. RTE. 80
FUNCTIONAL CLASS: PRINCIPAL ARTERIAL
ADT: 31,400 (2005)
DESIGN SPEED: 70 MPH
POSTED SPEED: 65 MPH



STATE OF ILLINOIS
DEPARTMENT OF TRANSPORTATION
DIVISION OF HIGHWAYS

SUBMITTED Nov. 16 20 05
Murray T. Munton
DEPUTY DIRECTOR OF HIGHWAYS, REGION ENGINEER

December 9, 20 05
Mike Hine
ENGINEER OF DESIGN AND ENVIRONMENT

December 9, 20 05
Eric Harshbarger
DEPUTY DIRECTOR OF HIGHWAYS, CHIEF ENGINEER

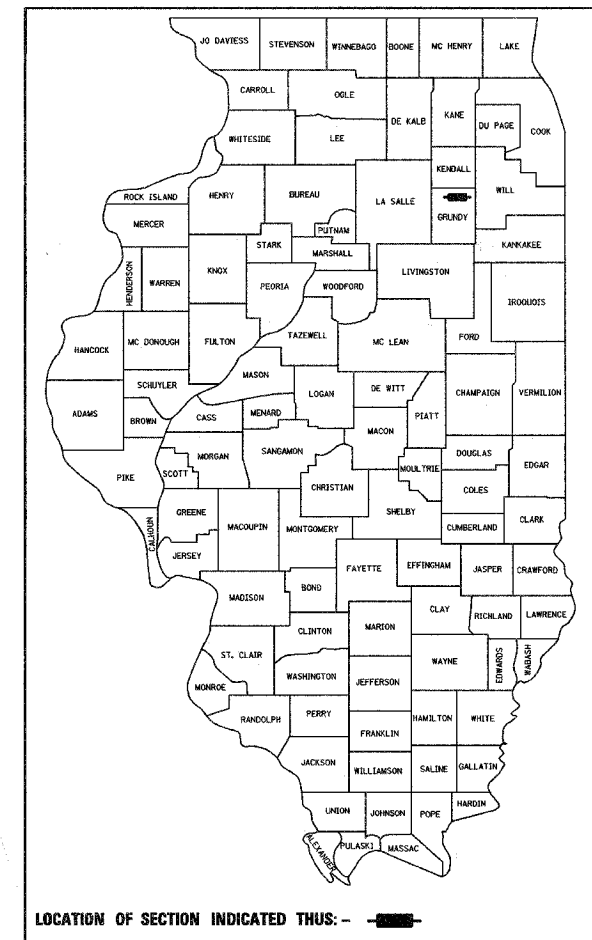
PRINTED BY THE AUTHORITY
OF THE STATE OF ILLINOIS

F.A.I. RTE.	SECTION	COUNTY	TOTAL SHEETS	SHEET NO.
80	32-2HBR	GRUNDY	171	1

CONTRACT NO. 66412

719
-2
= 177

P-93-041-93
D93-016-04



LOCATION OF SECTION INDICATED THUS: -



Louis Berger & Associates, Inc.
100 Elm Street, Suite 300
Manchester, NH 03101
(603) 644-5200

SUMMARY OF QUANTITIES

F.A.I. RTE.	SECTION	COUNTY	TOTAL SHEETS	SHEET NO.
80	32-2HBR	GRUNDY	171	3
STA.		TO STA.		
FED. ROAD DIST. NO.	ILLINOIS	FED. AID PROJECT		
CONTRACT NO. 66412				

NO.	PAY ITEM NO.	ITEM	UNIT	TOTAL QUANTITY	IM	IM	BRI	IM	90% FED 10% ST
					90% FED 10% STATE GRUNDY CO.	90% FED 10% STATE	80% FED 20% STATE GRUNDY CO.	90% FED 10% STATE GRUNDY CO.	GRUNDY
1	20100110	TREE REMOVAL (6 TO 15 UNITS DIAMETER)	UNIT	542	542				
2	20100210	TREE REMOVAL (OVER 15 UNITS DIAMETER)	UNIT	78	78				
3	20200100	EARTH EXCAVATION	CU YD	78015	76435	1580			
4	20201200	REMOVAL AND DISPOSAL OF UNSUITABLE MATERIAL	CU YD	1069	890				179
5	20400800	FURNISHED EXCAVATION	CU YD	79539	78054	1485			
6	20700400	POROUS GRANULAR EMBANKMENT SPECIAL	CU YD	446			267		179
7	20800150	TRENCH BACKFILL	CU YD	774	649	125			
8	21001000	GEOTECHNICAL FABRIC FOR GROUND STABILIZATION	SQ YD	58325	58325				
9	21101505	TOPSOIL EXCAVATION AND PLACEMENT	CU YD	14227	13447	780			
10	25000210	SEEDING, CLASS 2A	ACRE	21.7	21.5	0.2			
11	25000312	SEEDING, CLASS 4A	ACRE	11.1	10.9	0.2			
12	25000400	NITROGEN FERTILIZER NUTRIENT	POUND	1953	1935	18			
13	25000500	PHOSPHORUS FERTILIZER NUTRIENT	POUND	1953	1935	18			
14	25000600	POTASSIUM FERTILIZER NUTRIENT	POUND	1953	1935	18			
15	25100120	MULCH, METHOD 2	TON	68	66	2			
16	25100630	EROSION CONTROL BLANKET	SQ YD	12740	11370	1370			
17	28000250	TEMPORARY EROSION CONTROL SEEDING	POUND	6480	6400	80			
18	28000300	TEMPORARY DITCH CHECKS	EACH	60	50	10			
19	28000400	PERIMETER EROSION BARRIER	FOOT	6255	5045	1210			
20	28000500	INLET AND PIPE PROTECTION	EACH	36	29	7			
21	28100105	STONE RIPRAP CLASS A3	SQ YD	284	284				
22	28100107	STONE RIPRAP CLASS A4	SQ YD	269	269				
23	28200200	FILTER FABRIC	SQ YD	269	269				
24	31200100	STABILIZED SUB-BASE 4"	SQ YD	36254	36254				
25	35100700	AGGREGATE BASE COURSE TYPE A - 8"	SQ YD	5053	987	4066			
26	35101800	AGGREGATE BASE COURSE TYPE B - 6"	SQ YD	2431	2431				
27	40200710	AGGREGATE SURFACE COURSE, TYPE A - 10"	SQ YD	6855	6855				
28	40200900	AGGREGATE SURFACE COURSE, TYPE B	CU YD	128	128				
29	40600100	BITUMINOUS MATERIAL (PRIME COAT)	GAL	275	275				
30	40600895	CONSTRUCTION TEST STRIP	EACH	1	1				
31	40600980	BITUMINOUS SURFACE REMOVAL BUTT JOINT	SQ YD	650	650				
32	40600990	TEMPORARY RAMPS	SQ YD	69	69				
33	40800040	INCIDENTAL BITUMINOUS SURFACING	TON	90	90				
34	42000411	PORTLAND CEMENT CONCRETE PAVEMENT 9 1/2" (JOINTED)	SQ YD	30771	30771				
35	42001400	BRIDGE APPROACH PAVEMENT (SPECIAL)	SQ YD	425	425				
36	44000006	BITUMINOUS SURFACE REMOVAL 1 1/2"	SQ YD	29023	29023				
37	44000100	PAVEMENT REMOVAL	SQ YD	15891	15891				
38	44000200	DRIVEWAY PAVEMENT REMOVAL	SQ YD	595	595				
39	44002805	ISLAND REMOVAL	SQ FT	1089	1089				
40	44004250	PAVED SHOULDER REMOVAL	SQ YD	17321	17321				
41	48101200	AGGREGATE SHOULDERS, TYPE B	TON	3307	3002	305			
42	48200800	BITUMINOUS SHOULDERS 10"	SQ YD	1692	1692				
43	50100100	REMOVAL OF EXISTING STRUCTURES	EACH	1			1		
44	50104400	CONCRETE HEADWALL REMOVAL	EACH	14	14				
45	50105220	PIPE CULVERT REMOVAL	FOOT	1044	1044				
46	50200100	STRUCTURE EXCAVATION	CU YD	861			271		590

REVISI
1-06-2006

Louis Berger & Associates, Inc.
100 Elm Street, Suite 300
Manchester, NH 03101
(603) 644-5200

REVISIONS	
NAME	DATE

ILLINOIS DEPARTMENT OF TRANSPORTATION
I-80 (F.A.I. 80) AT
SENECA ROAD (F.A.P. 623)
GRUNDY COUNTY
SUMMARY OF QUANTITIES
SCALE: VERT.
HORIZ.
DATE 10/14/05
DRAWN BY NMR/TCH
CHECKED BY DJL/CML

11/15/2005 V:\CHICAGO\DOT\1836\CAD\dwg\1836_SUM_QNTY_01.dgn

SUMMARY OF QUANTITIES

F.A.I. RTE.	SECTION	COUNTY	TOTAL SHEETS	SHEET NO.
80	32-2HDR	GRUNDY	171	6
STA.		TO STA.		
FED. ROAD DIST. NO.	ILLINOIS	FED. AID PROJECT		
CONTRACT NO. 66412				

NO.	PAY ITEM NO.	ITEM	UNIT	TOTAL QUANTITY	IM	IM	BRI	IM
					90% FED 10% STATE GRUNDY CO.	90% FED 10% STATE	80% FED 20% STATE GRUNDY CO.	90% FED 10% STATE GRUNDY CO.
					ROADWAY J000-2A	LASALLE 1000	SN 032-0114 BRIDGE X771-2A	LIGHTING Y030-IE SAFETY SFTY-3N
139	70103700	TRAFFIC CONTROL COMPLETE	L SUM	1	1			
140	70103815	TRAFFIC CONTROL SURVEILLANCE	CAL-DA	60	60			
141	70300100	SHORT TERM PAVEMENT MARKINGS	FOOT	2,665	2,665			
142	70300210	TEMPORARY PAVEMENT MARKING - LETTERS AND SYMBOLS	SQ FT	50	50			
143	70300220	TEMPORARY PAVEMENT MARKING - LINE 4"	FOOT	62,490	62,490			
144	70300240	TEMPORARY PAVEMENT MARKING - LINE 6"	FOOT	3575	3575			
145	70300250	TEMPORARY PAVEMENT MARKING - LINE 8"	FOOT	6630	6630			
146	70300260	TEMPORARY PAVEMENT MARKING - LINE 12"	FOOT	1110	1110			
147	70300280	TEMPORARY PAVEMENT MARKING - LINE 24"	FOOT	100	100			
148	70400100	TEMPORARY CONCRETE BARRIER	FOOT	9860	9860			
149	70400200	RELOCATE TEMPORARY CONCRETE BARRIER	FOOT	1870	1870			
* 150	72000100	SIGN PANEL - TYPE 1	SQ FT	106	106			
151								
152								
* 153	72400200	REMOVE SIGN PANEL ASSEMBLY - TYPE B	EACH	2	2			
* 154	72400500	RELOCATE SIGN PANEL ASSEMBLY - TYPE A	EACH	19	19			
* 155	72400600	RELOCATE SIGN PANEL ASSEMBLY - TYPE B	EACH	13	13			
* 156	72400730	RELOCATE SIGN PANEL - TYPE 3	SQ FT	825	825			
* 157	73000100	WOOD SIGN SUPPORT	FOOT	910	838			
158	73400100	CONCRETE FOUNDATIONS	CU YD	18	18			
159	73502000	RELOCATE GROUND-MOUNTED SIGN SUPPORT	EACH	16	16			
160	73700100	REMOVE GROUND - MOUNTED SIGN SUPPORT	EACH	16	16			
161	73700200	REMOVE CONCRETE FOUNDATION - GROUND MOUNT	EACH	16	16			
* 162	78008300	POLYUREA PAVEMENT MARKING TYPE 2 - LETTERS & SYMBOLS	SQ FT	50	50			
* 163	78008310	POLYUREA PAVEMENT MARKING TYPE 2 - LINE 4"	FOOT	45150	45150			
* 164	78008330	POLYUREA PAVEMENT MARKING TYPE 2 - LINE 6"	FOOT	3575	3575			
* 165	78008340	POLYUREA PAVEMENT MARKING TYPE 2 - LINE 8"	FOOT	6630	6630			
* 166	78008350	POLYUREA PAVEMENT MARKING TYPE 2 - LINE 12"	FOOT	1110	1110			
* 167	78008370	POLYUREA PAVEMENT MARKING TYPE 2 - LINE 24"	FOOT	100	100			
* 168	78100100	RAISED REFLECTIVE PAVEMENT MARKER	EACH	534	534			
* 169	78200300	PRISMATIC CURB REFLECTOR	EACH	158	158			
* 170	78200455	BIDIRECTIONAL GUARD RAIL REFLECTORS	EACH	96	96			
* 171	78201000	TERMINAL MARKER - DIRECT APPLIED	EACH	18	16	2		
172	78300100	PAVEMENT MARKING REMOVAL	SQ FT	28,974	28,974			
* 173	80300100	LOCATING UNDERGROUND CABLE	FOOT	150			150	
* 174	80400100	ELECTRIC SERVICE INSTALLATION	EACH	1			1	
* 175	80600200	GROUNDING ELECTRODE BELOW GRADE	EACH	1			1	
* 176	81020500	CONDUIT PUSHED, 2" DIA., INTERMEDIATE METAL	FOOT	265			265	
* 177	81025300	CONDUIT ENCASED, REINFORCED CONCRETE 2" DIA., PVC 2 x 1	FOOT	36			36	
* 178	81500200	TRENCH AND BACKFILL FOR ELECTRICAL WORK	FOOT	4,650			4,650	
* 179	81600215	UNIT DUCT, 2 #8 XLP, 1 #8 XLP GROUND 3/4" POLYETHYLENE	FOOT	5,115			5,115	
* 180	82102250	LUMINAIRE, SODIUM VAPOR, HIGH MAST, HORIZONTAL MOUNT, 250 WATT	EACH	8			8	
* 181	82105400	LUMINAIRE, SODIUM VAPOR, HIGH MAST, MULT I-MOUNT, 400 WATT	EACH	8			8	
* 182	82500520	LIGHTING CONTROLLER TYPE CB-RCS 60AMP - 480 VOLT	EACH	1			1	
* 183	83502300	LIGHT TOWER, 100 FT. MOUNTING HEIGHT, LUMINAIRE MT. - 4	EACH	2			2	
* 184	83607800	LIGHT TOWER, 150 FT. MOUNTING HEIGHT, LUMINAIRE MT. - 6	EACH	2			2	

REVISIONS
1-06-2006

Louis Berger & Associates, Inc.
100 Elm Street, Suite 300
Manchester, NH 03101
(603) 644-5200

REVISIONS	
NAME	DATE

ILLINOIS DEPARTMENT OF TRANSPORTATION
**I-80 (F.A.I. 80) AT
SENECA ROAD (F.A.P. 623)
GRUNDY COUNTY**
SUMMARY OF QUANTITIES
SCALE: VERT.
HORIZ.
DATE 10/14/05
DRAWN BY NMR/TCH
CHECKED BY DJL/CML

* SPECIALTY ITEMS

11/15/2005 V:\CHICAGO\DOT\1836\CAD\rdwy\div\1836_SUM_QNTY_04.dgn

SUMMARY OF QUANTITIES

F.A.I. RTE.	SECTION	COUNTY	TOTAL SHEETS	SHEET NO.
80	32-2HBR	GRUNDY	171	7
STA.		TO STA.		
FED. ROAD DIST. NO.		ILLINOIS FED. AID PROJECT		
CONTRACT NO. 66412				

NO.	PAY ITEM NO.	ITEM	UNIT	TOTAL QUANTITY	IM	IM	BRI	IM		90% FED 10% ST
					90% FED 10% STATE GRUNDY CO.	90% FED 10% STATE	80% FED 20% STATE GRUNDY CO.	GRUNDY CO.		GRUNDY
					ROADWAY J000-2A	LASALLE 1000	SN 032-0114 BRIDGE X771-2A	LIGHTING Y030-IE	SAFETY SFTY-3N	SN 032-W001 RETAINING WALL Y007
* 185	83700300	LIGHT TOWER FOUNDATION, 48" DIAMETER	FOOT	30					30	
* 186	83700350	LIGHT TOWER FOUNDATION, 54" DIAMETER	FOOT	36					36	
* 187	84200500	REMOVAL OF EXISTING LIGHTING UNIT, SALVAGE	EACH	16					16	
* 188	84200705	LIGHTING FOUNDATION REMOVAL, PARTIAL	EACH	4					4	
* 189	84500110	REMOVAL OF LIGHTING CONTROLLER	EACH	1					1	
* 190	84500120	REMOVAL OF ELECTRIC INSTALLATION SERVICE	EACH	1					1	
* 191	84500130	REMOVAL OF LIGHTING CONTROLLER FOUNDATION	EACH	1					1	
192	X0322936	REMOVE EXISTING FLARED END SECTION	EACH	4	4					
193	X3550300	BITUMINOUS BASE COURSE, SUPERPAVE 6"	TON	850	850					
194	X4066414	BITUMINOUS CONCRETE SURFACE COURSE, SUPERPAVE, MIX "C" N50	TON	415	19	396				
195	X4066538	POLYMERIZED BITUMINOUS CONCRETE SURFACE COURSE, SUPERPAVE, MIX "E" N90	TON	2429	2429					
196	X4066765	LEVELING BINDER (MACHINE METHOD) SUPERPAVE N50	TON	707	707					
197	X4066770	LEVELING BINDER (MACHINE METHOD) SUPERPAVE N70	TON	497	497					
198	X6013600	PIPE UNDERDRAINS 4" (MODIFIED)	FOOT	19542	19542					
199	X6013820	PIPE UNDERDRAIN OUTLET EXTENSION SPECIAL	EACH	9	9					
200	X6063600	COMBINATION CONCRETE CURB AND GUTTER, TYPE M-4.24	FOOT	39	39					
201	X6064201	COMBINATION CONCRETE CURB AND GUTTER, TYPE M-4.06	FOOT	2479	2479					
202	X6065701	CONCRETE MEDIAN, TYPE SM-4.06	SQ FT	2443	2443					
203	X8420220	REMOVE EXISTING HIGH MAST LIGHT TOWER	EACH	4					4	
204	XX005347	BITUMINOUS CONCRETE BINDER COURSE, IL 19.0 N50	TON	6,659	6,214	445				
205	XX005430	MAINTENANCE OF EXISTING HIGHWAY LIGHTING	L SUM	1					1	
* 206	XX005466	FURNISHING AND INSTALLING GUARDRAIL END SHOES	EACH	1	0	1				
207	Z0001050	AGGREGATE SUBGRADE 12"	SQ YD	48058	48058					
208	Z0002600	BAR SPLICERS	EACH	124		124				
* 209	Z0008230	DRILLED SHAFT IN SOIL 30"	FOOT	600		600				
210	Z0013798	CONSTRUCTION LAYOUT	L SUM	1	1					
211	Z0029999	IMPACT ATTENUATOR REMOVAL	EACH	2					2	
212	Z0030150	IMPACT ATTENUATORS (NON-REDIRECTIVE), TEST LEVEL 3	EACH	2					2	
213	Z0030250	IMPACT ATTENUATORS, TEMPORARY (NON-REDIRECTIVE), TEST LEVEL 3	EACH	9					9	
214	Z0030260	IMPACT ATTENUATORS, TEMPORARY (FULLY REDIRECTIVE), NARROW, TEST LEVEL 3	EACH	3					3	
215	Z0030350	IMPACT ATTENUATORS, RELOCATE (NON-REDIRECTIVE), TEST LEVEL 3	EACH	1					1	
216	Z0047300	PROTECTIVE SHIELD	SQ YD	420		420				
217	Z0076600	TRAINEES	hour	2,000	2,000					
218	Z0001058	AGGREGATE SUBGRADE 18"	SQ YD	1528	1528					
219										
220	Z8500100	FABRIC FORMED CONCRETE REVETMENT MATS	SQ YD	300	300					
221	48300410	PCC SHOULDERS 9 1/2"	SQ YD	16,285	16,285					
222	50104650	SLOPE WALL REMOVAL	SQ YD	300	300					
223	63500120	DELINEATOR REMOVAL	EACH	154	154					
224	70301000	WORK ZONE PAVEMENT MARKING REMOVAL	SQ FT	500	500					
225	78300200	RAISED REFLECTIVE PAVEMENT MARKER REMOVAL	EACH	348	348					
	XX004056	MECHANICALLY STABILIZED EARTH RETAINING WALLS	SQ FT	926						926
	60602800	CONCRETE GUTTER, TYPE B	FOOT	77						77
	81020900	CONDUIT PUSHED, 4" DIA, INTERMEDIATE METAL	FOOT	215				215		
	83035400	LIGHT POLE, STEEL, 45 FT. M.H., TENON MOUNT-TWIN	EACH	4				4		
	83600357	LIGHT POLE FOUNDATION METAL, 15" BOLT CIRCLE, 8" X 8"	EACH	4				4		
	83800650	BREAKAWAY DEVICE, COUPLING, WITH STAINLESS STEEL SCREEN	EACH	16				16		

REVISIONS
1-06-2006

Louis Berger & Associates, Inc.
100 Elm Street, Suite 300
Manchester, NH 03101
(603) 544-5200

REVISIONS	
NAME	DATE

ILLINOIS DEPARTMENT OF TRANSPORTATION
I-80 (F.A.I. 80) AT
SENECA ROAD (F.A.P. 623)
GRUNDY COUNTY
SUMMARY OF QUANTITIES

SCALE: VERT. DATE 10/14/05
HORIZ. DRAWN BY NMR/TCH
CHECKED BY DJL/CML

1/15/2006 V:\CHICAGO\DOT\1836\CAD\dwg\1836_SUM_QNTY_05.dwg

* SPECIALTY ITEMS 0 Y080

F.A.I. RTE.	SECTION	COUNTY	TOTAL SHEETS	SHEET NO.
80	32-2HBR	GRUNDY	171	28
STA.		TO STA.		
FED. ROAD DIST. NO.		ILLINOIS	FED. AID PROJECT	
CONTRACT NO. 66412				

SCHEDULE OF QUANTITIES

LIGHTING SCHEDULE

LOCATION	LOCATING UNDERGROUND CABLE FOOT 80300100	ELECTRIC SERVICE INSTALLATION EACH 80400100	GROUNDING ELECTRODE BELOW GRADE EACH 80600200	CONDUIT PUSHED 2" DIA. INT. METAL FOOT 81020500	CONDUIT PUSHED 4" DIA. INT. METAL FOOT 81020900	TRENCH AND BACKFILL ELECTRICAL WORK FOOT 81500200	UNIT DUCT 2 #8 XLP 1#8 XLPG 3/4" P FOOT 81600215	LUMINAIRE SODIUM VAP. HORIZ MOUNT 250 WATT EACH 82102250	LUMINAIRE SODIUM VAP. HIGH MAST MULTI MOUNT 400 WATT EACH 82105400	LIGHTING CONTROLLER CB-RCS 60A 480 VOLT EACH 82500520	LIGHT POLE STEEL 45' M.H. TENON MOUNT-TWIN EACH 83035400	LIGHT TOWER 100 FT MH LUMINAIRE MT. 4 EACH 83502300	LIGHT TOWER FOUNDATION 48" DIA. FOOT 83700100	LIGHT POLE FOUNDATION METAL 15" BC, 8" X 8" EACH 83600357	BREAKAWAY DEVICE COUPLING SS SCREEN EACH 83800650	
F.A.I. 80																
805+41.00, 105' LT									4			1	14			
820+60.23, 67.5' LT TO 67.5' RT				135												
834+23.00, 113' LT									4			1	14			
F.A.P. 623 (SENECA ROAD)																
13+44.00, 60.0' RT								2			1			1	4	
13+52.00, 42.5' LT TO 42.5' RT					85											
14+59.31, 116.08' LT										1						
14+68.00, 53.0' LT								2			1			1	4	
23+47.00, 32.5' LT TO 32.5' RT					65											
23+71.00, 53.0' RT								2			1			1	4	
24+95.00, 65.3' LT								2			1			1	4	
RAMP B																
151+35.00, 32.5' LT TO 32.5' RT				65												
RAMP C																
220+76.00, 32.5' LT TO 32.5' RT				65	65											
TOTALS	150	1	1	265	215	4650	5115	8	8	1	4	2	28	4	16	

LIGHTING REMOVAL SCHEDULE

LOCATION	REMOVAL EX. LIGHTING UNIT SALVAGE EACH 84200500	LIGHTING FOUNDATION REMOVAL, PARTIAL EACH 84200705	REMOVAL LIGHTING CONTROLLER EACH 84500110	REMOVAL ELECTRIC INSTALLATION EACH 84500120	REMOVAL LIGHTING CONTROLLER FOUNDATION EACH 81400130	REMOVE EXISTING HIGH MAST LIGHT TOWER EACH X8420220
F.A.P. 623 (SENECA ROAD)						
10+80.82, 63.14' LT				1		
10+93.52, 63.39' LT			1		1	
15+05.11, 55.96' LT						
15+22.08, 41.12' LT	4	1				1
23+62.83, 40.63' LT	4	1				1
RAMP C						
209+74.77, 23.84' RT	4	1				1
RAMP D						
260+88.30, 28.90' RT	4	1				1
TOTALS	16	4	1	1	1	4

ENTIRE SHEET REVISED

REVISIONS	
NAME	DATE

ILLINOIS DEPARTMENT OF TRANSPORTATION
**I-80 (F.A.I. 80) AT
 SENECA ROAD (F.A.P. 623)
 GRUNDY COUNTY**
 SCHEDULE OF QUANTITIES

SCALE: N.T.S.
 DATE 10/14/05

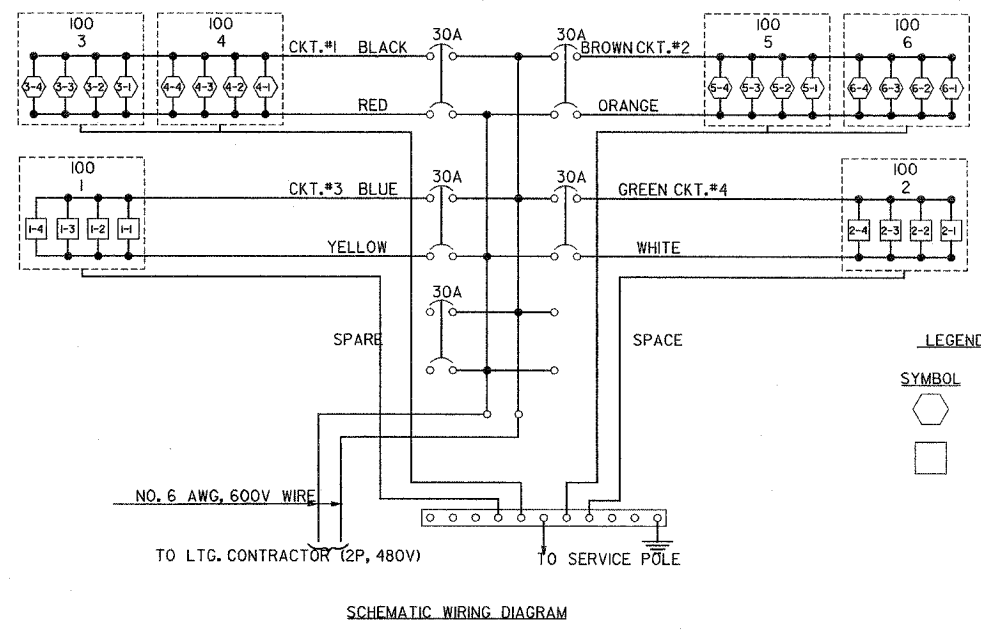
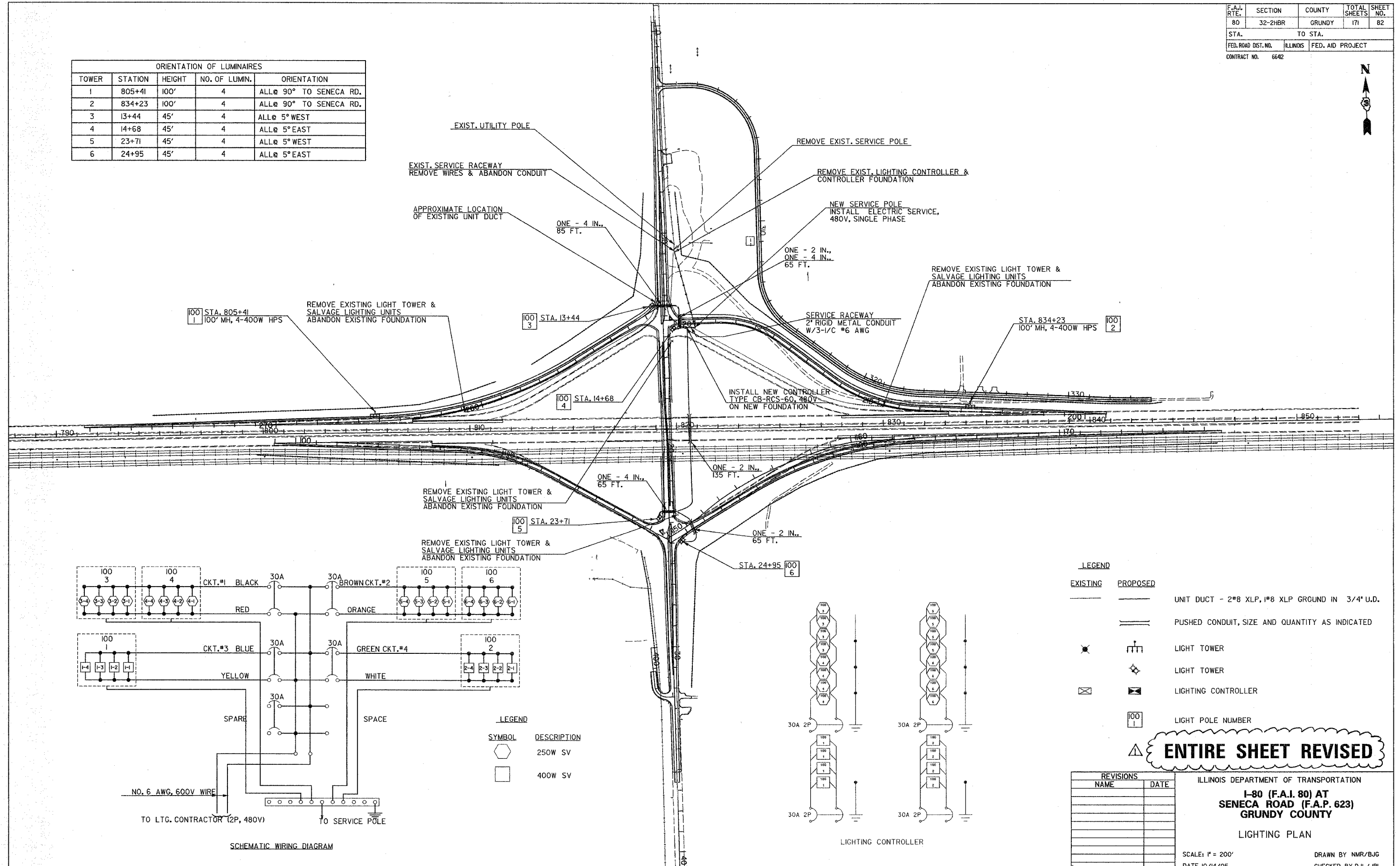
DRAWN BY NMR/BJG
 CHECKED BY DJL/JPL

REVISED 1-6-06 MJ

F.A.I. RTE.	SECTION	COUNTY	TOTAL SHEETS	SHEET NO.
80	32-2HBR	GRUNDY	171	82
STA.		TO STA.		
FED. ROAD DIST. NO.		ILLINOIS	FED. AID PROJECT	
CONTRACT NO. 6642				



ORIENTATION OF LUMINAIRES				
TOWER	STATION	HEIGHT	NO. OF LUMIN.	ORIENTATION
1	805+41	100'	4	ALL @ 90° TO SENECA RD.
2	834+23	100'	4	ALL @ 90° TO SENECA RD.
3	13+44	45'	4	ALL @ 5° WEST
4	14+68	45'	4	ALL @ 5° EAST
5	23+71	45'	4	ALL @ 5° WEST
6	24+95	45'	4	ALL @ 5° EAST

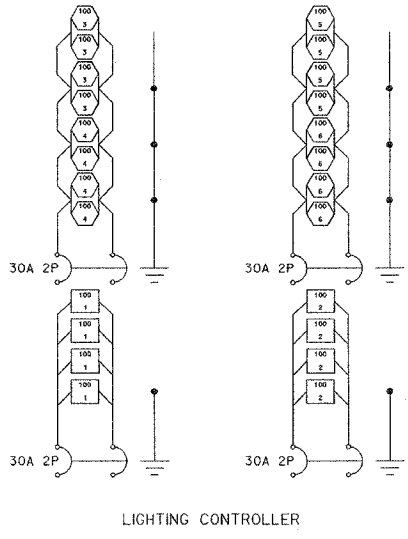


LEGEND

SYMBOL	DESCRIPTION
	250W SV
	400W SV

LEGEND

EXISTING	PROPOSED	DESCRIPTION
		UNIT DUCT - 2*8 XLP, 1*8 XLP GROUND IN 3/4" U.D.
		PUSHED CONDUIT, SIZE AND QUANTITY AS INDICATED
		LIGHT TOWER
		LIGHT TOWER
		LIGHTING CONTROLLER
		LIGHT POLE NUMBER



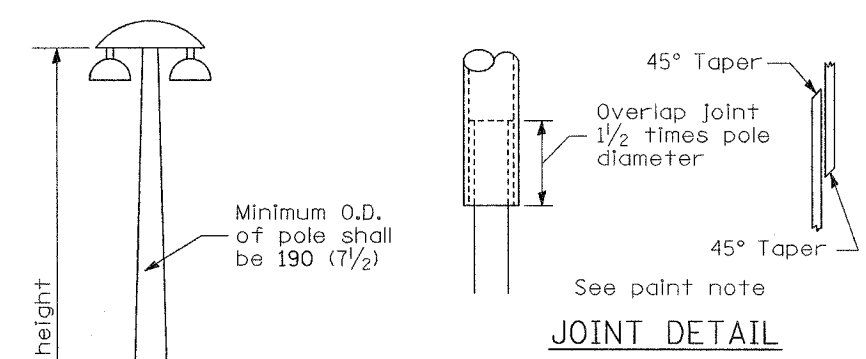
ENTIRE SHEET REVISED

REVISIONS	
NAME	DATE

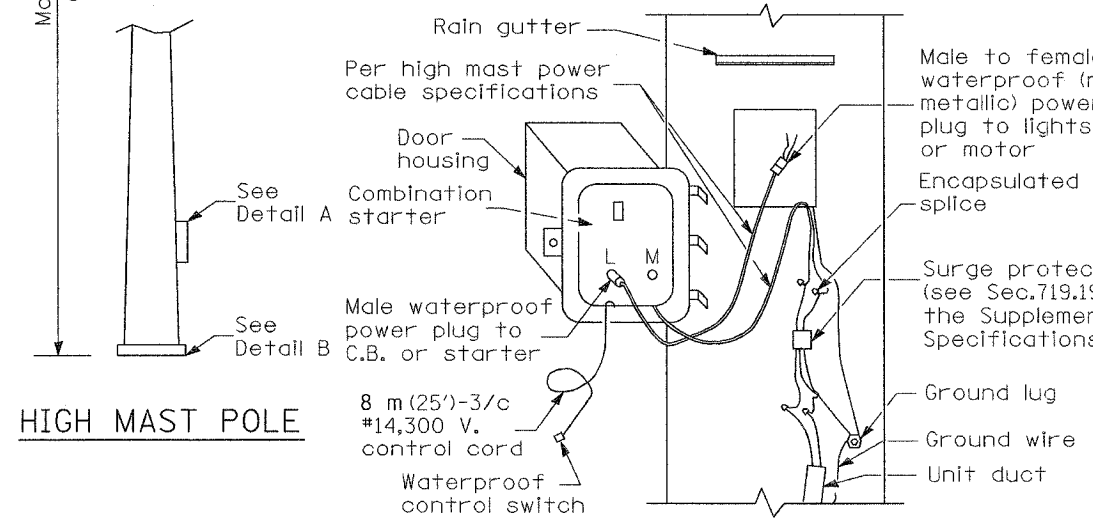
ILLINOIS DEPARTMENT OF TRANSPORTATION
**I-80 (F.A.I. 80) AT
 SENECA ROAD (F.A.P. 623)
 GRUNDY COUNTY**
 LIGHTING PLAN
 SCALE: 1" = 200'
 DATE 10/14/05
 DRAWN BY NMR/BJG
 CHECKED BY DJL/JPL

REVISED 1-6-06 MJ

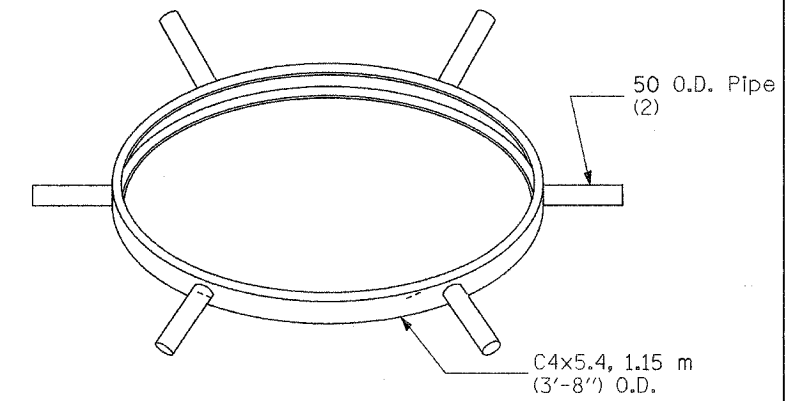
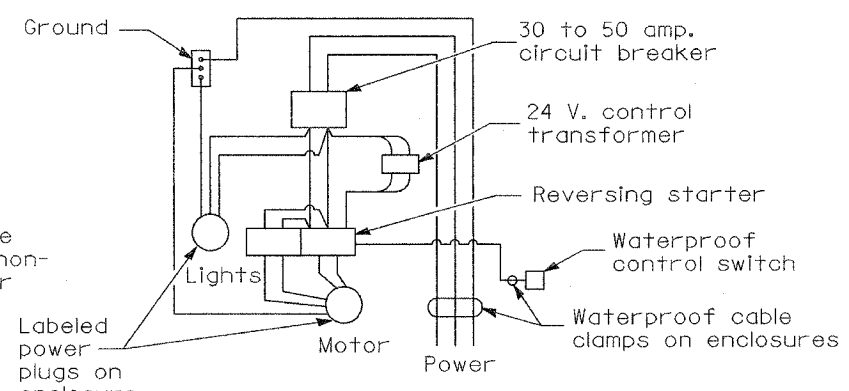
F.A.I. RTE.	SECTION	COUNTY	TOTAL SHEETS	SHEET NO.
80	32-2HBR	GRUNDY	171	84
STA.		TO STA.		
FED. ROAD DIST. NO.	ILLINOIS	FED. AID PROJECT		
CONTRACT NO.		66412		



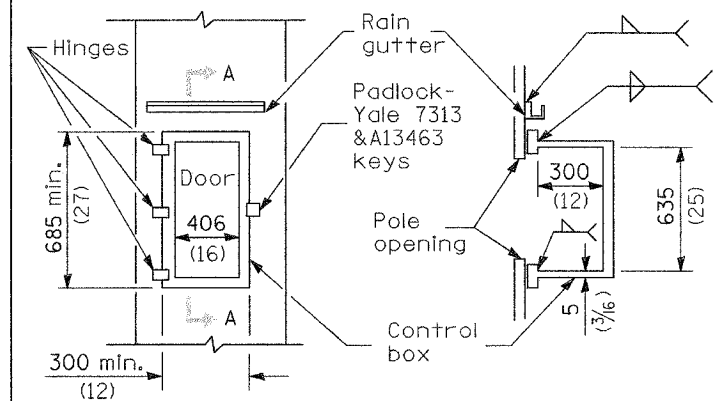
PAINT NOTE:
All poles shall be painted at the overlap joints. Male & female sections shall be painted in accordance with Section 719.10b of the Standard Specifications for Road and Bridge Construction.



HIGH MAST POLE WIRING DETAIL



LOWERING RING, DOWN LIGHT UNITS

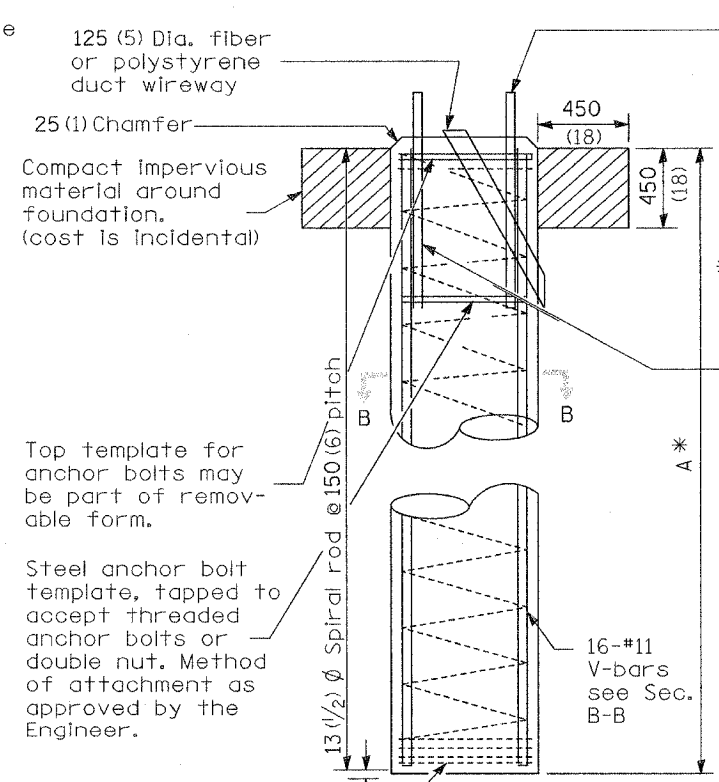
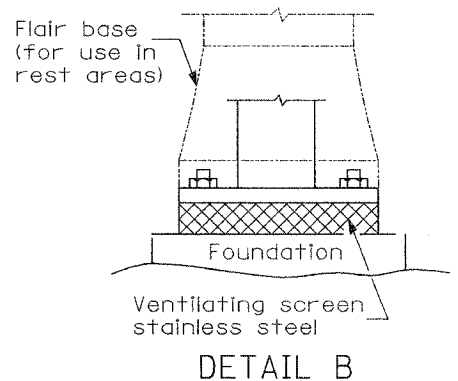
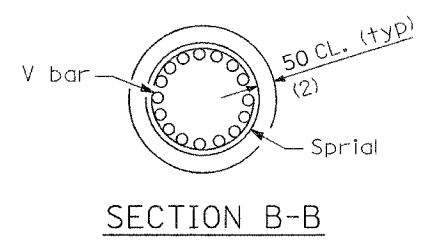


DETAIL A

Handhole size for highmast poles shall be min. .21 m² (2.25 sq. ft.)

SECTION A-A

Dimensions are approximate (see Special Provisions)



HIGH MAST POLE FOUNDATION

HIGH MAST TABLE		
TOWER	STATION	DIM. A*
100 1	805+41	14'
100 2	834+23	14'

LEGEND	
REVISIONS	
1-6-06	

DATE	REVISIONS

LIGHT TOWER AND FOUNDATION

vi=dlight

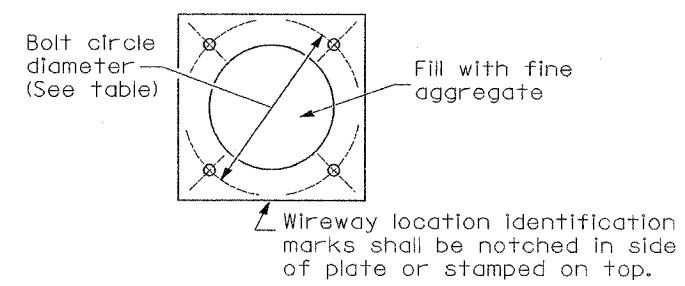
REVISED 1-6-06 MJ

LGT009vb2.M32

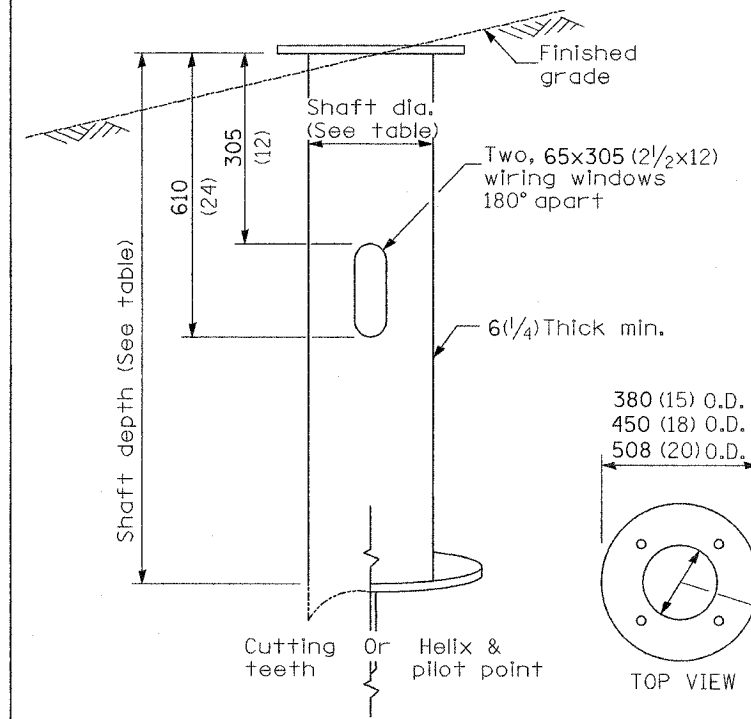
F.A.I. RTE.	SECTION	COUNTY	TOTAL SHEETS	SHEET NO.
80	32-2HBR	GRUNDY	171	84A
STA.		TO STA.		
FED. ROAD DIST. NO.		ILLINOIS	FED. AID PROJECT	
CONTRACT NO. 66412				

LIGHT POLE MOUNTING HEIGHT	BOLT CIRCLE DIAMETER	STEEL FOUNDATION			CONCRETE FOUNDATION		
		SHAFT DIAMETER	SHAFT DEPTH	TOP PLATE (min)	SHAFT DIAMETER	SHAFT DEPTH	ANCHOR ROD LENGTH ①
<9.1 m (30')	292 (11.5)	220 (8 5/8)	1.83 m (6')	300 x 300 x 25 12 x 12 x 1	610 (24)	1.52 m (5'-0")	1.45 m (4'-9")
9.4 m - 10.7 m (31'-35')	292 (11.5)	220 (8 5/8)	1.83 m (6')	300 x 300 x 25 12 x 12 x 1	610 (24)	1.67 m (5'-6")	1.60 m (5'-3")
10.9 m - 12.2 m (36'-40')	381 (15) ③	220 (8 5/8)	1.83 m (6') ②	375 x 375 x 31 15 x 15 x 1 1/4	762 (30)	1.83 m (6'-0")	1.75 m (5'-9")
12.5 m - 13.7 m (41'-45')	381 (15) ③	220 (8 5/8)	1.83 m (6') ②	375 x 375 x 31 15 x 15 x 1 1/4	762 (30)	1.98 m (6'-6")	1.90 m (6'-3")
14.0 m - 15.2 m (46'-50')	381 (15) ③	220 (8 5/8)	2.44 m (8')	375 x 375 x 31 15 x 15 x 1 1/4	762 (30)	2.13m (7'-0")	2.00 m (6'-9")

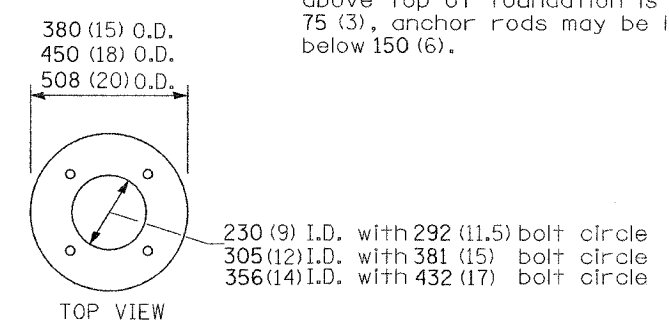
- ① Length does not include 100(4)hook
- ② 220 mm x 2.44 m (8 5/8" x 8'-0") for Twin luminaires
- ③ Bolt circle diam. shall be 430 (17) when a TB3-17 transformer base is used



Length above foundation shall be adjusted to accommodate breakaway devices furnished by the contractor for a specific installation.



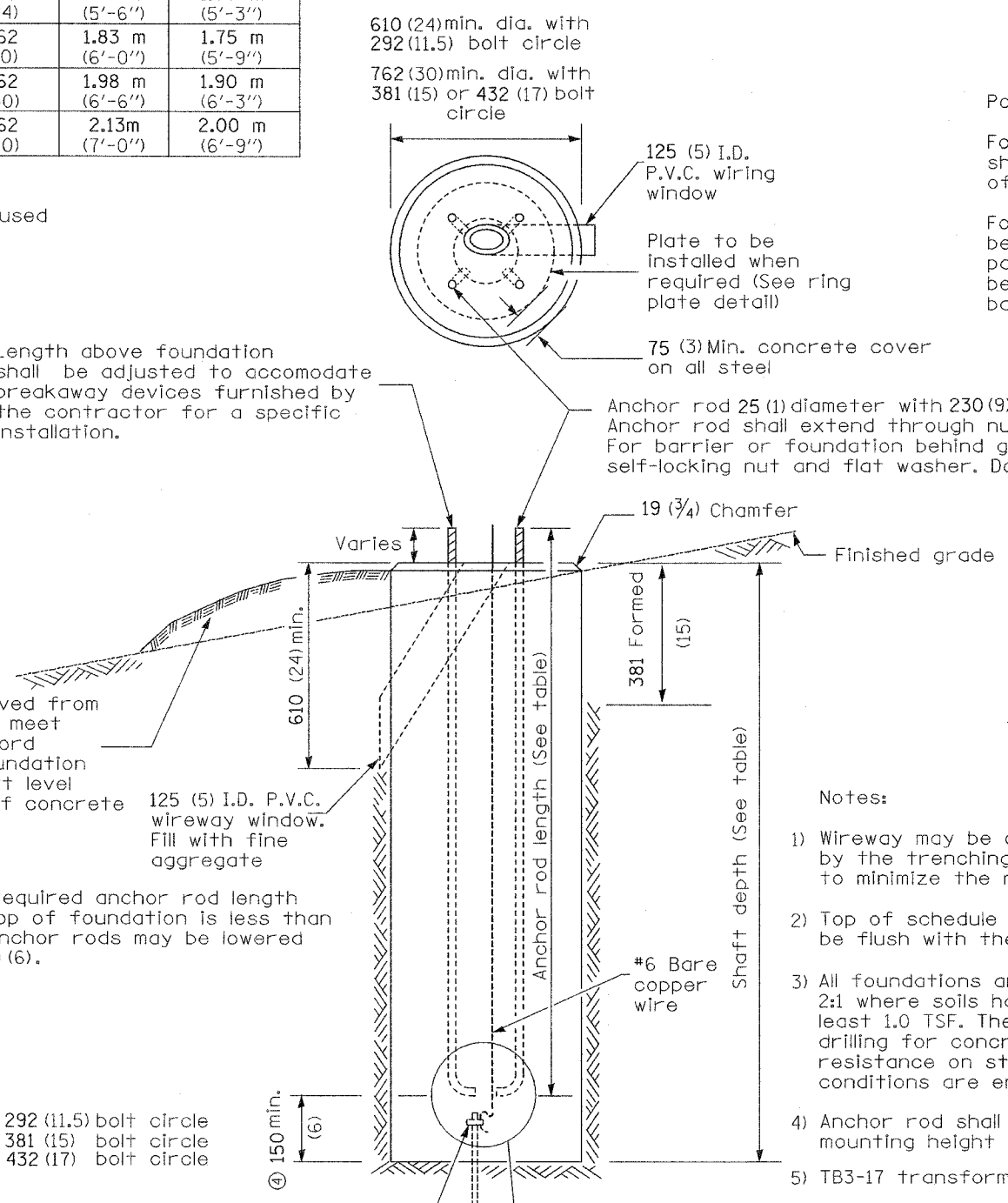
STEEL FOUNDATION



RING PLATE DETAIL
(When rock is encountered and foundation is shallower)

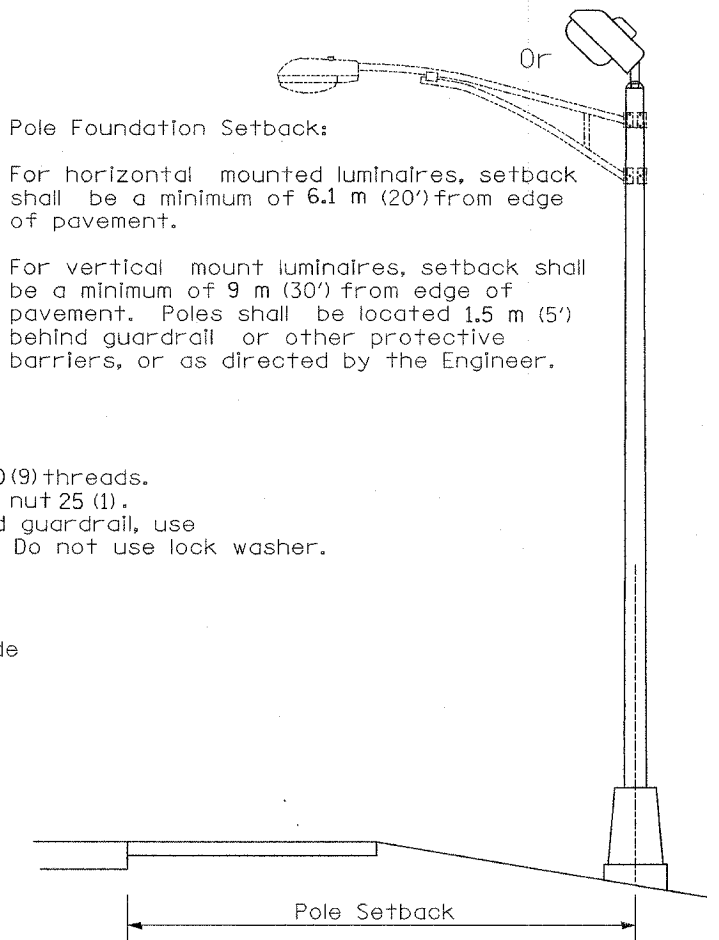
Use dirt removed from foundation to meet 1.52m (5 ft.) chord fill around foundation top. Grade dirt level with bottom of concrete chamfer.

- ④ If the required anchor rod length above top of foundation is less than 75 (3), anchor rods may be lowered below 150 (6).



CONCRETE FOUNDATION

Pole Foundation Setback:
For horizontal mounted luminaires, setback shall be a minimum of 6.1 m (20') from edge of pavement.
For vertical mount luminaires, setback shall be a minimum of 9 m (30') from edge of pavement. Poles shall be located 1.5 m (5') behind guardrail or other protective barriers, or as directed by the Engineer.



- Notes:
- Wireway may be on front, back or side of foundation as required by the trenching. Place door of transformer base on wireway side to minimize the number of unit duct bends.
 - Top of schedule 40 125 (5) I.D. PVC wiring window, shall be flush with the top of foundation for drainage.
 - All foundations are designed to be located on slopes not exceeding 2:1 where soils have an unconfined compressive strength of at least 1.0 TSF. The contractor shall verify the soil strength during drilling for concrete foundations or by monitoring installation resistance on steel foundations and notify the engineer if other conditions are encountered.
 - Anchor rod shall be increased to 31 (1 1/4) diameter for 15.24 (50') mounting height or above.
 - TB3-17 transformer base is not to be used on metal foundation

All dimensions are in millimeters (inches) unless otherwise shown.

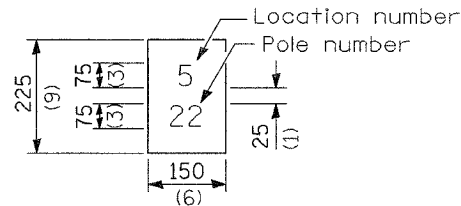
DATE	REVISIONS
10/7/02	Bridge Office depth calc.

LIGHT POLE FOUNDATION

LGT007-836

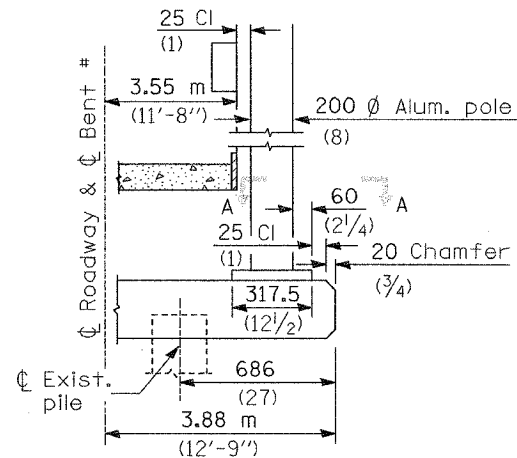
"Install and orient arm bracket over pole tenon and firmly hand tighten the two set screws. Use third hole in arm bracket as a guide to drill a 8.3 (2/64) diameter hole through tenon. Install and tighten self-tapping screw. Tighten set screws an additional (1/4 to 3/8) turn with hex key (not provided). Install locknuts on set screws if threaded projection allows."

Pole shall meet AASHTO Standard Specifications for 128.72 km (80 mph) wind loading and 40.82 kg (90 lb.), .37 m² (4.0 sq. ft.) E.P.A. luminaire.

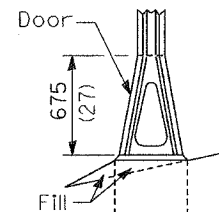


The contractor shall furnish and install a light pole identification of each new light pole, as shown above, incidental to the respective light pole pay item. The numerals shall be 75 (3) series "D", black, screened on silver-white type B pressure sensitive reflective sheeting conforming to the requirements of section T602.01 of the Standard Specifications for Traffic Control Items. The numerals shall conform to the FHWA "Standard Alphabets for Highway Signs".

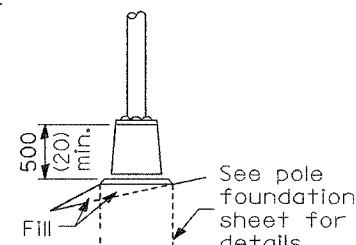
The light pole identification shall be applied to sign base material as specified in section 1085.05 of the Standard Specifications, approximately 180 (7) above the adjacent pavement grade visible to approaching traffic in accordance with Highway Standard 2319.



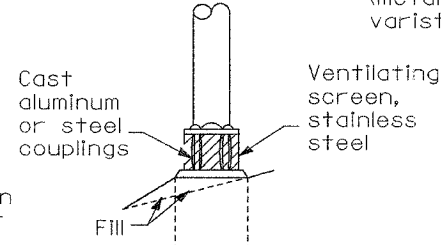
BENT #
(Looking)



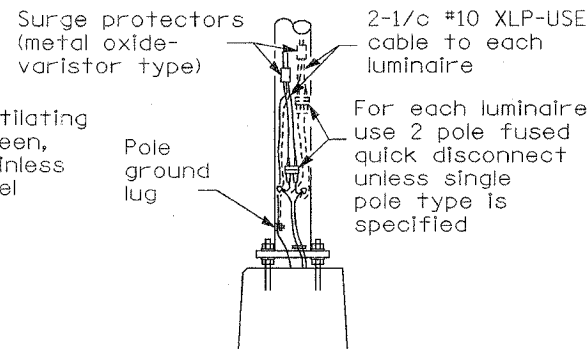
STAINLESS STEEL FLAIR BASE



TRANSFORMER BASE



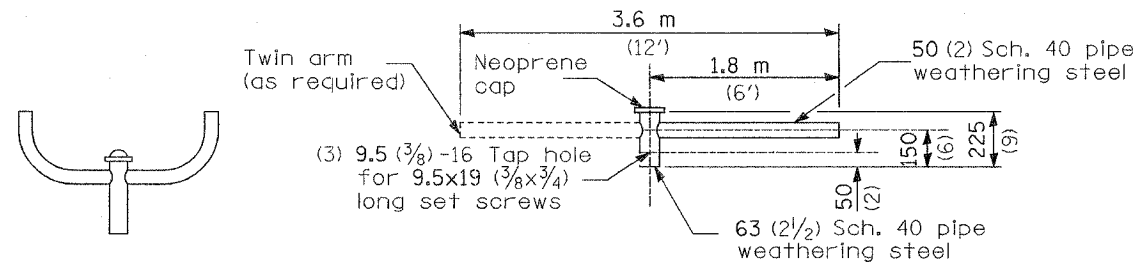
BREAKAWAY COUPLING



ANCHOR

METAL OR CONCRETE

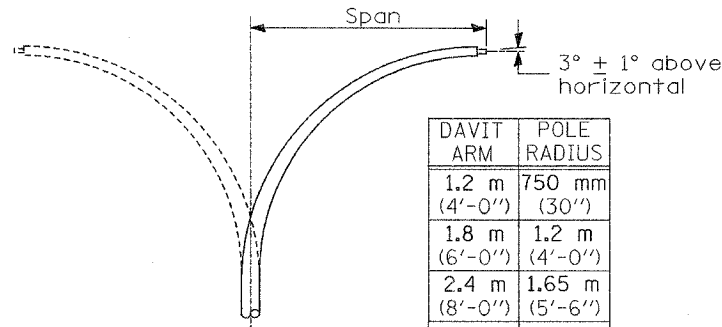
Details for underground distribution if required



TWIN TENON

TENON MOUNT BRACKET ARM

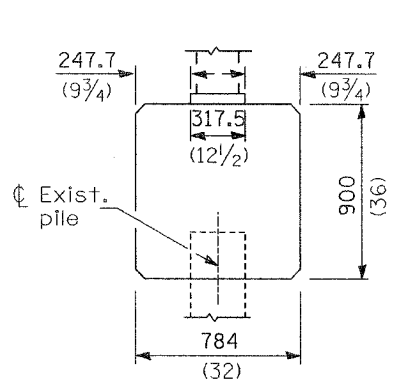
NOTE: Single or twin arm assembly shall be tilted 3° above horizontal.



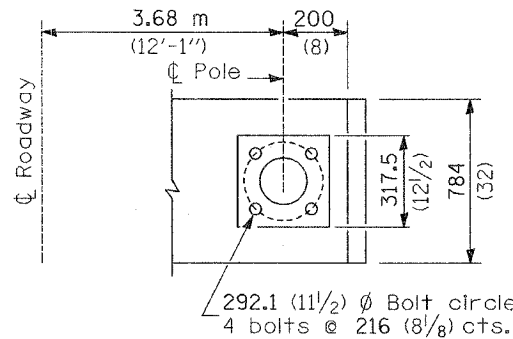
DAVIT ARM

DAVIT ARM-TWIN

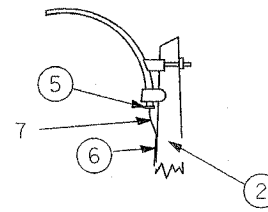
DAVIT ARM	POLE RADIUS
1.2 m (4'-0")	750 mm (30")
1.8 m (6'-0")	1.2 m (4'-0")
2.4 m (8'-0")	1.65 m (5'-6")
3.6 m (12'-0")	1.65 m (5'-6")



BRIDGE PIER MOUNT

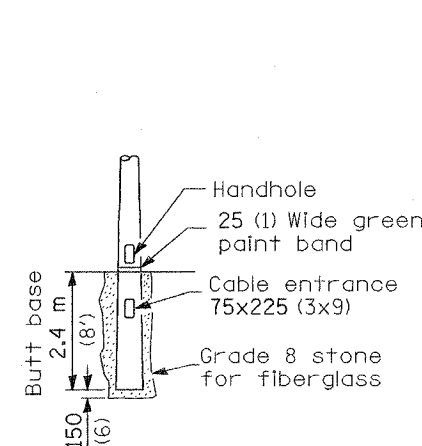


SECTION A-A

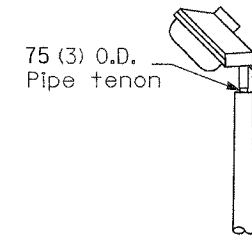


MAST ARM

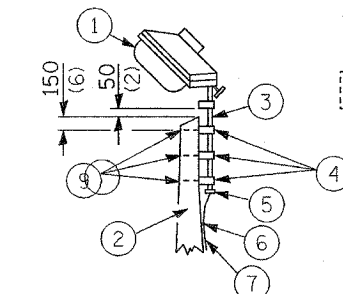
- 1 Luminaire
- 2 Wood pole, class 3 or better
- 3 63 (2 1/2) Galv. steel conduit
- 4 Single offset pole band
- 5 Conduit bushing
- 6 Cable clamps on 600 (24) centers
- 7 2/c #12 Type use cable
- 8 25 (1) Galv. steel conduit 3.0 m (10') in length



BUTT BASE



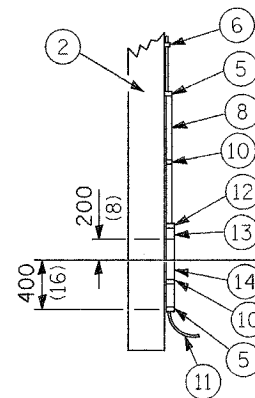
TENON



SHORT BRACKET

SHORT BRACKET - TWIN

- 9 16 (5/8) Ø hot dipped galvanized bolt with flat washer & locknut (3 req'd)
- 10 Conduit clamps on 900 (36) centers
- 11 Unit duct
- 12 Threaded reducer
- 13 "C" Condulet, threaded
- 14 40 (1 1/2) Galv. steel conduit for 1 unit duct or 75 (3) galv. steel conduit for 2 or 3 unit ducts.



POLE, WOOD

POLE LENGTH	DEPTH IN GROUND
19.8 m (65')	3.6 m (12')
18.0 m (60')	3.0 m (10')
16.8 m (55')	2.7 m (9')
16.0 m (50')	2.4 m (8')
13.7 m (45')	2.1 m (7')
12.0 m (40')	2.0 m (6.5')
10.7 m (35')	1.8 m (6')
9.0 m (30')	1.7 m (5.5')

All dimensions are in millimeters (inches) unless otherwise shown.

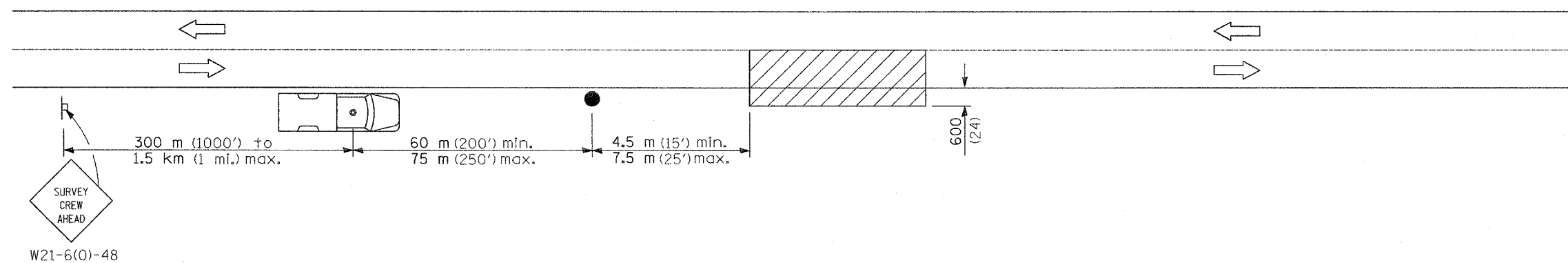
DATE	REVISIONS

POLE STANDARDS

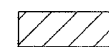
▲ ADDED SHEET 1-6-06 MJ

LGTO08.M32

F.A.I. RTE.	SECTION	COUNTY	TOTAL SHEETS	SHEET NO.
80	32-2HBR	GRUNDY	171	84C
STA.		TO STA.		
FED. ROAD DIST. NO.	ILLINOIS	FED. AID PROJECT		
CONTRACT NO. 66412				



SYMBOLS



Work area



Sign on portable or permanent support



Truck with flashing amber light and dual emergency flashers



Flagger with traffic control sign

TYPICAL APPLICATIONS
Utility operations

All dimensions are in millimeters (inches) unless otherwise shown.

DATE	REVISIONS

DETAIL FOR
NIGHTTIME LIGHTING
INSPECTION

ADDED SHEET 1-6-06 MJ

LGTO17.M32

F.A.P.	SECTION	COUNTY	TOTAL SHEETS	SHEET NO.
623	32-2 HBR	GRUNDY	171	92
Sta.	TO Sta.			
FED. ROAD DIST. NO.	ILLINOIS	FED. AID PROJECT		
CONTRACT NO. 66412				
SHEET W01 OF W02				

HIGHWAY CLASSIFICATION
Route: Seneca Road (FAP 0623)
Class: Minor Arterial
ADT: 1,960 (2000)
ADT: 3,610 (2024)
DHV: 361
ADTT: 310 (2000)
ADTT: 550 (2024)
Design Speed: 60 mph
Posted Speed 45 mph

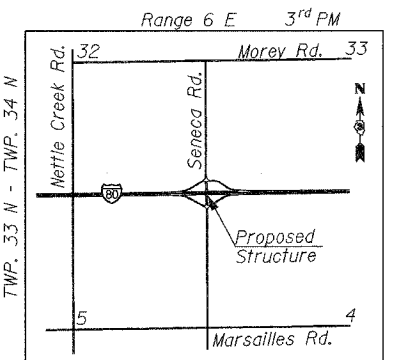
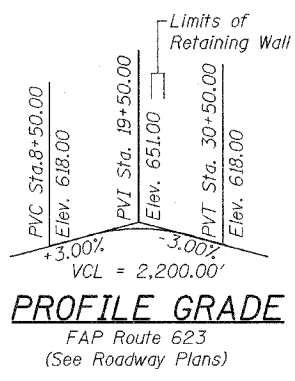
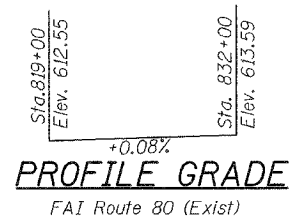
Route: FAI 80
Design Speed: 70 mph
Posted Speed 65 mph
ADT: 23,700 (1999)
ADT: 42,600 (2024)
DHV: 4260
ADTT: 7,100 (1999)
Class: Interstate

DESIGN SPECIFICATIONS
2002 AASHTO Standard Specifications for Highway Bridges

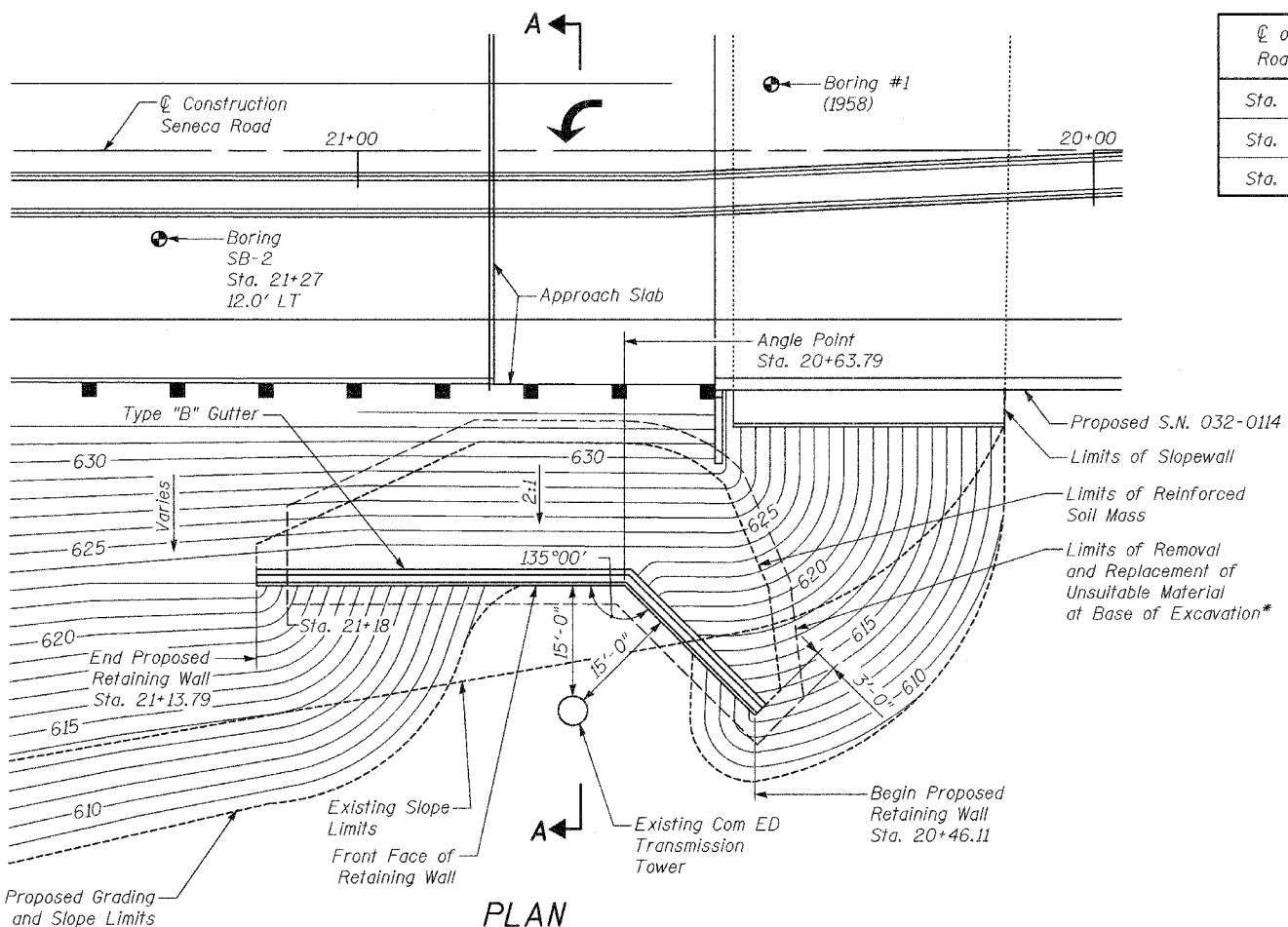
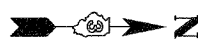
SEISMIC DATA
S.P.C. = A
A = 0.04g
S = 1.0

DESIGN STRESSES

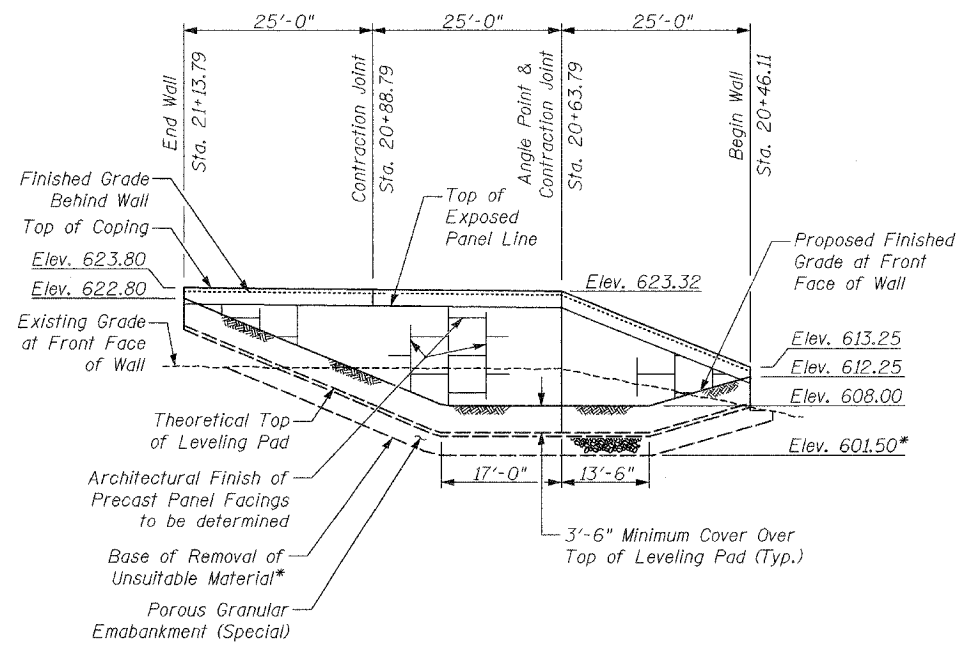
FIELD UNITS
f'c = 4,500 psi (MSE Panels)
f'c = 3,500 psi (Leveling Slab)
fy = 60,000 psi (Reinf.)



LOCATION SKETCH



PLAN



UNFOLDED WALL ELEVATION

All longitudinal dimensions are along the front face of precast MSE wall panels

STATION / OFFSET TABLE

℄ of Seneca Road Station	Offset (Left) to Front Face of MSE Wall
Sta. 20+46.11	76.76'
Sta. 20+63.79	59.08'
Sta. 21+13.79	59.08'

GENERAL NOTES

See Special Provisions for Mechanically Stabilized Earth Retaining Wall design and construction requirements.

The Contractor shall coordinate the construction of the MSE Wall with the construction of the bridge (SN 032-0114) to allow for Structure Excavation for the MSE Wall without need for a temporary soil retention system.

Over-excavation will not be measured for payment, and shall be backfilled with the same material specified for roadway embankment or with granular material.

*The limits and quantities of removal and replacement shown are based on the boring data and may be modified by the District Geotechnical and Field Engineers for variable subsurface conditions encountered in the field.

TOTAL BILL OF MATERIAL

Item	Unit	Total
Structure Excavation	Cu. Yd.	590
Removal and Disposal of Unsuitable Material	Cu. Yd.	179
Porous Granular Embankment (Special)	Cu. Yd.	179
Mechanically Stabilized Earth Retaining Walls	Sq. Ft.	926
Type "B" Gutter	Foot	77

APPROVED
FOR STRUCTURAL ADEQUACY ONLY

Robert E. Adams
ENGINEER OF BRIDGES AND STRUCTURES



J. Hernandez
12-30-05
Professional Engineer No. 11-00100, 06

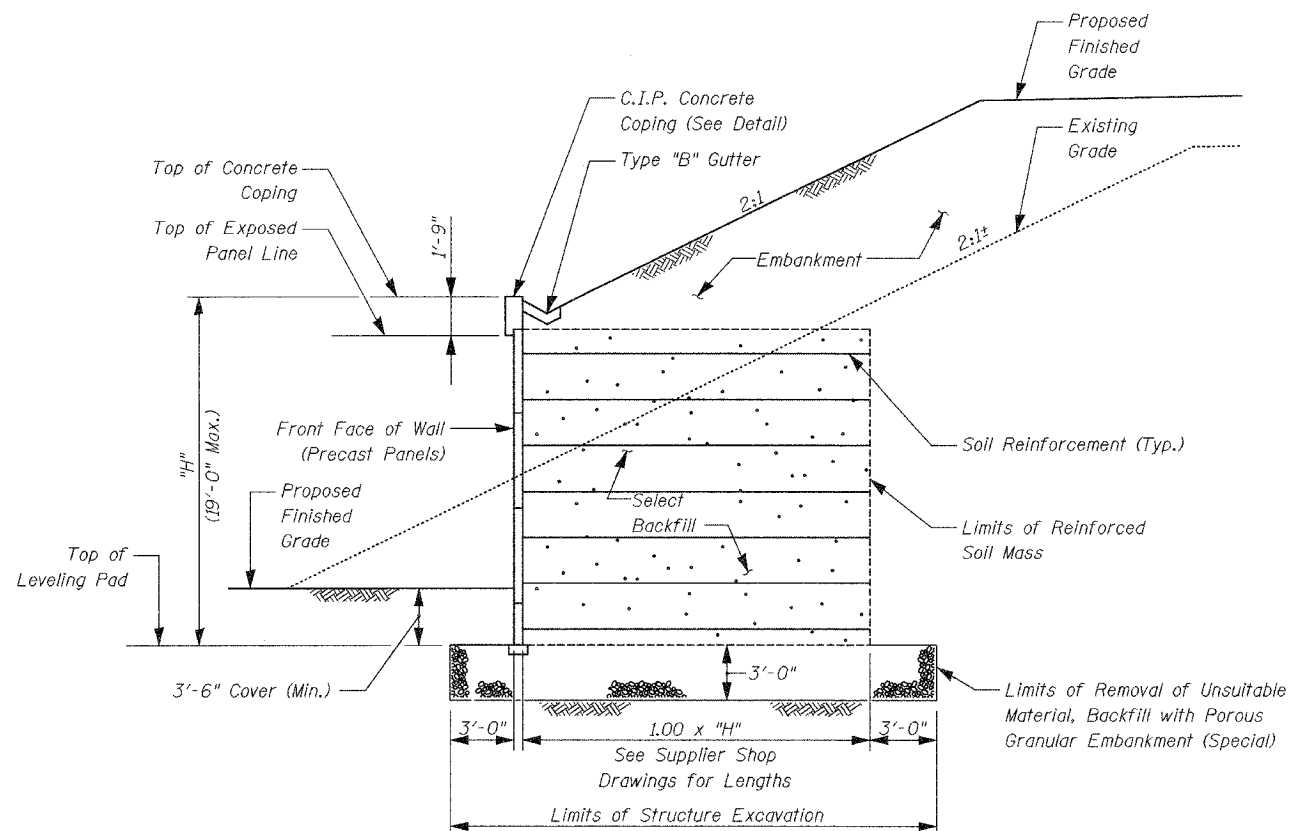
Notes:
See Sheet W02 of W02 for Section A-A.
See Sheet S19 for boring log of Boring SB-2.

Louis Berger & Associates, Inc.
1001 Elm Street, Suite 300
Manchester, NH 03101

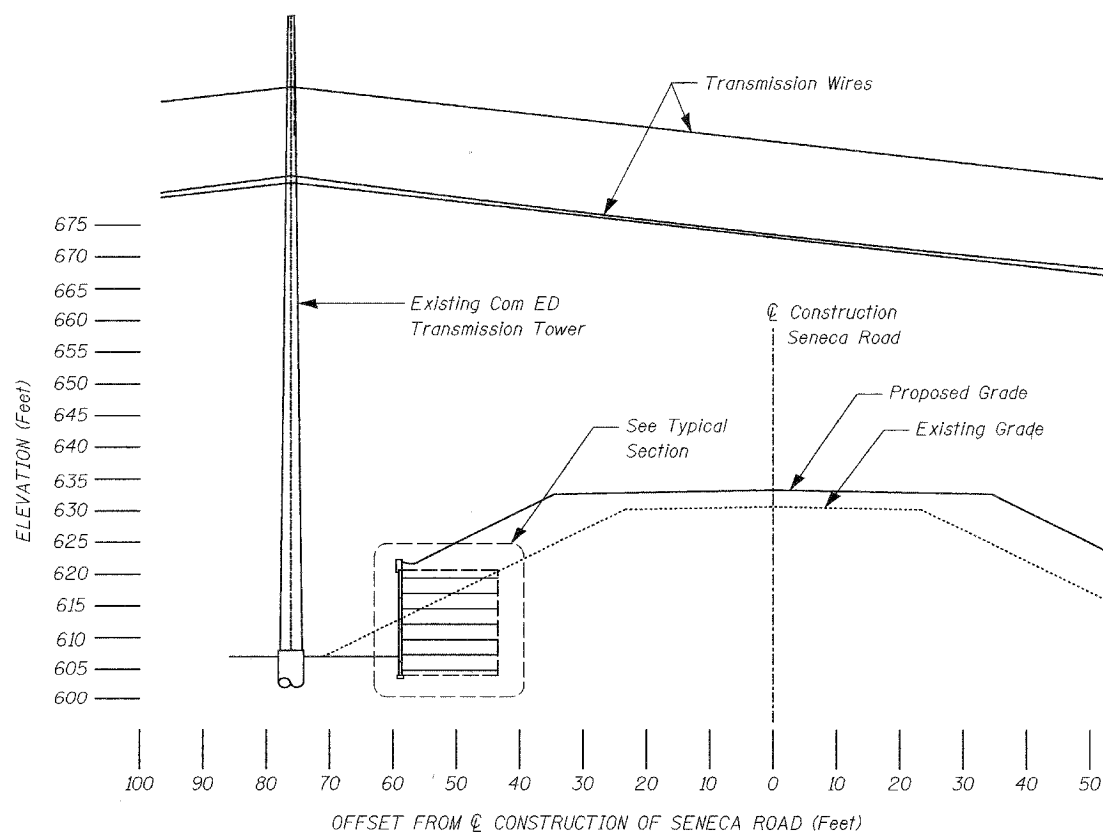
REVISIONS	NAME	DATE

ILLINOIS DEPARTMENT OF TRANSPORTATION
M.S.E. RETAINING WALL
SENECA ROAD OVER F.A.I. 80
F.A.P. 623 SEC. 32-2 HBR GRUNDY CO.
STRUCTURE NO. 032-W001
STA 20+46.11 TO STA 21+13.79
GENERAL PLAN & ELEVATION
SCALE: NONE
DATE: DECEMBER, 2005
DRAWN BY: NJH
CHECKED BY: JLG

F.A.P.	SECTION	COUNTY	TOTAL SHEETS	SHEET NO.
623	32-2 HBR	GRUNDY	171	93
STA.	TO STA.			
FED. ROAD DIST. NO.	ILLINOIS	FED. AID PROJECT		
CONTRACT NO. 66412				
SHEET W02 OF W02				

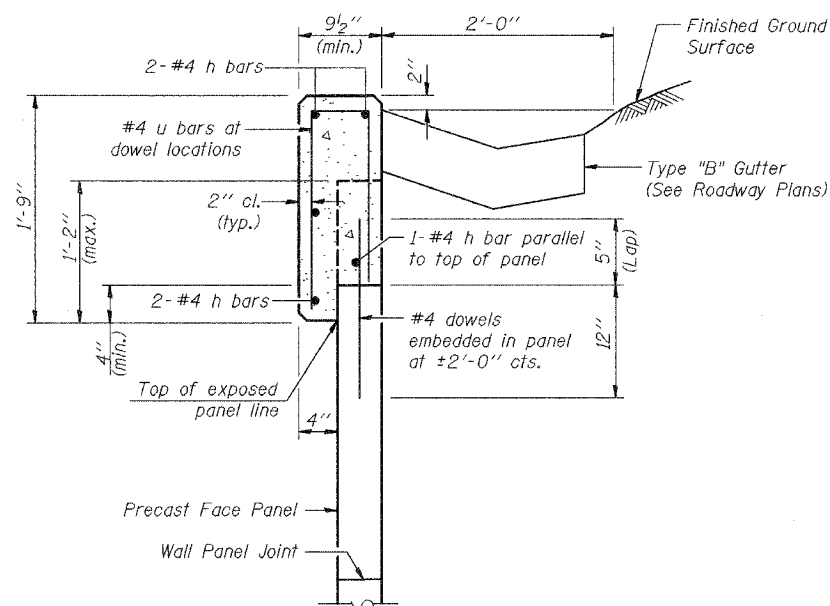


TYPICAL SECTION



SECTION A-A

STA. 20+71



CAST-IN-PLACE COPING DETAIL

Soil Reinforcement Not Shown

Notes:
Cast-in-place concrete coping may be substituted with a precast concrete coping as approved by the Engineer.



JOSE L. HERNANDEZ
081-008668
12-30-05
LICENSE EXPIRES 11-30-2006

REVISIONS	
NAME	DATE

ILLINOIS DEPARTMENT OF TRANSPORTATION
M.S.E. RETAINING WALL
SENECA ROAD OVER F.A.I. 80
F.A.P. 623 SEC. 32-2 HBR GRUNDY CO.
STRUCTURE NO. 032-W001
STA 20+46.11 TO STA 21+13.79
RETAINING WALL DETAILS

SCALE: NONE
DATE: DECEMBER, 2005
DRAWN BY: NJH
CHECKED BY: JLG

Louis Berger & Associates, Inc.
1001 Elm Street, Suite 300
Manchester, NH 03101

Added Sheet 1-6-06 JLG

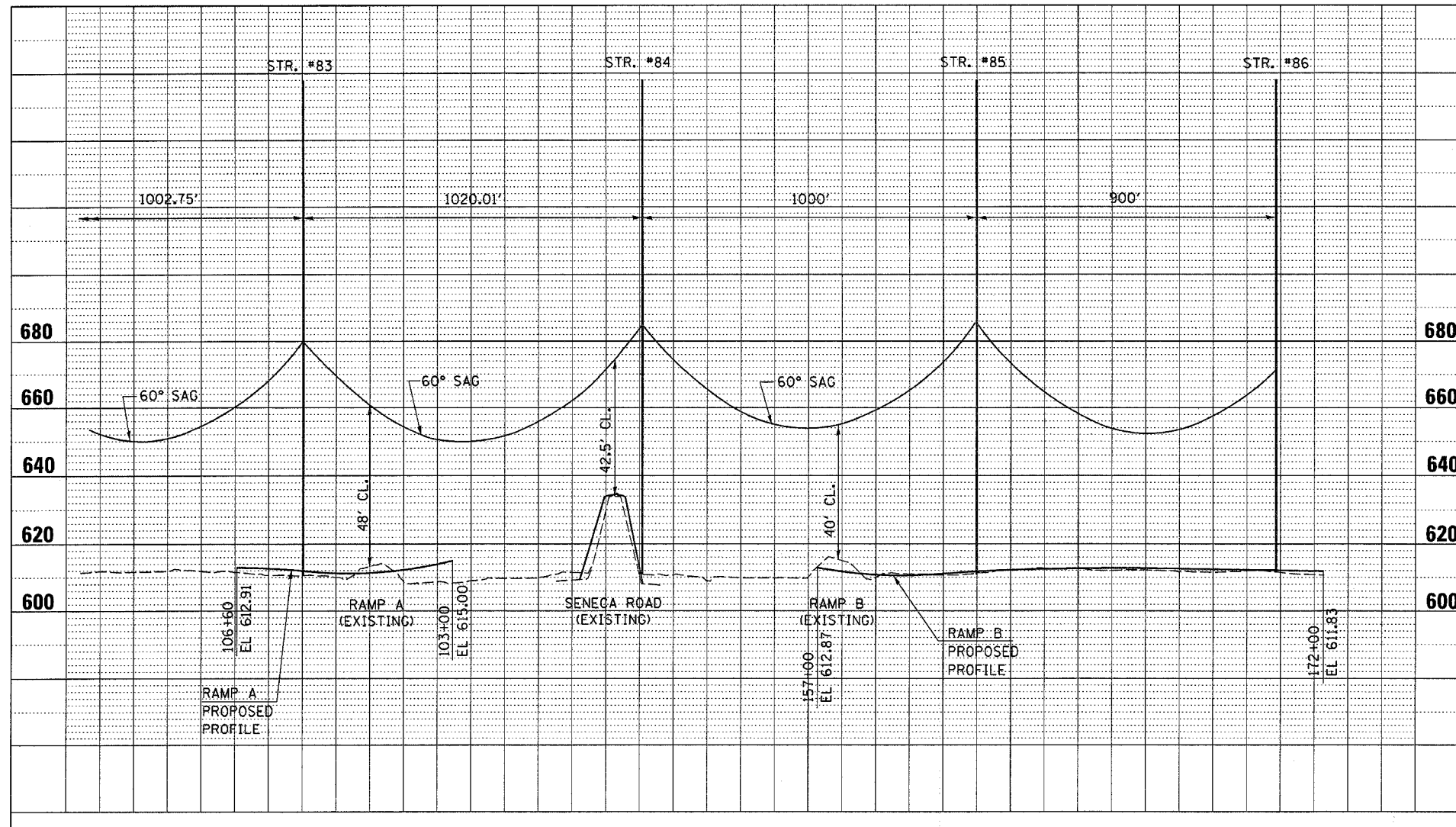
P.A. DIST.	SECTION	COUNTY	TOTAL SHEETS	SHEET NO.
80	*	GRUNDY		171C
STA.		TO STA.		
FED. ROAD DIST. NO.		BLINDS	FED. AID PROJECT	

CONTRACT NO. 66412

LINE SAG VS. TEMPERATURE								
STRINGING SAG TABLE USING FINAL SAG AT SENECA ROAD								
RULING SPAN:	1320.0 FEET	345 Kv L0101 / L0102						
CONDUCTOR	1277.0 KCMIL	54 / 7 STRANDING ACAR						
NESC HEAVY LOAD ZONE	MAX TENSION = 20339 LB							
DESIGN:	11000. LB @ 0. DEG F, .50 IN ICE, 4.00 PSF WIND, INITIAL							
H TENS (LBS)	4611.	4555.	4501.	4449.	4399.	4350.	4303.	4257.
TEMP. F	50°	60°	70°	80°	90°	100°	110°	120°
SAG (FT)								
1000' SPAN POLE #84 TO #85	32 - 7	33 - 0	33 - 5	33 - 9	34 - 2	34 - 7	34 - 11	34 - 4
1020' SPAN POLE #83 TO #84	33 - 11	34 - 4	34 - 9	35 - 2	35 - 7	35 - 11	36 - 4	36 - 9

SAG CALCULATED IN FEET - IN.
INFORMATION PROVIDED BY COMED.

ELEVATIONS FROM COMED



LEGEND

△	REVISIONS	☁
	1-6-06	

REVISIONS	
NAME	DATE
MJ	12-29-05

ILLINOIS DEPARTMENT OF TRANSPORTATION
**345 KV COM ED
TRANSMISSION LINES**

FOR INFORMATION ONLY

SCALE: VERT. DRAWN BY
 HORIZ. CHECKED BY
DATE

REVISED 1-6-06 MJ