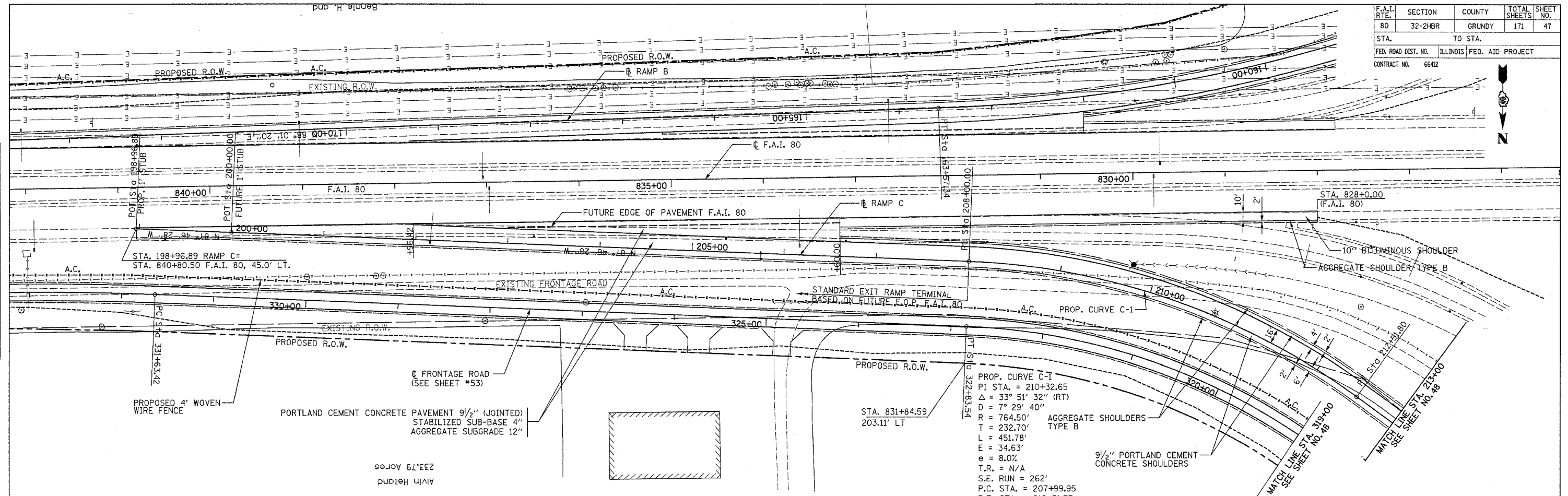
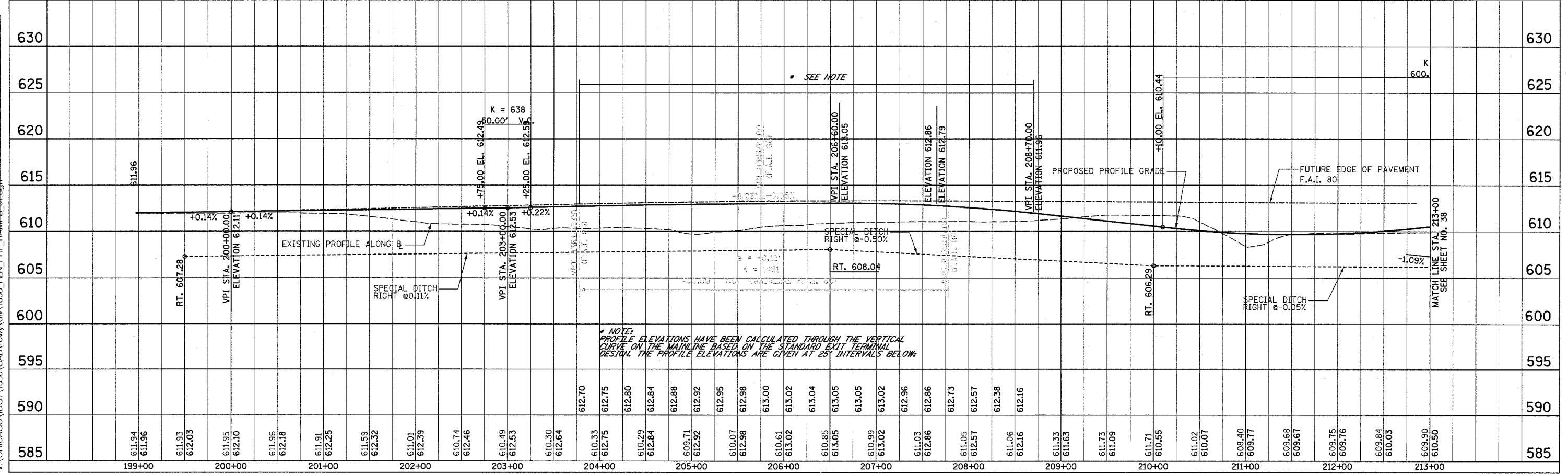


F.A.I. RTE.	SECTION	COUNTY	TOTAL SHEETS	SHEET NO.
80	32-2HR	GRUNDY	171	47
STA.		TO STA.		
FED. ROAD DIST. NO.		ILLINOIS	FED. AID PROJECT	
CONTRACT NO.		66412		



PLAN	SURVEYED	BY	DATE
	ALIGNED		
	CHECKED		
	NO. _____		
	DATE _____		

PROFILE	SURVEYED	BY	DATE
	GRADES		
	CHECKED		
	NO. _____		
	DATE _____		



NOTE: PROFILE ELEVATIONS HAVE BEEN CALCULATED THROUGH THE VERTICAL CURVE ON THE MAINLINE BASED ON THE STANDARD EXIT TERMINAL DESIGN. THE PROFILE ELEVATIONS ARE GIVEN AT 25' INTERVALS BELOW.

PROPOSED RAMP C