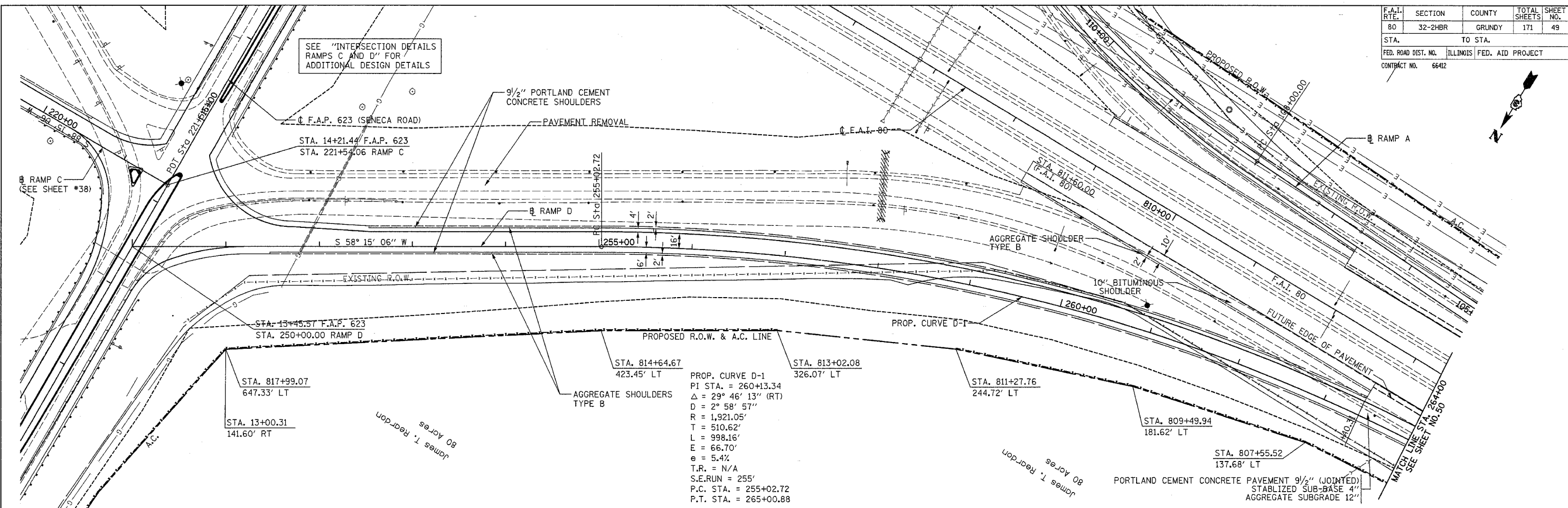


F.A.I. RTE.	SECTION	COUNTY	TOTAL SHEETS	SHEET NO.
80	32-2HBR	GRUNDY	171	49
STA.		TO STA.		
FED. ROAD DIST. NO.		ILLINOIS	FED. AID PROJECT	
CONTRACT NO.		66402		

SEE "INTERSECTION DETAILS RAMP C AND D" FOR ADDITIONAL DESIGN DETAILS

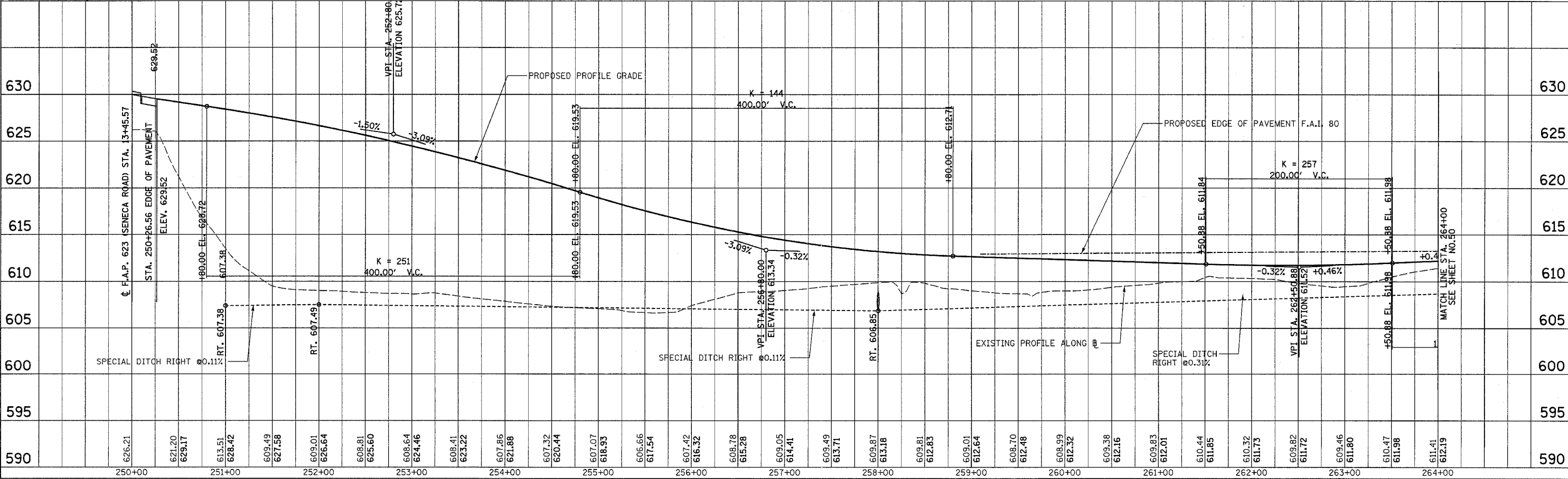


PROP. CURVE D-1  
 PI STA. = 260+13.34  
 $\Delta = 29^\circ 46' 13''$  (RT)  
 $D = 2^\circ 58' 57''$   
 $R = 1,921.05'$   
 $T = 510.62'$   
 $L = 998.16'$   
 $E = 66.70'$   
 $e = 5.4\%$   
 $T.R. = N/A$   
 $S.E.RUN = 255'$   
 $P.C. STA. = 255+02.72$   
 $P.T. STA. = 265+00.88$

PLAN	NO.	DATE
SURVEYED BY		
CHECKED BY		
DATE		

PROFILE	NO.	DATE
SURVEYED BY		
CHECKED BY		
DATE		

11/4/2005  
 V:\CHICAGO\DOT\1836\CAD\rdwy\div\1836\_PLN\_PRF\_RAMPD\_01.dgn



PROPOSED RAMP D