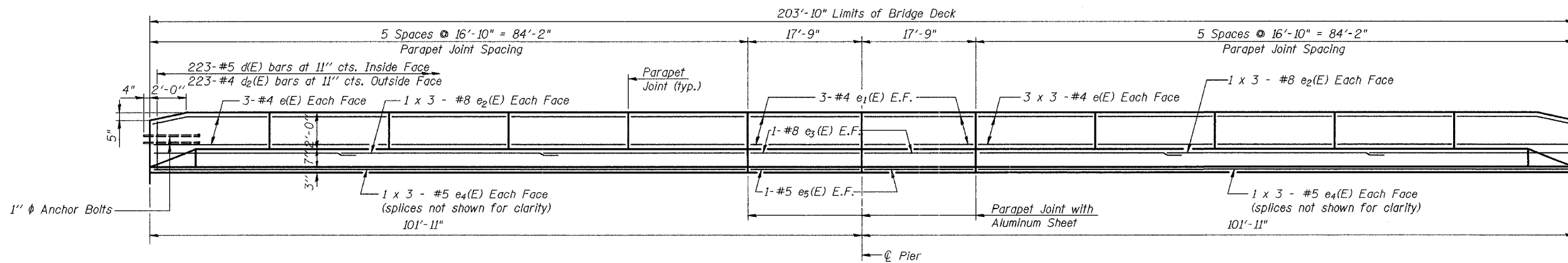


F.A.P.	SECTION	COUNTY	TOTAL SHEETS	SHEET NO.
623	32-2 HBR	GRUNDY	171	101
STA.	TO STA.			
FED. ROAD DIST. NO.	ILLINOIS	FED. AID PROJECT		
CONTRACT NO. 66412 SHEET 58 OF 520				

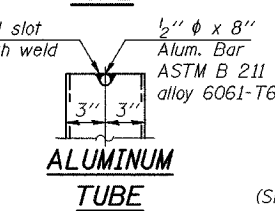
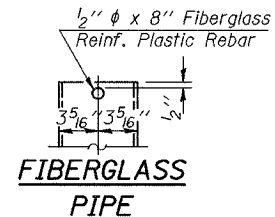


**SUPERSTRUCTURE  
BILL OF MATERIAL**

Bar	No.	Size	Length	Shape
a(E)	1,224	#5	22'-10"	—
a1(E)	576	#5	33'-7"	—
a2(E)	408	#6	4'-6"	—
b(E)	544	#5	27'-3"	—
b1(E)	65	#6	36'-0"	—
b2(E)	434	#5	26'-0"	—
b3(E)	65	#6	29'-7"	—
b4(E)	124	#5	21'-5"	—
b5(E)	56	#5	27'-3"	—
c1(E)	204	#5	5'-8"	—
c2(E)	408	#5	2'-7"	—
d(E)	446	#5	3'-0"	—
d1(E)	446	#5	2'-5"	—
d2(E)	446	#4	3'-0"	—
d3(E)	446	#4	3'-7"	—
e(E)	120	#4	16'-6"	—
e1(E)	24	#4	17'-5"	—
e2(E)	24	#8	31'-7"	—
e3(E)	8	#8	17'-5"	—
e4(E)	24	#5	29'-9"	—
e5(E)	8	#5	17'-5"	—
m(E)	60	#5	23'-4"	—
m1(E)	16	#5	7'-0"	—
m2(E)	8	#5	2'-5"	—
s(E)	140	#4	8'-8"	—
s1(E)	124	#4	10'-4"	—
u(E)	140	#4	3'-3"	—
v(E)	130	#5	3'-6"	—
Reinforcement Bars, Epoxy Coated	Pound	105,830		
Concrete Superstructure	Cu. Yds.	454.0		
Protective Coat	Sq. Yds.	1,598		

**INSIDE ELEVATION OF PARAPET**

East Parapet Shown  
West Parapet Similar



**TOP PLAN**  
(Showing Aluminum Tube)

**Notes:**

The exterior surfaces of the floor drains shall be painted with the finish coat as specified in the special provisions for Cleaning and Painting New Metal Structures. The exterior surfaces of the drains shall be cleaned according to Steel Structures Painting Council's Spec. SSPC-SP1 prior to painting. Fiberglass pipe shall conform to ASTM D 2996, with short-time rupture strength hoop tensile stress of 30,000 p.s.i. minimum.

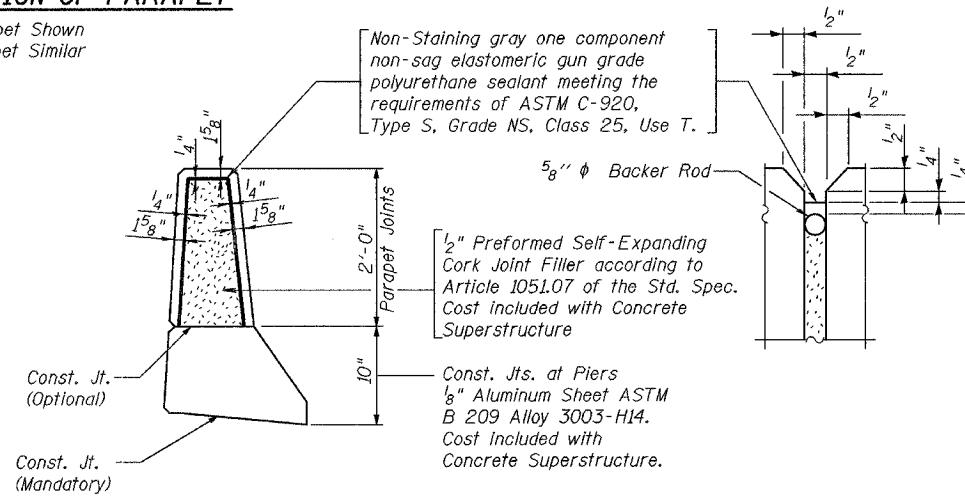
Web and 3/4" φ Steel Stud Bolts Threaded 6" Each End with 2 Washers and Locknut. 5/16" φ Holes in Web (May Be Drilled In Field)

Non-Staining gray one component non-sag elastomeric gun grade polyurethane sealant meeting the requirements of ASTM C-920, Type S, Grade NS, Class 25, Use T.

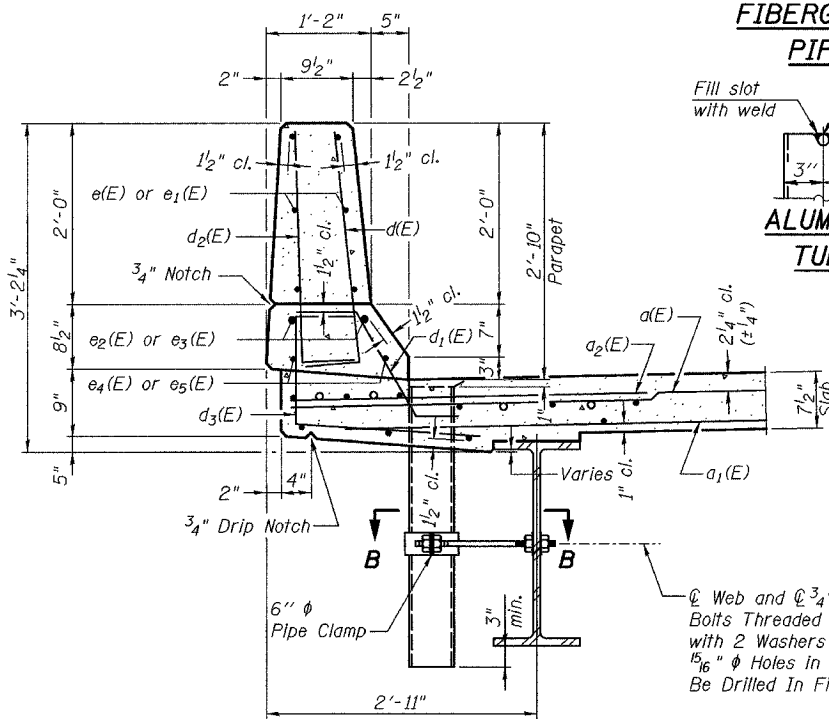
2" Preformed Self-Expanding Cork Joint Filler according to Article 1051.07 of the Std. Spec. Cost included with Concrete Superstructure

Const. Jts. at Piers  
8" Aluminum Sheet ASTM B 209 Alloy 3003-H14. Cost included with Concrete Superstructure.

**PARAPET JOINT DETAILS**

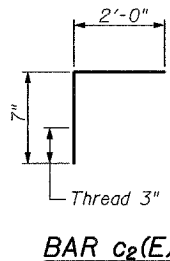
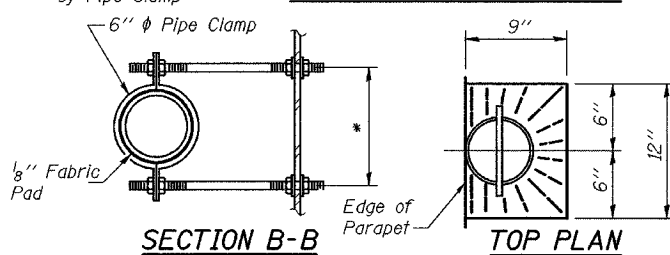


**SECTION THRU PARAPET**

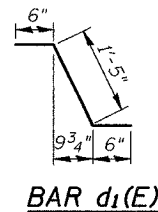


\* Dimension as required by Pipe Clamp

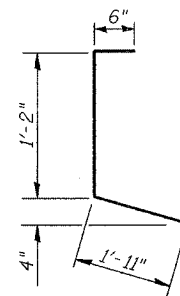
**SECTION THRU PARAPET**



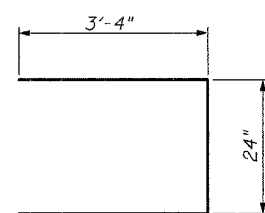
**BARS d(E) & d2(E)**



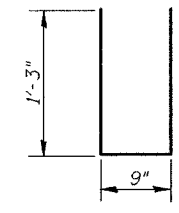
**BAR d3(E)**



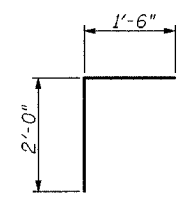
**BAR s(E)**



**BAR u(E)**



**BAR v(E)**



**MIN. BAR LAP**

#4 bar = 1'-8"  
#5 bar = 2'-2"  
#6 bar = 2'-9"  
#8 bar = 4'-6"

Reinforcement bars designated (E) shall be epoxy coated.  
Bars indicated thus 1 x 4 - #5 etc. indicates 1 line of bars with 4 lengths per line.  
Reinforcement bars shall not pass thru aluminum sheets.

REVISIONS	NAME	DATE

ILLINOIS DEPARTMENT OF TRANSPORTATION  
**SENECA ROAD**  
OVER F.A.I. 80  
F.A.P. 623 SEC. 32-2 HBR GRUNDY CO.  
STRUCTURE No. 032-0114  
STATION 19+49.99  
**SUPERSTRUCTURE DETAILS II**

SCALE: NONE  
DATE: OCTOBER, 2005  
DRAWN BY: NJH  
CHECKED BY: JLG

**Louis Berger & Associates, Inc.**  
1001 Elm Street, Suite 300  
Manchester, NH 03101