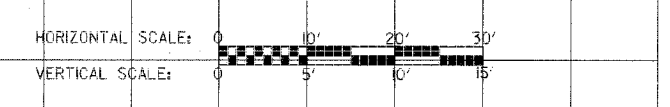
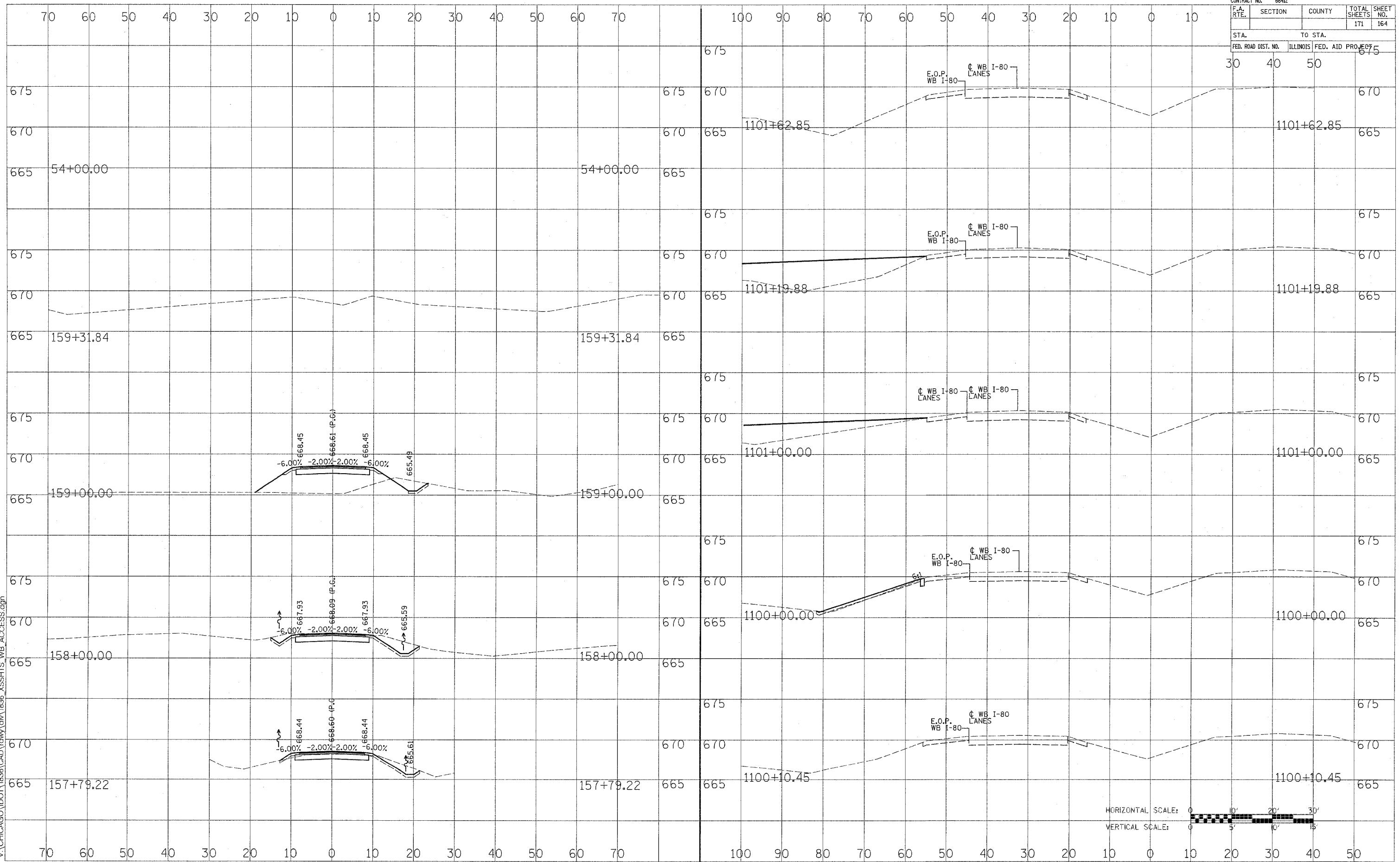


CONTRACT NO. 66412		TOTAL SHEETS 171		SHEET NO. 164	
F.A. RTE.	SECTION	COUNTY	ILLINOIS FED. AID PROJECT		
STA. 30		TO STA. 50			
FED. ROAD DIST. NO.		ILLINOIS FED. AID PROJECT			

DATE	
BY	
FINAL SURVEY	
NOTE BOOK	
NO.	
AREAS CHECKED	

DATE	
BY	
ORIGINAL SURVEY	
NOTE BOOK	
NO.	
AREAS CHECKED	

11/4/2005
 V:\CHICAGO\DOT\1836\CAD\rdwy\1836_XSSHTS_WB_ACCESS.dgn



PROPOSED WB ACCESS ROAD

F.A.I. 80