

EXCERPT FROM COMED DOCUMENT  
 "CONDITIONS FOR WORKING IN THE VICINITY  
 OF COMED'S ELECTRIC TRANSMISSION LINES"

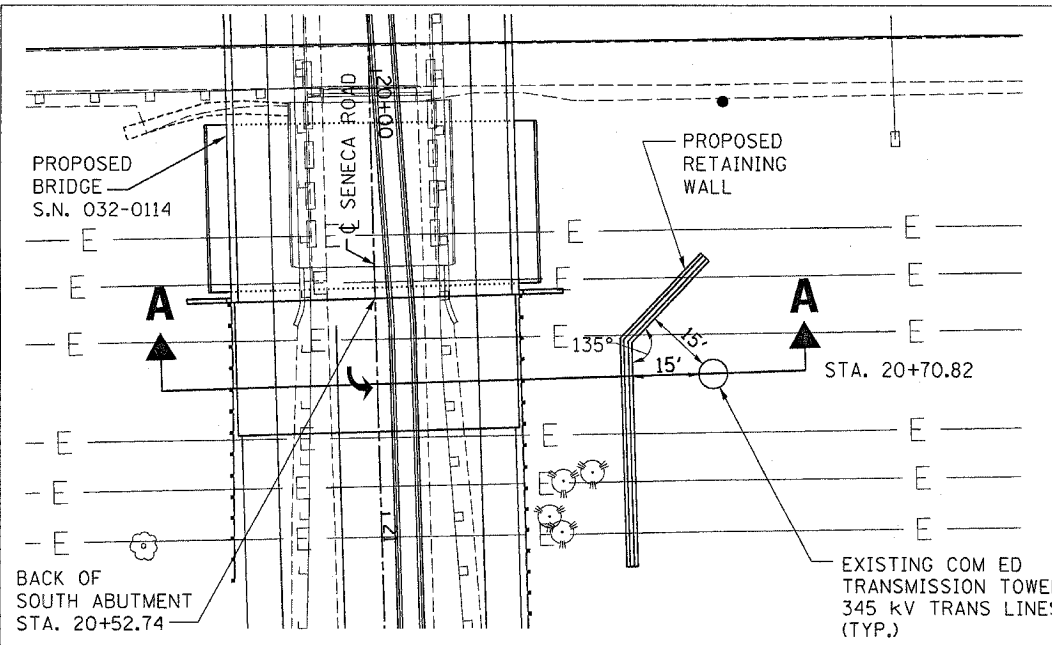
AUGUST 1, 2002

2.3 IN THE VICINITY OF COMED ELECTRIC TRANSMISSION LINES  
 MEANS CONSTRUCTION OR OTHER WORK ACTIVITIES ON  
 OR ADJACENT TO RIGHTS-OR-WAY OR EASEMENTS THAT  
 CONTAIN COMED ELECTRIC TRANSMISSION LINES, INCLUDING  
 BUT NOT LIMITED TO ANY USE OF CRANES, BOOMS, HOISTS,  
 LADDERS OR OTHER EQUIPMENT OR ITEMS THAT MIGHT  
 COME WITHIN THE CLEARANCE DISTANCES SET FORTH IN  
 TABLE I, BELOW.

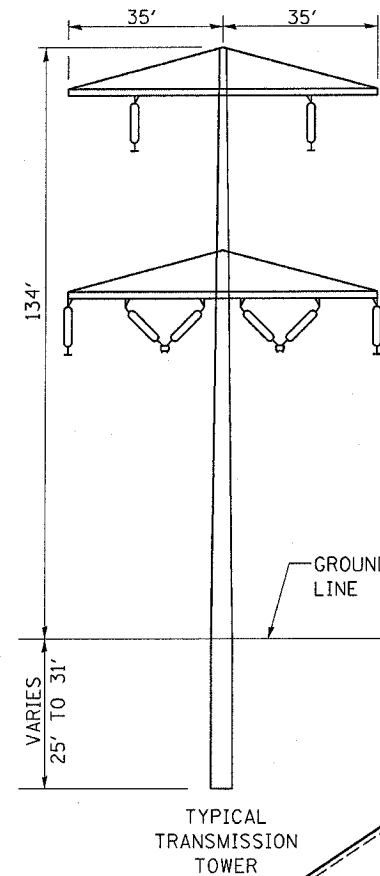
TABLE I

CLEARANCE DISTANCE TO COMED'S TRANSMISSION LINES

NOMINAL TRANSMISSION LINE OPERATING VOLTAGE (PHASE-TO PHASE, VOLTS)	TYPICAL NUMBER OF BALL & SOCKET INSULATORS IN A SUSPENSION STRING	TYPICAL INSULATOR LTH. (FEET)	CLEARANCE DISTANCE (FEET) (METERS)
345,000	18 TO 20	8 TO 12	30 9.2

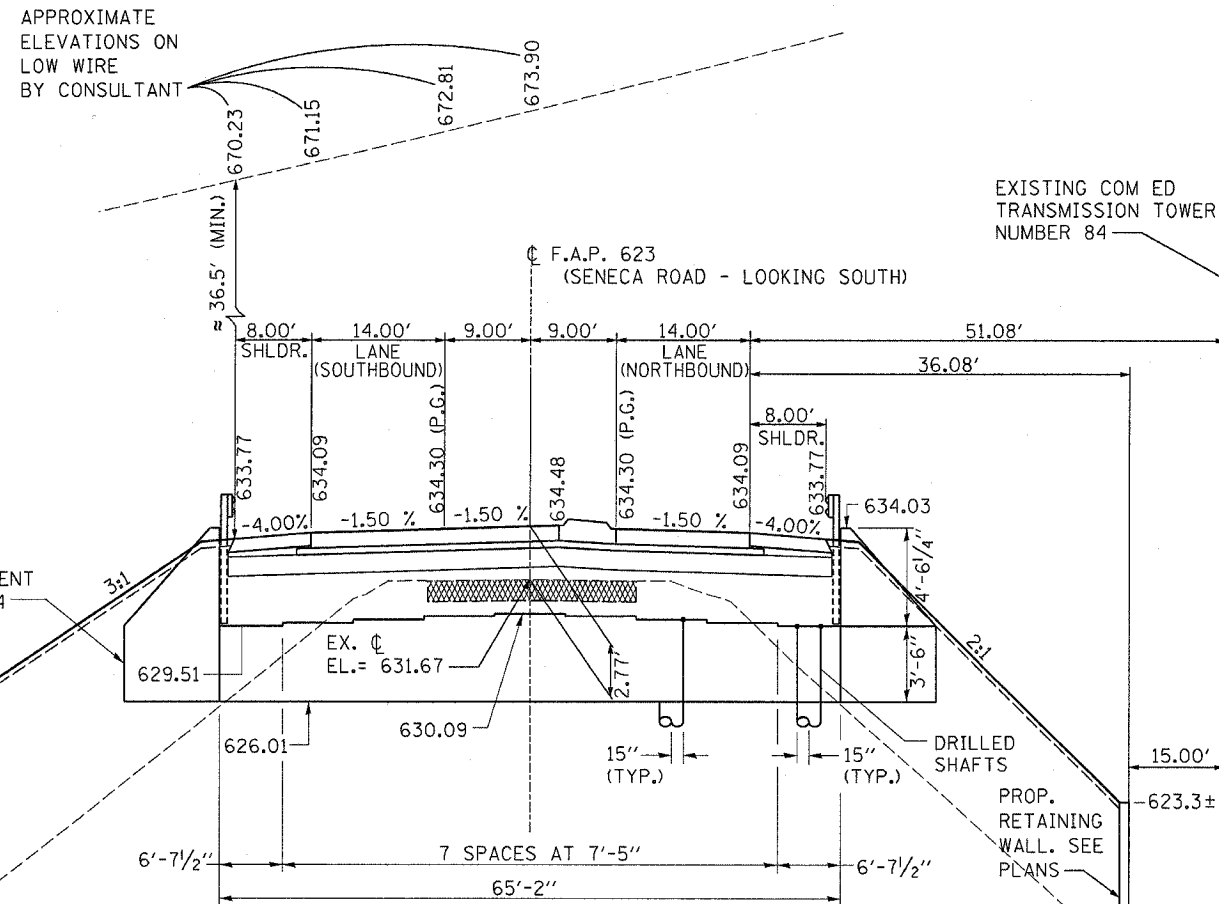


SENECA ROAD INTERCHANGE AT F.A.I. 80  
 SENECA ROAD NEAR COM ED TRANSMISSION TOWER



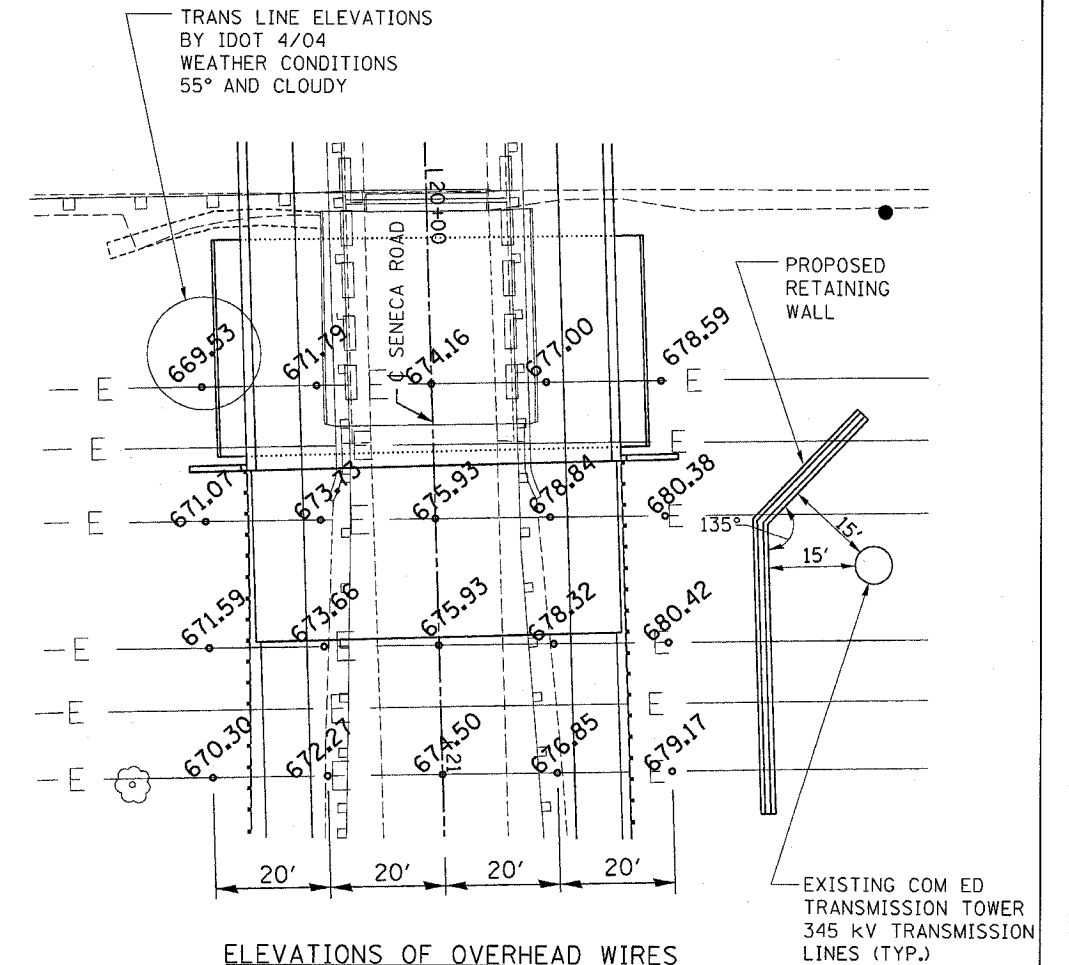
TYPICAL  
TRANSMISSION  
TOWER

APPROXIMATE  
ELEVATIONS ON  
LOW WIRE  
BY CONSULTANT



SECTION A-A

SENECA ROAD INTERCHANGE AT F.A.I. 80  
 SENECA ROAD STA. 20+70.82  
 LOOKING NORTH



ELEVATIONS OF OVERHEAD WIRES  
 AND CENTERLINE AT SOUTH ABUTMENT  
 S.N. 032-0114

TOWER NUMBER	FOUNDATION DIAMETER
83	6'-6"
84	MIN. 7'-8"
85	6'-0"

THE INFORMATION SHOWN ON THESE SHEETS REPRESENTS  
 THE BEST INFORMATION THE DEPARTMENT WAS ABLE  
 TO OBTAIN. THE CONTRACTOR IS ADVISED TO VERIFY  
 ANY INFORMATION ON THIS SHEET.

SEE BRIDGE PLANS FOR MORE INFORMATION.

NOTE: SEE SPECIAL PROVISIONS FOR COORDINATION  
 REQUIRED WITH COM ED FOR WORK NEAR  
 THEIR FACILITIES.

REVISIONS	
NAME	DATE
	12.6.02

ILLINOIS DEPARTMENT OF TRANSPORTATION  
**345 kV COM ED  
 TRANSMISSION LINES**  
**FOR INFORMATION ONLY**

SCALE: VERT. \_\_\_\_\_  
 HORIZ. \_\_\_\_\_

DATE \_\_\_\_\_ DRAWN BY \_\_\_\_\_  
 CHECKED BY \_\_\_\_\_